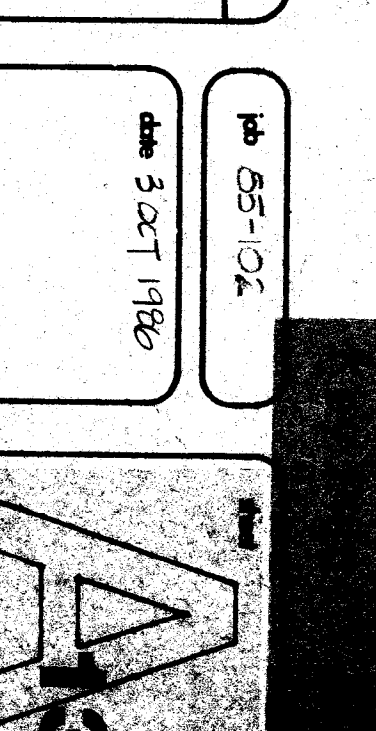
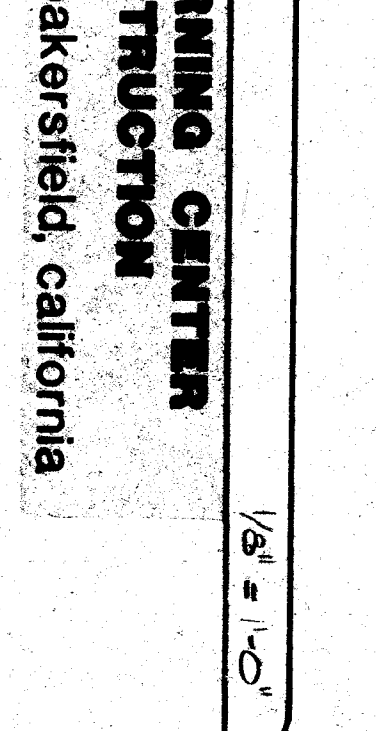
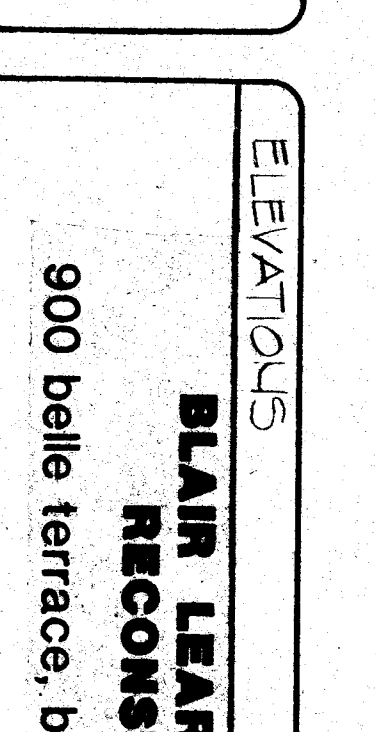
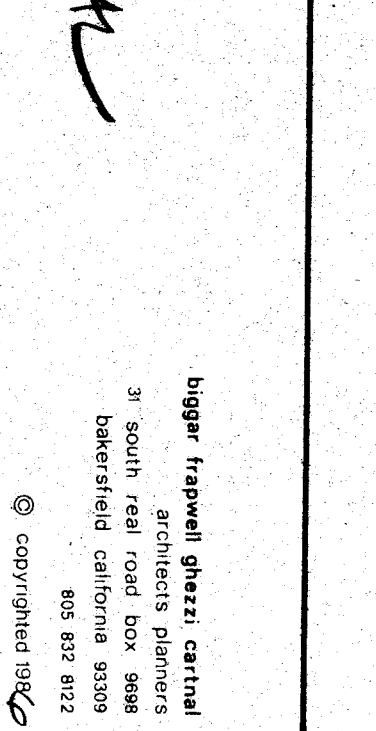
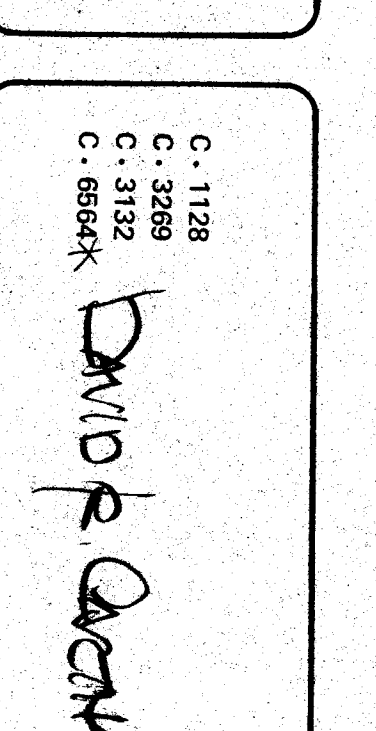
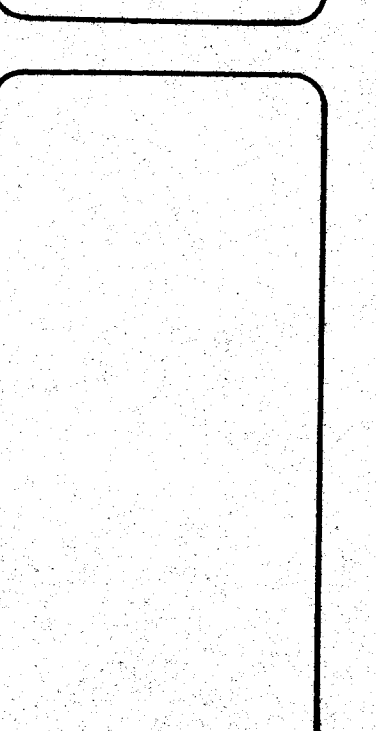
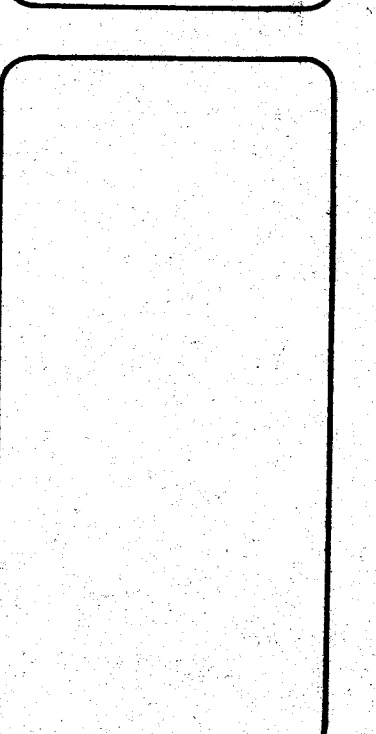
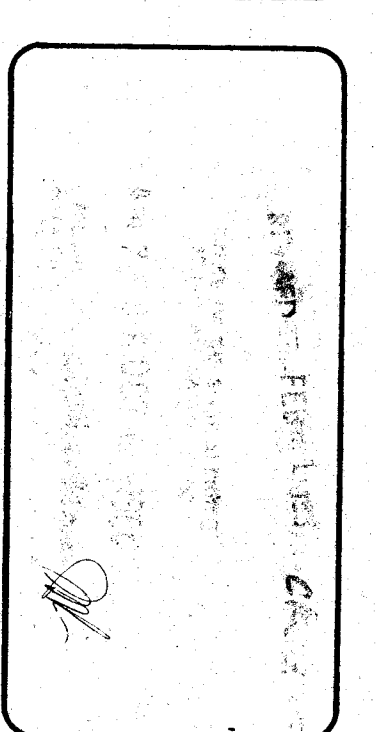
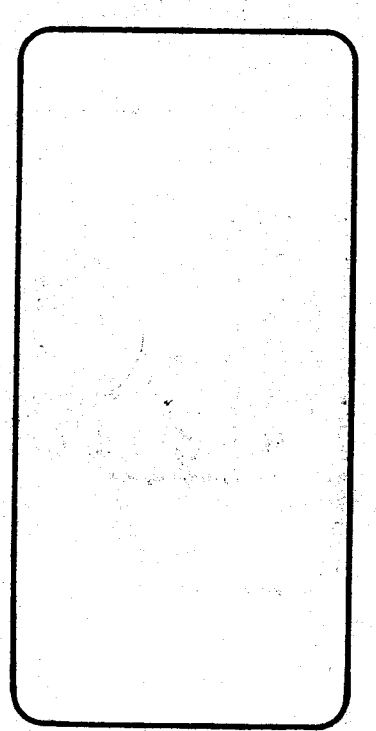
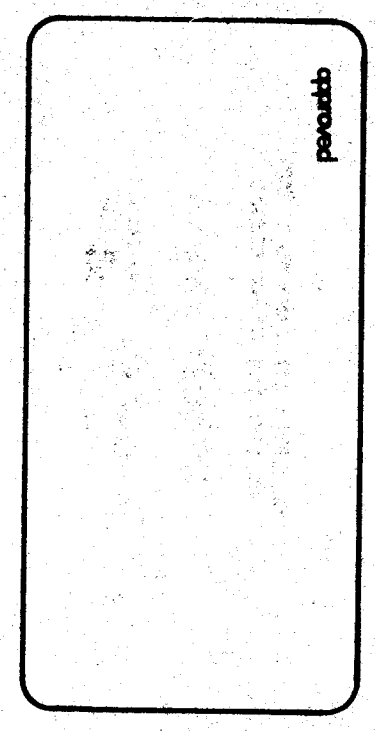


NOTE:
 FOR LOCATIONS OF OTHER GEMENT BOARD PANELS REFER TO SECTION H AND I OF THE CONSTRUCTION DOCUMENTS.
 FOR LOCATIONS OF BLINDS REFER TO SECTION J OF THE CONSTRUCTION DOCUMENTS.

1/8" = 1'-0"



ELEVATIONS
**BLAIR LEARNING CENTER
 RECONSTRUCTION**
 900 belle terrace, bakerfield, california

1/8" = 1'-0"

10-55-102

DATE 3 OCT 1980

1128