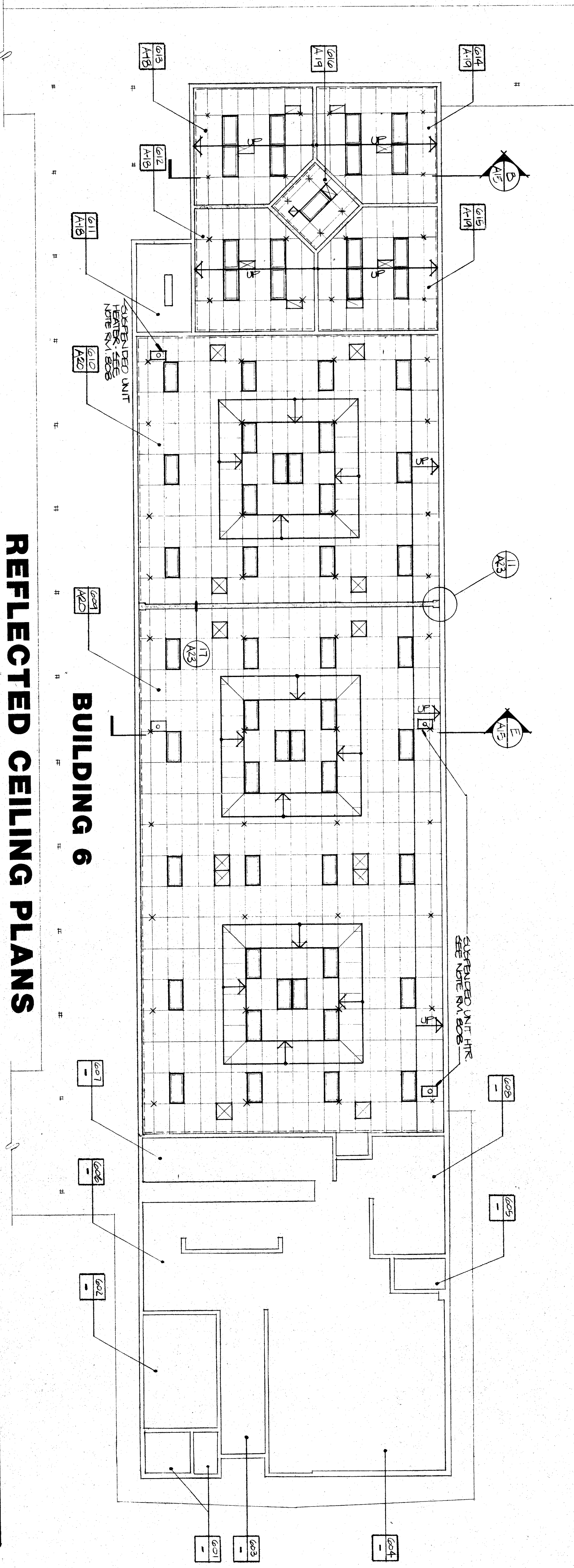
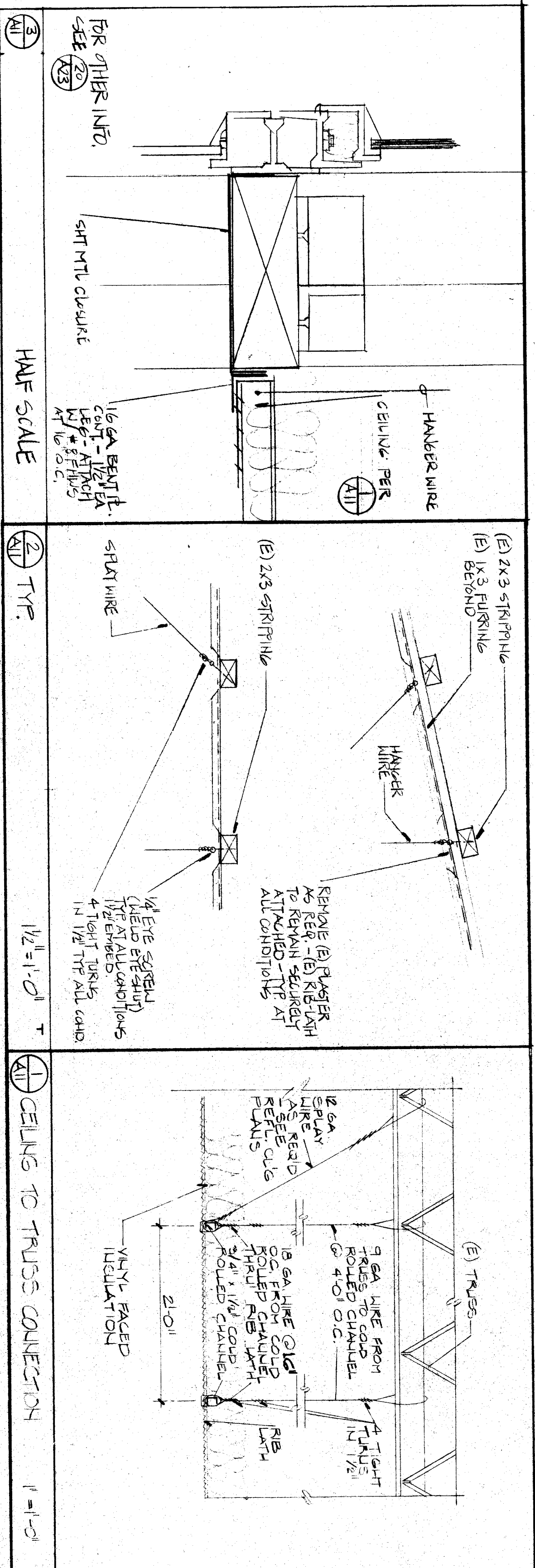


NOTE:
 REMOVE ALL (E) LIGHT FIXTURES.
 (N) LIGHT FIXTURES AS FOR ALL BUILDINGS
 (M) ELECTRICAL DOWNLINES AS FOR ALL BUILDINGS
 (L) ELECTRICAL DOWNLINES AS FOR ALL BUILDINGS
 (O) REMOVE ALL (E) ALL DAMAGED KEYS
 (P) REMOVE ALL (E) ALL DAMAGED KEYS
 (Q) REMOVE ALL (E) ALL DAMAGED KEYS
 (R) REMOVE ALL (E) ALL DAMAGED KEYS
 (S) REMOVE ALL (E) ALL DAMAGED KEYS
 (T) REMOVE ALL (E) ALL DAMAGED KEYS
 (U) REMOVE ALL (E) ALL DAMAGED KEYS
 (V) REMOVE ALL (E) ALL DAMAGED KEYS
 (W) REMOVE ALL (E) ALL DAMAGED KEYS
 (X) REMOVE ALL (E) ALL DAMAGED KEYS
 (Y) REMOVE ALL (E) ALL DAMAGED KEYS
 (Z) REMOVE ALL (E) ALL DAMAGED KEYS

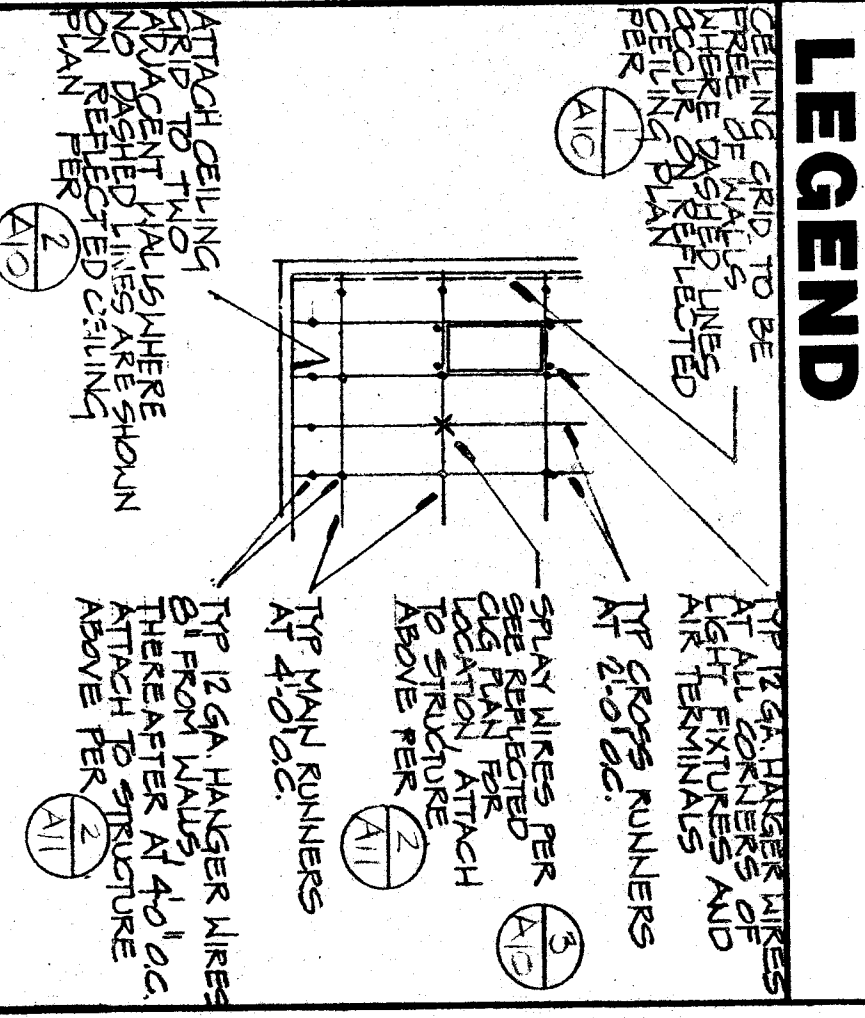


REFLECTED CEILING PLANS



FOR OTHER INTS. SEE 202
 1/2" = 1'-0"
 1" = 1'-0"

C. 1128
 C. 3132
 C. 8544
DAVID P. GHEZZI
 Higher Regional Plans - General
 PROJECTS: PLANNING
 3 SOUTH HALL ROAD, SUITE 200
 SAN ANTONIO, TEXAS 78222
 © 2007/2008/2010



- LEGEND**
- ☐ TILE & T-BAR CEILING
 - ☐ 1/2" CRT DB (N)
 - ☐ PC PLASTER (N)
 - ☐ RECESS & VENT FACED INHIBITION (N)
 - ☐ RECESSED FIXTURE (N)
 - ☐ SURFACE MOUNTED FIXTURE (N)
 - ☐ PENDANT MOUNTED FIXTURE (N)
 - ☐ RETURN AIR GRILLE (N)
 - ☐ SUPPLY AIR GRILLE (N)
 - ☐ EXHAUST AIR GRILLE (N)
- SEE ROOF PLAN FOR SOFFIT LIGHTING.
 UNLESS OTHERWISE NOTED, SKIN AT CEILING IS ARE EXISTING TO REMAIN.
 FOR ADDITIONAL INFORMATION SEE ELECTRICAL & MECHANICAL DRAWINGS.

REFLECTED CEILING PLANS - BUILDINGS 6&8
BLAIR LEARNING CENTER
RECONSTRUCTION
 900 Belle Terrace, Bakerfield, California

