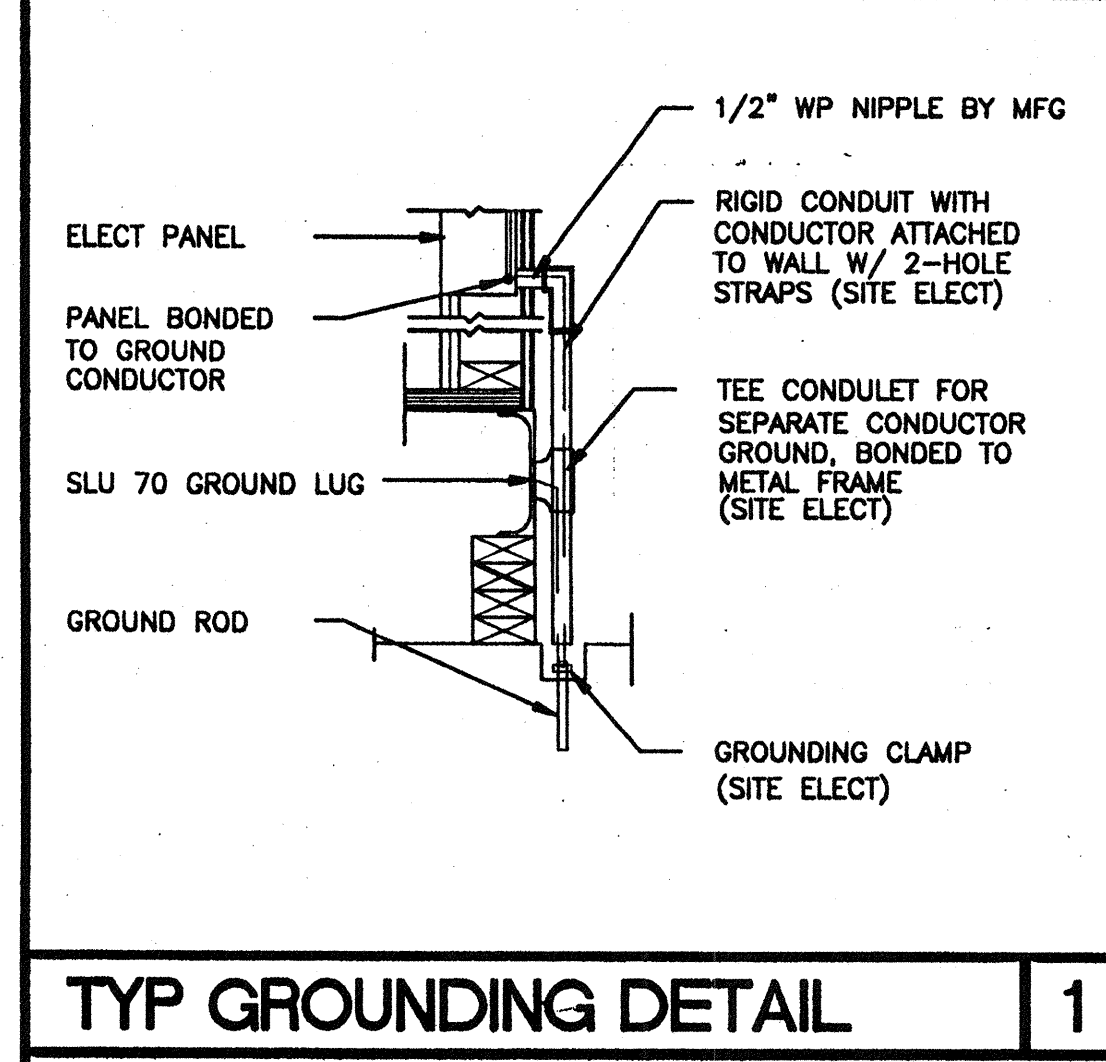


ELECTRICAL PANEL SCHEDULE											
MAIN: 100 AMP 12 POLE			PANEL: A			FEED: REAR					
			LOCATION: REAR/INTERIOR			MOUNTING: FLUSH					
LOAD		WATTS		BREAKER		P	Amps	WATTS	P	Amps	WATTS
		A#	B#	A#	B#						
RECEPTACLE	(4)	720		20	1	1		2	2	50	3360
RECEPTACLE/CLOCK	(5)		720	20	1	3		4	-	-	3360
						5		6	2	30	2500
						7		8	-	-	2500
INT/EXT LIGHTS	(13)	900		20	1	9		10	-	-	
INT. LIGHTS	(12)		840	20	1	11		12	-	-	40
WATTS/PHASE	A = 7480	1820	1560					5860	5900	B = 7480	WATTS/PHASE
TOTAL	15385	WATTS	65	AMPS	120/240	VOLTS		SINGLE	Ø	THREE	WIRE
NCL	=	13160	WATTS								

- ### GENERAL GROUNDING NOTES
- EACH BUILDING SHALL BE SEPARATELY GROUNDED WITH A 3/4" RD. X 8' COPPERCLAD STEEL GROUND ROD. WHERE ROCK BOTTOM IS ENCOUNTERED, ROD SHALL BE DRIVEN AT AN ANGLE NOT TO EXCEED 45 DEGREE'S FROM THE VERTICAL OR SHALL BE BURIED IN A TRENCH THAT IS AT LEAST 30" DEEP (BY SITE ELECTRICAL)
 - TESTING: TEST FOR RESISTANCE TO GROUND. IF RESISTANCE EXCEEDS 25 OHMS, INSTALL ADDITIONAL GROUND RODS SEPARATED AT LEAST 6'-0" UNTIL RESISTANCE IS REDUCED TO 25 OHMS OR LESS. (BY SITE ELECTRICAL)
 - APPROVAL OF THIS PLAN DOES NOT CONSTITUTE APPROVAL OF THIS FIRE ALARM FOR ALL SITES. THE FIRE ALARM SYSTEM AND/OR COMPONENTS MAYBE REQUIRED TO BE CHANGED DUE TO SITE LOCATION, EXISTING CONDITIONS OR INCOMPATIBLE COMPONENTS.
 - GROUND MG TEST SHALL BE DONE IN THE PRESENCE OF THE PROJECT INSPECTOR. ALL GROUNDING SHALL BE IN ACCORDANCE WITH CEC ARTICLE 250.

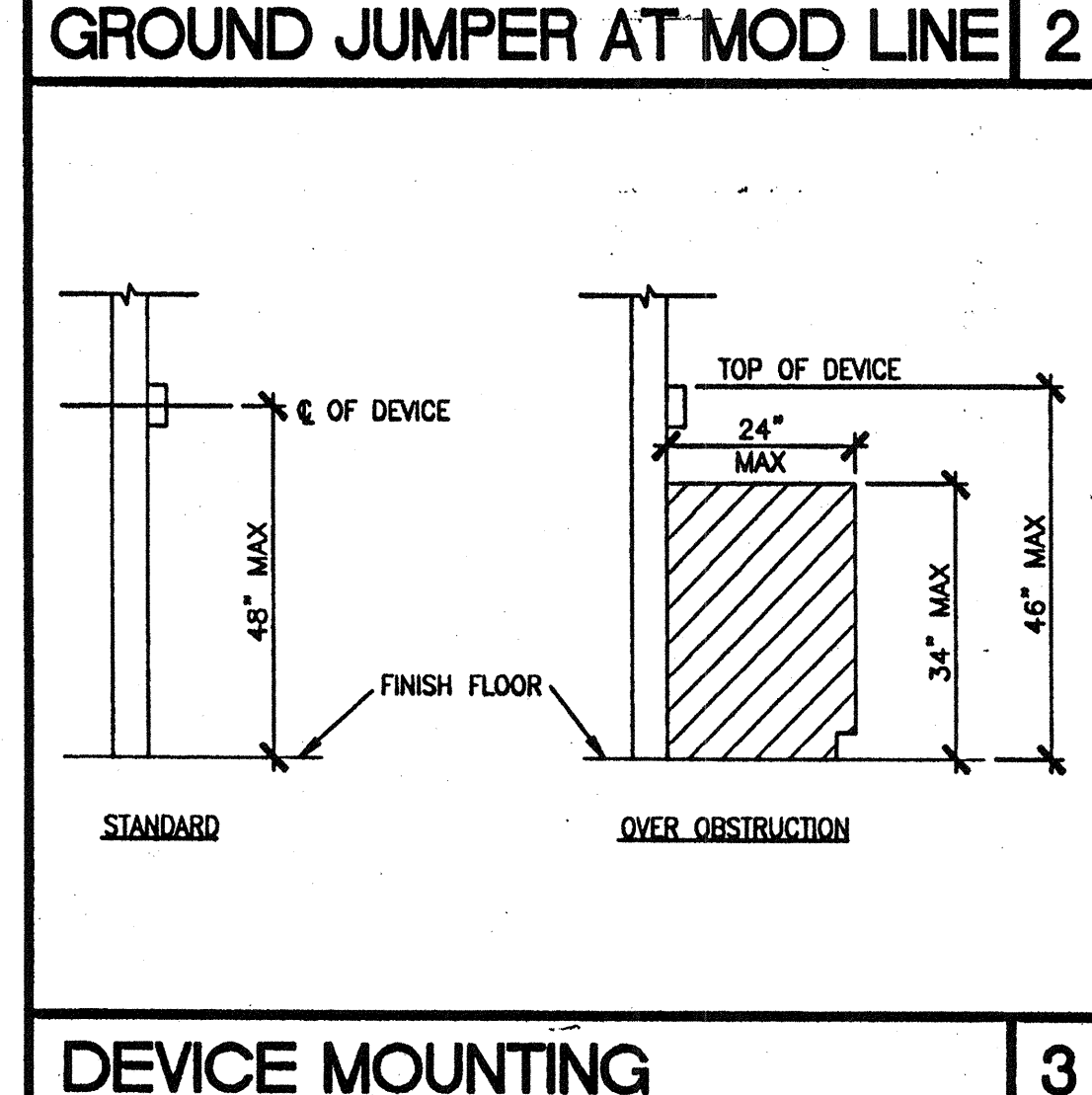
- ### ELECTRICAL LEGEND
- 2'x4' 4 TUBE FLUORESCENT LIGHT FIXTURE
 - EXTERIOR LIGHT FIXTURE AT +93" AFF
 - SWITCH AT +48" AFF
 - 3WAY SWITCH AT +48" AFF UON
 - DUPLEX WALL RECEPTACLE 15A 125V 3-WIRE AT +18" AFF UON
 - HVAC UNIT (HV)
 - 4SD J-BOX FOR FIRE ALARM PULL STATION AT +48" AFF, TO 3/4" CO TO OR PULLSTRING
 - 4SD J-BOX FOR FIRE ALARM STROBE AT +80" AFF 3/4" CO TO PULLSTRING
 - 4SD J-BOX FOR FIRE ALARM HORN AT +96" AFF 3/4" CO TO PULLSTRING
 - WEATHER PROOF GUTTER BOX (6"x8"x4") AT +18" AFF RECEIVE 3/4" CO FROM FA DEVICE, PULLSTRING
 - ELECTRICAL PANEL AT +60" AFF TO CENTERLINE 1 1/4" POWER NIPPLE POC, GND JUMPER BY SITE ELECT
 - CLOCK AT +90" AFF
 - 4SD J BOX FOR HEAT DETECTOR (ATTIC) *
 - 4SD J BOX FOR SMOKE DETECTOR (ATTIC) *



- ### NOTES
- SCHOOL EQUIPMENT ANCHORAGE
THE FOLLOWING IS FOR THE ARCHITECTS INFORMATION ONLY:
THE SEISMIC ANCHORAGE OF ELECTRICAL EQUIPMENT SHALL CONFORM TO COR TITLE 24, SECTION 1832A AND TABLE 18A-D. ANCHORAGE DETAILS FOR ROOF/FLOOR MOUNTED EQUIPMENT WEIGHING LESS THAN 400 LBS & HUNG EQUIPMENT WEIGHING LESS THAN 20 LBS MAY BE OMITTED FROM THE PLANS.
ALL ELECTRICAL EQUIPMENT SHALL BE BRACED OR ANCHORED TO RESIST A HORIZONTAL FORCE ACTING IN ANY DIRECTION USING THE FOLLOWING CRITERIA:

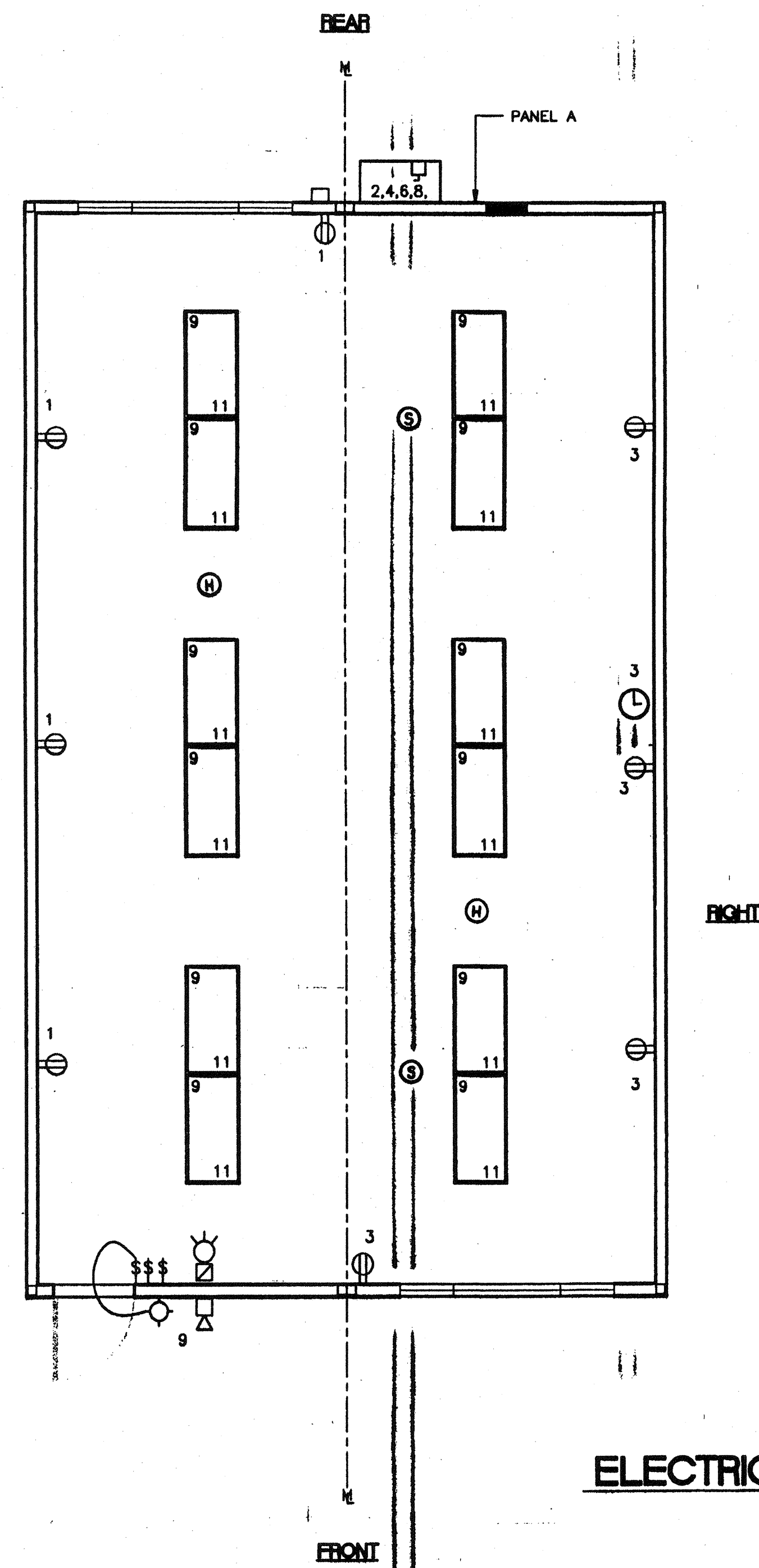
EQUIPMENT ON GRADE	20% OF OPERATING WEIGHT
EQUIPMENT ON STRUCTURE	30% OF OPERATING WEIGHT

FOR FLEXIBLY MOUNTED EQUIPMENT USE 4 TIMES THE ABOVE VALUES, AND FOR SIMULTANEOUS VERTICAL FORCE USE 1/3 TIMES THE HORIZONTAL FORCE.
THE ABOVE VALUES ARE FOR AN IMPORTANCE FACTOR, I = 1.0 AND SEISMIC ZONE, Z = 4
WHERE ANCHORAGE DETAILS ARE NOT SHOWN ON THE DRAWINGS THE FIELD INSTALLATION SHALL BE SUBJECT TO THE APPROVAL OF THE ARCHITECT AND THE FIELD ENGINEER OF THE OFFICE OF THE STATE ARCHITECT.
* 2. SMOKE AND HEAT DETECTORS SHOWN ARE FOR OPTIONAL AUTOMATIC DETECTION. IF ELECTED AS AN OPTION MODTECH WILL PROVIDE 4SD BOXES AND 3/4" CO MOUNTED ON UNDERSIDE OF ROOF PURLINS. DEVICES PROVIDED AND INSTALLED BY OTHERS



IDENTIFICATION STAMP
DIV. OF THE STATE ARCHITECT
OFFICE OF REGULATION SERVICES
04 102015
APPROVED FOR THE ARCHITECT
DATE 05-12-15

IDENTIFICATION STAMP
DIV. OF THE STATE ARCHITECT
APPROVED FOR THE ARCHITECT
DATE 05-12-15



ELECTRICAL PLAN (24'x40')
SCALE: 1/4" = 1'-0"

PC
CBC 1998

REVISIONS			
1			
2			
3			
4			

Electrical Engineer's Seal

Mechanical Engineer's Seal

Structural Engineer's Seal

Architect's Seal
GEORGE C. ROY
ARCHITECT
STATE OF CALIFORNIA
LICENSE EXPIRES 6-30-2007

IDENTIFICATION STAMP
DIV. OF THE STATE ARCHITECT
OFFICE OF REGULATION SERVICES
PC-04
101268
DATE 05-17-1998

MODTECH INC.
2830 BARRETT AVENUE
PERRIS, CALIF. 92572
PH (909) 943-4014
FAX (909) 940-0427

PROJECT NUMBER: 3318, 3416, 3449, 3473, 3482

ELECTRICAL PLAN 24'x40'

MODTECH, INC. 1999
STOCKPILE #51
CLASS LEASING INC
4012-104 80 MPH
24x40 CLASSROOMS

DRAWN BY: C.L.L.S. 051
DATE:
CHECKED BY:
DATE:
MODTECH Index No.
E1.01