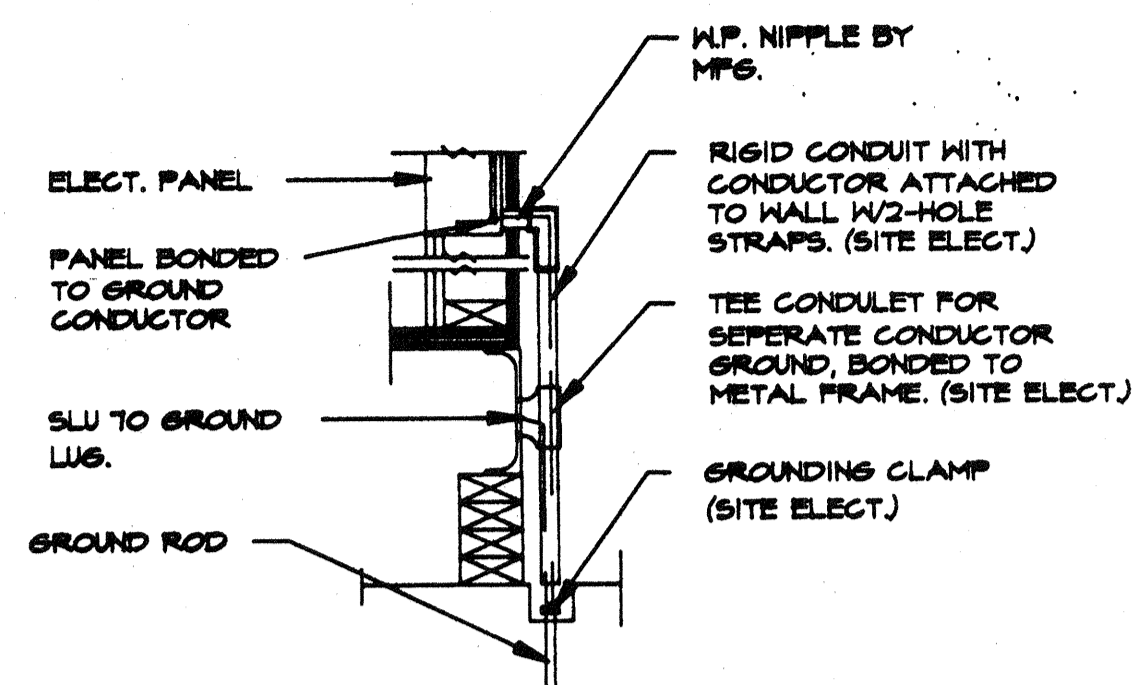
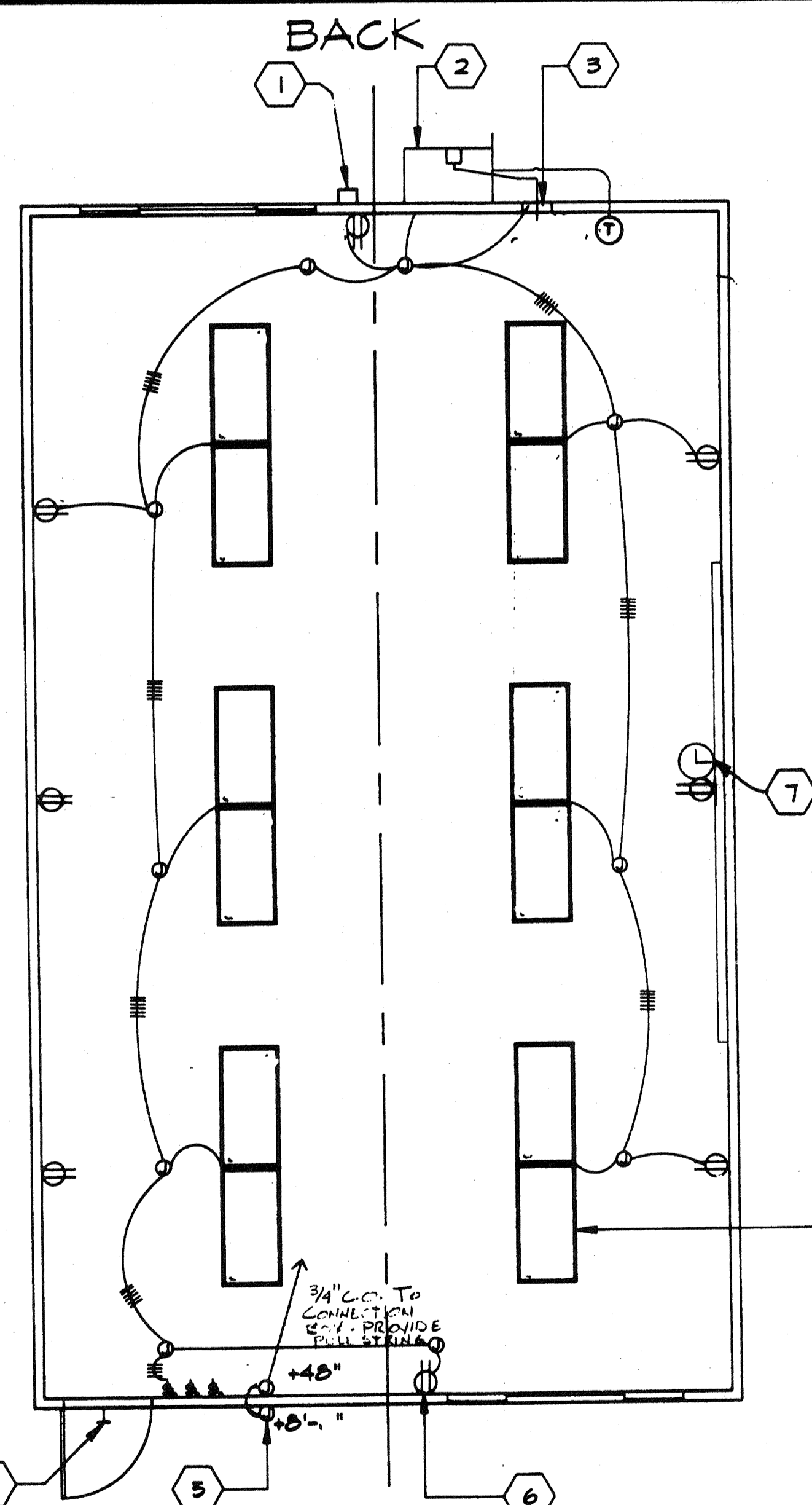


JUMPER @ MOD. LINE



TYPICAL GROUNDING DETAIL

1. EACH BUILDING SHALL BE SEPARATELY GROUNDED WITH A 5/4" RD X 8' COPPERCLAD STEEL GROUND ROD, WHERE ROCK BOTTOM IS ENCOUNTERED, ROD SHALL BE DRIVEN AT AN ANGLE NOT TO EXCEED 45 DEGREES FROM THE VERTICAL OR SHALL BE BURIED IN A TRENCH THAT IS AT LEAST 30" DEEP. (BY SITE ELECTRICAL)
2. TESTING: TEST FOR RESISTANCE TO GROUND. IF RESISTANCE EXCEEDS 25 OHMS, INSTALL ADDITIONAL GROUND RODS SEPARATED AT LEAST 6'-0" UNTIL RESISTANCE IS REDUCED TO 25 OHMS OR LESS. (BY SITE ELECTRICAL)
3. PROVIDE EQUIPMENT ANCHORAGE PER TITLE 24, TABLE 2-25J, PART B.
4. APPROVAL OF THIS PLAN DOES NOT CONSTITUTE APPROVAL OF THIS FIRE ALARM FOR ALL SITES. THE FIRE ALARM SYSTEM AND/OR COMPONENTS MAY BE REQUIRED TO BE CHANGED DUE TO SITE LOCATION, EXISTING CONDITIONS OR INCOMPATIBLE COMPONENTS.
5. GROUND MG TEST SHALL BE DONE IN THE PRESENCE OF THE PROJECT INSPECTOR



VOLTS 120/240 V			PANEL:			FEED: BOTTOM				
MAIN 100A			LOCATION:			MOUNTING:				
LOAD	WATTS A/B	BRKR A/B	AMP P	1 0	2 0	3 0	4 0	5 0	WATTS A/B	LOAD
RECEPTACLES & CLOCK	100	20	11	1	2	50	2	4180	HVAC	
RECEPTACLES	240	20	13	3	4	-	-	4180	HVAC	
LIGHTS	160	20	15	5	6					
LIGHTS	1000	20	17	7	8					
			9	9	10					
			11	11	12					
			13	13	14					
			15	15	16					
			17	17	18					
WATTS / PHASE A= 6040			1860	1000				4180/4180	B= 5780	WATTS/PHASE
TOTAL = 14415			WATTS		61 AMPS 120/240 VOLTS			1-0		5-WIRE
NCL=1440										

NOTES

- 1 4/SDF WEATHER PROOF GUTTER BOX +18"
- 2 HVAC UNIT (SEE SHT. M-1)
- 3 ELECTRICAL PANEL "A"
- 4 EXTERIOR LIGHT FIXTURE
- 5 4x JUNCTION BOX FOR FIRE ALARM OR BELL
- 6 DUPLEX WALL RECEPTACLE 15-A 125-V 3-WIRE
- 7 CLOCK OUTLET (SEE SPEC'S)
- 8 2'X4' FLUORESCENT LIGHT AND FIXTURE 4-TUBE (SEE SPEC'S)

GENERAL NOTES

SCHOOL EQUIPMENT ANCHORAGE

THE FOLLOWING IS FOR THE ELECTRICAL ENGINEER'S INFORMATION ONLY:

THE SEISMIC ANCHORAGE OF ELECTRICAL EQUIPMENT SHALL CONFORM TO C.C.R. TITLE 24, SECTION 2512 (b) AND TABLE 25-P. ANCHORAGE DETAILS FOR ROOF/FLOOR MOUNTED EQUIPMENT HEIGHING LESS THAN 400 LBS. AND HUNG EQUIPMENT HEIGHING LESS THAN 20 LBS. MAY BE OMITTED FROM THE PLANS.

FOR ELECTRICAL DRAWINGS:

ALL ELECTRICAL EQUIPMENT SHALL BE BRACED OR ANCHORED TO RESIST A HORIZONTAL FORCE ACTING IN ANY DIRECTION USING THE FOLLOWING CRITERIA:

EQUIPMENT ON GRADE	20% OF OPERATING HEIGHT
EQUIPMENT ON STRUCTURE	50% OF OPERATING HEIGHT

FOR FLEXIBLY MOUNTED EQUIPMENT USE 4 X THE ABOVE VALUES, AND FOR SIMULTANEOUS VERTICAL FORCE USE 1/3 X THE HORIZONTAL FORCE.

THE ABOVE VALUES ARE FOR AN IMPORTANCE FACTOR, I = 1.0 AND SEISMIC ZONE, Z = 0.4.

WHERE ANCHORAGE DETAILS ARE NOT SHOWN ON THE DRAWINGS THE FIELD INSTALLATION SHALL BE SUBJECT TO THE APPROVAL OF THE ELECTRICAL ENGR. AND THE FIELD ENGINEER OF THE OFFICE OF THE STATE ARCHITECT.



ELECTRICAL PLAN

SCALE 1/4"=1'-0"

REVISED 3/10/95

IDENTIFICATION STAMP
DIV. OF THE STATE ARCHITECT
APPROX 116318
AC/FLS/SS/EX
DATE 05/21/95

6-29-93

ARCHITECT

ELECTRICAL

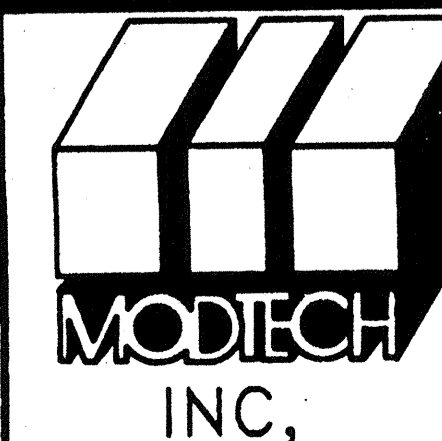
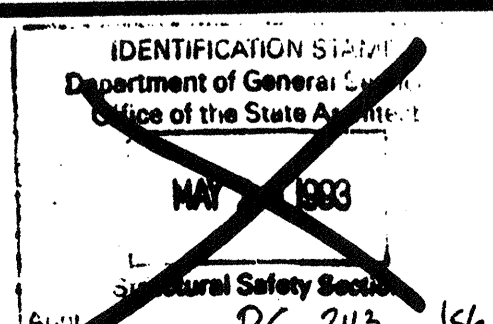
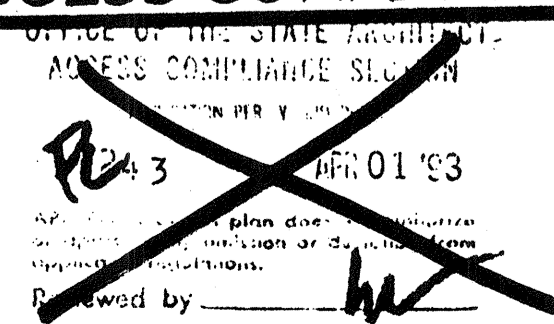
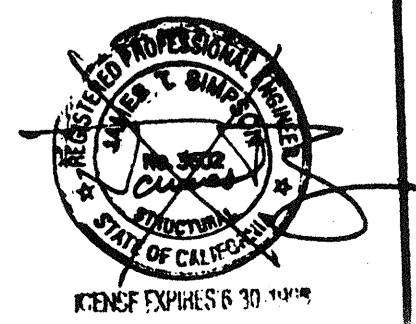
STRUCTURAL

MECHANICAL

FIRE MARSHAL

ACCESS COMPLIANCE

STRUCTURAL SAFETY



JOB # 2058

© MODTECH INC. 1992

STKP-18
4012-064
CLL8.018

DRAWN BY
DATE
CHECKED BY
DATE 5/4/95

ELECTRICAL PLAN

EI.O