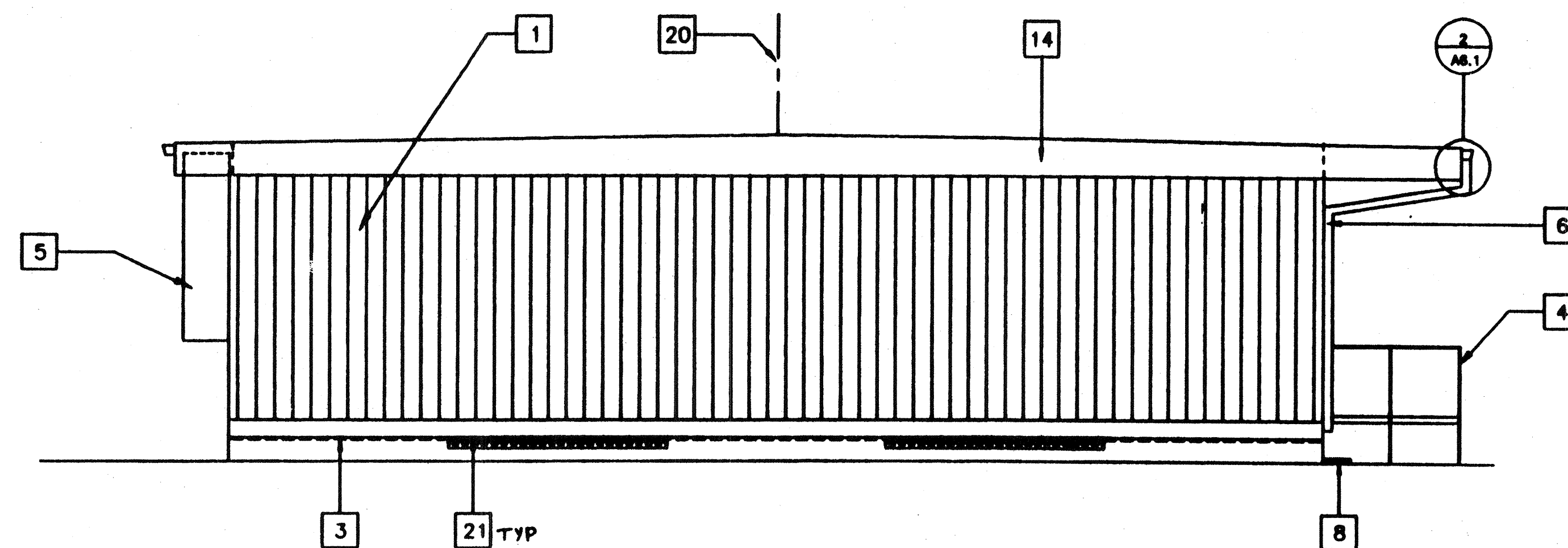


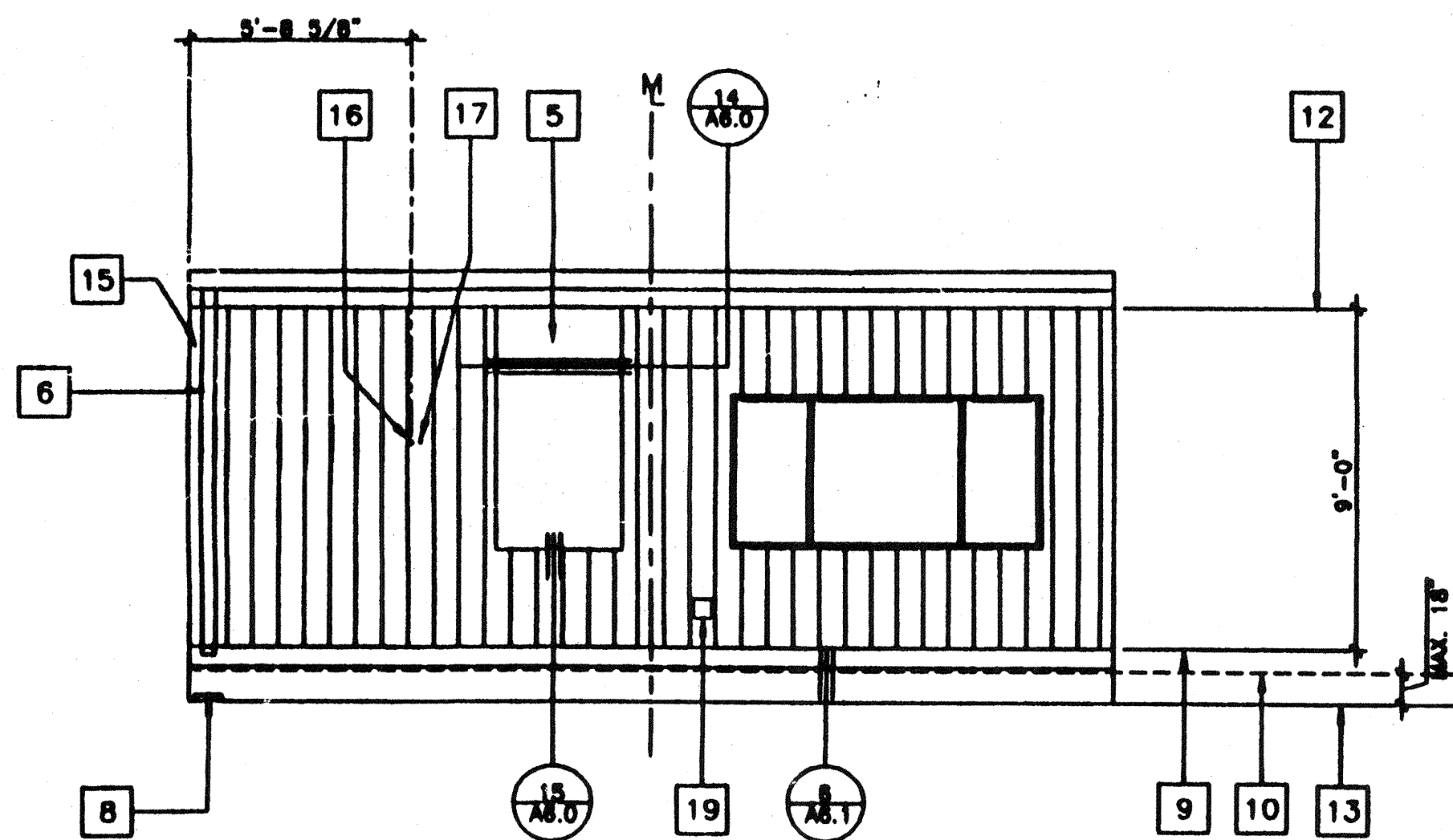
1 FRONT ELEVATION

SCALE 1/4"=1'-0"



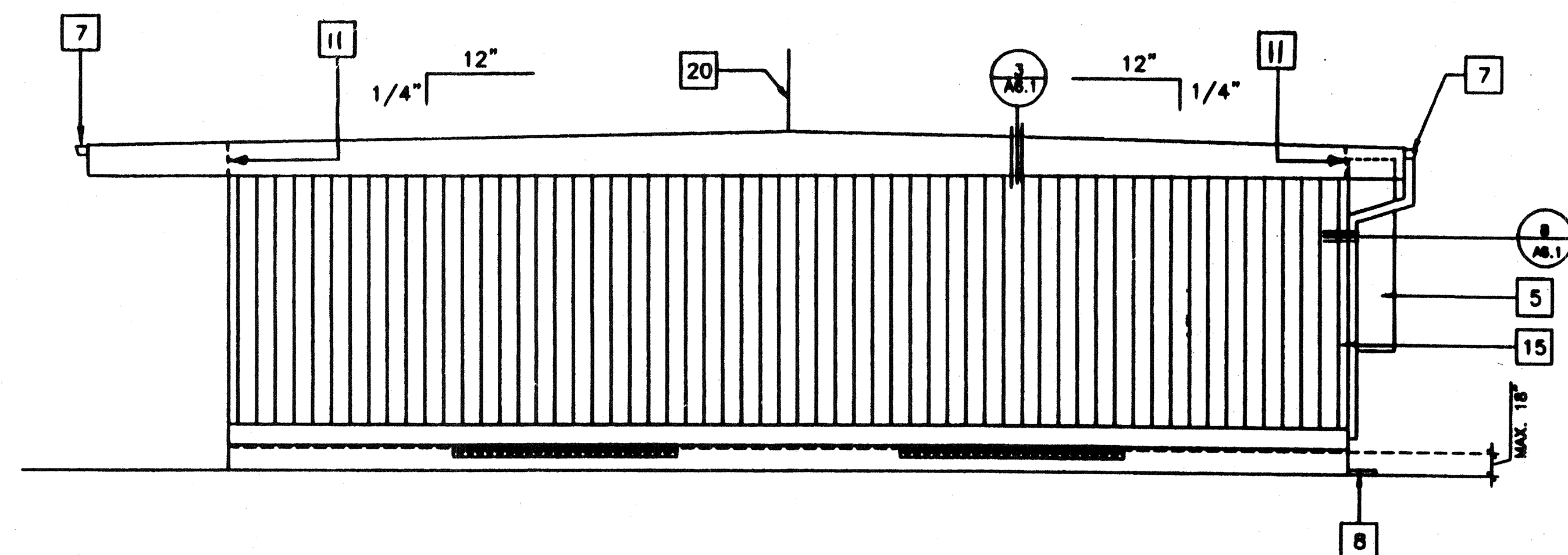
2 LEFT SIDE ELEVATION

SCALE 1/4"=1'-0"



3 REAR ELEVATION

SCALE 1/4"=1'-0"



4 RIGHT SIDE ELEVATION

SCALE 1/4"=1'-0"

24' X 40' (DUAL SLOPE)

## KEY NOTES

- 1 TYPICAL EXTERIOR SIDING (SEE FINISH SCHED.)
- 2 EXTERIOR LIGHT FIXTURE (SEE SPECIFICATIONS)
- 3 TOP OF SKIRTING
- 4 RAMP AND LANDING SEE SHT. R-1
- 5 HVAC UNIT (HV)
- 6 DOWNSPOUT (TYP.) FOR (2). FASTEN TO BLDG. TYP. 3 PLACES (SEE 8/A6.1)
- 7 CONTINUOUS GUTTER WITH DOWNSPOUT (LOCATION OF DOWNSPOUT SHOWN ON ROOF PLAN)
- 8 SPLASH BLOCK (BY OTHERS)
- 9 FINISH FLOOR LINE
- 10 BOTTOM FLANGE OF FLOOR BEAM
- 11 ROOF HEADER
- 12 TOP OF COLUMN
- 13 FINISH GRADE
- 14 ROOF BEAM (STR)
- 15 COLUMN (STR)
- 16 ELECTRICAL STUB-OUT (EL)
- 17 GROUND STUB-OUT (EL)
- 18 FIRE ALARM HORN (EL)
- 19 NEMA GUTTER BOX (EL)
- 20 RIDGE
- 21 FOUNDATION VENT (SEE FOUNDATION PLAN)

## NOTES

IDENTIFICATION STAMP  
DIV. OF THE STATE ARCHITECT  
APPROX 11 6 318  
AC/FLS/SS/EX  
DATE 051215

IDENTIFICATION STAMP  
DIV. OF THE STATE ARCHITECT  
OFFICE OF REGULATION SERVICES  
04 100596  
AC/FLS/SS/EX  
DATE AUG 10 1995

STKP-37 D

REVISIONS	Electrical Engineer's Seal	Mechanical Engineer's Seal	Structural Engineer's Seal	Architect's Seal	Division of the State Architect	PROJECT NUMBER	© MODTECH, INC. 1997	drawn by:	checked by:	date:	modified by:	project no:
1							4012-083	2852	2854			
2												
3												
4												
5												
6												
7												
8												
9												
10												
11												
12												
13												
14												
15												
16												
17												
18												
19												
20												
21												

Electrical Engineer's Seal

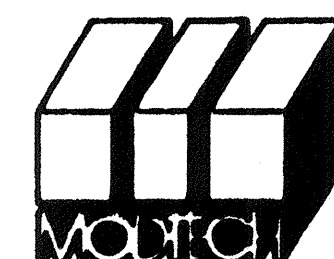
Mechanical Engineer's Seal

Structural Engineer's Seal

Architect's Seal

Division of the State Architect

IDENTIFICATION STAMP  
DIV. OF THE STATE ARCHITECT  
OFFICE OF REGULATION SERVICES  
PC-266  
AC/FLS/SS/EX  
DATE JUN 25 1997



MODTECH INC.  
2830 BARRETT AVENUE  
PERRIS, CALIF. 92572  
PH (909) 943-4014  
FAX (909) 940-0427

PROJECT NUMBER

© MODTECH, INC. 1997  
4012-083

drawn by:  
checked by:  
date:  
modified by:  
project no:

EXTERIOR ELEVATIONS

A3.0

PROJECT NO.

PC-266