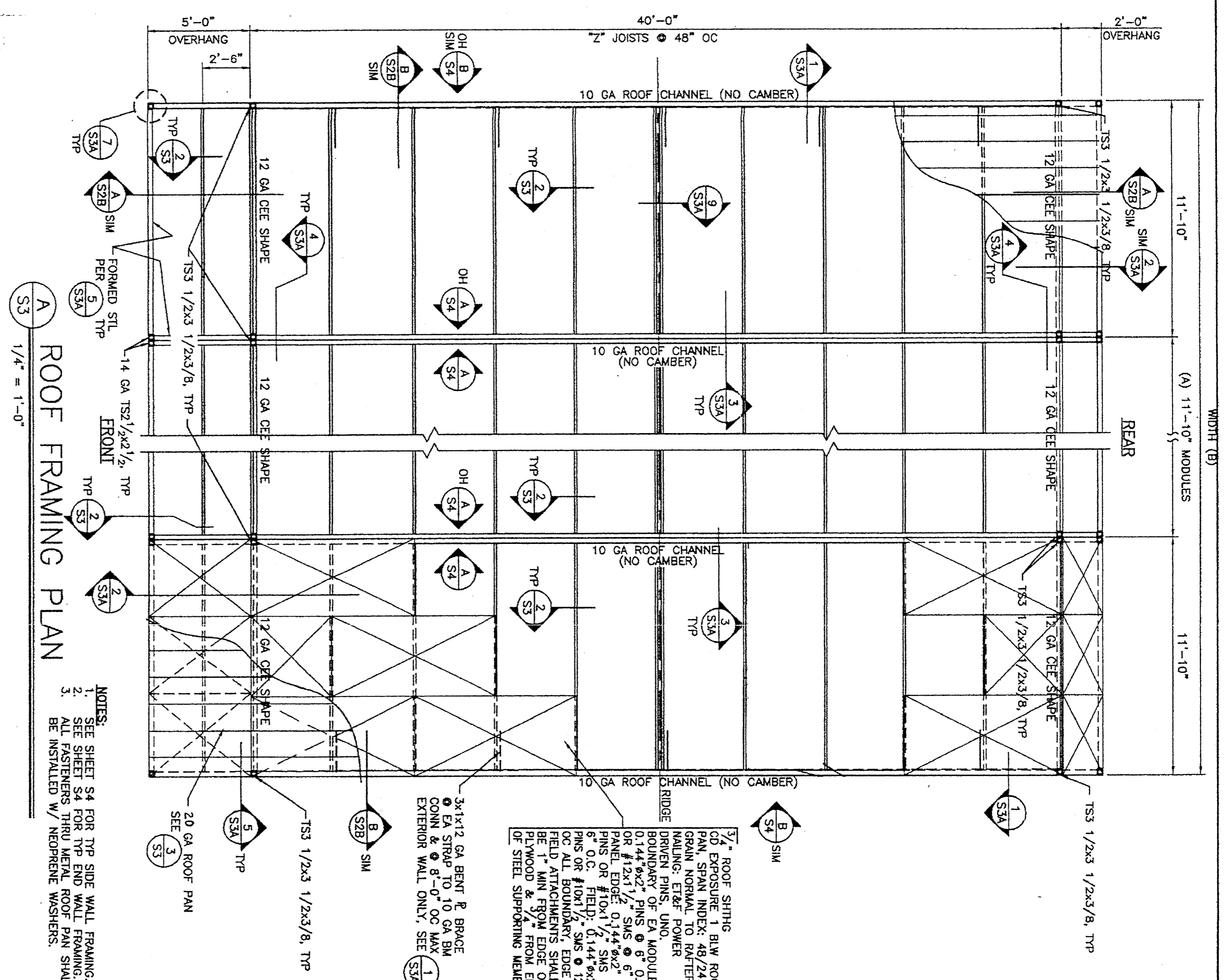
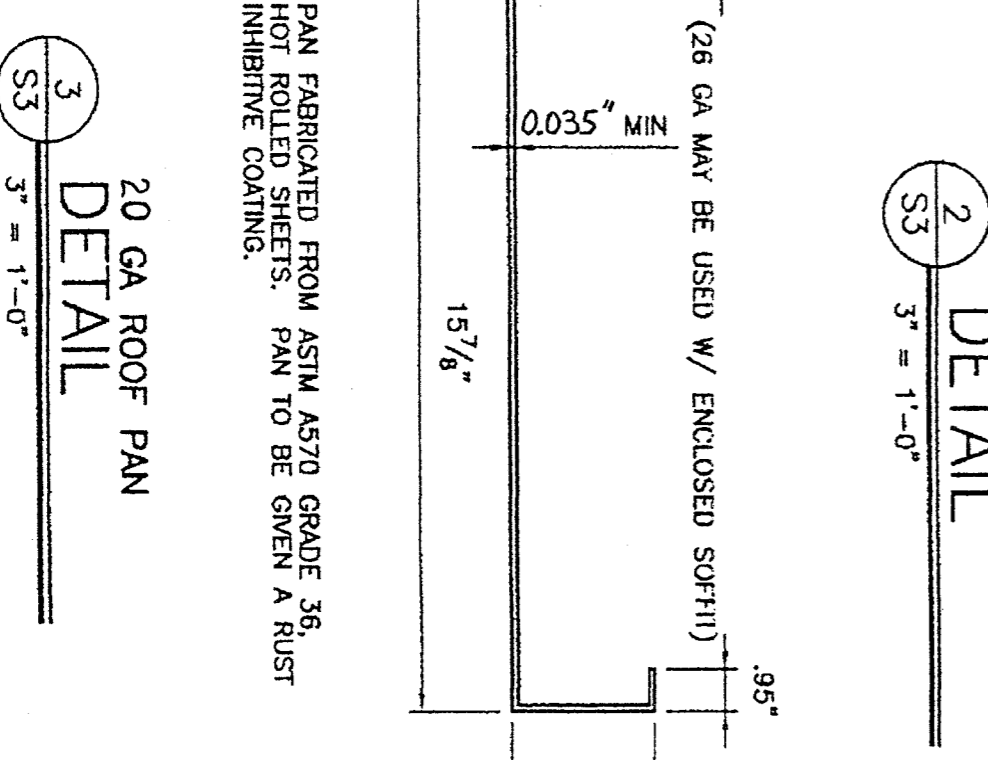


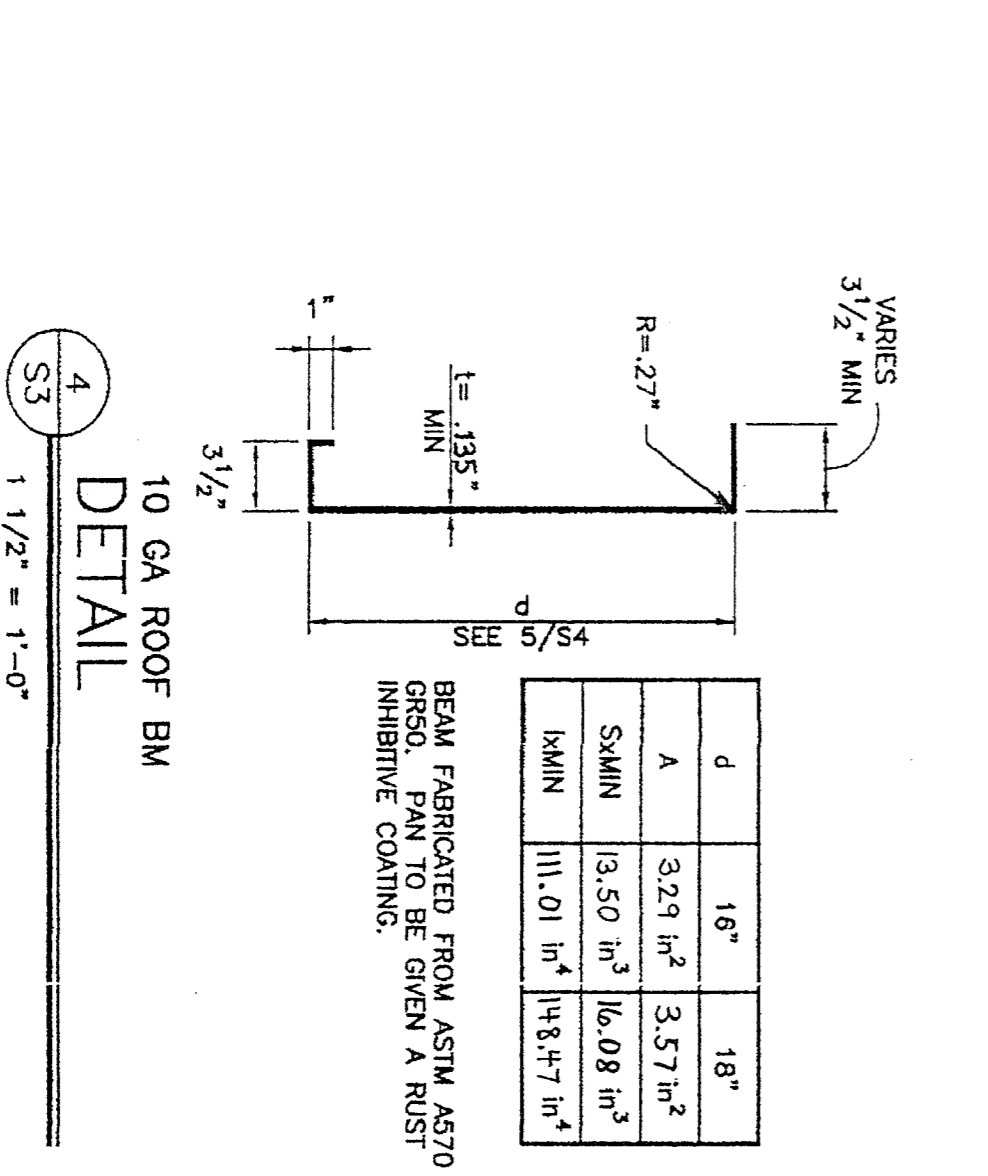
MODULE SCHEDULE	TOTAL # OF 17'x17' MODULES	TOTAL # OF 17'x8' MODULES	TOTAL AREA (SQ FT)
24'x40'	2	0	23'-8"



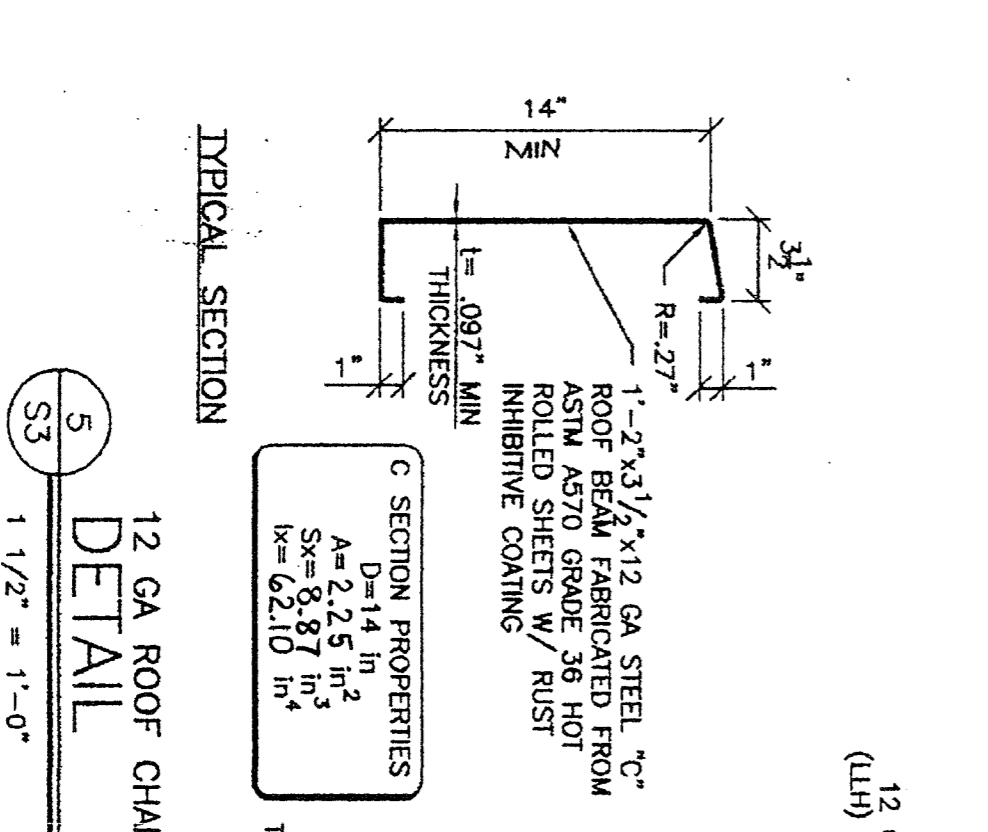
NOTES:
 1. SEE SHEET S4 FOR TYP SIDE WALL FRAMING.
 2. SEE SHEET S4 FOR TYP END WALL FRAMING.
 3. ALL FASTENERS THRU METAL ROOF PAN SHALL BE INSTALLED W/ NEOPRENE WASHERS.



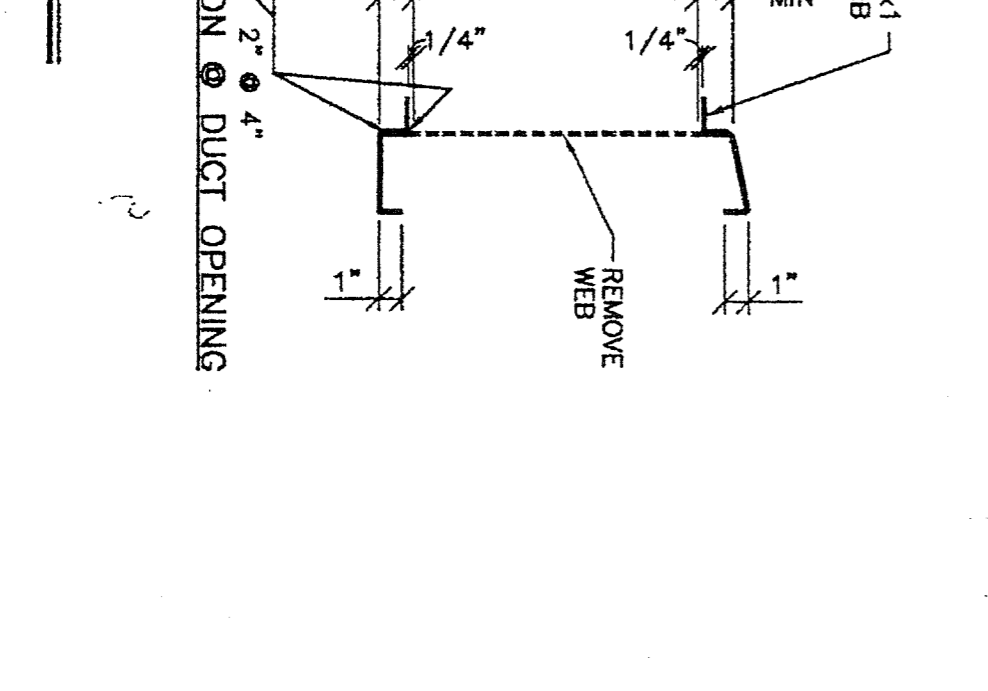
20 GA ROOF PAN DETAIL
 S3 3' = 1'-0"



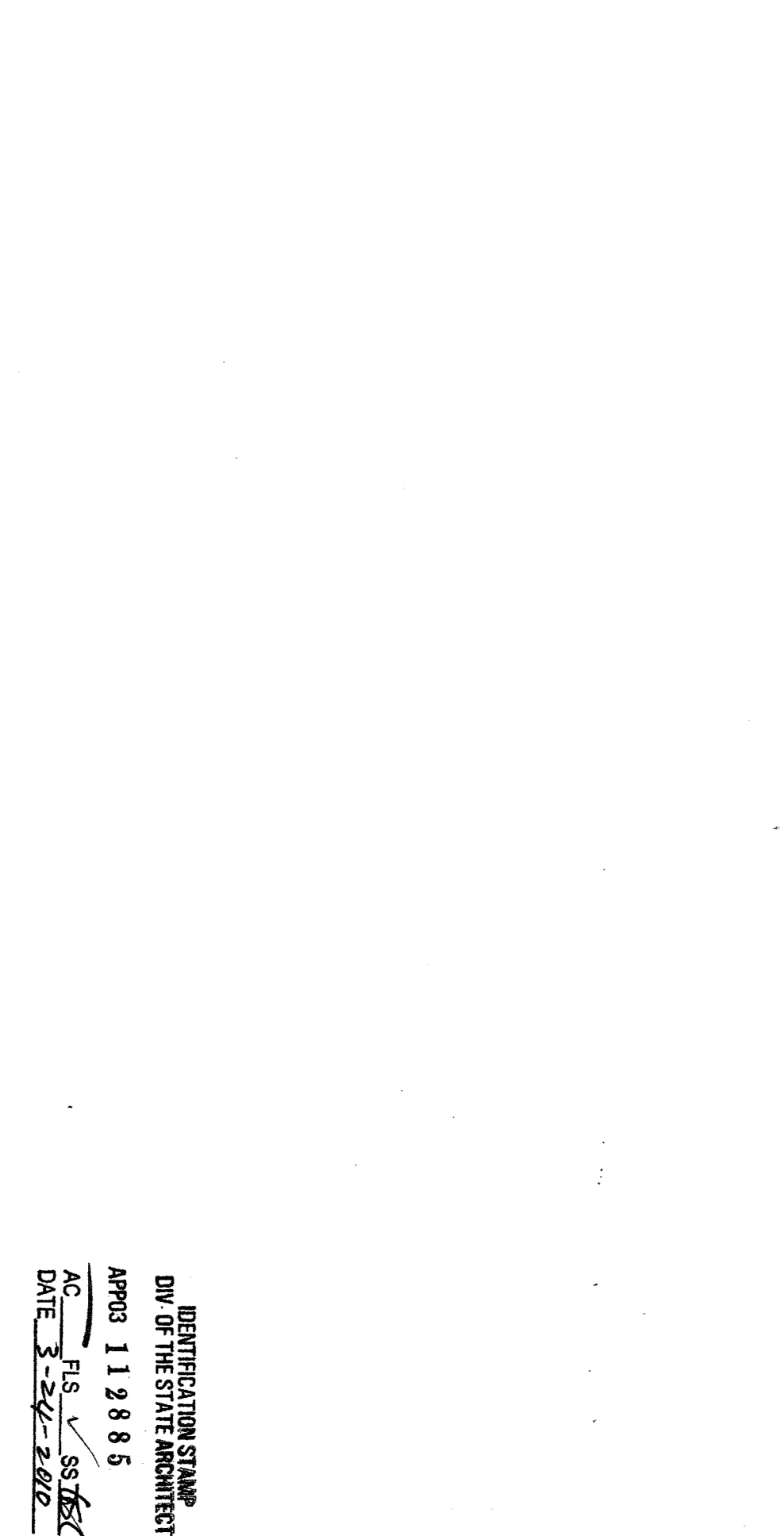
14 GA ROOF PURLIN DETAIL
 S3 3' = 1'-0"



10 GA ROOF BEAM DETAIL
 S3 1 1/2" = 1'-0"



12 GA ROOF CHANNEL DETAIL
 S3 1 1/2" = 1'-0"



TYPICAL SECTION
 S3 1 1/2" = 1'-0"

IDENTIFICATION STAMP
 DIV. OF THE STATE ARCHITECT
 APR03 119885
 FLS S3/S4
 DATE 3-27-2000



ZMS
 American Modular Systems Inc.
 700 Sycamore Road, Suite 200
 San Dimas, California 91768
 (909) 255-1310
 www.americamodular.com

CUSTOMER:
 ROOF FRAMING PLANS & DETAILS

DATE: 6/29/09
SCALE:
DRAWN BY: RIG
DESIGNED BY: KAL
CHECKED BY:
SERIAL NO.:

NO.	DATE	DESCRIPTION

PROJECT NO.: 09052
SHEET NO.: S3