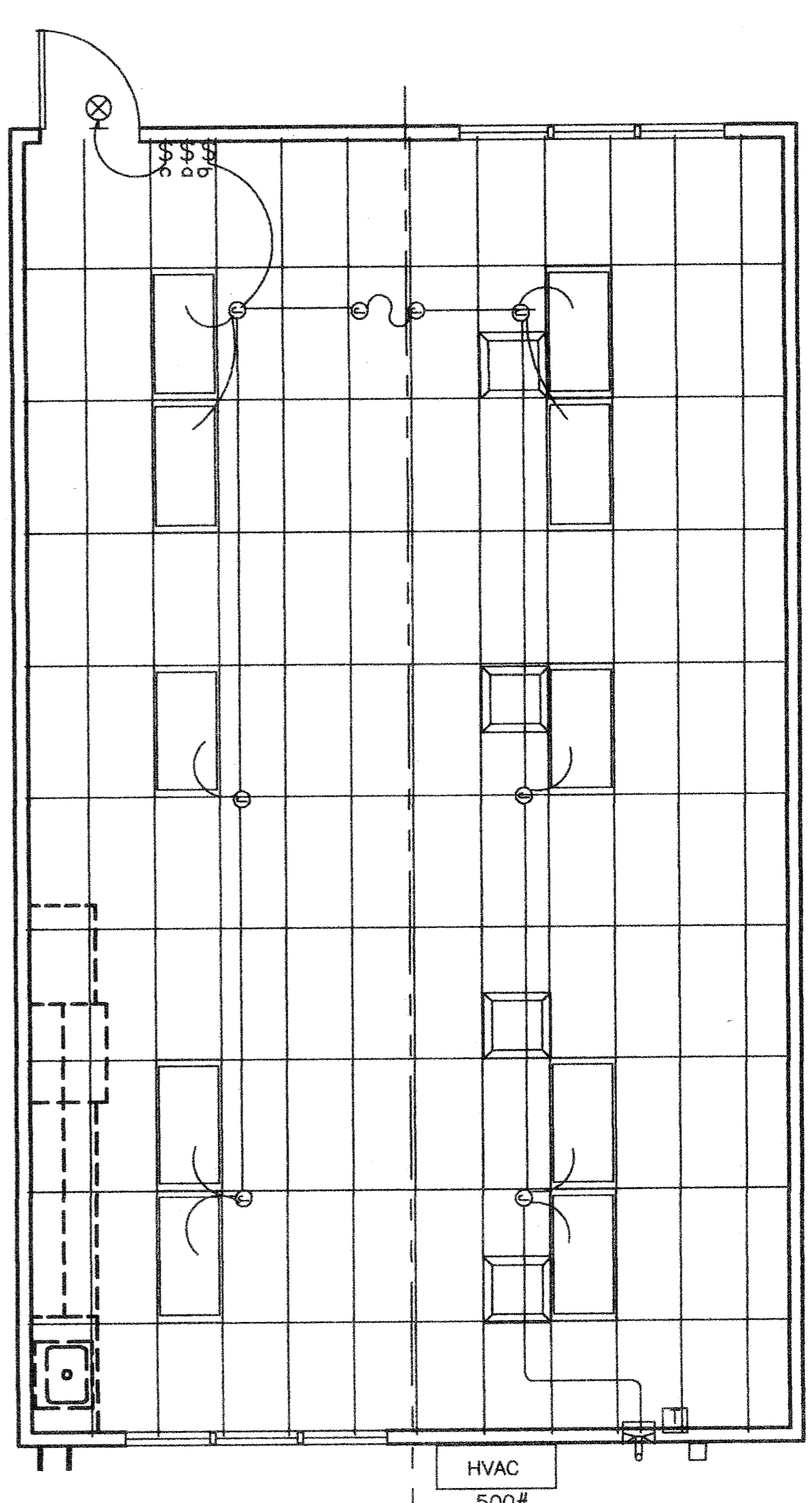


STANDARD ELECTRICAL SYMBOLS

- FLUORESCENT LIGHTING FIXTURE - SURFACE MOUNTED.
- FLUORESCENT LIGHTING FIXTURE - RECESSED.
- INCANDESCENT LIGHTING FIXTURE - WALL MOUNTED (EXTERIOR).
- DUPLEX POLE LIGHT SWITCHES +48", HUBBELL PREMIUM, BRYANT HEAVY DUTY, OR LEVITON SPECIFICATIONS GRADE.
- WALL CLOCK OUTLET WITH POWER OUTLET +84".
- SWITCH SUBSCRIPTS - O=DEVICE CONTROLLED.
- 15 AMP DUPLEX RECEPTACLE +18".
- JUNCTION BOX - SIZE AND TYPE AS REQUIRED.
- PANELBOARD - SEE SCHEDULE.
- TERMINAL CABBINET - SIZE AND TYPE AS NOTED.
- CONDUIT CONCEALED IN CEILING OR WALL.
- CONDUIT CONCEALED BELOW FLOOR OR GRADE.
- HOMERUN TO RESPECTIVE PANEL TO TERMINAL.
- INDICATES #1#14 (GREEN) GROUND WIRE, OTHER SIZES AS INDICATED.
- BRANCH CIRCUIT WITHOUT FURTHER DESIGNATION IS A 2#14 WIRE CIRCUIT. FOR MORE THAN 2#14 WIRES AS FOLLOWS: ---#3#14, ---#4#14 ETC. FOR OTHER SIZES AS FOLLOWS: ---#3#10, ---#4#6 ETC.
- NOTE: FIGURE IDENTIFICATION - LETTER INDICATES TYPE.
- ABBREV. FOR NOT IN ELECTRICAL SECTION OF THESE PLANS AND SPECS.
- MT ABBREV. FOR EMPTY CONDUIT WITH POLY PULL CORD.
- FUSED DISCONNECT SWITCH SIZE AS REQUIRED. PROVIDE FUSES AS RECOMMENDED BY EQUIPMENT SUPPLIER.
- WALL MOUNTED EXHAUST FAN N.I.E.S. CONNECT AS REQUIRED. 50 AMP 250 VOLT RANGE RECEPTACLE.
- FIRE ALARM STATION - OUTLET ONLY, 4" SQ. BOX W/ SINGLE DEVICE RING AND COVER +48 CENTRELINE.
- FIRE ALARM HORN - OUTLET ONLY - 4" SQ. BOX W/ SINGLE DEVICE RING AND COVER +90" MIN. AND NOT LESS THAN 8" BELOW FINISHED CEILING.
- FIRE ALARM VISUAL ALARM - OUTLET ONLY - 4" SQ. BOX W/ SINGLE DEVICE RING AND COVER BOTTOM +80" A.F.F. BUT NO GREATER THAN +96" IF CEILING MOUNTED PER NFPA72 TABLE 6-4.4.1(b).
- SPEAKER - OUTLET ONLY - 4" SQ. BOX W/ SINGLE DEVICE RING AND COVER +84".
- INTERCOM TELEPHONE - OUTLET ONLY - 4" SQ. BOX W/ SINGLE DEVICE RING AND COVER +48".
- FIRE ALARM MINI HORN - OUTLET ONLY - 4" SQ. BOX W/ SINGLE DEVICE RING AND COVER +90" MIN. AND NOT LESS THAN 8" BELOW FINISHED CEILING.



The H.V.A.C. unit feeder circuit - panel circuit breaker, will be disconnected and fuses (where used) of manufacturer - H.V.A.C. units having KVA ratings longer than that indicated on this panel schedule will not be allowed to be installed on this building. If 60 degrees C. wire is to be used in this installation, calculations demonstrating ampacity be provided on the drawing.

F.A.: CONNECT ALL FIRE ALARM JUNCTION BOXES WITH 1/2" MIN. GALV. THIN WALL TUBING (EMT); STUB TO CEILING ONLY.

DO NOT CONNECT FIRE ALARM CONDUIT WITH ANY OTHER ELECTRICAL CONDUIT.

FIRE ALARM PULL STATION +48" TO CENTER & 42" FROM DOOR J-BOX AND COVER ONLY. DEVICE N.I.C. STUB TO CEILING.

FIRE ALARM HORN @ +90" MIN. J-BOX WITH BLANK WEATHERPROOF COVER ONLY. DEVICE N.I.C. STUB TO CEILING.

FIRE ALARM Junction boxes - Galvanized sheet metal, square or rectangular with blank covers. Locate one box at rear of building near main electrical panel at +18" above finish floor for future connection. Covers - Install gasketed, metal, waterproof, finish covers at exterior locations. Install finish covers at interior locations.

If testing results determine fire alarm audibility does not meet 15db over ambient noise levels, additional fire alarm signaling devices may be required by the enforcing agency

1 LIGHT FIXTURE PLAN
1/4" = 1'-0"

2 ELECTRICAL PLAN
1/4" = 1'-0"

3 ELECTRICAL DISTRIBUTION PLAN
1/4" = 1'-0"

CLASSROOM
CARPET
2-#6-1-#10 GND. 3/4"

PROVIDE #8 CU BOND GROUNDING LUGS ON ROOF STEEL BEAM @ EA.

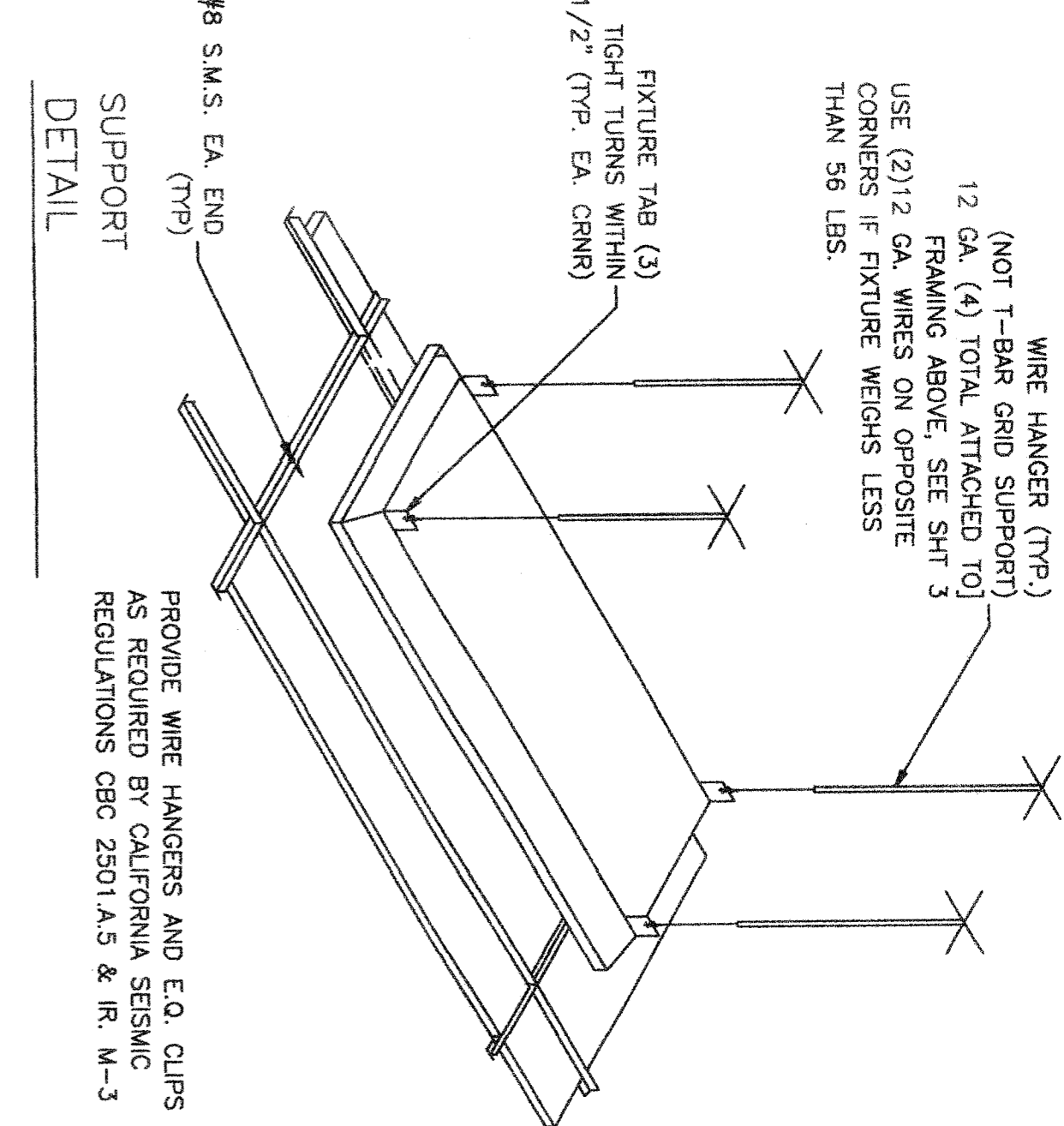
REAR WALL MOUNTED HEAT SEE ELECTRICAL NOTE #2.

GROUND ROD BOX BY OTHERS.

NOTE: THE PROJECT ARCHITECT SHALL BE RESPONSIBLE FOR THE PLACEMENT OF HEAT AND SMOKE DETECTORS WHEN THE SITE SPECIFIC PROJECT IS REQUIRED TO MEET THE PROVISIONS OF SB 575

NOTE: STUB OUT LOCATIONS FOR ELECTRICAL PANEL, FIRE ALARM, AND DATA BOXES. LOCATIONS SHOWN ARE DIAGRAMMATIC ONLY. EXACT LOCATIONS MAY VARY +/- SEVERAL FEET. PLEASE CONTACT AMERICAN MODULAR SYSTEMS FOR EXACT LOCATIONS. POINT OF CONNECTION WILL BE AT FACE OF BUILDING.

IDENTIFICATION STAMP
DIV. OF THE STATE ARCHITECT
APPROX 11 28 8 5
AC WMS 3-24-2010



WIRE HANGER (TYP.) (NOT T-BAR GRID SUPPORT) 12 GA. (4) TOTAL ATTACHED TO FRAMING ABOVE. SEE SHFT 3 USE (2) 1/2 GA. WIRES ON OPPOSITE CORNERS IF FIXTURE WEIGHS LESS THAN 56 LBS.

PROVIDE WIRE HANGERS AND E.O. CLIPS AS REQUIRED BY CALIFORNIA SEISMIC REGULATIONS CBC 2501.A.5 & IR. M-3

FIRE ALARM SYSTEM

- THE FIRE ALARM SYSTEM SHALL CONFORM TO THE CALIFORNIA ELECTRICAL CODE, ARTICLE 760 K&L, FIRE CODE ART. 10.
- INSTALLATION OF THE FIRE ALARM SYSTEM SHALL NOT BE STARTED UNTIL DETAILED PLANS AND SPECIFICATIONS, INCLUDING CALIFORNIA STATE FIRE MARSHAL LISTING NUMBERS FOR EACH COMPONENT OF THE SYSTEM HAVE BEEN APPROVED BY THE DIVISION OF THE STATE ARCHITECT.
- UPON COMPLETION OF THE INSTALLATION OF THE FIRE ALARM SYSTEM, A Satisfactory Test of the entire system shall be made in the presence of the Fire Marshal and the State Architect.

GENERAL NOTES

- GROUNDING ELECTRODE CONDUCTOR SIZED PER CBC 250-94 & ALLOW FOR 12" MOVEMENT IN ANY DIRECTION IF PAID FOUNDATION IS USED.
- PROVIDE BONDS TO BLDG. STEEL & PANEL (#8 CU)
- PANEL TO LISTED FOR USE AS SERVICE EQUIPMENT.

FIGURE NOTES:

- ALL FLUORESCENT LIGHT FIXTURES SHALL HAVE ENERGY SAVING LAMPS AND BALLASTS.
- LUMINAIES/BALLASTS SHALL BE CERRIED PER CALIFORNIA BUILDING CODE TITLE 24, PART 9.7. SHALL BE CONTROLLED BY THE DIVISION OF THE STATE ARCHITECT.
- TO PROVIDE TWO LEVELS OF LIGHTING, SWITCH (SA) SHALL CONTROL THE TWO OUTER LAMPS AND SWITCH (SB) SHALL CONTROL THE TWO INNER LAMPS.

ELECTRICAL

- Electrical service drop and connectors supplied by others.
- Manufactured by others. Provide stub-out from back of panel through the exterior wall for receiving either underground or overhead service & fitting for grounding cable.
- Electrical panel board shall be recess mounted inside the building. Sized to accommodate all connected loads including spaces as shown. Overcurrent protective devices in the panel boards have adequate short circuit interrupting capacity. All buses including bus shall be copper or aluminum.
- 2x4 fluorescent fixtures shall be steel frame, lens shall be hinged and lock-down. Panel shall be KHS-119 or KHS-120. Castille Inc #C-12 or Pishoff, Inc. #P121A. Minimum lens thickness shall be .125 inch.
- Fluorescent ballast shall be energy saver, while maintaining full light output, class "P".
- Fluorescent full light output, class "P", equipped with thermal protectors, guaranteed against failure for (2) years and be replaced from inside the fixture.
- Clock - 12" dial clock on clock outlet.

A) Clock shall be General Electric model 2912 129V 60 cycle outlet shall be Bryant #2828 or equal with separable hanging clip & opp'd recept.

SYMBOL	DESCRIPTION	WATTS	MANUFACTURER
⊗	2x4 FLUORESCENT DROP IN FUTURE, ACRYLIC PRISMATIC LENS, (3)35 WATT TUBES, WT. 27 LBS.	SP41 32 W	CRESCENT MASTER 24CP33ZFSM11KOVU1 SLAVE 24CP33ZFSM11XXV6
⊕	FLUORESCENT SURFACE MOUNTED EXTERIOR LIGHT WITH IMPACT RESISTANT ENCLOSURE, 1.25 THICK CLEAR PRISMATIC ONE PIECE LENS W/ NEOPRENE GASKET & "POSSICRIP" STAINLESS STEEL SCREWS.	(2) 7W 2700 K	KENALL 3714 OR LITHONIA 202 2/7PL LP

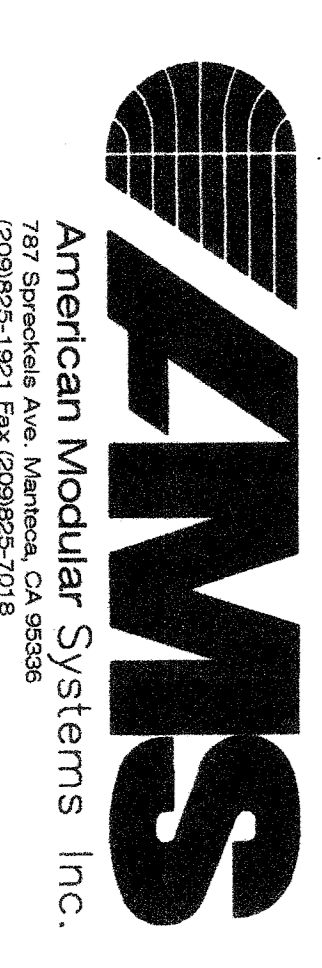
SEE TYPICAL CLASSROOM LAYOUT FOR LOCATIONS OF ALL DEVICES. FIGURE MOUNTING SHALL COMPLY WITH CALIFORNIA SEISMIC REGULATIONS.

VOLTS:	120/240 SINGLE PHASE		PANEL: A		FEED: EXTERIOR LB	
	MAIN:	100 AMP MAIN BKR.	LOCATION:	INTERIOR	INTERIOR	MOUNTING: FLUSH
LOAD						
LIGHTS, FLUORESCENT	960	960	15	1	1	
EXTERIOR LIGHT & CLOCK	100	100	15	1	1	
DUPLEX RECEPT.	720	720	15	1	1	
SPACE			11	1	1	
			12	1	1	
			14	1	1	
			16	1	1	
			15	1	1	
			17	1	1	
PHASE WATTAGE	1880	1880	4476	4476	4476	
TOTAL WATTS "A" LEG: 6556			1181	1181	1181	
TOTAL WATTS "B" LEG: 6156			65	65	65	
TOTAL WATTS: 15455			AMP(S) 120/240V	SINGLE PHASE	100AMP BUS.	



AC WMS 3-24-2010
DATE

24 X 40 HP(ES)
RELOCATABLE
CLASSROOMS



CUSTOMER:
BAKERSFIELD CITY SCHOOL DISTRICT

ELECTRICAL PLAN & NOTES

DATE: 03/31/08
SCALE: NONE
DRAWN BY: RS
CHECKED BY:
SERIAL NO.

NO.	DATE	DESCRIPTION

PROJECT NO.
SHEET NO. E1