

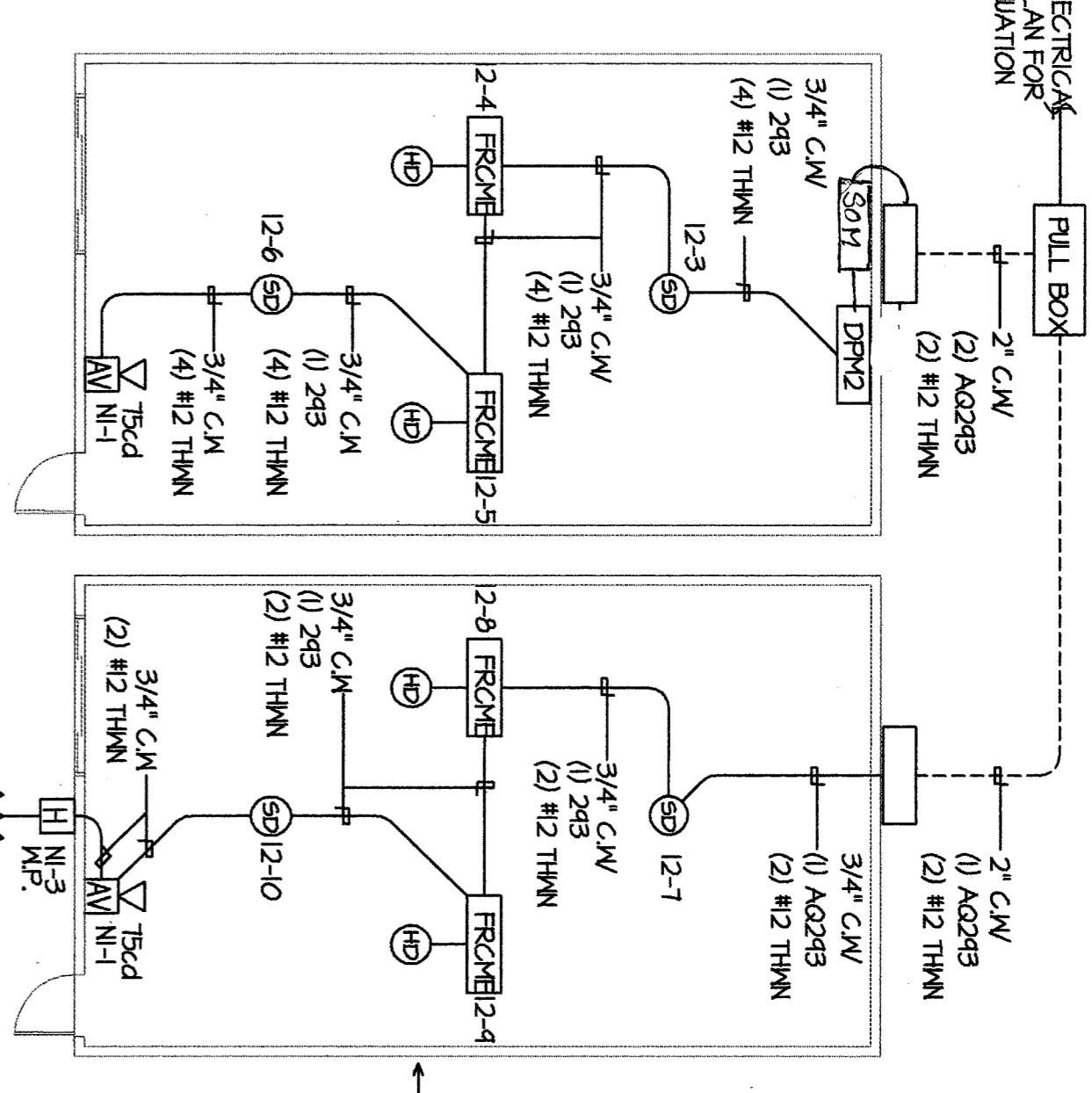
**GENERAL NOTES**

1. VISIT SITE AND VERIFY EXISTING CONDITIONS PRIOR TO BID.
2. THE ELECTRICAL WORK SHALL BE INSTALLED IN ACCORDANCE WITH THE CALIFORNIA ELECTRICAL CODE AND ALL APPLICABLE LOCAL ORDINANCES. WHERE PLANS CALL FOR A HIGHER STANDARD THAN APPLICABLE CODES, THE PLANS SHALL GOVERN.
3. CONDUIT RUNS ARE SHOWN DIAGRAMMATICALLY. EXACT LOCATIONS SHALL BE DETERMINED IN THE FIELD TO SPLIT FIELD CONDITIONS.
4. ALL ELECTRICAL EQUIPMENT AND APPLIANCES SHALL BE LISTED BY A RECOGNIZED LISTING AGENCY UNDER THE LABEL OF APPROVAL.
5. CONTRACTOR SHALL FURNISH, INSTALL AND CONNECT ALL MATERIAL AND EQUIPMENT FOR THIS WORK UNLESS OTHERWISE NOTED.
6. GROUNDING AND BONDING SHALL BE PER CODE PLUS ANY ADDITIONAL PROVISIONS SPECIFIED OR SHOWN ON DRAWINGS.
7. ALL CONDUIT RUNS SHALL CONTAIN A CODE-SIZED GROUND/CONDUCTOR HAVING IDENTIFICATION.
8. THESE PLANS ARE NOT COMPLETE UNTIL APPROVED BY THE AUTHORITY.
9. ALL CONDUCTORS SHALL BE IN CONDUIT.
10. ALL CONDUCTORS SHALL BE COPPER WITH TYPE THHN/THWN INSULATION.

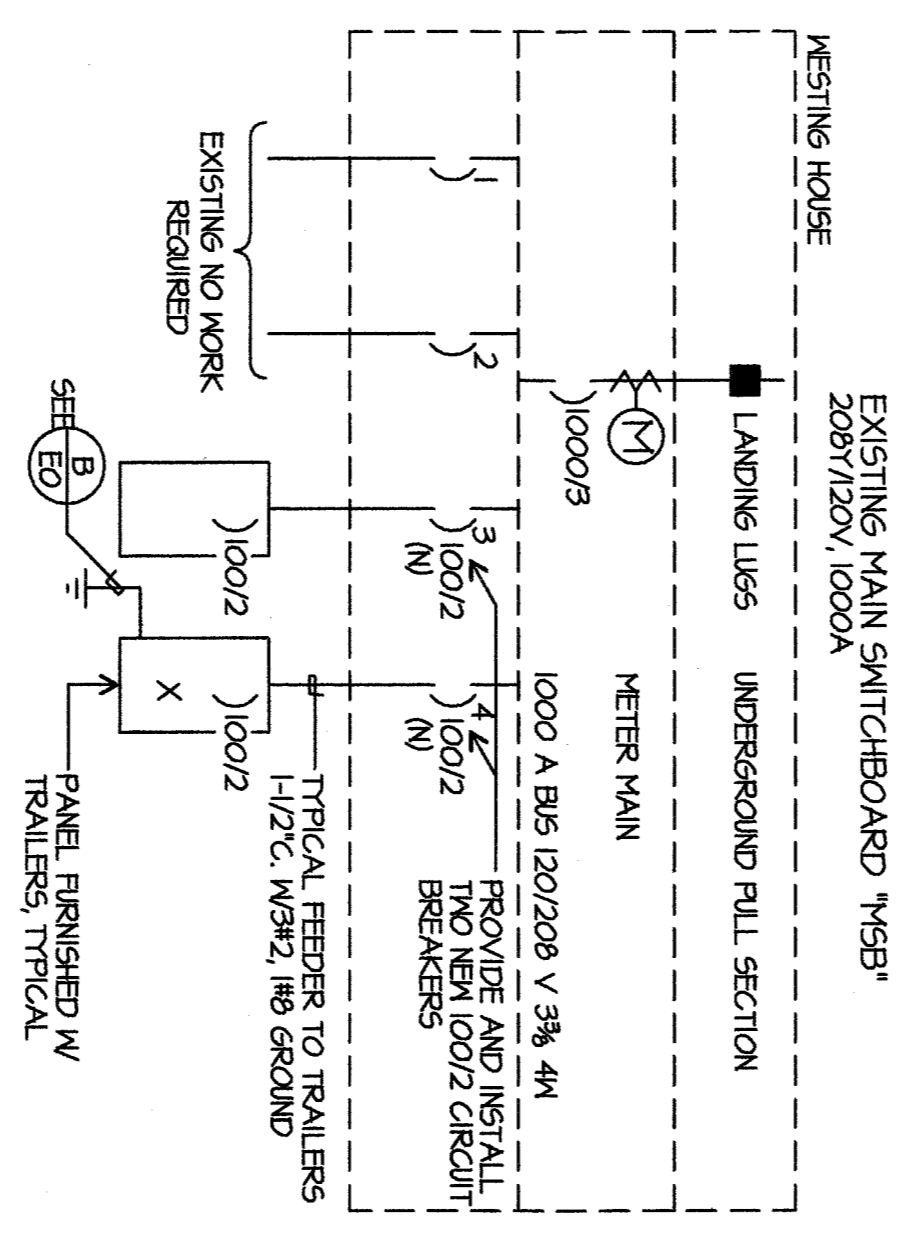
**CODE REQUIREMENTS**

PERFORMANCE OF THE WORK OF THIS CONTRACT SHALL CONFORM TO THE REQUIREMENTS OF APPLICABLE GOVERNING CODES AND ORDINANCES INCLUDING THE FOLLOWING:

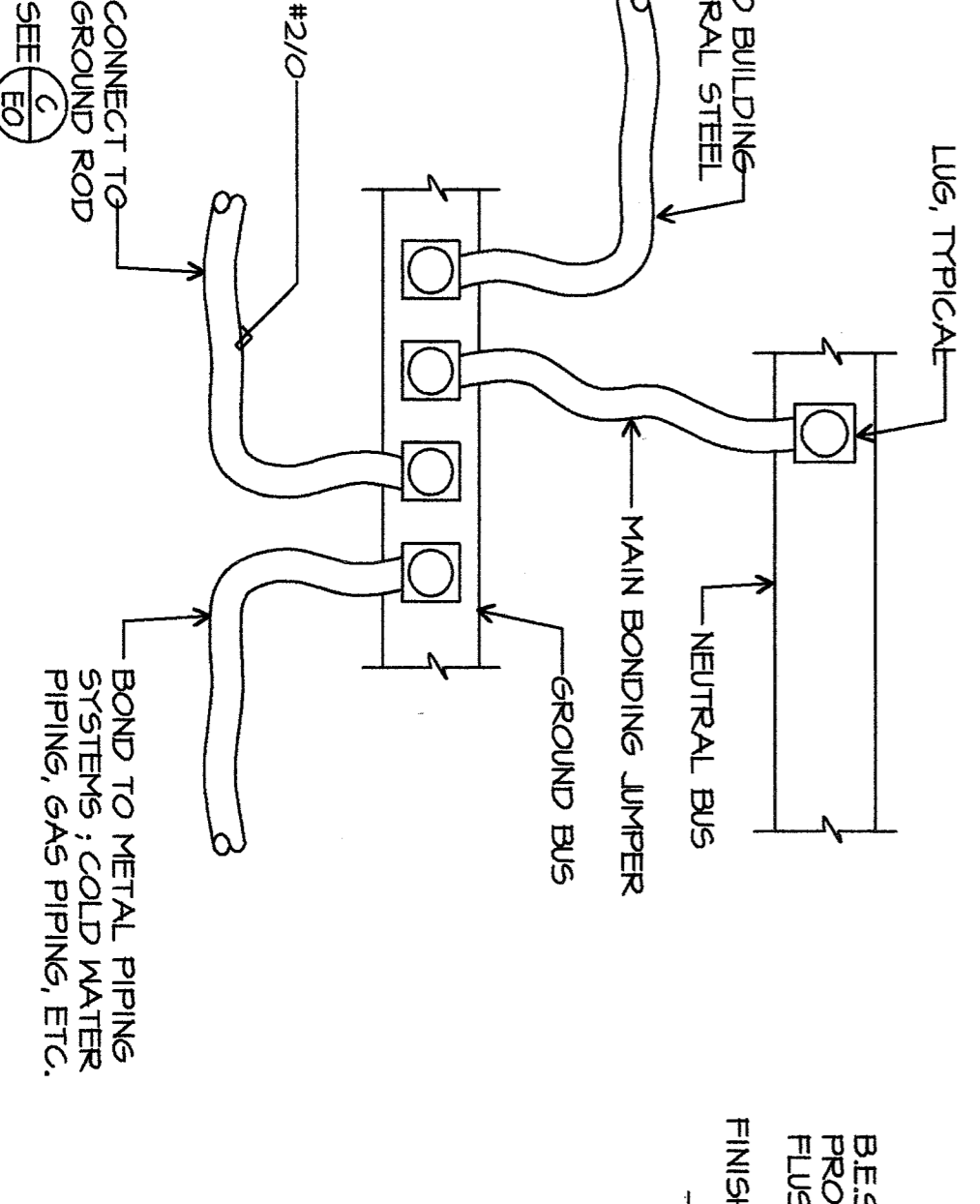
2007	BUILDING STANDARDS ADMINISTRATIVE CODE, PART 1, TITLE 24, C.C.R.
2007	CALIFORNIA BUILDING CODE, PART 2, TITLE 24 C.C.R. (2006 IBC, VOLUMES 1-3 WITH CALIFORNIA AMENDMENTS)
2007	CALIFORNIA ELECTRICAL CODE, PART 3, TITLE 24 C.C.R. (2005 N.E.C. WITH CALIFORNIA AMENDMENTS)
2007	CALIFORNIA MECHANICAL CODE, PART 4, TITLE 24 C.C.R. (2006 U.M.C. WITH CALIFORNIA AMENDMENTS)
2007	CALIFORNIA PLUMBING CODE, PART 5, TITLE 24 C.C.R. (2006 U.P.C. WITH CALIFORNIA AMENDMENTS)
2007	CALIFORNIA FIRE CODE, PART 9, TITLE 24 C.C.R. (2006 I.F.C. WITH CALIFORNIA AMENDMENTS)
2007	CALIFORNIA REFERENCED STANDARDS, PART 12, TITLE 24 C.C.R. TITLE 19 C.C.R. PUBLIC SAFETY, STATE FIRE MARSHAL REGULATIONS.
2007	2007 EDITION AUTOMATIC SPRINKLER SYSTEM
2007	2007 EDITION STANDPIPE SYSTEM
2007	2002 EDITION VEH. CHEMICAL SYSTEM
2007	2007 EDITION PRIVATE SERVICE MAINS
2007	2007 EDITION NATIONAL FIRE ALARM CODE (NOTE SEE UL STANDARDS 1971 FOR (VISUAL DEVICES))



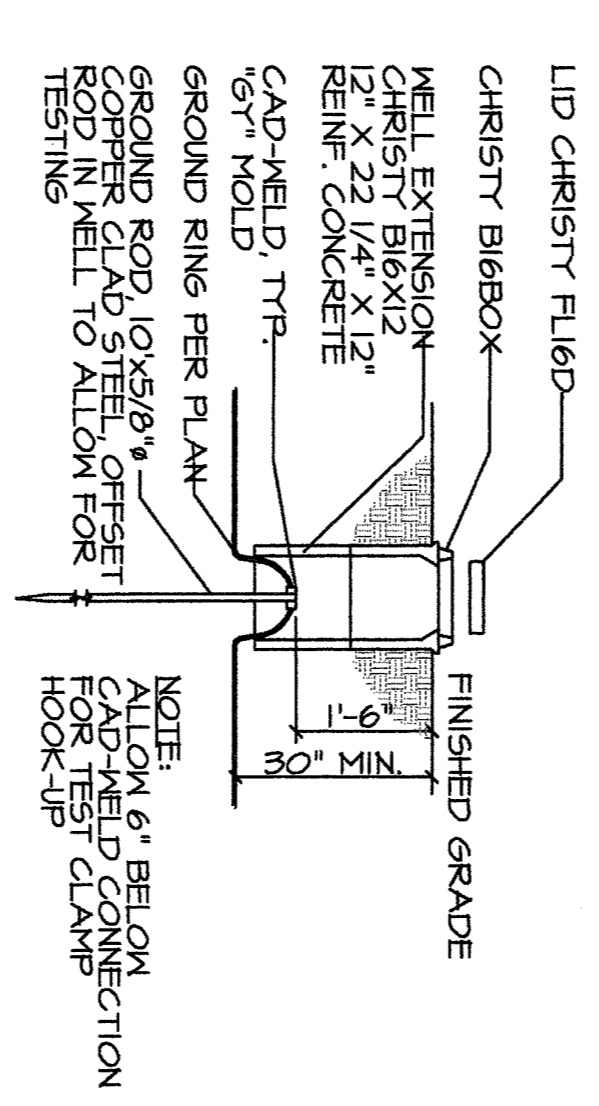
**ENLARGED FIRE ALARM PLAN**  
SCALE: 1/8" = 1'-0"



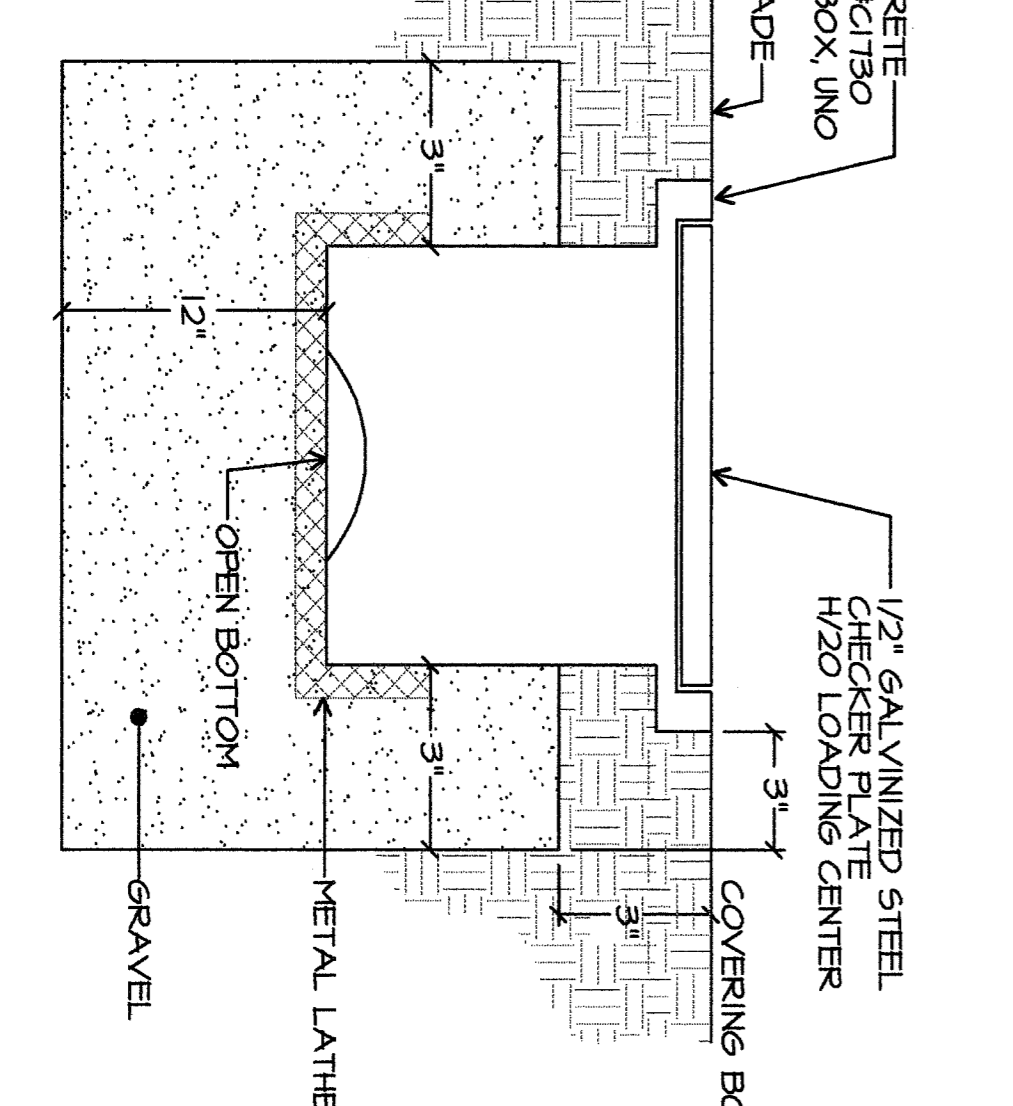
**SINGLE LINE DIAGRAM**  
SCALE: NONE



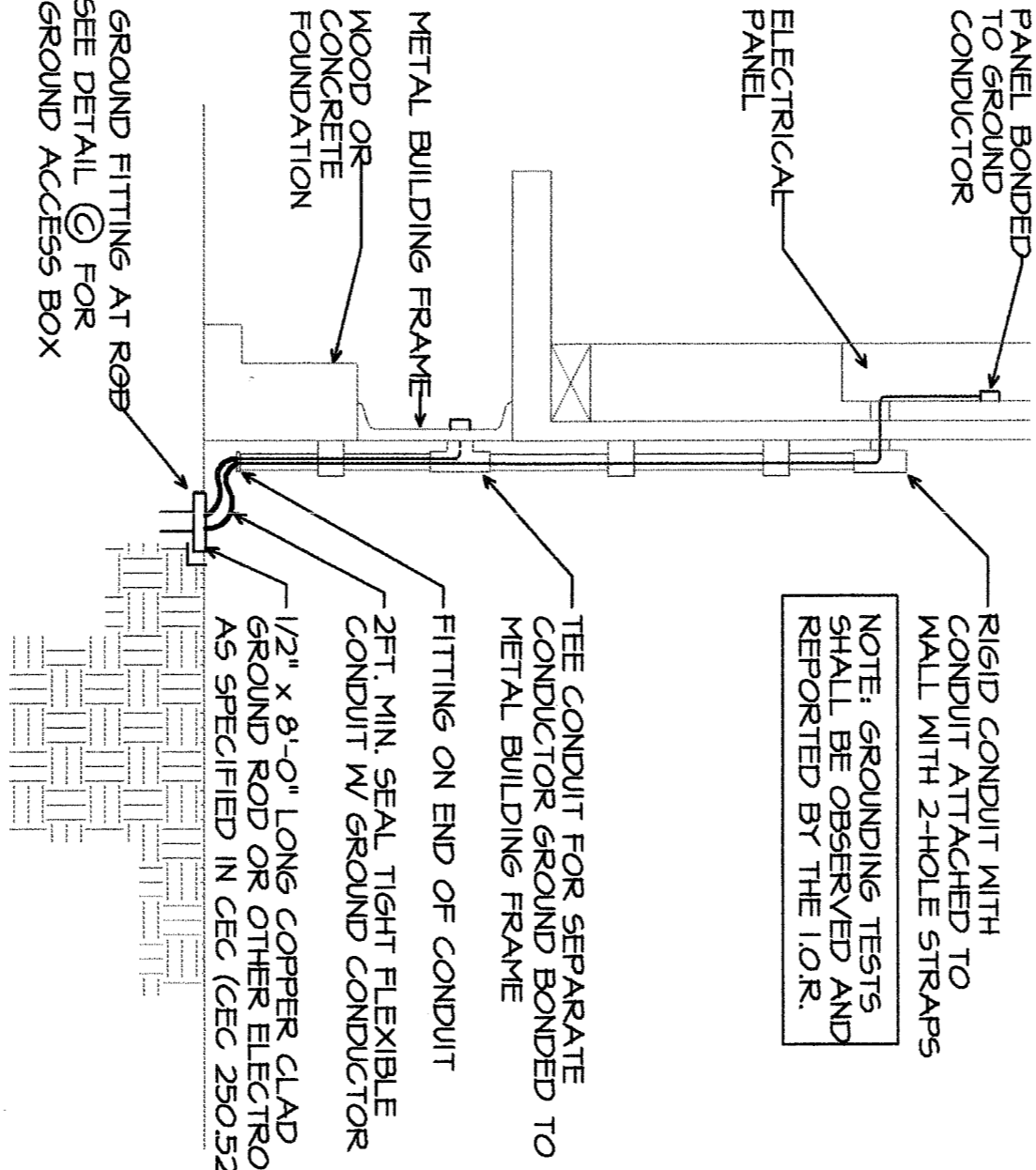
**BONDING DIAGRAM**  
SCALE: NONE



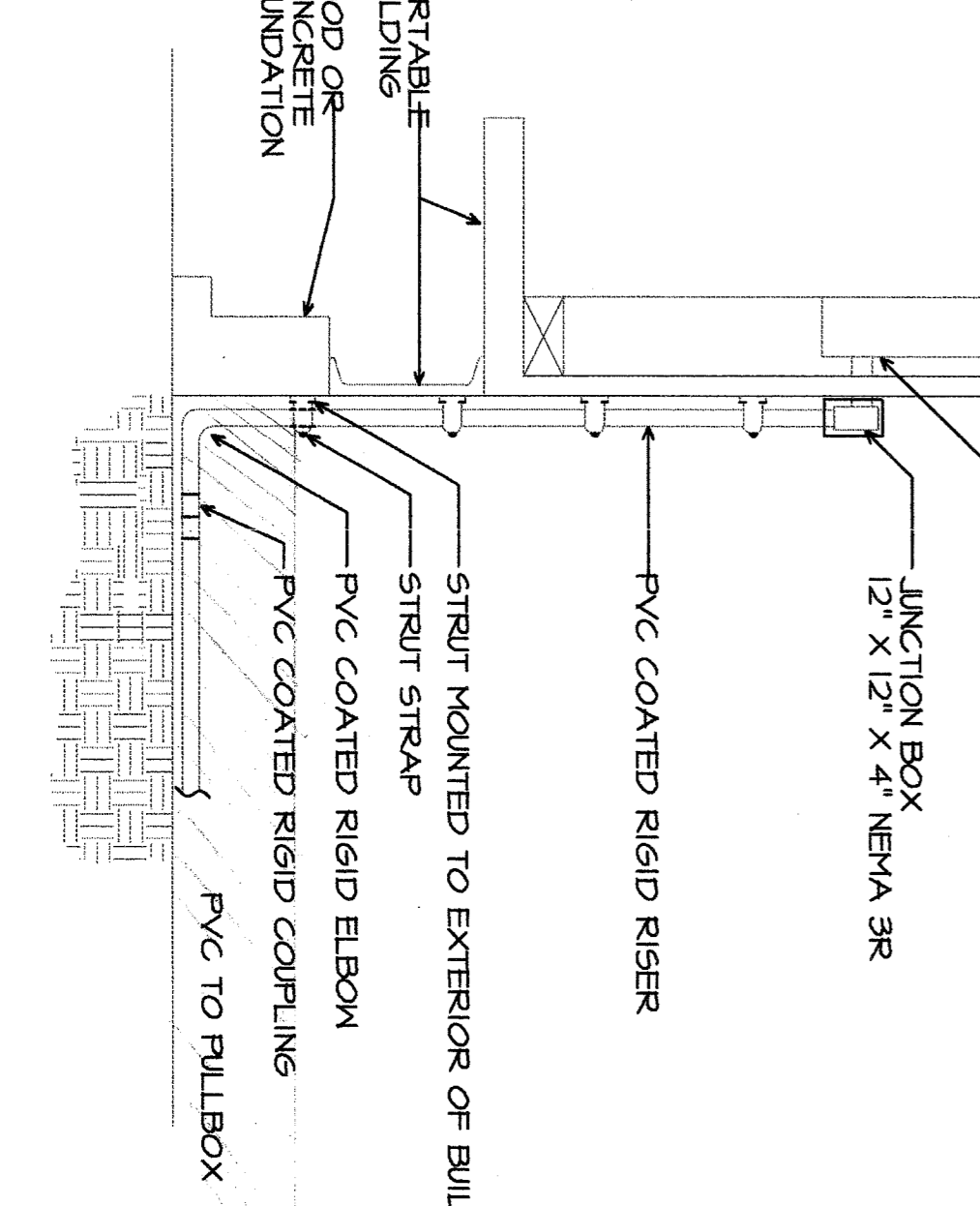
**GROUND ACCESS BOX**  
SCALE: NONE



**FLUSH PULLBOX DETAIL**  
SCALE: NONE



**TYPICAL TRAILER GROUNDING**  
SCALE: NONE



**TYPICAL PORTABLE CONNECTION**  
SCALE: NONE

**SYMBOLS**

○	CONDUIT ENROUTE
○	CONDUIT CONCEALED IN WALL OR CEILING
○	CONDUIT CONCEALED UNDER FLOOR OR BELOW GRADE
○	CONDUIT STRIPPED AIR AND GATED
○	CONDUIT TURNED UP
○	CONDUIT TURNED DOWN
○	HIGH MARKS INDICATE NO. OF #s. Wires IN CODE 9-20
○	CONDUIT (2) MAX. IN 1/2" C., (3) MAX. IN 3/4" C., (4) MAX. IN 1", NO MARKS = 2 #s.
○	ONE OR MORE LETTERS IN PANEL NUMBER(S) INDICATES CIRCUIT(S)
○	GROUND CONNECTION
○	DISTRIBUTION SWITCHBOARD OR PANEL
○	PANEL, BRANCH CIRCUIT TYPE, SERVICE AND FLUSH SIGNAL TERMINAL (CABINET), SERVICE & FLUSH
○	FLUORESCENT FIXTURE
○	ANILET DATA BAR INDICATES WALL MOUNT LETTER INDICATES SWITCH CONTROL, NO INDICATES CIRCUIT
○	SERVICE FIXTURE ON FLUSH OUTLET
○	RECEIVED FIXTURE WITH JUNCTION BOX FOR THE WIRING
○	EXIT LIGHT WITH REARON AS SHOWN ON PLANS, WALL AND CEILING MOUNT
○	LOW LEVEL EXIT SIGN, 4" AFF., 4" FROM DOOR JAMB
○	LEFT FUTURE DESIGNATION LETTER INDICATES TYPE, NO INDICATES WATTAGE. SEE FUTURE SCHEDULE
○	MECHANICAL EQUIPMENT DESIGNATION
○	SEE MECHANICAL DRAWINGS.
○	SPECIAL RECEPTACLE - SEE PLAN
○	HETTER
○	FLUSH FLOOR RECEPTACLE
○	RECEPTACLE REFLX. BA, 19A, NEMA 5-15R, 48" UNO
○	RECEPTACLE REFLX. MFD, ABOVE DASKERFLASH
○	RECEPTACLE W/ALUMINUM HALF SWITCHED
○	GROUND FAULT CIRCUIT INTERRUPTING RECEPTACLE
○	DOUBLE RECEPTACLE
○	CEILING RECEPTACLE
○	RECEPTACLE REFLX. 20A, 19A, NEMA 5-20R, 48" UNO
○	JUNCTION BOX 4" SQUARE, 1/2" DEEP UNO
○	TERMINAL BOX, 48" UNO
○	MOTOR, NO INDICATES HORSEPOWER
○	CLOCK OUTLET, 17-0" UNO
○	DISCONNECT SWITCH, NON-FUSED
○	DISCONNECT SWITCH, FUSED (HORIZONTAL RATED OR SEEB 15 NOTED)
○	MAINTENANCE WORKER'S SWITCH WITH DISCONNECT SWITCH AND FUSES
○	WORKER'S MOTOR SWITCHER W/UNDERLAYS IN EXHA FLOOR
○	DRUMMER W/INTERVAL, 24-0" SW.
○	PHOTOCELL
○	SHAKE DETECTOR
○	TELEPHONE/COMPUTER/DATA OUTLET, TWO GANG BOX W/1 GANG COVERPLATE & GROUNDLED OPENING 48" UNO
○	CABLE TV OUTLET, 48" UNO
○	MOTION SENSOR
○	ENGINE SWITCH
○	SINGLE POLE SWITCH
○	DOUBLE POLE SWITCH
○	THREE WAY SWITCH
○	SWITCH W/FLAT LT.
○	MANUAL MOTOR SWITCHER
○	FIRE ALARM CONTROL PANEL
○	GROUND FAULT CIRCUIT INTERRUPTING
○	LABOR SAVING TRAYBOX
○	MAIN LINES ONLY
○	WITH
○	CONDUIT ONLY
○	WEATHERROOF
○	W.P.
○	F.B.O.
○	U.N.O.
○	N.E.C.
○	NATIONAL ELECTRICAL CODE
○	NOT IN CONTRACT
○	ENGINE
○	NEW
○	REMOVE
○	RELOCATE
○	SERVICE MOUNT
○	S.M.
○	UNDERGROUND
○	CWP
○	CAD WATER PRE
○	ABOVE FINISHED FLOOR
○	HEATING AND AIR CONDITIONING RATED CIRCUIT BREAKER
○	HACR
○	N.L.

NOTE: NOT ALL SYMBOLS SHOWN ARE USED ON THIS PROJECT.

**ORR DIZ**  
**MELBRY**  
ARCHITECTS, INC.

SUITE 280  
5800 KING AVENUE  
BAKERSFIELD, CALIFORNIA 93309  
TELEPHONE (861) 852-5258  
FACSIMILE (861) 852-4291

IDENTIFICATION STAMP  
DIV. OF THE STATE ARCHITECT

APPROX 11 28 85  
ACQ. THIS FILE SS 8/2  
DATE 3-24-2010

DANNY E. ORR, AIA  
ARCHITECT C-4-1728  
WILLIAM J. MELBRY, AIA  
ARCHITECT C-16855

**BAKERSFIELD CITY SCHOOL DISTRICT**  
1300 BAKER STREET  
BAKERSFIELD, CALIFORNIA 93305

MARK DATE DESCRIPTION

CHECKED BY: \_\_\_\_\_  
JOB NUMBER: 1024  
CADD DRAWING FILE: 1124 SITE PLAN.dwg  
DRAWN BY: \_\_\_\_\_

CHECK AND GENERAL DIMENSIONS BEFORE PROCEEDING TO THE ARCHITECT. THE DRAWINGS, IDEAS AND DESIGNS REPRESENTED ON THE SHEET ARE THE PROPERTY OF ORR DIZ MELBRY ARCHITECTS, INC. 2008

**GENERAL NOTES SYMBOLS, CODES REQUIREMENTS**

SHEET IDENTIFICATION NUMBER **E-0**  
SHEET #450 OF \_\_\_\_\_