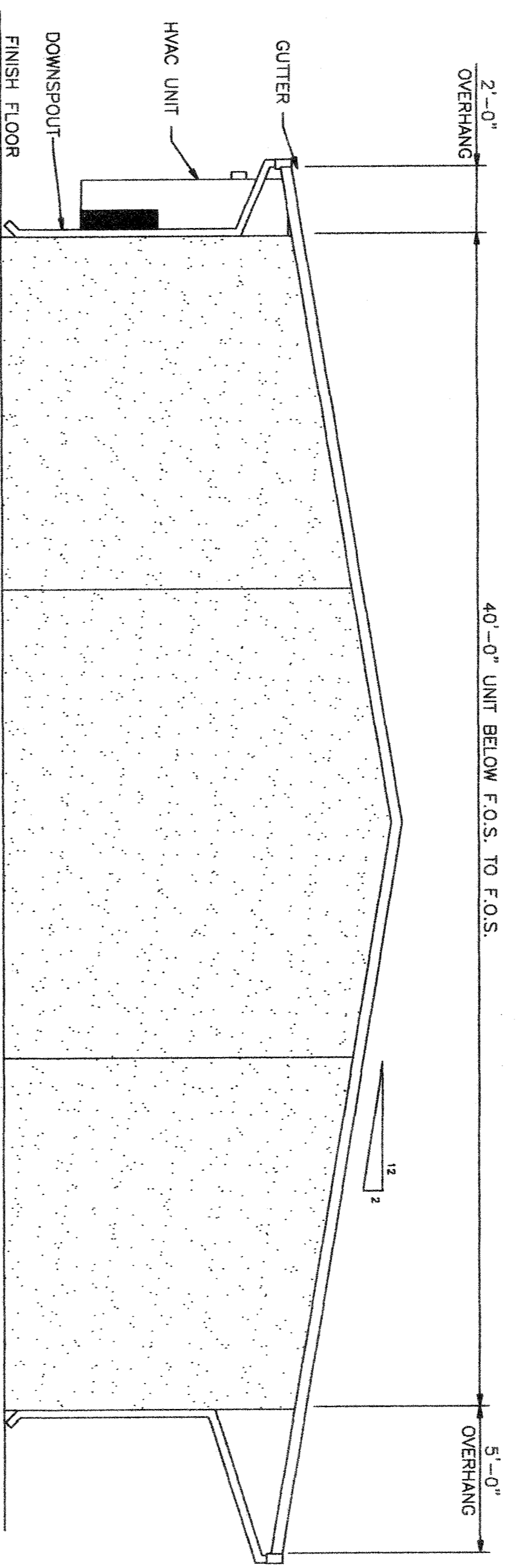
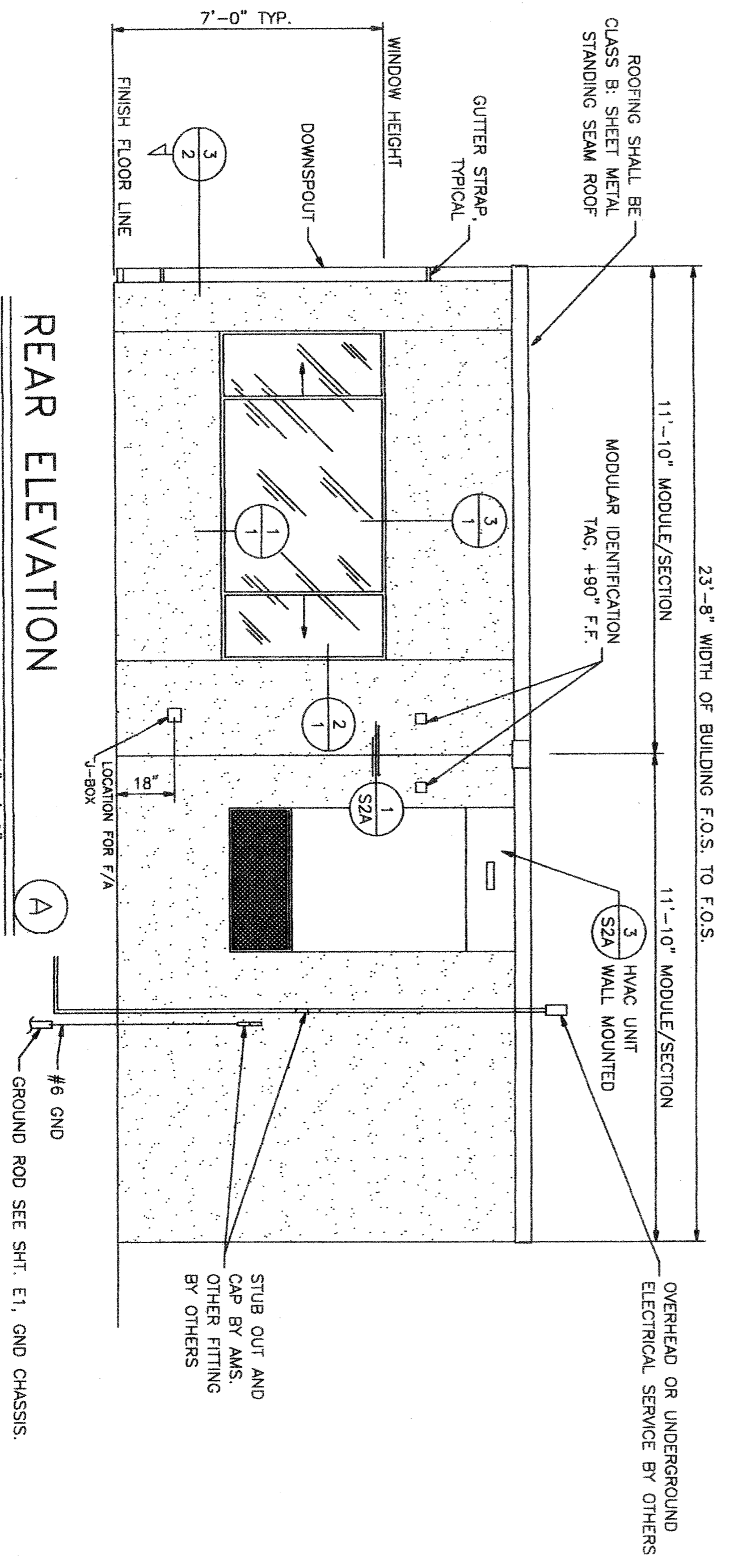


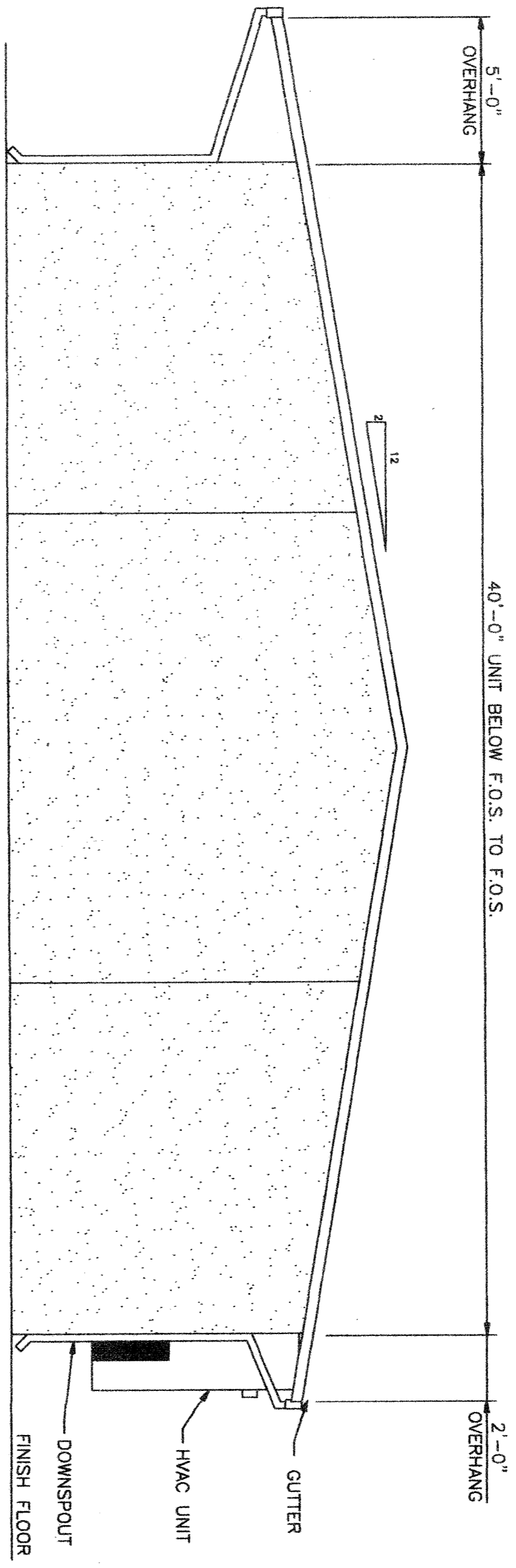
FRONT/ENTRY ELEVATION
SCALE: 3/8" = 1'-0"



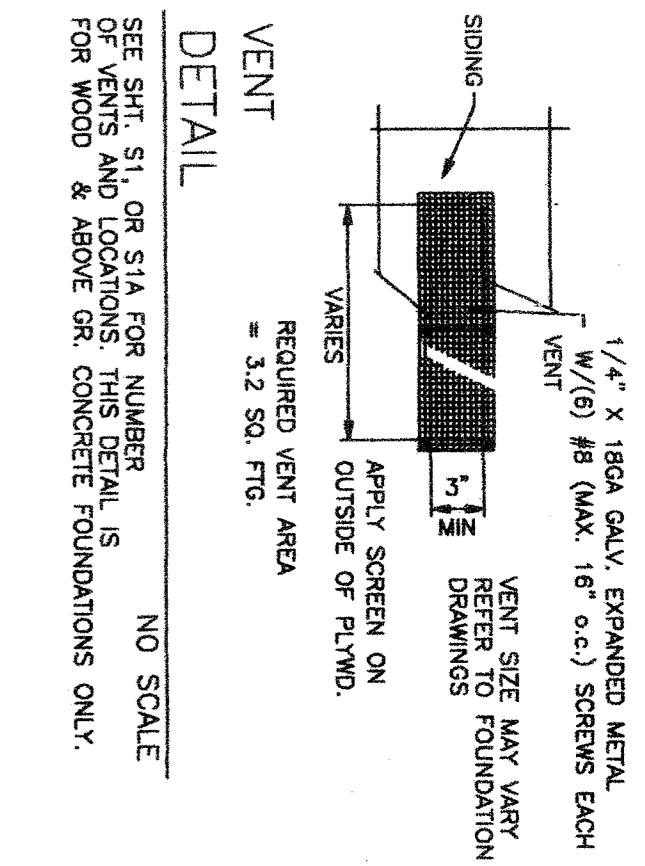
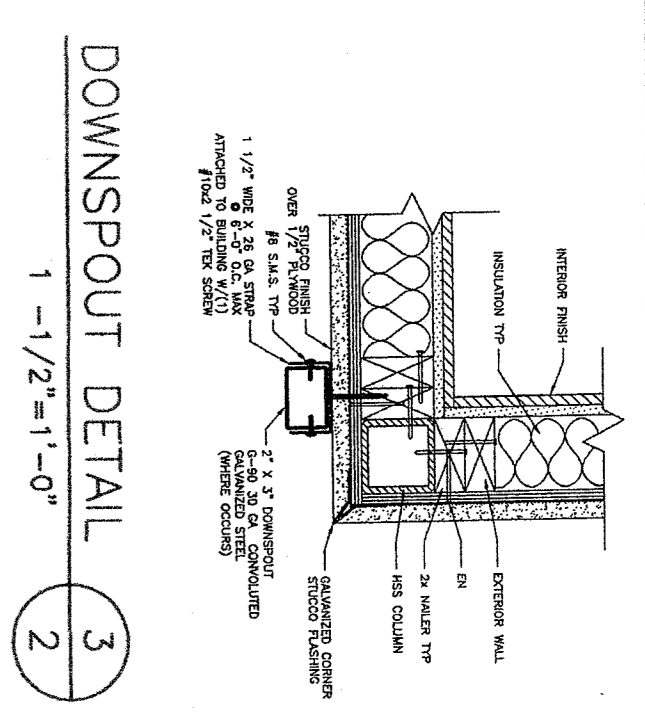
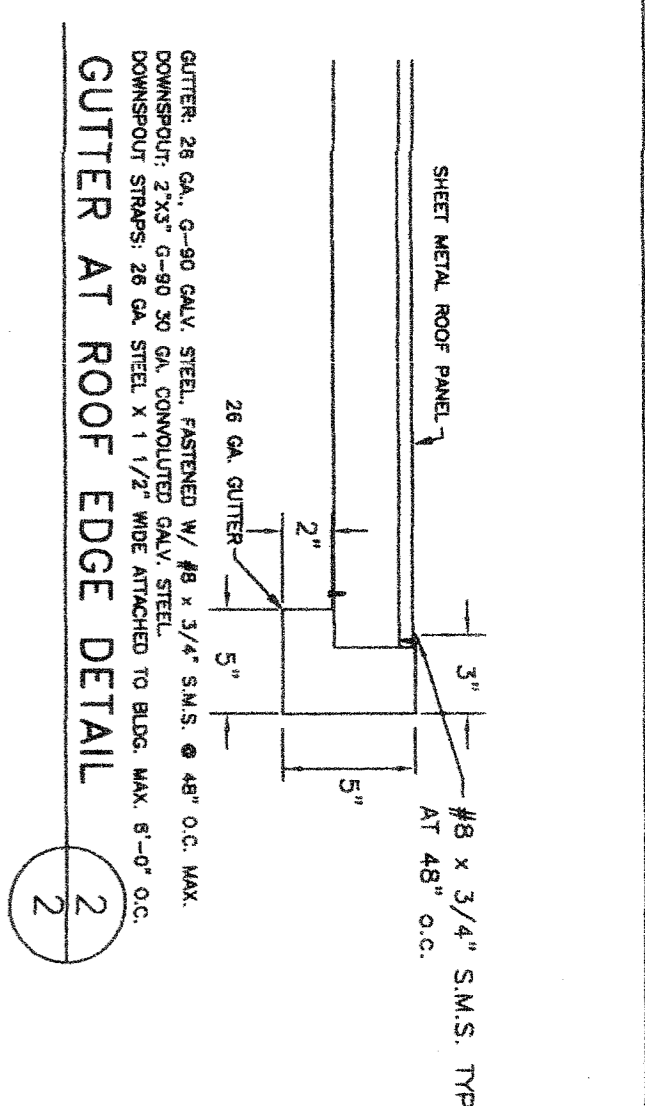
LEFT SIDE ELEVATION
SCALE: 1/4" = 1'-0"



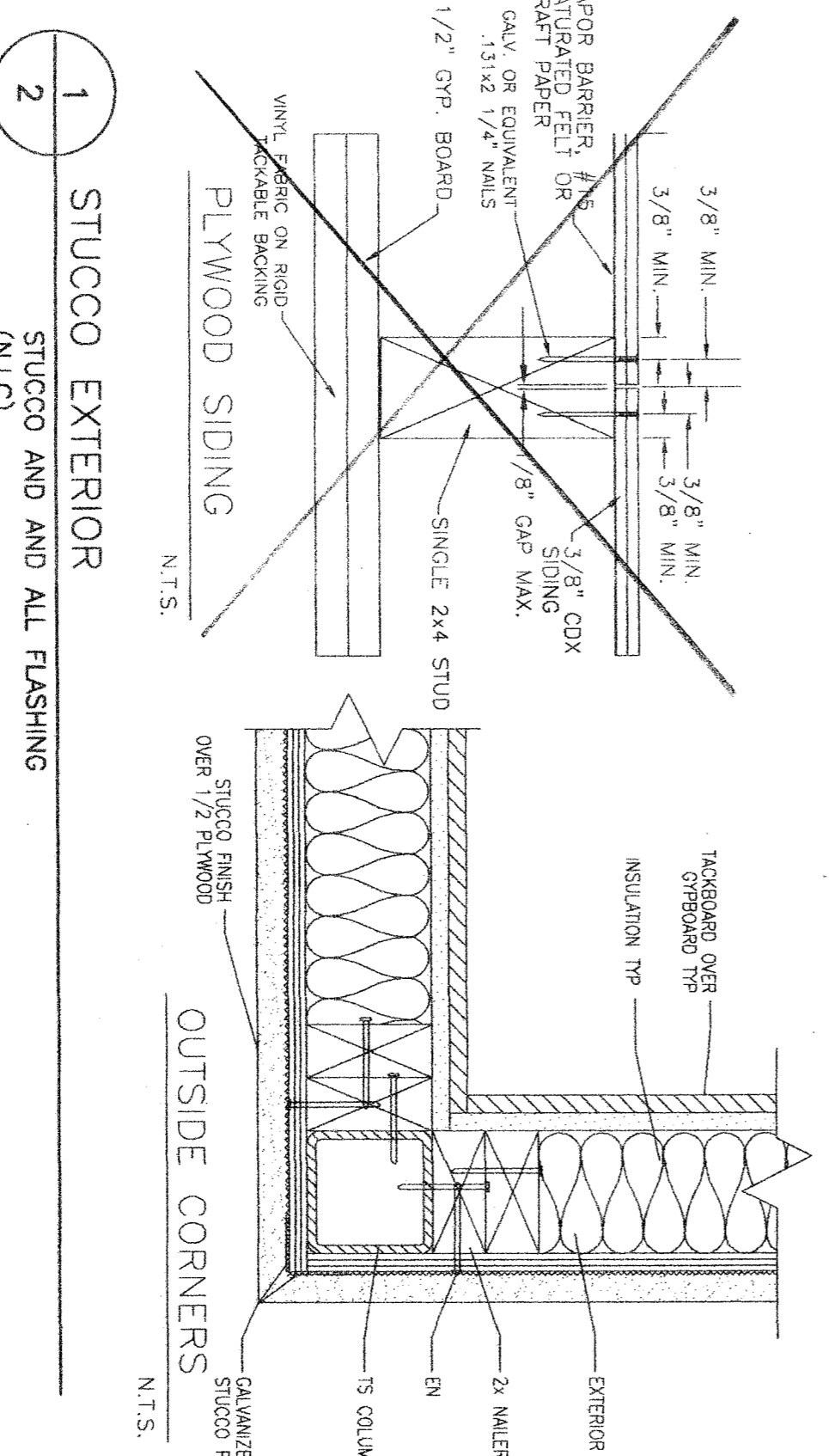
REAR ELEVATION
SCALE: 3/8" = 1'-0"



RIGHT SIDE ELEVATION
SCALE: 1/4" = 1'-0"

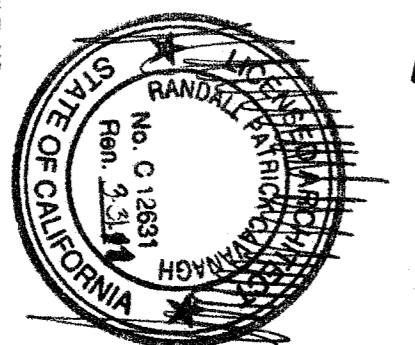


NOTE:
WHEN USING A CONCRETE FOUNDATION SYSTEM, THE ROOF SHALL BE MAINTAINED AT A MINIMUM OF 15" TO A MAXIMUM OF 18" CLEARANCE FROM THE ELECTRICAL SYSTEMS, VENTILATION AND UNDER FLOOR ACCESS TO THOSE SYSTEMS.

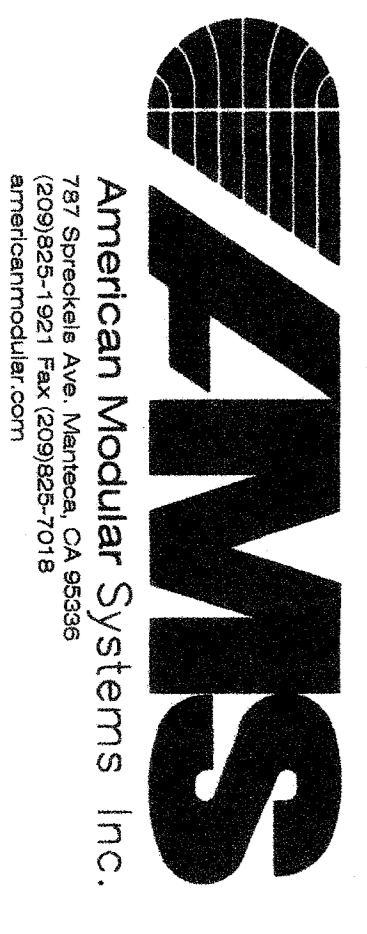


ROOM ID SIGNAGE SEE SHEET 4 DETAILS E/1 & I/1
NOTE: IDENTIFICATION SHALL BE PROVIDED FOR ROOMS OR SPACES BASED ON CONFORMANCE WITH THE FOLLOWING: 1/10 INCH ON CENTER IN EACH CELL WITH 5/16 INCH SPACE BETWEEN CELLS. DOTS SHALL BE RAISED A MINIMUM 1/40 INCH TO LATCH OUTSIDE OF DOOR WHERE THERE IS NO SPACE ON THE LATCH SIDE. SIGNAGE SHALL BE PLACED ON THE REARST ADVENENT ABOVE THE FINISH FLOOR TO THE CENTER OF THE SIGN.

IDENTIFICATION STAMP
DIN OF THE STATE ARCHITECT
APR 13 11 28 8 5
AC 3-20-2012
DATE



24 X 40 (ES)
RELOCATABLE
CLASSROOMS



CUSTOMER:
BAKERSFIELD CITY SCHOOL DISTRICT
CONCRETE FOUNDATION

EXTERIOR ELEVATIONS

DATE: 04/21/08
SCALE: NONE
DRAWN BY: RS/MP
CHECKED BY:
SERIAL NO.

NO.	DATE	DESCRIPTION	NO.	DATE	DESCRIPTION

PROJECT NO.
SHEET NO. 2