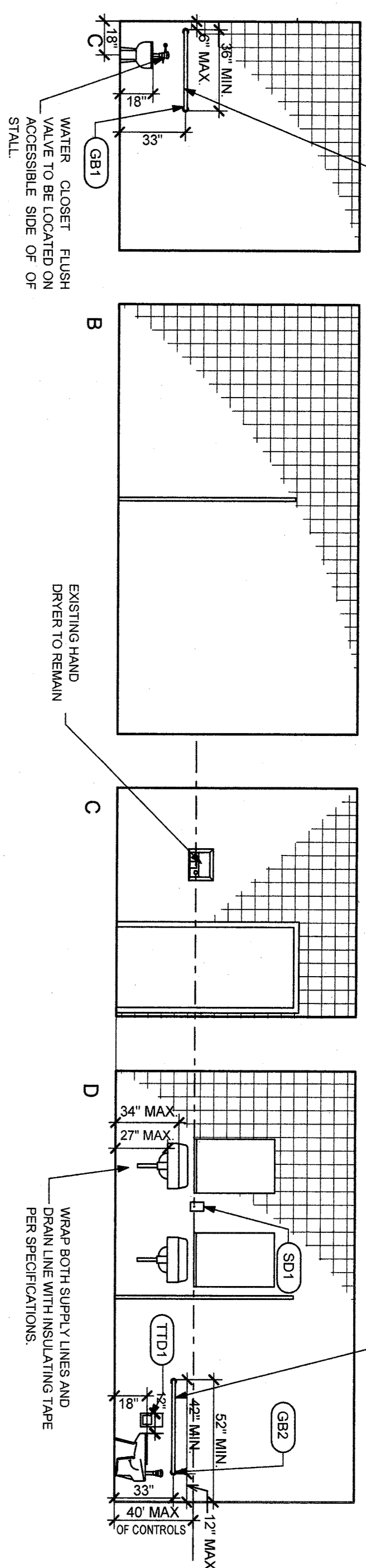
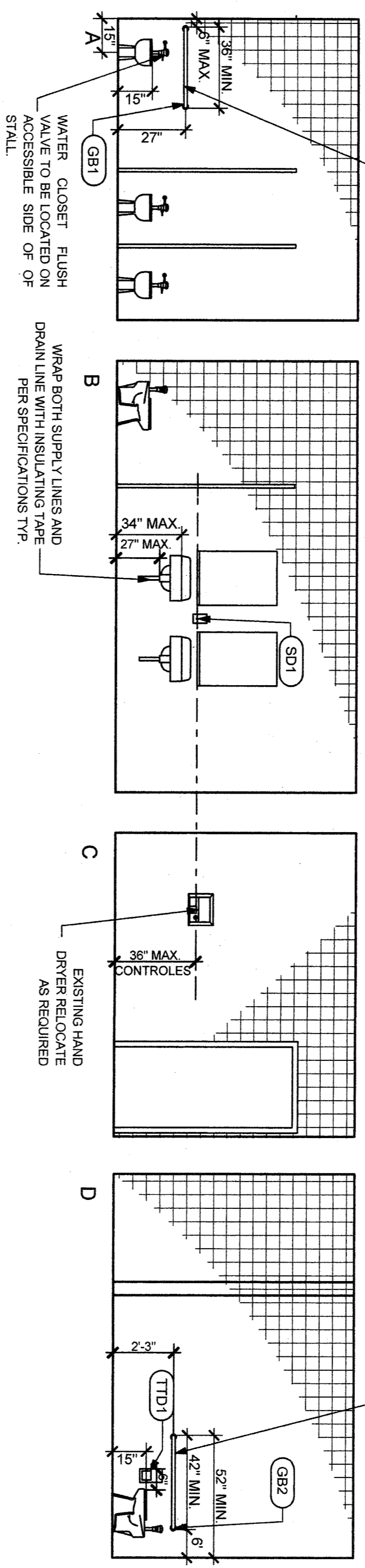


CONTRACTOR TO RELOCATE EXISTING PLUMBING FIXTURES AND TOILET ACCESSORIES AS SHOWN. CONTRACTOR IS REQUIRED TO RELOCATE PLUMBING LINES AS REQUIRED AND PATCH ALL SURFACES EFFECTED. PATCH MUST MATCH EXISTING CONDITIONS TO THE BEST ABILITY THAT THE EXISTING CONDITIONS AND TRADE WILL ALLOW TYPICAL.



D1 B-101 INTERIOR ELEVATIONS EXISTING WOMEN'S RESTROOM
SCALE: 1/4" = 1'-0"

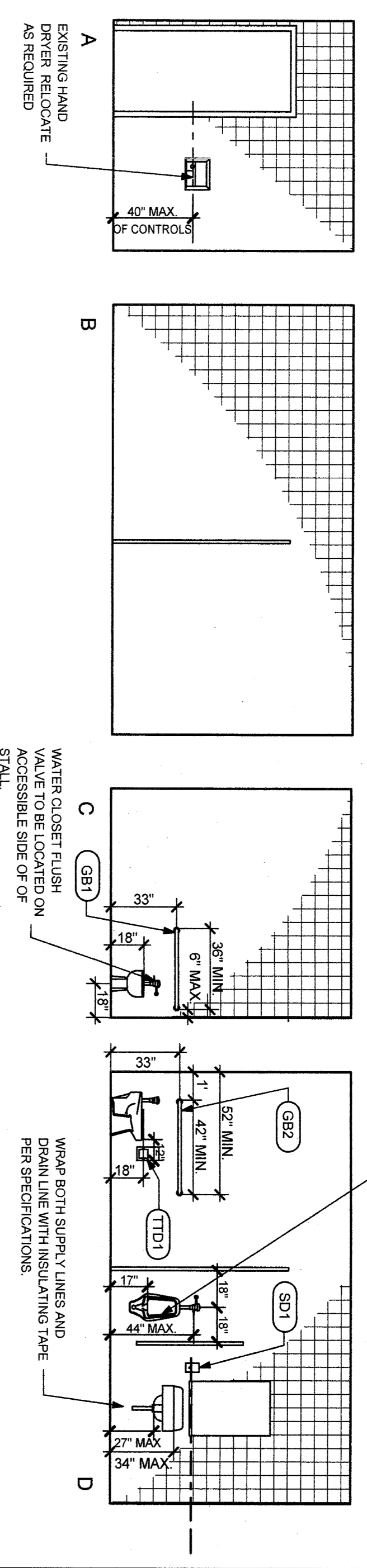
CONTRACTOR TO RELOCATE EXISTING PLUMBING FIXTURES AND TOILET ACCESSORIES AS SHOWN. CONTRACTOR IS REQUIRED TO RELOCATE PLUMBING LINES AS REQUIRED AND PATCH ALL SURFACES EFFECTED. PATCH MUST MATCH EXISTING CONDITIONS TO THE BEST ABILITY THAT THE EXISTING CONDITIONS AND TRADE WILL ALLOW TYPICAL.



C1 C-101 INTERIOR ELEVATIONS EXISTING GIRLS' RESTROOM
SCALE: 1/4" = 1'-0"

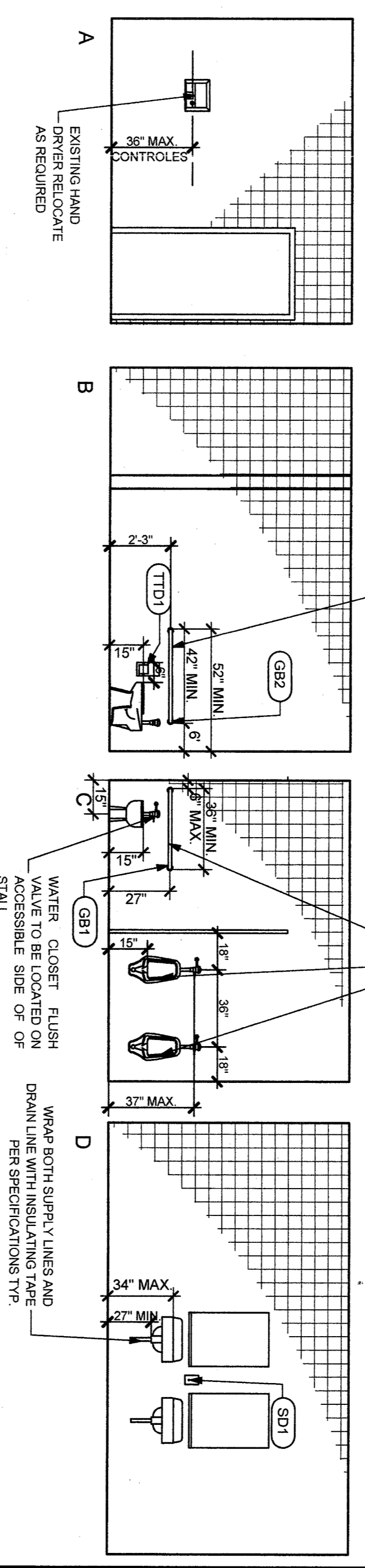
CONTRACTOR TO RELOCATE EXISTING PLUMBING FIXTURES AND TOILET ACCESSORIES AS SHOWN. CONTRACTOR IS REQUIRED TO RELOCATE PLUMBING LINES AS REQUIRED AND PATCH ALL SURFACES EFFECTED. PATCH MUST MATCH EXISTING CONDITIONS TO THE BEST ABILITY THAT THE EXISTING CONDITIONS AND TRADE WILL ALLOW TYPICAL.

CONTRACTOR TO RELOCATE EXISTING PLUMBING FIXTURES AND TOILET ACCESSORIES AS SHOWN. CONTRACTOR IS REQUIRED TO RELOCATE PLUMBING LINES AS REQUIRED AND PATCH ALL SURFACES EFFECTED. PATCH MUST MATCH EXISTING CONDITIONS TO THE BEST ABILITY THAT THE EXISTING CONDITIONS AND TRADE WILL ALLOW TYPICAL.



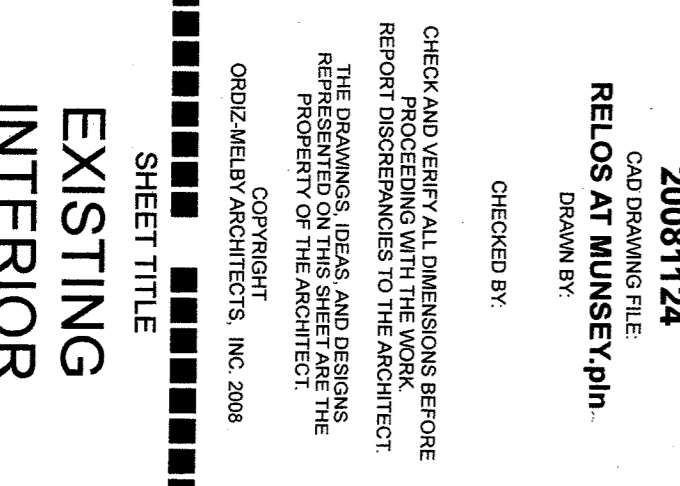
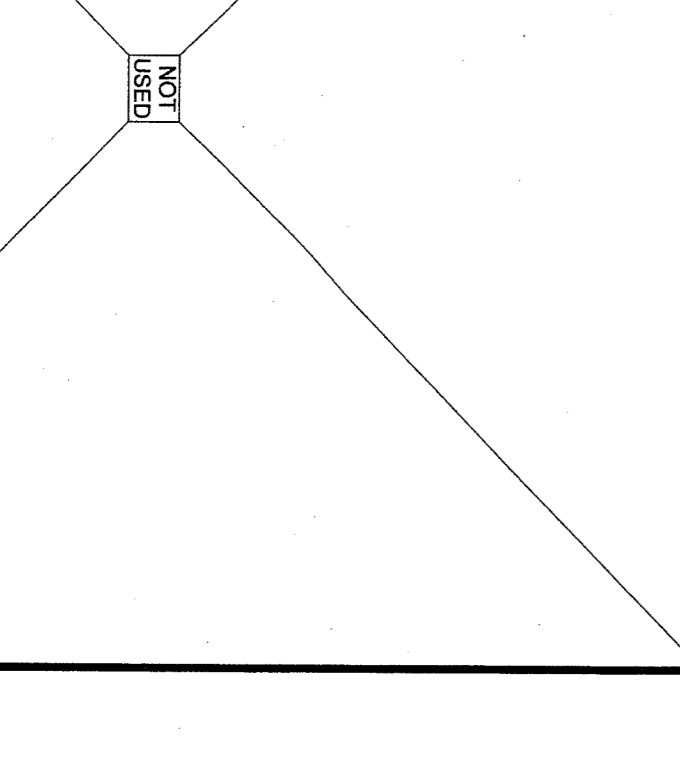
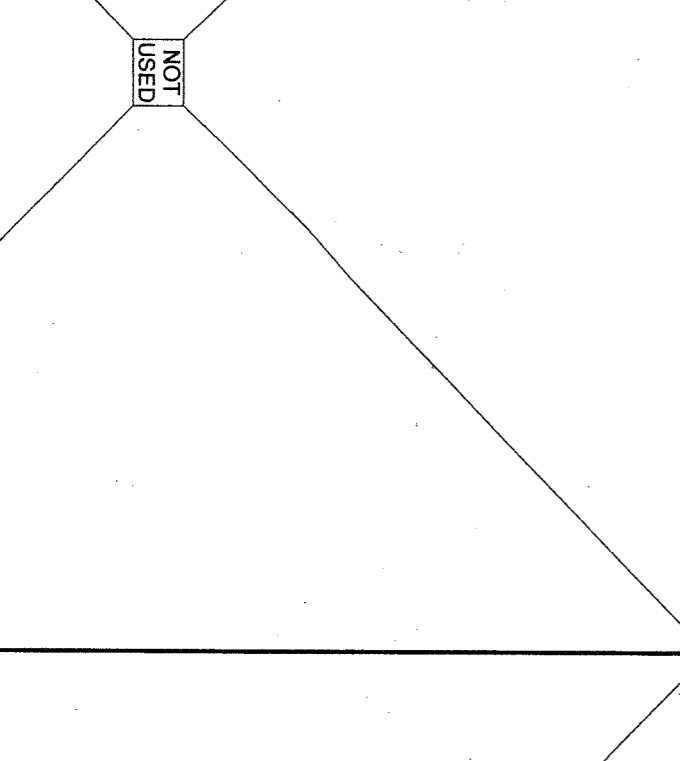
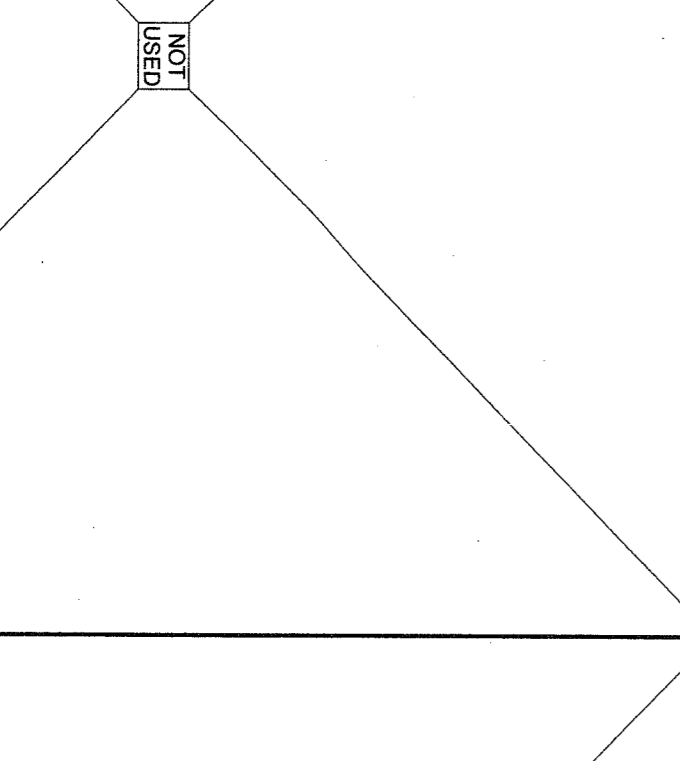
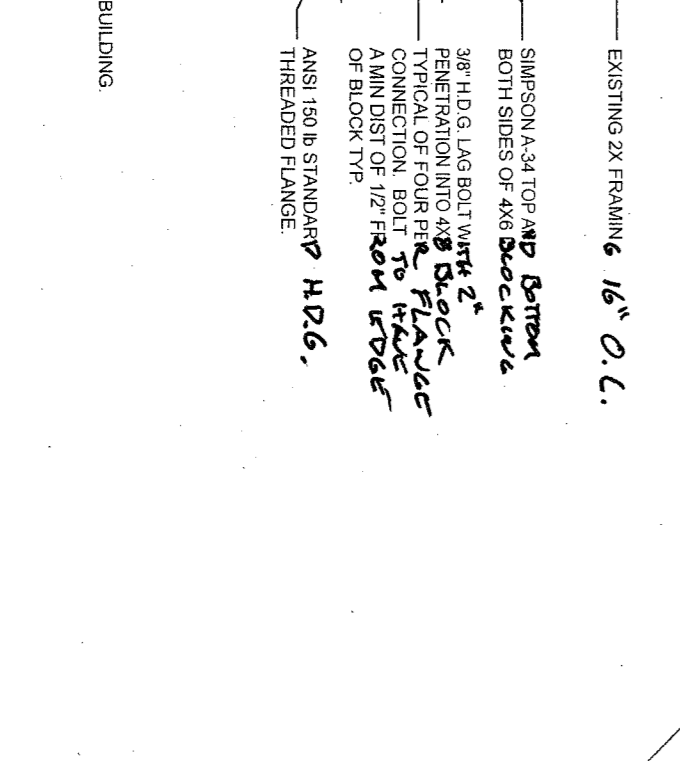
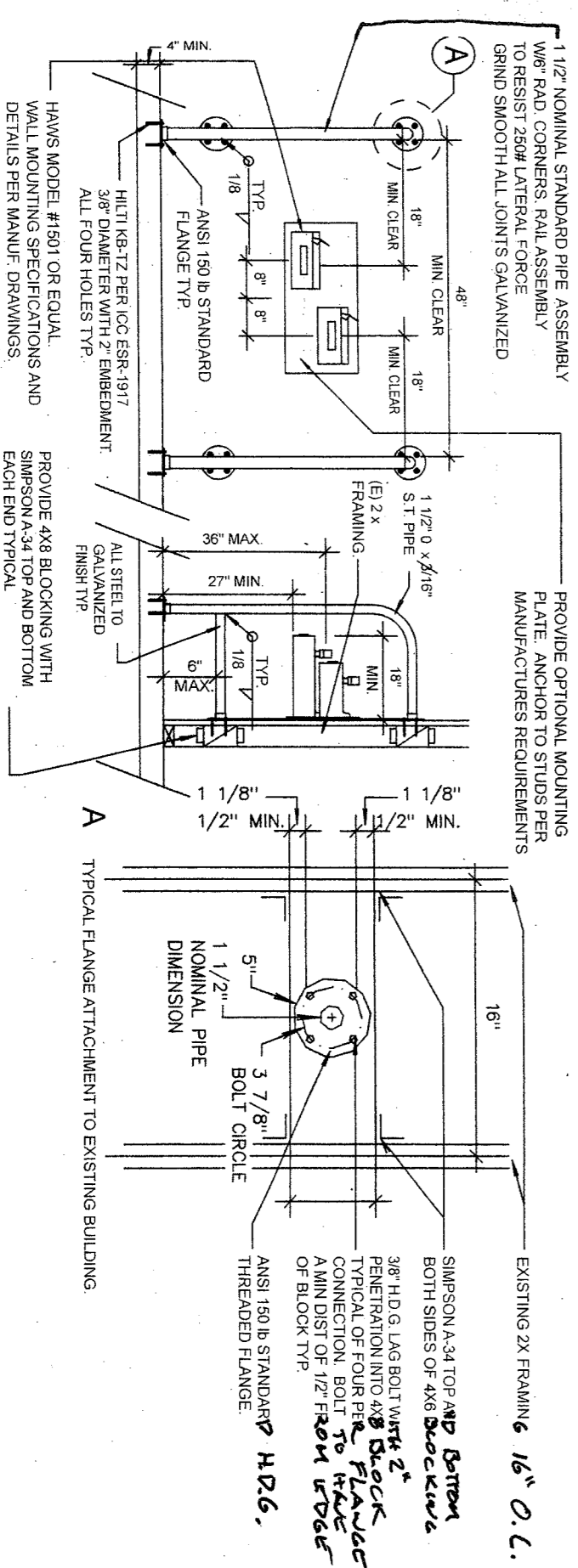
D3 B-102 INTERIOR ELEVATIONS EXISTING MEN'S ROOM
SCALE: 1/4" = 1'-0"

CONTRACTOR TO RELOCATE EXISTING PLUMBING FIXTURES AND TOILET ACCESSORIES AS SHOWN. CONTRACTOR IS REQUIRED TO RELOCATE PLUMBING LINES AS REQUIRED AND PATCH ALL SURFACES EFFECTED. PATCH MUST MATCH EXISTING CONDITIONS TO THE BEST ABILITY THAT THE EXISTING CONDITIONS AND TRADE WILL ALLOW TYPICAL.



C3 C-102 INTERIOR ELEVATIONS EXISTING BOY'S RESTROOM
SCALE: 1/4" = 1'-0"

CONTRACTOR TO RELOCATE EXISTING PLUMBING FIXTURES AND TOILET ACCESSORIES AS SHOWN. CONTRACTOR IS REQUIRED TO RELOCATE PLUMBING LINES AS REQUIRED AND PATCH ALL SURFACES EFFECTED. PATCH MUST MATCH EXISTING CONDITIONS TO THE BEST ABILITY THAT THE EXISTING CONDITIONS AND TRADE WILL ALLOW TYPICAL.



A1 H1-10 DRAWING FOUNDATION

CHECK AND VERIFY ALL DIMENSIONS BEFORE REPORT DISCREPANCIES TO THE ARCHITECT. THE DRAWINGS, IDEAS AND DESIGNS REPRESENTED ON THIS SHEET ARE THE PROPERTY OF ORIZ MELBY ARCHITECTS, INC. 2008.

ORIZ MELBY ARCHITECTS, INC.
5500 KING MENNE
BAKERSFIELD, CALIFORNIA 93309
TELEPHONE (861) 832-5288
FACSIMILE (861) 832-4291

ARCHITECTS, INC.
SUITE 200
93309
(861) 832-5288
(861) 832-4291

WILLIAM J. MELBY, AIA
ARCHITECT C-161833

IDENTIFICATION STAMP
DW. OF THE STATE ARCHITECT
APR 03 1 28 8 5
ARCHITECTS
DATE: 3-24-2010

(2) RELOCATABLE CLASSROOMS AT MUNSEY ELEMENTARY SCHOOL: 3801 BRAVE STREET BAKERSFIELD CA 93309

BAKERSFIELD CITY SCHOOL DISTRICT 1300 BAKER STREET BAKERSFIELD, CALIFORNIA 93305

MARK	DATE	DESCRIPTION

JOB NUMBER: 20081124
CAD DRAWING FILE: RELOS AT MUNSEY.plt
DRAWN BY:
CHECKED BY:
SHEET TITLE: EXISTING INTERIOR ELEVATIONS AND TYPICAL DETAILS
SHEET IDENTIFICATION NUMBER: A-113
SHEET 5 OF 4