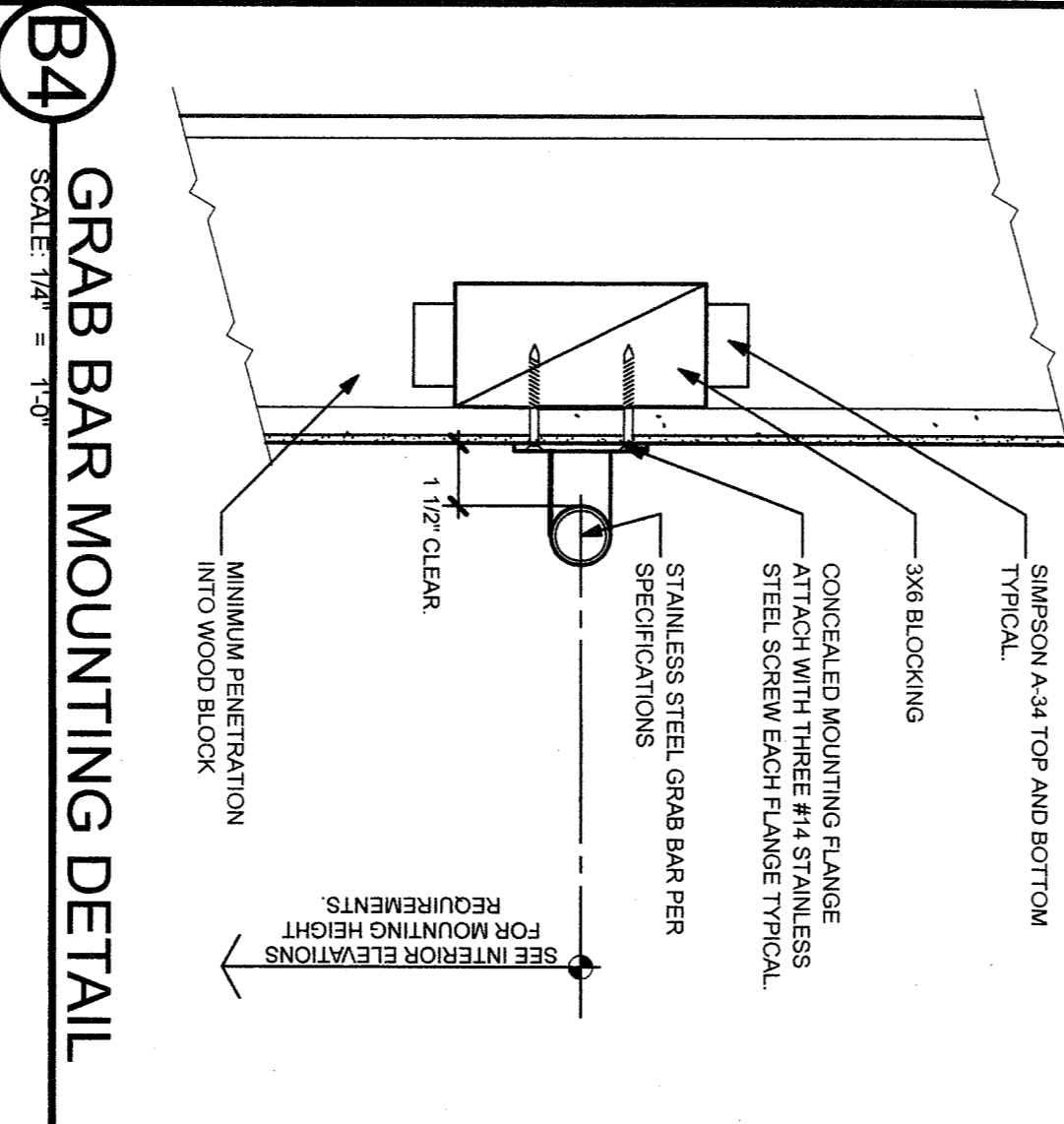
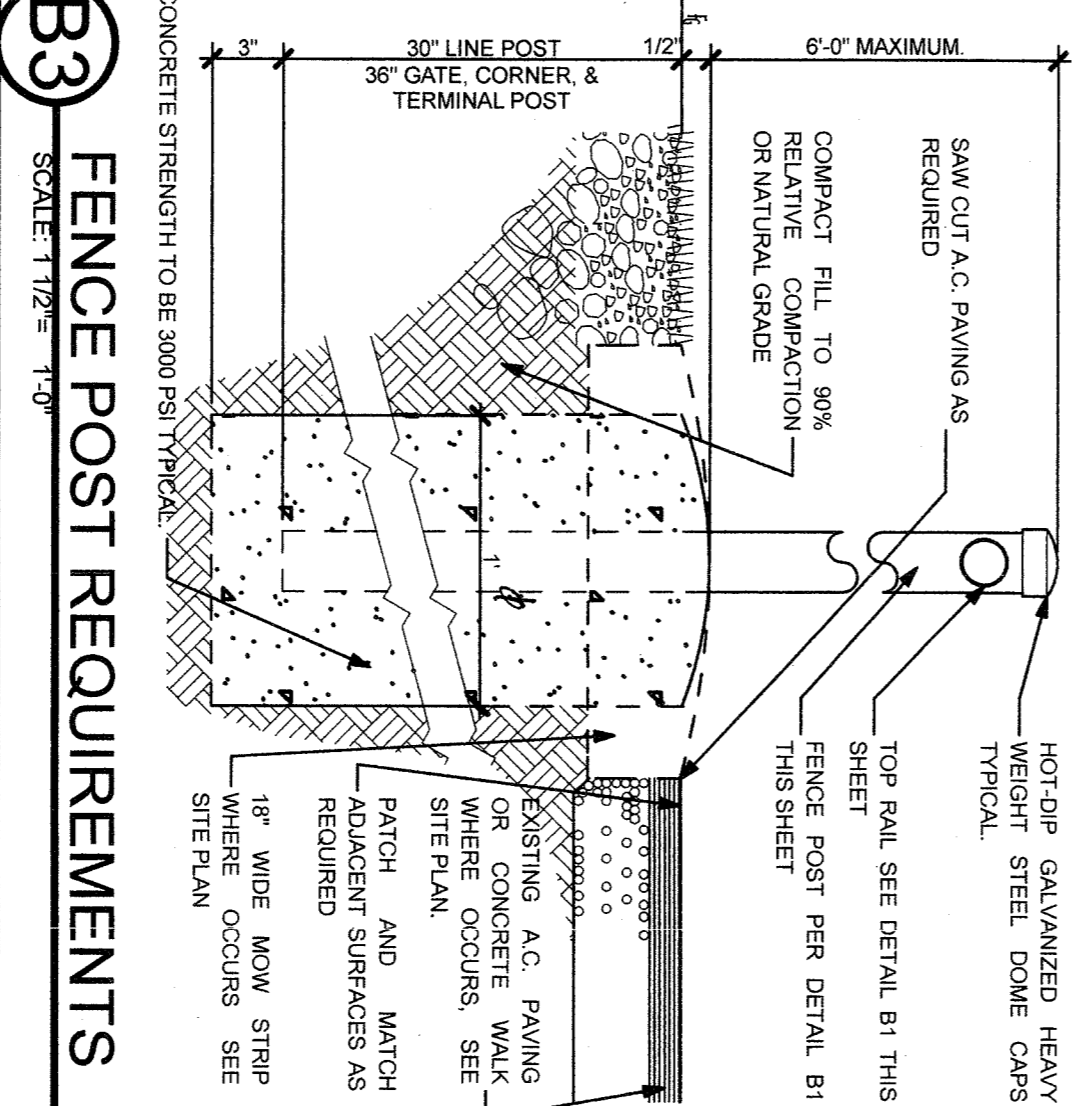
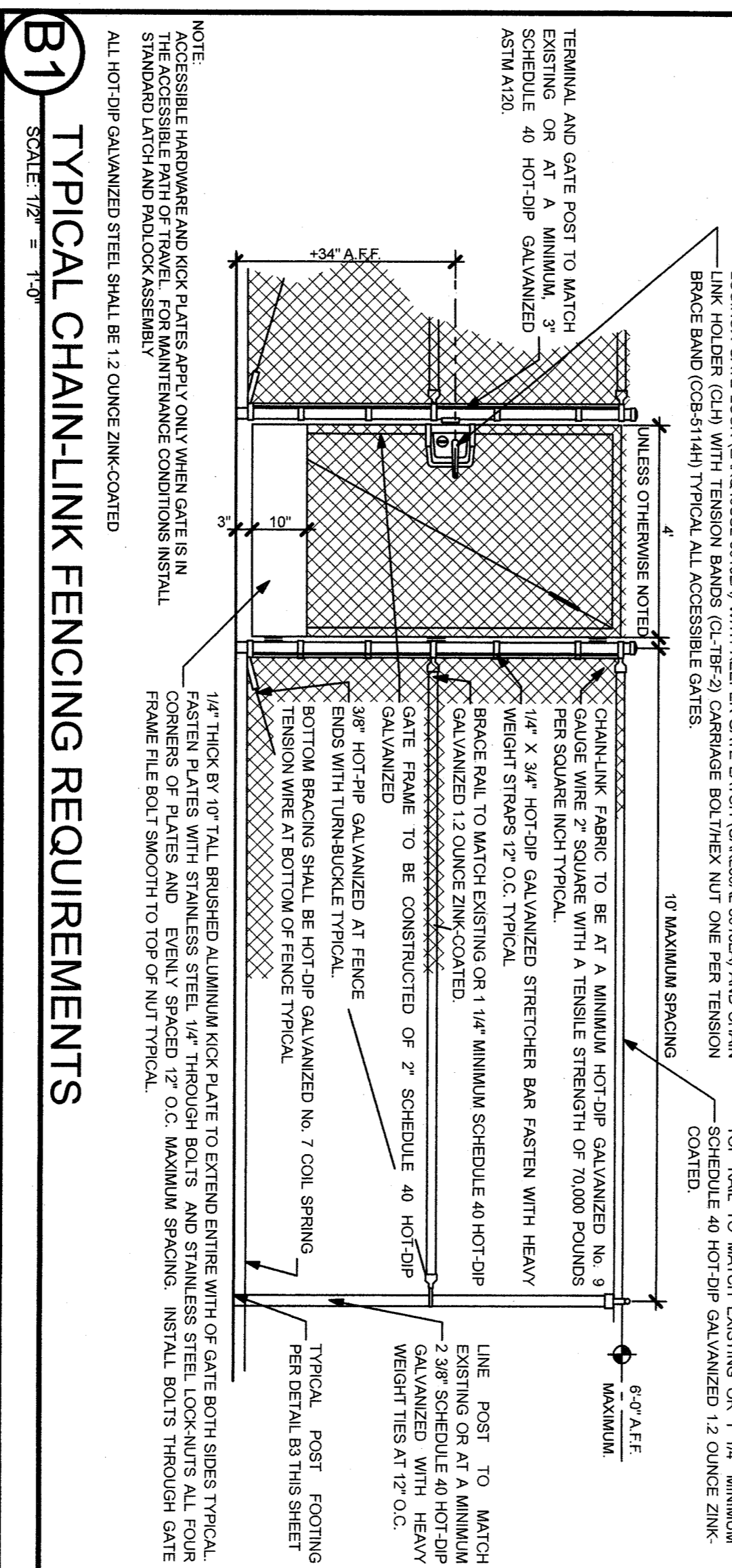
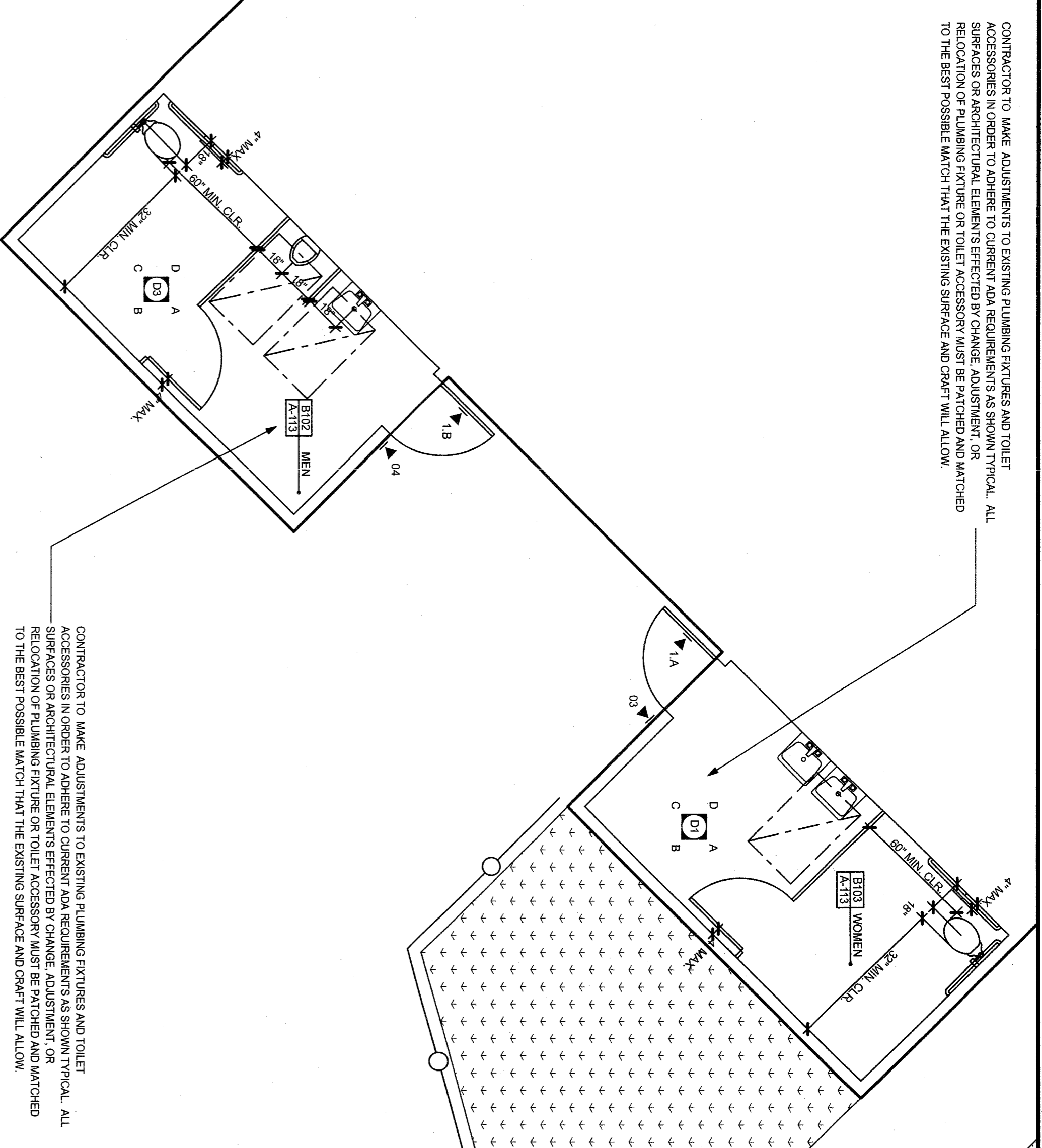


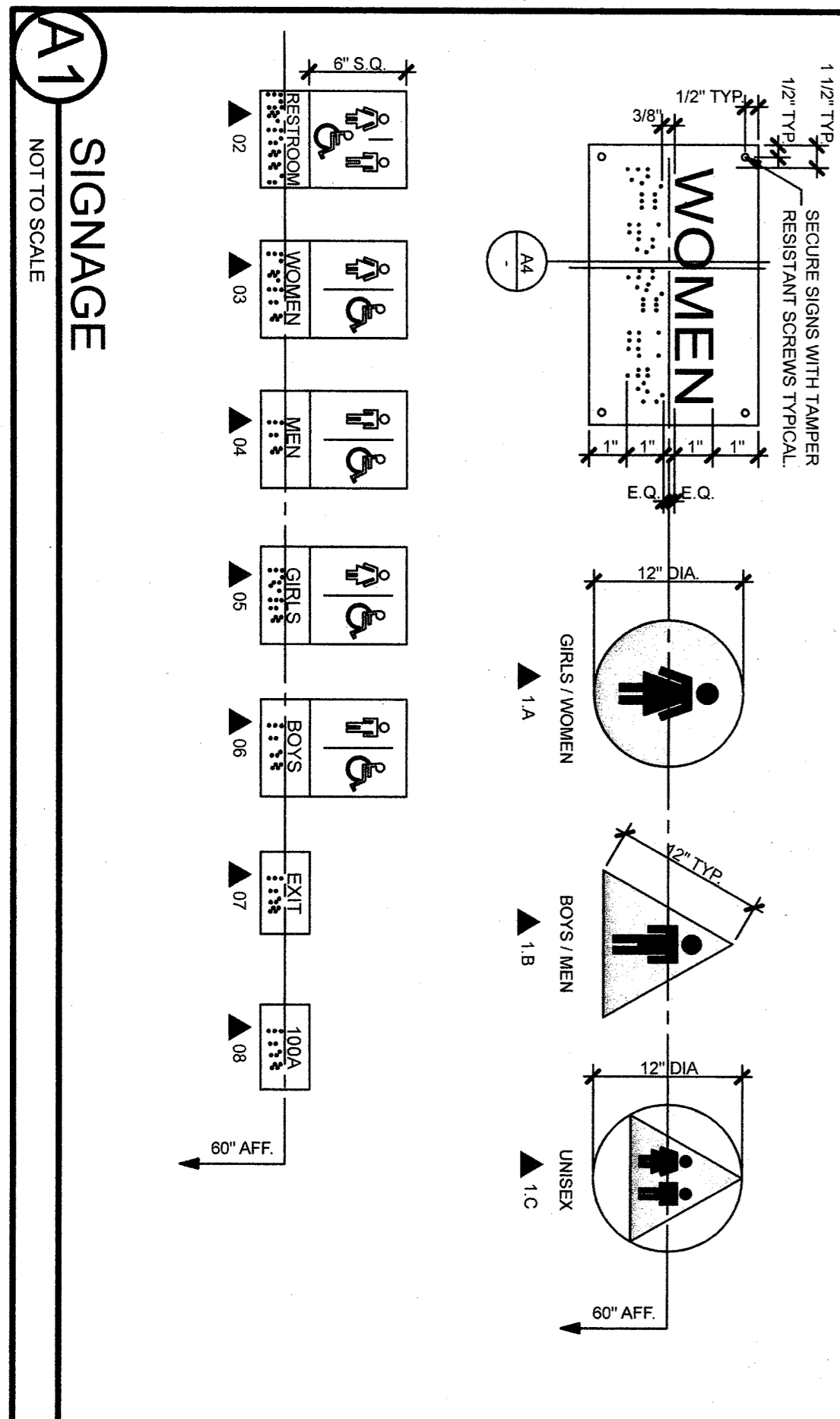
C1 PARTIAL FLOOR PLAN UNIT C EXISTING BOYS AND GIRL'S RESTROOM
SCALE: 1/4" = 1'-0"

C3 PARTIAL FLOOR PLAN UNIT B EXISTING MEN AND WOMEN RESTROOM
SCALE: 1/4" = 1'-0"

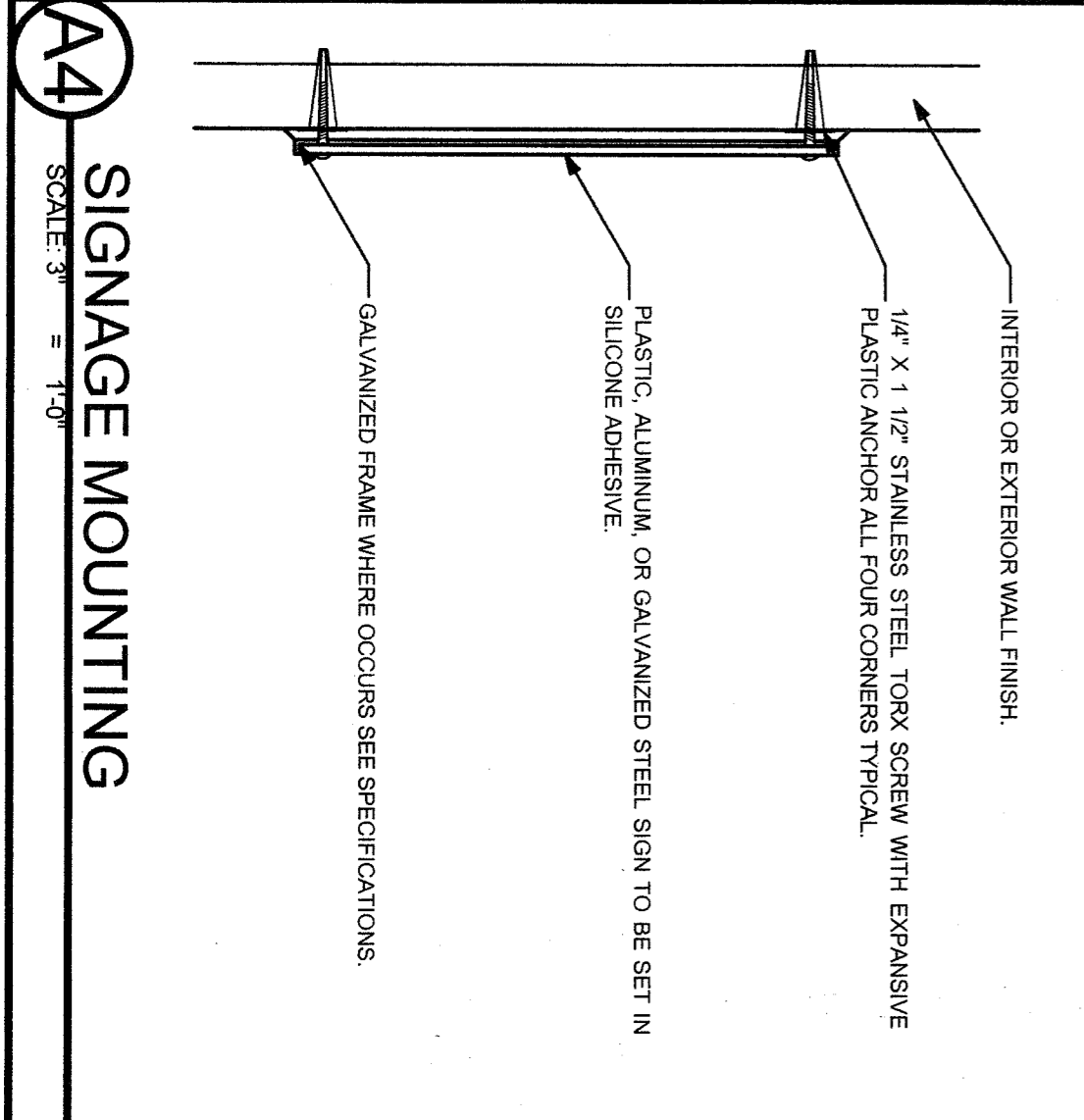


SYMBOL LEGEND

- EXISTING TURF TO REMAIN
- EXISTING AC PAVING
- RESTROOMS TO BE MODERNIZED PER THIS APPLICATION
- EXISTING CONCRETE WALK
- NEW CONCRETE WALK
- PROPOSED RELOCATABLE CLASSROOMS
- ACCESSIBLE PATH OF TRAVEL
- SECTION LOCATION ON SHEET
- DETAIL LOCATION ON SHEET
- INTERIOR ELEVATION LOCATION ON SHEET
- ROOM NAME AND NUMBER
- INTERIOR ELEVATION SHEET NUMBER



- NOTES:**
- BORDERLESS GEOMETRIC SYMBOL DOOR SIGNS FOR RESTROOMS MUST CONTRAST IN COLOR WITH DOOR BY 70% MIN. DARK ON LIGHT OR LIGHT ON DARK.
 - BORDERLESS GEOMETRIC SYMBOLS ON RESTROOM SIGNS ARE TO BE PLACED ABOVE RAISED CHARACTERS AND BRAILLE ON TACTILE SIGN.
 - BORDERLESS INTERNATIONAL SYMBOL OF ACCESSIBILITY IS TO BE WHITE ON FEDERAL BLUE BACKGROUND WITH A NON-GLARE FINISH MAINTAINING A POSITIVE CONTRAST IN COLOR WITH DOOR BY 70% MIN.
 - BORDERLESS UNISEX DOOR SIGNS TRIANGLE MUST CONTRAST WITH DOOR BY 70% MINIMUM.
 - CONTRAST BETWEEN CHARACTERS AND BACKGROUND MUST BE 70% MINIMUM ON ALL TACTILE SIGNAGE.
 - SIGNS 1A, 1B, & 1C ARE TO BE MOUNTED ON WALL AT 60" ABOVE FINISH FLOOR TO CENTRALISE BETWEEN TEXT AND BRAILLE AS SHOWN ON STRIKE SIDE OF THE DOOR. EDGE OF SIGN MUST BE WITHIN 4" & 12" OF DOOR JAMB. TACTILE SIGN (9) MUST COORDINATE WITH ROOM NUMBERS DESIGNATED BY DISTRICT. TYPICAL.
 - BRAILLE SYMBOLS SHALL BE CORRESPONDING CONTRACTED GRADE II BRAILLE AT 4. DOTS WITH DOMES PER SQUARE INCH.
 - BRAILLE DOTS WITH DOMES SHALL BE 1/16" O.C. IN EACH CELL WITH 1/16" SPACING BETWEEN CELLS. DOTS WITH DOMES SHALL BE RAISED MINIMUM OF 1/64" ABOVE THE BACKGROUND. CFC 11178.5.6
 - ALL SIGNAGE MUST CONFORM TO CALIFORNIA TITLE 24 REGULATIONS. 1003.2.8 & 11178.5.



TOILET ACCESSORY LEGEND

- 36" GRAB BAR, BOBRICK, MODEL # B-5807/38
- 42" GRAB BAR, BOBRICK, MODEL # B-5807/42
- SOAP DISPENSER, BOBRICK, MODEL # B-155
- TOILET TISSUE DISPENSER, BOBRICK, MODEL # B-3888

ACCESSIBLE CLEARANCE LEGEND

NOTE: ALL DIMENSIONS ARE CLEARANCE TO FINISH MATERIALS

ORDIZ MELBY ARCHITECTS, INC.
5500 NING AVENUE SUITE 280
BAKERSFIELD, CALIFORNIA 93309
TELEPHONE (861) 832-5298
FACSIMILE (861) 832-4291

IDENTIFICATION STAMP
DW. OF THE STATE ARCHITECT
APR 03 11 28 85
AC LUIS H. CASTRO
DNE 2-24-2012

(2) RELOCATABLE CLASSROOMS AT
MUNSEY ELEMENTARY SCHOOL:
3801 BRAVE STREET
BAKERSFIELD CA 93309

BAKERSFIELD CITY SCHOOL DISTRICT
1300 BAKER STREET
BAKERSFIELD, CALIFORNIA 93305

20081124
COURTESY FILE
RELOS AT MUNSEY.pjn
DRAWN BY

CHECKED BY
CHECK AND VERIFY ALL DIMENSIONS BEFORE PROCEEDING WITH THE WORK.
THE DRAWINGS, IDEAS AND RESPONSES ARE THE PROPERTY OF THE ARCHITECT.
COPYRIGHT © 2008 BY ORDIZ MELBY ARCHITECTS, INC. 2008

SHEET TITLE
PARTIAL SITE PLAN AND FLOOR PLANS EXISTING RESTROOMS
SHEET IDENTIFICATION NUMBER
A-112
SHEET 4 OF 4