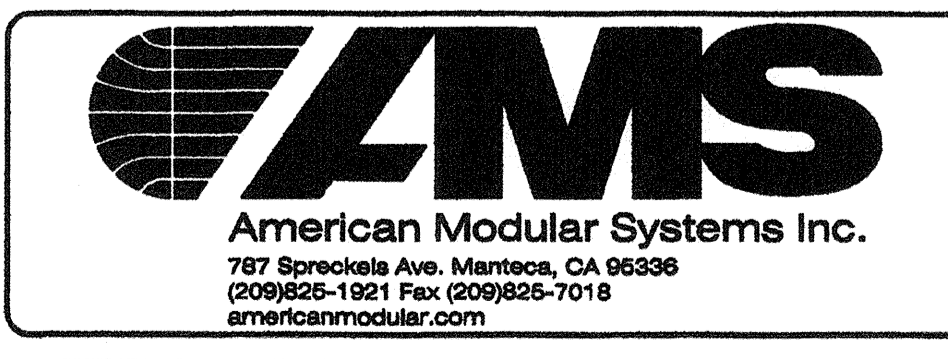


REVISIONS		
NO.	DATE	DESCRIPTION

DATE: 01/23/09
 SCALE: NOTED
 DRAWN BY: RL
 SERIAL NO.:

CUSTOMER:
 2:12 PITCHED ROOF 24' x 40' THRU 120' x 40' RELOCATABLE BUILDINGS
 CONCRETE FOOTING DETAILS



APPROVALS:
 THESE DRAWINGS ARE PRELIMINARY AND NOT FOR CONSTRUCTION UNLESS STAMPED & SIGNED BY THE ENGINEER OF RECORD.

REGISTERED PROFESSIONAL ENGINEER
 Kenneth A. Luttrell
 No. 1418
 Exp. 3/31/09
 Structural Engineer
 STATE OF CALIFORNIA

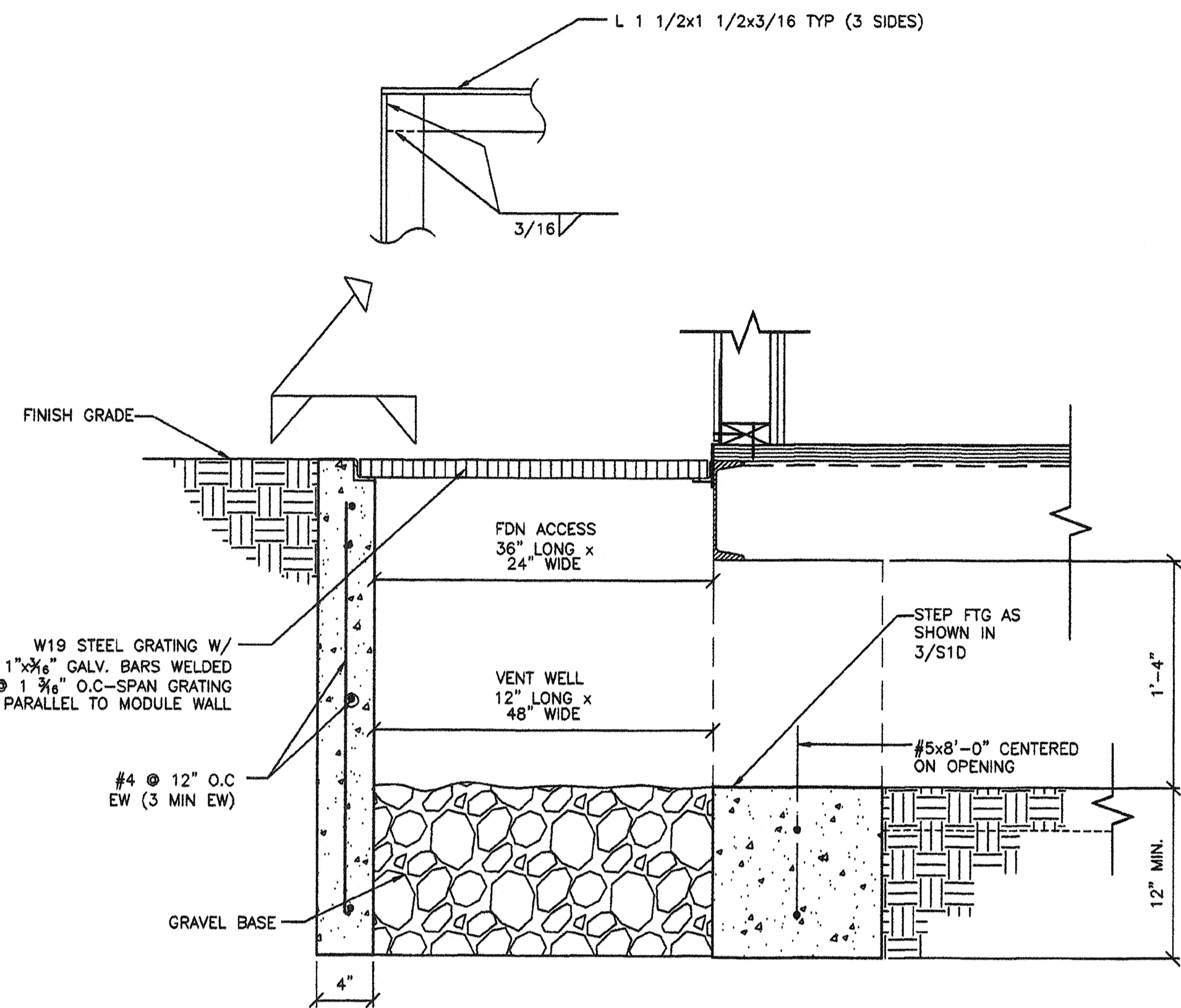
REGISTERED ARCHITECT
 PATRICK D. BROWN
 No. C12831
 Ren. 2/31/07
 STATE OF CALIFORNIA

IDENTIFICATION STAMP
 DIV. OF THE STATE ARCHITECT
 65-112985
 AC FLS SS
 DATE: 3/23/2009

IDENTIFICATION STAMP
 DIV. OF THE STATE ARCHITECT
 OFFICE OF REGULATION SERVICES
 PC 02-109695
 AC FLS SS
 DATE: 3/23/2009

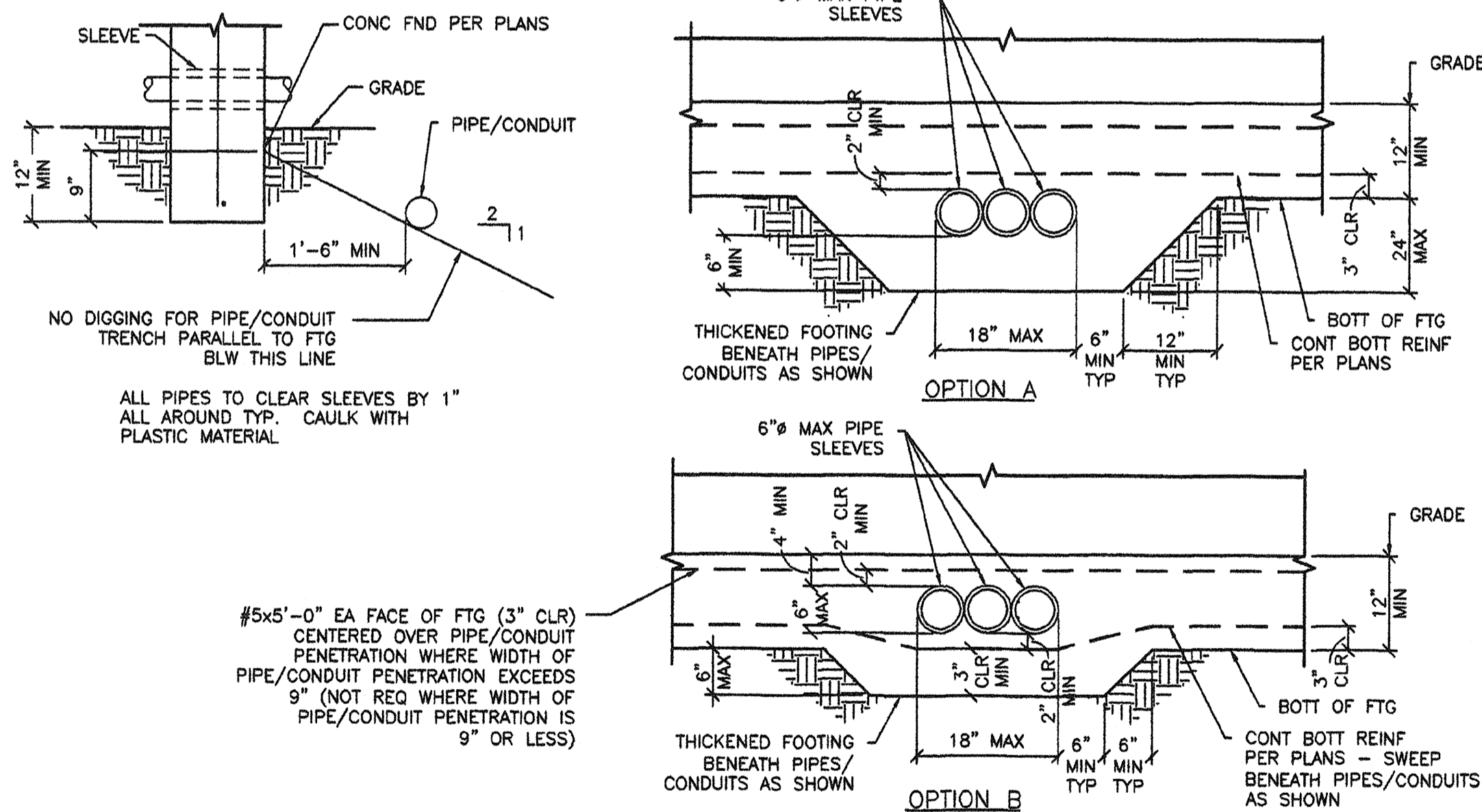
PROJECT No.
S1C

THESE DRAWINGS AND SPECIFICATIONS ARE THE PROPERTY OF AMERICAN MODULAR SYSTEMS AND ARE NOT TO BE REPRODUCED, CHANGED OR COPIED IN ANY FORM OR MANNER, NOR ARE THEY TO BE ASSIGNED TO ANY THIRD PARTY WITHOUT THE WRITTEN AUTHORIZATION OF AMERICAN MODULAR SYSTEMS.

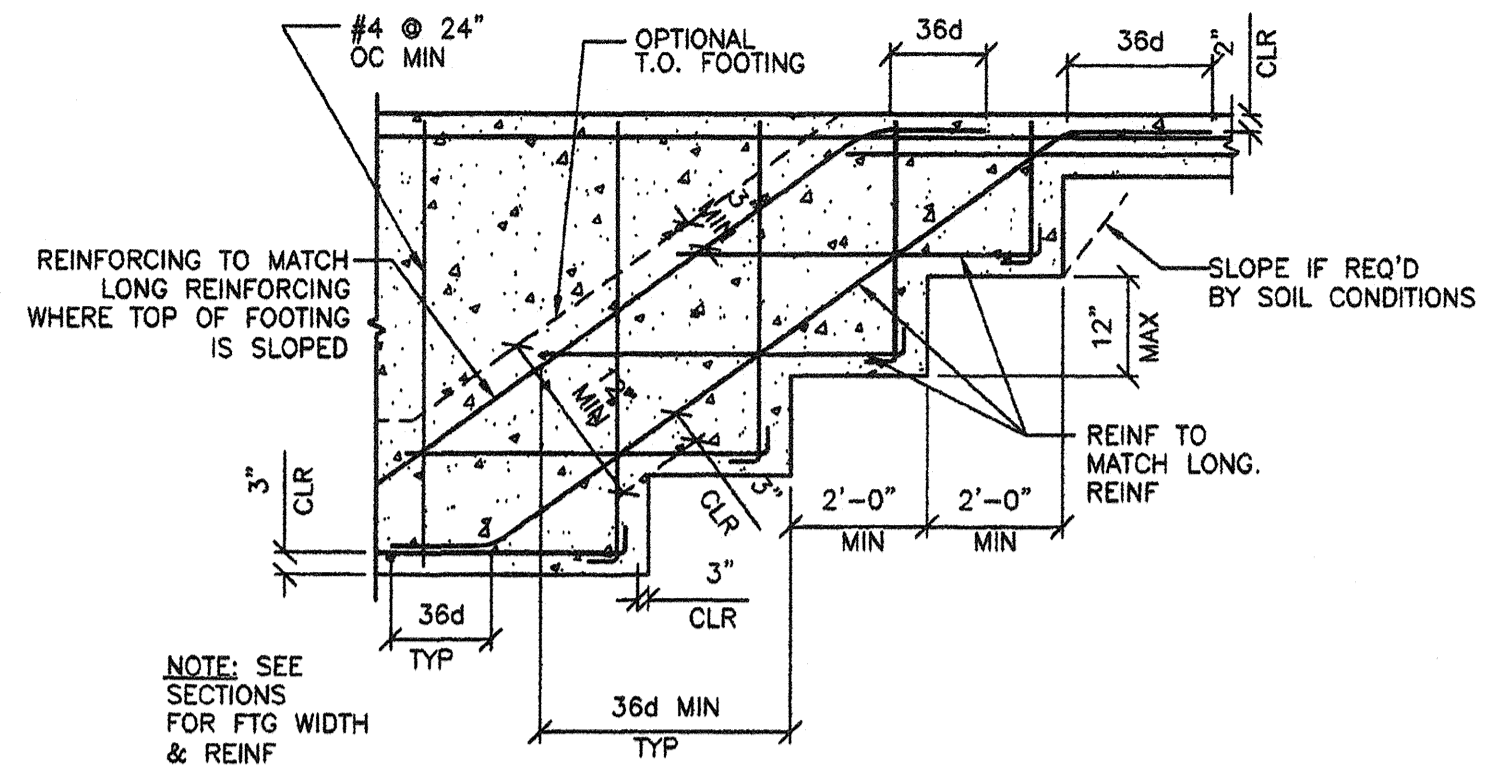


1 OPTIONAL FOUNDATION ACCESS/VENT WELL
S1D 1 1/2"-1'-0"

- NOTES:
- AS AN OPTION TO INDIVIDUAL PIPE SLEEVES THE FOOTING MAY BE BLOCKED OUT FOR MULTIPLE PIPES (8" HIGH x 18" WIDE MAX @ OPTION "A", 6" HIGH x 18" WIDE MAX OPTION "B") PROVIDE 1" MIN CLEARANCE ALL AROUND BTWN PIPES/CONDUITS & BLOCKOUT/SLEEVES & FILL W/ CAULK.
 - CONCRETE SHALL BE WELL CONSOLIDATED AROUND & UNDER PIPES, CONDUITS, SLEEVES, BLOCKOUTS TO PREVENT CONCRETE VOIDS.
 - PROVIDE 2" CLEAR MIN BETWEEN BLOCKOUT/SLEEVES AND REINFORCEMENT.
 - WHERE TOP OF PIPES/CONDUITS ARE 12" OR MORE BELOW THE BOTTOM OF THE FOOTING, THICKENED FOOTING AROUND PIPES/CONDUITS IS NOT REQUIRED. BACKFILL & COMPACT TO 95% OVER PIPES/CONDUITS PRIOR TO PLACING FOOTING.



2 PIPE SLEEVE DETAIL
S1D 1 1/2"-1'-0"



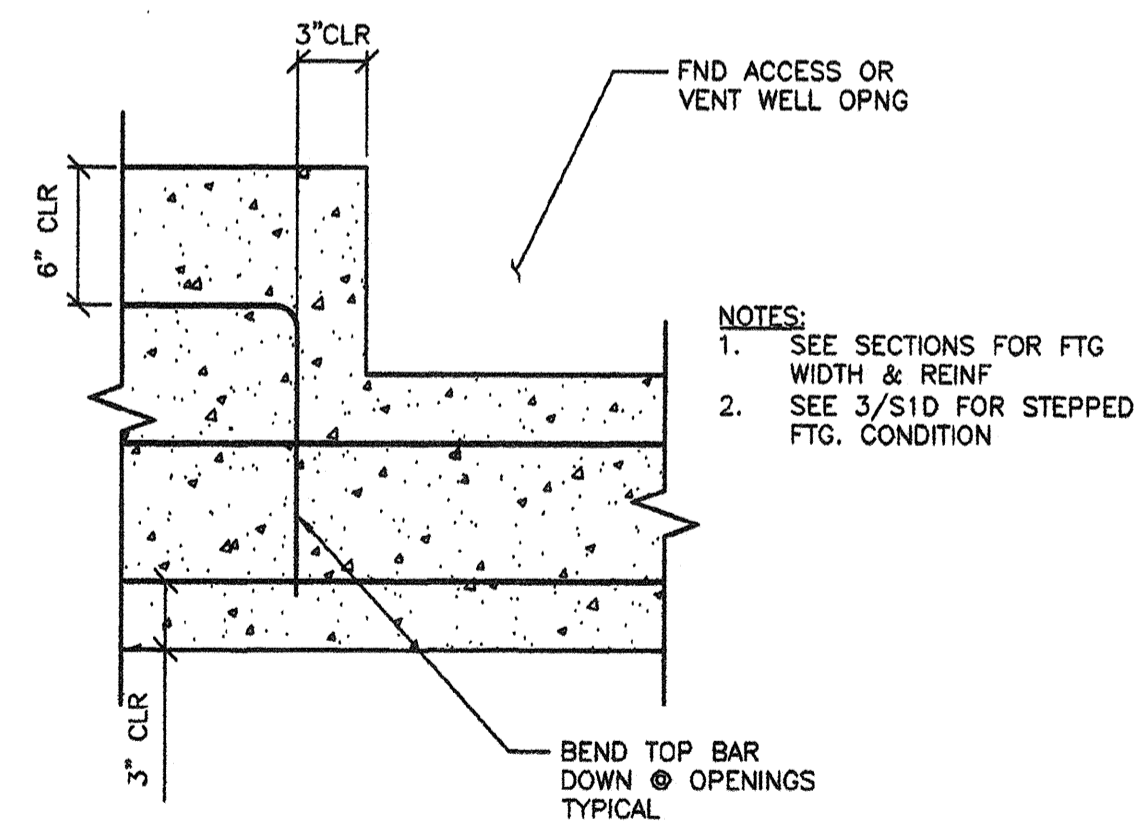
3 TYPICAL STEPPED FOOTING
S1D N.T.S.

CONCRETE ANCHOR SCHEDULE		
FLOOR LOAD	SUBFLOOR	ANCHOR SIZE
50	WOOD	1/2"
50 + 15	WOOD	1/2"
100	WOOD	1/2"
100	CONCRETE	3/4"
150	WOOD	5/8"
150	CONCRETE	3/4" SIMPSON STRONG BOLT REFER TO 4/S1D

ANCHOR TYPE	HILTI KWIK KB-TZ ICC ESR-1917			SIMPSON STRONG-BOLT ICC ESR-1771		
	1/2"	5/8"	3/4"	1/2"	5/8"	3/4"
ANCHOR SIZE (IN)	1/2"	5/8"	3/4"	1/2"	5/8"	3/4"
MIN EMBED (IN)	4"	4 3/4"	5 3/4"	3 7/8"	5 1/8"	5 3/4"
TENSION TEST LBS (SINGLE BOLT)	5121#	7395#	7456#	3826#	6378#	5150#
TENSION TEST LBS (DOUBLE BOLT)	5121#	6174#	5889#	3826#	5102#	4122#
INSTALLATION TORQUE (FT-LB)	40	60	110	50	85	180

- TENSION TEST = 2 x ALLOWABLE TENSION LOAD PER DSA IR 19-1.
- NORMAL WEIGHT CONCRETE WITH $f'_c = 2500$ PSI TO COMPLY WITH 1918A.4 FOR MATERIAL TEST WAIVER.
- MINIMUM EDGE DISTANCE REQUIRED 4 5/8"

4 ANCHOR BOLT SCHEDULE
S1D N.T.S.



5 VENT/ACCESS VENT OPENING DETAIL
S1D 1 1/2"-1'-0"

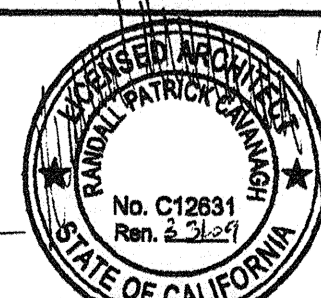
REVISIONS		
NO	DATE	DESCRIPTION

DATE: 11/19/2007
SCALE: NOTED
DRAWN BY: RL
SERIAL NO.:

CUSTOMER:
2:12 PITCHED ROOF 24' x 40' THRU 120' x 40' RELOCATABLE BUILDINGS
CONCRETE FOOTING DETAILS



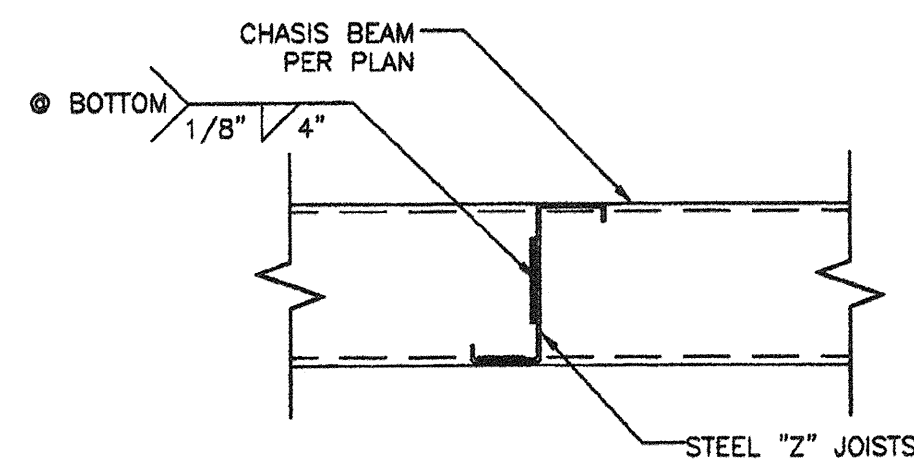
APPROVALS:
THESE DRAWINGS ARE PRELIMINARY AND NOT FOR CONSTRUCTION UNLESS STAMPED & SIGNED BY THE ENGINEER OF RECORD.
Kenneth A. Lutzal
No. 1418
EXP. 3-31-09
Structural Engineer
STATE OF CALIFORNIA



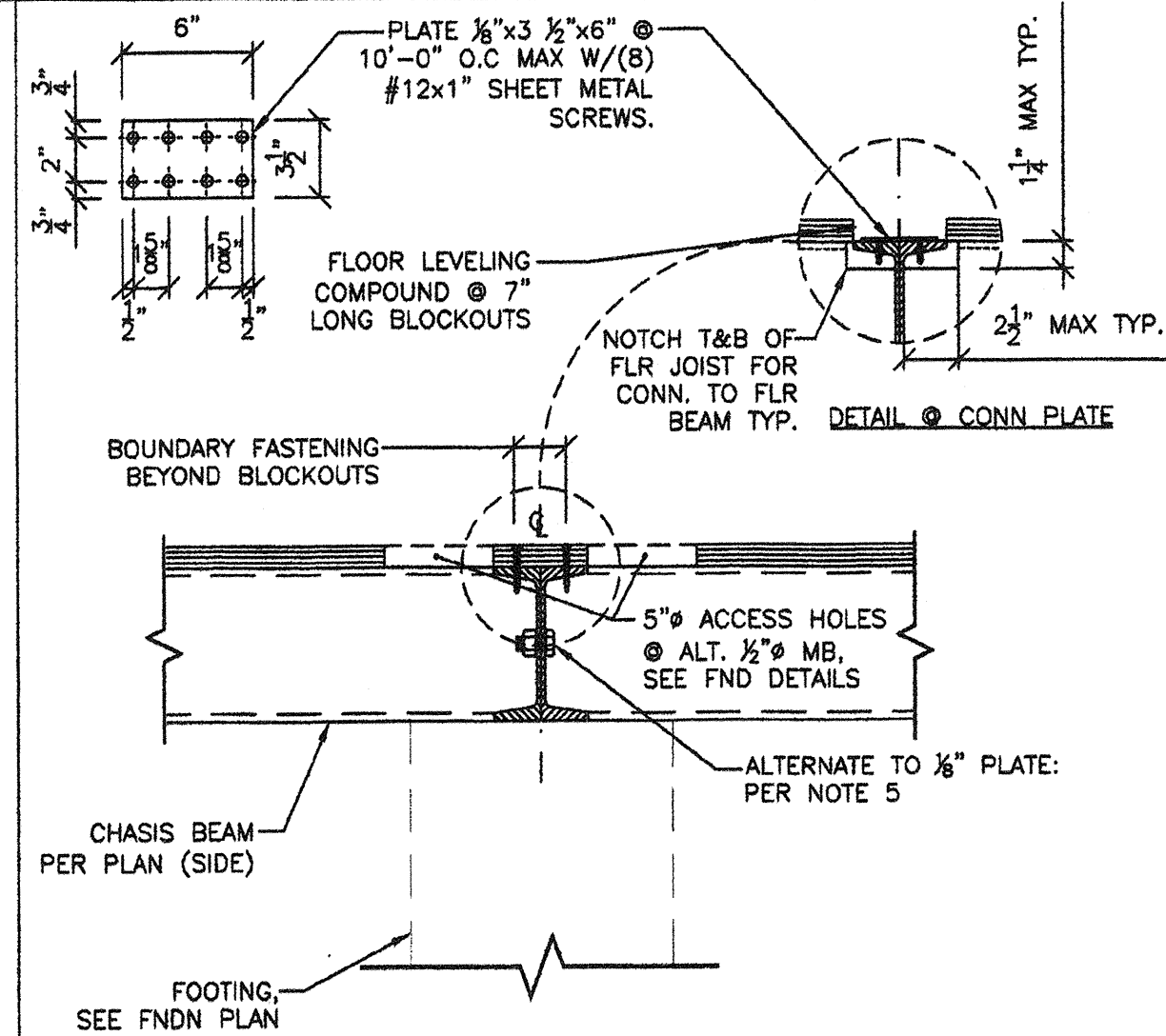
IDENTIFICATION STAMP
DIV. OF THE STATE ARCHITECT
OFFICE OF REGULATION SERVICES
PC 02-109695
AC FLS SS
DATE 3/23/2009

PROJECT No.
S1D

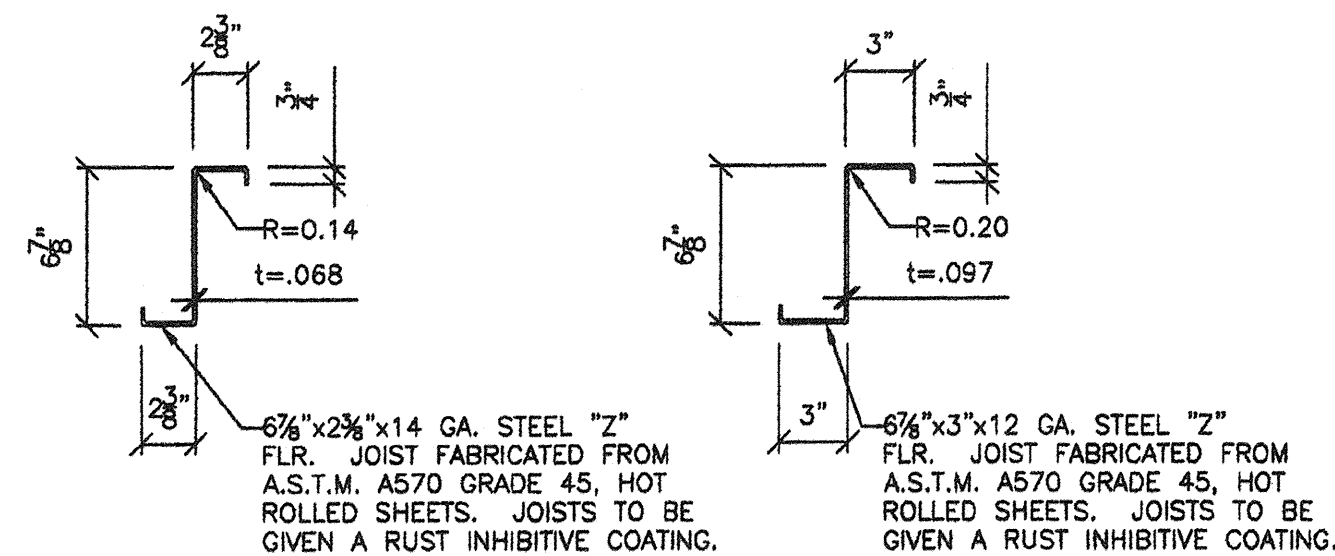
TYP FLOOR JOIST COPING



1 TYP JOIST ATTACHMENT TO BEAM
S2 1 1/2"=1'-0"



3 TYP. BEAM TO BEAM CONNECTION
S2 1 1/2"=1'-0"



14 GA. JOIST

12 GA. JOIST

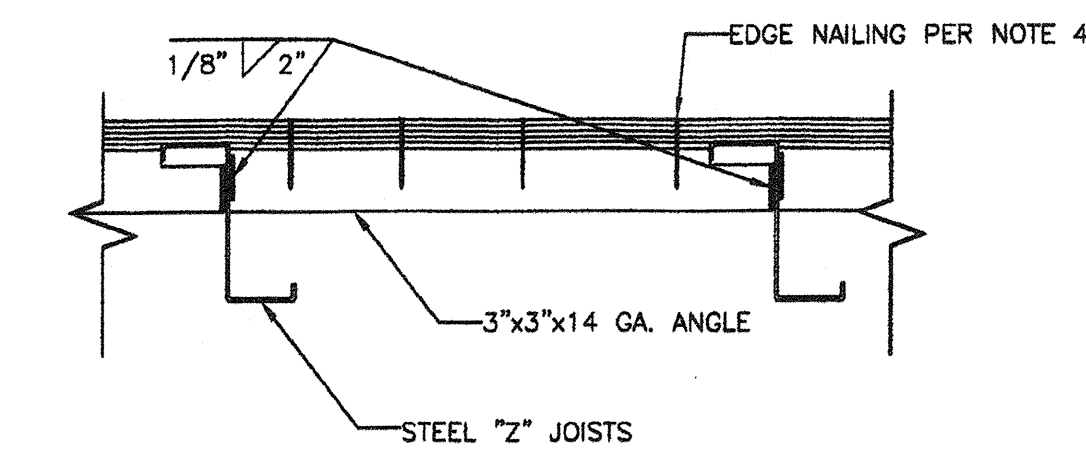
Z SECTION PROPERTIES

A=0.89 IN.²
S_x=1.85 IN.³
I_x=6.37 IN.⁴

Z SECTION PROPERTIES

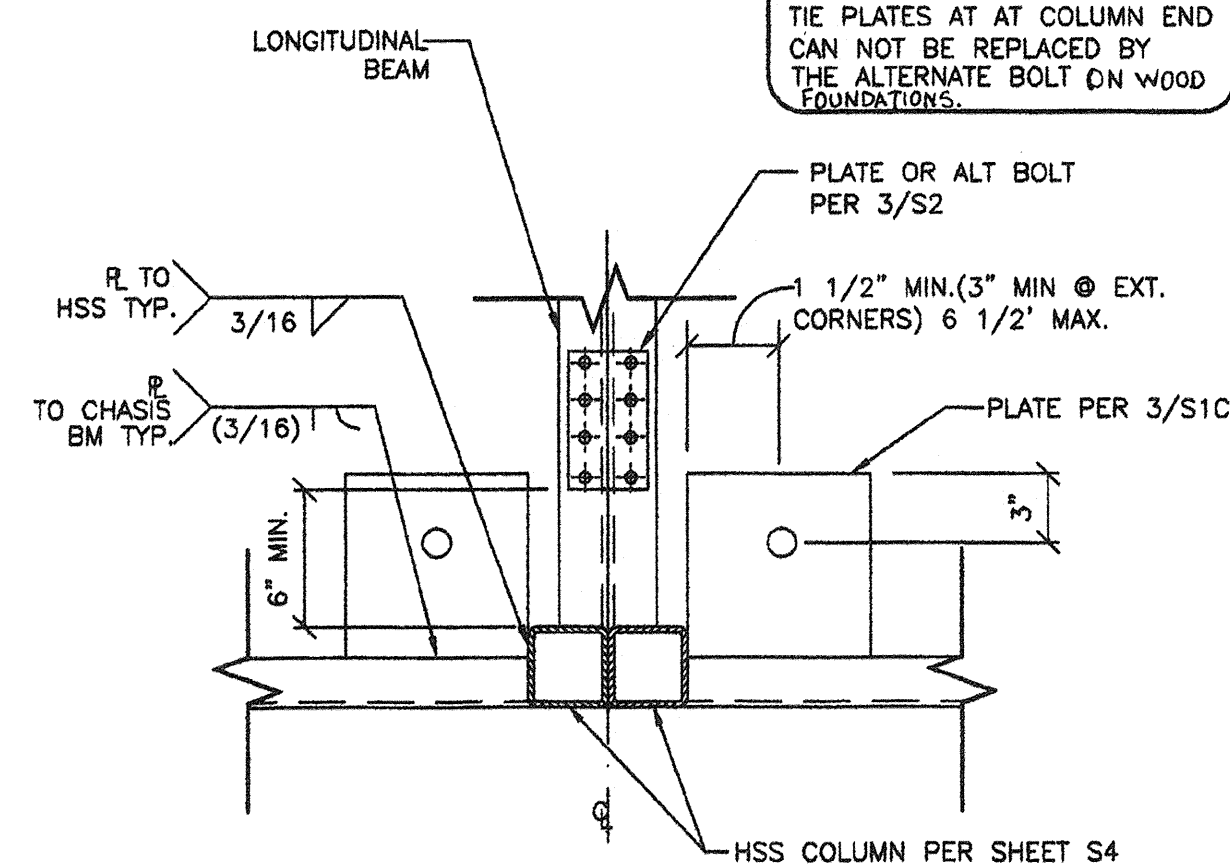
A=1.38 IN.²
S_x=2.97 IN.³
I_x=10.20 IN.⁴

1A TYP JOISTS
S2 1 1/2"=1'-0"

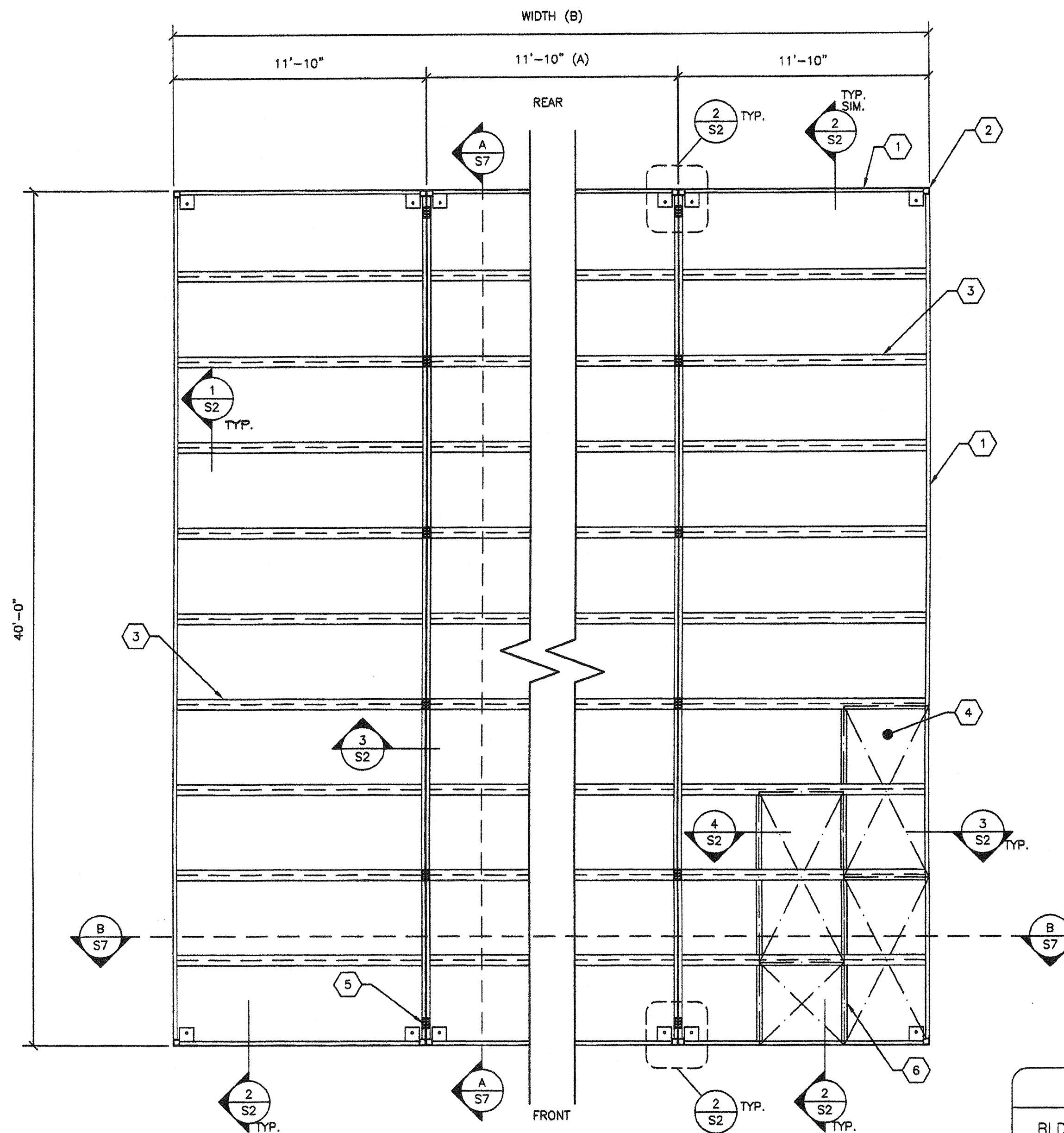


4 TYP. ANGLE TO Z-PURLIN ATTACHMENT
S2 1 1/2"=1'-0"

NOTE:
AT 48'x40' BUILDINGS THE
TIE PLATES AT AT COLUMN END
CAN NOT BE REPLACED BY
THE ALTERNATE BOLT ON WOOD
FOUNDATIONS.



2 TYP. FL. BEAM CONNECTION
S2 1 1/2"=1'-0"



A TYPICAL FLOOR FRAMING LAYOUT
S2 1/4"=1'-0" PLYWOOD FLOOR

- KEY NOTES -

- 1 C 7x9.8 FLOOR BEAM ALTERNATE C10x15.3
- 2 HSS COLUMN PER SHEET S4
- 3 FLOOR JOIST (SEE 1A/S2)

LIVE LOAD PSF	FLOOR JOIST SCHEDULE SPACING	
	14 GA. JOIST	12 GA. JOIST
50 PSF	48" O.C.	48" O.C.
50+15 PSF	24" O.C.	48" O.C.
100 PSF	24" O.C.	24" O.C.
150 PSF	24" O.C.	24" O.C.

- 4 1 1/8" T&G PLYWOOD FLOOR SHIT'G STURDI-I-FLOOR 48" O.C SPAN RATING EXP. 1 CONFORMING TO PS 1-95 OPTION: UNI-FLOOR BY PITTSBURGH TESTING LAB CONFORMING TO PS 1-95. STAGGER SHEETS 48" O.C AS SHOWN W/ FACE GRAIN NORMAL TO FLOOR JOISTS. FASTENING: BOUNDARY OF EA. MODULE: #12x2 1/4" WOOD TEK @ CHANNEL @ 6" O.C PANEL EDGES: ET&F 0.144"x2" MIN. POWER DRIVEN PINS @ 8" O.C. FIELD: ET&F 0.144"x2" MIN. POWER DRIVEN PINS @ 10" O.C. NOTE: SEE ICC ER-4144 FOR ET&F BRAND PNEUMATIC PINS.
- 5 PLATE 1/8"x 3 1/2"x6" W/(8)#12x1" SHEET METAL SCREWS @ 10'-0" O.C MAX

- ALTERNATE:
1/2"x1 1/2" MB @ 10'-0" O.C TYP (8'-0" O.C. MAX @ 48"x40' 150 PSF FLOOR LIVE LOAD BUILDING ON WOOD FOUNDATIONS) MAX AND 6" MAX FROM EACH END OF MOUDLE. BOLT # + 1/6" MAX HOLE THRU CHANNELS
- 6 3"x3"x14 GA. ANGLE @ UNSUPPORTED PLYWOOD EDGES @ THE TWO END MODULES OF 48'x40' 150 P.S.F BUILDING ON WOOD FOUNDATION ONLY. PER DETAIL 4/S2

- GENERAL NOTES -

1. THE MATERIAL THICKNESS OF STRUCTURAL MEMBER, IN THEIR END-USE, SHALL MEET OR EXCEED THE MINIMUM BASE METAL THICKNESS SPECIFIED IN THE TABLE OR IN THE PLAN. THE MATERIAL GAUGE DESIGNATION IN THE PLAN SHALL BE USED AS REFERENCE ONLY.

- MODULE SCHEDULE -

BLDG SIZE (FT)	TOTAL # OF 12' WIDE MODULES	"A" TOTAL # OF CENTER MODULES	"B" TOTAL BLDG WIDTH
24' x 40'	2	0	23'-8 1/4"
36' x 40'	3	1	36'-6 1/2"
48' x 40'	4	2	47'-4 3/4"
60' x 40'	5	3	59'-3"
72' x 40'	6	4	71'-1 1/4"
84' x 40'	7	5	82'-11 1/2"
96' x 40'	8	6	94'-9 3/4"
108' x 40'	9	7	106'-8"
120' x 40'	10	8	118'-6 1/4"

NO	DATE	DESCRIPTION

DATE: 02/11/08
SCALE: NOTED
DRAWN BY: DM
SERIAL NO.:

CUSTOMER:
2:12 PITCHED ROOF 24' x 40' THRU 120' x 40' RELOCATABLE BUILDINGS FLOOR FRAMING PLANS (PLYWOOD)

AMS
American Modular Systems Inc.
787 Sprackels Ave, Manteca, CA 95336
(209)825-1921 Fax: (209)825-7018
americanmodular.com

APPROVALS:
THESE DRAWINGS ARE PRELIMINARY AND NOT FOR CONSTRUCTION UNLESS STAMPED & SIGNED BY THE ENGINEER OF RECORD.

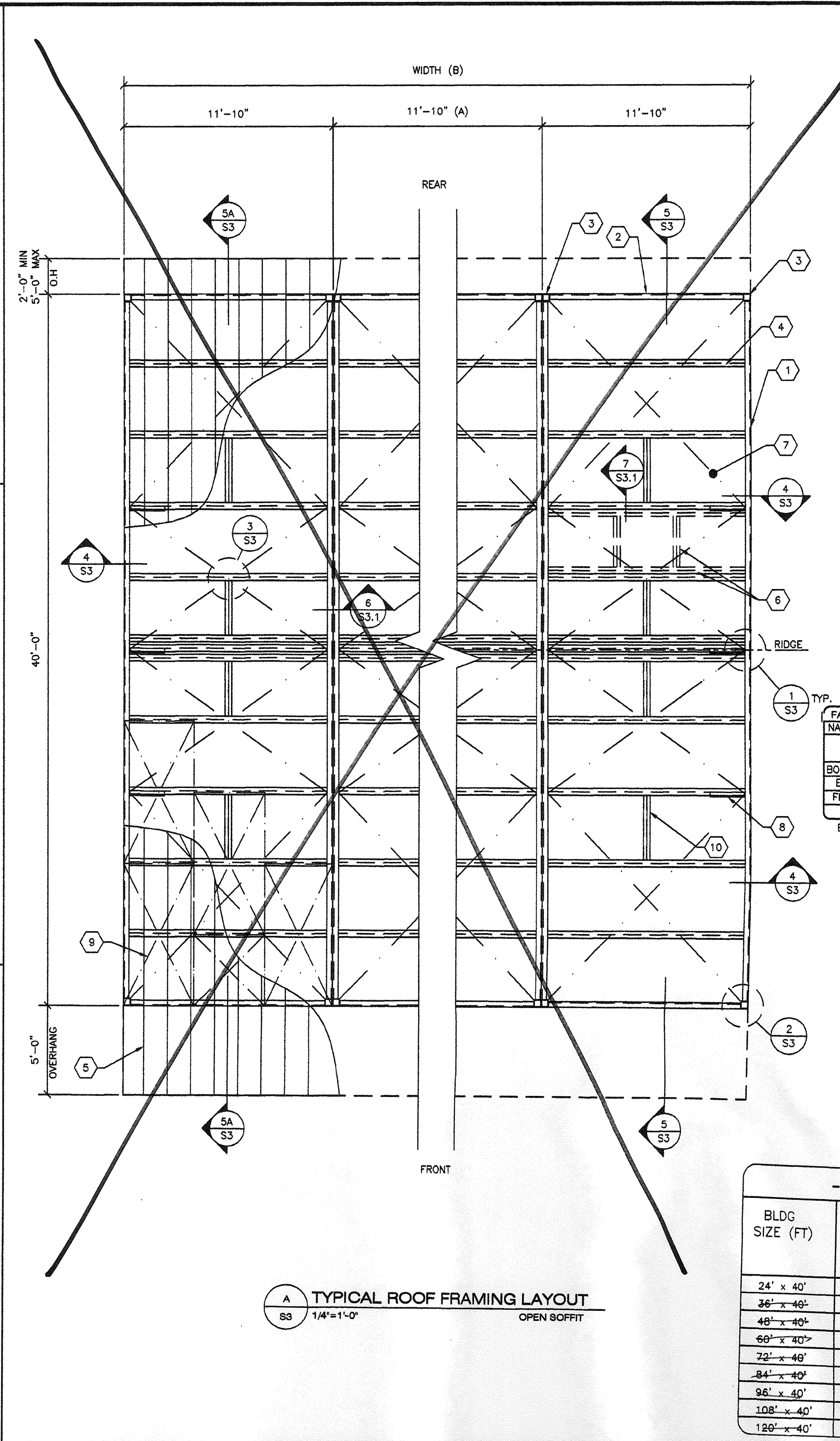
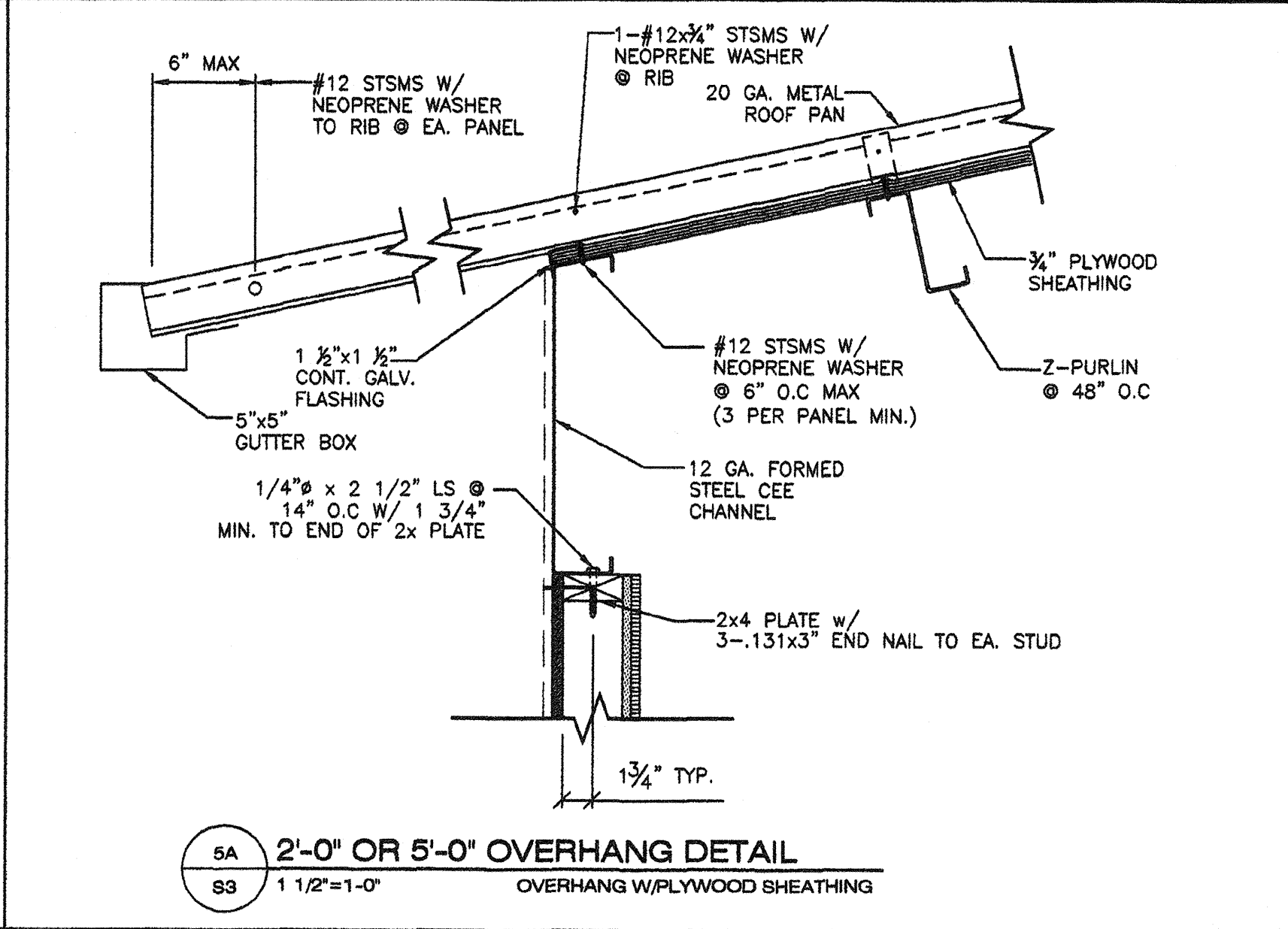
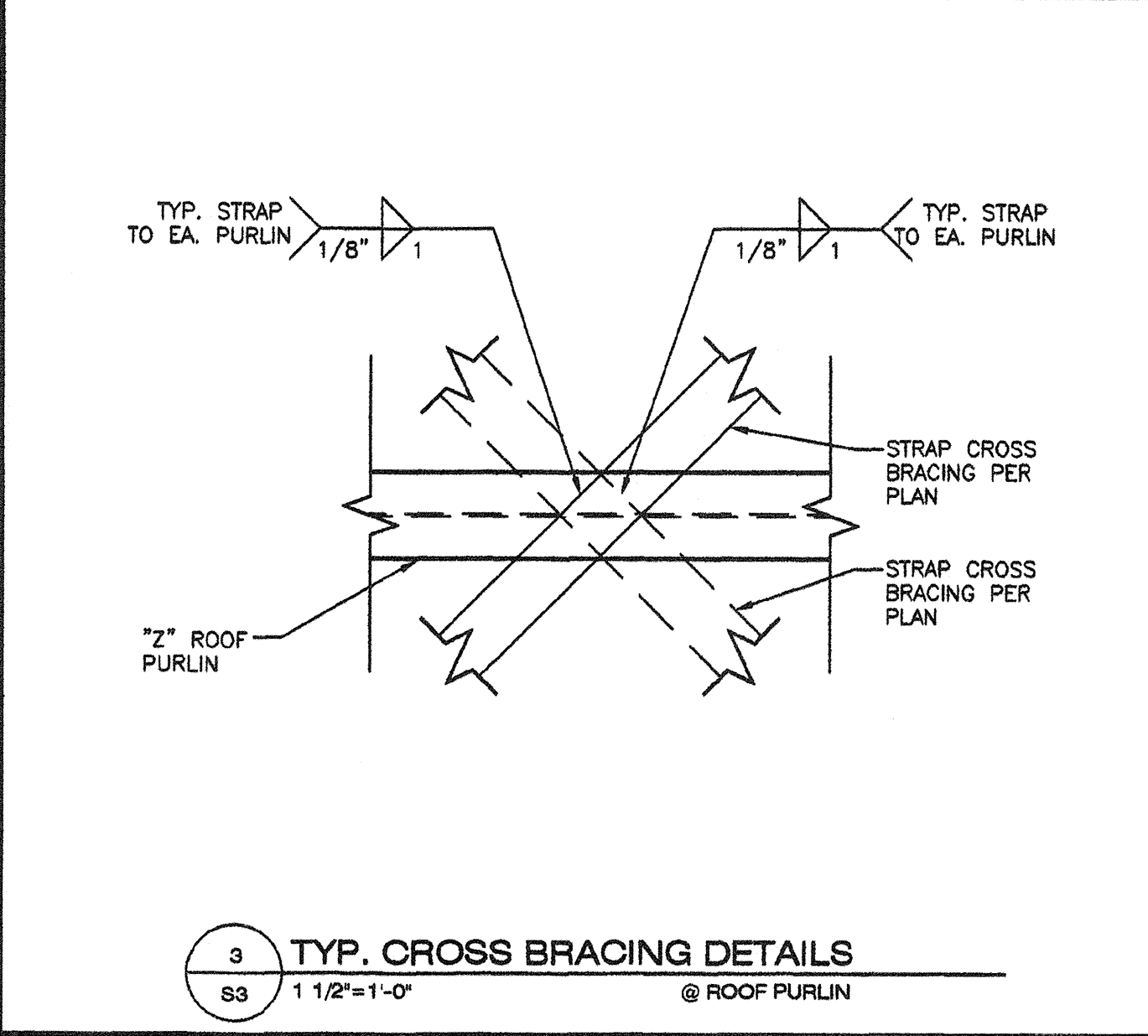
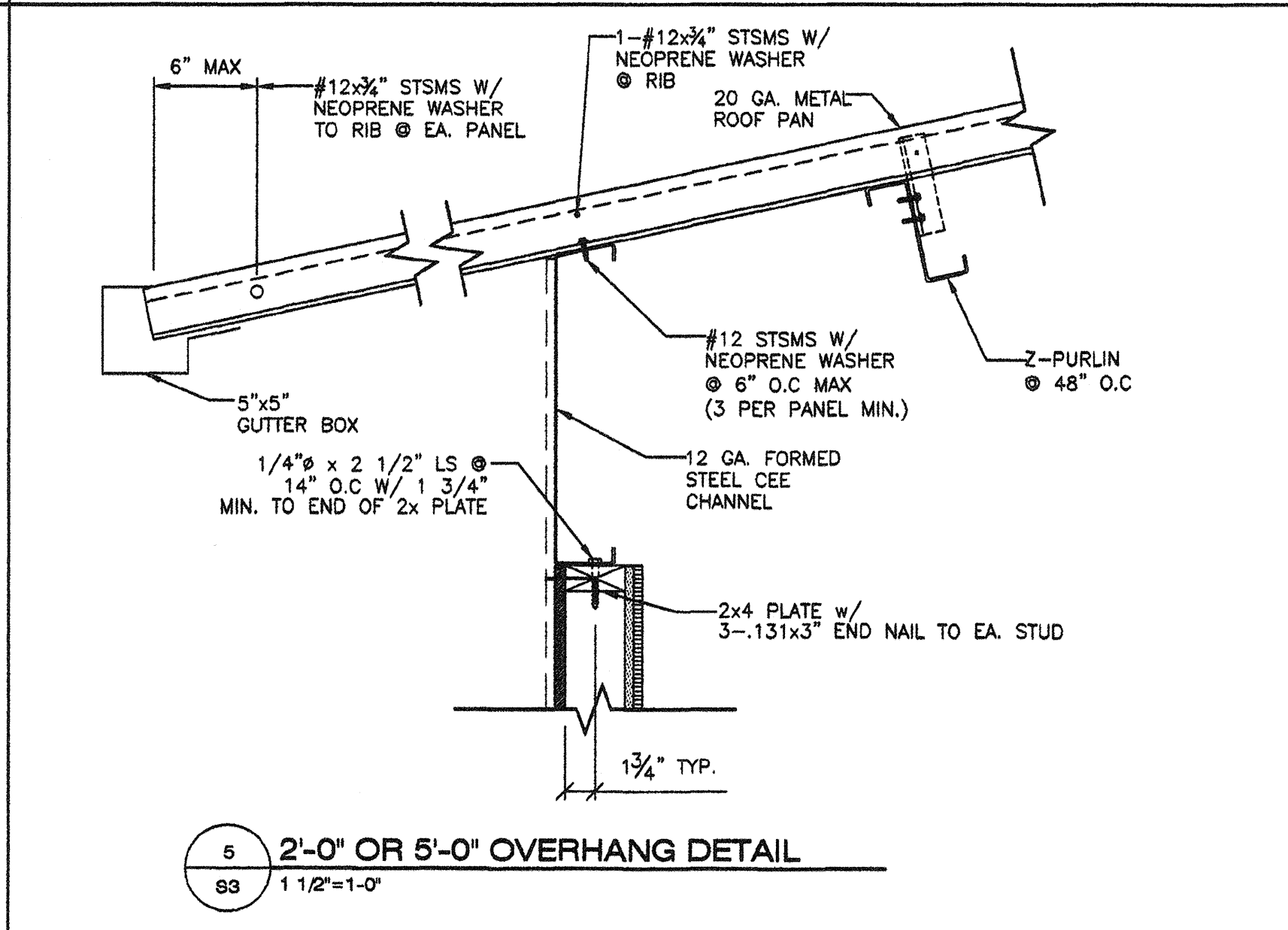
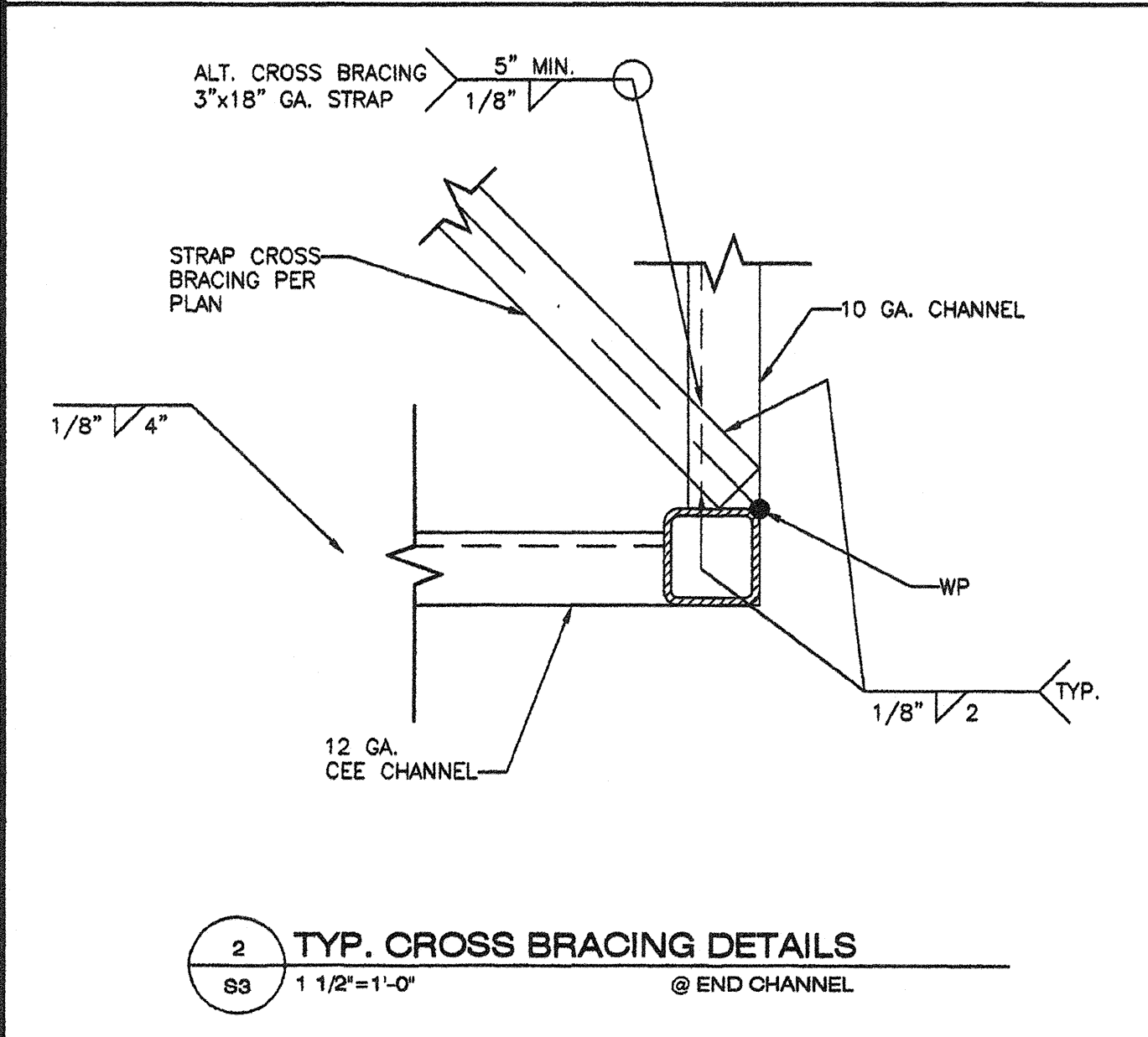
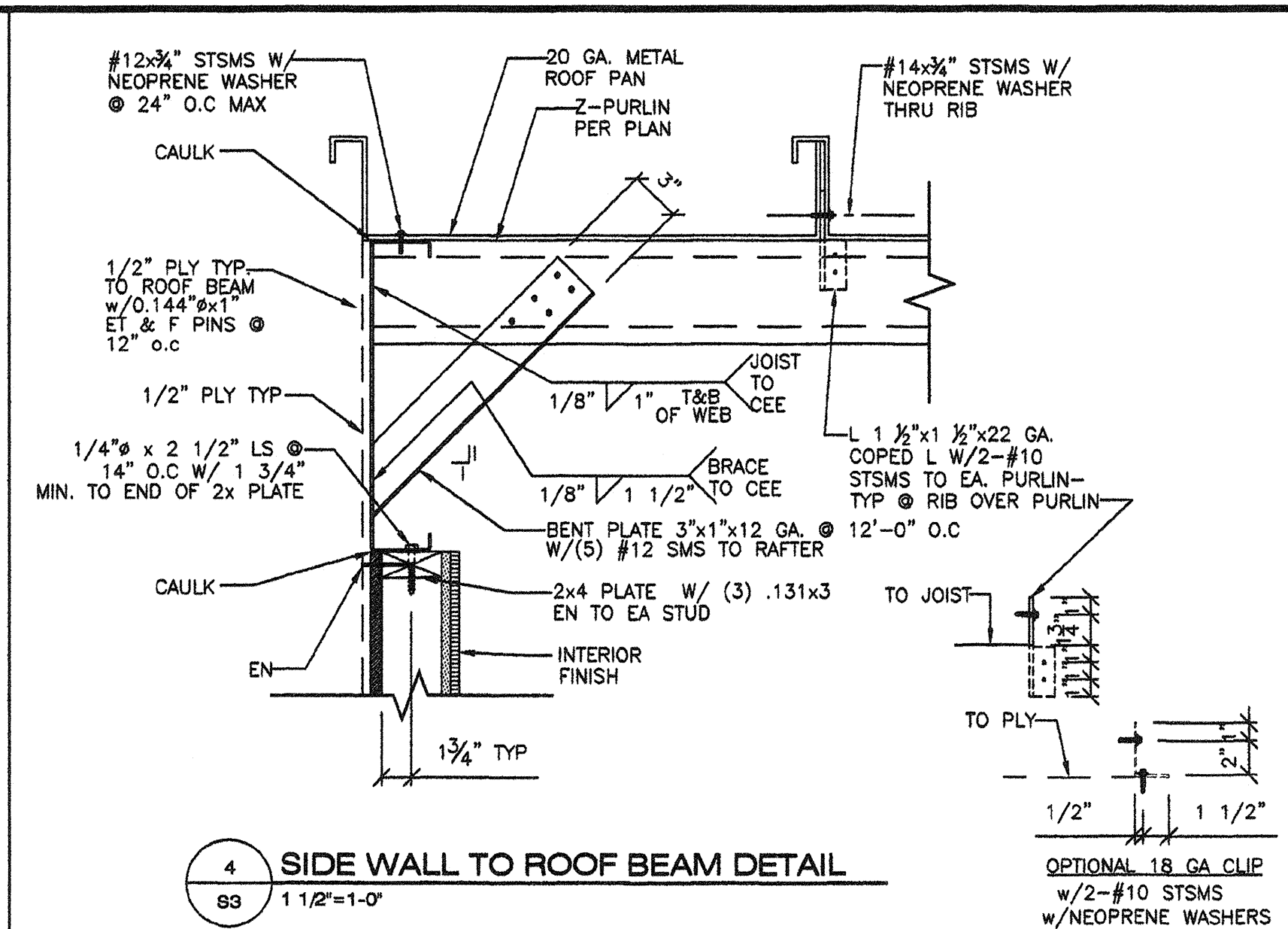
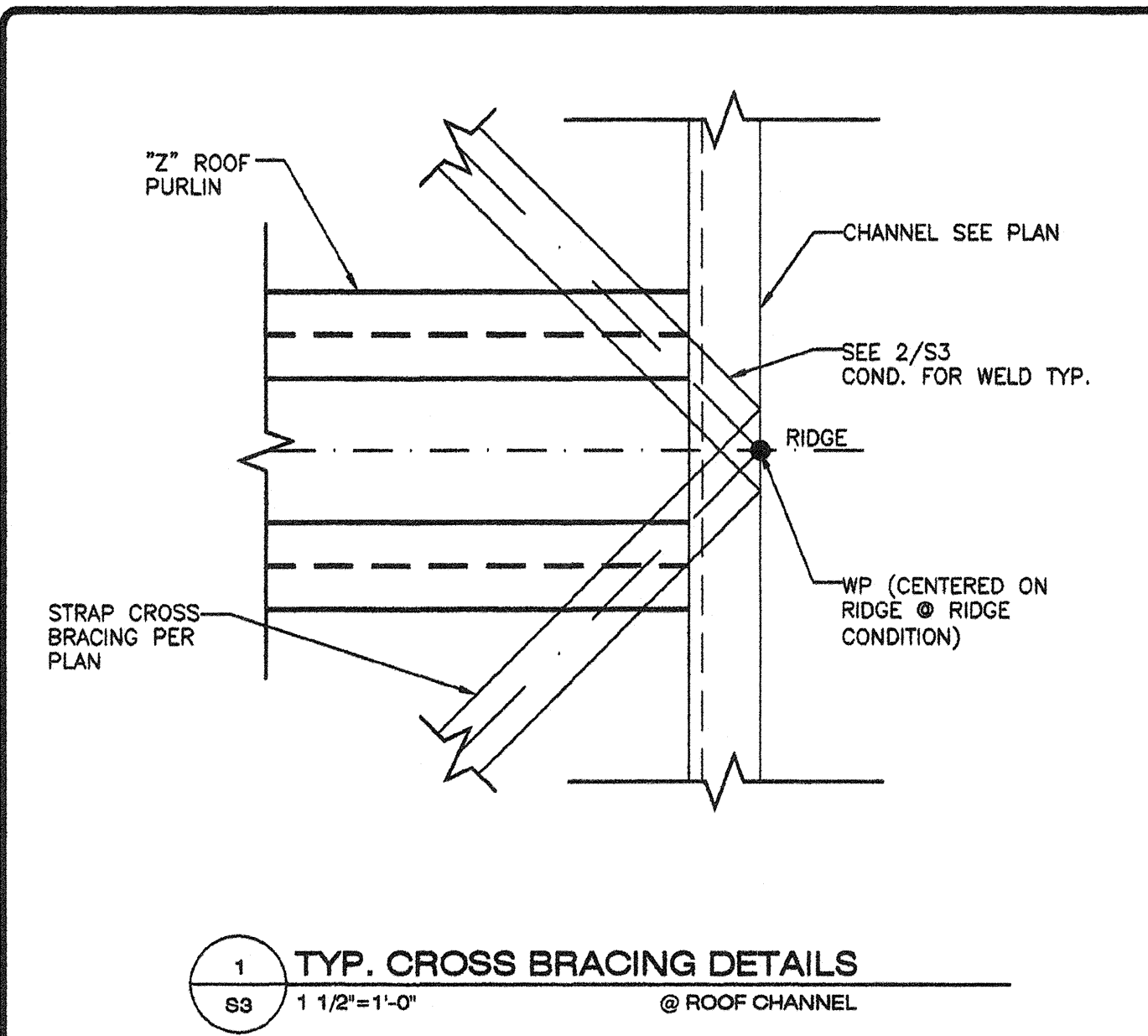
REGISTERED PROFESSIONAL ENGINEER
Kenneth A. Luttrell
No. 1418
EXP. 3-31-09
Structural Engineer
STATE OF CALIFORNIA

IDENTIFICATION STAMP
DIV. OF THE STATE ARCHITECT
112985
AC FLS SS
DATE: 02/21/2008

IDENTIFICATION STAMP
DIV. OF THE STATE ARCHITECT
OFFICE OF REGULATION SERVICES
PC 02-109695
AC FLS SS
DATE: 3/23/2009

PROJECT No.
PC
S2

THESE DRAWINGS AND SPECIFICATIONS ARE THE PROPERTY OF AMERICAN MODULAR SYSTEMS AND ARE NOT TO BE REPRODUCED, CHANGED OR COPIED IN ANY FORM OR MANNER, NOR ARE THEY TO BE ASSIGNED TO ANY THIRD PARTY WITHOUT THE WRITTEN AUTHORIZATION OF AMERICAN MODULAR SYSTEMS.



- KEY NOTES -**
- LONGITUDINAL ROOF BEAM TYP. (SEE 10/S3.1)
 - 12 GA TRANSVERSE ROOF BEAM TYP. (SEE 11/S3.1)
 - HSS COLUMN PER SHEET S4
 - Z FORMED ROOF PURLINS @ 48" O.C. MAX (SEE 9/S3.1)
 - 20 GA. ROOF PAN 3 SPAN CONTINUOUS MIN. (SEE 8/S3.1)
 - PROVIDE DOUBLE 6" PURLINS W/6" PURLIN BLKG PER 7/S3.1 @ OPTIONAL ROOF MOUNT HVAC. (MAX WEIGHT 600#)
 - 2"x16 GA. STRAP CROSS BRACING GRADE 50 ALT. CROSS BRACING 3"x18 GA. GRADE 50
 - 3x1x1/2 GA. BENT PLATE BRACE PER 4/S3 @ EA. STRAP TO 10 GA. BM CONNECTION & @ 12'-0" OC MAX @ EXTERIOR WALL ONLY. PROVIDE 2 @ RIDGE & PROVIDE PURLIN BLKG PER NOTE 10 BELOW.
 - ALTERNATE TO CROSS BRACING: 3/4" APA RATED L-P OSB SHEATHING OR 3/4" PLYWOOD (ALL SHEATHING SHALL BE EITHER T&G OR EDGE CLIP) COMPLY WITH DSA PA-082, CD EXPOSURE-1 48/24 SPAN INDEX, FACE GRAIN NORMAL TO ROOF PURLINS ALL BOUNDARY, EDGE & FIELD ATTACHMENTS SHALL BE 1" MIN. FROM EDGE OF PLYWOOD & EDGE OF STEEL SUPPORTING MEMBER. REFER TO SCHEDULE BELOW FOR FASTENING.
 - PURLIN BLOCKING WELD TO ROOF PURLINS PER DETAIL 7/S3.1. BLOCKING IS ONLY REQUIRED AT THE OUTSIDE MODULES @ PURLINS WITH DIAGONAL BRACING PER NOTE 8 ABOVE.

FASTENING SCHEDULE

NAILING	0.144 PINS SPACING		# 10 SMS SPACING	
	TYPICAL	WITHIN 4' OF BUILDING CORNERS	TYPICAL	WITHIN 4' OF BUILDING CORNERS
BOUNDARY	6" O.C.	6" O.C.	6" O.C.	6" O.C.
EDGE	6" O.C.	6" O.C.	6" O.C.	6" O.C.
FIELD	12" O.C.	6" O.C.	12" O.C.	12" O.C.

ET & F 0.144 PINS PER ICC ESR #4144

- GENERAL NOTES -**
- THE MATERIAL THICKNESS OF STRUCTURAL MEMBER, IN THEIR END-USE, SHALL MEET OR EXCEED THE MINIMUM BASE METAL THICKNESS SPECIFIED IN THE TABLE OR IN THE PLAN. THE MATERIAL GAUGE DESIGNATION IN THE PLAN SHALL BE USED AS REFERENCE ONLY.
 - SEE SHEET S5 FOR TYP. SIDE WALL FRAMING.
 - SEE SHEET S5 FOR TYP. END WALL FRAMING.
 - ALL FASTENERS THRU METAL ROOF PANEL SHALL BE INSTALLED W/NEOPRENE WASHERS.

- MODULE SCHEDULE -

BLDG SIZE (FT)	TOTAL # OF 12" WIDE MODULES	"A" TOTAL # OF CENTER MODULES	"B" TOTAL BLDG WIDTH
24' x 40'	2	0	23'-8 1/4"
36' x 40'	3	1	35'-6 1/2"
48' x 40'	4	2	47'-4 3/4"
60' x 40'	5	3	59'-3"
72' x 40'	6	4	71'-1 1/4"
84' x 40'	7	5	82'-11 1/2"
96' x 40'	8	6	94'-9 3/4"
108' x 40'	9	7	106'-8"
120' x 40'	10	8	118'-6 1/4"

REVISIONS

NO	DATE	DESCRIPTION

DATE: 02/06/08
 SCALE: NOTED
 DRAWN BY: DM
 SERIAL NO.:

CUSTOMER:
 2:12 PITCHED ROOF 24'x40' THRU 120'x40' RELOCATABLE BUILDINGS ROOF FRAMING PLANS (OPEN SOFFIT)

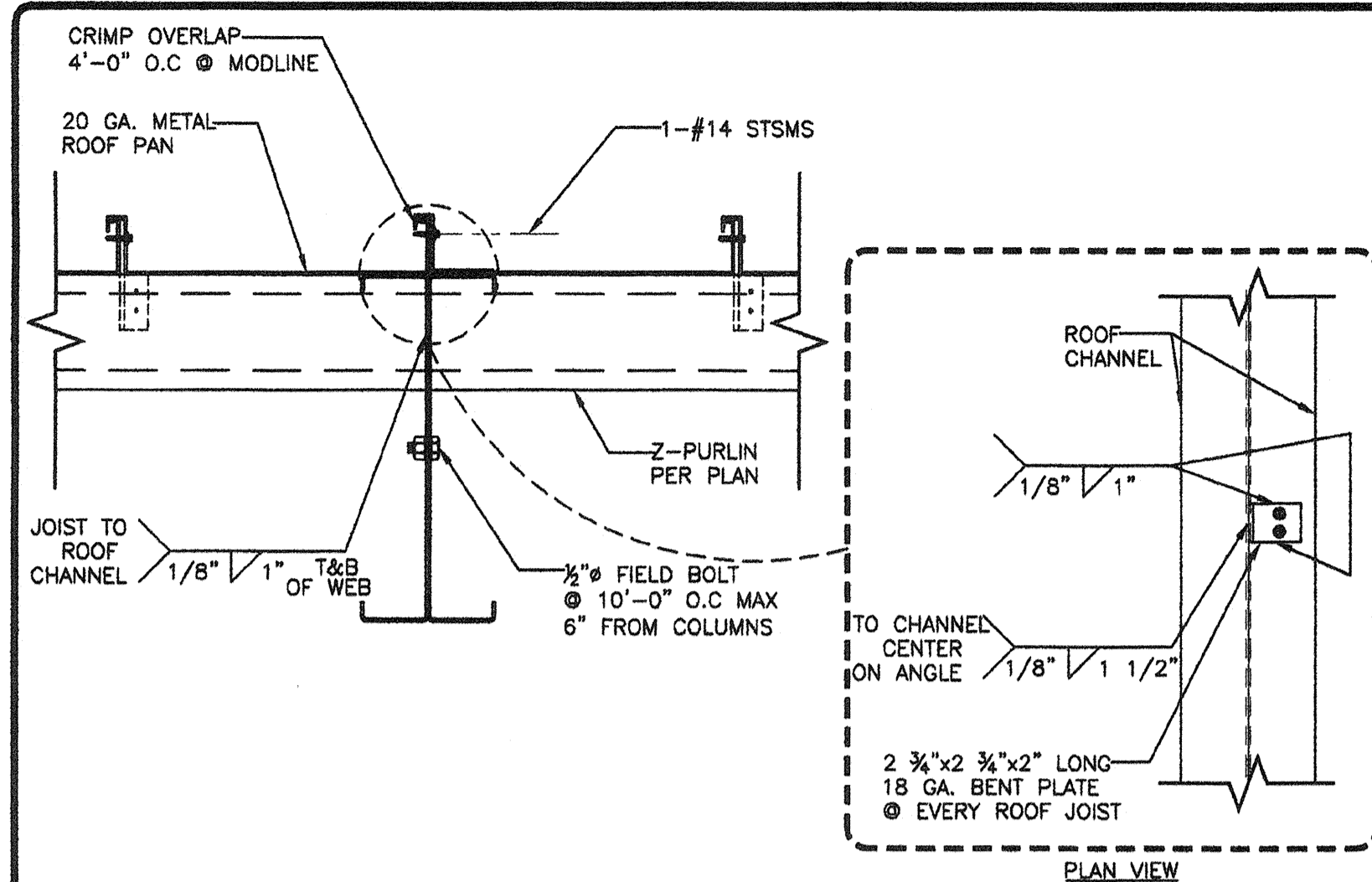
ZMS
 American Modular Systems Inc.
 787 Sprucekita Ave. Manteca, CA 95338
 (209)625-1921 Fax (209)925-7018
 americanmodular.com

APPROVALS:
 THESE DRAWINGS ARE PRELIMINARY AND NOT FOR CONSTRUCTION UNLESS STAMPED & SIGNED BY THE ENGINEER OF RECORD.

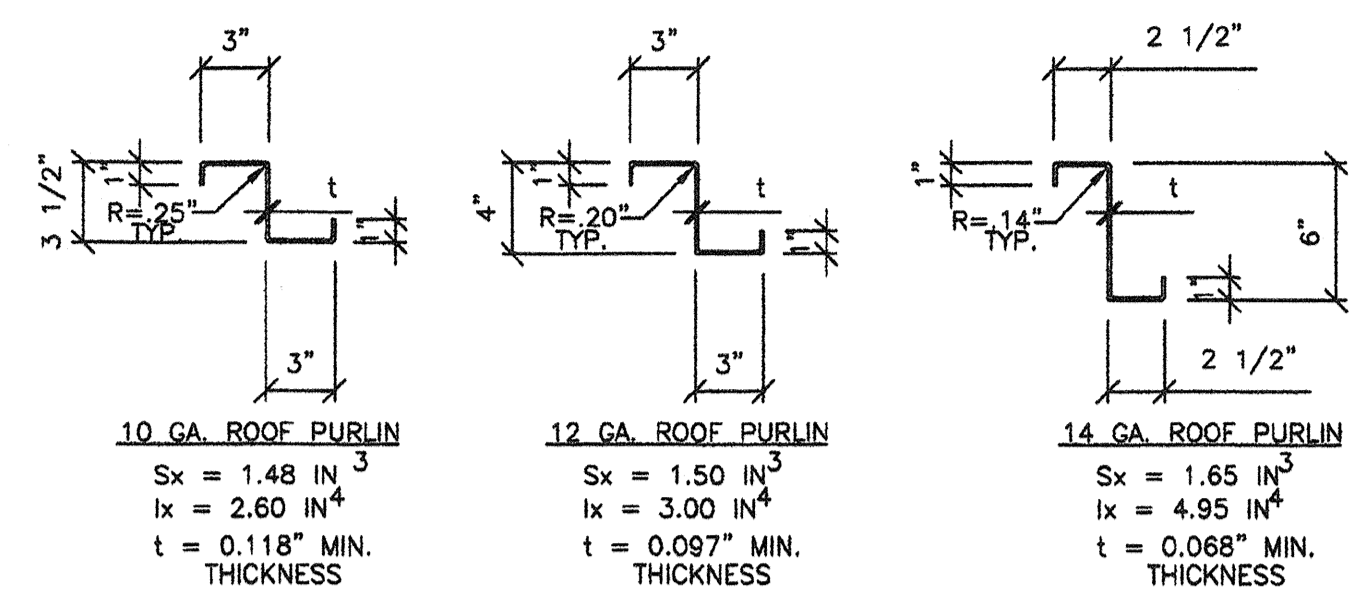
IDENTIFICATION STAMP
 DIV. OF THE STATE ARCHITECT
 OFFICE OF REGULATION SERVICES
 65-112985
 AC FLS SS
 DATE: SEP 24 2007

PROJECT No.
 PC
S3

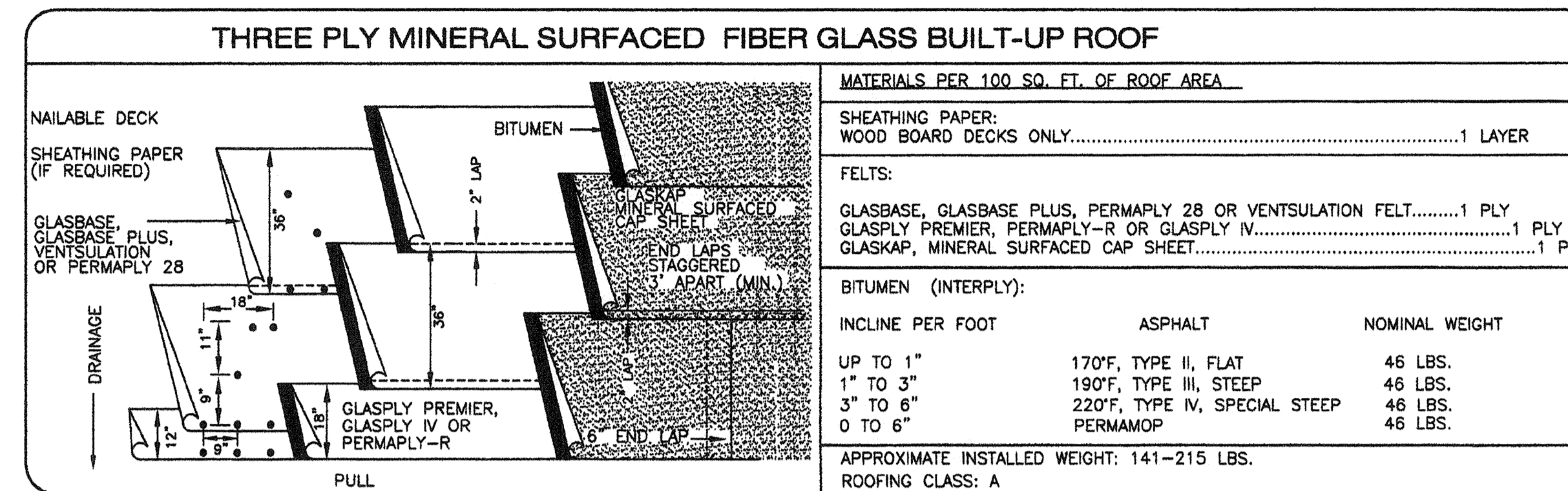
THESE DRAWINGS AND SPECIFICATIONS ARE THE PROPERTY OF AMERICAN MODULAR SYSTEMS AND ARE NOT TO BE REPRODUCED, CHANGED OR COPIED IN ANY FORM OR MANNER, NOR ARE THEY TO BE ASSIGNED TO ANY THIRD PARTY WITHOUT THE WRITTEN AUTHORIZATION OF AMERICAN MODULAR SYSTEMS.



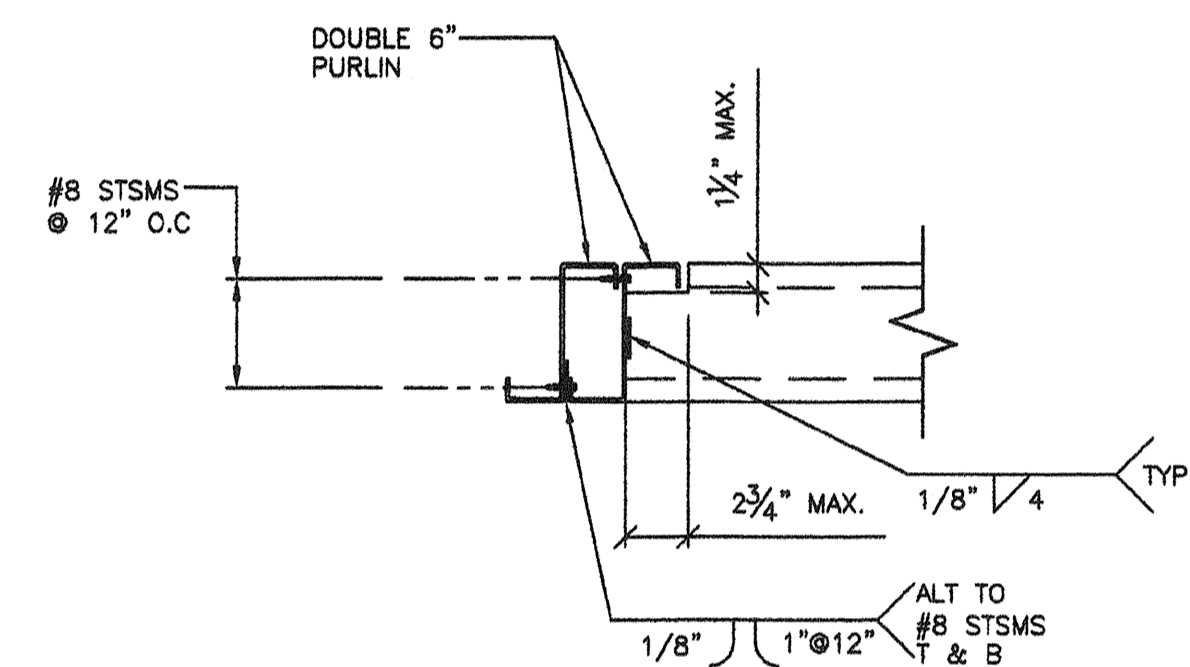
6 ROOF BEAM CONNECTION DETAIL
S3.1 1 1/2"=1'-0"



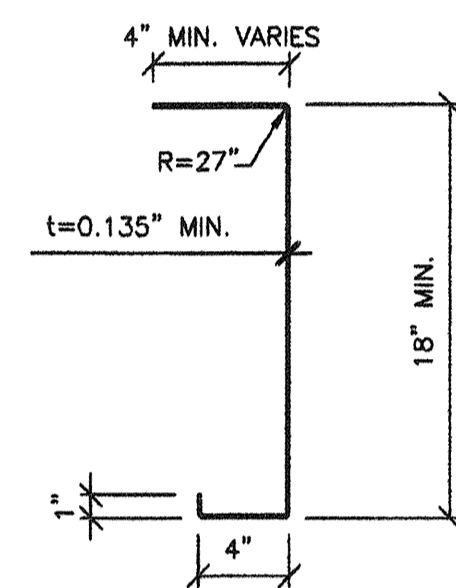
9 Z PURLINS DETAILS AND PROPERTIES
S3.1 1 1/2"=1'-0"



12 THREE PLY MINERAL BUILT-UP ROOF
S3.1 1 1/2"=1'-0"



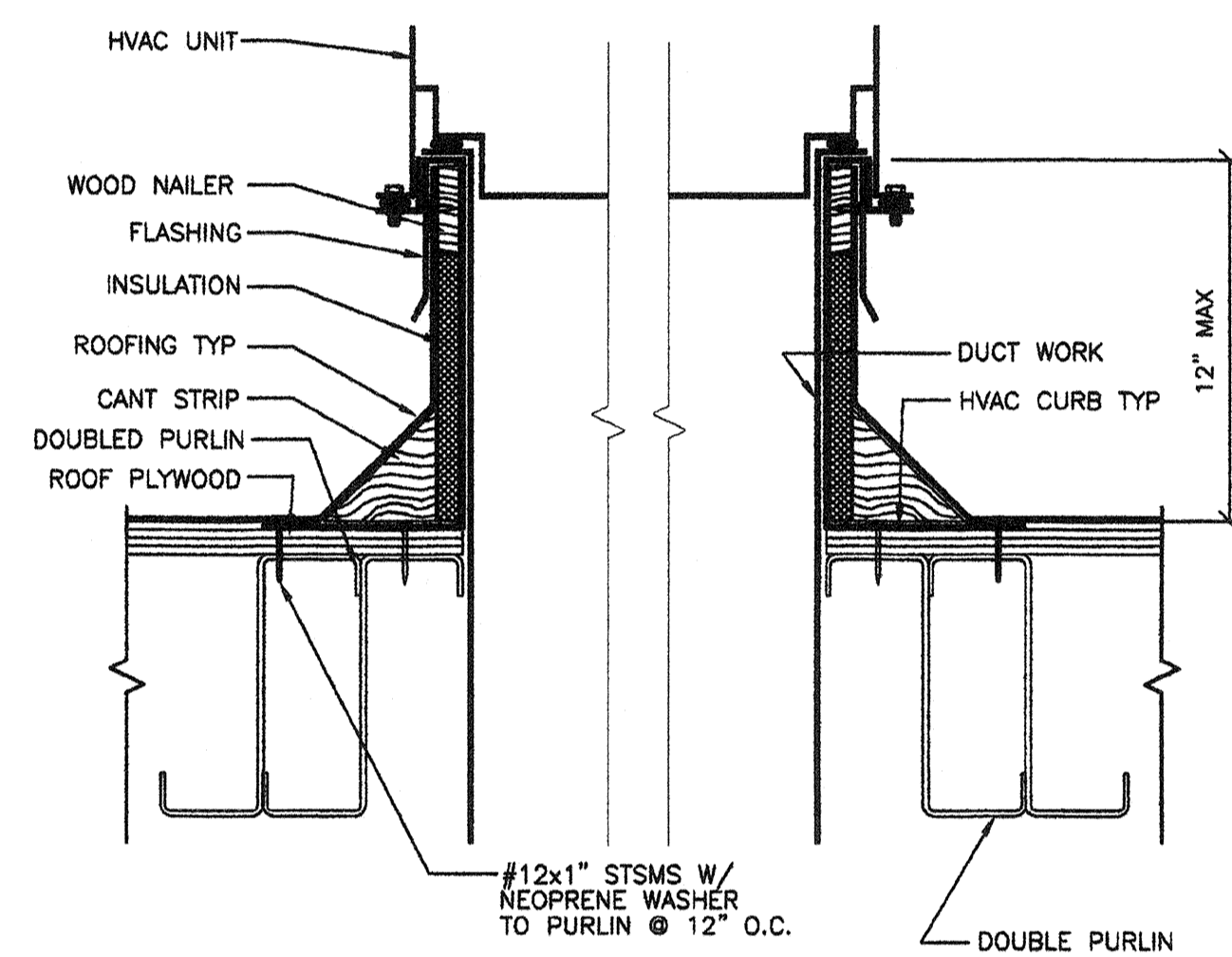
7 BLOCKING DETAIL
S3.1 1 1/2"=1'-0"



A	3.71 IN ²
S _x MIN.	17.32 IN ³
I _x MIN.	159.80 IN ⁴

BEAM FABRICATED FROM ASTM A1011 GR50 W/RUST INHIBITIVE COATING.

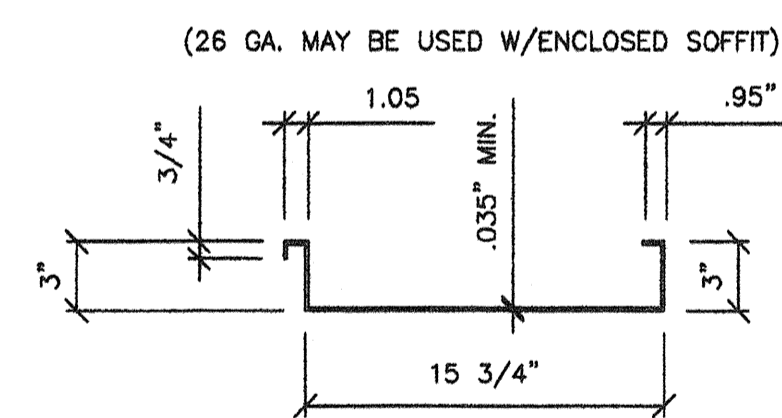
10 LONGITUDINAL ROOF BEAM
S3.1 1 1/2"=1'-0"



12 HVAC CURB DETAIL ANCHORAGE
S3.1 3"=1'-0"

- GENERAL NOTES -

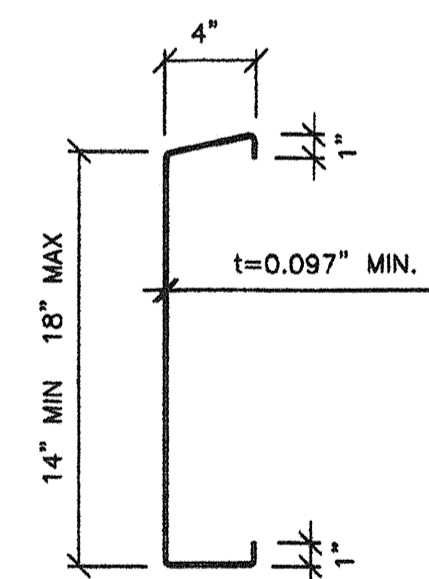
1. THE MATERIAL THICKNESS OF STRUCTURAL MEMBER, IN THEIR END-USE, SHALL MEET OR EXCEED THE MINIMUM BASE METAL THICKNESS SPECIFIED IN THE TABLE OR IN THE PLAN. THE MATERIAL GAGE DESIGNATION IN THE PLAN SHALL BE USED AS REFERENCE ONLY.



$S_x(t) = 0.326 \text{ IN}^3$	$S_x(b) = 0.323 \text{ IN}^3$
$S_x(b) = 1.365 \text{ IN}^3$	$S_x(b) = 0.283 \text{ IN}^3$
$I_x = 0.789 \text{ IN}^4$	$I_x = 0.452 \text{ IN}^4$

PAN FABRICATED FROM ASTM A1011 GRADE 50, HOT ROLLED SHEETS. PAN TO BE GIVEN A RUST INHIBITIVE COATING.

8 20 GA. ROOF PAN
S3.1 1 1/2"=1'-0"



	14"	18"
A	2.36 IN ²	2.76 IN ²
S _x MIN.	9.58 IN ³	13.60 IN ³
I _x MIN.	67.016 IN ⁴	122.44 IN ⁴

BEAM FABRICATED FROM ASTM A1011 GR50 W/RUST INHIBITIVE COATING.

11 12 GA. ROOF CHANNEL
S3.1 1 1/2"=1'-0"

REVISIONS		
NO	DATE	DESCRIPTION

DATE: 02/12/06
SCALE: NOTED
DRAWN BY: DM
SERIAL NO.:

CUSTOMER:
2:12 PITCHED ROOF 24' x 40' THRU 120' x 40' RELOCATABLE BUILDINGS
ROOF FRAMING PLANS (OPEN SOFFIT)

AMS
American Modular Systems Inc.
787 Spreckels Ave, Manteca, CA 95336
(209)925-1921 Fax: (209)925-7018
amer@ammodular.com

APPROVALS:
THESE DRAWINGS ARE PRELIMINARY AND NOT FOR CONSTRUCTION UNLESS STAMPED & SIGNED BY THE ENGINEER OF RECORD.

REGISTERED PROFESSIONAL ENGINEER
Kenneth A. Luttrell
No. 0418
Exp. 3-31-08
Structural Engineer
STATE OF CALIFORNIA

REGISTERED ARCHITECT
No. C12631
Ren. 3.21.04
STATE OF CALIFORNIA

IDENTIFICATION STAMP
DIV. OF THE STATE ARCHITECT
OFFICE OF REGULATION SERVICES
02-112985
AC FLS SS
DATE SEP 24 2009

IDENTIFICATION STAMP
DIV. OF THE STATE ARCHITECT
OFFICE OF REGULATION SERVICES
PC 02-109695
AC FLS SS
DATE 3/23/2009

PROJECT No.
PC
S3.1

THESE DRAWINGS AND SPECIFICATIONS ARE THE PROPERTY OF AMERICAN MODULAR SYSTEMS AND ARE NOT TO BE REPRODUCED, CHANGED OR COPIED IN ANY FORM OR MANNER, NOR ARE THEY TO BE ASSIGNED TO ANY THIRD PARTY WITHOUT THE WRITTEN AUTHORIZATION OF AMERICAN MODULAR SYSTEMS.