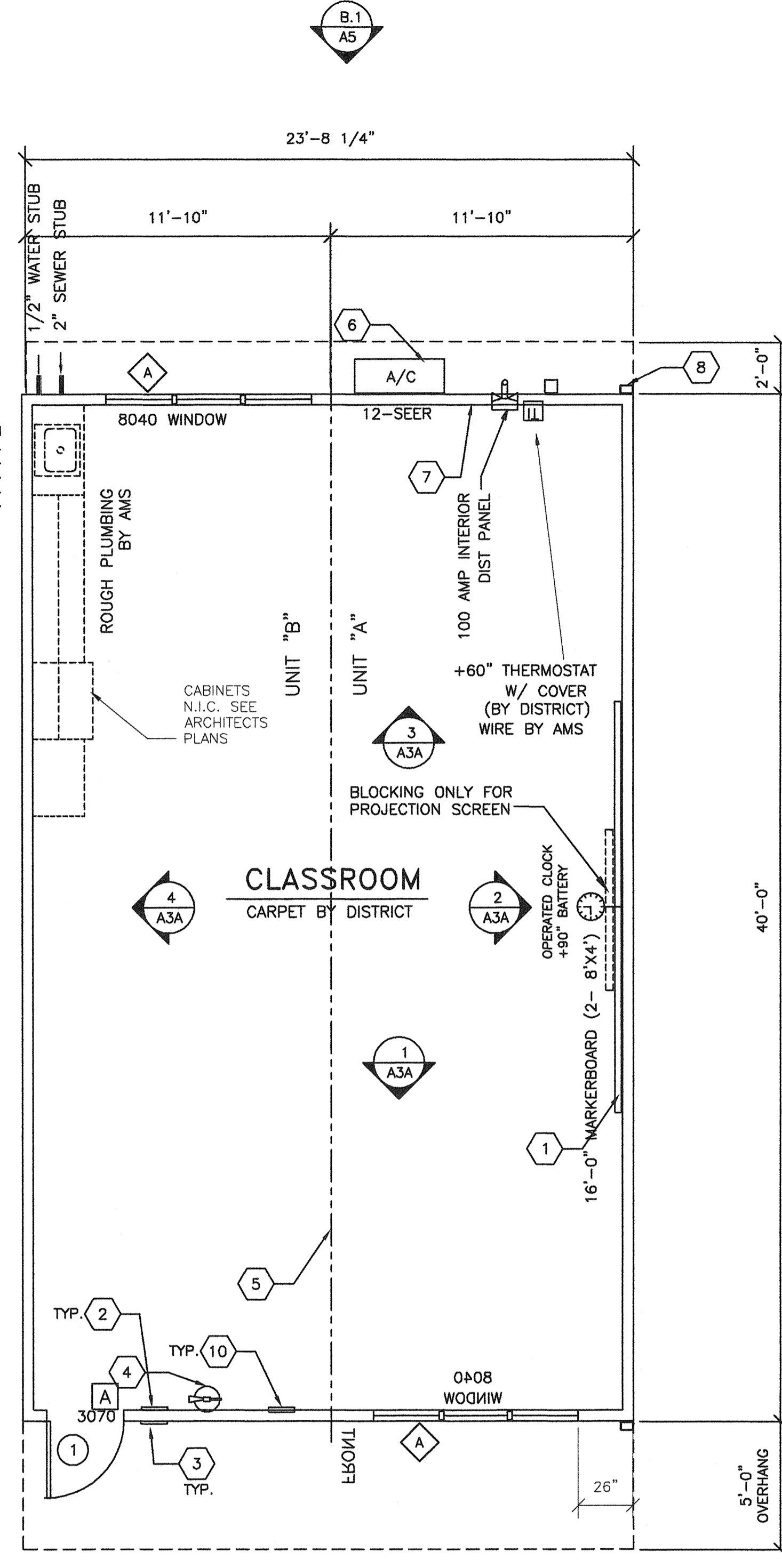


1 TYPICAL FLOOR PLAN
A1 1/4"=1'-0"

INSTALL CAST IRON DRAIN ASSEMBLY @ SINK LEVEL AND BELOW AND P.V.C. VENT PIPE WITHIN WALL. DAYLIGHT VENT THRU WALL JUST ABOVE BOTTOM PLATE.

INSTALL CAST IRON DRAIN ASSEMBLY @ SINK LEVEL AND BELOW AND P.V.C. VENT PIPE WITHIN WALL. DAYLIGHT VENT THRU WALL JUST ABOVE BOTTOM PLATE.



2 TYPICAL FLOOR PLAN
A1 1/4"=1'-0"

- SHEET NOTES -

- 1 (2) 8'x4' MARKER BOARDS
- 2 EXIT TACTILE SIGN PER DETAIL 10/AD (BY OWNER)
- 3 CLASSROOM ID & ISA PER DETAIL PER DETAIL 5 & 9/AD
- 4 FIRE EXTINGUISHER TOP OF BRACKET @ +48" A.F.F.
- 5 TYP MOD LINE
- 6 HVAC UNIT (LOCATION MAY VARY)
- 7 ELECTRICAL PANEL (LOCATION MAY VARY)
- 8 DOWNSPOUT (QUANTITY & LOCATION MAY VARY)
- 9 CARPET
- 10 FLOOR LIVE LOAD SIGN PER 1603A.3 2007 CBC
- 11 OPTIONAL TYPICAL RAMP REFER TO SHEET S6R FOR DETAILS

- GENERAL NOTES -

1. REFER TO SHEETS A2 & A2.1 FOR ADDITIONAL FLOOR PLAN CONFIGURATIONS
2. INTERIOR WALLS MAY OCCUR THROUGHOUT BUILDING REFER TO SHEET S5A FOR ATTACHMENTS.
3. PANIC HARDWARE IS REQUIRED TO BE INSTALLED WHEN THE CONFIGURATION OF ANY ROOM PROVIDES AN OCCUPANT LOAD OF 50 OR GREATER CBC 1008.1.9
4. IF OCCUPANCY LOAD EXCEEDS 50 PROVIDE A SECOND EXIT DOOR PER CBC TABLE 1015.1
5. PROVIDE OCCUPANT LOAD SIGN (BY OWNER) CAPACITY POSTING PER 2007 CBC SECTION 1603A.3 TITLE 19 C.C.R. SECTION 3.3.0. THIS ROOM SHALL BE POST WITH A DURABLE SIGN NEAR THE MAIN EXIT FROM THE ROOM.

- BUILDING SIZE SCHEDULE -

BUILDING	40'-0" MODULES	OVERALL SIZE
24' x 40'	2	23'-8 1/4"
36' x 40'	3	35'-6 1/2"
48' x 40'	4	47'-4 3/4"
60' x 40'	5	59'-3"
72' x 40'	6	71'-1 1/4"
84' x 40'	7	82'-11 1/2"
96' x 40'	8	94'-9 3/4"
108' x 40'	9	106'-8"
120' x 40'	10	118'-6 1/4"

SYMBOL SCHEDULE

- # DOOR (REFER TO SHEET A3 FOR TYPES)
- X DOOR HARDWARE TYPE REFER TO DOOR HARDWARE SCHEDULE
- ◇ WINDOW (REFER TO SHEET A3 FOR TYPES)

DOOR HARDWARE SCHEDULE

A	EXTERIOR DOOR LOCKSET W/ LEVER RHODES SCHLAGE D70PD (LOCKSET BY DISTRICT)
B	EXTERIOR DOOR PANIC BAR W/ PULL ON EXTERIOR VON DUPRIN 22Lx230NL (WHEN REQUIRED)

Exterior Door
 A) Hinges: Hager 4-1/2x4-1/2 butts, BB1279 US26D, 1-1/2 pair each door with set screw in barrel and ball bearing design
 C) Closer: Norton 8500DA or 8500DF series, LCN 1460 Del series or equal. (5 lbs. max. pressure) (15 lbs. max at fire doors.)
 D) Weatherstripping: All exterior doors shall be weatherstripped with Pemko 299D, Ultra WS007, at door jams and head or equal.
 E) Threshold: Threshold shall be Pemko 271 AV 5" aluminum with Pemko 216 AV Ultra TH042 door bottom.

BASED ON PC 02-109695

REVISIONS

NO	DATE	DESCRIPTION

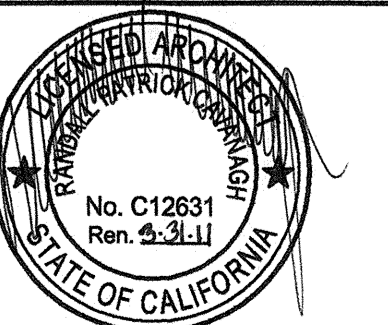
DATE: 08/13/09
 SCALE: NOTED
 DRAWN BY: RS
 SERIAL NO.:

CUSTOMER:
 BAKERSFIELD UNIFIED SCHOOL DISTRICT
 MUNSEY AND FREMONT ELEMENTARY SCHOOL

2:12 PITCHED ROOF 24' x 40' RELOCATABLE BUILDINGS
 TYPICAL FLOOR PLAN



APPROVALS:

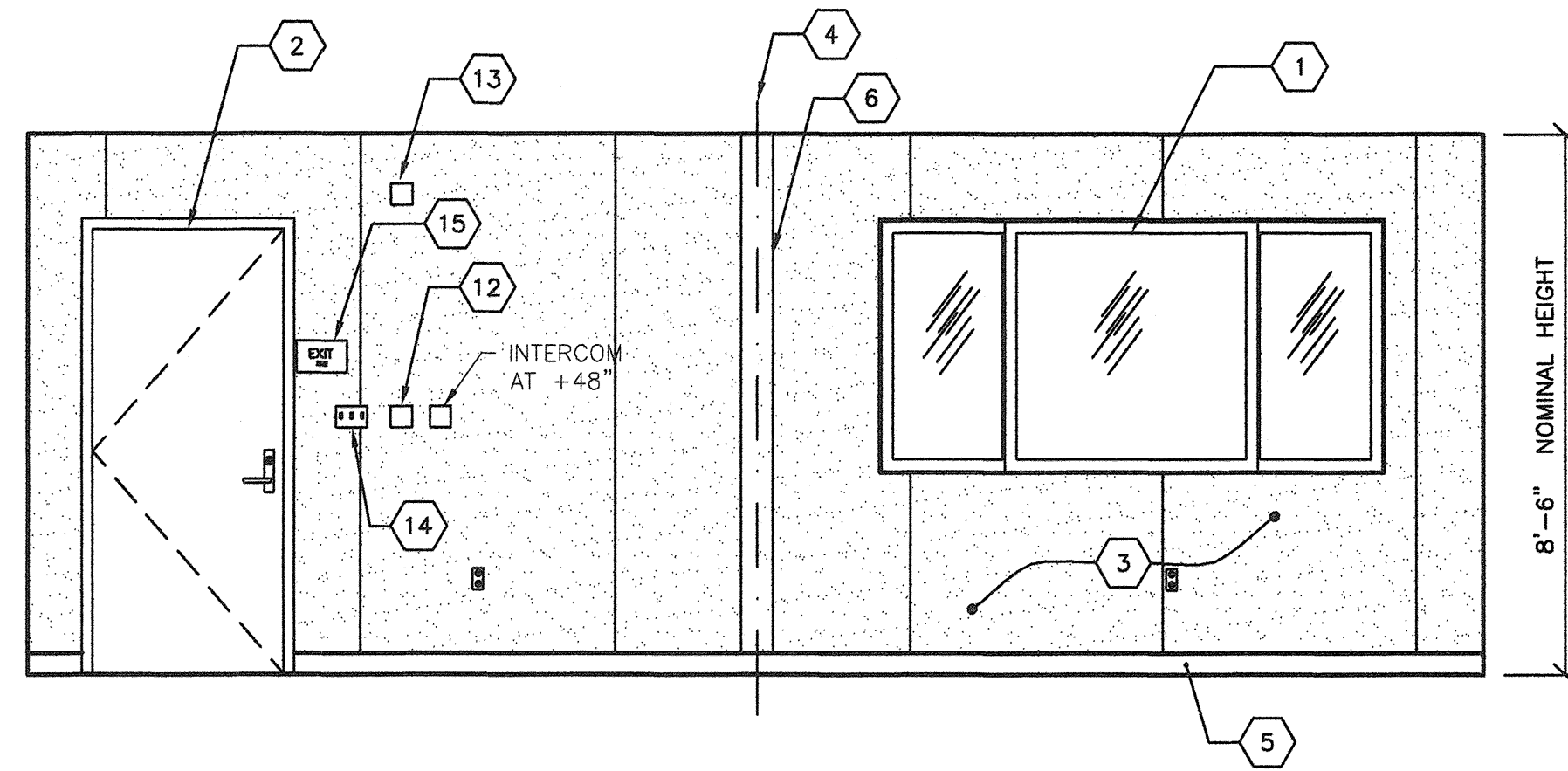


IDENTIFICATION STAMP
 DIV. OF THE STATE ARCHITECT
 OFFICE OF REGULATION SERVICES

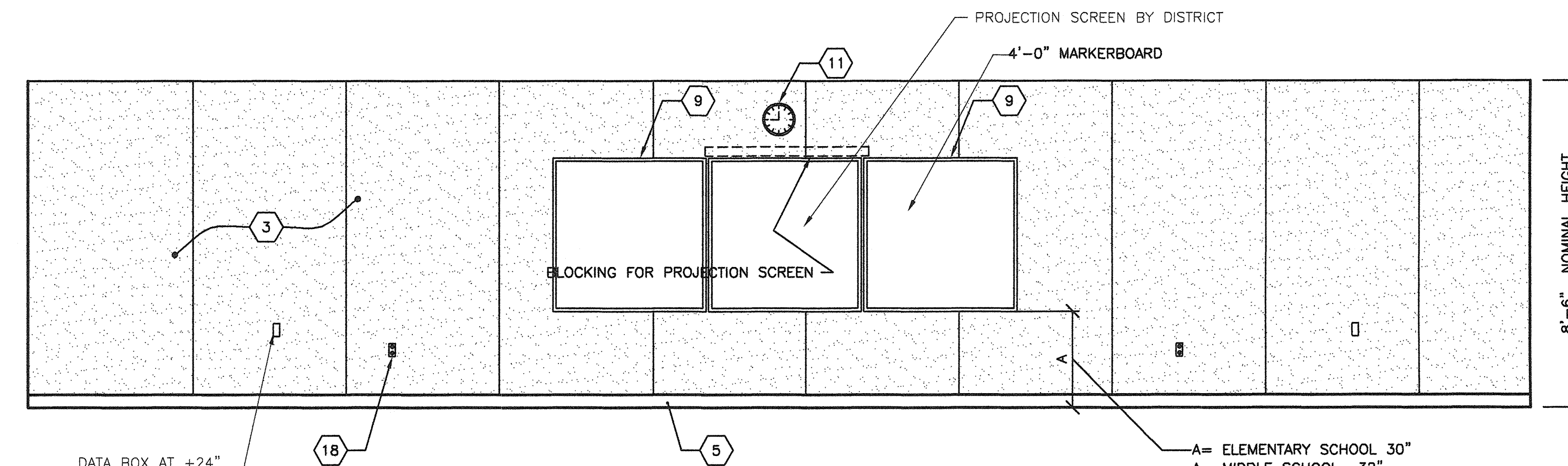
03-112985
 AC: FLS SS
 DATE: SEP 24 2009

PROJECT No.
A1

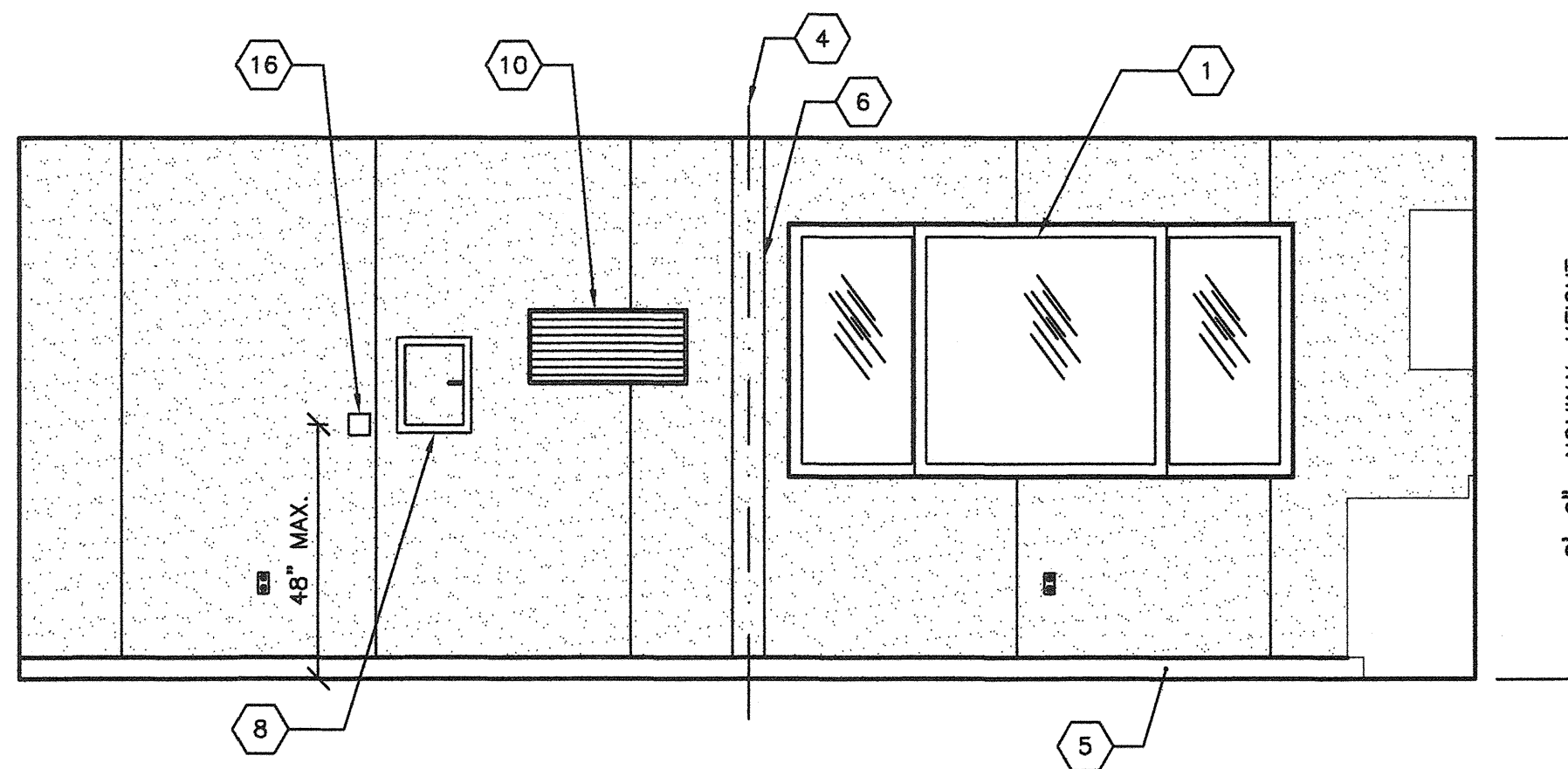
THESE DRAWINGS AND SPECIFICATIONS ARE THE PROPERTY OF AMERICAN MODULAR SYSTEMS AND ARE NOT TO BE REPRODUCED, CHANGED OR COPIED IN ANY FORM OR MANNER, NOR ARE THEY TO BE ASSIGNED TO ANY THIRD PARTY WITHOUT THE WRITTEN AUTHORIZATION OF AMERICAN MODULAR SYSTEMS.



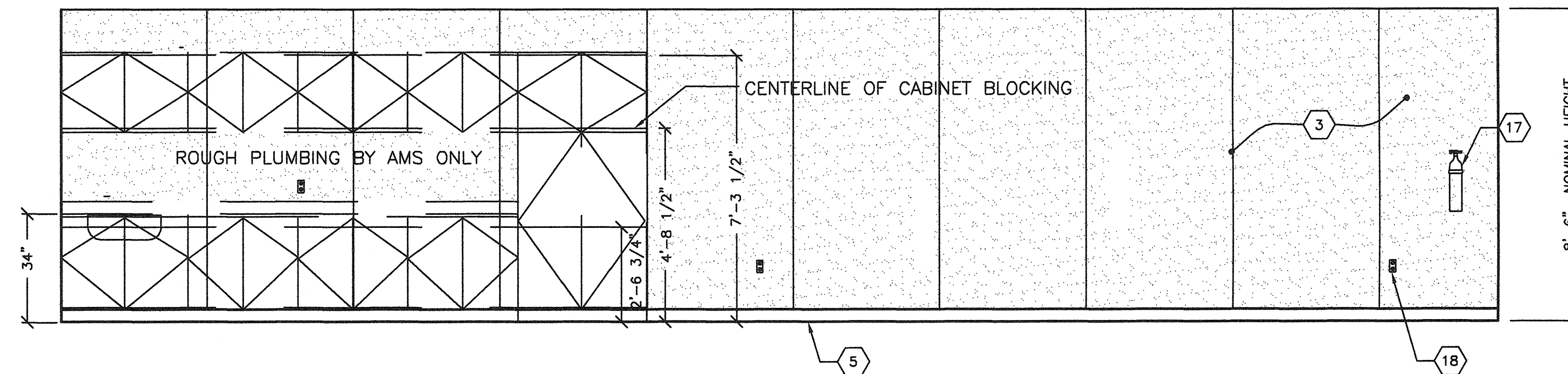
1 TYPICAL CLASSROOM FRONT END WALL ELEVATION
A3 3/8"=1'-0"



2 TYPICAL CLASSROOM SIDE WALL ELEVATION
A3 3/8"=1'-0"



3 TYPICAL CLASSROOM REAR END WALL ELEVATION
A3 3/8"=1'-0"



4 TYPICAL CLASSROOM SIDE WALL ELEVATION
A3 3/8"=1'-0"

- KEY NOTES -**
- 1 WINDOW TYP.
 - 2 TYP EXTERIOR DOOR
 - 3 VINYL WRAPPED TACKABLE WALLS
 - 4 TYP MOD LINE
 - 5 TOP SET BASE
 - 6 TRIM PIECE (FIELD INSTALL)
 - 7 NOT USED
 - 8 ELECTRICAL PANEL
 - 9 (2) 4'x4' MARKER BOARDS
 - 10 HVAC GRILL
 - 11 CLOCK
 - 12 PULL STATION J-BOX 48" A.F.F SEE ELECTRICAL SHEETS
 - 13 HORN/STROBE J-BOX SEE ELECTRICAL SHEETS
 - 14 LIGHT SWITCH SEE ELECTRICAL SHEETS
 - 15 EXIT TACTILE SIGN PER DETAIL 10/AD (BY OWNER)
 - 16 THERMOSTAT 48" A.F.F SEE MECHANICAL SHEETS
 - 17 FIRE EXTINGUISHER TOP OF BRACKET @ +48" AFF PROTRUSION MAX 4" FROM WALL IF FIRE EXTINGUISHER IS ABOVE 27" A.F.F
 - 18 TYP DUPLEX OUTLET (SEE ELECTRICAL SHEETS) SPACED @ 12" o.c MIN. PER C.E.C

ROOM FINISHES SCHEDULE		FINISHES							REMARKS
ROOM NUMBER	ROOM NAME	FLOOR	BASE	WALLS				CEILING	
#	CLASSROOM	A	D	F	F	F	F	J	
								8'-6"	

DOOR SCHEDULE		DOORS				FRAMES		REMARKS	
DOOR NO.	FRAME OPENING SIZE	MATERIAL	DOOR FIRE TYPE	HARDWARE SET NO.	QUANTITY	MATERIAL	HEAD DETAIL		
1	3'-0" x 7'-0"	HM	F1	A	1	STL	4/A4A	9/A4A	F1

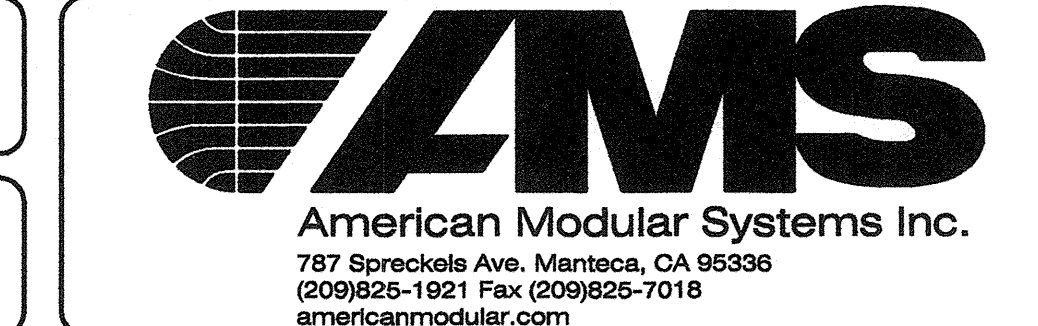
WINDOW SCHEDULE								
WINDOW NO.	AMT.	TYPE	WIDTH	HEIGHT	FINISH	GLASS TYPE	U-FACTOR	SHGC
1	2	SLIDER	8'-0"	4'-0"	BRONZE	SOLAR GRAY	0.780	0.430

REVISIONS		
NO	DATE	DESCRIPTION

DATE: 08/13/09
SCALE: NOTED
DRAWN BY: RS
SERIAL NO.:

CUSTOMER: BAKERSFIELD CITY SCHOOLS
MUNSEY AND FREMONT ELEMENTARY SCHOOL

2:12 PITCHED ROOF 24' x 40' RELOCATABLE BUILDINGS
TYPICAL INTERIOR ELEVATIONS



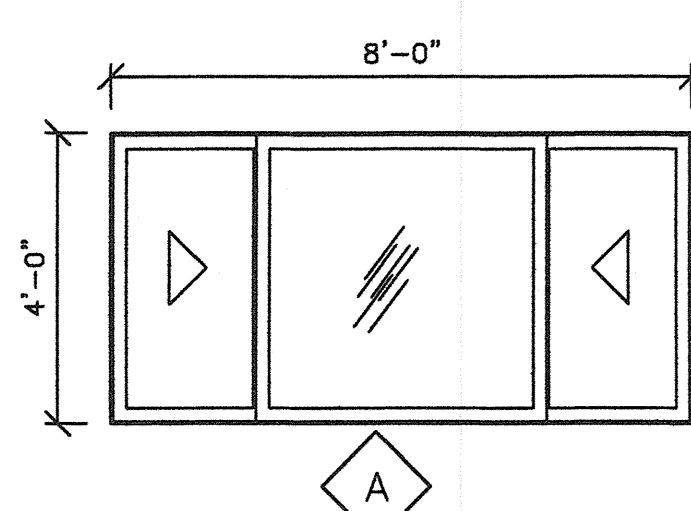
APPROVALS:



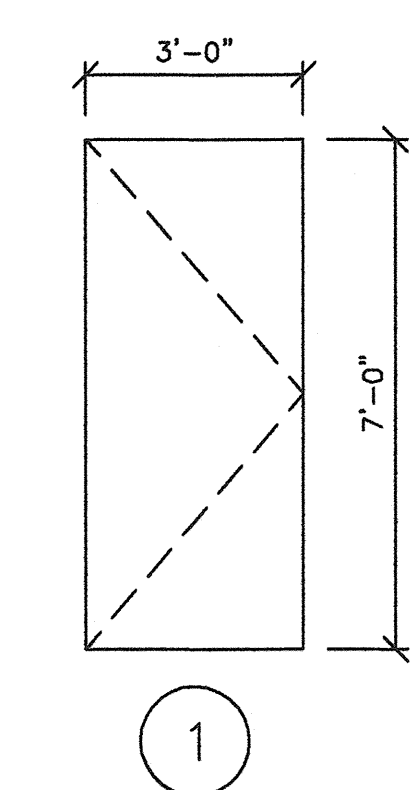
IDENTIFICATION STAMP
DIV. OF THE STATE ARCHITECT
OFFICE OF REGULATION SERVICES

03-112985
AC, FL, SS
DATE: SEP 24 2009

PROJECT No.
A3



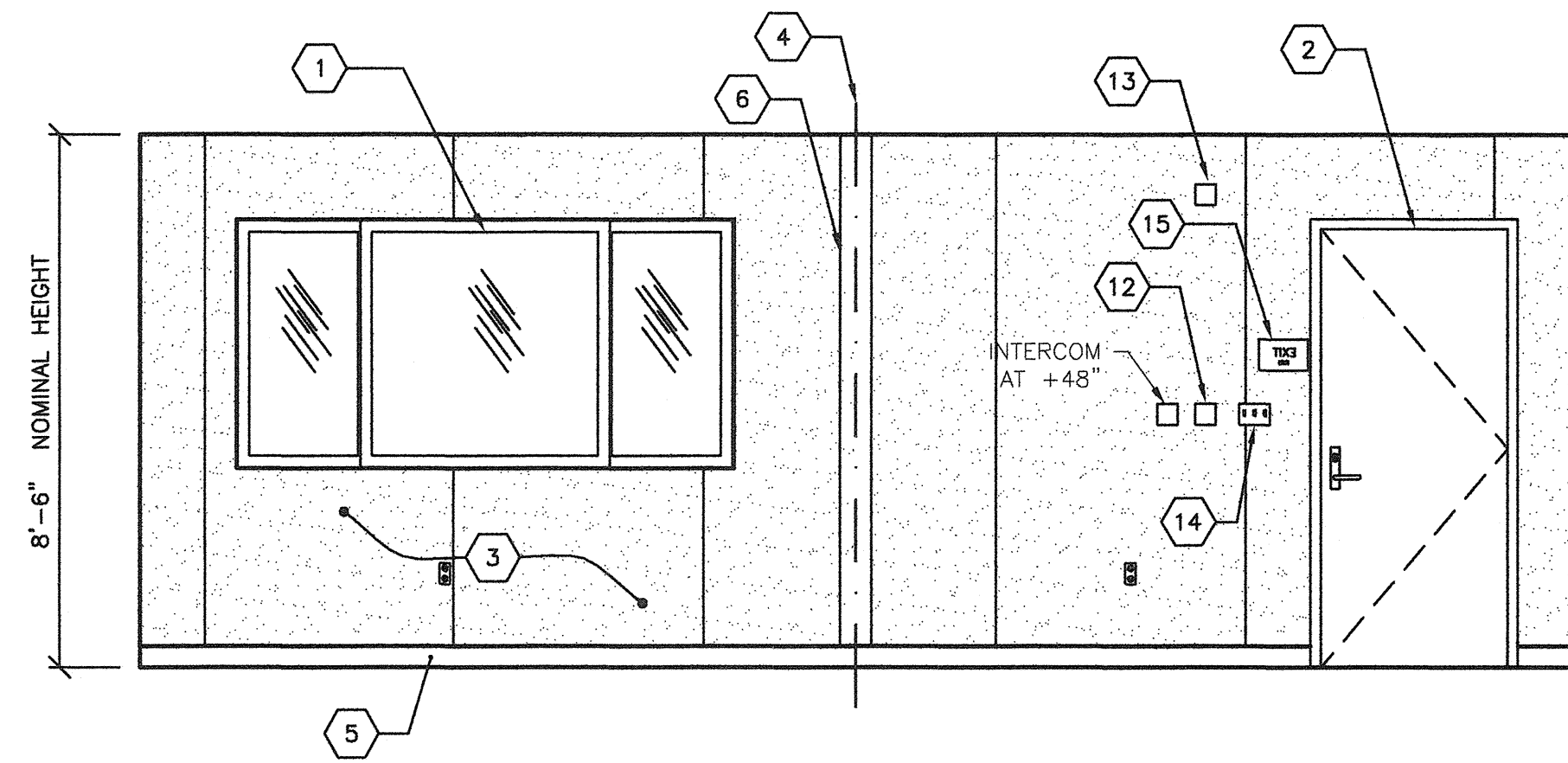
6 WINDOW TYPES
A3 3/8"=1'-0"



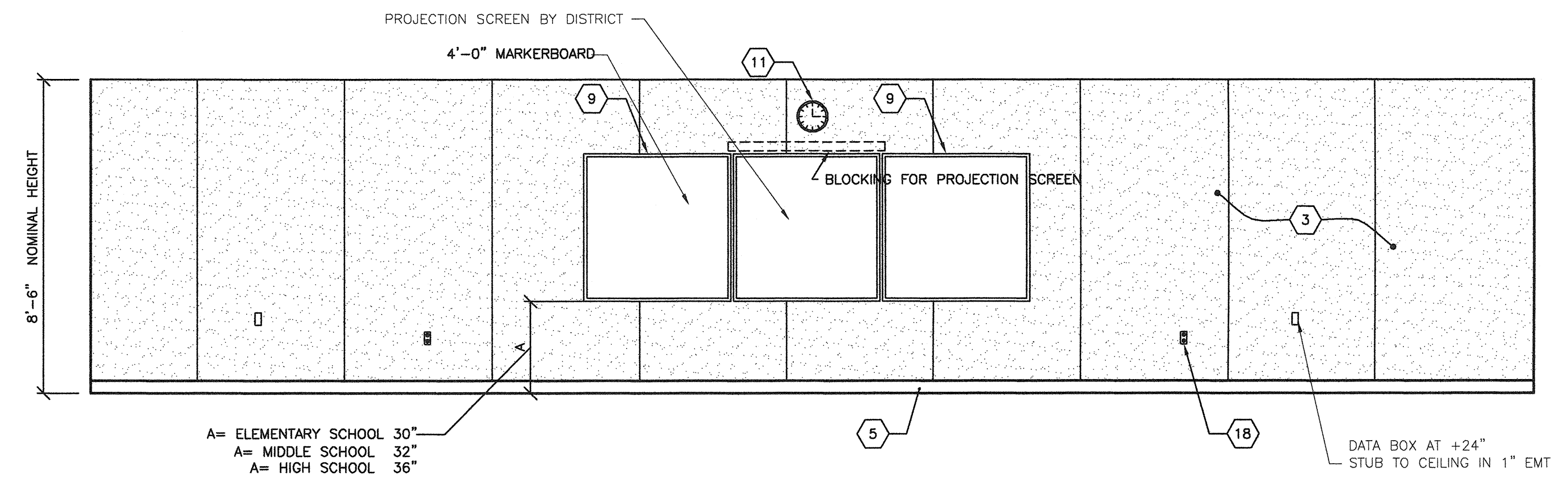
5 DOOR AND DOOR FRAME TYPES
A3 3/8"=1'-0"

THESE DRAWINGS AND SPECIFICATIONS ARE THE PROPERTY OF AMERICAN MODULAR SYSTEMS AND ARE NOT TO BE REPRODUCED, CHANGED OR COPIED IN ANY FORM OR MANNER, NOR ARE THEY TO BE ASSIGNED TO ANY THIRD PARTY WITHOUT THE WRITTEN AUTHORIZATION OF AMERICAN MODULAR SYSTEMS.

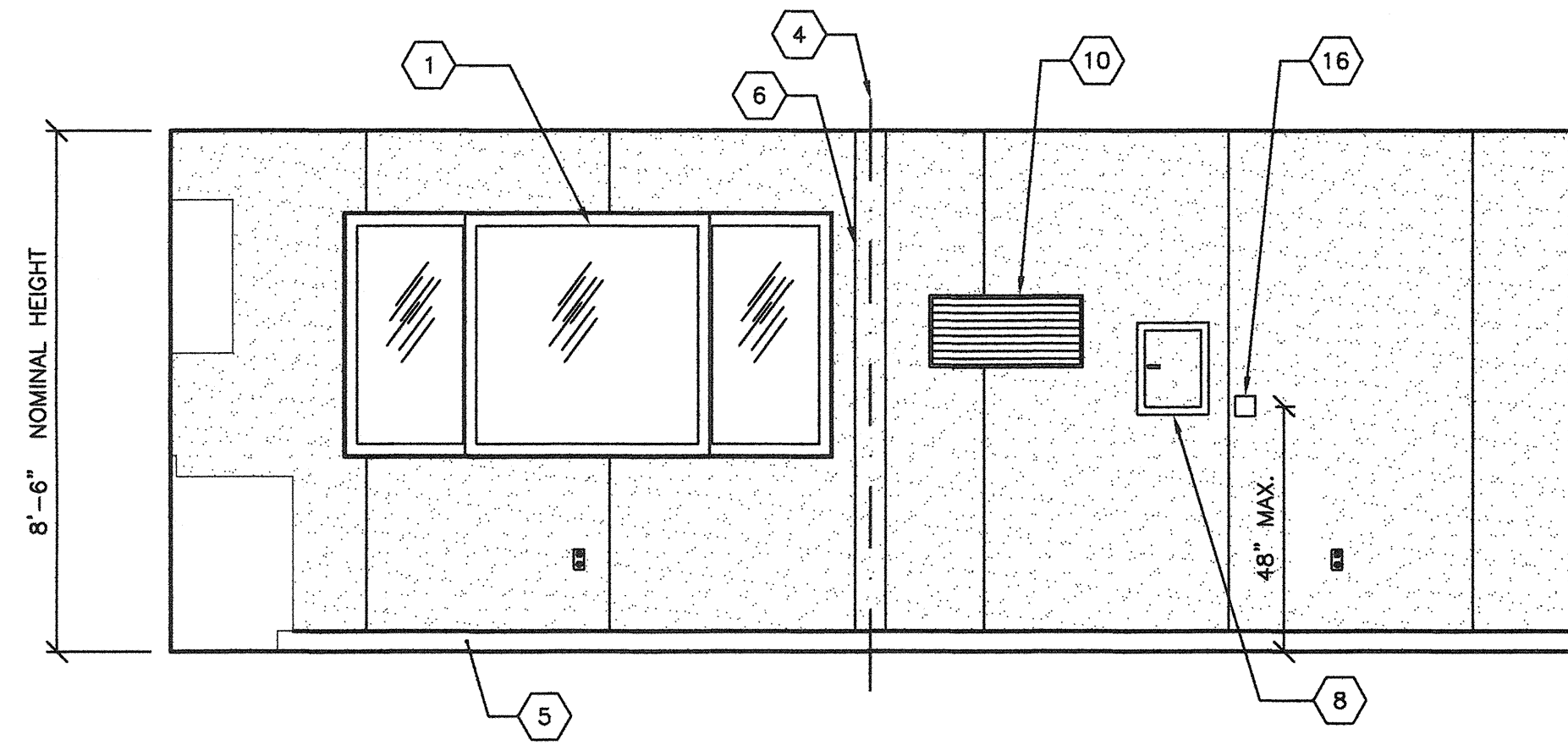
BASED ON PC# 02-109695



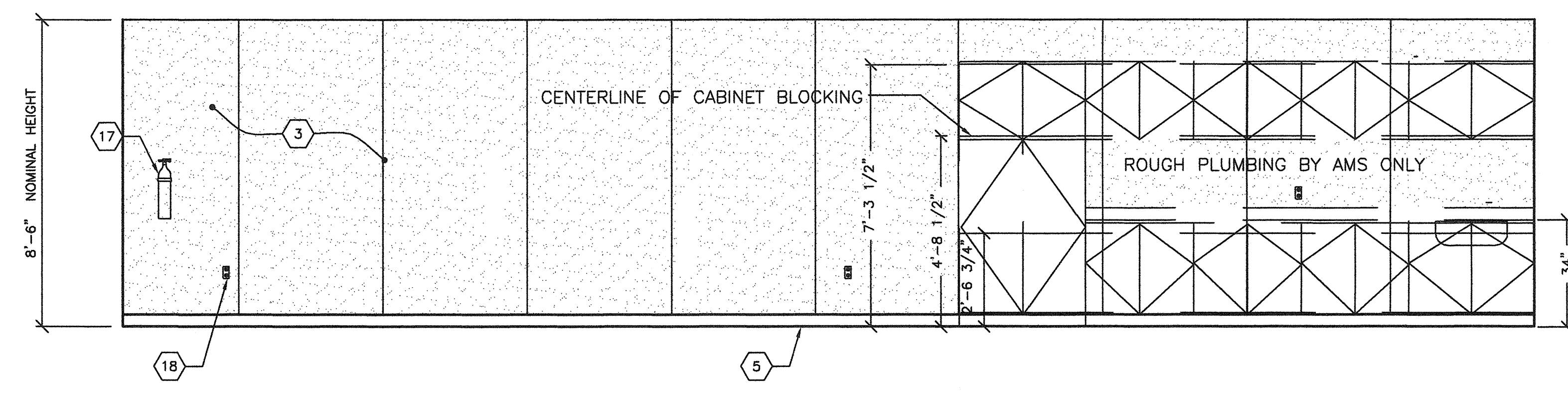
1 TYPICAL CLASSROOM FRONT END WALL ELEVATION
A3A 3/8"=1'-0"



2 TYPICAL CLASSROOM SIDE WALL ELEVATION
A3A 3/8"=1'-0"



3 TYPICAL CLASSROOM REAR END WALL ELEVATION
A3A 3/8"=1'-0"



4 TYPICAL CLASSROOM SIDE WALL ELEVATION
A3A 3/8"=1'-0"

BASED ON PC# 02-109695

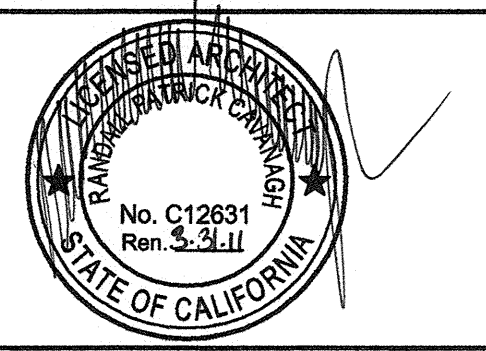
REVISIONS		
NO	DATE	DESCRIPTION
1		
2		
3		
4		

DATE: 08/13/09
SCALE: NOTED
DRAWN BY: RS
SERIAL NO.:

CUSTOMER:
BAKERSFIELD CITY SCHOOLS
MUNSEY AND FREMONT ELEMENTARY SCHOOL

2:12 PITCHED ROOF 24' x 40' RELOCATABLE BUILDINGS
TYPICAL INTERIOR ELEVATIONS

APPROVALS:

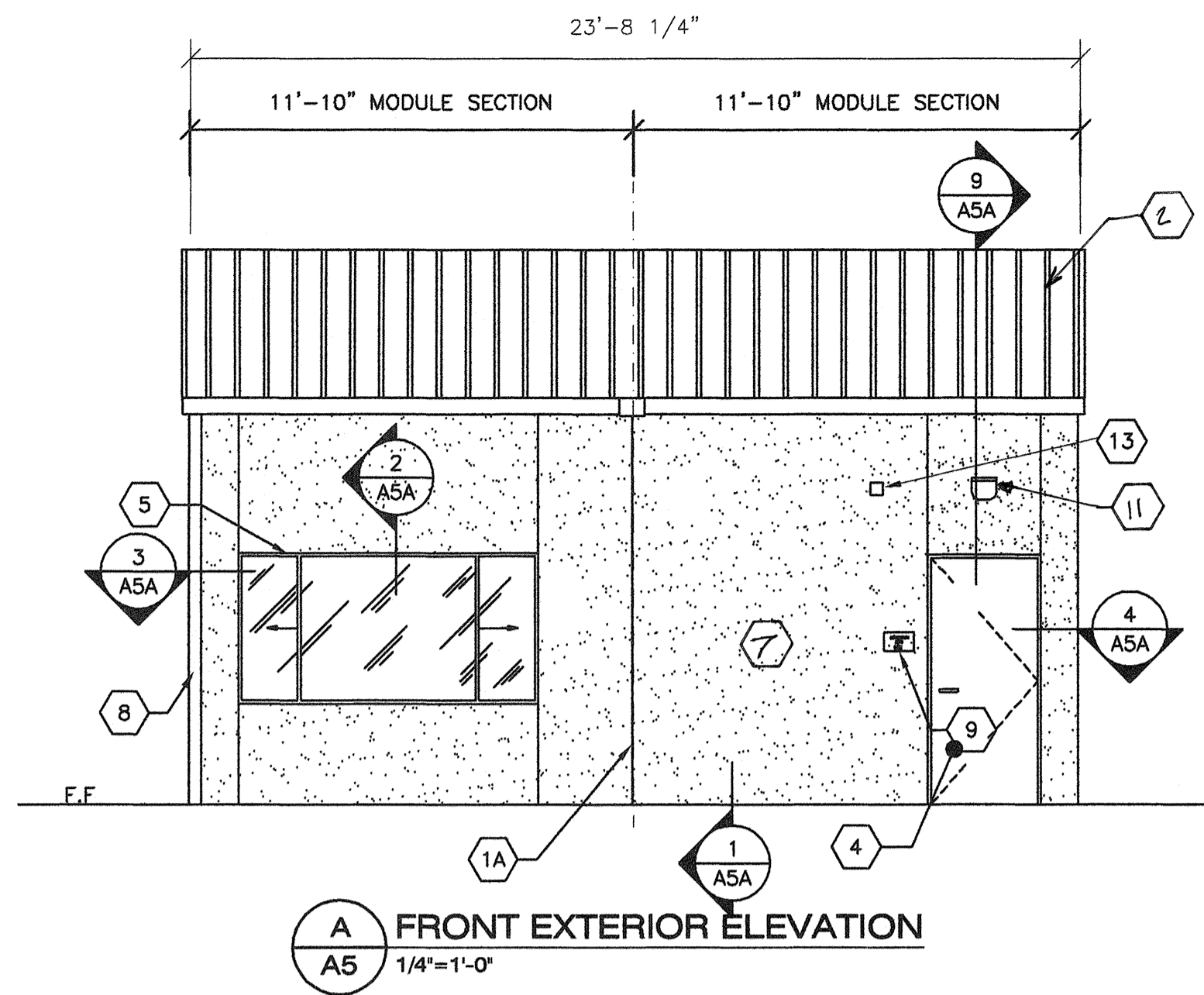


IDENTIFICATION STAMP
DIV. OF THE STATE ARCHITECT
OFFICE OF REGULATION SERVICES

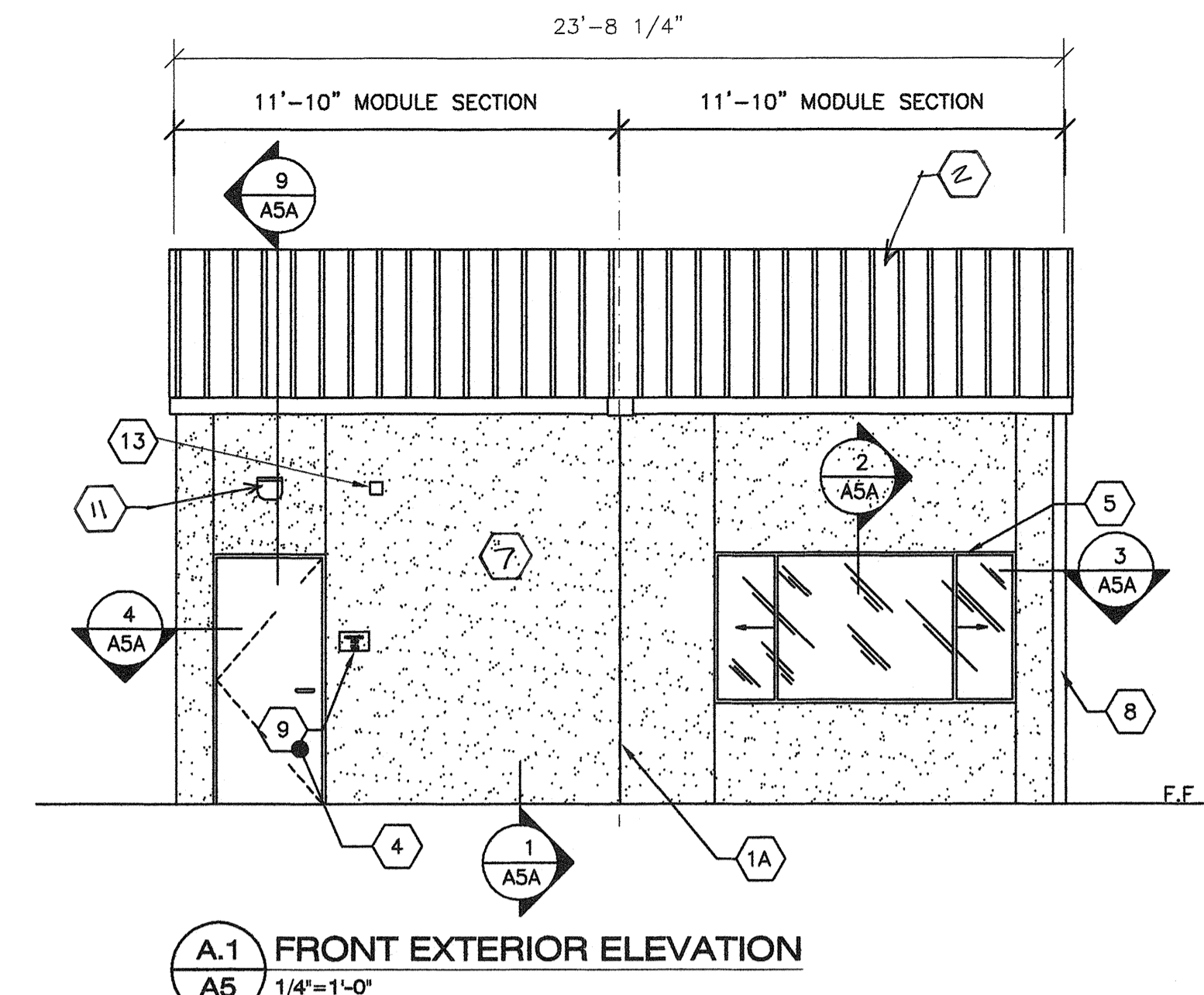
03-112985
AC, FLS, SS
DATE SEP 24 2009

PROJECT No.
A3A

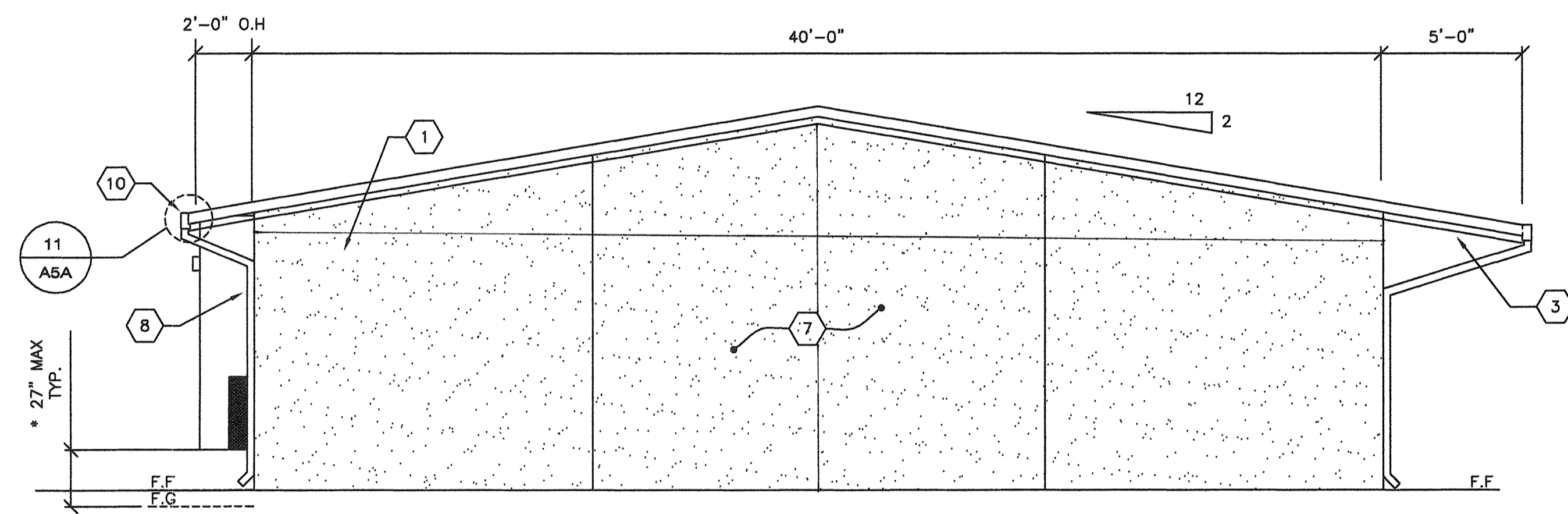
THESE DRAWINGS AND SPECIFICATIONS ARE THE PROPERTY OF AMERICAN MODULAR SYSTEMS AND ARE NOT TO BE REPRODUCED, CHANGED OR COPIED IN ANY FORM OR MANNER, NOR ARE THEY TO BE ASSIGNED TO ANY THIRD PARTY WITHOUT THE WRITTEN AUTHORIZATION OF AMERICAN MODULAR SYSTEMS.



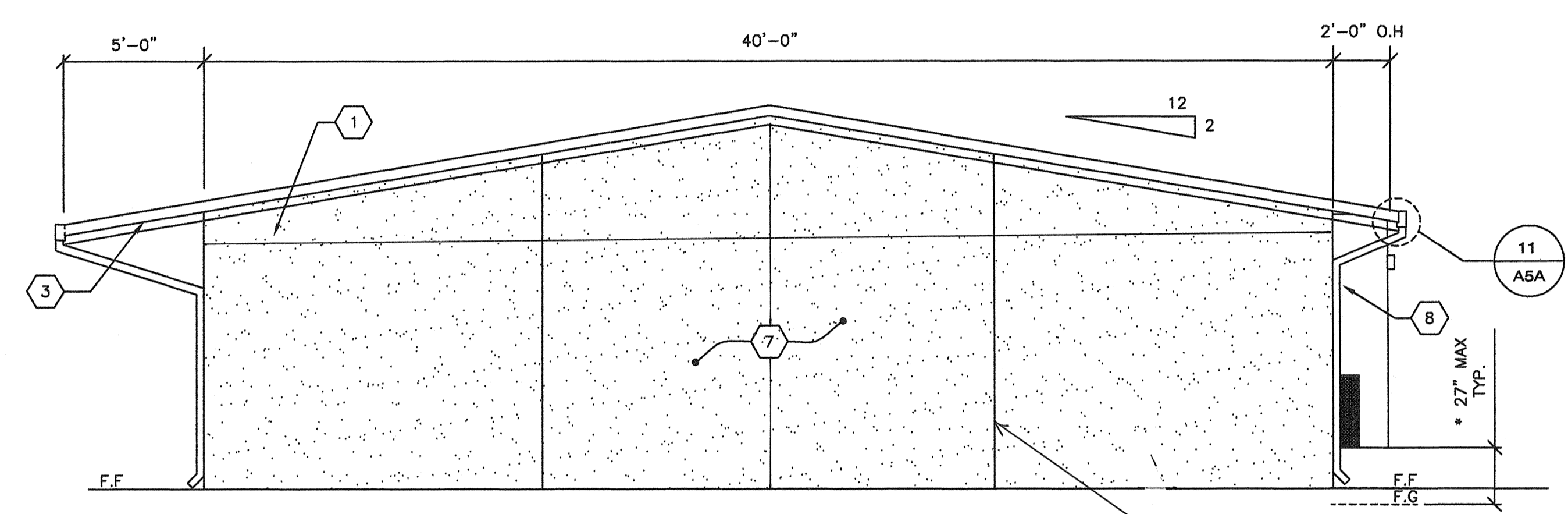
A FRONT EXTERIOR ELEVATION
A5 1/4"=1'-0"



A.1 FRONT EXTERIOR ELEVATION
A5 1/4"=1'-0"

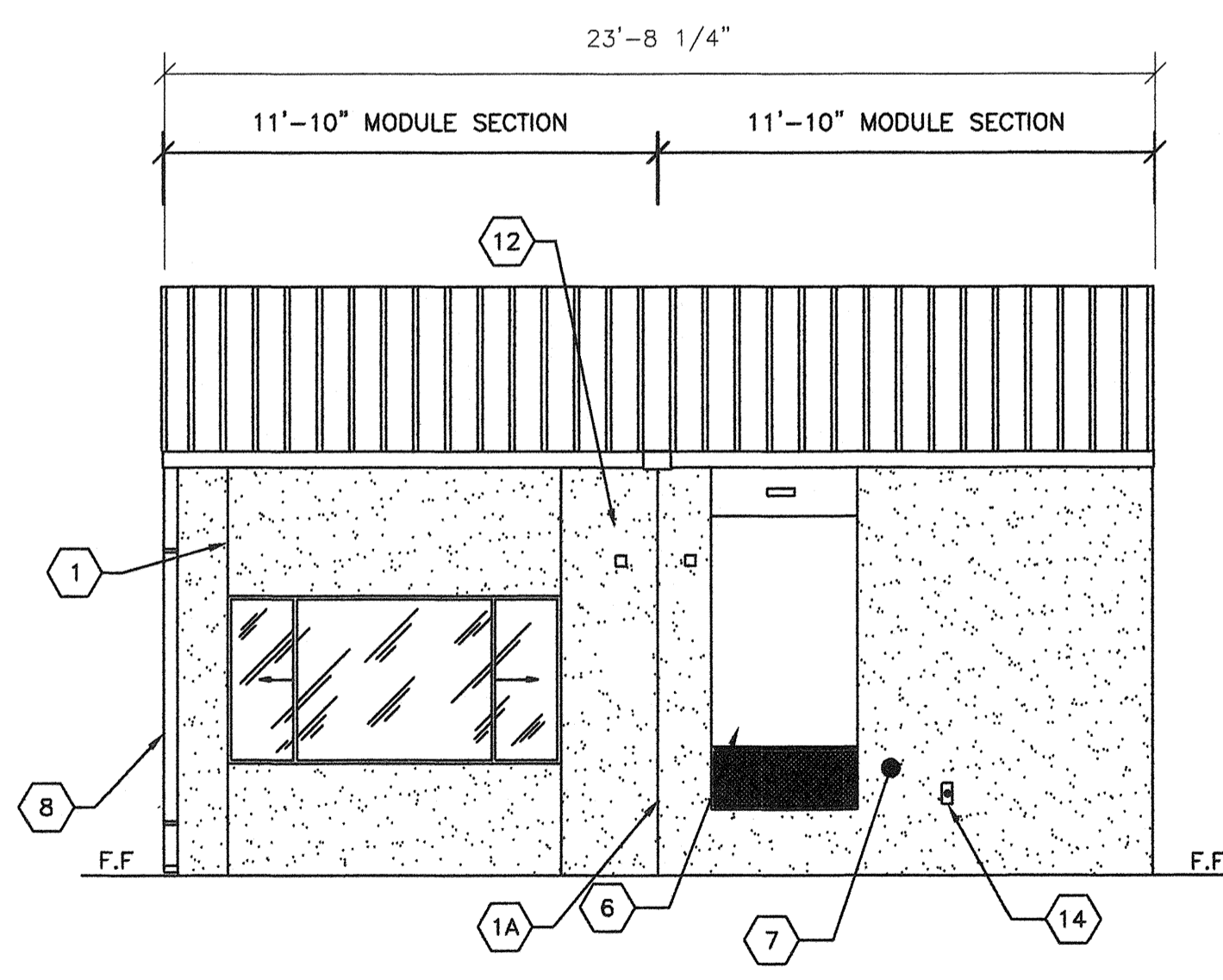


C SIDE EXTERIOR ELEVATION
A5 1/4"=1'-0"

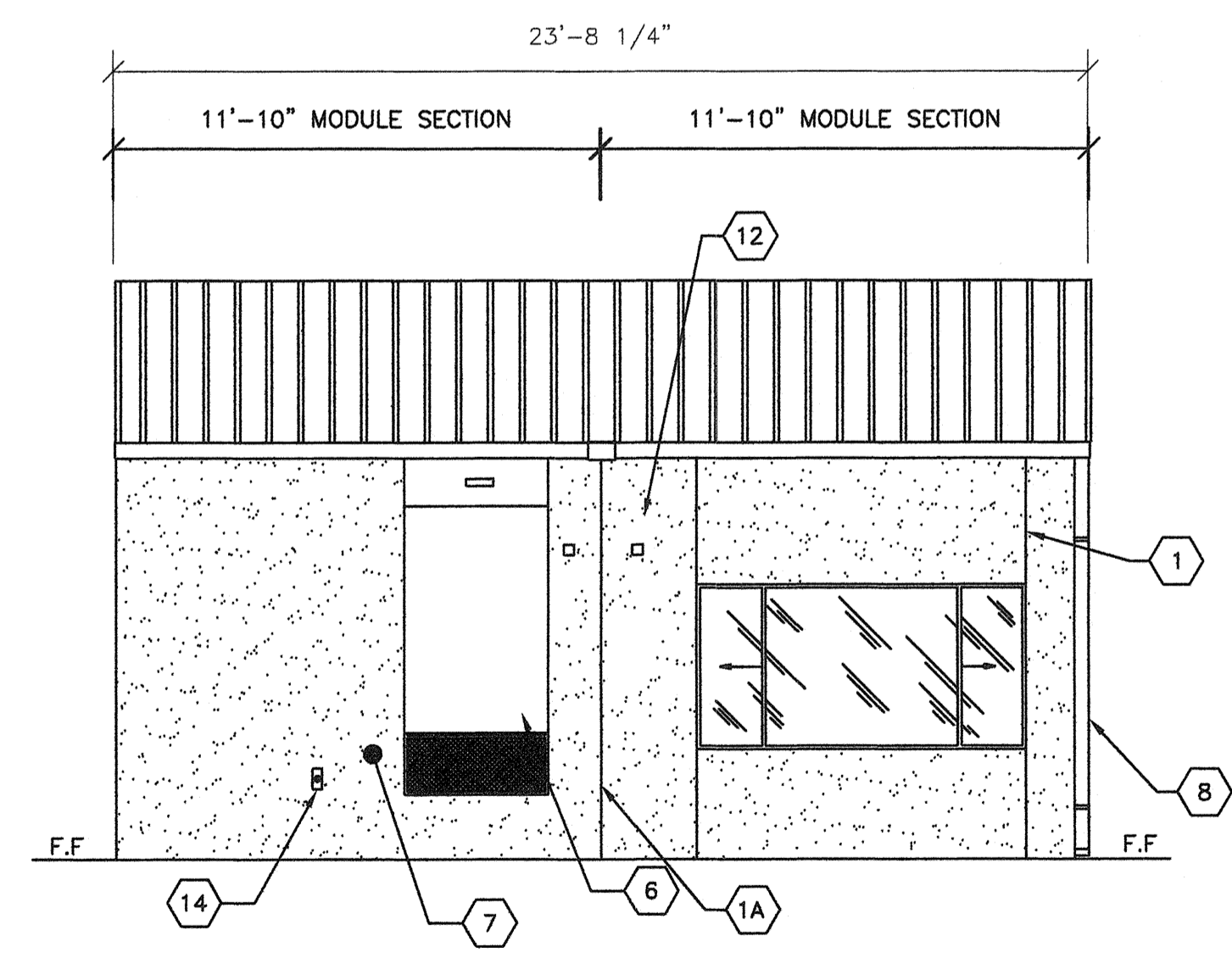


D SIDE EXTERIOR ELEVATION
A5 1/4"=1'-0"

* IF EXCEEDS 27" PROTECTIVE GUARDS SHALL BE INSTALLED (BY OWNER)



B REAR EXTERIOR ELEVATION
A5 1/4"=1'-0"



B.1 REAR EXTERIOR ELEVATION
A5 1/4"=1'-0"

- SHEET NOTES -**
- 1 CONTROL JOINT (LOCATIONS MAY VARY)
 - 1A 16 GA. FLASHING TRIM @ MODLINES TYP.
 - 2 STANDING SEAM METAL ROOFING
 - 3 OVERHANG
 - 4 TYPICAL EXTERIOR DOOR
 - 5 WINDOW SEE SPEC'S
 - 6 HVAC UNIT TYP.
 - 7 ACRYLIC TEXTURED FINISH OVER HARDI-BOARD
 - 8 DOWNSPOUT (QUANTITY & LOCATION MAY VARY)
 - 9 ROOM ID AND ISA SIGNAGE (BY OWNER) TYP REFER TO DETAILS 5/AD AND 9/AD
 - 10 GUTTER
 - 11 EXTERIOR LIGHT FIXTURE TYP
 - 12 MODULAR IDENTIFICATION TAG, +90" ABOVE F.F.
 - 13 FIRE ALARM HORN (REFER TO E1)
 - 14 WP/G.F.C.I TYP. @ HVAC UNITS SEE ELECTRICAL SHEETS.
- R FOR RAMP DETAILS REFER TO SHEET S6R

REVISIONS		
NO	DATE	DESCRIPTION

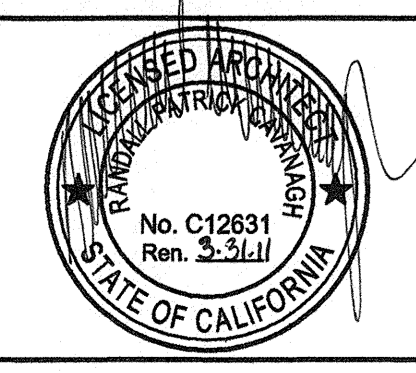
DATE: 08/13/09
SCALE: NOTED
DRAWN BY: RS
SERIAL NO.:

CUSTOMER:
BAKERSFIELD SCHOOL DISTRICT
MUNSEY ELEMENTARY SCHOOL

2:12 PITCHED ROOF 24' x 40' RELOCATABLE BUILDINGS
TYPICAL EXTERIOR ELEVATIONS (SYNTHETIC STUCCO)



APPROVALS:

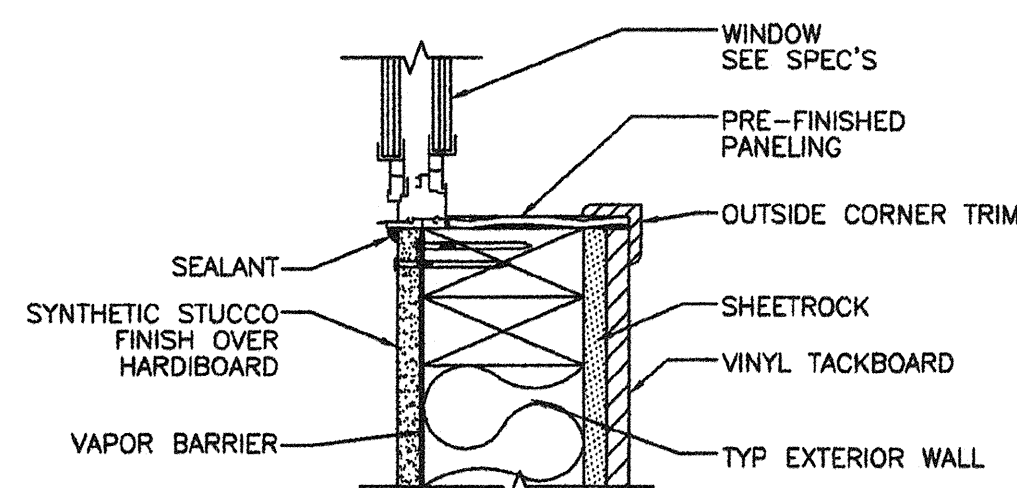


IDENTIFICATION STAMP
DIV. OF THE STATE ARCHITECT
OFFICE OF REGULATION SERVICES
03-112985
AC. FLS. SS
DATE: SEP 24 2009

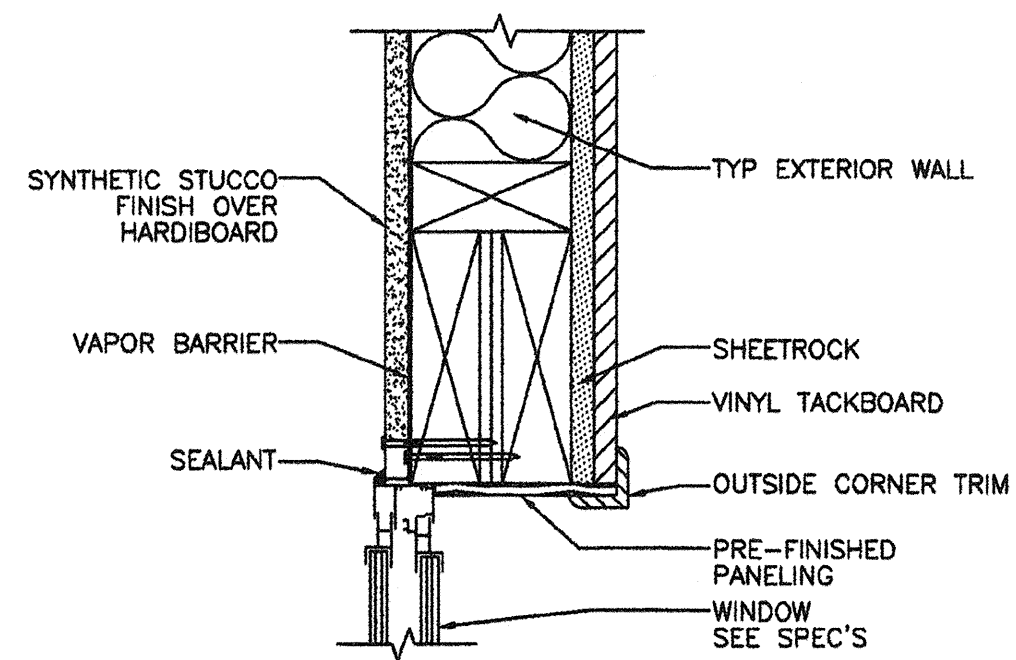
PROJECT No.
A5

BASED PC 02-109695

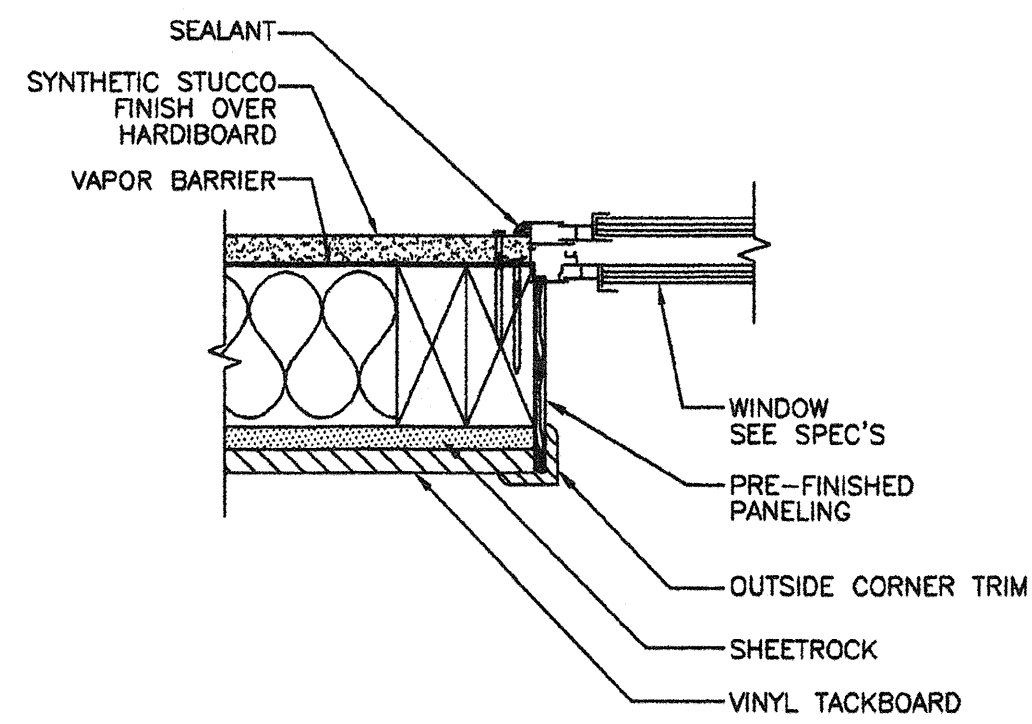
THESE DRAWINGS AND SPECIFICATIONS ARE THE PROPERTY OF AMERICAN MODULAR SYSTEMS AND ARE NOT TO BE REPRODUCED, CHANGED OR COPIED IN ANY FORM OR MANNER, NOR ARE THEY TO BE ASSIGNED TO ANY THIRD PARTY WITHOUT THE WRITTEN AUTHORIZATION OF AMERICAN MODULAR SYSTEMS.



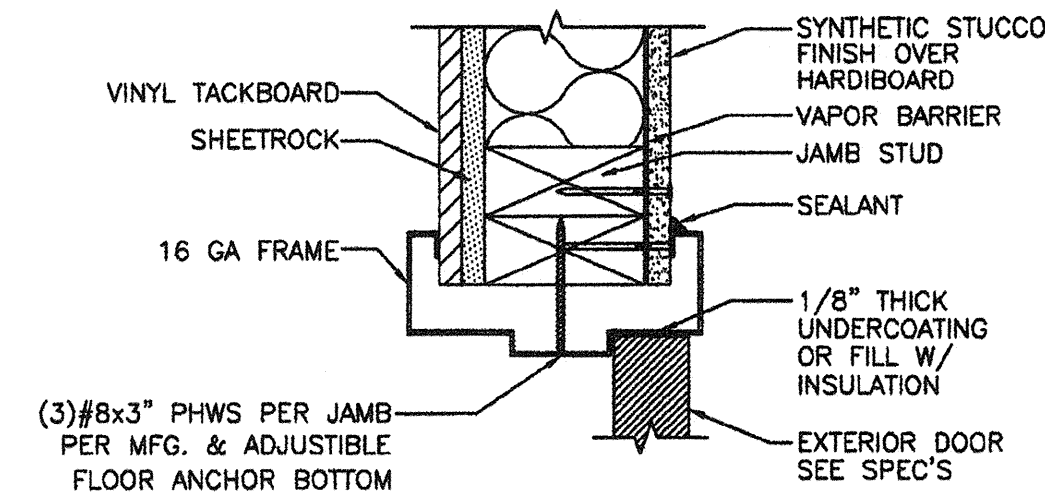
1 TYP WINDOW SILL DETAIL
A5A 3'-1-0"



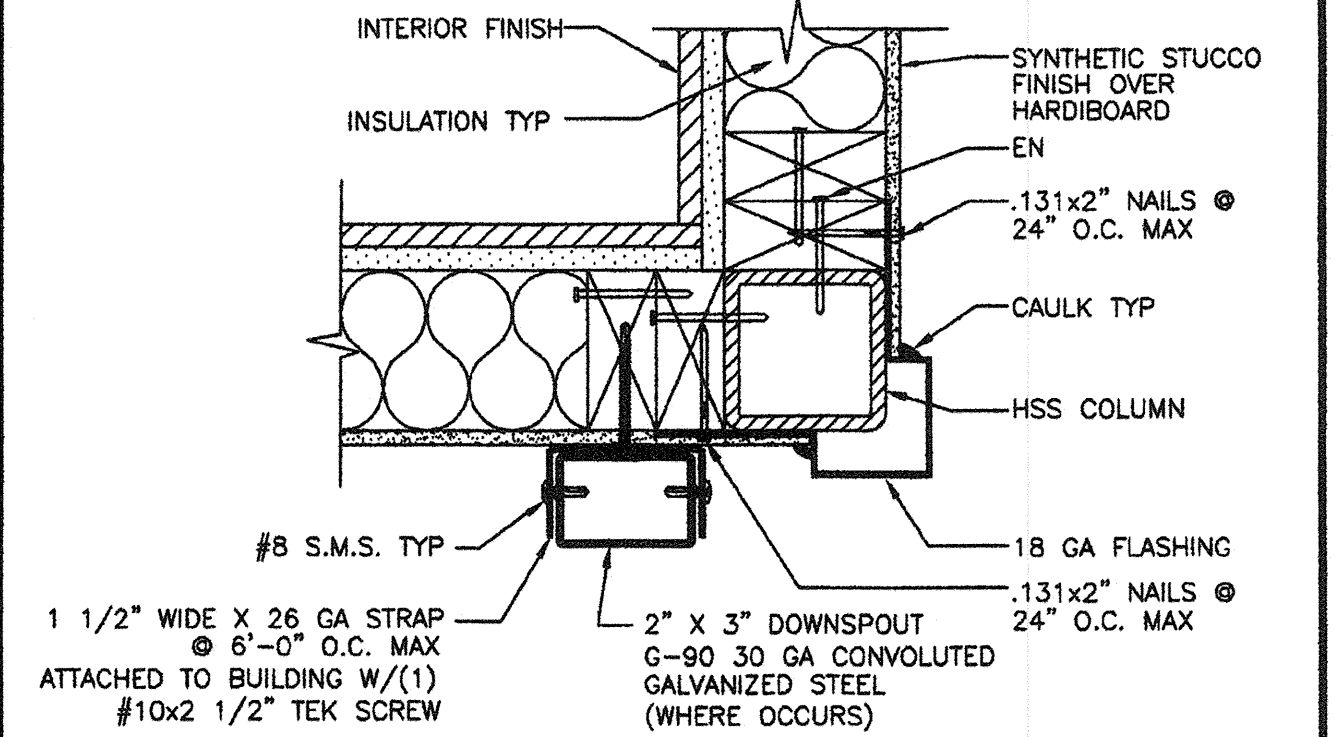
2 TYP WINDOW HEADER DETAIL
A5A 3'-1-0"



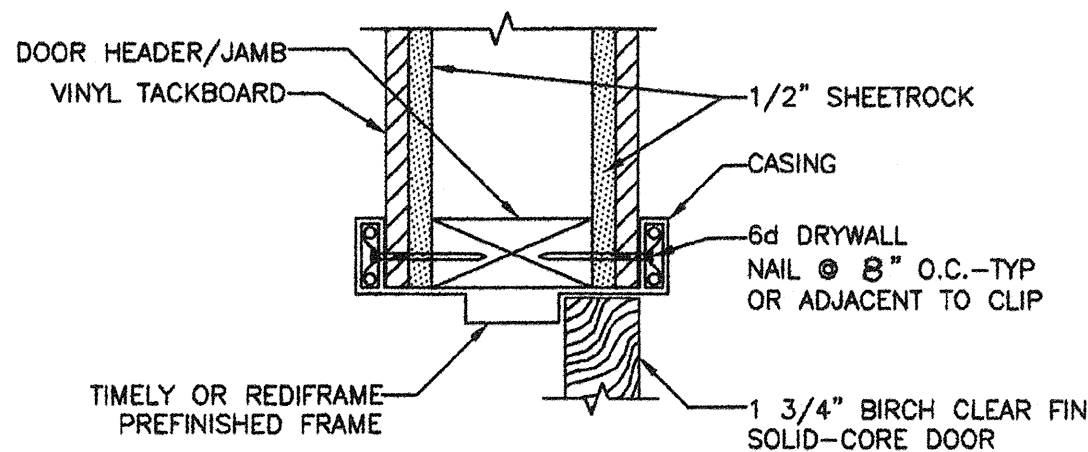
3 TYP WINDOW JAMB DETAIL
A5A 3'-1-0"



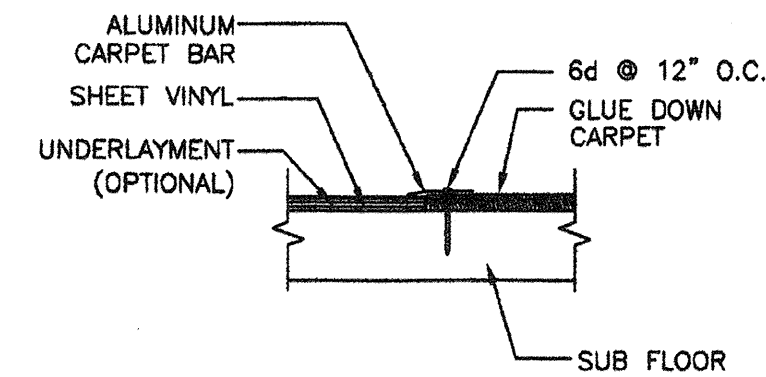
4 TYP DOOR JAMB DETAIL
A5A 3'-1-0"



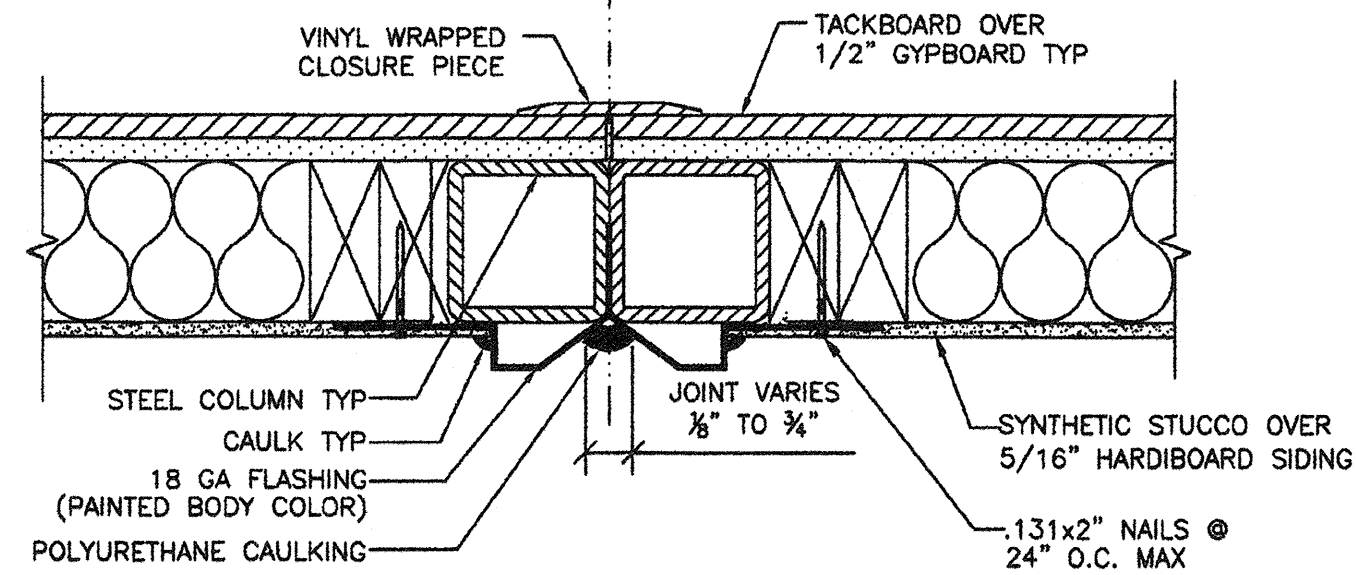
5 DOWNSPOUT ATTACHMENT DETAIL
A5A 3'-1-0"



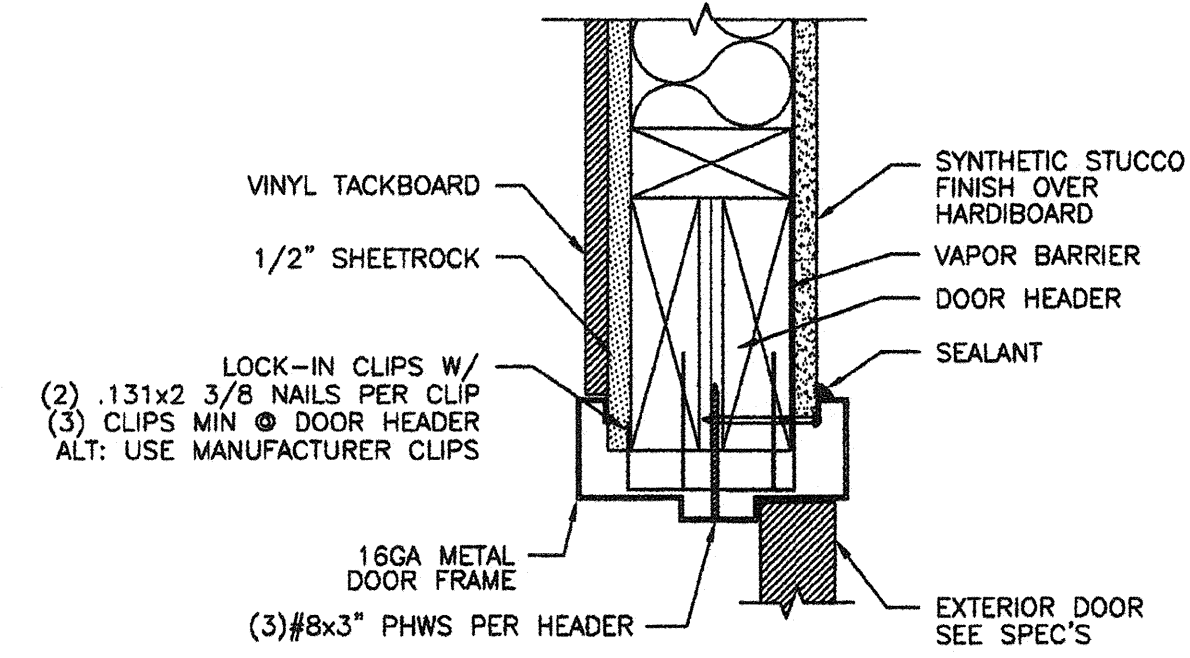
6 TYP INTERIOR DOOR HEADER DETAIL
A5A 3'-1-0"



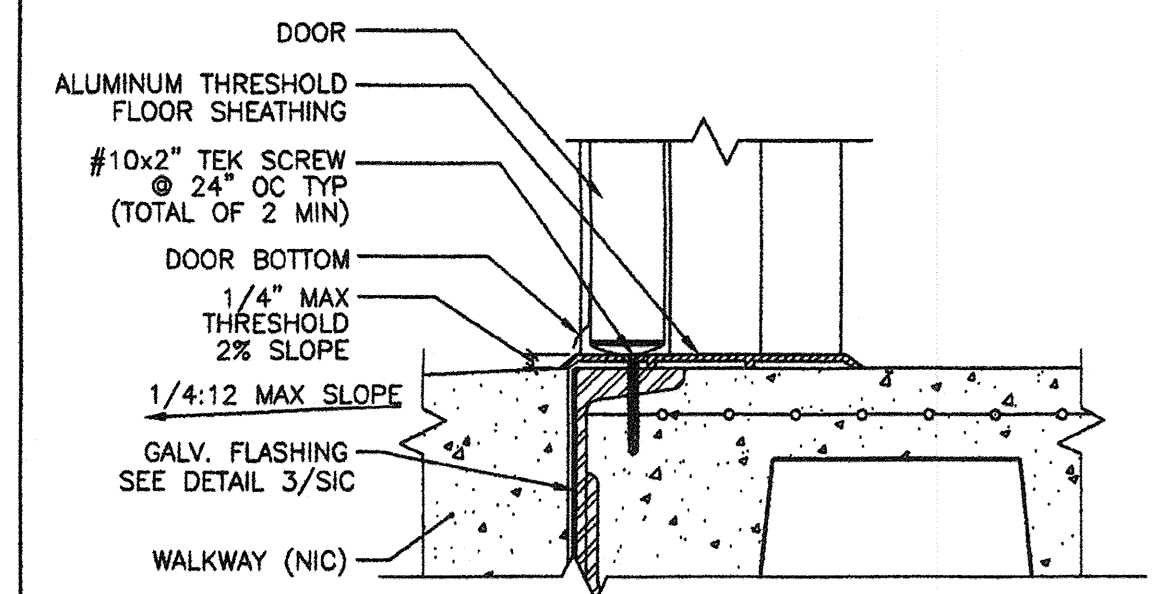
7 FLOORING DETAIL
A5A 3'-1-0"



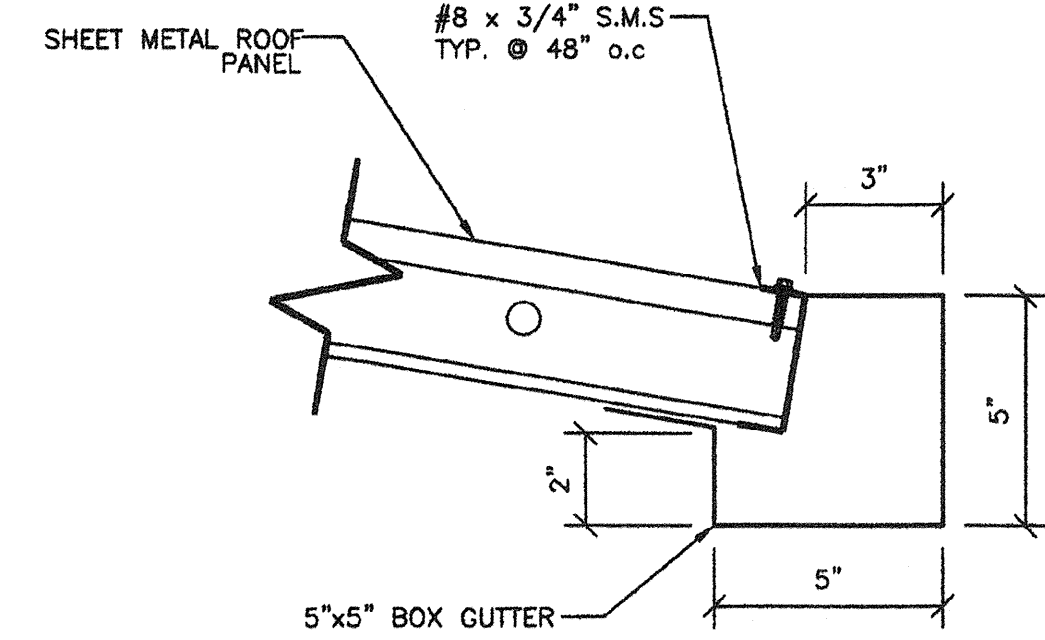
8 TYP MODLINE CLOSURE DETAIL
A5A 3'-1-0"



9 TYP DOOR HEADER DETAIL
A5A 3'-1-0"



10 THRESHOLD DETAIL
A5A 1 1/2'-1-0"



11 TYP GUTTER ATTACHMENT DETAIL
A5A 3'-1-0"

IDENTIFICATION STAMP
DIV. OF THE STATE ARCHITECT
112985
AC 02-109695
DATE 3/27/09

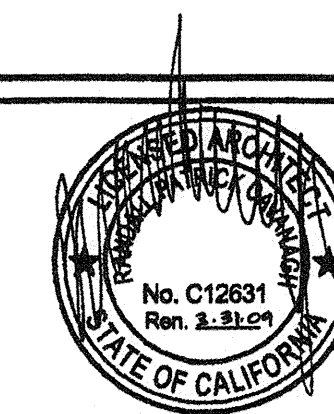
REVISIONS		
NO	DATE	DESCRIPTION

DATE: 2/6/08
SCALE: NOTED
DRAWN BY: DM
SERIAL NO.:

CUSTOMER:
2:12 PITCHED ROOF 24' x 40' THRU 120' x 40' RELOCATABLE CLASSROOMS
ARCHITECTURAL DETAILS (SYNTHETIC STUCCO OPTION)

AMS
American Modular Systems Inc.
787 Spreckels Ave, Manteca, CA 95338
(209)925-1821 Fax: (209)925-7018
americanmodular.com

APPROVALS:



IDENTIFICATION STAMP
DIV. OF THE STATE ARCHITECT
OFFICE OF REGULATION SERVICES
PC 02-109695
AC 02-109695
DATE 3/27/09

PROJECT No.
A5A

THESE DRAWINGS AND SPECIFICATIONS ARE THE PROPERTY OF AMERICAN MODULAR SYSTEMS, INC. AND ARE NOT TO BE REPRODUCED, CHANGED OR COPIED IN ANY FORM OR MANNER, NOR ARE THEY TO BE ASSIGNED TO ANY THIRD PARTY WITHOUT THE WRITTEN AUTHORIZATION OF AMERICAN MODULAR SYSTEMS, INC.