

# SYMBOLS

- CONDUIT EXISTING
- CONDUIT CONCEALED IN WALL OR CEILING
- CONDUIT CONCEALED UNDER FLOOR OR BELOW GRADE
- CONDUIT STUBBED OUT AND CAPPED
- CONDUIT TURNED UP
- CONDUIT TURNED DOWN
- /// HATCH MARKS INDICATE NO. OF #12 WIRES IN CODE SIZED CONDUIT (3) MAX. IN 1/2" C., (5) MAX. IN 3/4" C., (8) MAX. IN 1" C., NO MARKS = 2#12
- A-3 HOME RUN: LETTER INDICATES PANEL, NUMBER(S) INDICATES CIRCUIT(S).
- SAWCUT
- GROUND CONNECTION
- DISTRIBUTION SWITCHBOARD OR PANEL
- PANEL, BRANCH CIRCUIT TYPE, SURFACE AND FLUSH
- SIGNAL TERMINAL CABINET, SURFACE & FLUSH
- FLUORESCENT FIXTURE
- OUTLET DATA: BAR INDICATES WALL MOUNT, LETTER INDICATES SWITCH CONTROL, NO. INDICATES CIRCUIT.
- SURFACE FIXTURE ON FLUSH OUTLET.
- RECESSED FIXTURE WITH JUNCTION BOX FOR THRU WIRING
- ⊗ EXIT LIGHT WITH ARROWS AS SHOWN ON PLANS, WALL AND CEILING MOUNT.
- ⊗ LOW LEVEL EXIT SIGN, +6" AFF, +4" FROM DOOR JAMB
- ⊗ LIGHT FIXTURE DESIGNATION, LETTER INDICATES TYPE, NO. INDICATES WATTAGE. SEE FIXTURE SCHEDULE.
- ⊗ MECHANICAL EQUIPMENT DESIGNATION. SEE MECHANICAL DRAWINGS.
- ⊗ SPECIAL RECEPTACLE - SEE PLAN
- ⊗ METER
- ⊗ FLUSH FLOOR RECEPTACLE
- ⊗ RECEPTACLE, DUPLEX, 15A, 125V, NEMA 5-15R +18" U.N.O.
- ⊗ DUPLEX RECEPTACLE MTD. ABOVE BACKSPLASH
- ⊗ DUPLEX RECEPTACLE W/LOWER HALF SWITCHED
- ⊗ GFI GROUND FAULT CIRCUIT INTERRUPTING RECEPTACLE
- ⊗ DOUBLE DUPLEX RECEPTACLE
- ⊗ CEILING RECEPTACLE
- ⊗ RECEPTACLE, DUPLEX, 20A, 125V, NEMA 5-20R +18" U.N.O.
- ⊗ JUNCTION BOX 4" SQUARE, 1-1/2" DEEP U.N.O.
- ⊗ THERMOSTAT F.B.O. +48"
- ⊗ MOTOR, NO. INDICATES HORSEPOWER
- ⊗ CLOCK OUTLET +7"-6" U.N.O.
- ⊗ DISCONNECT SWITCH, NON-FUSED
- ⊗ DISCONNECT SWITCH FUSED HORSEPOWER RATED OR SIZED AS NOTED
- ⊗ COMBINATION MAGNETIC STARTER WITH DISCONNECT SWITCH AND FUSES
- ⊗ MAGNETIC MOTOR STARTER W/OVERLOADS IN EACH PHASE
- ⊗ RECESSED SPEAKER
- ⊗ PUSHBUTTON
- ⊗ PHOTOCELL
- ⊗ SMOKE DETECTOR
- ⊗ TELEPHONE/COMPUTER/DATA OUTLET, TWO GANG BOX W/1 GANG COVERPLATE & GROMMETTED OPENING +18" U.N.O.
- ⊗ CABLE TV OUTLET +18" U.N.O.
- ⊗ MOTION SENSOR
- ⊗ EXISTING SWITCH
- S SINGLE POLE SWITCH
- S<sup>2</sup> DOUBLE POLE SWITCH
- S<sup>3</sup> THREE WAY SWITCH
- S<sup>2</sup> SWITCH W/PILOT LT.
- S<sup>M</sup> MANUAL MOTOR STARTER
- FACP FIRE ALARM CONTROL PANEL
- GFI GROUND FAULT CIRCUIT INTERRUPTING
- LST LABOR SAVING TANDEM
- MLO MAIN LUGS ONLY
- W/ WITH
- C.O. CONDUIT ONLY
- W.P. WEATHERPROOF
- F.B.O. FURNISHED BY OTHERS, INSTALL & CONNECT
- U.N.O. UNLESS NOTED OTHERWISE
- N.E.C. NATIONAL ELECTRICAL CODE
- N.I.C. NOT IN CONTRACT
- (E) EXISTING
- (N) NEW
- (R) REMOVE
- (RL) RELOCATE
- S/M SURFACE MOUNT
- U/G UNDERGROUND
- CWP COLD WATER PIPE
- AFF ABOVE FINISHED FLOOR
- HACR HEATING AND AIR CONDITIONING RATED CIRCUIT BREAKER
- N.L. NIGHT LIGHT

NOTE: NOT ALL SYMBOLS SHOWN ARE USED ON THIS PROJECT.

JMPE/JOB#04082/DATE:09-09-09 AC/CH

Ownership of Documents  
This document, the ideas and designs incorporated herein, as an instrument of Professional Service is the property of Integrated Designs by SOMAM, Inc. and is not to be used, in whole or in part for any other project without written authorization.  
© COPYRIGHT 2009

Integrated designs by SOMAM, Inc.  
ARCHITECTURE - INTERIOR DESIGN - CONSTRUCTION MANAGEMENT  
Fresno, California 93710  
601 N. Fresno, Suite 130 Fresno, CA 93710  
Phone (559) 436-0861 Fax (559) 436-0867  
www.integrateddesigns.com www.integrateddesigns.com

Revision: \_\_\_\_\_  
Revision Description: \_\_\_\_\_  
Rev. Date: \_\_\_\_\_

Issue Date: \_\_\_\_\_  
Date: 05/02/06  
Designer: \_\_\_\_\_  
DR: \_\_\_\_\_  
PC: \_\_\_\_\_

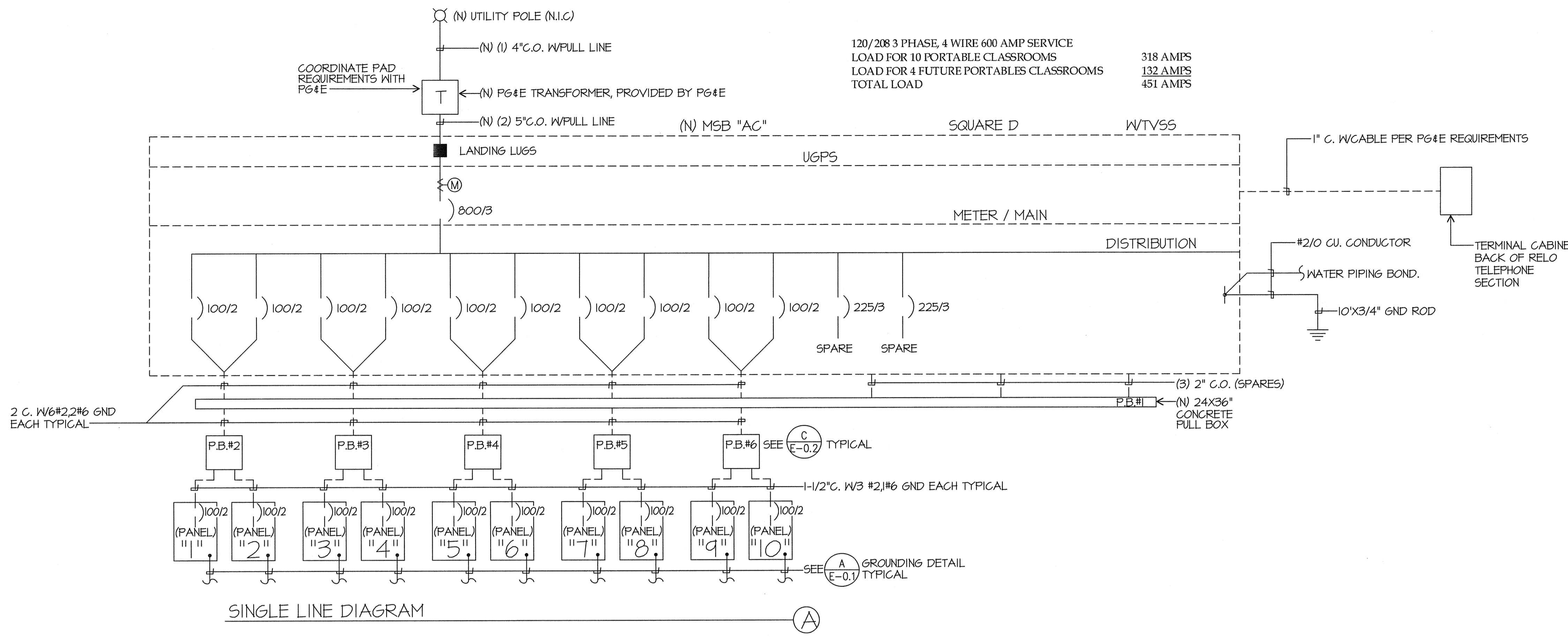
DSA Identification Stamp:  
IDENTIFICATION STAMP  
DIV. OF THE STATE ARCHITECT  
05-172985  
AC FLS SS  
DATE: 05/17/06

Stamp(s): \_\_\_\_\_

Job No.: **3832**

Sheet No.: **E-0**

Release: \_\_\_\_\_  
CURTIS MCNALLY



SINGLE LINE DIAGRAM

NOTES:  
1. FOR OUTDOOR PANEL MOUNTING, CONCRETE PAD SHALL BE 6" WIDER THAN PANEL HOUSING. TOP OF SLAB SHALL BE 2" ABOVE ADJACENT GRADE.

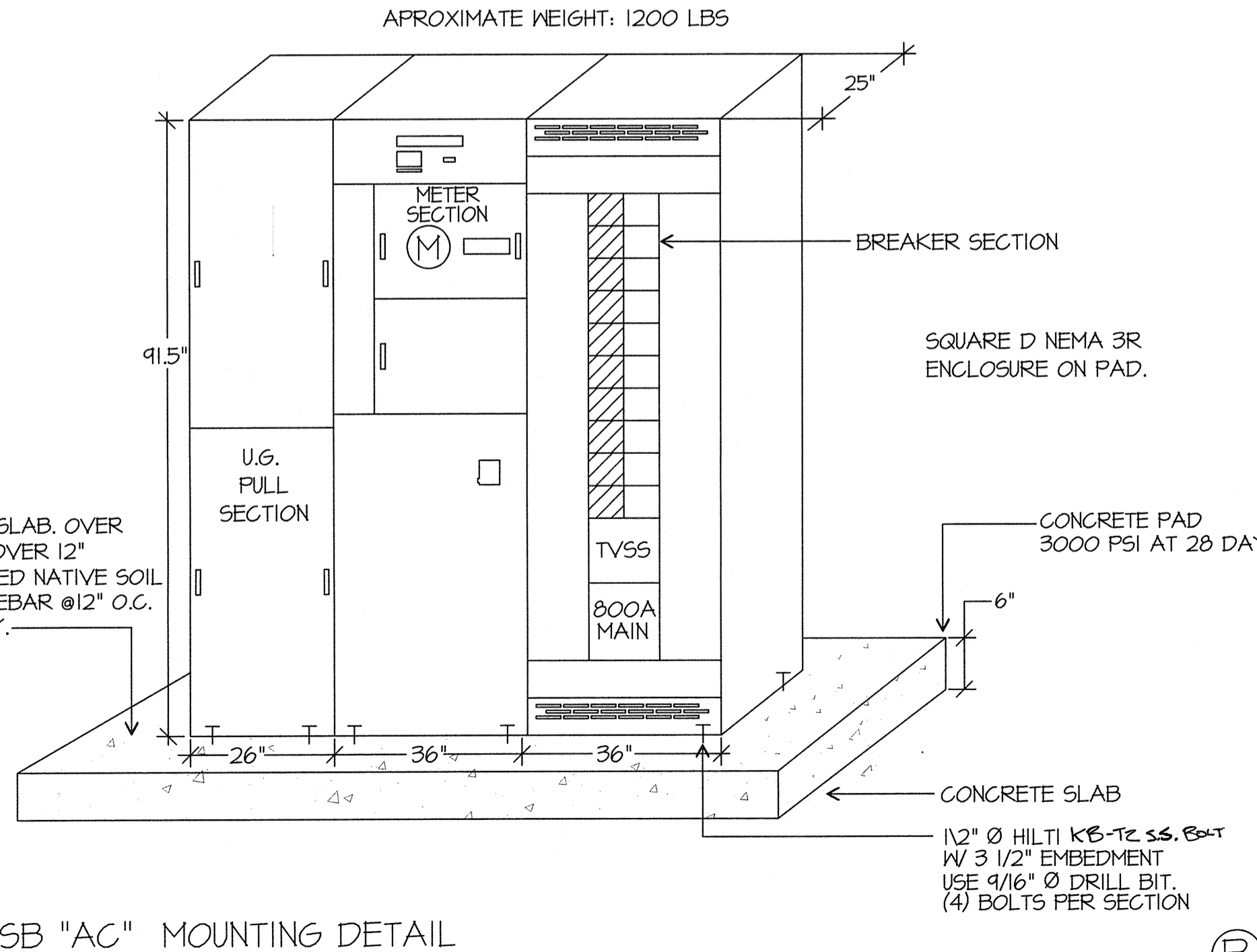
## CODE REQUIREMENTS

PERFORMANCE OF THE WORK OF THIS CONTRACT SHALL CONFORM TO THE REQUIREMENTS OF APPLICABLE GOVERNING CODES AND ORDINANCES INCLUDING THE FOLLOWING:

2007	BUILDING STANDARDS ADMINISTRATIVE CODE, PART 1, TITLE 24, C.C.R.
2007	CALIFORNIA BUILDING CODE, PART 2, TITLE 24 C.C.R. (2006 IBC, VOLUMES 1-3 WITH CALIFORNIA AMENDMENTS)
2007	CALIFORNIA ELECTRICAL CODE, PART 3, TITLE 24 C.C.R. (2005 N.E.C. WITH CALIFORNIA AMENDMENTS)
2007	CALIFORNIA MECHANICAL CODE, PART 4, TITLE 24 C.C.R. (2006 U.M.C. WITH CALIFORNIA AMENDMENTS)
2007	CALIFORNIA PLUMBING CODE, PART 5, TITLE 24 C.C.R. (2006 U.P.C. WITH CALIFORNIA AMENDMENTS)
2007	CALIFORNIA ENERGY CODE, PART 6, TITLE 24 C.C.R.
2007	CALIFORNIA FIRE CODE, PART 9, TITLE 24 C.C.R. (2006 I.F.C. WITH CALIFORNIA AMENDMENTS)
2007	CALIFORNIA REFERENCED STANDARDS, PART 12, TITLE 24 C.C.R. TITLE 19 C.C.R. PUBLIC SAFETY, STATE FIRE MARSHAL REGULATIONS.
NFPA 13	AUTOMATIC SPRINKLER SYSTEM -----2002 EDITION
NFPA 14	STANDPIPE SYSTEM -----2003 EDITION
NFPA 17A	WET CHEMICAL SYSTEM -----2002 EDITION
NFPA 24	PRIVATE SERVICE MAINS -----2002 EDITION
NFPA 72	NATIONAL FIRE ALARM CODE -----2002 EDITION (NOTE SEE UL STANDARDS 1971 FOR ("VISUAL DEVICES"))

## GENERAL NOTES

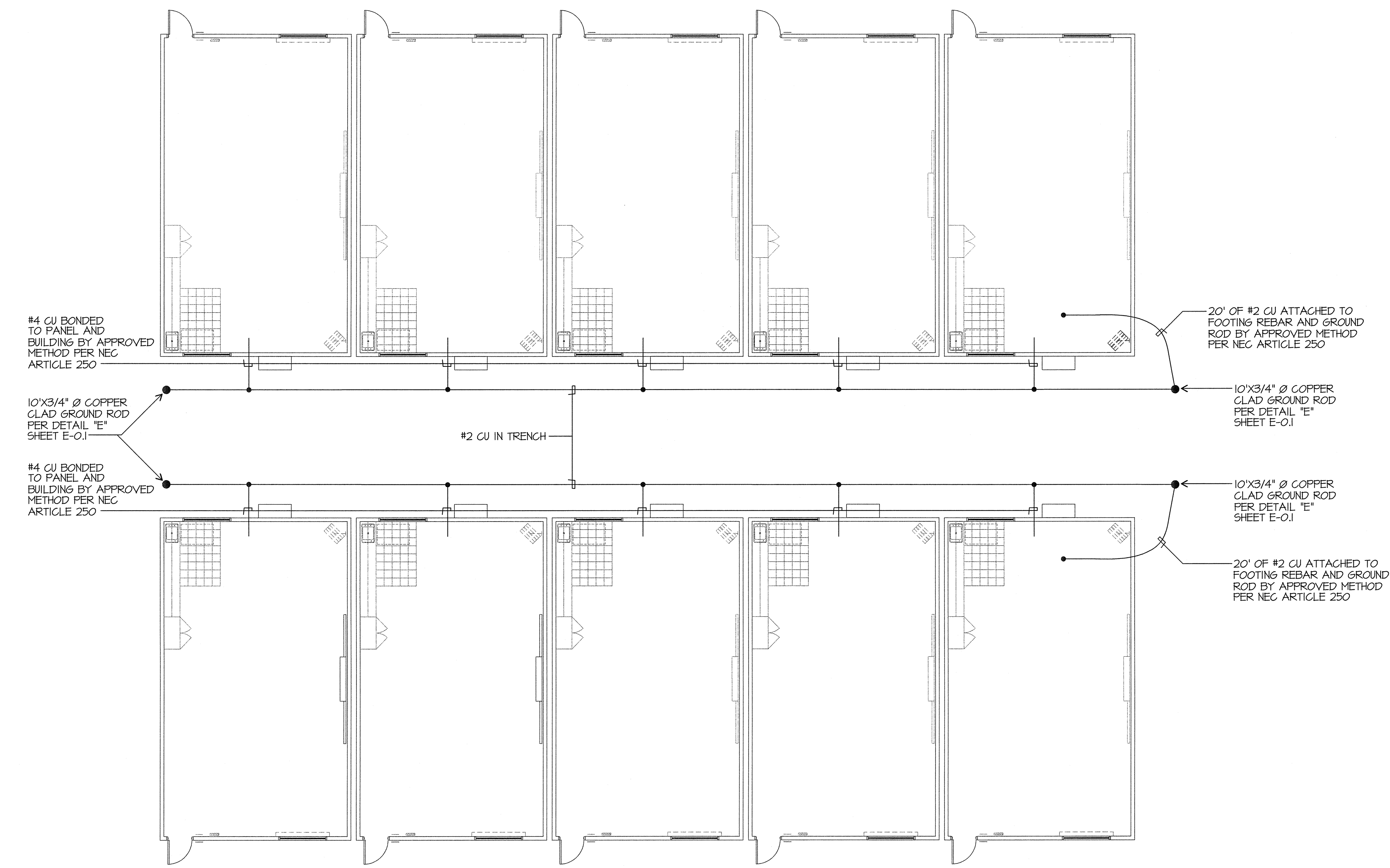
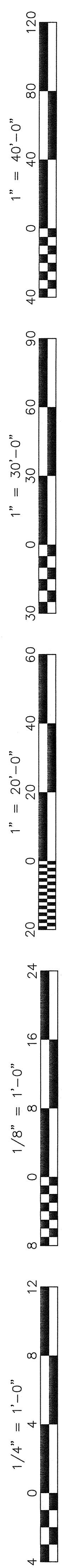
- VISIT JOB SITE AND VERIFY EXISTING CONDITIONS PRIOR TO BID.
- THE ELECTRICAL WORK SHALL BE INSTALLED IN ACCORDANCE WITH THE NATIONAL ELECTRICAL CODE AND ALL APPLICABLE LOCAL ORDINANCES. WHERE PLANS CALL FOR A HIGHER STANDARD THAN APPLICABLE CODES, THE PLANS SHALL GOVERN.
- CONDUIT RUNS ARE SHOWN DIAGRAMMATICALLY. EXACT LOCATIONS SHALL BE DETERMINED IN THE FIELD TO SUIT FIELD CONDITIONS.
- ALL ELECTRICAL EQUIPMENT, APPLIANCES AND LIGHTING FIXTURES SHALL BE LISTED BY A RECOGNIZED TEST LAB AND BEAR THAT LABEL OF APPROVAL.
- CONTRACTOR SHALL FURNISH, INSTALL AND CONNECT ALL MATERIAL AND EQUIPMENT FOR THIS WORK UNLESS OTHERWISE NOTED.
- FURNISH DISCONNECT SWITCHES AT REMOTE MOTORS.
- ALL SPACES AS INDICATED ON PANELS OR SWITCHBOARD SHALL BE COMPLETE WITH HARDWARE AND BUSSING FOR FUTURE BREAKER OR SWITCH.
- CHECK ARCHITECTURAL PLANS FOR DOOR SWINGS BEFORE INSTALLING SWITCH OUTLETS.
- GROUNDING AND BONDING SHALL BE PER CODE PLUS ANY ADDITIONAL PROVISIONS SPECIFIED OR SHOWN ON DRAWINGS.
- ALL CONDUIT RUNS SHALL CONTAIN A CODE SIZED GROUND CONDUCTOR.
- THESE PLANS ARE NOT COMPLETE UNTIL APPROVED BY THE AUTHORITY HAVING JURISDICTION.
- ALL CONDUCTORS SHALL BE IN CONDUIT.
- ALL CONDUCTORS SHALL BE COPPER WITH TYPE THHN/THWN INSULATION.



MSB "AC" MOUNTING DETAIL

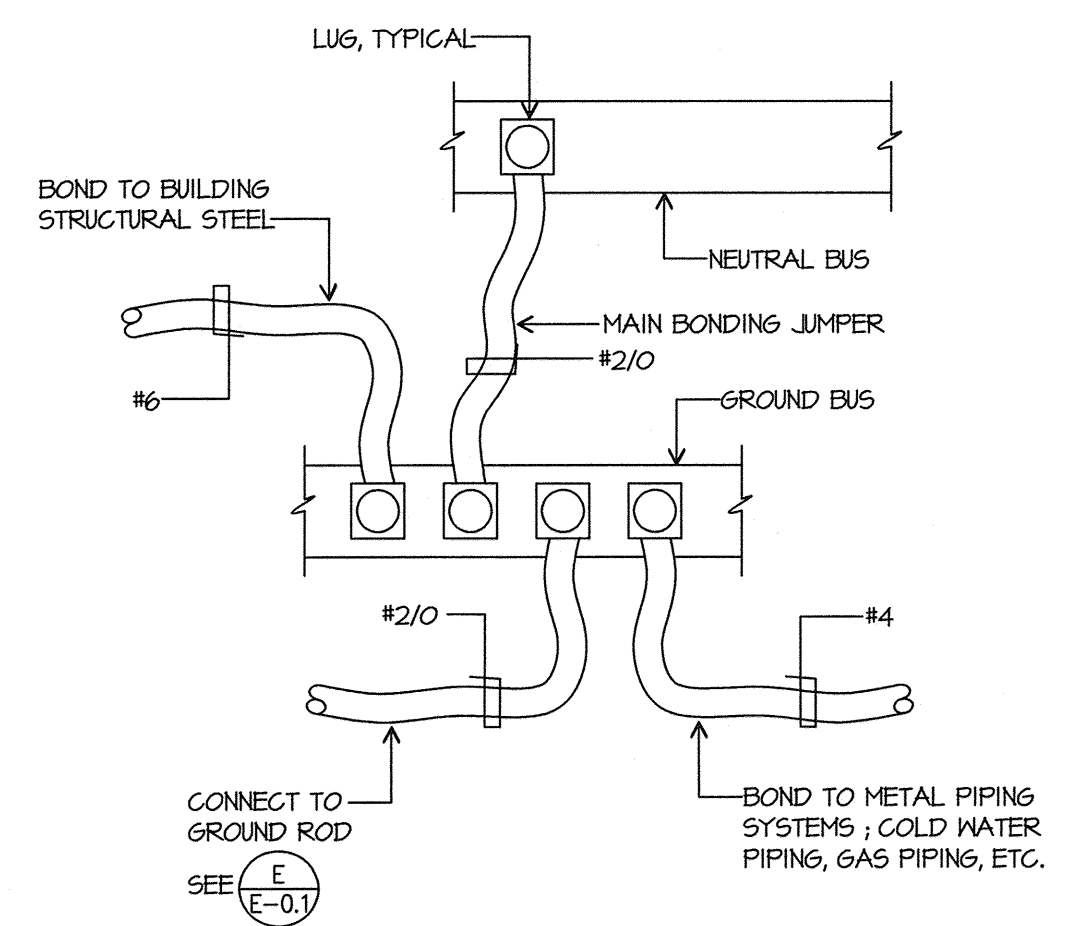
SCALE: NONE



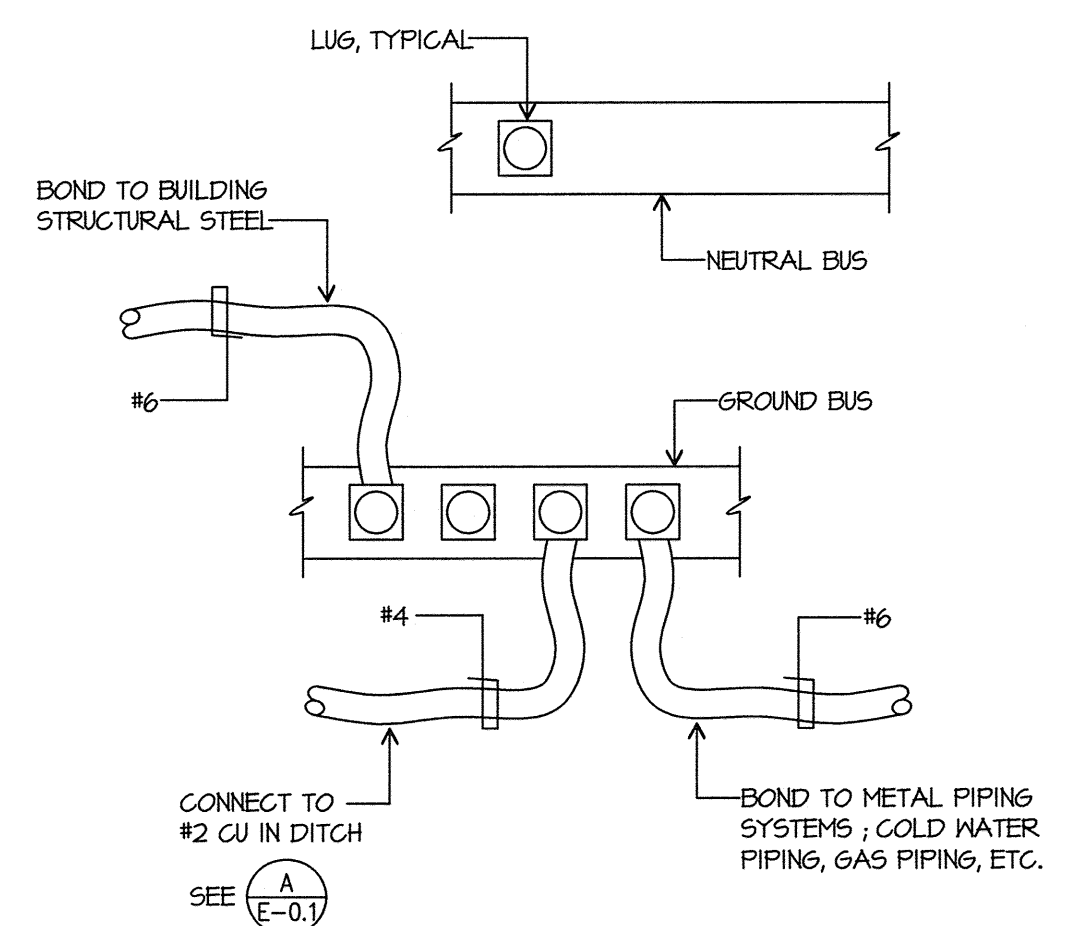


GROUNDING DETAIL

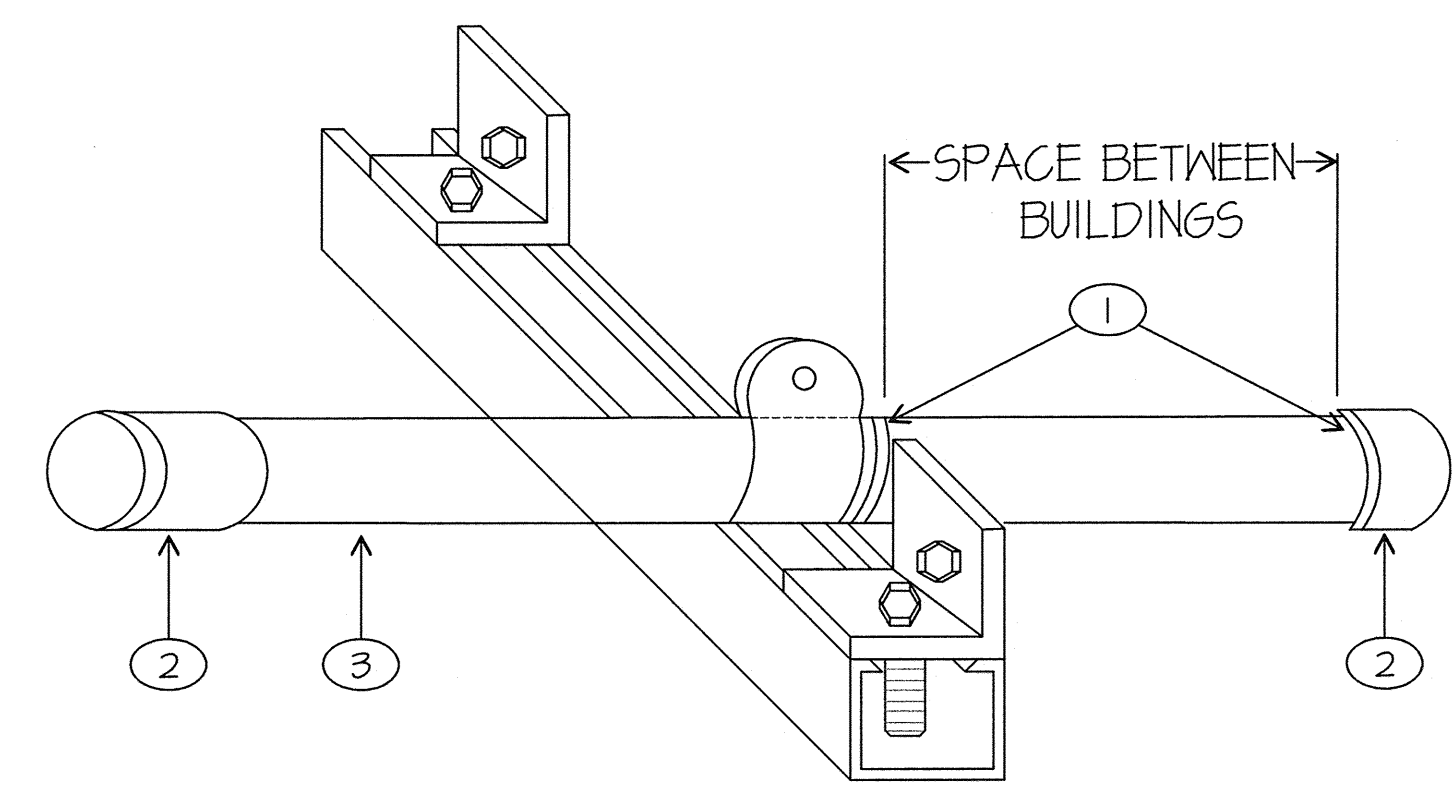
SCALE: 1/8"=1'-0" (A)



BONDING DIAGRAM "MSB"  
SCALE: NONE (B)

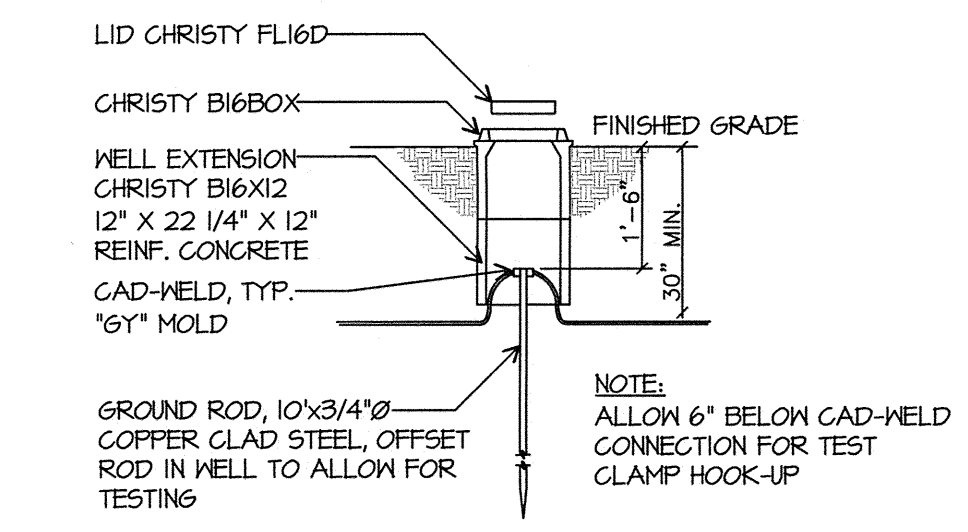


BONDING DIAGRAM PORTABLE PANEL  
SCALE: NONE (C)



CONDUIT SLEEVE SUPPORT  
WALL MOUNTED UNISTRUT BRACKETS  
FOR ONE OR MORE CONDUITS

- SCALE: NONE
- (1) FOAM FILL AND FIRE CAULK THE WALLS AFTER CONDUITS ARE INSTALLED.
  - (2) INSULATED THROAT SET SCREW CONNECTOR
  - (3) USE OF EMT IS ACCEPTABLE FOR SLEEVE INSTALLATION.



GROUND ACCESS BOX (E)



**Ownership of Documents**  
This document, the ideas and designs incorporated herein, as an instrument of Professional Service is the property of Integrated Designs by SOMAM, Inc. and is not to be used, in whole or in part for any other project without written authorization.  
© COPYRIGHT 2009

**integrated designs** by SOMAM, Inc.  
ARCHITECTURE - ENGINEERING - INTERIOR DESIGN - CONSTRUCTION MANAGEMENT  
601 N. Fresno, Suite 130 - Fresno, California 93710  
Phone: (559) 438-0881 Fax: (559) 438-0887 E-Mail: design@somam.com  
www.integrateddesigns.com

Revision:	Revision Description:	Rev. Date:

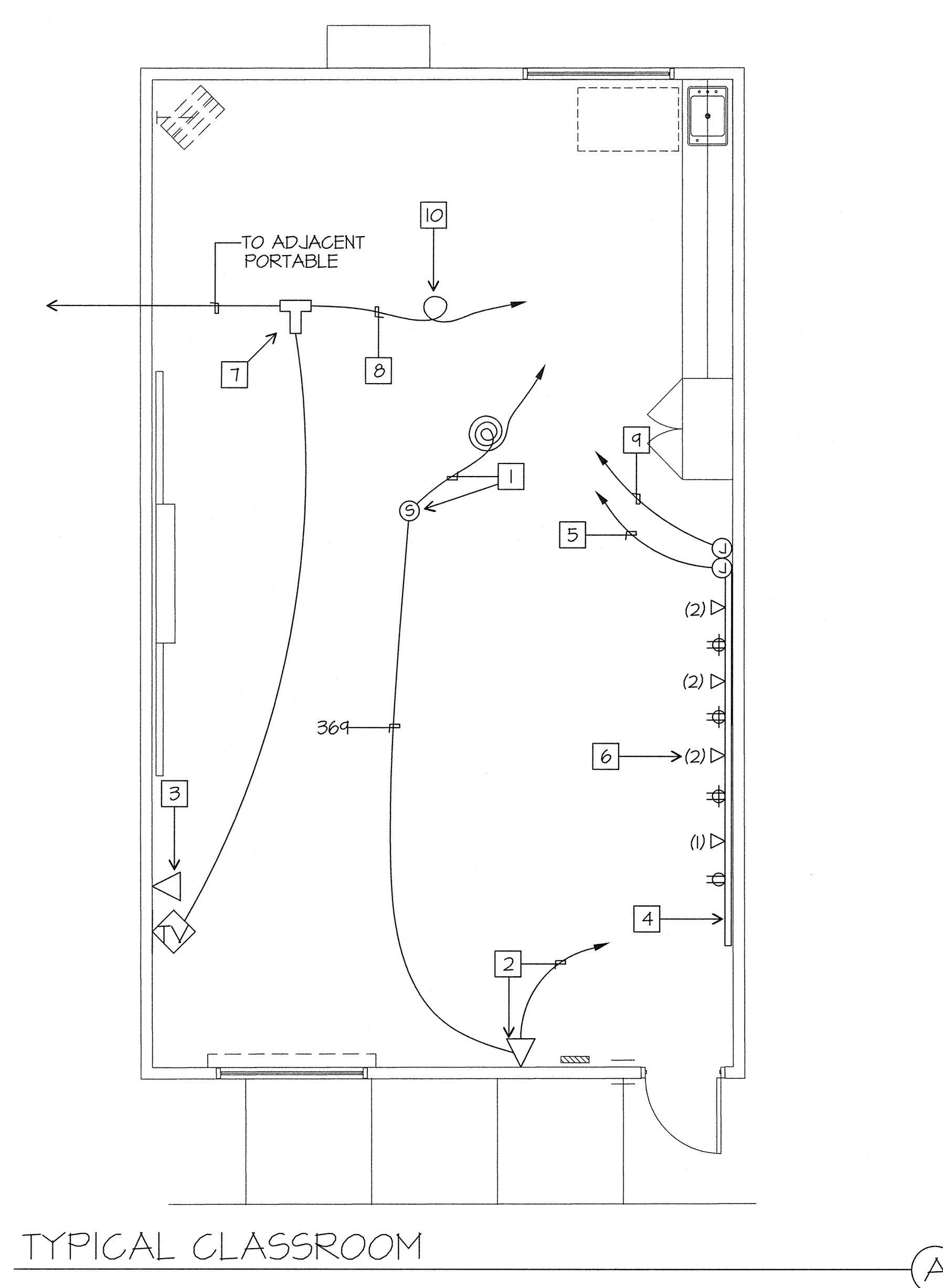
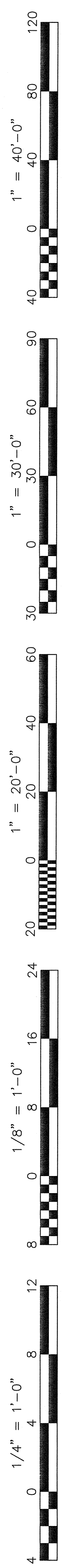
**SINGLE LINE DIAGRAM, SYMBOLS, DETAILS, GENERAL NOTES**  
Project Name & Address:  
**MUNSEY ELEMENTARY SCHOOL**  
**10 NEW PORTABLE CLASSROOMS**  
BAKERSFIELD CITY SCHOOL DISTRICT  
3801 BRAVE AVE. BAKERSFIELD, CA 93309

Issue Date: 05/02/06  
Date: 05/02/06  
Designer: DESIGNER  
DR: DRAFTER  
PC: CJM

DSA Identification Stamp:  
IDENTIFICATION STAMP  
DIV. OF THE STATE ARCHITECT  
CA 112985  
AC FL3 SS  
DATE SEP 24 2009

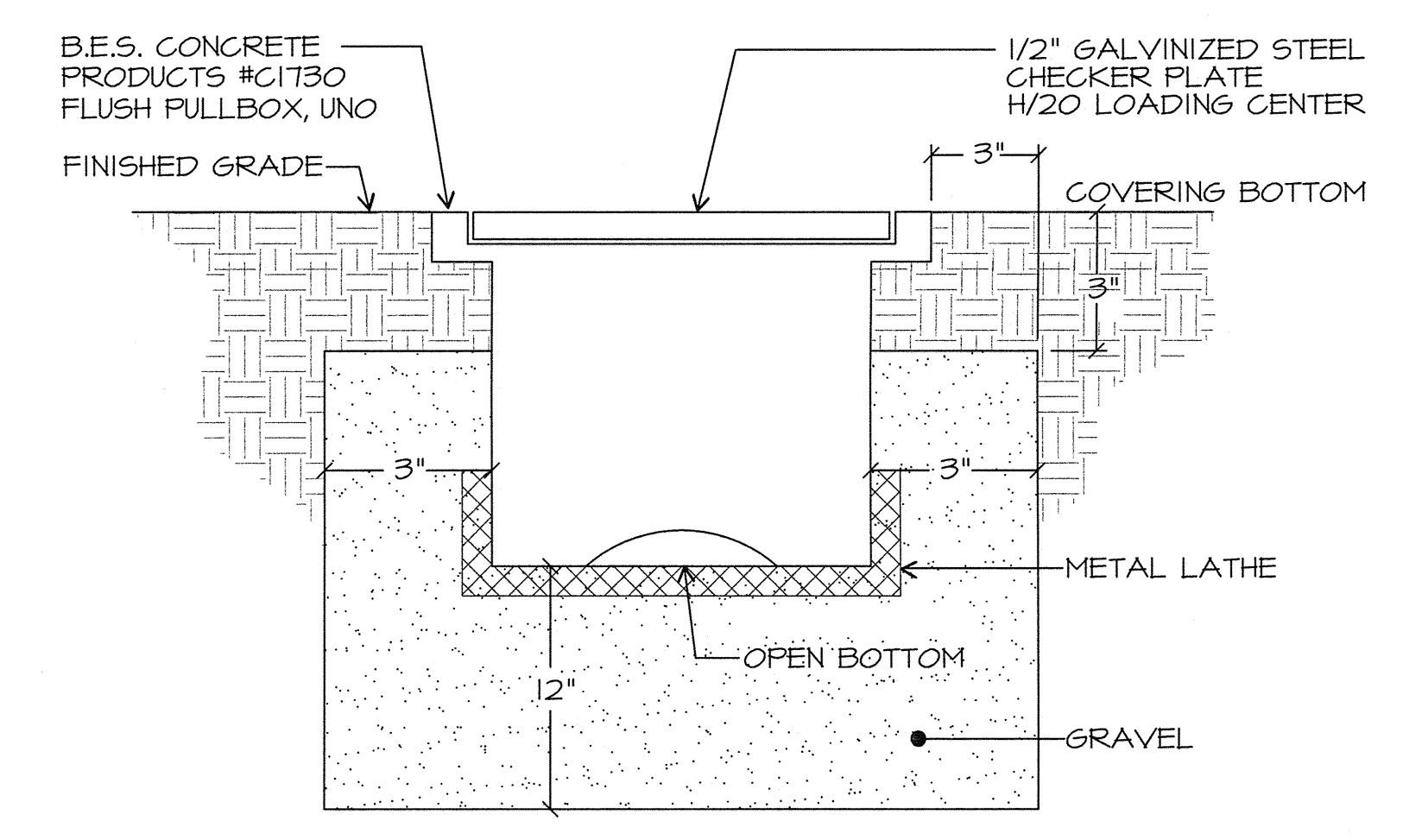
Stamp(s):

Job No.: **3832**  
Sheet No.: **E-0.1**  
Release: CURTIS MCNALLY

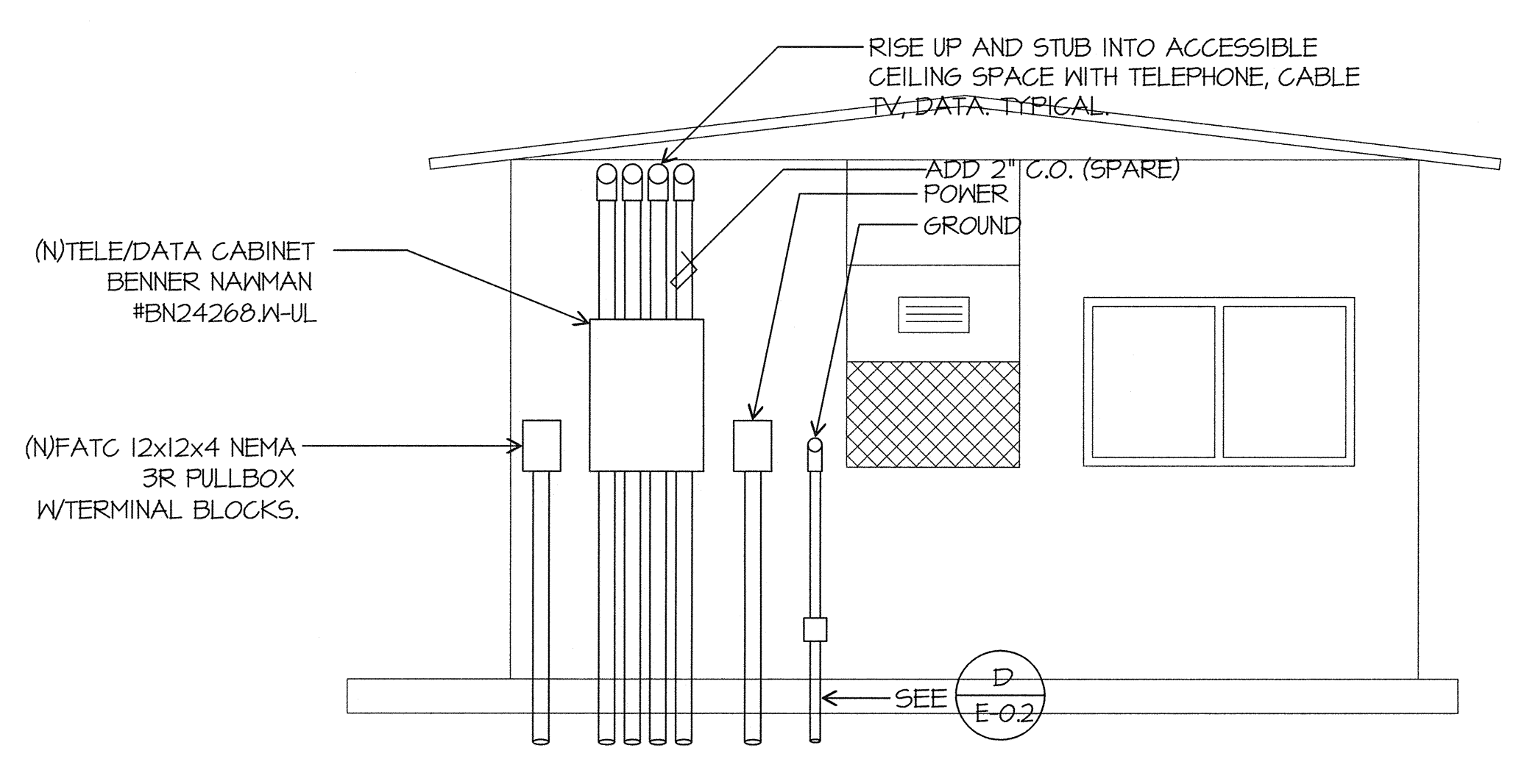


- TYPICAL CLASSROOM NOTES**
- 1 PROVIDE (ATLAS MODEL #SD72-W 25W/70W OR EQUAL) CEILING MOUNTED SPEAKER. PROVIDE A DEDICATED WESTPENN 369 CABLE BACK TO THE TERMINAL CABINET. TERMINATE ON 66 BLOCK. TERMINATE SHIELDED CABLE ON SPEAKER. PROVIDE 3 SERVICE LOOPS OF CABLE AT EACH SPEAKER LOCATION.
  - 2 PROVIDE (CORTELCO EASYTOUCH MODEL #240085-VOE-21F, COLOR SANDSTONE) TELEPHONE WITH RJ11 JACK AT EXISTING OUTLET. EXTEND 369 CABLE FROM SPEAKER. USE ONE OF TWO PAIR LEFT FOR TELEPHONE CONNECTION. PROVIDE ONE DEDICATED CAT 5 CABLE, (GENERAL CABLE #5500) TO IDF CABINET (FUTURE SPARE).
  - 3 PROVIDE RJ45 DATA JACK AT (E) OUTLET. ROUTE (1) CAT5 CABLE (GENERAL CABLE #5500) BACK TO NEAREST IDF CABINET AND TERMINATE ON PATCH PANEL.
  - 4 SURFACE MOUNT WIREMOLD BRAND, TWO COMPARTMENT 5400 SERIES RACEWAY WITH SPLIT COVER. CONTRACTOR SHALL PROVIDE ALL ACCESSORIES, FITTINGS, FACEPLATES AND DEVICES FOR A COMPLETE SYSTEM. COORDINATE EXACT LOCATION WITH ROBERT VAN TASSLE, SUPERVISOR, PLANNING AND CONSTRUCTION BAKERSFIELD CITY SCHOOL DISTRICT, 661-631-5884. MOUNT AT 18" A.F.F.
  - 5 PROVIDE (7) CAT5 CABLES BACK TO CLOSEST IDF AND TERMINATE ON PATCH PANEL.
  - 6 NUMBER SIGNIFIES THE QUANTITY OF RJ45 JACKS AT DATA LOCATION. CONTRACTOR SHALL PROVIDE AND INSTALL CABLE, JACKS AND TERMINATIONS.
  - 7 PROVIDE BLONDER TONGUE T-TAPS WITH QUAD SHIELD COMPRESSION TERMINATIONS. CABLE CONTINUES TO ADJACENT PORTABLE CLASSROOM. INTERIOR TV CABLE SHALL BE RG6 QUAD SHIELD CABLE. PROVIDE 12' OF EXTRA CABLE PER CLASSROOM. COORDINATE WITH GARY TAYLOR, NETWORK SYSTEMS ENGINEER FOR BAKERSFIELD CITY SCHOOL DISTRICT, 661-631-4745.
  - 8 FROM COMMUNICATION TERMINAL CABINET.
  - 9 TO SPARE 120V CIRCUIT IN CLASSROOM PANEL. PROVIDE 20/1 CIRCUIT BREAKER AS NEEDED.
  - 10 PROVIDE 2' SERVICE LOOP, TYPICAL.

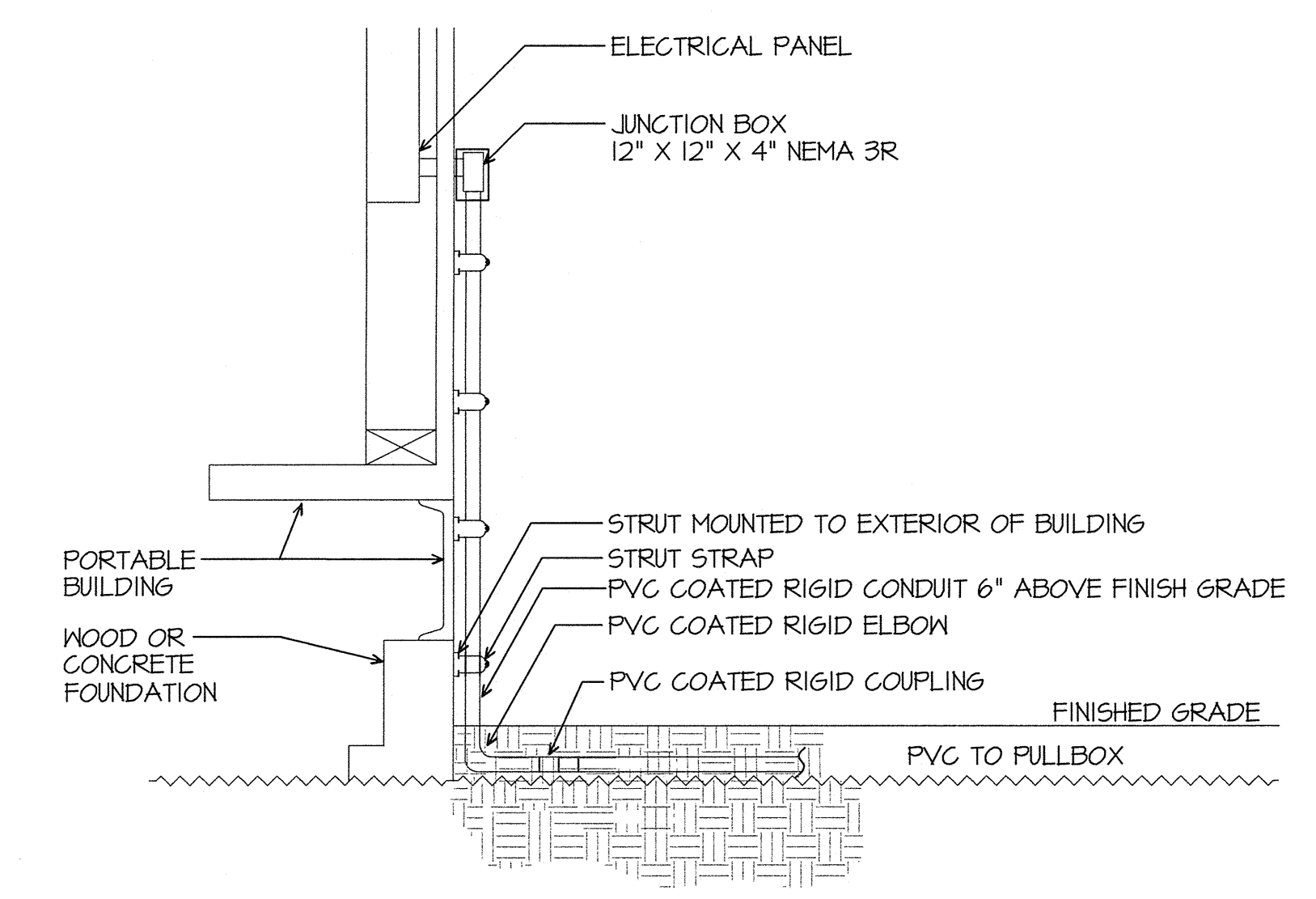
TYPICAL CLASSROOM (A)



FLUSH PULLBOX DETAIL (C)  
SCALE: NONE



ELEVATION AT REAR OF RELO 26 AND 31 (B)  
SCALE: NONE



TYPICAL PORTABLE CONNECTION (D)  
SCALE: NONE

**JMPE**  
JULIAN MALONEY PROFESSIONAL ENGINEERING  
ELECTRICAL ENGINEERING  
LIGHTING DESIGN  
CA REGISTRATION NO. K12085  
04082  
3000 WING AVENUE, SUITE 202  
BAKERSFIELD, CA 93309  
(805) 835-7853  
FAX (805) 835-7813  
email: jmaloney@jmpe.net  
www.jmpe.net



Ownership of Documents  
This document, the ideas and designs incorporated herein, as an instrument of Professional Service is the property of Integrated Designs by SOMAM Inc. and is not to be used, in whole or in part for any other project without written authorization.  
© COPYRIGHT 2009

**integrated designs** by SOMAM, Inc.  
ARCHITECTURE • INTERIOR DESIGN • CONSTRUCTION MANAGEMENT  
6011 N. Fresno, Suite 130 - Fresno, California 93710  
Phone (559) 436-0881 Fax (559) 436-0887 E-Mail: design@somam.com  
www.integrateddesigns.com

Revision Description:	Rev. Date:

Sheet Title: **SINGLE LINE DIAGRAM, SYMBOLS, DETAILS, GENERAL NOTES**  
Project Name & Address: **MUNSEY ELEMENTARY SCHOOL 10 NEW PORTABLE CLASSROOMS**  
BAKERSFIELD CITY SCHOOL DISTRICT  
3801 BRAVE AVE. BAKERSFIELD, CA 93309

Issue Date:	Date:	Designer:	DR:	DRAFTER:	FC:
	05/02/06	DESIGNER			CJM

DSA Identification Stamp:

IDENTIFICATION STAMP  
DIV. OF THE STATE ARCHITECT  
C.S. 112905  
AC: FLS SS  
DATE SEP 21 2007

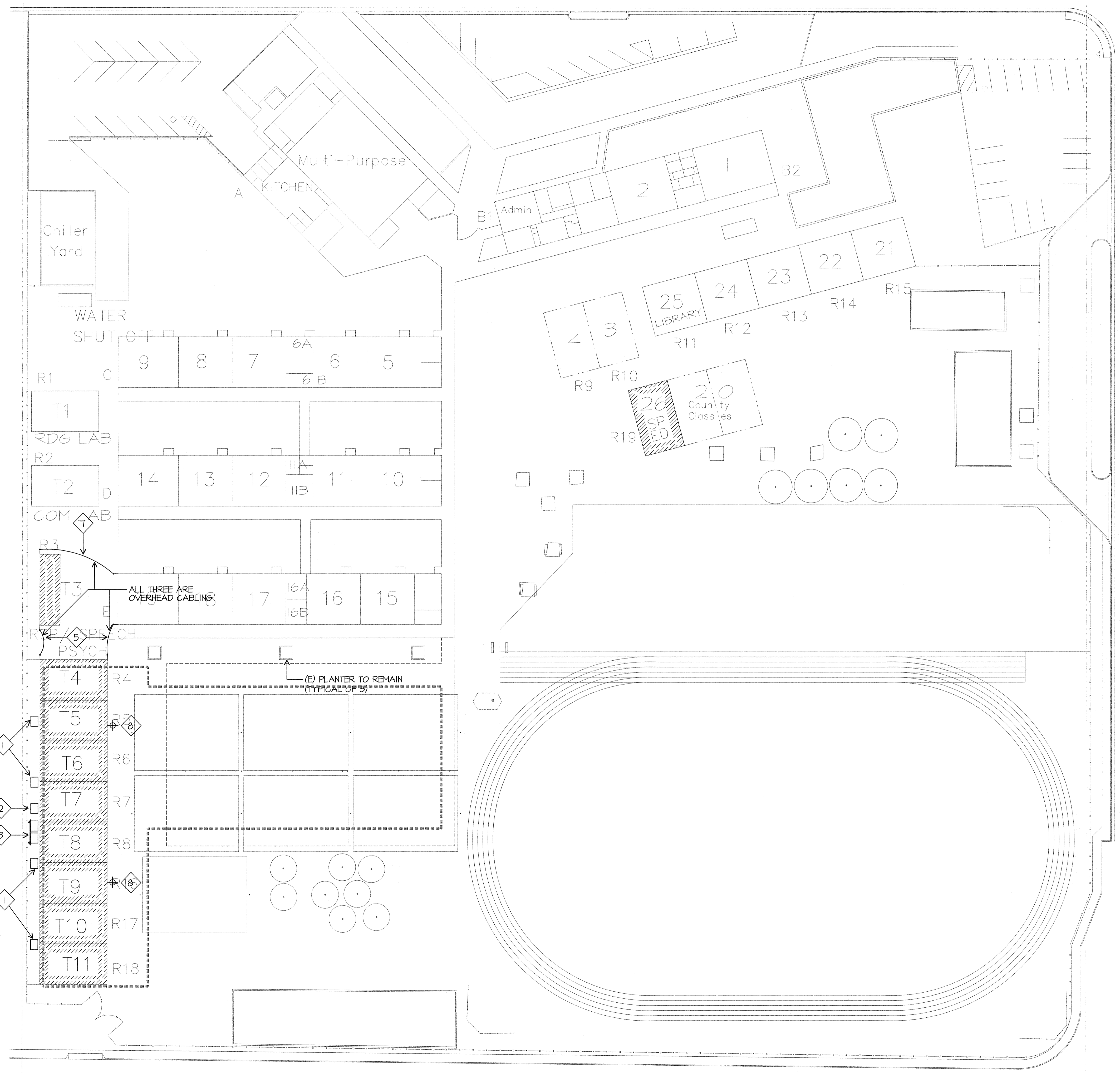
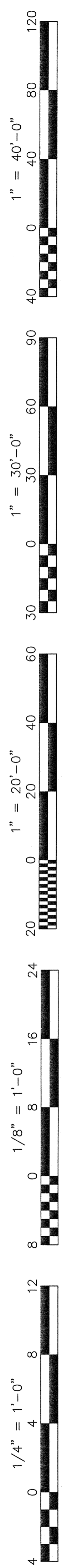
Stamp(s):

Job No.: **3832**

Sheet No.: **E-0.2**

Release: **CURTIS MCNALLY**

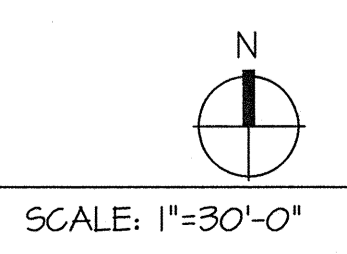
JMPE/JOB#:09082/DATE:04-09-09 AC



DEMOLITION SITE ELECTRICAL PLAN

BELLE TERRACE

SOUTH REAL ROAD



DEMOLITION SITE ELECTRICAL PLAN NOTES

- 1 REMOVE EXISTING CONDUCTORS FROM RELOCATED BUILDING PANELS AND CONDUITS BACK TO EXISTING CONCRETE PULL BOX.
- 2 EXISTING CONCRETE PULL BOX TO REMAIN (N-36 PULL BOX.)
- 3 DISCONNECT EXISTING FEEDER CONDUCTORS AND REMOVE FROM PANEL TO EXISTING CONCRETE PULL BOX. BACKBOARD AND PANELS TO REMAIN.
- 4 AFTER PG&E HAS DISCONNECTED SERVICE AND REMOVED EXISTING METER, PROVIDE A BLANK METER SOCKET COVER.
- 5 REMOVE EXISTING OVERHEAD CABLING FROM T4 TO T3 AND T4 TO ROOM 19. CUT CABLES AT T4 AND T3 AND REMOVE ANY RISER. CUT CABLES AT ROOM 19 AND WEATHER PROOF THE CABLE ENDS.
- 6 REMOVE EXISTING ABOVE GROUND 12 X 12 X 4 NEMA 3R J-BOXES AND UNISTRUT SUPPORTS COMPLETELY. INSTALL (N) N-9 CONCRETE PULL BOXES OVER (E) CONDUITS. SET BOXES FLUSH TO EXISTING GRADE (TYPICAL).
- 7 REMOVE EXISTING OVERHEAD SERVICE CONDUCTORS FROM T-3 BACK TO ROOM 19. REMOVE AT RISER ON ROOM 19 AND WEATHER PROOF THE CONDUCTOR ENDS. REMOVE RISER FROM PANEL ON T-3.
- 8 REMOVE EXISTING RISER SUPPORTS AND EXTERIOR FLOOD LIGHTS.

Ownership of Documents  
This document, the ideas and designs incorporated herein, as an instrument of Professional Service is the property of Integrated Designs by SOMAM Inc. and is not to be used, in whole or in part for any other project without written authorization.  
© COPYRIGHT 2009

**integrated designs** by SOMAM, Inc.  
ARCHITECTURE - ENGINEERING - INTERIOR DESIGN - CONSTRUCTION MANAGEMENT  
6011 N. Fresno, Suite 100 - Fresno, California 93710  
Phone: (559) 438-0861 Fax: (559) 438-0867 E-Mail: design@somam.com  
www.integrateddesigns.com

Revision	Revision Description	Rev. Date

---

Sheet Title: **DEMOLITION SITE ELECTRICAL PLAN**

Issue Date: 05/02/06

Designer: DR: DRAFTER: PC: CJM

Project Name & Address: **MUNSEY ELEMENTARY SCHOOL**  
10 NEW PORTABLE CLASSROOMS  
BAKERSFIELD CITY SCHOOL DISTRICT  
3801 BRAVE AVE. BAKERSFIELD, CA 93309

DSA Identification Stamp:

IDENTIFICATION STAMP  
DIV. OF THE STATE ARCHITECT

112985

AC FLR SS

DATE SEP 24 2009

Stamp(s):

**JMPE**  
LICENSED ELECTRICAL ENGINEERING  
LIGHTING DESIGN  
CA REGISTRATION NO R13003

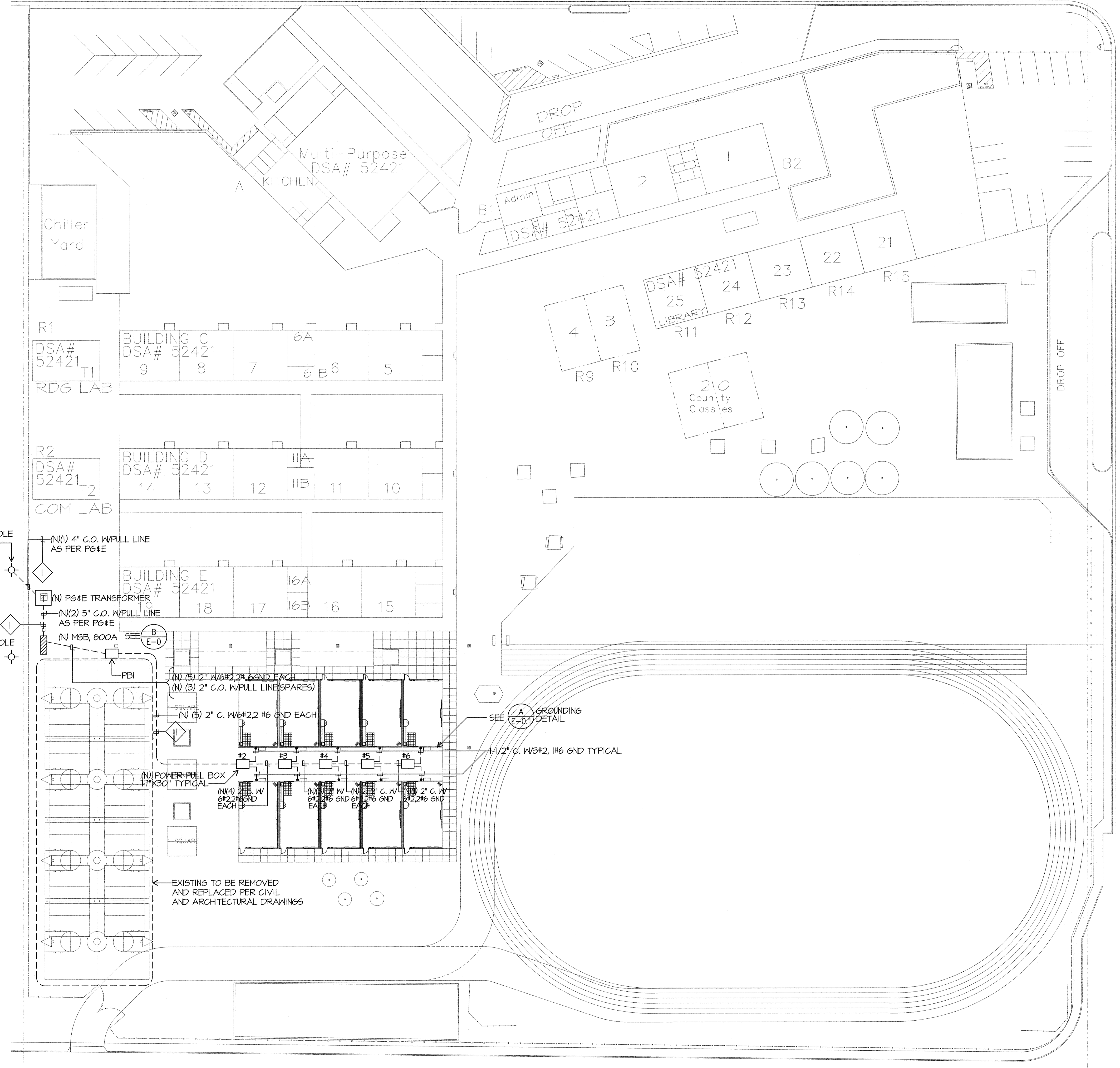
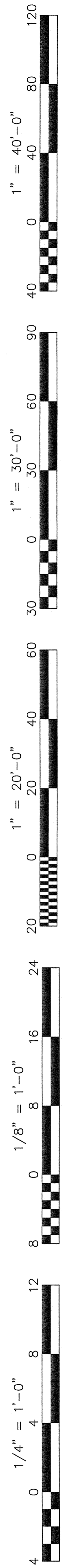
09082

5000 KING AVENUE  
SUITE 201  
BAKERSFIELD, CA 93309  
(805) 831-7955  
FAX (805) 831-7813  
email: jmaloney@jmpe.net  
www.jmpe.net

Job No.: **3832**

Sheet No.: **E-1**

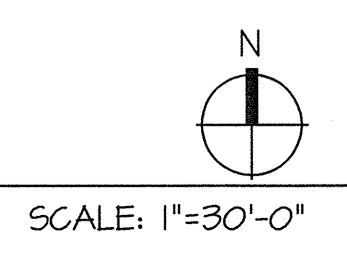
Release: JMPE/JOB#:09082/DATE:09-09-09 AC CURTIS MCNALLY



**ELECTRICAL SITE PLAN NOTES**

- 1 SAWCUT AND REPAIR TO MATCH EXISTING. BORING IS AN ACCEPTABLE METHOD OF CONDUIT INSTALLATION. PROVIDE METHOD OF PROCEDURE FOR BORING TO ENGINEER FOR REVIEW AND APPROVAL. DETAIL BORING PROCEDURE. IDENTIFY TYPE OF CONDUIT TO BE USED IN BORE.

**SITE ELECTRICAL PLAN**



Ownership of Documents  
This document, the ideas and designs incorporated herein, as an instrument of Professional Service is the property of Integrated Designs by SOMAM Inc. and is not to be used, in whole or in part for any other project without written authorization.  
© COPYRIGHT 2009

**integrated designs** by SOMAM, Inc.  
ARCHITECTURE - ENGINEERING - INTERIOR DESIGN - CONSTRUCTION MANAGEMENT  
6011 N. Fresno, Suite 130 - Fresno, California 93710  
Phone: (559) 438-0887 Fax: (559) 438-0887 E-Mail: design@somam.com  
www.integrateddesigns.com

Revision	Revision Description	Rev. Date

---

**SITE ELECTRICAL PLAN**

Project Name & Address:  
**MUNSEY ELEMENTARY SCHOOL**  
**10 NEW PORTABLE CLASSROOMS**  
BAKERSFIELD CITY SCHOOL DISTRICT  
3801 BRAVE AVE. BAKERSFIELD, CA 93309

Issue Date	Date	Designer	DR	DRAFTER	PC
	05/02/06	DESIGNER			CJM

---

Issue Date: 05/02/06

Designer: DESIGNER

DR: DRAFTER

PC: CJM

DSA Identification Stamp:

IDENTIFICATION STAMP  
DIV. OF THE STATE ARCHITECT

05-112985

AC: [Signature]

DATE: SEP 24 2009

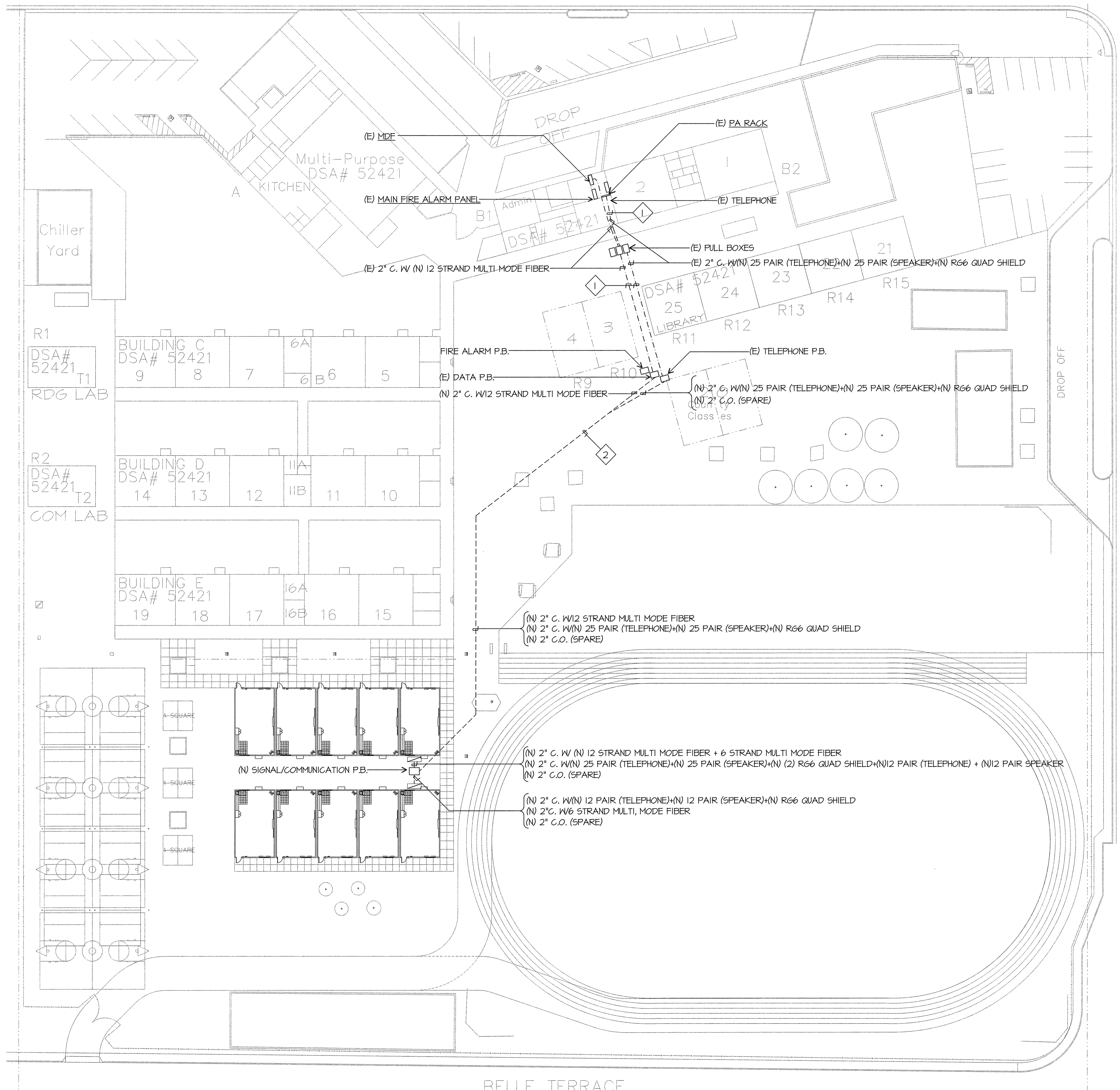
---

Stamps:

Job No.: **3832**

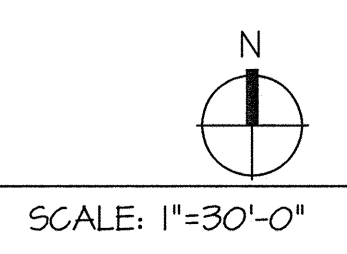
Sheet No.: **E-1.1**

Release: **CURTIS MCNALLY**



- SITE COMMUNICATION PLAN NOTES**
- 1 PULL NEW CABLES IN EXISTING CONDUIT. PULL PAST EXISTING CABLES.
  - 2 SAWCUT AND REPAIR TO MATCH EXISTING. BORING IS AN ACCEPTABLE METHOD OF CONDUIT INSTALLATION. PROVIDE METHOD OF PROCEDURE FOR BORING TO ENGINEER FOR REVIEW AND APPROVAL. DETAIL BORING PROCEDURE. IDENTIFY TYPE OF CONDUIT TO BE USED IN BORE.

SITE COMMUNICATION PLAN



Ownership of Documents  
This document, the ideas and designs incorporated herein, as an instrument of Professional Service is the property of Integrated Designs by SOMAM Inc. and is not to be used, in whole or in part for any other project without written authorization. © COPYRIGHT 2009

**integrated designs** by SOMAM, Inc.  
ARCHITECTURE - ENGINEERING - INTERIOR DESIGN - CONSTRUCTION MANAGEMENT  
6011 N. Fresno, Suite 130 - Fresno, California 93710  
Phone: (559) 438-0881 Fax: (559) 438-0887 E-Mail: design@somam.com  
www.integrateddesigns.com

Revision Description:	Rev. Date:

---

**SITE COMMUNICATION PLAN**

Project Name & Address:  
**MUNSEY ELEMENTARY SCHOOL**  
**10 NEW PORTABLE CLASSROOMS**  
BAKERSFIELD CITY SCHOOL DISTRICT  
3801 BRAVE AVE. BAKERSFIELD, CA 93309

Issue Date:	Date:	Designer:	DR:	DRAFTER:	FC:
	05/02/06	DESIGNER			CJM

---

Issue Date: 05/02/06

Designer: DESIGNER

DR: [Signature]

DRAFTER: [Signature]

FC: CJM

DSA Identification Stamp:

IDENTIFICATION STAMP  
DIV. OF THE STATE ARCHITECT

GS-112985

AC: [Signature] FS: [Signature] SS: [Signature]

DATE: SEP 27 2009

---

Stamp(s):

Job No.: **3832**

Sheet No.: **E-2**

Release: **CURTIS MCNALLY**