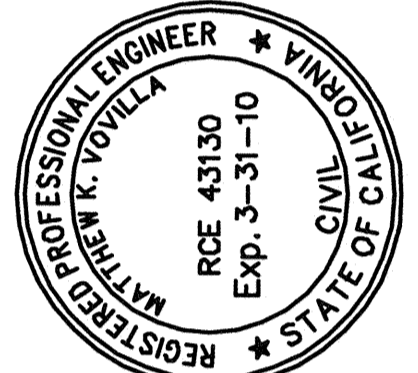
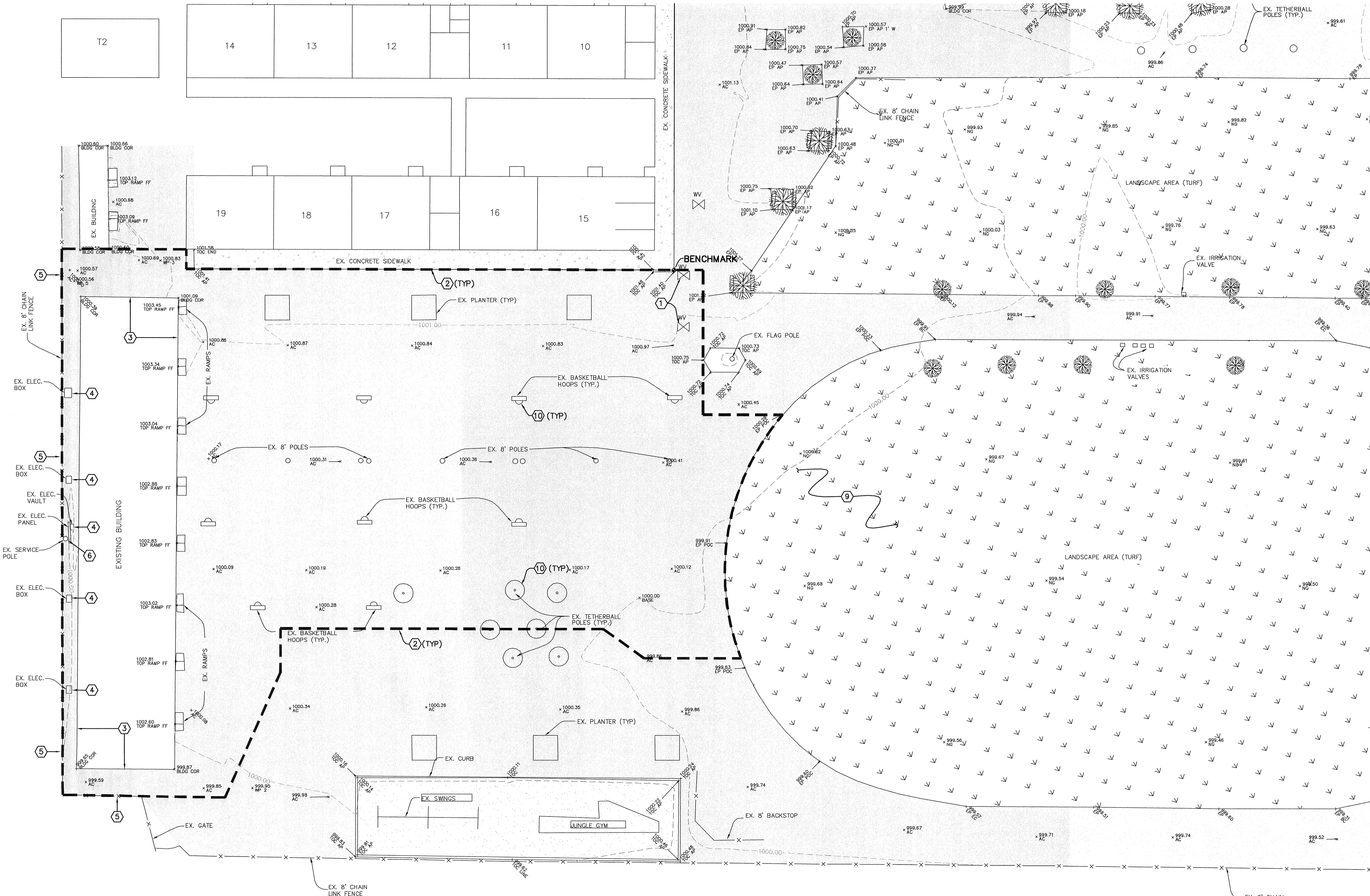


LEGEND (EXISTING CONDITIONS)

AC	ASPHALT CONCRETE		EXISTING PLAYGROUND AREA
AP	ANGLE POINT		EXISTING CONCRETE
BC	BEGINNING CURVE		EXISTING LANDSCAPING (TURF)
CO	CLEANOUT		EXISTING ASPHALT CONCRETE
EP	EDGE OF PAVEMENT		
EX	EXISTING		
FL	FLOWLINE		
NG	NATURAL GROUND		
TOC	TOP OF CONCRETE		
WV	WATER VALVE		
	EXISTING GROUND CONTOUR		
	EXISTING TREE		
■■■■■		LIMITS OF DEMOLITION	

DEMOLITION NOTES:

- 1 CONTRACTOR SHALL RESEARCH ALL EXISTING UTILITIES, AND SHALL "POTHOLE" TO VERIFY THEIR LOCATIONS. ALL EXISTING UNDERGROUND UTILITIES, EXCEPT AS OTHERWISE NOTED, SHALL BE PROTECTED IN-PLACE.
- 2 ALL PAVEMENT OR CONCRETE TO BE DEMOLISHED SHALL BE SAW-CUT ALONG THE REMOVAL LINE.
- 3 COORDINATE WITH DISTRICT FOR REMOVAL/SALVAGE OF EXISTING CLASSROOMS.
- 4 REMOVE ELECTRICAL BOXES AND BACKBOARD PANEL.
- 5 CHAIN LINK FENCE TO REMAIN
- 6 COORDINATE WITH DISTRICT FOR RELOCATING EXISTING SERVICE POLE.
- 7 REFER TO SHEET 2 OF THESE PLANS AND THE ARCHITECTURAL DRAWINGS FOR ADDITIONAL NOTES REGARDING DEMOLITION.
- 8 THE LOCATION OF EXISTING UNDERGROUND UTILITIES AND PIPELINES HAVE NOT BEEN SHOWN ON THESE PLANS. THE EXACT DEPTH AND LOCATION OF UNDERGROUND UTILITIES SHALL BE DETERMINED PRIOR TO ANY GROUND DISTURBANCE.
- 9 TURF AND IRRIGATION SHALL BE REMOVED AS NECESSARY FOR CONSTRUCTION OF STORM WATER CHAMBERS - SEE SHEET 8. CUT AND CAP IRRIGATION AS DIRECTED BY THE ENGINEER.
- 10 CONTRACTOR SHALL SALVAGE EXISTING BASKETBALL GOALS, VOLLEYBALL POLES, AND TETHERBALL POLES, AND SHALL DELIVER TO THE DISTRICT.



IDENTIFICATION STAMP
 DIV. OF THE STATE ARCHITECT
 01-112985
 AC FL 8 SS 3
 DATE: SEP 24 2009

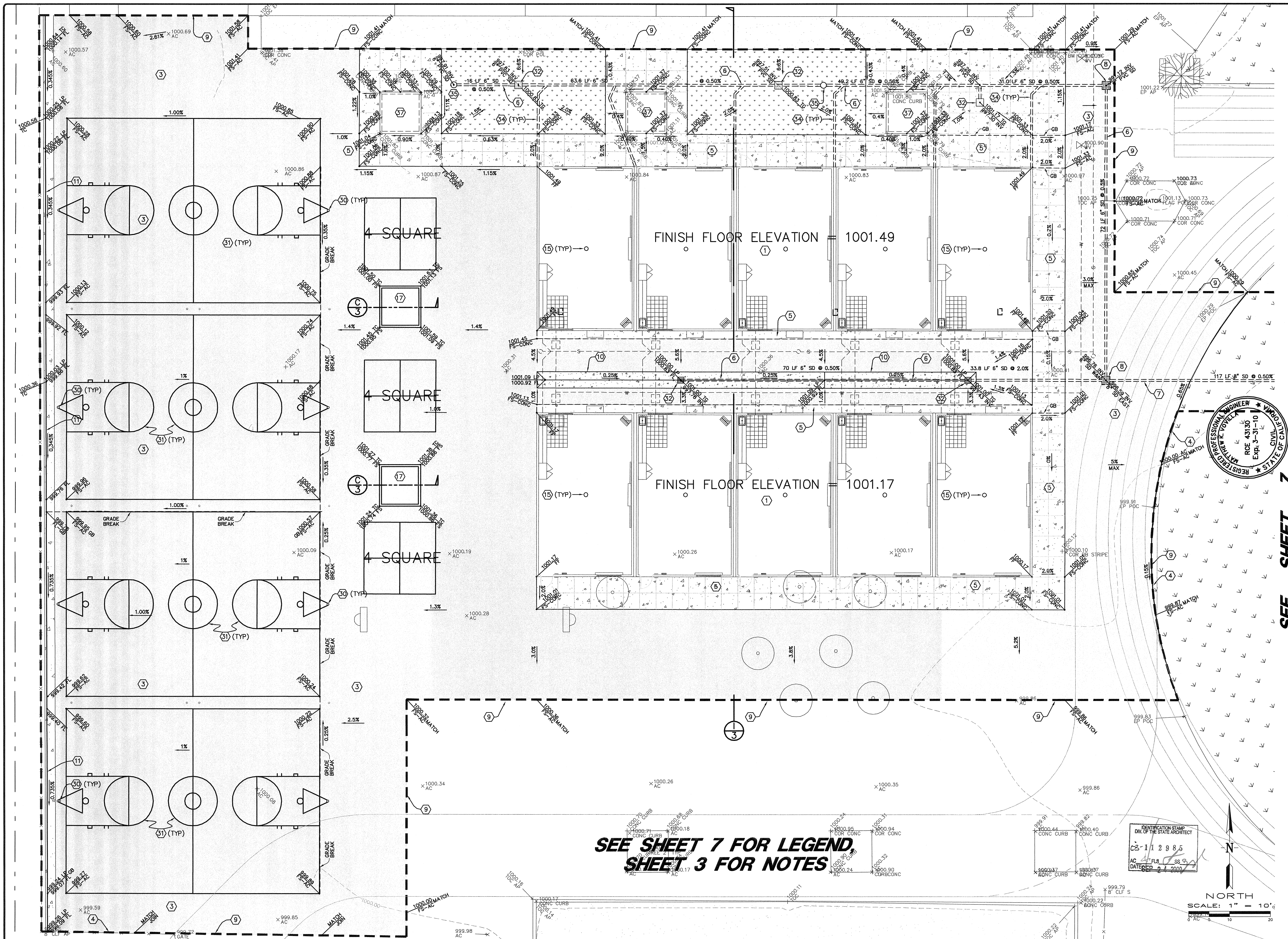
Pinnacle Civil Engineering, Inc.
 2161 Saturn Court, Bakersfield, CA 93308
 Phone: (661) 869-0184 Fax: (661) 377-0076

REGISTERED PROFESSIONAL ENGINEER MATTHEW K. NOVILLA RCE 43130 Exp. 3-31-10 CIVIL ENGINEER STATE OF CALIFORNIA	DATE
REVISIONS	
MATTHEW K. NOVILLA	
RCE 43130 EXP. 3/31/10	

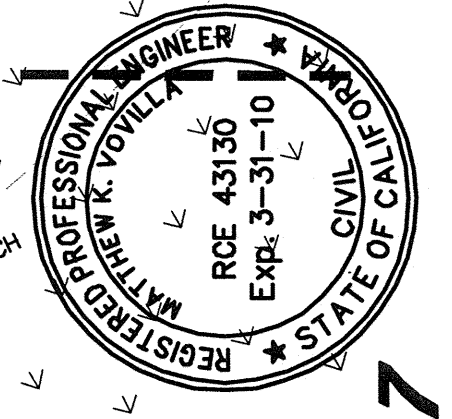
DEMOLITION PLAN
MUNSEY ELEMENTARY
3801 BRAVE AVENUE
BAKERSFIELD, CALIFORNIA

JOB NO.:	09-388
DWG NO.:	09-388-BM
DATE:	09/23/2009
DRAWN BY:	ADK
CHECKED BY:	MKV
SHEET	5
OF 8 SHEETS	

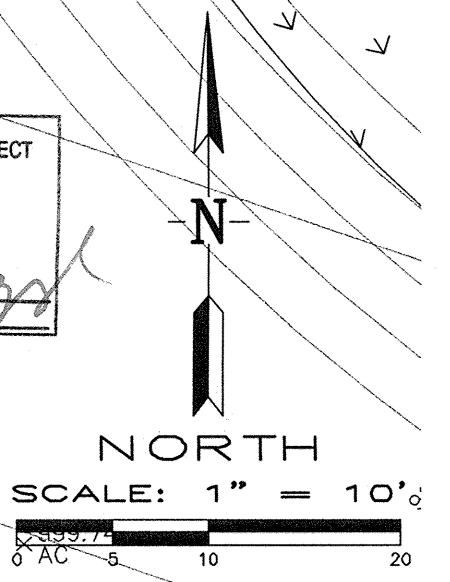
BELLE TERRACE



**SEE SHEET 7 FOR LEGEND,
SHEET 3 FOR NOTES**



IDENTIFICATION STAMP
DIV. OF THE STATE ARCHITECT
CZ-112985
AC FLB SS
DATED 2-1-2009



Pinnacle Civil Engineering, Inc.
2161 Saturn Court, Bakersfield, CA 93308
Phone: (661) 869-0184 Fax: (661) 377-0076

DATE	
REVISIONS	
MATTHEW K. YOVILLA	RCE 43130 EXP. 3/31/10

**SITE IMPROVEMENT & GRADING PLAN
MUNSEY ELEMENTARY
3801 BRAVE AVENUE
BAKERSFIELD, CALIFORNIA**

JOB No.:	09-388
DWG NO.:	09-388-BM
DATE:	09/23/2009
DRAWN BY:	ADK
CHECKED BY:	MKV
SHEET	6
OF 8 SHEETS	

SEE SHEET 7

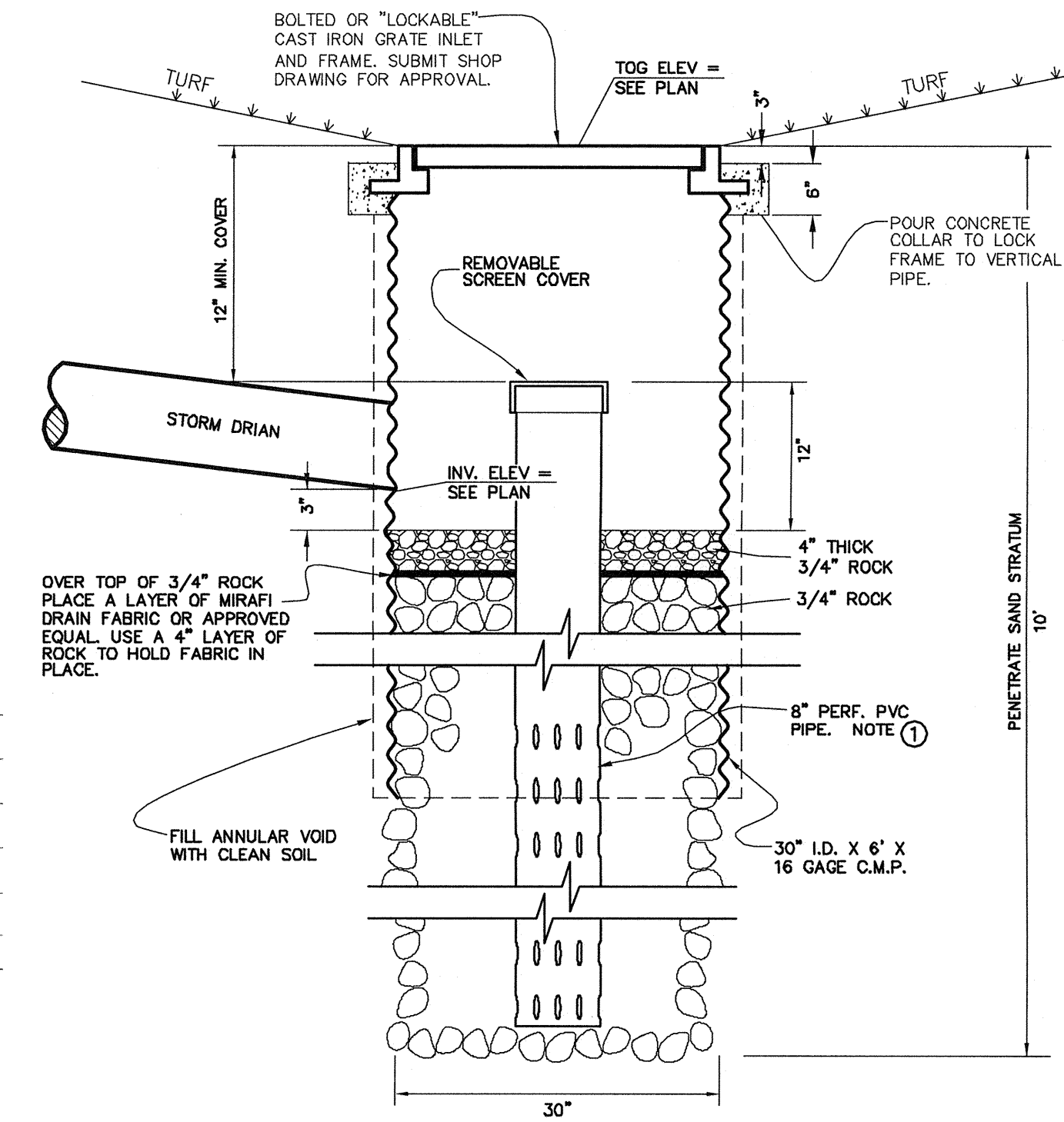
CONSTRUCTION LEGEND

- = NEW AC PAVEMENT
- = NEW CONCRETE
- SEE SHEET 5 FOR EXISTING CONDITIONS AND LEGEND
- = PROPOSED DRAINAGE INLET
- = DESIGN SLOPE
- = SAWCUT LINE
- = PROPOSED STORM DRAIN
- = CONSTRUCTION NOTE - SEE SHEET 3
- = EXISTING GROUND CONTOUR
- = EXISTING ELEVATION
- = PATH OF DRAINAGE

- TG = TOP OF GRATE INLET
- FL = FLOWLINE
- GB = GRADE BREAK
- TC = TOP OF CURB
- TOC = TOP OF CONCRETE FLAT WORK
- MIN = MINIMUM
- AC = ASPHALT CONCRETE
- BW = BACK OF WALK
- EX = EXISTING
- HP = HIGH POINT
- INV = INVERT
- FS = FINISHED SURFACE
- LP = LIP OF V-GUTTER
- CONC = PORTLAND CEMENT CONCRETE
- S = SLOPE

NOTES - STORM WATER DETENTION AREA

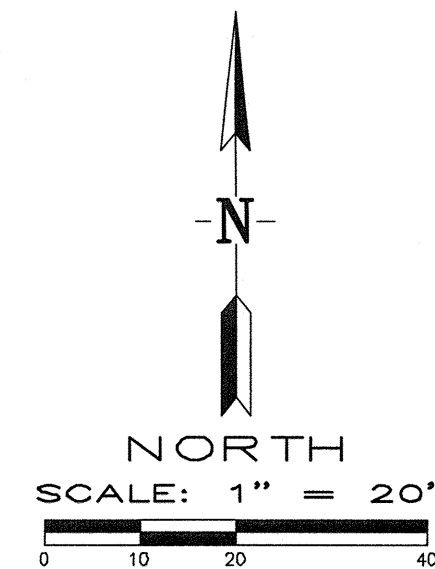
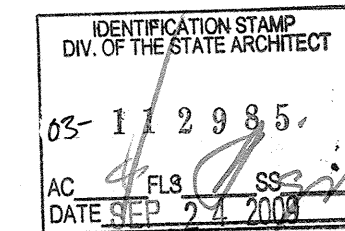
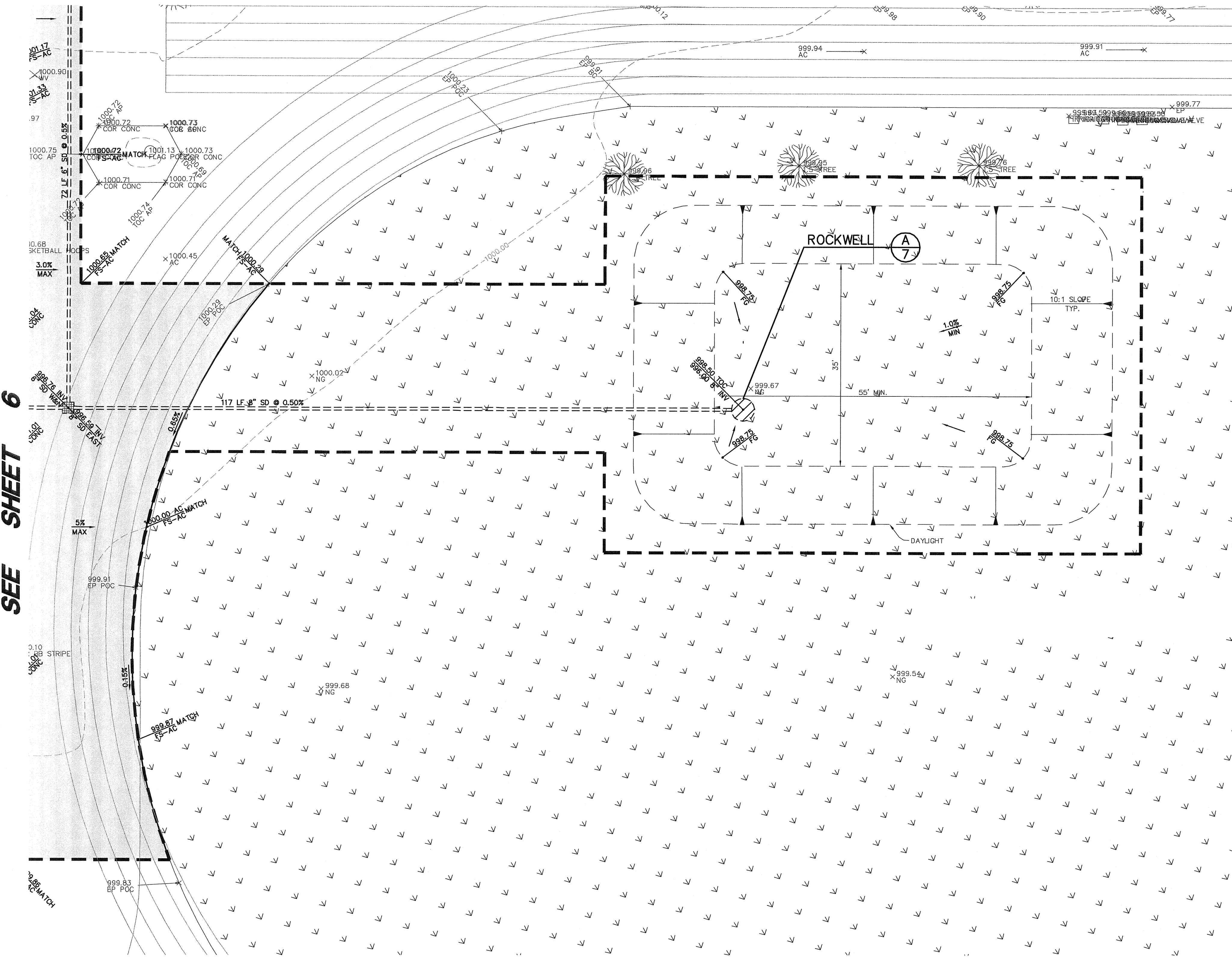
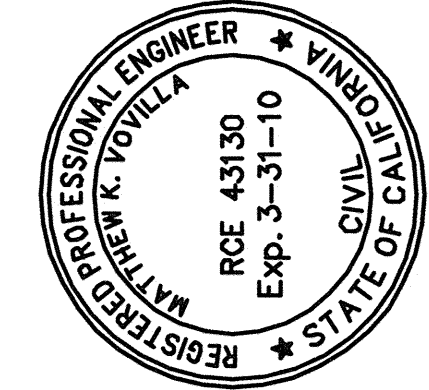
- ① CONTRACTOR SHALL REMOVE SOD AND STORE ON SITE.
- ② CUT AND CAP ANY EXISTING IRRIGATION WITHIN LIMITS OF EXCAVATION AND REMOVAL.
- ③ THE DISTRICT WILL BE RESPONSIBLE FOR REINSTALLATION OF IRRIGATION.
- ④ CONTRACTOR SHALL RE-PLACE SOD AFTER THE DISTRICT COMPLETES IRRIGATION MODIFICATION.



ROCKWELL DETAIL NOTES

- ① EXTEND CENTER PIPE OF ROCKWELL TO BOTTOM OF BORING. CENTER PIPE SHALL BE DR64 WITH GLUED JOINTS. PORTION OF PIPE ABOVE ROCK SHALL NOT BE PERFORMED.

A
7 DETAIL - ROCKWELL
N.T.S.



Pinnacle Civil Engineering, Inc.
2161 Saturn Court, Bakersfield, CA 93308
Phone: (661) 869-0184 Fax: (661) 377-0076

REVISIONS	DATE

**STORM WATER DETENTION AREA
MUNSEY ELEMENTARY
3801 BRAVE AVENUE
BAKERSFIELD, CALIFORNIA**

JOB NO.:	09-388
DWG NO.:	09-388-BM
DATE:	09/23/2009
DRAWN BY:	ADK
CHECKED BY:	MKV
SHEET	7
OF 8 SHEETS	

SEE SHEET 6