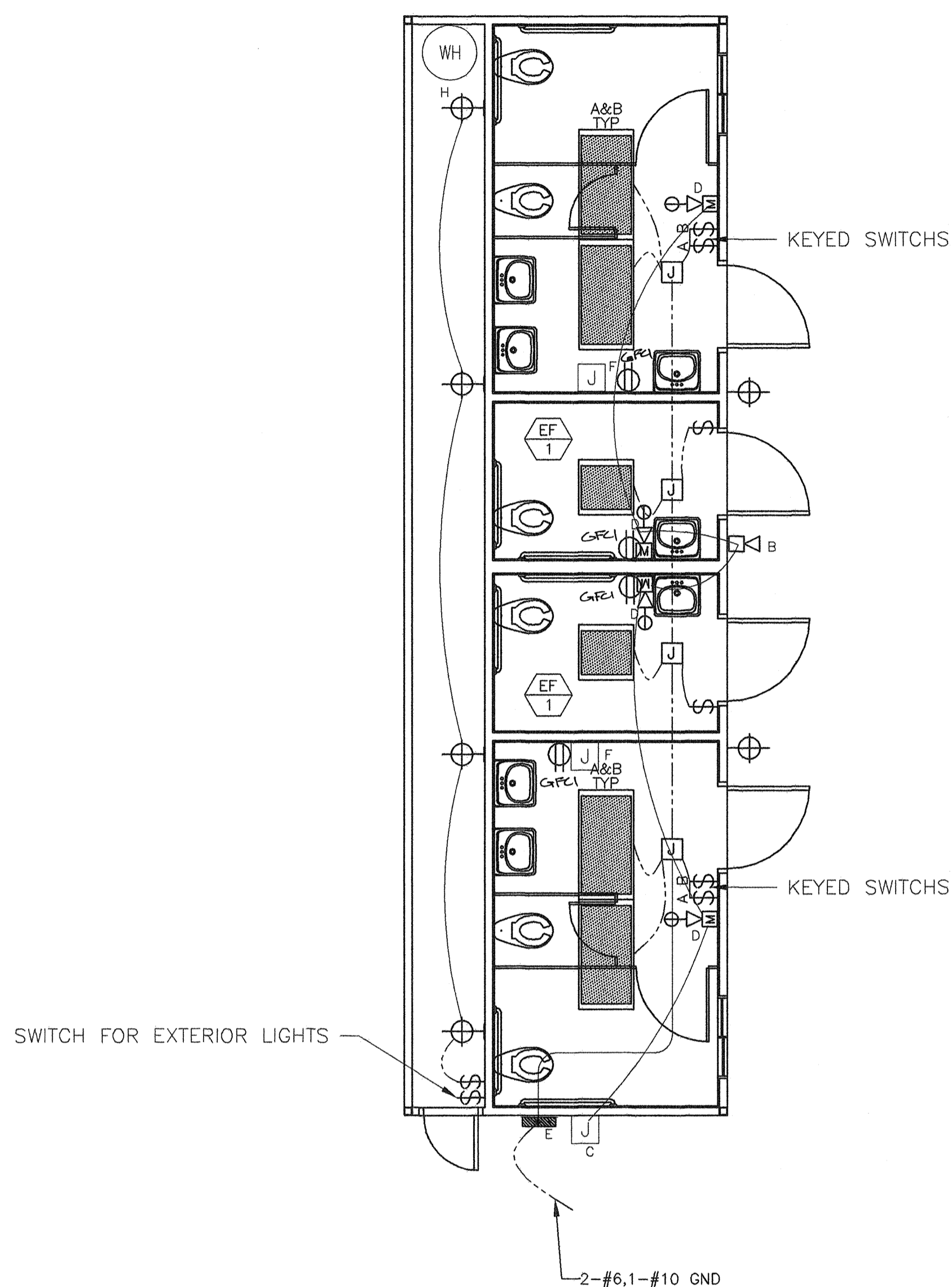


STANDARD ELECTRICAL SYMBOLS

	EXIT LIGHT WHERE TWO OR MORE EXITS ARE REQUIRED
	INCANDESCENT WALL MOUNTED INTERIOR LIGHT FIXTURE
	DUPLEX WALL CONVENIENCE OUTLETS ● +18" TO CENTER LINE ABOVE F.F. AND 12'-0" MAX TYP U.O.N.
	FOURPLEX WALL OUTLET ● +18" TO CENTER LINE U.O.N.
	WEATHER PROOF GROUND FAULT CIRCUIT INTERRUPT OUTLET
	GROUND FAULT CIRCUIT INTERRUPT OUTLET
	SINGLE POLE LIGHT SWITCHES ● +48", HUBBELL PREMIUM, BRYANT HEAVY DUTY, OR LEVITON SPECIFICATIONS GRADE.
	ELECTRICAL CROSSOVER J-BOXES ABOVE T-BAR CEILING #1-4"X1", #22 4"X2"
	CLOCK/SPEAKER COMBO ● +90"
	SWITCH SUBSCRIPTS - ○=DEVICE CONTROLLED.
	JUNCTION BOX - SIZE AND TYPE AS REQUIRED.
	SPEAKER- OUTLET ONLY - 4" SQ. BOX W/ DEVICE RING AND COVER +84"
	DATA/COMMUNICATION OUTLET ONLY- 4" SQ. BOX W/ SINGLE DEVICE RING AND COVER +18" U.O.N. AND A 3/4" CONDUIT STUB CEILING SPACE.
	INTERCOM TELEPHONE- OUTLET ONLY- 4" SQ. BOX W/ SINGLE DEVICE RING AND COVER +48" U.O.N.
	MOTION SENSOR OUTLET STUB-UP -PROVIDE (1)4" SQ. BOX W/ SINGLE DEVICE RING AND COVER AND ONE 3/4" CONDUIT STUB TO ABOVE CEILING (DEVICES BY OTHERS)
	SECURITY/INTRUSION KEY PAD - OUTLET ONLY- 4" SQ. BOX W/ SINGLE DEVICE RING AND COVER ● +48" AND ONE 3/4" CONDUIT STUB ABOVE CEILING
	DOOR CONTACT - PROVIDE (1) EMPTY 1/2"Ø EMT THROUGH DOOR HEADER STUB ABOVE CEILING
	CATV OUTLET STUB-UP -PROVIDE (1)4" SQ. BOX W/ SINGLE DEVICE RING AND COVER AND(1) 3/4"Ø CONDUIT TO ABOVE CEILING (DEVICES BY OTHERS)
	FIRE ALARM PULL STATION - OUTLET ONLY, 4" SQ. BOX W/ SINGLE DEVICE RING AND COVER +48". (DEVICE N.I.C.)
	FIRE ALARM HORN - OUTLET ONLY - 4" SQ. SINGLE GANG J-BOX WITH BLANK WEATHERPROOF COVER ● +90" MIN (DEVICE N.I.C.)
	FIRE ALARM VISUAL ALARM- OUTLET ONLY - 4" SQ. BOX W/ SINGLE DEVICE RING AND COVER +80". A.F.F. BUT NO GREATER THAN +96". IF CEILING MOUNTED PER NFPA72 TABLE 6-4.4.1(b).
	MINI HORN BOX W/ SINGLE DEVICE RING AND COVER ● +80"A.F.F. BUT NO GREATER THAN +96". STUB TO ATTIC
	THERMOSTAT ● +60" SEALED, +48" A.F.F UNSEALED
	ULTRASONIC OCCUPANCY SENSOR
	ELECTRICAL PANEL



3 TYPICAL ELECTRICAL PLAN
E1 1/4"=1'-0"

- B. EXTERIOR 4 SQ. J-BOX (FIRE ALARM HORN) INSTALL AT +90" FROM FINISHED FLOOR.
- C. J-BOX ONLY (FIRE ALARM TIE-IN) INSTALL 4" SQ. BOX, 2 GANG RING WITH 1" CONDUIT TO ABOVE CEILING. TIE TO 3/4" CONDUIT AS SHOWN ON PLAN FOR FIRE ALARM DEVICES.
- D. 4" SQ. J-BOX (FIRE ALARM HORN/STROBE).
- E. ELECTRICAL SERVICE TIE-IN LOCATION.
- F. 4" J-BOX MOUNTED AT +36" TO CENTER WITH 230 V. POWER FOR DISTRICT SUPPLIED HAND DRYERS.
- G. EXTERIOR ENERGY SAVING LIGHT FIXTURE, STANDARD LIGHT SWITCH LOCATED IN PLUMBING CHASE. IDENTIFY SWITCH AS SUCH.
- H. 6 GALLON 120V ELECTRIC WATER HEATER. MOUNT ON WALL AS HIGH AS POSSIBLE WITH dsa APPROVED PLATFORM AND SAFETY STRAP.

NOTE:
AT ANY SPACE REQUIRING 2 OR MORE EXITS PROVIDE EXIT SIGNS (CBC 1011) AND EMERGENCY EXIT ILLUMINATION (CBC 1006)

NOTE:
THE PROJECT ARCHITECT SHALL BE RESPONSIBLE FOR THE PLACEMENT OF HEAT, SMOKE DETECTORS AND PULL STATIONS WHEN THE SITE SPECIFIC PROJECT IS REQUIRED TO MEET THE PROVISIONS OF SB 575 & CBC 907.2.3

SYMBOL	DESCRIPTION	WATTS	MANUFACTURER
	2'X4' FLOURESCENT DROP IN FIXTURE, ACRYLIC PRISMATIC LENS. T-8 ELECTRONIC BALLASTS (3)32 WATT TUBES, WT. 27 LBS.	SP41 32 W	CRESCENT 24GP40HFA1158YF2 OR LITHONIA 2GT440A12120ESPWS1846LPESCW
	FLOURESCENT SURFACE MOUNTED EXTERIOR LIGHT WITH IMPACT RESISTANT ENCLOSURE. .125 THICK CLEAR PRISMATIC ONE PIECE LENS W/ NEOPRENE GASKET & POSIGRIP STAINLESS STEEL SCREWS. (PROVIDE EMERGENCY BATTERY BACK-UP WHERE TWO OR MORE EXITS OCCUR.)	(2) 7W TT 2700 K	ENERTRON 7026B-L OR EQUAL

- GENERAL NOTES -**
- F.A. : STUB-UP ALL FIRE ALARM JUNCTION BOXES TO ACCESSIBLE ATTIC SPACE WITH 1/2" MIN. GALV. THIN WALL TUBING (EMT). DO NOT CONNECT FIRE ALARM CONDUIT WITH ANY OTHER ELECTRICAL CONDUIT
 - IF OPTIONAL DOOR OCCURS A PULL STATION J-BOX AND EXIT SIGN ARE REQUIRED. PULL STATIONS ARE REQUIRED ● EVERY EXIT
 - STUB OUT LOCATIONS FOR ELECTRICAL PANEL, FIRE ALARM, AND DATA BOXES SHOWN ARE DIAGRAMITICAL ONLY EXACT LOCATIONS MAY VARY +/- SEVERAL FEET. PLEASE CONTACT AMERICAN MODULAR SYSTEMS FOR EXACT LOCATIONS. POINT OF CONNECTION WILL BE AT FACE OF BUILDING.
 - SEE TYPICAL CLASSROOM LAYOUT FOR LOCATIONS OF ALL DEVICES. FIXTURE MOUNTING SHALL COMPLY WITH CALIFORNIA SEISMIC REGULATIONS.
 - THE LIGHTS FOR EACH ROOM OVER 250' SQ FT SHALL BE CONTROLLED BY ULTRASONIC OCCUPANCY SENSOR, WATT STOPPER W-500A, W-1000A,OR W-2000A (OR EQUAL) BASED ON THE ROOM SIZE IN CONJUNCTION WITH BI-LEVEL SWITCHING.

BASED ON PC# 02-109808

REVISIONS

NO	DATE	DESCRIPTION

DATE: 01/14/10
SCALE: NOTED
DRAWN BY: RS
SERIAL NO.:

CUSTOMER:
BAKERSFIELD SCHOOL DISTRICT
MUNSEY ELEMENTARY SCHOOL

12'X40' RELOCATABLE BUILDING
TYPICAL ELECTRICAL PLAN & NOTES



APPROVALS:



IDENTIFICATION STAMP
DIV. OF THE STATE ARCHITECT
OFFICE OF REGULATION SERVICES

03-11-2015
AC, FLS, SS
DATE 2/10/10

PROJECT No.
E1

THESE DRAWINGS AND SPECIFICATIONS ARE THE PROPERTY OF AMERICAN MODULAR SYSTEMS, INC. AND ARE NOT TO BE REPRODUCED, CHANGED OR COPIED IN ANY FORM OR MANNER, NOR ARE THEY TO BE ASSIGNED TO ANY THIRD PARTY WITHOUT THE WRITTEN AUTHORIZATION OF AMERICAN MODULAR SYSTEMS, INC.