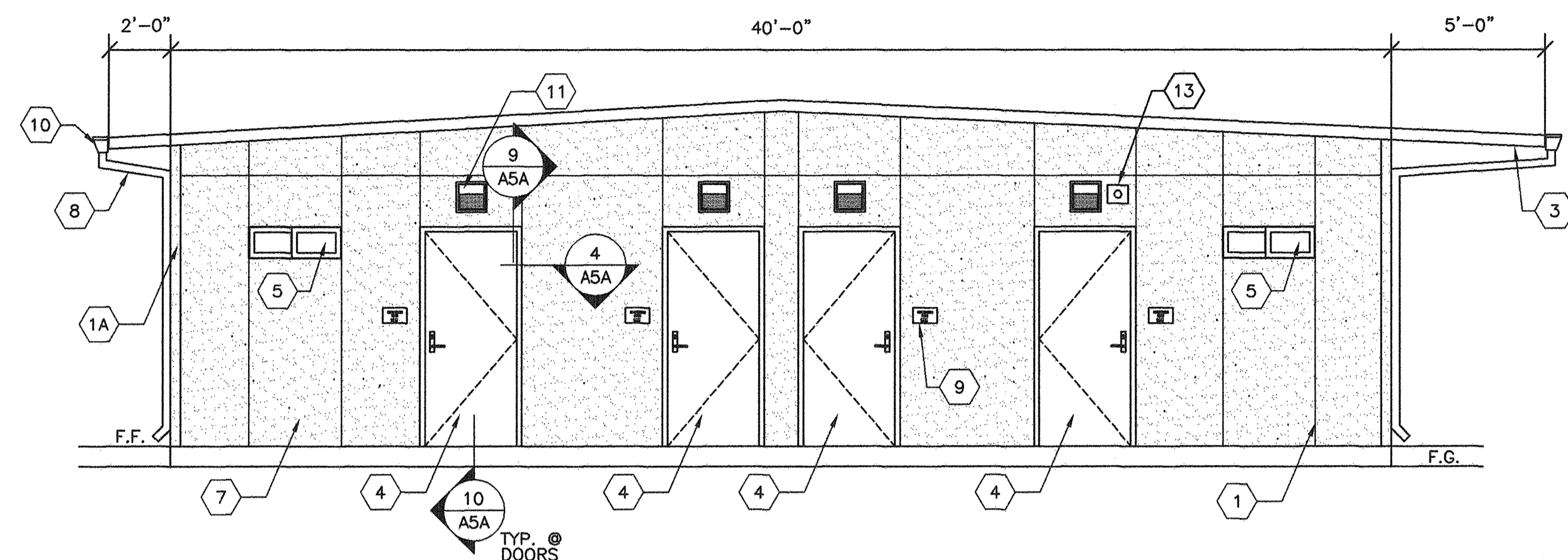


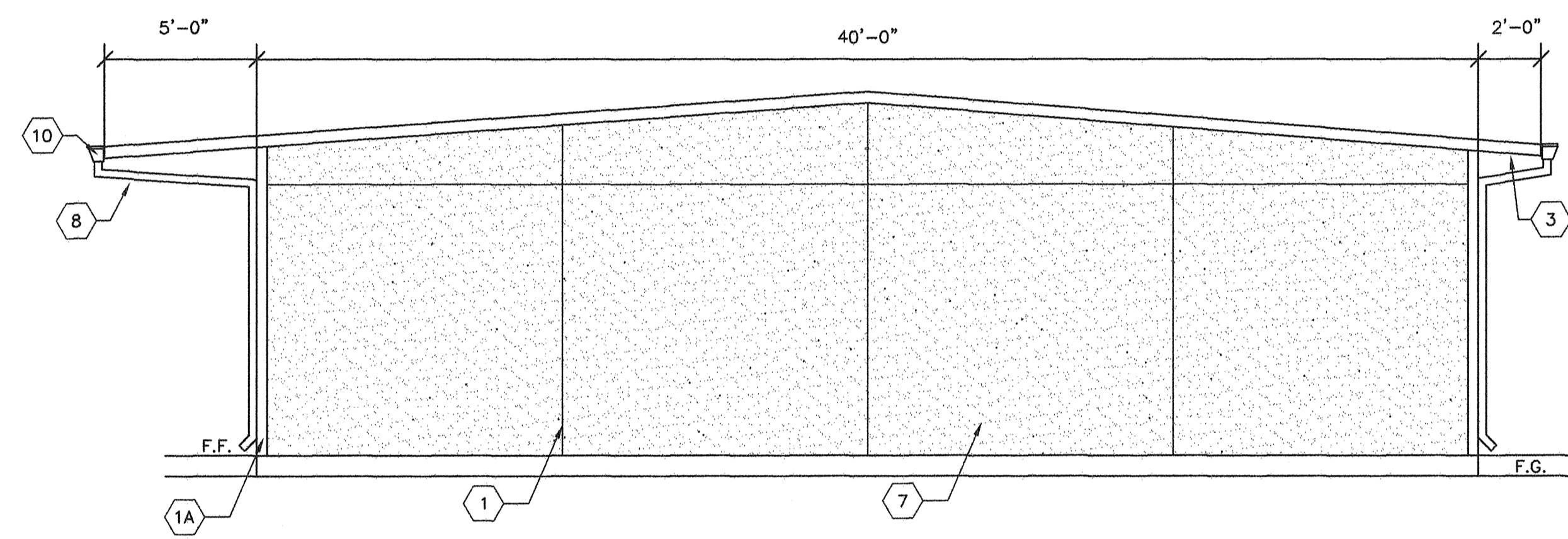
- SHEET NOTES -

- 1 CONTROL JOINT (LOCATIONS MAY VARY)
- 1A 16 GA. FLASHING TRIM @ MODLINES TYP.
- 2 STANDING SEAM METAL ROOFING
- 3 OVERHANG
- 4 TYPICAL EXTERIOR DOOR
- 5 WINDOW SEE SPEC'S
- 6 HVAC UNIT TYP.
- 7 ACRYLIC TEXTURED FINISH OVER HARDI-BOARD
- 8 DOWNSPOUT (QUANTITY & LOCATION MAY VARY)
- 9 ROOM ID SIGNAGE (NIC) TYP REFER TO DETAIL 5/AD
- 10 GUTTER
- 11 EXTERIOR LIGHT FIXTURE TYP
- 12 MODULAR IDENTIFICATION TAG, +90" ABOVE F.F.
- 13 FIRE ALARM HORN (REFER TO E1)
- 14 WP/G.F.C.I. TYP. @ HVAC UNITS SEE ELECTRICAL SHEETS.

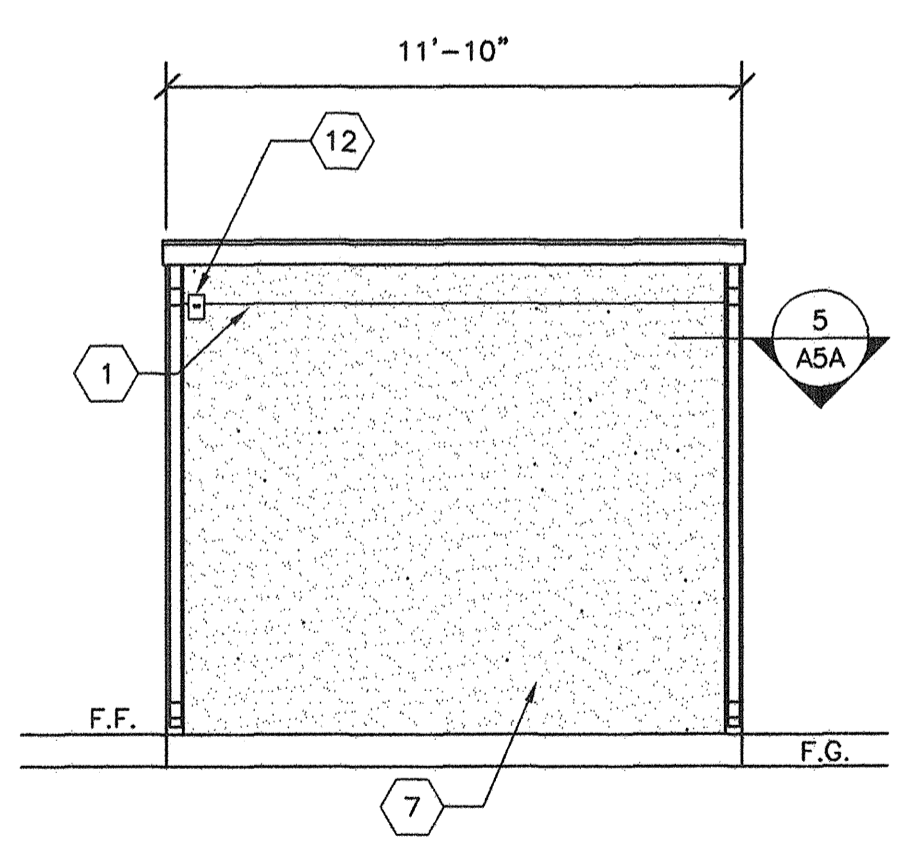
R RAMP NOT SHOWN FOR RAMP DETAILS REFER TO SHEET S6R



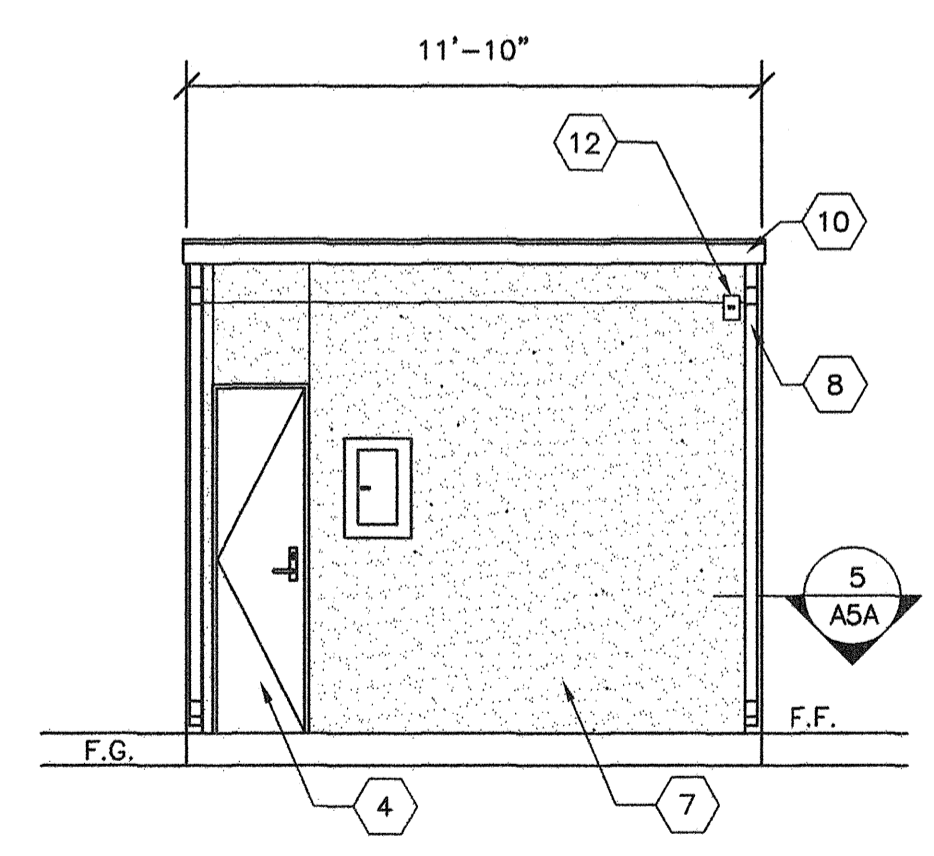
A FRONT EXTERIOR ELEVATION
A5 1/4"=1'-0"



D REAR EXTERIOR ELEVATION
A5 1/4"=1'-0"



G SIDE EXTERIOR ELEVATION
A5 1/4"=1'-0"



H SIDE EXTERIOR ELEVATION
A5 1/4"=1'-0"

BASED ON PC# 02-109808

REVISIONS		
NO	DATE	DESCRIPTION

DATE: 01/12/10
SCALE: NOTED
DRAWN BY: RS
SERIAL NO.:

CUSTOMER:
BAKERSFIELD SCHOOL DISTRICT
MUNSEY ELEMENTARY SCHOOL

12'X40' RELOCATABLE BUILDING
TYPICAL EXTERIOR ELEVATIONS (SYNT. STUCCO OPTION)

AMS
American Modular Systems Inc.
787 Spreckels Ave. Manteca, CA 95336
(209)925-1921 Fax: (209)925-7018
americanmodular.com

APPROVALS:

Professional Engineer Seal for State of California, No. C12631, Ren. 3.3.11

IDENTIFICATION STAMP
DIV. OF THE STATE ARCHITECT
OFFICE OF REGULATION SERVICES
03-112985
AC, FLS, SS
DATE 2/18/10

PROJECT No.
A5

THESE DRAWINGS AND SPECIFICATIONS ARE THE PROPERTY OF AMERICAN MODULAR SYSTEMS, INC. AND ARE NOT TO BE REPRODUCED, CHANGED OR COPIED IN ANY FORM OR MANNER, NOR ARE THEY TO BE ASSIGNED TO ANY THIRD PARTY WITHOUT THE WRITTEN AUTHORIZATION OF AMERICAN MODULAR SYSTEMS, INC.