

NOTES:
 1. FOR OUTDOOR PANEL MOUNTING, CONCRETE PAD SHALL BE 6" WIDER THAN PANEL HOUSING. TOP OF SLAB SHALL BE 2" ABOVE ADJACENT GRADE.

CODE REQUIREMENTS

PERFORMANCE OF THE WORK OF THIS CONTRACT SHALL CONFORM TO THE REQUIREMENTS OF APPLICABLE GOVERNING CODES AND ORDINANCES INCLUDING THE FOLLOWING:

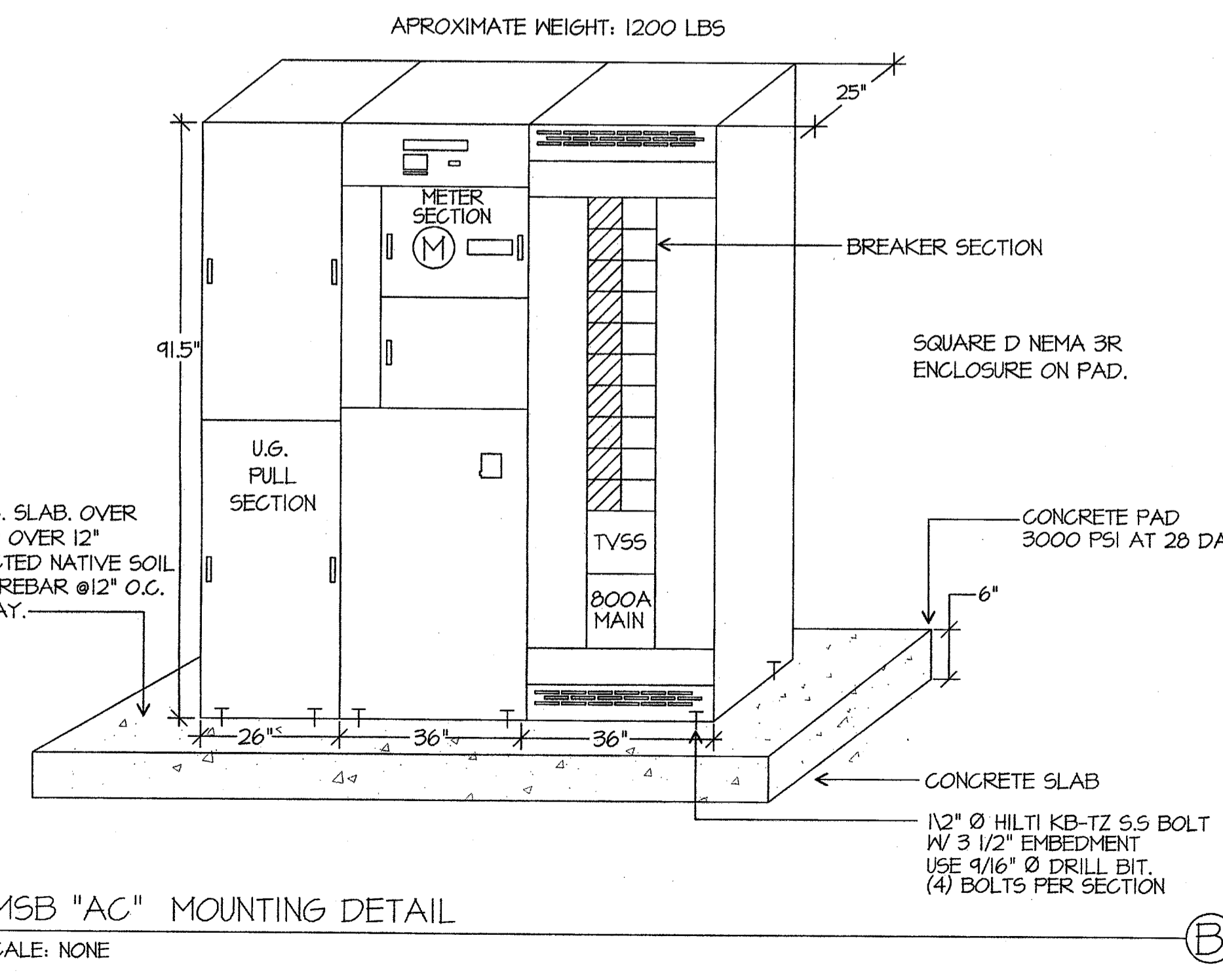
2007	BUILDING STANDARDS ADMINISTRATIVE CODE, PART 1, TITLE 24, C.C.R.
2007	CALIFORNIA BUILDING CODE, PART 2, TITLE 24 C.C.R. (2006 IBC, VOLUMES 1-3 WITH CALIFORNIA AMENDMENTS)
2007	CALIFORNIA ELECTRICAL CODE, PART 3, TITLE 24 C.C.R. (2005 N.E.C. WITH CALIFORNIA AMENDMENTS)
2007	CALIFORNIA MECHANICAL CODE, PART 4, TITLE 24 C.C.R. (2006 U.M.C. WITH CALIFORNIA AMENDMENTS)
2007	CALIFORNIA PLUMBING CODE, PART 5, TITLE 24 C.C.R. (2006 U.P.C. WITH CALIFORNIA AMENDMENTS)
2007	CALIFORNIA ENERGY CODE, PART 6, TITLE 24 C.C.R.
2007	CALIFORNIA FIRE CODE, PART 9, TITLE 24 C.C.R. (2006 I.F.C. WITH CALIFORNIA AMENDMENTS)
2007	CALIFORNIA REFERENCED STANDARDS, PART 12, TITLE 24 C.C.R. TITLE 19 C.C.R. PUBLIC SAFETY, STATE FIRE MARSHAL REGULATIONS.
NFPA 13	AUTOMATIC SPRINKLER SYSTEM -----2002 EDITION
NFPA 14	STANDPIPE SYSTEM -----2003 EDITION
NFPA 17A	WET CHEMICAL SYSTEM -----2002 EDITION
NFPA 24	PRIVATE SERVICE MAINS -----2002 EDITION
NFPA 72	NATIONAL FIRE ALARM CODE -----2002 EDITION (NOTE SEE UL STANDARDS 1971 FOR ("VISUAL DEVICES"))

GENERAL NOTES

- VISIT JOB SITE AND VERIFY EXISTING CONDITIONS PRIOR TO BID.
- THE ELECTRICAL WORK SHALL BE INSTALLED IN ACCORDANCE WITH THE NATIONAL ELECTRICAL CODE AND ALL APPLICABLE LOCAL ORDINANCES, WHERE PLANS CALL FOR A HIGHER STANDARD THAN APPLICABLE CODES, THE PLANS SHALL GOVERN.
- CONDUIT RUNS ARE SHOWN DIAGRAMMATICALLY. EXACT LOCATIONS SHALL BE DETERMINED IN THE FIELD TO SUIT FIELD CONDITIONS.
- ALL ELECTRICAL EQUIPMENT, APPLIANCES AND LIGHTING FIXTURES SHALL BE LISTED BY A RECOGNIZED TEST LAB AND BEAR THAT LABEL OF APPROVAL.
- CONTRACTOR SHALL FURNISH, INSTALL AND CONNECT ALL MATERIAL AND EQUIPMENT FOR THIS WORK UNLESS OTHERWISE NOTED.
- FURNISH DISCONNECT SWITCHES AT REMOTE MOTORS.
- ALL SPACES AS INDICATED ON PANELS OR SWITCHBOARD SHALL BE COMPLETE WITH HARDWARE AND BUSSING FOR FUTURE BREAKER OR SWITCH.
- CHECK ARCHITECTURAL PLANS FOR DOOR SWINGS BEFORE INSTALLING SWITCH OUTLETS.
- GROUNDING AND BONDING SHALL BE PER CODE PLUS ANY ADDITIONAL PROVISIONS SPECIFIED OR SHOWN ON DRAWINGS.
- ALL CONDUIT RUNS SHALL CONTAIN A CODE SIZED GROUND CONDUCTOR.
- THESE PLANS ARE NOT COMPLETE UNTIL APPROVED BY THE AUTHORITY HAVING JURISDICTION.
- ALL CONDUCTORS SHALL BE IN CONDUIT.
- ALL CONDUCTORS SHALL BE COPPER WITH TYPE THHN/THWN INSULATION.

SYMBOLS

- CONDUIT EXISTING
 - CONDUIT CONCEALED IN WALL OR CEILING
 - CONDUIT CONCEALED UNDER FLOOR OR BELOW GRADE
 - CONDUIT STUBBED OUT AND CAPPED
 - CONDUIT TURNED UP
 - CONDUIT TURNED DOWN
 - ≡≡≡ HATCH MARKS INDICATE NO. OF #12 WIRES IN CODE SIZED CONDUIT (3) MAX. IN 1/2" C., (5) MAX. IN 3/4" C., (8) MAX. IN 1" C., NO MARKS = 2#12
 - A-3 HOME RUN: LETTER INDICATES PANEL, NUMBER(S) INDICATES CIRCUIT(S).
 - ≡≡≡ SAWCUT
 - ⊕ GROUND CONNECTION
 - ▨ DISTRIBUTION SWITCHBOARD OR PANEL
 - ▨ PANEL, BRANCH CIRCUIT TYPE, SURFACE AND FLUSH SIGNAL TERMINAL CABINET, SURFACE & FLUSH
 - FLUORESCENT FIXTURE
 - OUTLET DATA: BAR INDICATES WALL MOUNT, LETTER INDICATES SWITCH CONTROL, NO. INDICATES CIRCUIT. SURFACE FIXTURE ON FLUSH OUTLET.
 - ⊗ RECESSED FIXTURE WITH JUNCTION BOX FOR THRU WIRING
 - ⊗ EXIT LIGHT WITH ARROWS AS SHOWN ON PLANS, WALL AND CEILING MOUNT.
 - ⊗ LOW LEVEL EXIT SIGN, +6" AFF, +4" FROM DOOR JAMB
 - ⊗ LIGHT FIXTURE DESIGNATION, LETTER INDICATES TYPE, NO. INDICATES WATTAGE. SEE FIXTURE SCHEDULE.
 - ⊗ MECHANICAL EQUIPMENT DESIGNATION. SEE MECHANICAL DRAWINGS.
 - ⊗ SPECIAL RECEPTACLE - SEE PLAN
 - ⊗ METER
 - ⊗ FLUSH FLOOR RECEPTACLE
 - ⊗ RECEPTACLE, DUPLEX, 15A, 125V, NEMA 5-15R +18" U.N.O.
 - ⊗ DUPLEX RECEPTACLE MTD. ABOVE BACKSPLASH
 - ⊗ DUPLEX RECEPTACLE W/LOWER HALF SWITCHED
 - ⊗ GFI GROUND FAULT CIRCUIT INTERRUPTING RECEPTACLE
 - ⊗ DOUBLE DUPLEX RECEPTACLE
 - ⊗ CEILING RECEPTACLE
 - ⊗ RECEPTACLE, DUPLEX, 20A, 125V, NEMA 5-20R +18" U.N.O.
 - ⊗ JUNCTION BOX 4" SQUARE, 1-1/2" DEEP U.N.O.
 - ⊗ THERMOSTAT F.B.O. +48"
 - ⊗ MOTOR, NO. INDICATES HORSEPOWER
 - ⊗ CLOCK OUTLET +7"-6" U.N.O.
 - ⊗ DISCONNECT SWITCH, NON-FUSED
 - ⊗ DISCONNECT SWITCH FUSED HORSEPOWER RATED OR SIZED AS NOTED
 - ⊗ COMBINATION MAGNETIC STARTER WITH DISCONNECT SWITCH AND FUSES
 - ⊗ MAGNETIC MOTOR STARTER W/OVERLOADS IN EACH PHASE
 - ⊗ RECESSED SPEAKER
 - ⊗ PUSHBUTTON
 - ⊗ PHOTOCELL
 - ⊗ SMOKE DETECTOR
 - ⊗ TELEPHONE/COMPUTER/DATA OUTLET, TWO GANG BOX W/1 GANG COVERPLATE & GROMMETTED OPENING +18" U.N.O.
 - ⊗ CABLE TV OUTLET +18" U.N.O.
 - ⊗ MOTION SENSOR
 - ⊗ EXISTING SWITCH
 - S SINGLE POLE SWITCH
 - S² DOUBLE POLE SWITCH
 - S³ THREE WAY SWITCH
 - S^P SWITCH W/PILOT LT.
 - S^M MANUAL MOTOR STARTER
 - FACP FIRE ALARM CONTROL PANEL
 - GFI GROUND FAULT CIRCUIT INTERRUPTING
 - LST LABOR SAVING TANDEM
 - MLO MAIN LUGS ONLY
 - W/ WITH
 - C.O. CONDUIT ONLY
 - W.P. WEATHERPROOF
 - F.B.O. FURNISHED BY OTHERS, INSTALL & CONNECT
 - U.N.O. UNLESS NOTED OTHERWISE
 - N.E.C. NATIONAL ELECTRICAL CODE
 - N.I.C. NOT IN CONTRACT
 - (E) EXISTING
 - (N) NEW
 - (R) REMOVE
 - (RL) RELOCATE
 - S/M SURFACE MOUNT
 - U/G UNDERGROUND
 - C/W COLD WATER PIPE
 - AFP ABOVE FINISHED FLOOR
 - HACR HEATING AND AIR CONDITIONING RATED CIRCUIT BREAKER
 - N.L. NIGHT LIGHT
- NOTE: NOT ALL SYMBOLS SHOWN ARE USED ON THIS PROJECT.



Ownership of Documents
 This document, the ideas and designs incorporated herein, as an instrument of Professional Service is the property of Integrated Designs by SOMAM, Inc. and is not to be used, in whole or in part for any other project without written authorization.
 © COPYRIGHT 2008

integrated designs by SOMAM, Inc.
 ARCHITECTURE • INTERIOR DESIGN • CONSTRUCTION MANAGEMENT
 6011 N. Fresno, Suite 130 - Fresno, California 93710
 Phone (559) 438-0881 Fax (559) 438-0887 E-Mail: design@somam.com
 www.integrateddesigns.com

Revision Description:
 10/15/09
 ADDENDUM 1

Project Name & Address:
MUNSEY ELEMENTARY SCHOOL
10 NEW PORTABLE CLASSROOMS
 BAKERSFIELD CITY SCHOOL DISTRICT
 3801 BRAVE AVE. BAKERSFIELD, CA 93309

Issue Date: 05/02/06
 Date: 05/02/06
 Designer: DESIGNER
 DR: DRAFTER
 PC: CJM

DSA Identification Stamp:
 Stamp(s):

Stamp:
 JIMPE
 REGISTERED PROFESSIONAL ENGINEER
 LICENSE NO. 51109
 STATE OF CALIFORNIA
 No. C 28966
 Exp. 5-31-09

Job No.: **3832**
 Sheet No.: **E-0**
 Release: **APPENDUM 1**
 CURTIS MCNALLY