

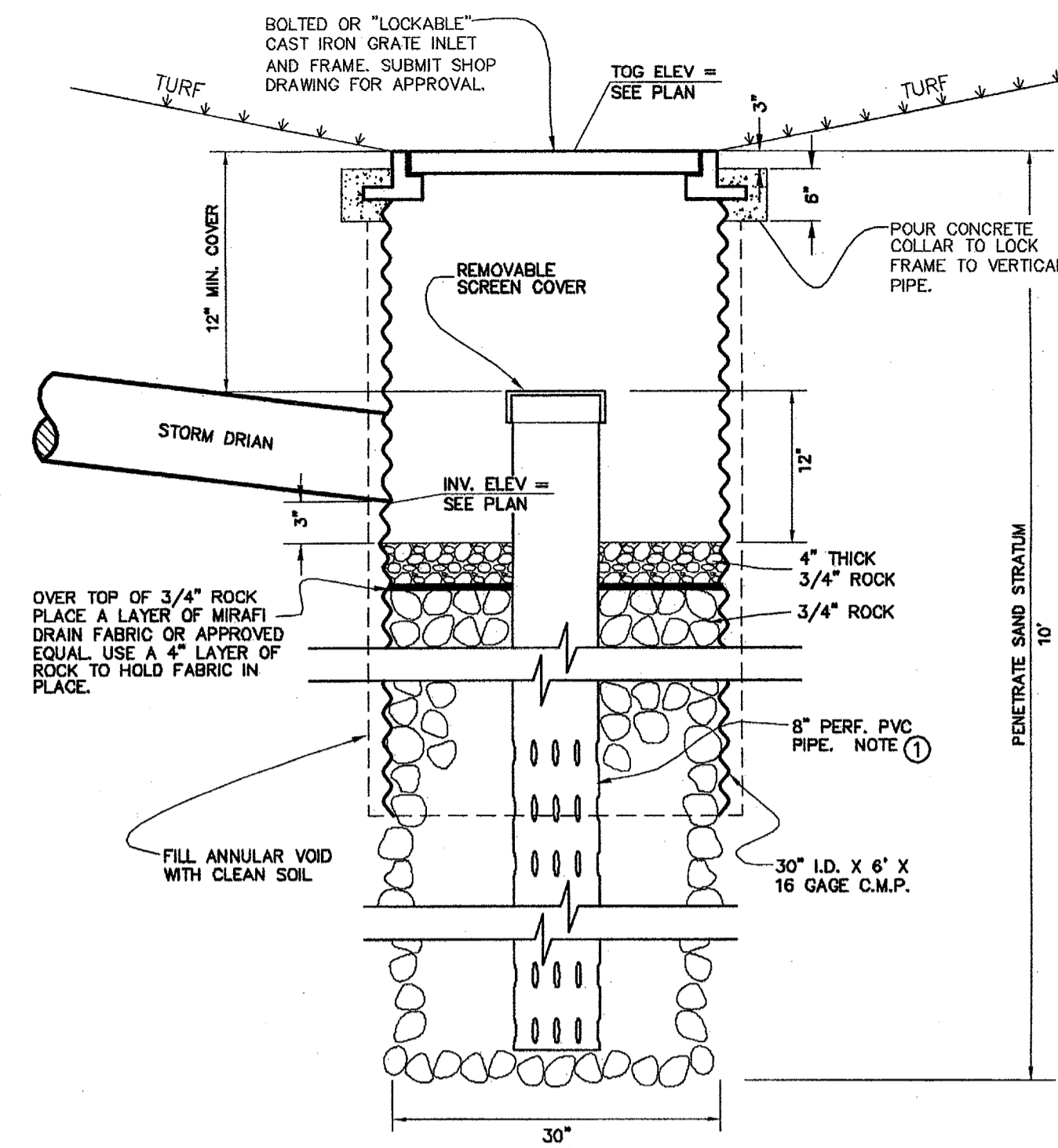
**CONSTRUCTION LEGEND**

- = NEW AC PAVEMENT
- = NEW CONCRETE
- SEE SHEET 5 FOR EXISTING CONDITIONS AND LEGEND
- = PROPOSED DRAINAGE INLET
- = DESIGN SLOPE
- = SAWCUT LINE
- = PROPOSED STORM DRAIN
- = CONSTRUCTION NOTE - SEE SHEET 3
- = EXISTING GROUND CONTOUR
- = EXISTING ELEVATION
- = PATH OF DRAINAGE
- = ELECTRIC PULL BOX, NOT A PART OF THESE PLANS. SEE ARCHITECT'S PLAN.

- TG = TOP OF GRATE INLET
- FL = FLOWLINE
- GB = GRADE BREAK
- TC = TOP OF CURB
- TOC = TOP OF CONCRETE FLAT WORK
- MIN = MINIMUM
- AC = ASPHALT CONCRETE
- BW = BACK OF WALK
- EX = EXISTING
- HP = HIGH POINT
- INV = INVERT
- FS = FINISHED SURFACE
- LP = LIP OF V-GUTTER
- CONC = PORTLAND CEMENT CONCRETE
- S = SLOPE
- FG = FINISH GRADE
- EP = EDGE OF PAVEMENT
- PB = PULL BOX

**NOTES - STORM WATER DETENTION AREA**

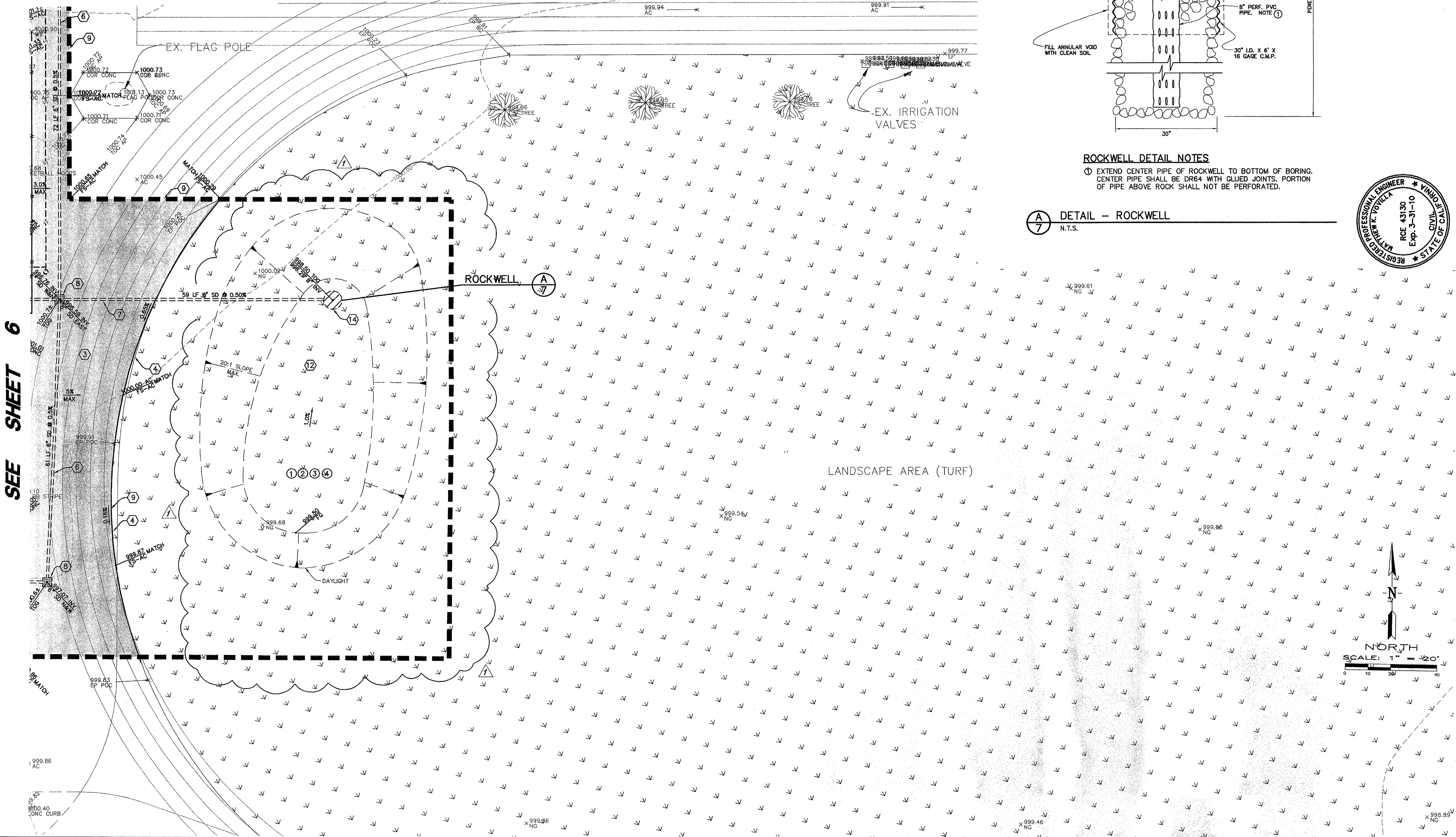
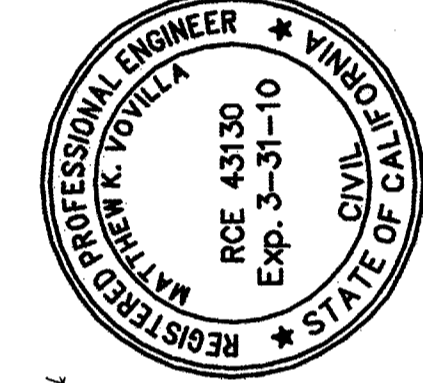
- ① CONTRACTOR SHALL REMOVE SOD AND STORE ON SITE.
- ② CUT AND CAP ANY EXISTING IRRIGATION WITHIN LIMITS OF EXCAVATION AND REMOVAL.
- ③ THE DISTRICT WILL BE RESPONSIBLE FOR REINSTALLATION OF IRRIGATION.
- ④ CONTRACTOR SHALL RE-PLACE SOD AFTER THE DISTRICT COMPLETES IRRIGATION MODIFICATION.



**ROCKWELL DETAIL NOTES**

- ① EXTEND CENTER PIPE OF ROCKWELL TO BOTTOM OF BORING. CENTER PIPE SHALL BE DR84 WITH GLUED JOINTS. PORTION OF PIPE ABOVE ROCK SHALL NOT BE PERFORMED.

**DETAIL - ROCKWELL**  
N.T.S.



SEE SHEET 6

**Pinnacle Civil Engineering, Inc.**

2161 Saturn Court, Bakersfield, CA 93308

Phone: (661) 869-0184 Fax: (661) 377-0076

REGISTERED PROFESSIONAL ENGINEER  
MATTHEW K. VOVILLA  
RCE 43130  
Exp. 3-31-10  
STATE OF CALIFORNIA

**STORM WATER DETENTION AREA  
MUNSEY ELEMENTARY  
3801 BRAVE AVENUE  
BAKERSFIELD, CALIFORNIA**

JOB NO.:	09-388
DWG NO.:	09-388-BM
DATE:	09/23/2009
DRAWN BY:	ADK
CHECKED BY:	MKY
SHEET:	7
OF 8 SHEETS	