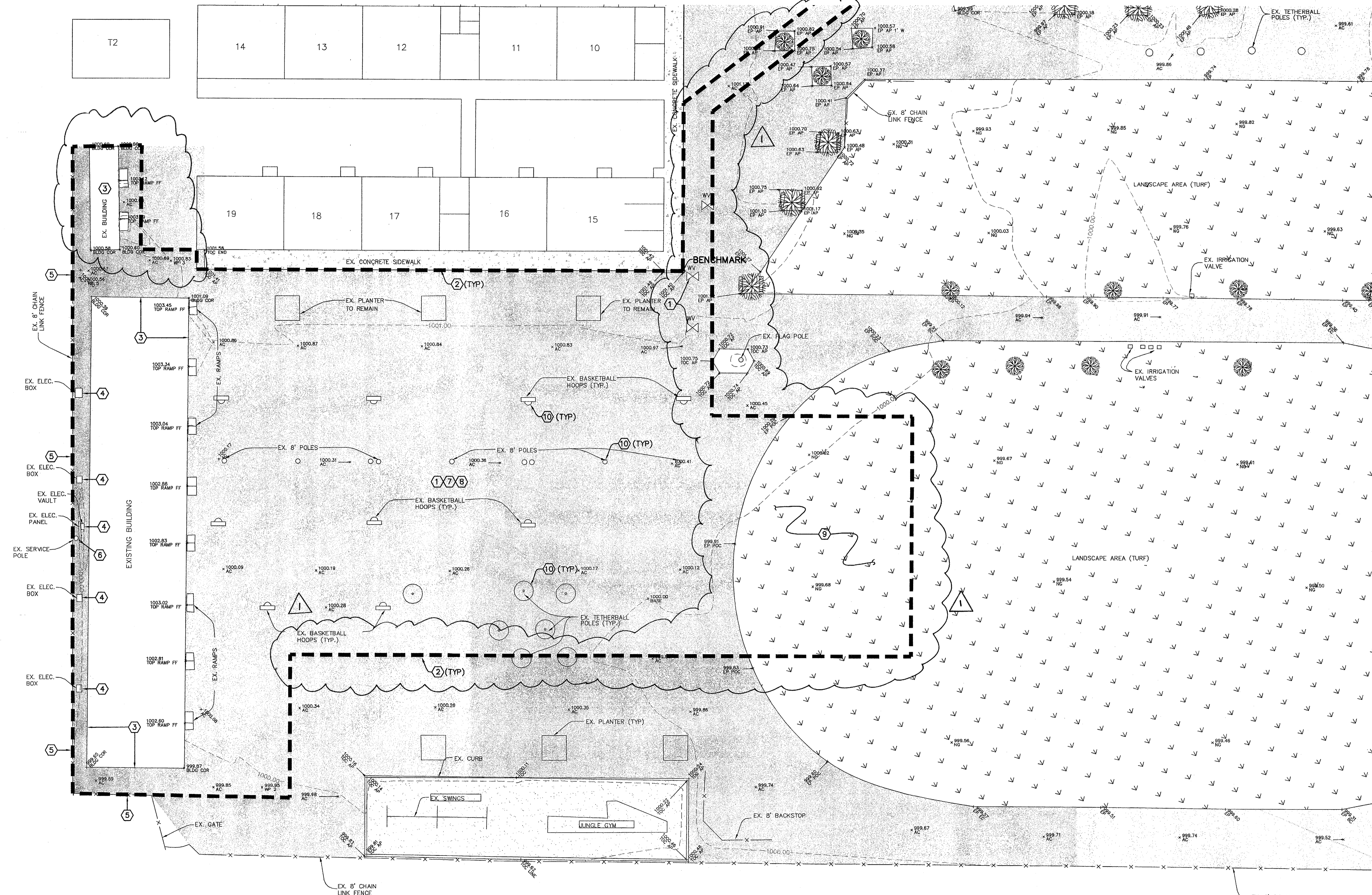


LEGEND (EXISTING CONDITIONS)

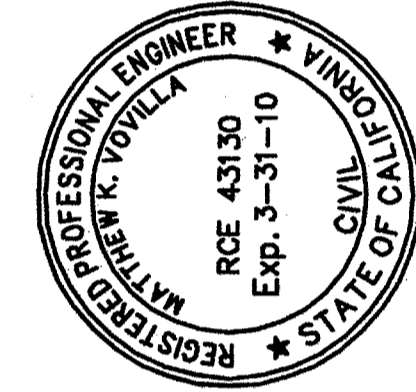
- AC ASPHALT CONCRETE
 - AP ANGLE POINT
 - BC BEGINNING CURVE
 - CO CLEANOUT
 - EP EDGE OF PAVEMENT
 - EX EXISTING
 - FL FLOWLINE
 - NG NATURAL GROUND
 - TOC TOP OF CONCRETE
 - WV WATER VALVE
 - EXISTING GROUND CONTOUR
 - EXISTING TREE
- EXISTING PLAYGROUND AREA
 - EXISTING CONCRETE
 - EXISTING LANDSCAPING (TURF)
 - EXISTING ASPHALT CONCRETE
 - LIMITS OF DEMOLITION

DEMOLITION NOTES:

- 1 CONTRACTOR SHALL RESEARCH ALL EXISTING UTILITIES, AND SHALL "POTHOLE" TO VERIFY THEIR LOCATIONS. ALL EXISTING UNDERGROUND UTILITIES, EXCEPT AS OTHERWISE NOTED, SHALL BE PROTECTED IN-PLACE.
- 2 ALL PAVEMENT OR CONCRETE TO BE DEMOLISHED SHALL BE SAW-CUT ALONG THE REMOVAL LINE.
- 3 COORDINATE WITH THE DISTRICT FOR REMOVAL OF EXISTING CLASSROOMS. EXISTING CLASSROOMS SHALL REMAIN IN-TACT, FULLY FUNCTIONAL AND ACCESSIBLE, UNTIL NEW MODULARS ARE INSTALLED AND ACCEPTED FOR USE BY THE DISTRICT.
- 4 REMOVE ELECTRICAL BOXES AND BACKBOARD PANEL.
- 5 CHAIN LINK FENCE TO REMAIN
- 6 COORDINATE WITH DISTRICT FOR RELOCATING EXISTING SERVICE POLE.
- 7 REFER TO SHEET 2 OF THESE PLANS AND THE ARCHITECTURAL DRAWINGS FOR ADDITIONAL NOTES REGARDING DEMOLITION.
- 8 THE LOCATION OF EXISTING UNDERGROUND UTILITIES AND PIPELINES HAVE NOT BEEN SHOWN ON THESE PLANS. THE EXACT DEPTH AND LOCATION OF UNDERGROUND UTILITIES SHALL BE DETERMINED PRIOR TO ANY GROUND DISTURBANCE.
- 9 TURF AND IRRIGATION SHALL BE REMOVED AS NECESSARY FOR CONSTRUCTION OF STORM WATER DISPOSAL AREA - SEE SHEET 7, CUT AND CAP IRRIGATION AS DIRECTED BY THE ENGINEER.
- 10 CONTRACTOR SHALL SALVAGE EXISTING BASKETBALL GOALS, VOLLEYBALL POLES, AND TETHERBALL POLES, AND SHALL DELIVER TO THE DISTRICT.



BELLE TERRACE



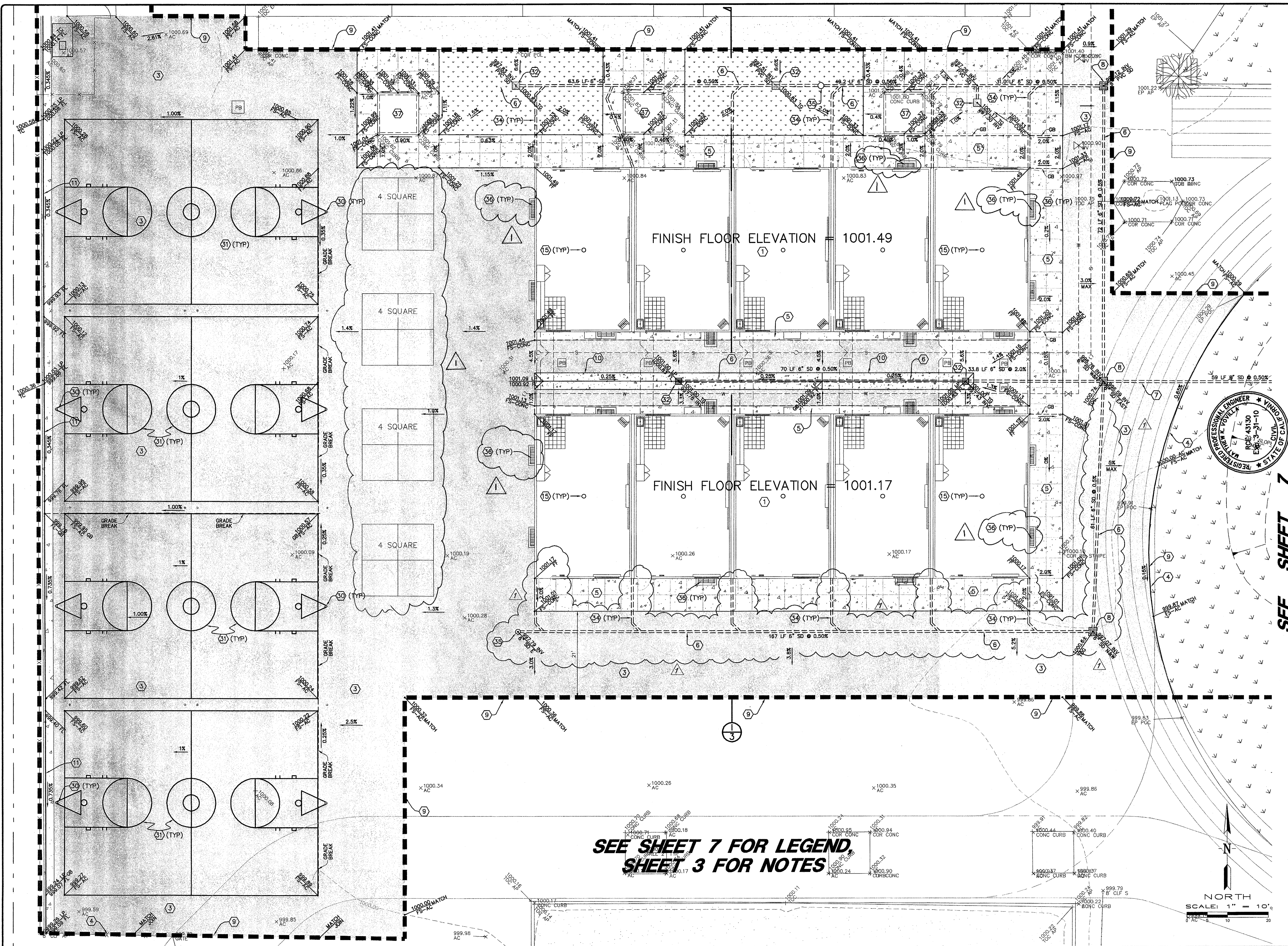
Pinnacle Civil Engineering, Inc.
 2161 Saturn Court, Bakersfield, CA 93308
 Phone: (661) 869-0184 Fax: (661) 377-0076

REVISIONS	DATE
1 APPENDIX #1	10/15/2009
MATTHEW K. VOVILLA RCE 43130 EXP. 3/31/10 REGISTERED PROFESSIONAL ENGINEER - CIVIL STATE OF CALIFORNIA	

DEMOLITION PLAN
MUNSEY ELEMENTARY
3801 BRAVE AVENUE
BAKERSFIELD, CALIFORNIA

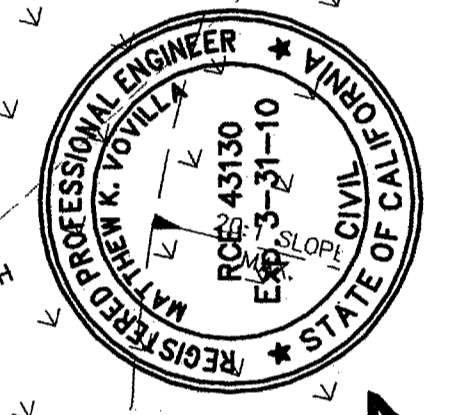
JOB No.:	09-388
DWG NO.:	09-388-BM
DATE:	09/23/2009
DRAWN BY:	ADK
CHECKED BY:	MKV
SHEET	5
OF 8 SHEETS	

APPENDIX #1



**SEE SHEET 7 FOR LEGEND,
SHEET 3 FOR NOTES**

SEE SHEET 7



Pinnacle Civil Engineering, Inc.
 2161 Saturn Court, Bakersfield, CA 93308
 Phone: (661) 869-0184 Fax: (661) 377-0076

DATE	10/15/2009
REVISIONS	
APPROVED BY	
DRAWN BY	
CHECKED BY	
PROJECT NO.	RCE 43130
JOB NO.	09-388
DWG NO.	09-388-BM
DATE	09/23/2009
DRAWN BY	ADK
CHECKED BY	MKV
SHEET	6
OF 8 SHEETS	

**SITE IMPROVEMENT & GRADING PLAN
 MUNSEY ELEMENTARY
 3801 BRAVE AVENUE
 BAKERSFIELD, CALIFORNIA**

JOB No.: 09-388
 DWG No.: 09-388-BM
 DATE: 09/23/2009
 DRAWN BY: ADK
 CHECKED BY: MKV
 SHEET 6
 OF 8 SHEETS

APPENDIX #1

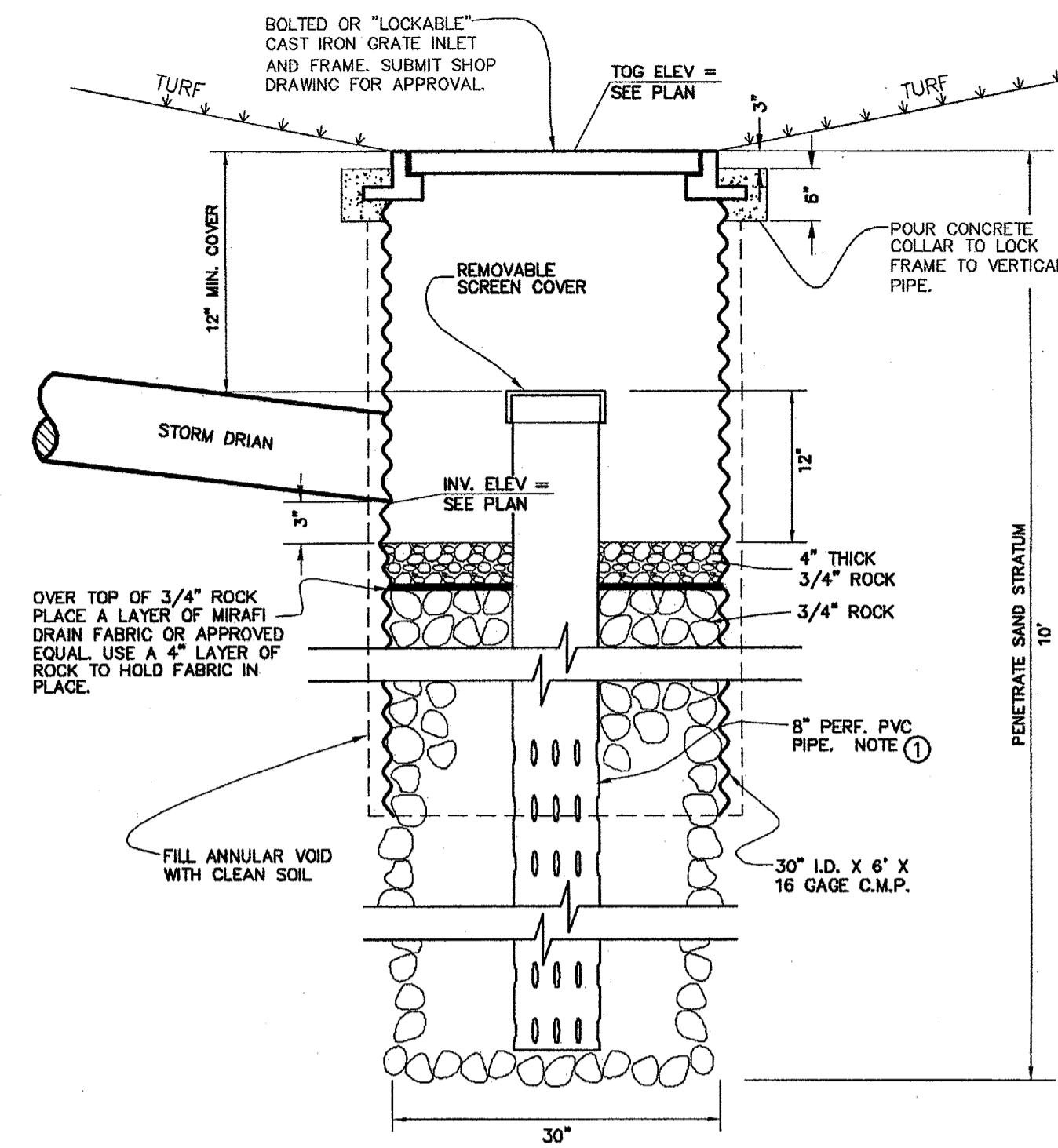
CONSTRUCTION LEGEND

- = NEW AC PAVEMENT
- = NEW CONCRETE
- SEE SHEET 5 FOR EXISTING CONDITIONS AND LEGEND
- = PROPOSED DRAINAGE INLET
- = DESIGN SLOPE
- = SAWCUT LINE
- = PROPOSED STORM DRAIN
- = CONSTRUCTION NOTE - SEE SHEET 3
- = EXISTING GROUND CONTOUR
- = EXISTING ELEVATION
- = PATH OF DRAINAGE
- = ELECTRIC PULL BOX, NOT A PART OF THESE PLANS, SEE ARCHITECT'S PLAN.

- TG = TOP OF GRATE INLET
- FL = FLOWLINE
- GB = GRADE BREAK
- TC = TOP OF CURB
- TOC = TOP OF CONCRETE FLAT WORK
- MIN = MINIMUM
- AC = ASPHALT CONCRETE
- BW = BACK OF WALK
- EX = EXISTING
- HP = HIGH POINT
- INV = INVERT
- FS = FINISHED SURFACE
- LP = LIP OF V-GUTTER
- CONC = PORTLAND CEMENT CONCRETE
- S = SLOPE
- FG = FINISH GRADE
- EP = EDGE OF PAVEMENT
- PB = PULL BOX

NOTES - STORM WATER DETENTION AREA

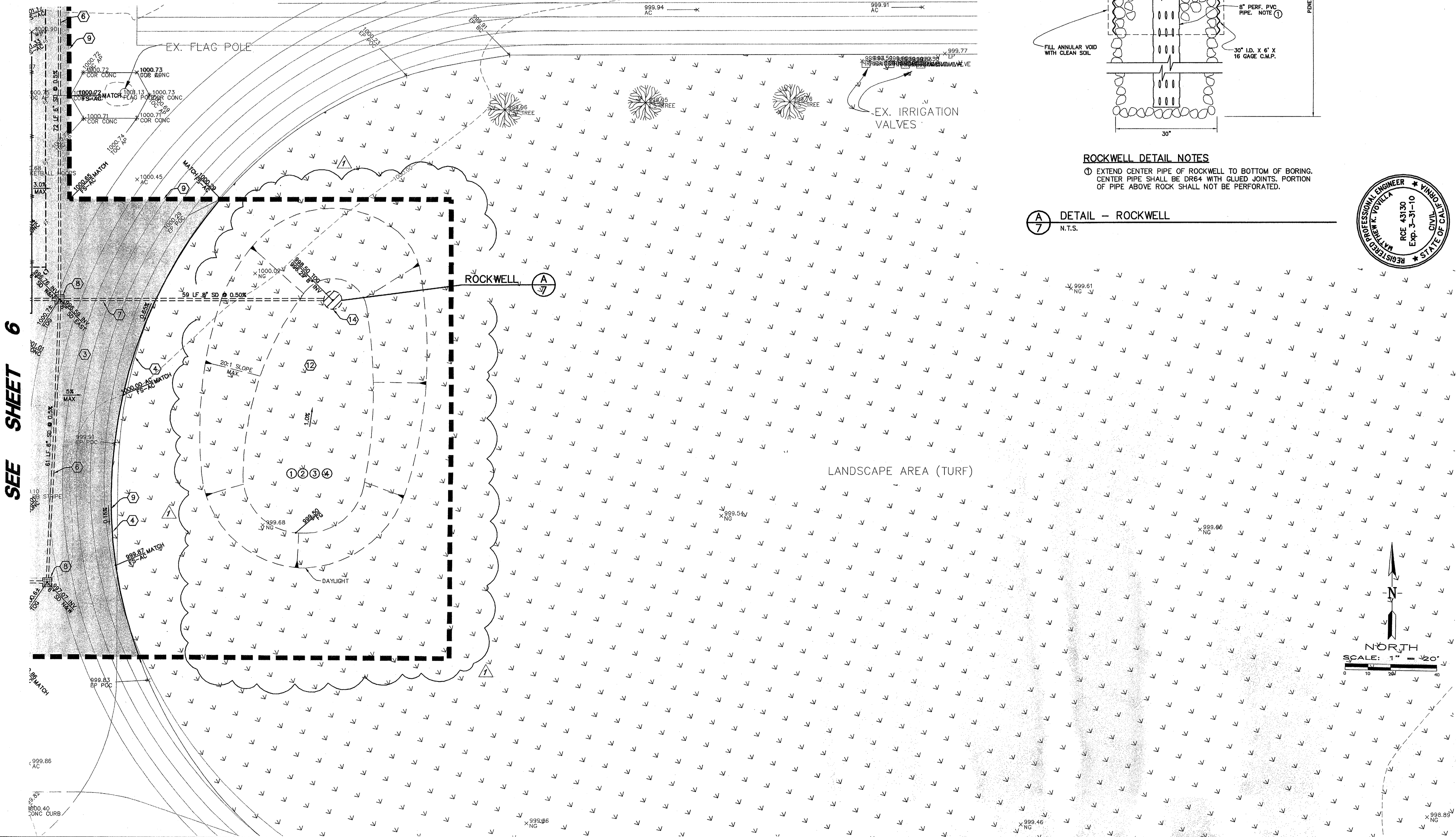
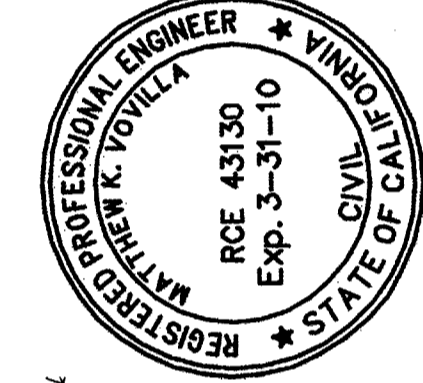
- 1 CONTRACTOR SHALL REMOVE SOD AND STORE ON SITE.
- 2 CUT AND CAP ANY EXISTING IRRIGATION WITHIN LIMITS OF EXCAVATION AND REMOVAL.
- 3 THE DISTRICT WILL BE RESPONSIBLE FOR REINSTALLATION OF IRRIGATION.
- 4 CONTRACTOR SHALL RE-PLACE SOD AFTER THE DISTRICT COMPLETES IRRIGATION MODIFICATION.



ROCKWELL DETAIL NOTES

- 1 EXTEND CENTER PIPE OF ROCKWELL TO BOTTOM OF BORING. CENTER PIPE SHALL BE DR64 WITH GLUED JOINTS. PORTION OF PIPE ABOVE ROCK SHALL NOT BE PERFORMED.

DETAIL - ROCKWELL
N.T.S.



Pinnacle Civil Engineering, Inc.
2161 Saturn Court, Bakersfield, CA 93308
Phone: (661) 869-0184 Fax: (661) 377-0076

JOB NO.:	09-388
DWG NO.:	09-388-BM
DATE:	09/23/2009
DRAWN BY:	ADK
CHECKED BY:	MKY
SHEET:	7
OF 8 SHEETS	

STORM WATER DETENTION AREA
MUNSEY ELEMENTARY
3801 BRAVE AVENUE
BAKERSFIELD, CALIFORNIA

JOB NO.:	09-388
DWG NO.:	09-388-BM
DATE:	09/23/2009
DRAWN BY:	ADK
CHECKED BY:	MKY
SHEET:	7
OF 8 SHEETS	