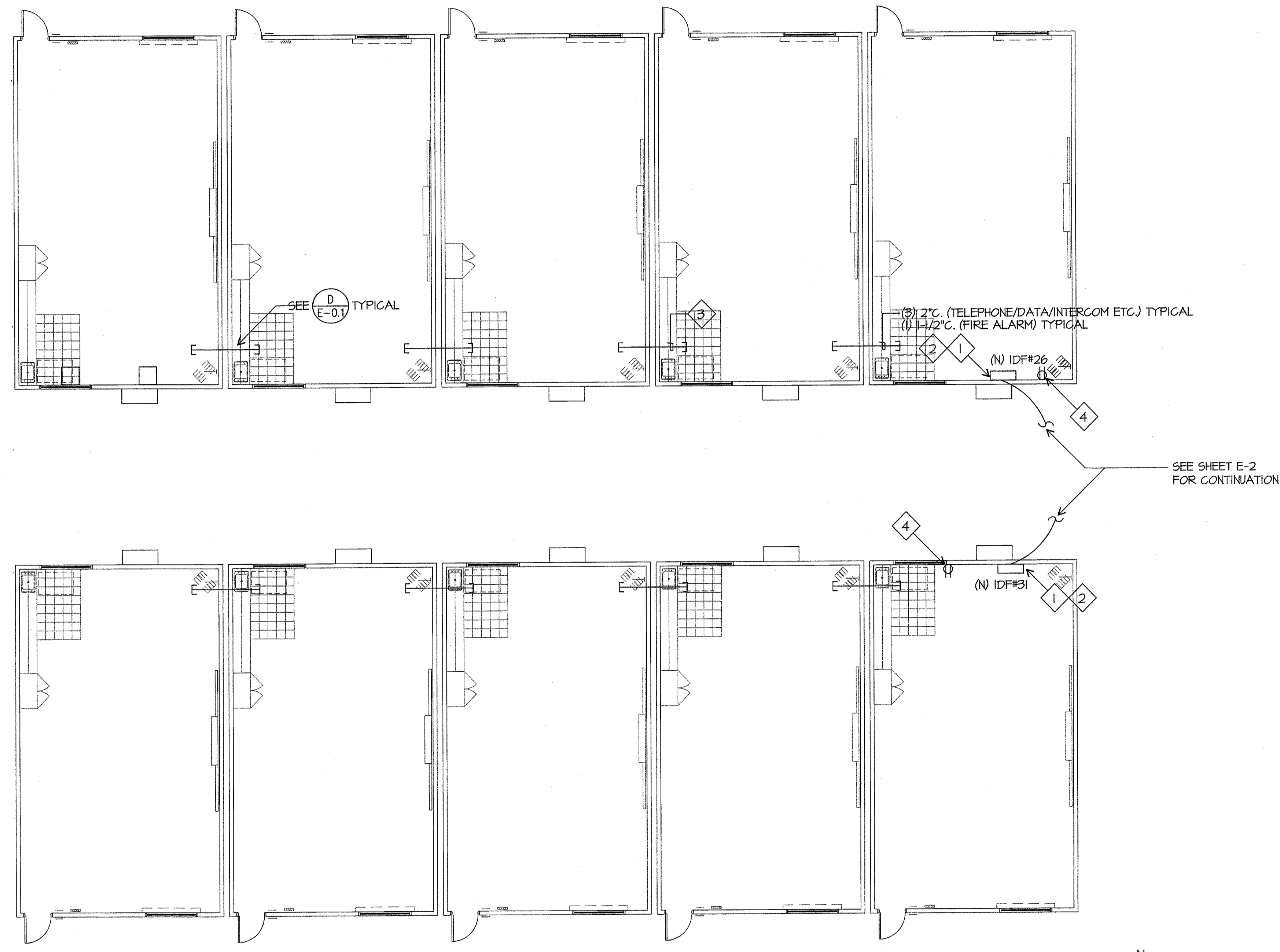
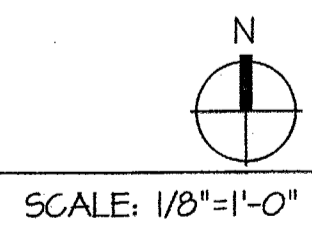


COMMUNICATION PLAN NOTES

- 1 CONNECT TO SPARE 20/1 CIRCUIT BREAKER IN PANEL PROVIDED WITH CLASSROOM.
- 2 PROVIDE (1) RE4 EQUIPMENT CABINETS WITH (1) 48 PORT PATCH PANEL, AMO BCSD CONNECTORS, BY HUBBELL COMPANY. COORDINATE WITH GARY TAYLOR, NETWORK SYSTEMS ENGINEER FOR BAKERSFIELD CITY SCHOOL DISTRICT, 661-631-4745.
- 3 SUPPORT CABLE EVERY 5' VIA J-HOOKS, INSTALLED AT LEAST 8" ABOVE CEILING ON PERIMETER WALLS, TYPICAL.
- 4 ADD RECEPTACLE NEXT TO (N) IDF. PROVIDE 20/1 CIRCUIT BREAKER FROM PANEL PROVIDED WITH PORTABLE. PROVIDE MATERIALS NEEDED FOR DEDICATED CIRCUIT TO BE USED FOR INTRUSION POWER SUPPLY. COORDINATE REQUIREMENTS WITH BAKERSFIELD CITY SCHOOL VENDOR MORGAN CLAYTON, 661-397-5511.



COMMUNICATION PLAN



Ownership of Documents
This document, the ideas and designs incorporated herein, as an instrument of Professional Service is the property of Integrated Designs by SOMAM Inc. and is not to be used, in whole or in part for any other project without written authorization.
© COPYRIGHT 2009

integrated designs by SOMAM, Inc.
ARCHITECTURE • ENGINEERING • INTERIOR DESIGN • CONSTRUCTION MANAGEMENT
8011 N. Fresno, Suite 130 - Fresno, California 93710
Phone (559) 436-0881 Fax (559) 436-0887 E-Mail: design@somam.com
www.integrateddesigns.com

Rev. No.	Rev. Date	Rev. Description

COMMUNICATION PLAN

MUNSEY ELEMENTARY SCHOOL
10 NEW PORTABLE CLASSROOMS
BAKERSFIELD CITY SCHOOL DISTRICT
3801 BRAVE AVE. BAKERSFIELD, CA 93309

Issue Date:	Date: 05/02/06	Designer: DESIGNER	DR: DRAFTER	PC: CJM
-------------	----------------	--------------------	-------------	---------

DSA Identification Stamp:

IDENTIFICATION STAMP
DIV. OF THE STATE ARCHITECT

05-112985

AC: [Signature]
DATE: SEP 24 2004

Stamp(s):

JMPE
REGISTERED ELECTRICAL ENGINEERING
LIGHTING DESIGN
CA REGISTRATION NO E15000

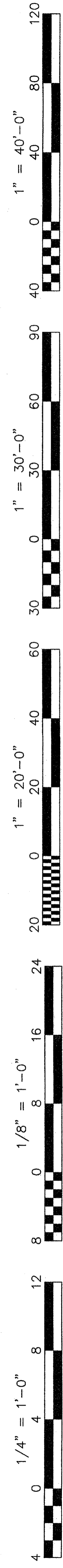
04082

6500 MORGAN AVENUE,
SUITE 201
BAKERSFIELD, CA 93309
(805) 831-7991
722 (805) 831-7913
email: jmaloney@jmpe.net
www.jmpe.net

Job No.: **3832**

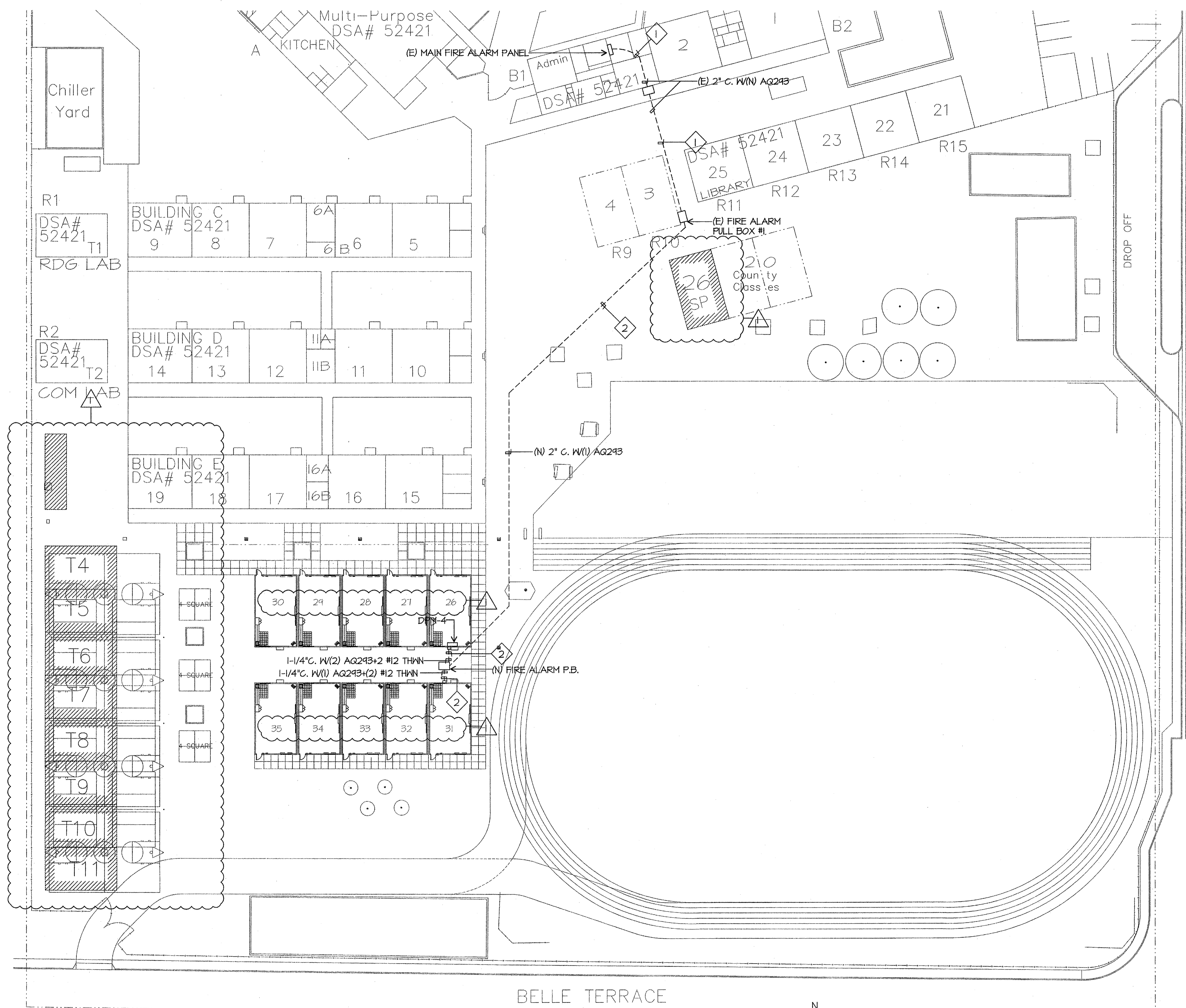
Sheet No.: **E-2.1**

Release: CURTIS MCNALLY



SITE FIRE ALARM PLAN NOTES

- 1 PULL NEW CABLES IN EXISTING CONDUIT. PULL PAST EXISTING CABLES.
- 2 SAWCUT AND REPAIR TO MATCH EXISTING. BORING IS AN ACCEPTABLE METHOD OF CONDUIT INSTALLATION. PROVIDE METHOD OF PROCEDURE FOR BORING TO ENGINEER FOR REVIEW AND APPROVAL. DETAIL BORING PROCEDURE. IDENTIFY TYPE OF CONDUIT TO BE USED IN BORE.



SITE FIRE ALARM PLAN

SCALE: 1"=30'-0"



integrated designs by SOMAM, Inc.
ARCHITECTURE • ENGINEERING • INTERIOR DESIGN • CONSTRUCTION MANAGEMENT
8011 N. Fresno, Suite 130 - Fresno, California 93710
Phone (559) 336-0881 Fax (559) 336-0887 E-Mail: design@somam.com
www.integrateddesigns.com

Ownership of Documents
This document, the ideas and designs incorporated herein, as an instrument of Professional Service is the property of Integrated Designs by SOMAM Inc. and is not to be used, in whole or in part for any other project without written authorization.
© COPYRIGHT 2009

Issue Date: 05/02/06
Date: 05/02/06
Designer: DESIGNER
DR: DRAFTER
PC: CJM

Revision Description:
ADDENDUM 1

Revision:
10/16/09

Sheet Title:
SITE FIRE ALARM PLAN

Project Name & Address:
**MUNSEY ELEMENTARY SCHOOL
10 NEW PORTABLE CLASSROOMS**
BAKERSFIELD CITY SCHOOL DISTRICT
3801 BRAVE AVE. BAKERSFIELD, CA 93309

DSA Identification Stamp:

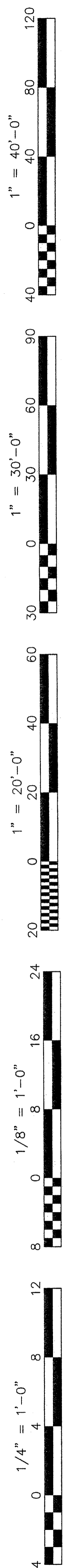
Stamp(s):

Job No.: **3832**

Sheet No.: **E-3**

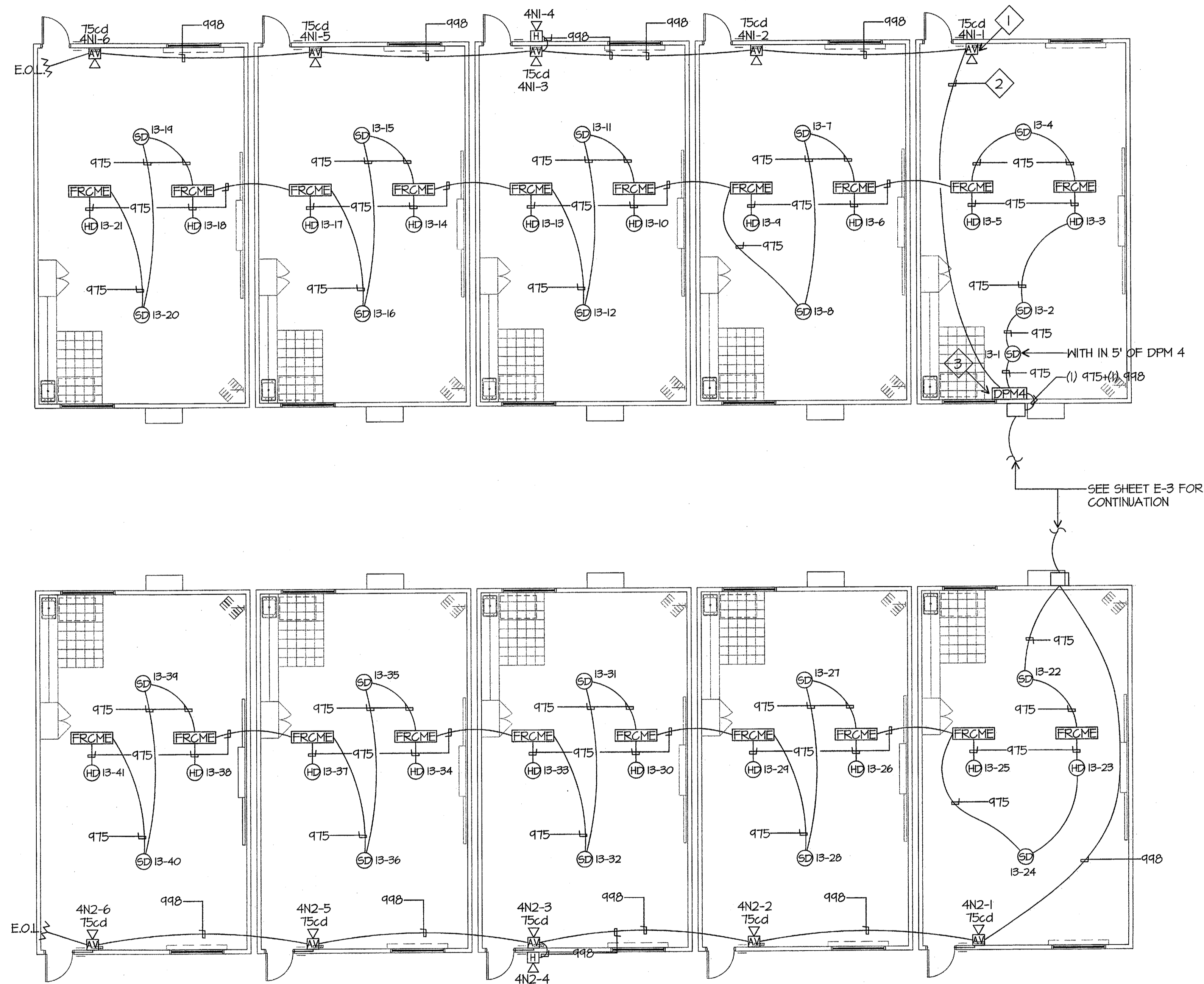
Release: **ADDENDUM 1**

Released by: **CURTIS MCNALLY**

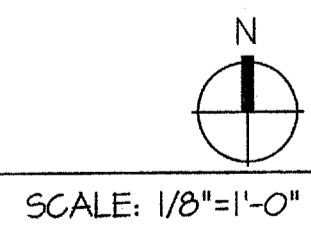


FIRE ALARM PLAN NOTES

- 1 FIRE ALARM CABLE SHALL BE INSTALLED IN 3/4" CONDUIT IN WALLS, TYPICAL.
- 2 SUPPORT FIRE ALARM CABLE EVERY 5' VIA J-HOOKS INSTALLED AT LEAST 8" ABOVE CEILING ON PERIMETER WALLS, TYPICAL.
- 3 PROVIDE 20/1 CIRCUIT BREAKER PER NFPA 72 FOR DPM.



FIRE ALARM PLAN

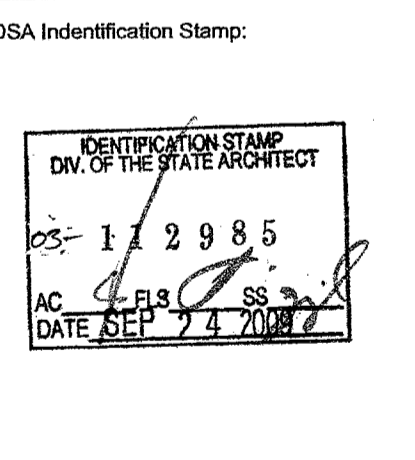


Ownership of Documents
This document, the ideas and designs incorporated herein, as an instrument of Professional Service is the property of Integrated Designs by SOMAM, Inc. and is not to be used, in whole or in part for any other project without written authorization.
© COPYRIGHT 2009

Integrated designs	by SOMAM, Inc.
ARCHITECTURE • ENGINEERING • INTERIOR DESIGN • CONSTRUCTION MANAGEMENT	
6011 N. Fresno, Suite 130 - Fresno, California 93710	
Phone (559) 438-0887 Fax (559) 438-0887 E-Mail: design@somam.com	
www.integratedesigns.com	
Revision Description:	Rev. Date:
Revision:	Rev. Date:
Revision:	Rev. Date:
Revision:	Rev. Date:

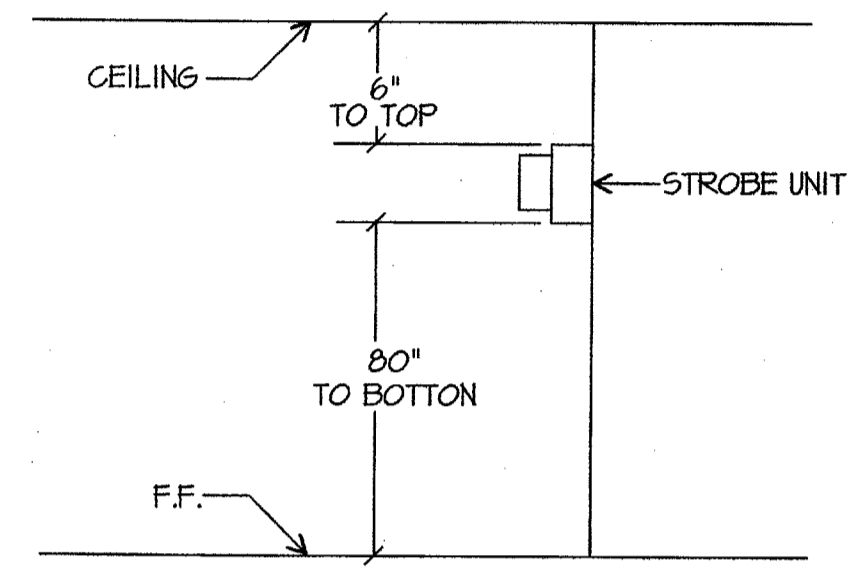
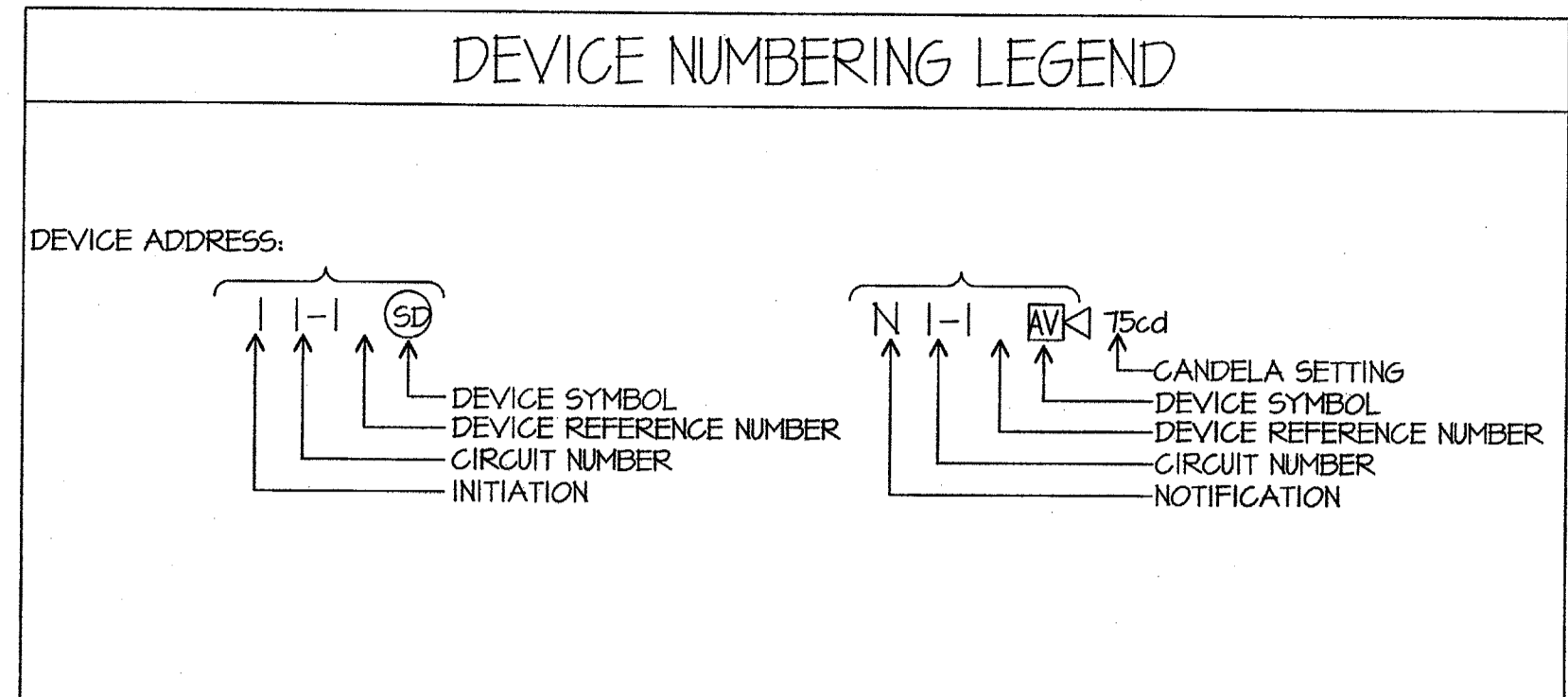
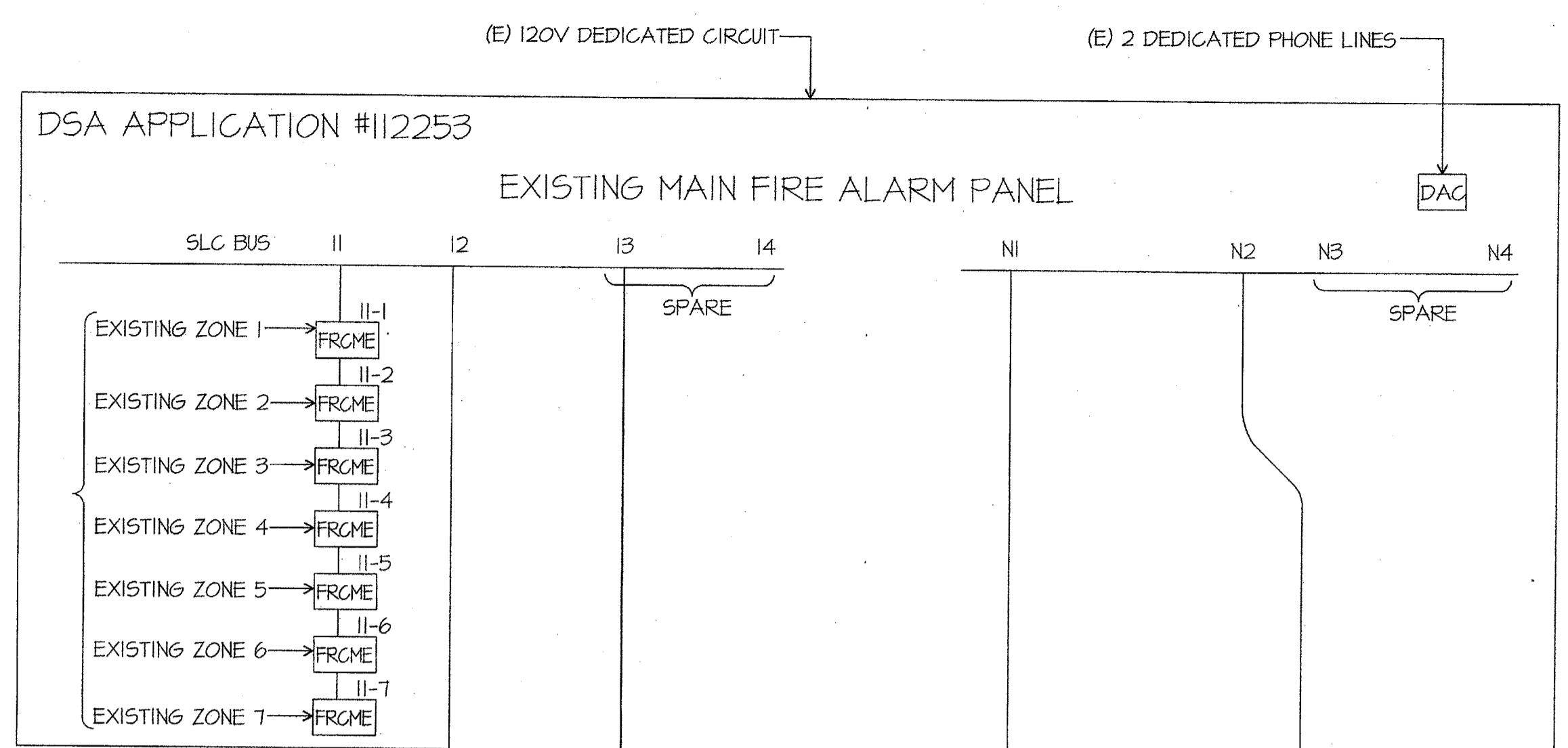
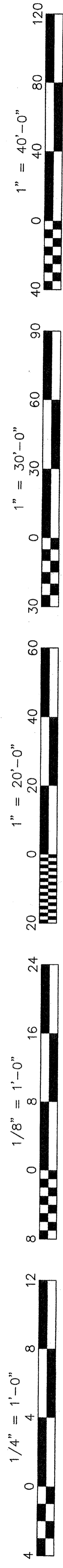
FIRE ALARM PLAN
Project Name & Address:
MUNSEY ELEMENTARY SCHOOL
10 NEW PORTABLE CLASSROOMS
BAKERSFIELD CITY SCHOOL DISTRICT
3801 BRAVE AVE. BAKERSFIELD, CA 93309

Issue Date:	Date:	05/02/06
Designer:	DESIGNER	
DR:	DRAFTER	
FC:	CJM	



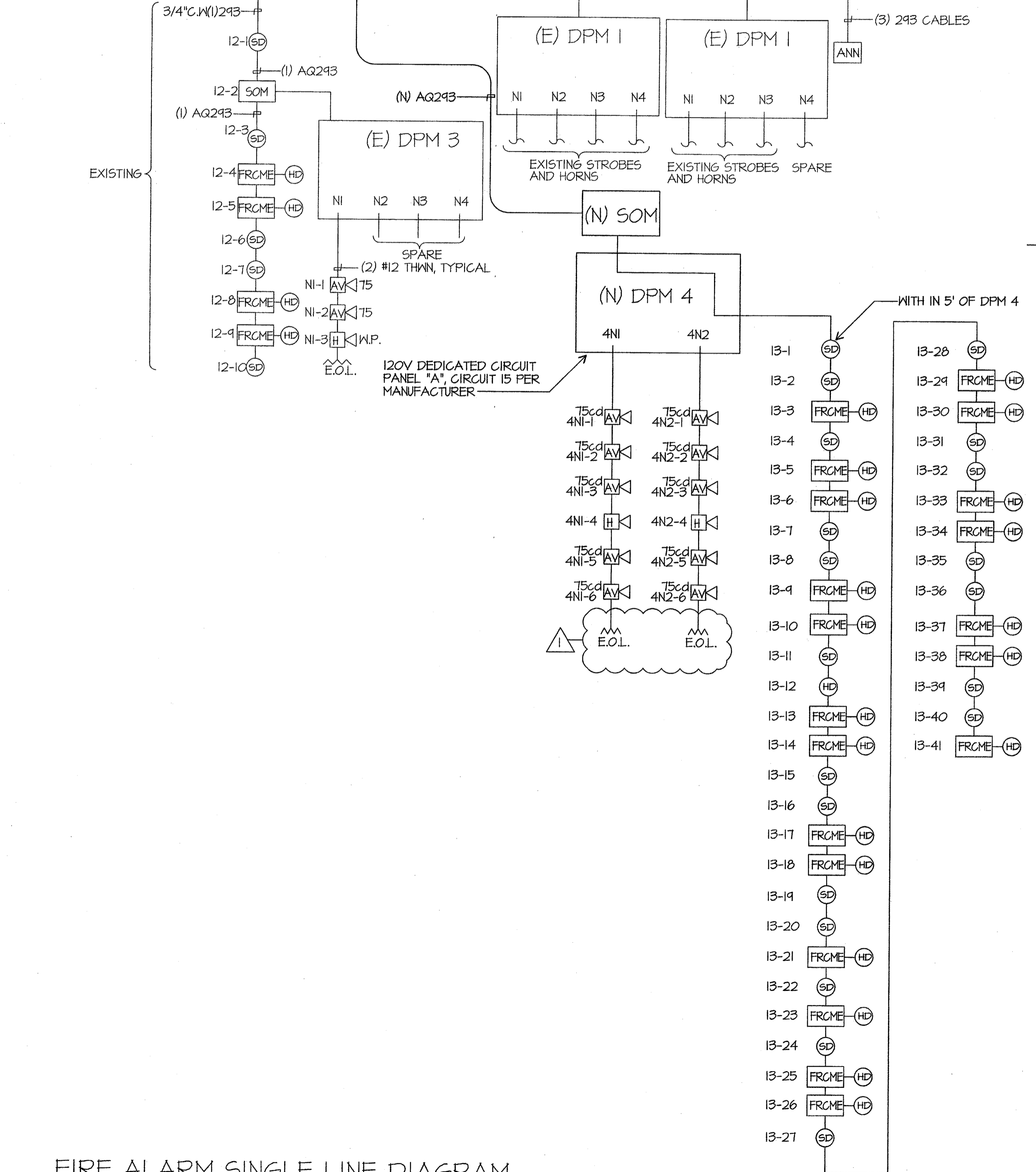
Stamp(s):	
Job No.:	3832
Sheet No.:	E-3.1





HORN/STROBE MOUNTING DETAIL
SCALE: NONE

CONTRACTOR SHALL DISCONNECT AND RECONNECT ALL ZONES ASSOCIATED WITH EXISTING BUILDINGS ON CAMPUS AND PROVIDE TESTING FOR POSITIVE REPORTING. PROVIDE FIRE WATCH DURING IMPAIRMENT OF SYSTEM, PER NFPA & CFC (CHAPTER 14 + 9)



FIRE ALARM SINGLE LINE DIAGRAM
SCALE: NONE

FIRE ALARM BATTERY CALCULATION-EXISTING MASTER PANEL FIRENET 2127

EQUIPMENT DESCRIPTION	QUANTITY	SUPERVISORY CURRENT (AMPERES)		ALARM CURRENT (AMPERES)			
		EXISTING	NEW	EACH	SUB-TOTAL	EACH	SUB-TOTAL
MASTER PANEL	1			0.1	0.1	0.1	0.1
REMOTE ANNUNCIATOR PANEL	1			0.15	0.15	0.27	0.27
SUPERVISED OUTPUT MODULE	3		1	0.0003	0.0012	0.0003	0.0012
FAST RESPONSE CONTACT MODULE	11		20	0.00055	0.01705	0.008	0.248
DIGITAL ALARM COMMUNICATOR	1			0.02	0.02	0.02	0.02
SMOKE DETECTOR	3		21	0.00039	0.00936	0.00039	0.00936
HEAT DETECTOR	4		20	0.00035	0.0084	0.00035	0.0084
SUB TOTAL AMPERES				0.30601	AMPERS	0.65696	AMPERS
SUB TOTAL AMPERE-HOURS				x 24 HOURS		x 0.084 HOURS	
				7.34424	A.H.	0.055185	A.H.
TOTAL REQUIRED AMPERE-HOURS FOR DISTRIBUTED POWER MODULE						7.399425	A.H.
BATTERY NON-LINEAR DISCHARGE CHARACTERISTIC FACTOR						x 1.2	
TOTAL MINIMUM AMPERE HOURS REQUIRED						8.87931	A.H.
EXISTING BATTERY CAPACITY						24.00	A.H.

FIRE ALARM BATTERY CALCULATION-NEW DISTRIBUTED POWER MODULE 4

EQUIPMENT DESCRIPTION	QUANTITY	SUPERVISORY CURRENT (AMPERES)		ALARM CURRENT (AMPERES)			
		EXISTING	NEW	EACH	SUB-TOTAL	EACH	SUB-TOTAL
DISTRIBUTED POWER MODULE			1	0.075	0.075	0.175	0.175
AUDIBLE/VISUALS	75		10		0	0.121	1.21
HORN EXTERIOR			2		0	0.062	0.124
SUB TOTAL AMPERES			0	0.075	AMPERS	1.509	AMPERS
SUB TOTAL AMPERE-HOURS				x 24 HOURS		x 0.084 HOURS	
				1.8	A.H.	0.126756	A.H.
TOTAL REQUIRED AMPERE-HOURS FOR DISTRIBUTED POWER MODULE						1.926756	A.H.
BATTERY NON-LINEAR DISCHARGE CHARACTERISTIC FACTOR						x 1.2	
TOTAL MINIMUM AMPERE HOURS REQUIRED						2.312107	A.H.
PROVIDED BATTERY CAPACITY						7.00	A.H.

FIRE ALARM SYMBOL LIST MATRIX

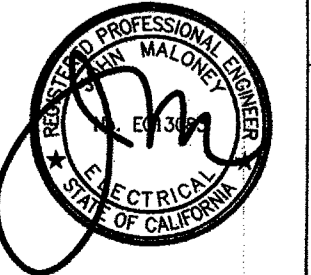
SYMBOL	DEVICE	MFR & CAT#	REMARKS	CSFM LISTING
DPM	NAC POWER EXTENDER	HOCHIKI FN-642-ULADA		7315-0410:166
SD	SMOKE DETECTOR	HOCHIKI ALG-V	WITH HSB-NSA-6 BASE	7272-0410:149
HD	HEAT DETECTOR	HOCHIKI DFE-190	WITH NS6-100 BASE	7270-0410:119
FRCME	FAST RESPONSE CONTACT MODULE	HOCHIKI DCP-FRCME		7300-0410:150
SOM	SUPERVISED OUTPUT MODULE	HOCHIKI SOM		7300-0410:150
AV	HORN STROBE	WHEELOCK AS24MCW 90dBA		7125-0785:131
H W.P.	HORN	WHEELOCK ASWP 99dBA	EXTERIOR W.P. HORN	7125-0785:131

FIRE ALARM SEQUENCE OF OPERATION

	INITIATION	AREA SMOKE DETECTOR	AREA THERMAL DETECTOR	AC POWER FAILURE
RESPONSE				
ANNUNCIATE AT FIRE CONTROL ROOM				YES (TROUBLE)
ALARM AND TROUBLE		YES	YES	
ANNUNCIATE AT 24 HOUR ATTEND LOCATION				YES (TROUBLE)
ALARM AND TROUBLE		YES	YES	
ALARM		YES	YES	YES
CENTRAL STATION MONITORING		YES	YES	YES

VOLTAGE DROP CALCULATIONS

CIRCUIT	2x	LENGTH x	AMPS x	RESISTANCE x	= VOLTS	VOLTAGE DROP
4N1	2	150	0.667	0.00205	0.410	1.71 %
4N2	2	170	0.667	0.00205	0.465	1.94 %



Ownership of Documents
This document, the ideas and designs incorporated herein, as an instrument of Professional Service is the property of Integrated Design by SOMM, Inc. and is not to be used, in whole or in part for any other project without written authorization.
© COPYRIGHT 2009

Integrated designs by SOMM, Inc.
ARCHITECTURE • INTERIOR DESIGN • CONSTRUCTION MANAGEMENT
6011 N. Fresno, Suite 130 - Fresno, California 93710
Phone (559) 436-0861 Fax (559) 436-0867 E-Mail: design@somm.com
www.integrateddesigns.com

Revision: 10/15/09
Revision Description: ADEENDUM 1

Sheet Title: FIRE ALARM SINGLE LINE DIAGRAM CALCULATIONS

Project Name & Address: MUNSEY ELEMENTARY SCHOOL 10 NEW PORTABLE CLASSROOMS BAKERSFIELD CITY SCHOOL DISTRICT BAKERSFIELD, CA 93309

Issue Date: 05/02/06
Designer: DR. DRAFTER
FC: CJM

Stamp(s):

Job No.: 3832

Sheet No.: E-3.2

Release: ADEENDUM #1

Rel. Date: 10/15/09



American Modular Systems Inc.

24' x 40' RELOCATABLE BUILDINGS
BAKERSFIELD CITY SCHOOL DISTRICT
(MUNSEY AND FREMONT ELEMENTARY SCHOOL)

EXPOSED STEEL-2:12 PITCHED ROOF

MODULAR STEEL MOMENT FRAME TEST & INSPECTION GUIDELINE

A SEPARATE TEST AND INSPECTION LIST IS TO BE SUBMITTED AS PART OF THE APPROVAL PROCESS. THIS GUIDE DOES NOT REPLACE THE TEST AND INSPECTION LIST

TYPE OF MODULAR STEEL MOMENT FRAME BUILDING PROJECT (X - INDICATES TEST OR INSPECTION TO BE DONE)

Table with columns: TESTS and INSPECTIONS, STOCKPILE, CONSTRUCTION OF (diaphragm material-foundation material), RELOCATION OF CERTIFIED BUILDING. Rows include: MATERIAL TYPE, DESCRIPTION, COMPACTED FILL, CONCRETE, REINFORCING STEEL, STRUCTURAL STEEL, GROUNDING, SHOT PINS, EXPANSION ANCHORS, EPOXY ANCHORS, INSPECTOR CLASS, SELECTION OF THE PROJECT INSPECTOR AND TESTING AGENCY, COST OF THE PROJECT INSPECTOR AND TESTING AGENCY, COPIES OF THE REPORT TO.

BUILDING DATA

Table with columns: OCCUPANCY, TYPE OF CONSTRUCTION, WIND LOAD, FLOOR LIVE LOAD, ROOF LIVE LOAD, FIRE SPRINKLER SYSTEM WEIGHT (PSF), ALLOWABLE SOIL PRESSURE (PSF), FLOOD HAZARD AREA, BUILDING AREA, CLIMATE ZONES, MODULES, SYSTEM, FOUNDATION TYPE, SEISMIC.

APPLICABLE CODES

Table listing applicable codes and standards including: PARTIAL LIST OF APPLICABLE CODES AS OF JANUARY 1, 2008, 2007 BUILDING STANDARDS ADMINISTRATIVE CODE, 2007 CALIFORNIA BUILDING CODE (CBC), 2007 CALIFORNIA ELECTRICAL CODE (CEC), 2007 CALIFORNIA MECHANICAL CODE (CMC), 2007 CALIFORNIA PLUMBING CODE (CPC), 2007 CALIFORNIA ENERGY CODE, 2004 SAFETY CODE FOR ELEVATORS AND ESCALATORS, 2007 CALIFORNIA FIRE CODE, 2007 CALIFORNIA EXISTING BUILDING CODE, 2007 CALIFORNIA 'GREEN' BUILDING REQUIREMENTS, 2007 CALIFORNIA REFERENCED STANDARDS, TITLE 19 C.C.R., PUBLIC SAFETY, STATE FIRE MARSHAL REGULATIONS, PARTIAL LIST OF APPLICABLE STANDARDS.

GENERAL NOTES

- 1. PC BUILDING CLASSIFIED AS OCCUPANCY "A" WITH OCCUPANT LOAD 100 OR MORE CAN NOT BE REVIEWED OVER THE COUNTER (OTC).
2. PC BUILDING APPROVED ONLY FOR OCCUPANCY E OR B, OR A CATEGORY I & II WITH OCCUPANT LOAD LESS THAN 300.
3. PC BUILDING EXITING IS BASED ON THE USE OR OCCUPANCY AND WILL BE REVIEWED AS SITE SPECIFIC.
4. PC BUILDING LOCATED IN FIRE HAZARD SEVERITY ZONES PER WILDLAND URBAN INTERFACE FIRE AREAS (WUI) SHALL CONFORM TO CBC CHAPTER 7A.
5. SITE USE SPECIFIC REQUIREMENT FOR AUTOMATIC SPRINKLER SYSTEM MIGHT BE REQUIRED BUT NOT INCLUDED IN THIS PC APPROVAL.

DRAWING INDEX

Table listing drawing sheets: TS COVER SHEET, A1 TYPICAL FLOOR PLAN, A3 TYPICAL INTERIOR ELEVATIONS, A3A TYPICAL INTERIOR ELEVATIONS, A5 TYPICAL EXTERIOR ELEVATIONS (SYNTHETIC STUCCO), A5A ARCHITECTURAL DETAILS (SYNTHETIC STUCCO OPTION), AD ACCESSIBLE DETAILS, N1 GENERAL NOTES, N2 GENERAL NOTES, P1 ISOMETRIC PLANS & DETAILS, M1 TYPICAL REFLECTED CEILING PLAN, M2 MECHANICAL BUILDING SECTION & CEILING DETAILS, M3 CEILING & MECHANICAL NOTES, E1 TYPICAL ELECTRICAL PLAN, E2 ELECTRICAL NOTES & DETAILS, S1 CONCRETE FOUNDATION PLAN 50 P.S.F & 50 P.S.F LIVE LOAD+15 P.S.F PART. LOAD FLOOR (PLYWOOD OR VIROC FLOOR SYSTEM), S1C CONCRETE FOOTING DETAILS, S1D CONCRETE FOOTING DETAILS, S2 FLOOR FRAMING PLAN & DETAILS (PLYWOOD), S3 ROOF FRAMING PLAN & DETAILS (OPEN SOFFIT), S3.1 ROOF FRAMING PLAN & DETAILS (OPEN SOFFIT), S3A ROOF FRAMING PLAN & DETAILS (ENCLOSED SOFFIT), S4 TYPICAL FRAME ELEVATIONS, S5 WALL FRAMING, S5A WALL FRAMING DETAILS, S7 TYPICAL LONGITUDINAL & TRANSVERSE FRAME ELEVATION.

ITEMS IN RED FONT COLOR ARE USER NOTES AND INDICATE ITEMS THAT NEED TO BE VERIFIED FOR EACH SPECIFIC PC. THE NOTES IN RED ABOVE AND BELOW ARE TO BE REMOVED PRIOR TO PLACING THE GUIDELINE ON THE DRAWINGS. Note 1: Verify that Either Condition a or b are met. a) Concrete Plant complies fully with ASTM C94, Section 8 and 9, and has a current certification indicating the plant has automatic batching and recording capabilities from the National Ready Mixed Concrete Association. b) Compressive strength: 3500 psi Specified - 2500 psi Design. Requirements c thru f are met. c) Inspector to check first batching at start of work and furnish mix proportions to licensed weighmaster. d) Licensed Weighmaster to positively identify materials as to quantity and certify each load by a ticket. e) Tickets transmitted to Inspector of Record. f) Submit Weighmaster Affidavit. Note 2: Air Content Test as required based on site location (for cold weather conditions). Note 3: Required where the details of the PC specify a Welding. Note 4: Required where the details of the PC specify the use of this type of anchor.

BASED ON PC 02-109695

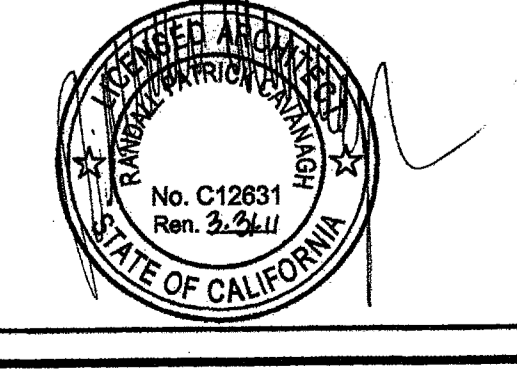
Table with columns: NO, DATE, DESCRIPTION. Revisions section.

DATE: 08/13/09
SCALE: NOTED
DRAWN BY: RS
SERIAL NO.:

CUSTOMER: BAKERSFIELD CITY SCHOOL DISTRICT
MUNSEY AND FREMONT ELEMENTARY SCHOOL
2:12 PITCHED ROOF 24' x 40' RELOCATABLE BUILDINGS
COVER SHEET



APPROVALS:



IDENTIFICATION STAMP
DIV. OF THE STATE ARCHITECT
OFFICE OF REGULATION SERVICES
No. C12831
Ren. 3.3.11
DATE SEP 24 2009

PROJECT No.
T-S

THESE DRAWINGS AND SPECIFICATIONS ARE THE PROPERTY OF AMERICAN MODULAR SYSTEMS AND ARE NOT TO BE REPRODUCED, CHANGED OR COPIED IN ANY FORM OR MANNER, NOR ARE THEY TO BE ASSIGNED TO ANY THIRD PARTY WITHOUT THE WRITTEN AUTHORIZATION OF AMERICAN MODULAR SYSTEMS.