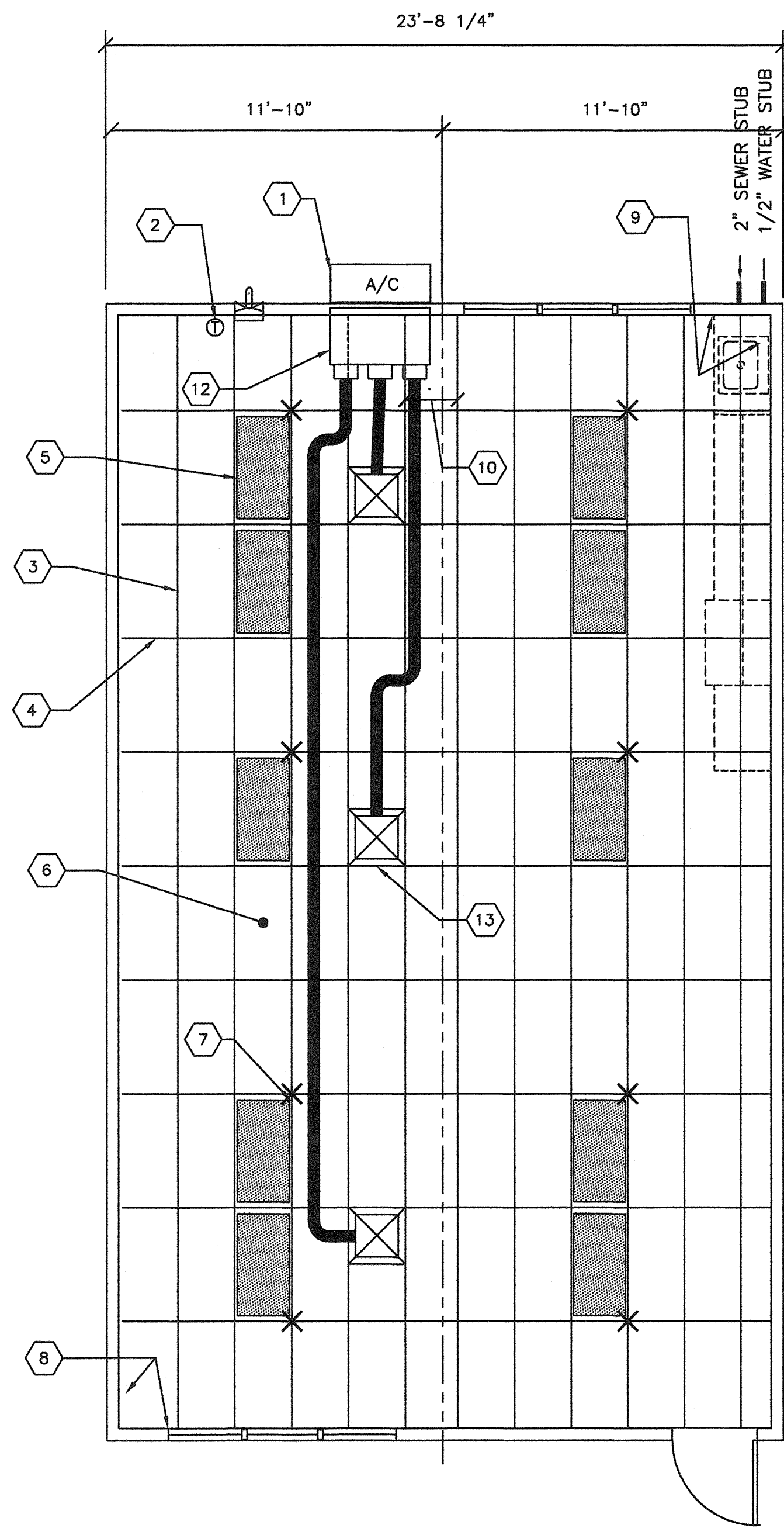


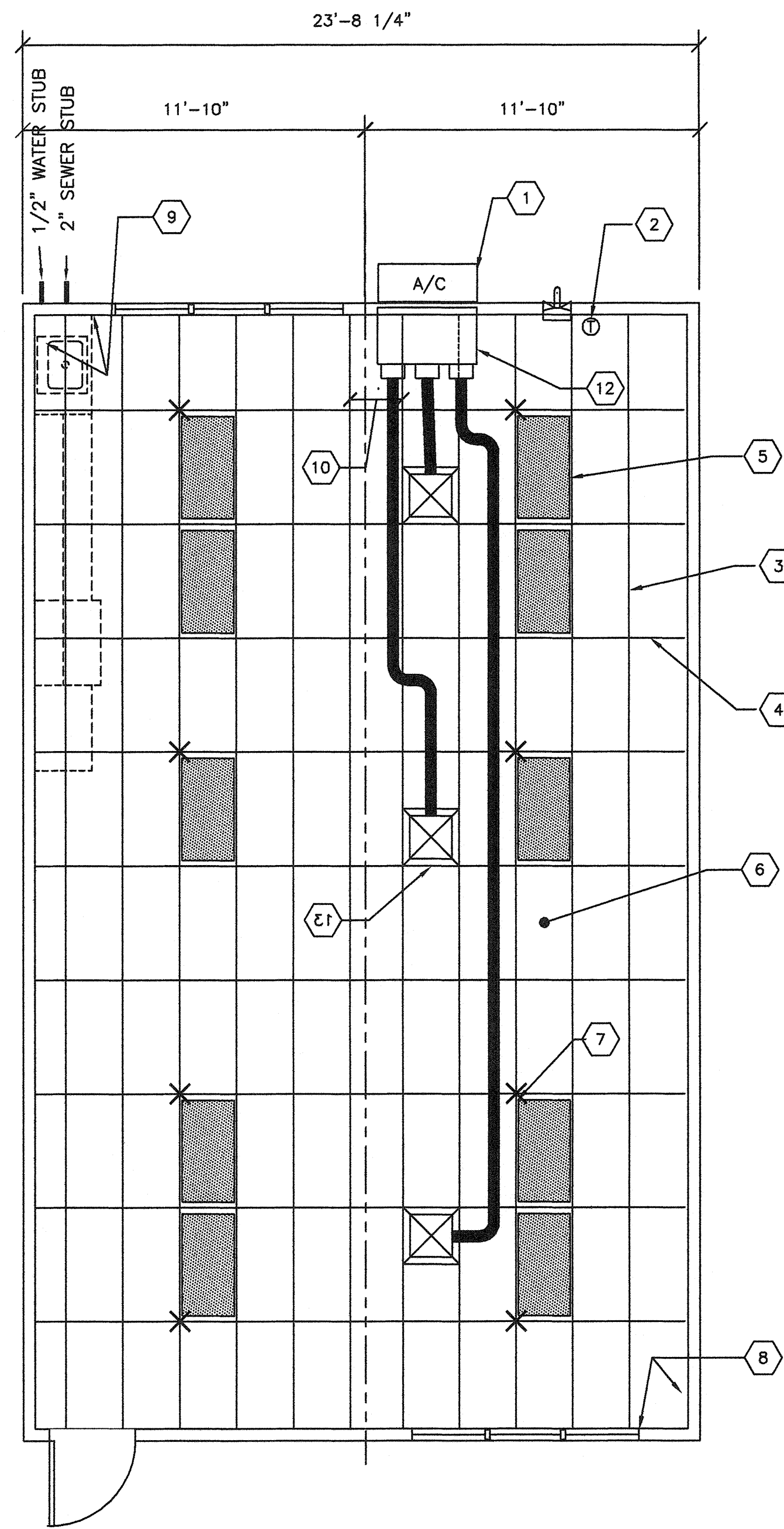
- SHEET NOTES -

- 1 WALL HUNG HVAC UNIT
- 2 THERMOSTAT @ +60" SEALED
- 3 MAIN RUNNER TYP
- 4 CROSS RUNNER TYP
- 5 INTERIOR LIGHT FIXTURE REFER TO SHEET SHEET E1 FOR SPEC'S
- 6 CEILING HEIGHT @ 8'-6" NOM
- 7 SPLAY WIRE SEE 4/M2 FOR DETAILS
- 8 FIXED CEILING END
- 9 FREE CEILING END
- 10 CENTER SECTION THAT CROSSES MODULE LINE TO BE FIELD INSTALLED
- 11 NOT USED
- 12 CONCEALED SUPPLY AIR DUCT ABOVE T-BAR CEILING
- 13 TYPICAL 4-WAY SUPPLY AIR REGISTER LOCATION AND SIZE MAY VARY PER CEILING LAYOUT AND BUILDING SIZE

NOTE:  
 WHERE TWO OR MORE HVAC UNITS SERVE A COMMON SPACE, UNITS SHALL BE EQUIPPED WITH DUCT SMOKE DETECTOR FOR AUTO SHUTDOWN. INTERCONNECT WITH FIRE ALARM SYSTEM  
 AUTOMATIC SHUT-OFF IS NOT REQUIRED WHEN ALL OCCUPIED ROOMS SERVED BY THE AIR HANDLING EQUIPMENT HAVE DIRECT ACCESS TO THE EXTERIOR AND THE TRAVEL DISTANCE DO NOT EXCEEDS 100 FT. PER CMC 609 EXEPTION #2



1 TYPICAL REFLECTED CEILING PLAN  
 M1 1/4"=1'-0"



2 TYPICAL REFLECTED CEILING PLAN  
 M1 1/4"=1'-0"

BASED ON PC 02-109695

REVISIONS		
NO	DATE	DESCRIPTION

DATE: 08/13/09  
 SCALE: NOTED  
 DRAWN BY: RS  
 SERIAL NO.:

CUSTOMER:  
 BAKERSFIELD CITY SCHOOLS  
 MUNSEY AND FREMONT SCHOOL ELEMENTARY SCHOOL

24' x 40' RELOCATABLE BUILDINGS  
 TYPICAL REFLECTED CEILING PLAN



APPROVALS:



IDENTIFICATION STAMP  
 DIV. OF THE STATE ARCHITECT  
 OFFICE OF REGULATION SERVICES  
 OS 112435  
 AC, FLS, SS  
 DATE: SEP 24 2009

PROJECT No.  
 PC  
 M1

THESE DRAWINGS AND SPECIFICATIONS ARE THE PROPERTY OF AMERICAN MODULAR SYSTEMS, INC. AND ARE NOT TO BE REPRODUCED, CHANGED OR COPIED IN ANY FORM OR MANNER, NOR ARE THEY TO BE ASSIGNED TO ANY THIRD PARTY WITHOUT THE WRITTEN AUTHORIZATION OF AMERICAN MODULAR SYSTEMS, INC.