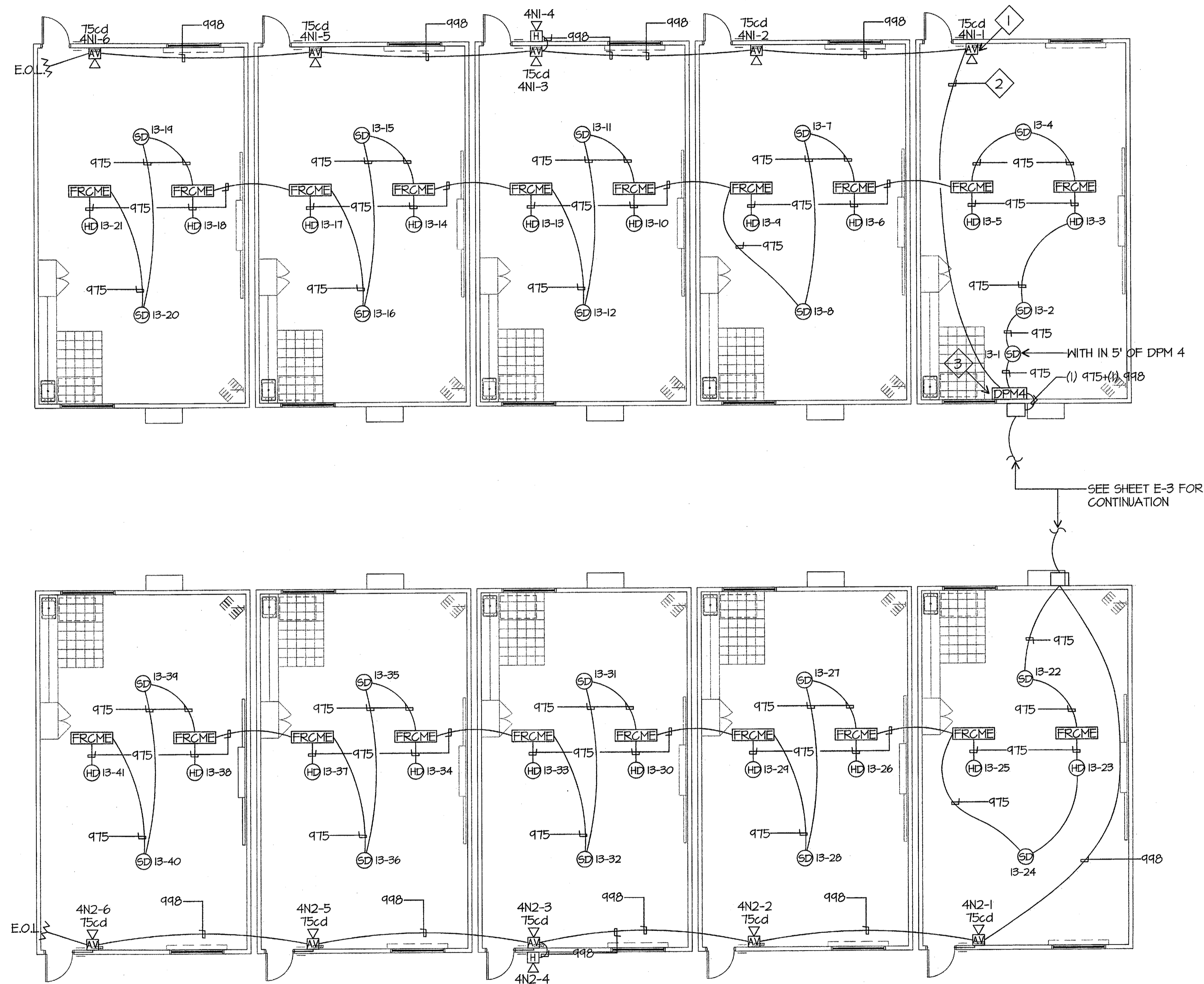
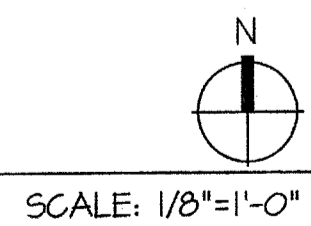


FIRE ALARM PLAN NOTES

- 1 FIRE ALARM CABLE SHALL BE INSTALLED IN 3/4" CONDUIT IN WALLS, TYPICAL.
- 2 SUPPORT FIRE ALARM CABLE EVERY 5' VIA J-HOOKS INSTALLED AT LEAST 8" ABOVE CEILING ON PERIMETER WALLS, TYPICAL.
- 3 PROVIDE 20/1 CIRCUIT BREAKER PER NFPA 72 FOR DPM.



FIRE ALARM PLAN



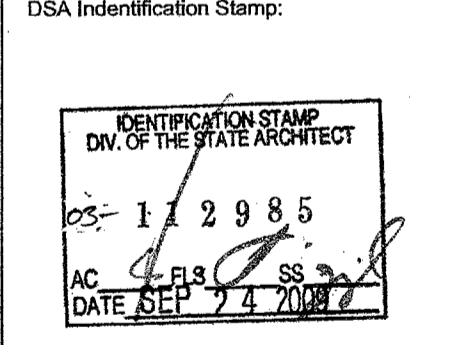
Ownership of Documents
This document, the ideas and designs, incorporated herein, as an instrument of Professional Service is the property of Integrated Designs by SOMAM, Inc. and is not to be used, in whole or in part for any other project without written authorization.
© COPYRIGHT 2009

integrated designs by SOMAM, Inc.
ARCHITECTURE • ENGINEERING • INTERIOR DESIGN • CONSTRUCTION MANAGEMENT
6011 N. Fresno, Suite 130 - Fresno, California 93710
Phone (559) 438-0887 Fax (559) 438-0887 E-Mail: design@somam.com
www.integrateddesigns.com

Revision:	Revision:	Revision:	Revision:
Rev. Date:	Rev. Date:	Rev. Date:	Rev. Date:
Revision Description:	Revision Description:	Revision Description:	Revision Description:

FIRE ALARM PLAN
Project Name & Address:
MUNSEY ELEMENTARY SCHOOL
10 NEW PORTABLE CLASSROOMS
BAKERSFIELD CITY SCHOOL DISTRICT
3801 BRAVE AVE. BAKERSFIELD, CA 93309

Issue Date:	Date:	05/02/06
Designer:	DR:	DESIGNER
DRAFTER:	FC:	CJM



Stamp(s):

JMPE
ELECTRICAL ENGINEERING
LIGHTING DESIGN
CA REGISTRATION NO. E18088
04082
3200 KING AVENUE,
SUITE 201
BAKERSFIELD, CA 93309
(805) 833-7955
FAX (805) 833-7815
E-MAIL: maloney@jmpe.net
WWW.JMPE.NET

Job No.: **3832**
Sheet No.: **E-3.1**