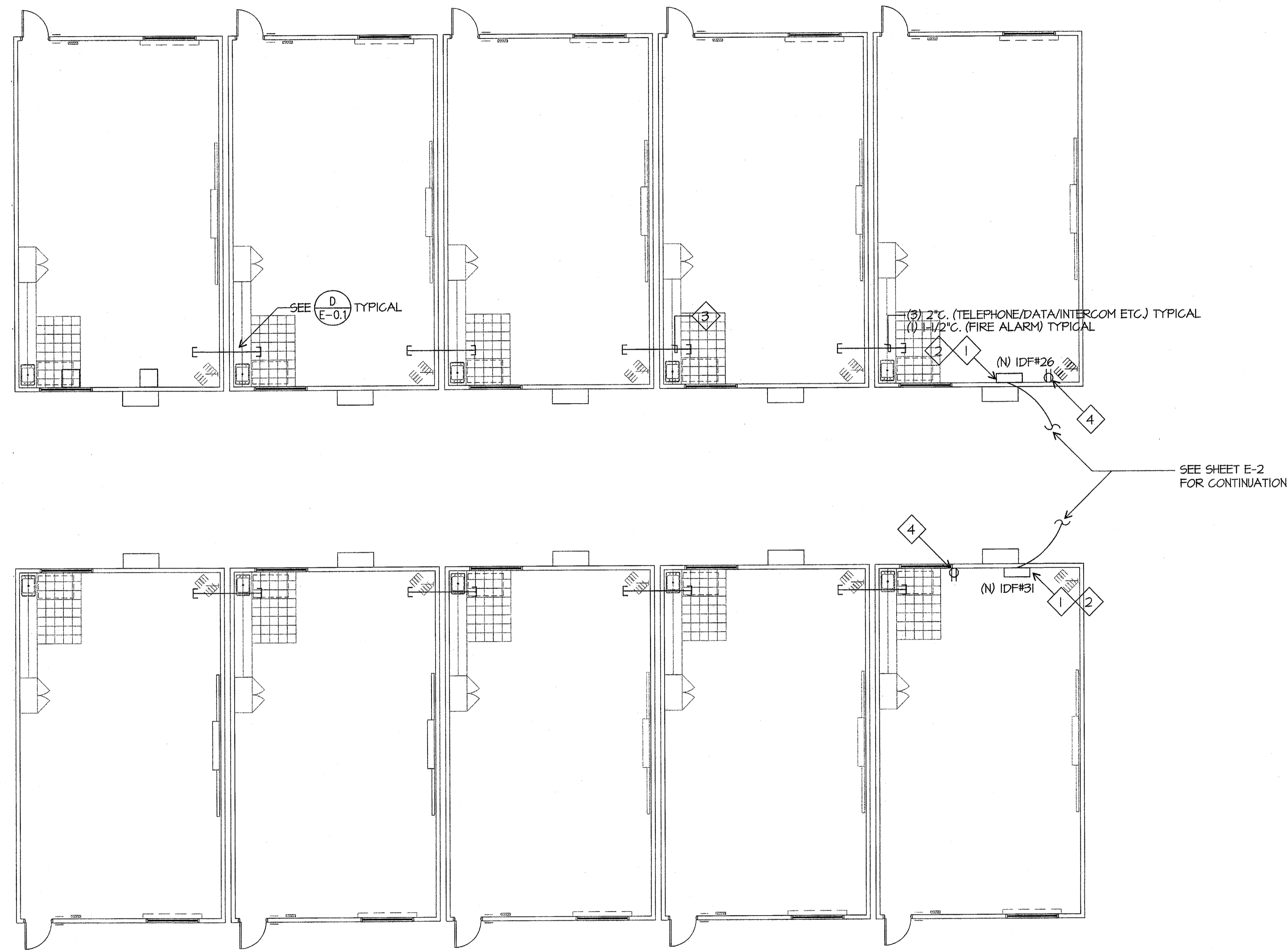
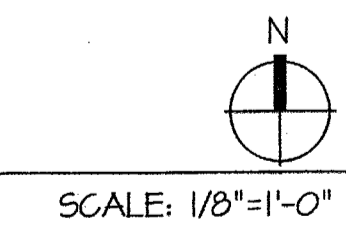


COMMUNICATION PLAN NOTES

- 1 CONNECT TO SPARE 20/1 CIRCUIT BREAKER IN PANEL PROVIDED WITH CLASSROOM.
- 2 PROVIDE (1) RE4 EQUIPMENT CABINETS WITH (1) 48 PORT PATCH PANEL, AMO BCSD CONNECTORS, BY HUBBELL COMPANY. COORDINATE WITH GARY TAYLOR, NETWORK SYSTEMS ENGINEER FOR BAKERSFIELD CITY SCHOOL DISTRICT, 661-631-4745.
- 3 SUPPORT CABLE EVERY 5' VIA J-HOOKS, INSTALLED AT LEAST 8" ABOVE CEILING ON PERIMETER WALLS, TYPICAL.
- 4 ADD RECEPTACLE NEXT TO (N) IDF. PROVIDE 20/1 CIRCUIT BREAKER FROM PANEL PROVIDED WITH PORTABLE. PROVIDE MATERIALS NEEDED FOR DEDICATED CIRCUIT TO BE USED FOR INTRUSION POWER SUPPLY. COORDINATE REQUIREMENTS WITH BAKERSFIELD CITY SCHOOL VENDOR MORGAN CLAYTON, 661-397-5511.



COMMUNICATION PLAN



Ownership of Documents
This document, the ideas and designs incorporated herein, as an instrument of Professional Service is the property of Integrated Designs by SOMAM Inc. and is not to be used, in whole or in part for any other project without written authorization.
© COPYRIGHT 2009

integrated designs by SOMAM, Inc.
ARCHITECTURE • ENGINEERING • INTERIOR DESIGN • CONSTRUCTION MANAGEMENT
8011 N. Fresno, Suite 130 - Fresno, California 93710
Phone (559) 436-0881 Fax (559) 436-0887 E-Mail: design@somam.com
www.integrateddesigns.com

Rev. No.	Rev. Date	Rev. Description	Rev. By	Rev. Date

COMMUNICATION PLAN

MUNSEY ELEMENTARY SCHOOL
10 NEW PORTABLE CLASSROOMS
BAKERSFIELD CITY SCHOOL DISTRICT
3801 BRAVE AVE. BAKERSFIELD, CA 93309

Issue Date:	Date: 05/02/06	Designer: DESIGNER	DR: DRAFTER	PC: CJM
-------------	----------------	--------------------	-------------	---------

IDENTIFICATION STAMP
DIV. OF THE STATE ARCHITECT

03-112985
AC [Signature] SS [Signature]
DATE SEP 24 2004

Stamp(s):

JMPE
ELECTRICAL ENGINEERING
LIGHTING DESIGN
CA REGISTRATION NO E15000
04082
6500 MORG AVENUE,
SUITE 201
BAKERSFIELD, CA 93309
(805) 831-7991
722 (805) 831-7913
email: jmaloney@jmpe.net
www.jmpe.net

LICENSED ARCHITECT
COURTIS E. McNALLY
No. C 29966
EXP. 6-31-09
STATE OF CALIFORNIA

Job No.: **3832**

Sheet No.: **E-2.1**

Release: JMPE/JOB#:04082/DATE:04-04-09 AC CURTIS MCNALLY