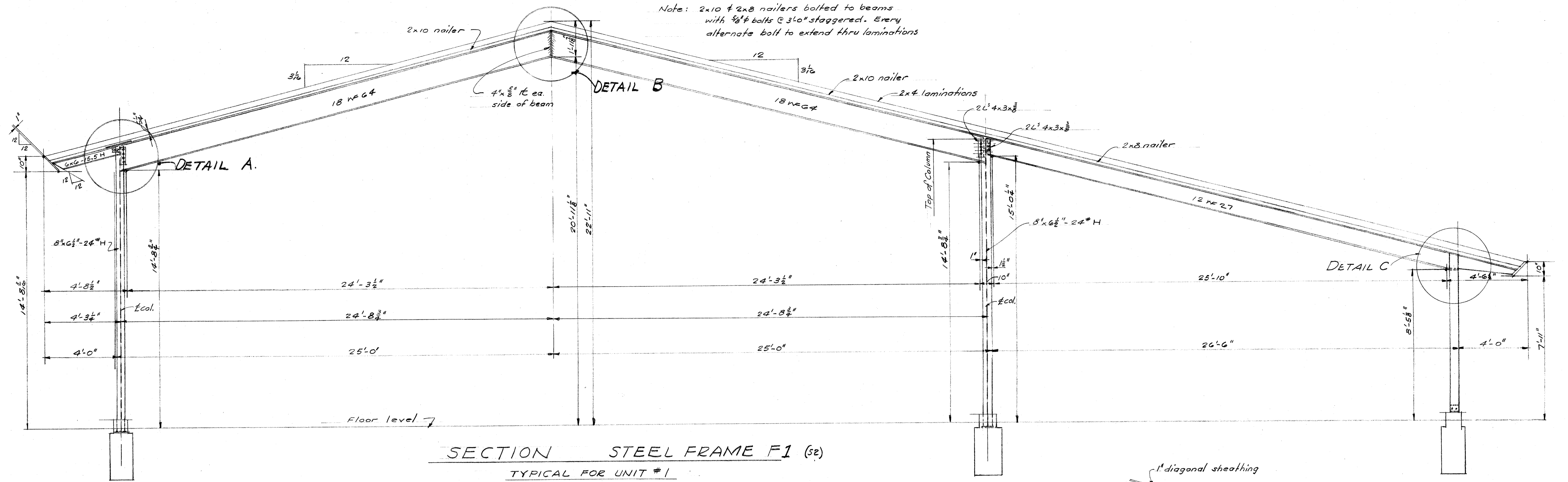
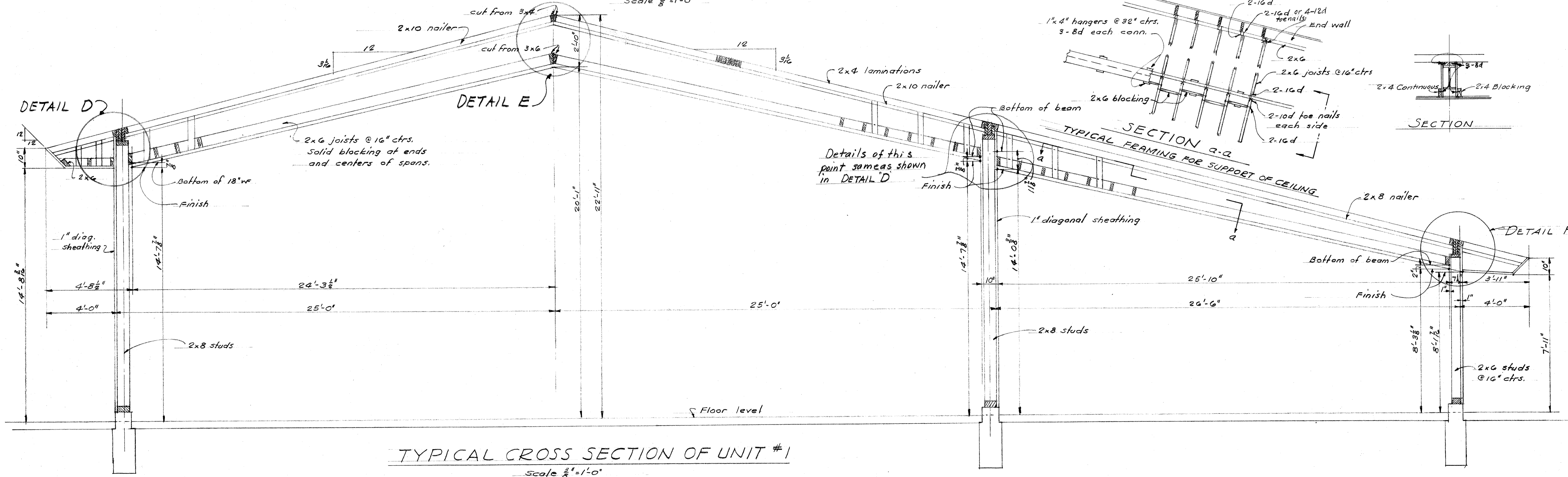


Note: 2x10 & 2x8 nailers bolted to beams with 3/8" bolts @ 3'-0" staggered. Every alternate bolt to extend thru laminations



SECTION STEEL FRAME F1 (S2)

TYPICAL FOR UNIT #1
Scale 3/8" = 1'-0"



TYPICAL CROSS SECTION OF UNIT #1

Scale 3/8" = 1'-0"

STATE OF CALIFORNIA - DEPARTMENT OF PUBLIC WORKS
DIVISION OF ARCHITECTURE
11805 APPROVED OCT - 7 1953
APPROVED BY: *Clarence E. Bellinger*
PRINCIPAL ARCHITECTURAL ENGINEER

BOARD OF EDUCATION
APPROVED:
PRES. *H. F. [Signature]*
SEC. *Virginia C. Bellinger*

FRAMING SECTION & DETAILS
UNIT 1
BEAL ROAD SCHOOL

Harold B. Hammill
HAROLD B. HAMMILL
CONSULTING STRUCTURAL ENGINEER
REG. 42 STRUCTURAL 131
SAN FRANCISCO, CALIFORNIA

Whitney Biggar
WHITNEY BIGGAR ARCHITECT
MEMBER AMERICAN INSTITUTE OF ARCHITECTS
3601 STOCKDALE HIGHWAY
BAKERSFIELD, CALIFORNIA
29285 REGISTRATION C-1128

PROJECT NO:
DRAWN BY:
CHECKED BY:
DATE:
SHEET
OF 56 **S3**