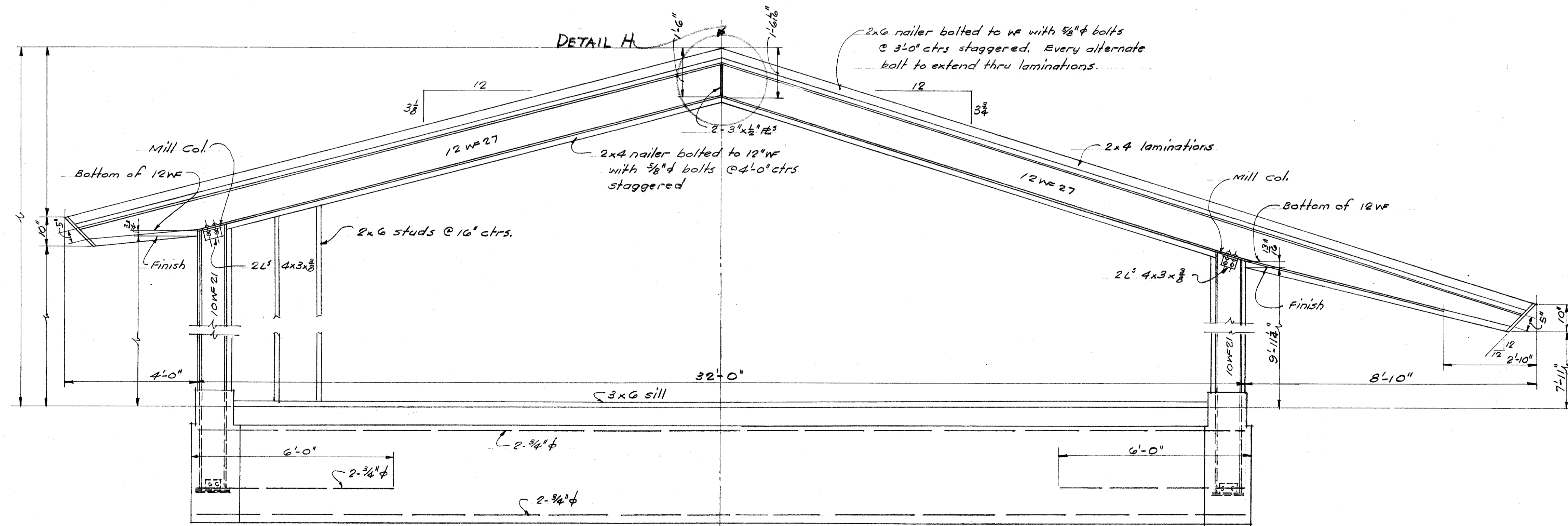


SECTION STEEL FRAME F5 FOR UNITS 3, 4 & 5 [S7, S8 & S9]
scale 1/2" = 1'-0"



SECTION STEEL FRAME F3 FOR UNIT 2 [S5]
scale 1/2" = 1'-0"

STATE OF CALIFORNIA - DEPARTMENT OF PUBLIC WORKS
DIVISION OF ARCHITECTURE
11805 APPROVED OCT - 7 1953
OFFICIAL ARCHITECTURAL ENGINEER

BOARD OF EDUCATION
APPROVED
PRES. *H. H. White*
SEC. *Virginia C. Kellenger*

STEEL FRAMES
UNITS 2, 3, 4, & 5
REAL ROAD SCHOOL

Harold B. Hammill
HAROLD B. HAMMILL
CONSULTING STRUCTURAL ENGINEER
REG. 42 STRUCTURAL 131
SAN FRANCISCO, CALIFORNIA

Whitney Biggar
WHITNEY BIGGAR ARCHITECT
MEMBER AMERICAN INSTITUTE OF ARCHITECTS
3601 STOCKDALE HIGHWAY
BAKERSFIELD, CALIFORNIA
29285 REGISTRATION C-1128

PROJECT NO:
DRAWN BY:
CHECKED BY:
DATE:
SHEET
OF 56 S11