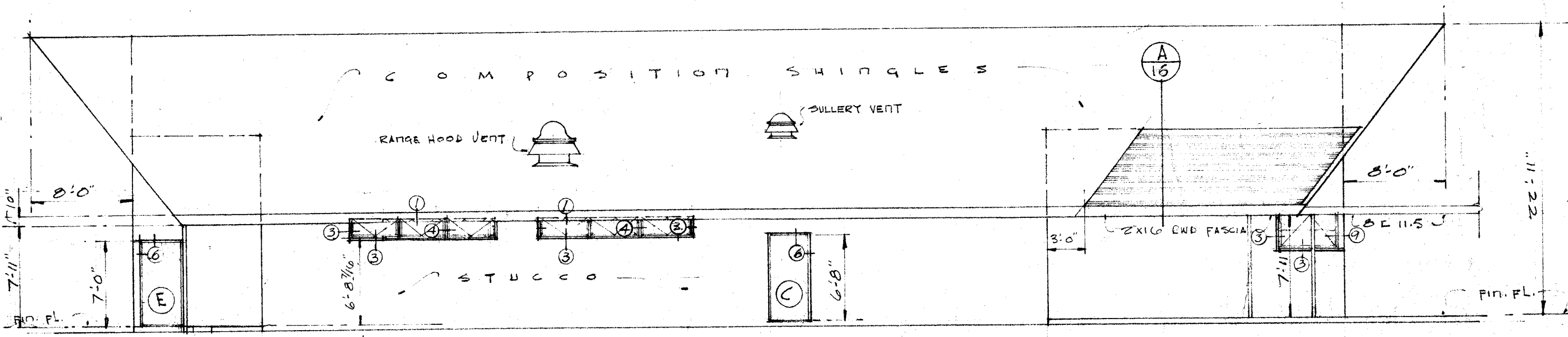
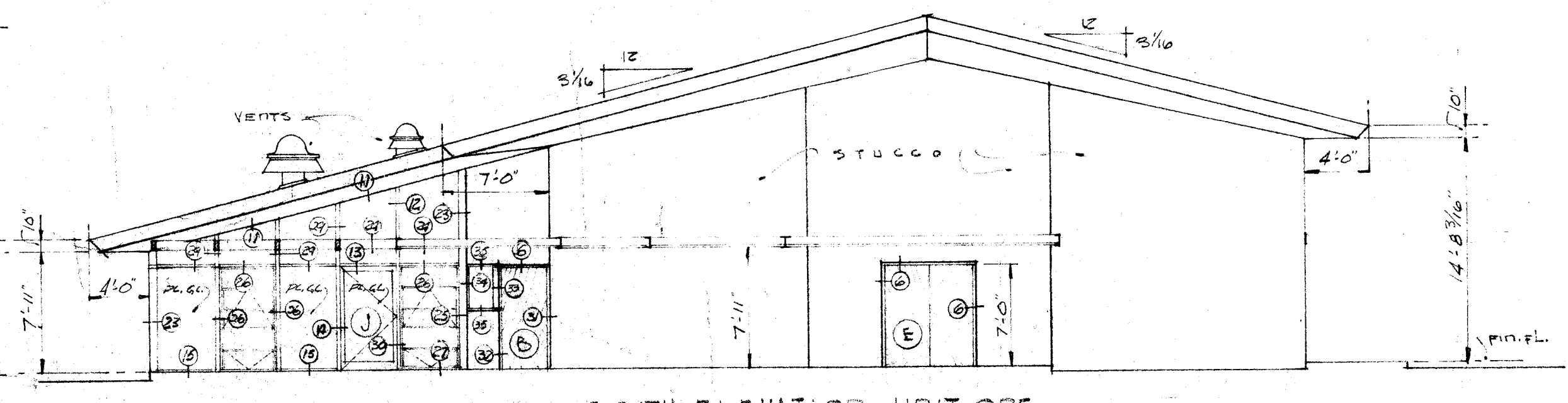


EAST ELEVATION UNIT ONE
1/8" = 1'-0"

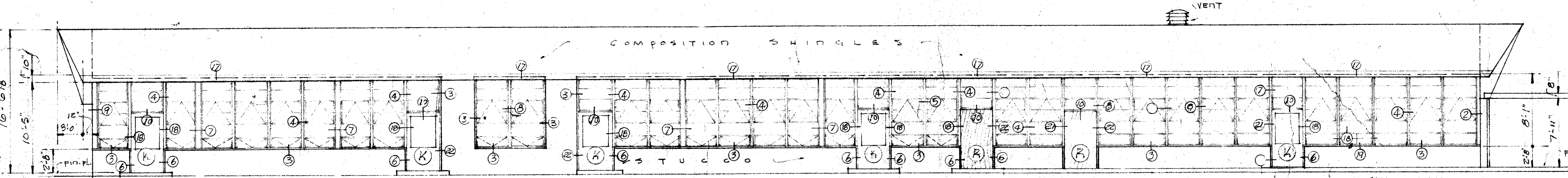
NORTH ELEVATION UNIT ONE
1/8" = 1'-0"



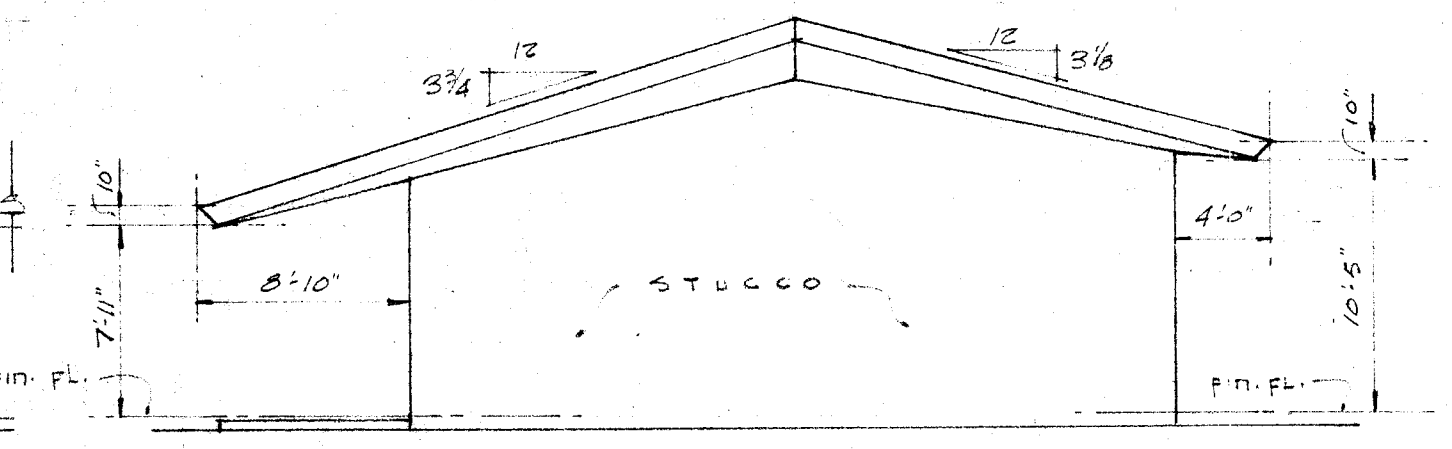
WEST ELEVATION UNIT ONE
1/8" = 1'-0"



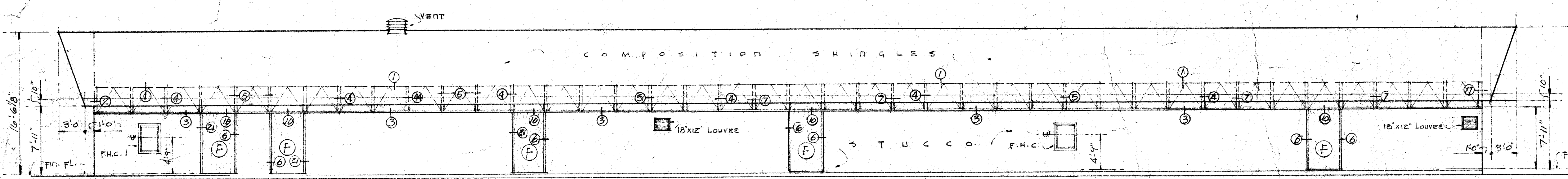
SOUTH ELEVATION UNIT ONE
1/8" = 1'-0"



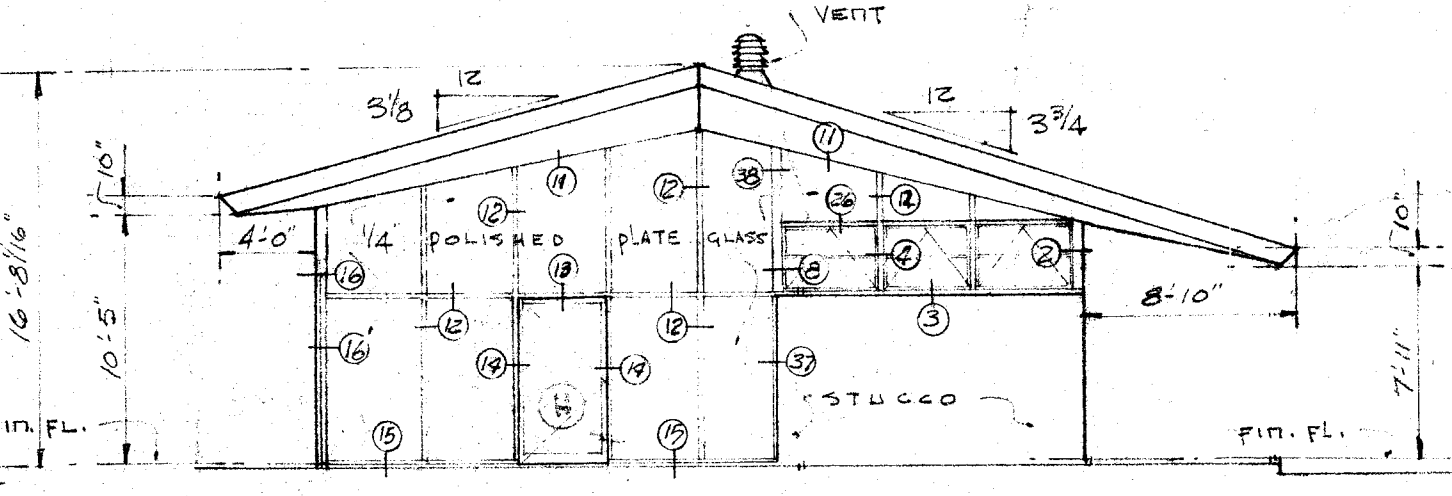
NORTH ELEVATION UNIT TWO
1/8" = 1'-0"



EAST ELEVATION UNIT TWO
1/8" = 1'-0"



SOUTH ELEVATION UNIT TWO
1/8" = 1'-0"



WEST ELEVATION UNIT TWO
1/8" = 1'-0"

NOTE: SLIDING GLASS PANELS SEE WINDOW DETAILS

DIVISION OF ARCHITECTURE

BOARD OF EDUCATION

APPROVED: [Signature] PRES.
APPROVED: [Signature] SEC.
DATE: OCT 17 1953
COUNCIL

[Signature] PRES.
[Signature] SEC.

ELEVATIONS UNITS ONE & TWO
DEAL ROAD SCHOOL

Whitney Biggar
WHITNEY BIGGAR ARCHITECT
MEMBER AMERICAN INSTITUTE OF ARCHITECTS
3601 STOCKDALE HIGHWAY
BAKERSFIELD, CALIFORNIA
29285 REGISTRATION C-1128

PROJECT NO: 6-53
DRAWN BY: GWR/EP
CHECKED BY:
DATE: 9/4/53
SHEET
OF 56 A6