
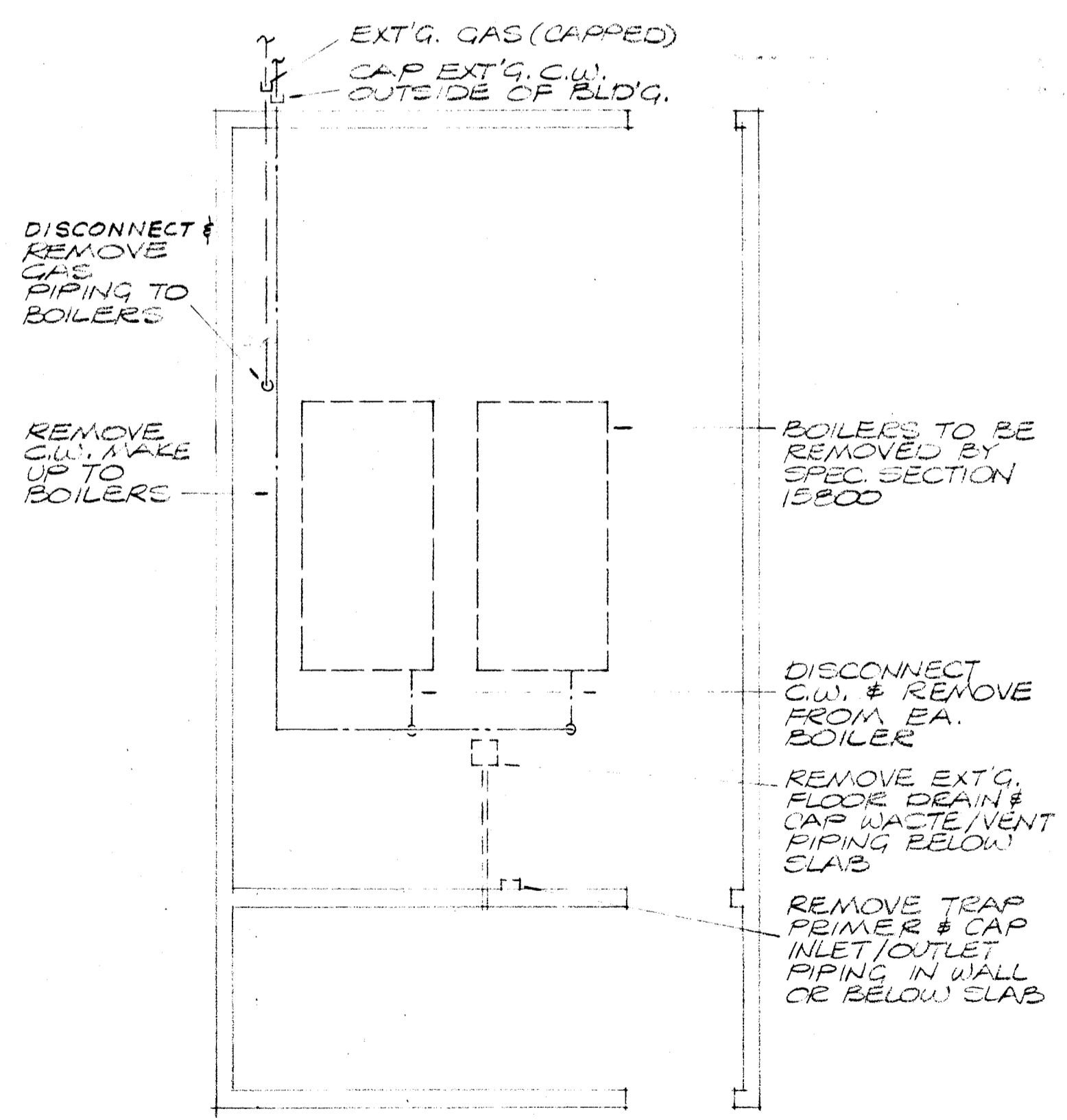
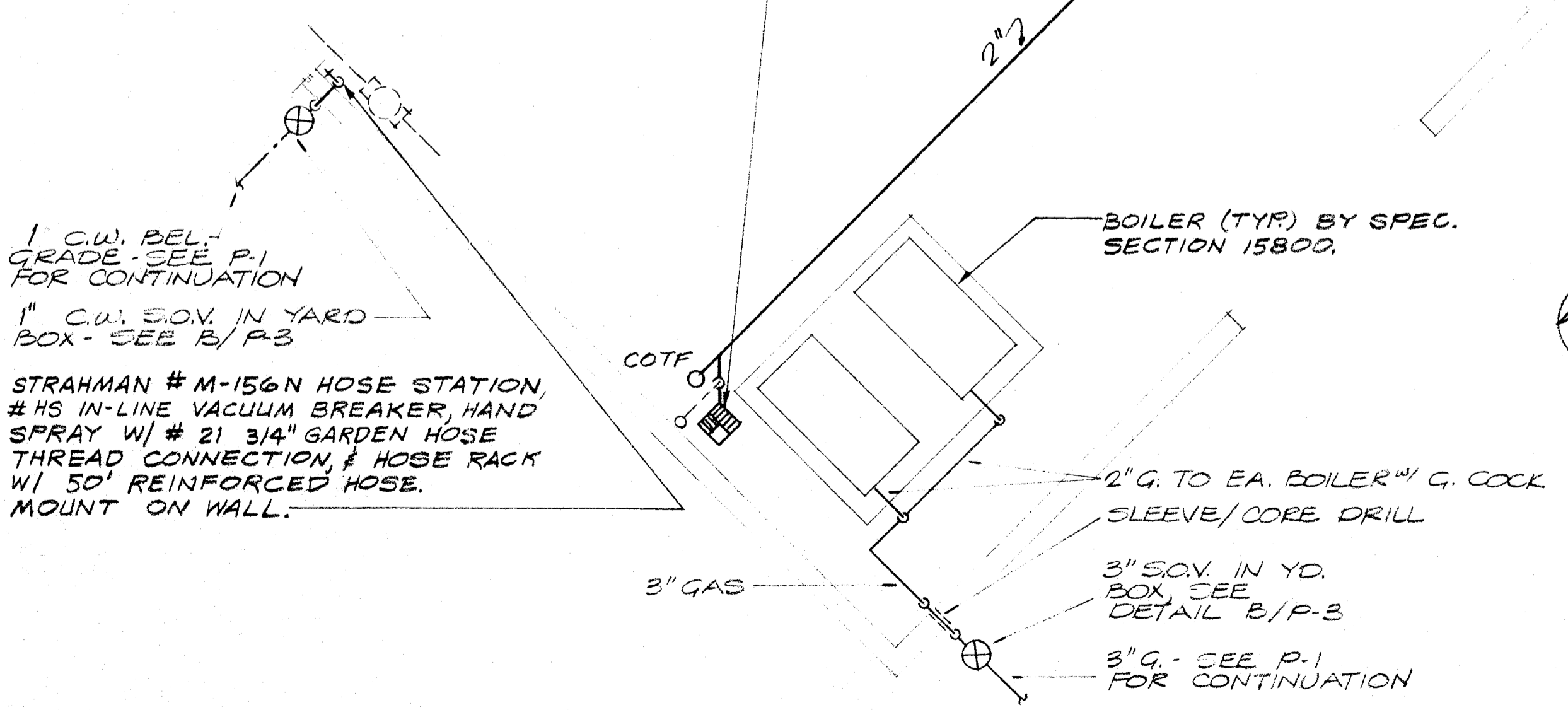


NO WORK THIS BLD'G.


PLUMBING FLOOR PLAN UNIT R-5
SCALE: 1/8" = 1'-0" 

PROVIDE ZURN #ZN-1902-K-3-11 12" X 12" X 10" DEEP A.R.E. CAST IRON BODY WITH VANDAL RESISTANT 3/4" NICKEL BRONZE GRATE, ALUMINUM DOME STRAINER, SEEPAGE FLANGE. EXTEND AND CONNECT 2" WASTE TO EXISTING 3" SOIL PIPING FROM BUILDING "A". FIELD VERIFY EXACT LOCATION. P-1. EXTEND 2" VENT UP SIDE OF MECHANICAL EQUIPMENT ENCLOSURE WALL AND TERMINATE FLUSH WITH TOP OF WALL.



GENERAL NOTES:
1. FOR PIPE TRENCH AND PENETRATIONS SEE DETAIL 7 IN SPECIFICATIONS.

TITLE 24 & 1979 CODE

MECH. ROOM PLB'G. PLAN (B)
SCALE: 1/4" = 1'-0" 

PLUMBING PLAN - MECHANICAL EQ'T. ENCLOSURE (A)
SCALE: 1/4" = 1'-0" 

MUNSEY SCHOOL MODERNIZATION
BAKERSFIELD CITY SCHOOL DISTRICT
BAKERSFIELD, CALIFORNIA

APPROVED
Department of General Services
Office of the State Architect
FTR # ()
Signed: State Architect
Date: 2/26/90

ONLY
FEB 27 1990

FRANK MITCHELL - Expires 9/1/90
JOHN FRANK MITCHELL, INC.
CONSULTING MECHANICAL ENGINEERS
444 WEST JEFFERSON SUITE 107
FRESNO, CALIFORNIA 93721
573.399

John Frank Mitchell
Architects, Planners

Kendrick Design Group

job number
8712

sheet number

P-6
OF 6

2115 19th Street, Bakersfield, CA 93301 • (805) 322-1863