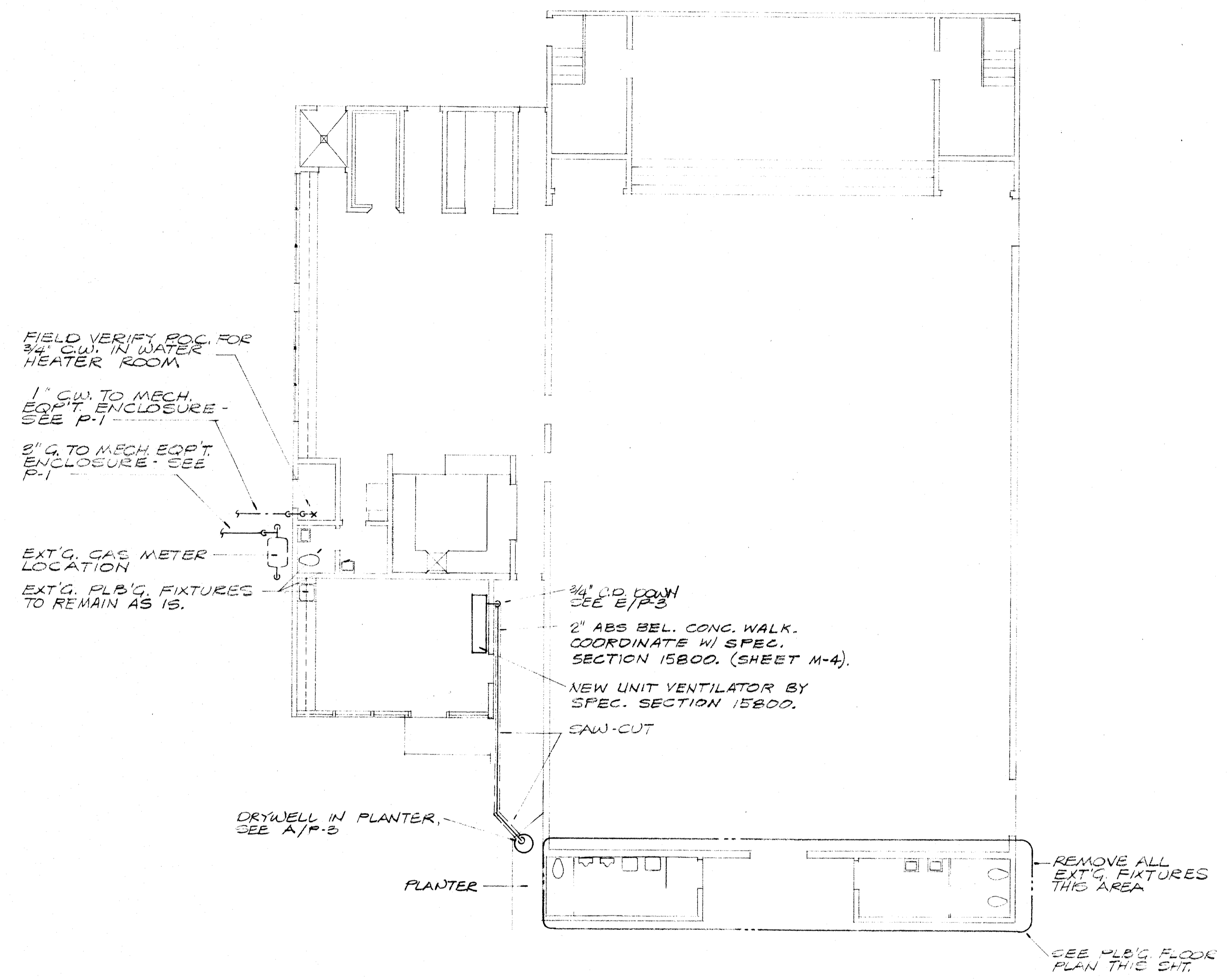


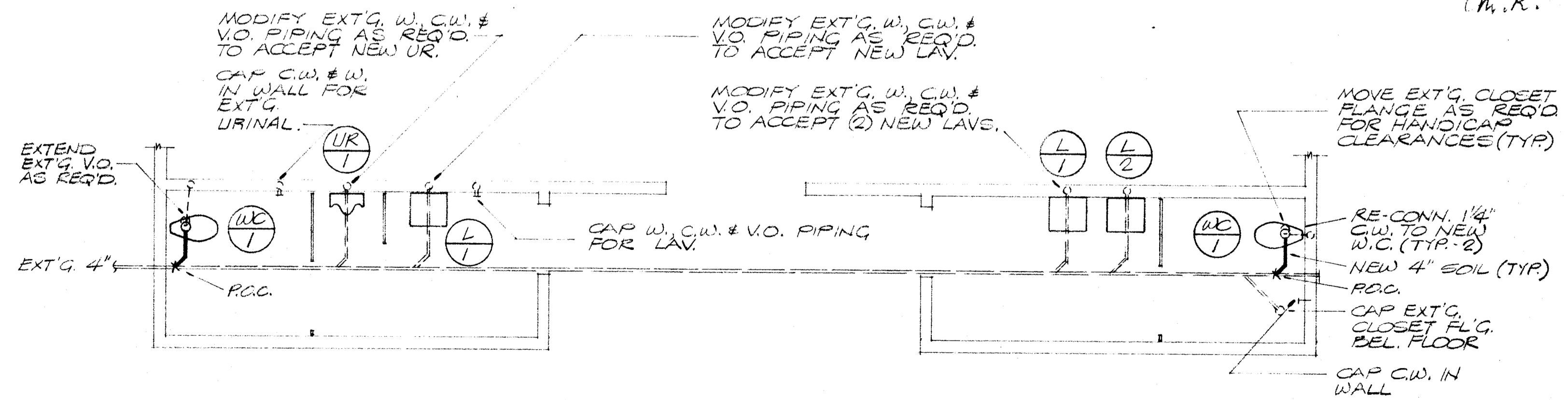
PLUMBING FIXTURE SCHEDULE

MARK	FIXTURE	CONNECTIONS				DESCRIPTION
		CW	HW	SOIL	VENT	
WC 1	WATER CLOSET (HANDICAP)	1-1/2"	-	4"	2"	AMERICAN STANDARD "WATER-SAVER CADET" #9469.016, FLOOR MTD., ELONGATED BOWL; BENEKE #527SS SEAT-WHITE; SLOAN ROYAL #110-3 FLUSH VALVE.
WC 2	WATER CLOSET (HANDICAP)	3/4"	-	4"	2"	AMERICAN STANDARD "ELONGATED WATER-SAVER CADET" MODEL #2108.408, 18" BOWL HEIGHT; BENEKE #527 SS SEAT-WHITE.
L 1	LAVATORY (HANDICAP)	1/2"	-	2"	1-1/2"	AMERICAN STANDARD "LUCERNE" MODEL #356.421, 20" X 18", SINGLE HOLE, #2411.015 GRID DRAIN, CHICAGO #355-E12 "TIP-TAP" SELF-CLOSING FAUCET INDEXED "C" ADJUST FAUCET TO STAY OPEN FOR 10 SECONDS; ZURN ZR-1231 CONCEALED ARM SUPPORT SYSTEM, PROVIDE 29" CLEARANCE FROM LOWER EDGE OF APRON TO FLOOR.
L 2	LAVATORY	1/2"	-	2"	1-1/2"	SAME AS L-2 ABOVE EXCEPT LESS HANDICAP REQUIREMENTS.
L 3	LAVATORY	1/2"	1/2"	2"	1-1/2"	AMERICAN STANDARD "LUCERNE" MODEL 0355.012, 20" X 18", 4" CENTERS, #2411.015 GRID DRAIN, #2000.100 "CERAMIX" FAUCET WITHOUT ROD AND WASTE; ZURN #ZR-1231 CONCEALED ARM SUPPORT SYSTEM, PROVIDE 29" MIN. CLEARANCE FROM LOWER EDGE OF APRON TO FLOOR, INSULATE EXPOSED HW AND WASTE PIPING TO MEET HANDICAP REQUIREMENTS.
UR 1	URINAL (HANDICAP)	1-1/4"	-	2"	1-1/2"	AMERICAN STANDARD "ALBROOK" #6540.017, WALL MTD.; SLOAN ROYAL #180 FLUSH VALVE; ZURN 1222 SERIES CARRIER MOUNT AT 17" MAX. TO LIP AND 44" MAX. TO $\phi$ OF FLUSH VALVE. PROVIDE COTW.
S 1	SINK	1/2"	-	2"	1-1/2"	HAWS MODEL 4120, 30" X 20", ENAM. C.I., #5055 BUBBLER W/4-ARM HANDLE MTD. ON RIGHT FRONT. #6455 STRAINER AND TAILPIECE, S.S. MTG. RIM; CHICAGO #350 QUATURN SINGLE DECK MOUNTED SINK FITTING W/NO. GN-2A-E3 RIGID GOOSENECK SPOUT AND NO. E3 VANDAL RESISTANT SOFTFLOW MTD. LEFT REAR. PROVIDE NEW ANGLE STOP AND SUPPLY.
HB 1	HOSE BIBB	3/4"	-	-	-	EXTERIOR - CALCO ROUGH BRASS WITH LOOSE KEY AND WATTS MODEL NO. 8A ATMOSPHERIC TYPE BACKFLOW PREVENTER. PATTERN SHALL BE AS SCHEDULED ON THE DRAWINGS.



PLUMBING FLOOR PLAN UNIT A

SCALE: 1/8" = 1'-0"



PLUMBING FLOOR PLAN

SCALE: 1/4" = 1'-0"

MUNSEY SCHOOL MODERNIZATION  
BAKERSFIELD CITY SCHOOL DISTRICT  
BAKERSFIELD, CALIFORNIA

APPROVED  
Department of General Services  
Office of the State Architect  
FEB 21 1990

FRANK MITCHELL - ARCHITECT - LICENSE 97170  
JOHN FRANK MITCHELL, INC.  
CONSULTING MECHANICAL ENGINEERS  
444 WEST JEFFERSON SUITE 107  
FRESNO, CALIFORNIA 93727  
PHONE 973-3394

2115 19th Street, Bakersfield, CA 93301 • (805) 322-1863

Kendrick  
Design  
Group

job number  
5712

sheet number

P-2  
OF 6