

JOHN FRANK MITCHELL, INC.
CONSULTING MECHANICAL ENGINEERS
444 WEST JENSEN SUITE 107
FRESNO, CALIFORNIA 93732
PHONE 973-1199

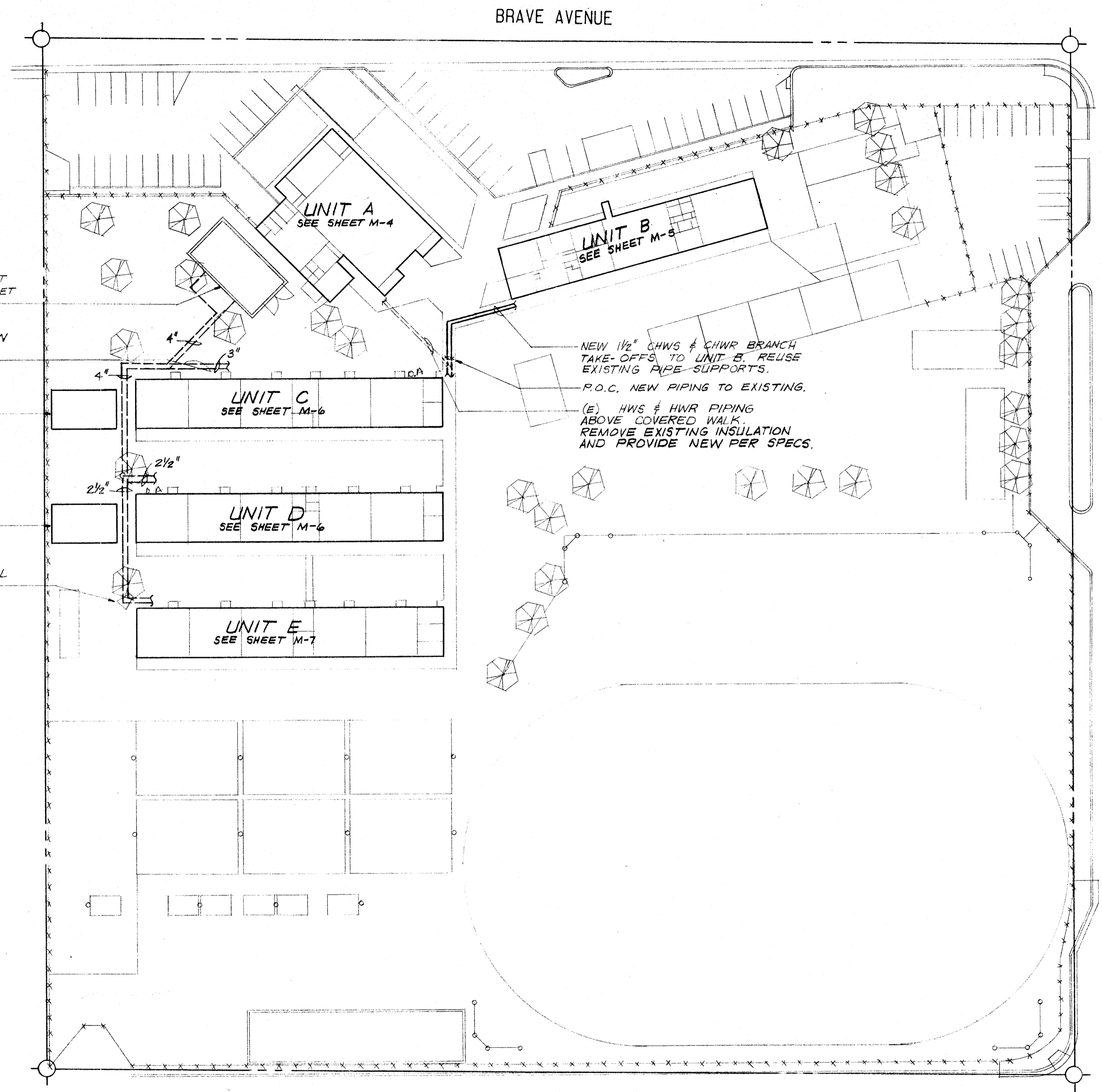
EXPIRES 9/7/90

FEB 27 1990

ONLY

John Frank Mitchell, Inc. c. 11000 AIA
architects • planners

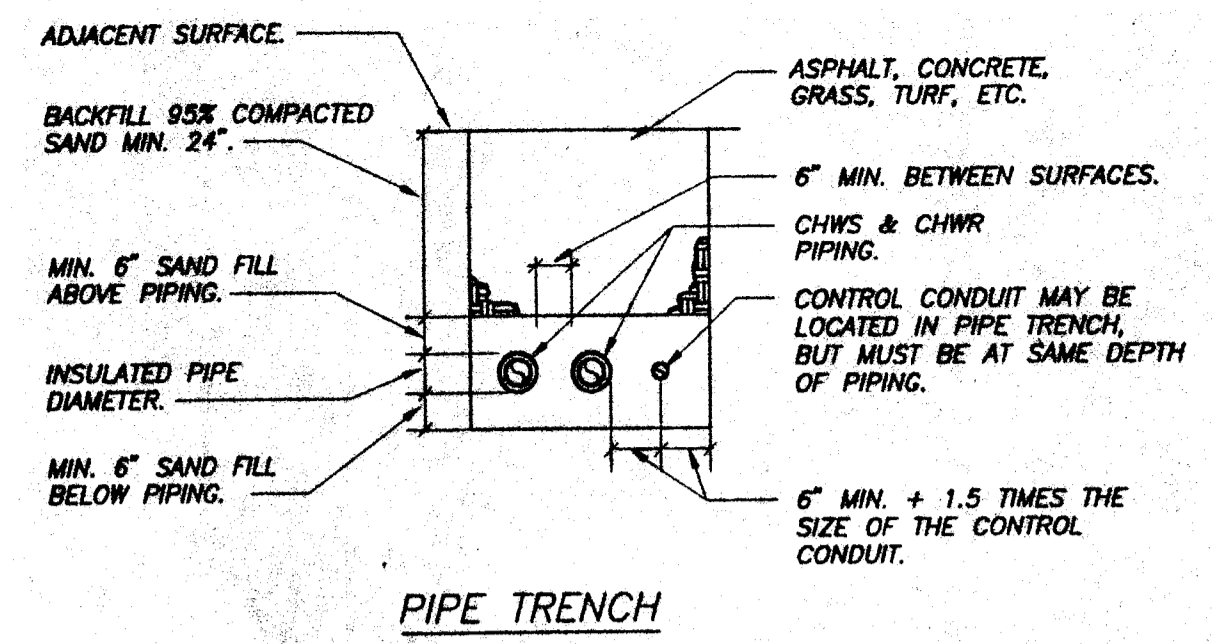
Kendrick Design Group



AIR CONDITIONING SITE PLAN

SCALE: 1" = 40'-0"

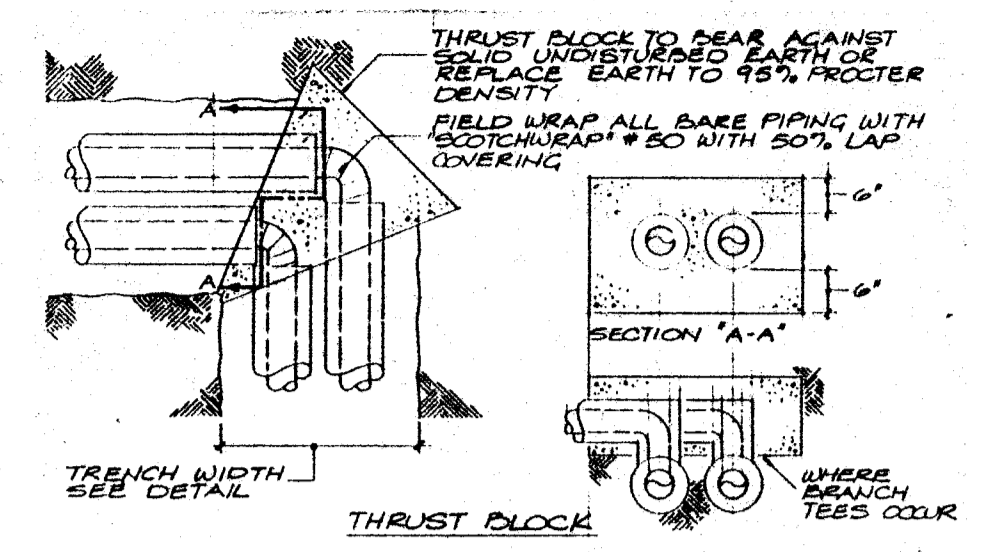
FOR COMPLETE SITE PLAN DETAILS REFER TO ARCHITECTURAL SITE PLAN.



DETAIL

NO SCALE

- NOTE:
- NO CONDUIT OTHER THAN THAT SHOWN ABOVE IS TO BE INSTALLED IN MECHANICAL PIPING TRENCH.
 - NO ELECTRICAL CONDUIT IS TO BE INSTALLED IN TRENCHES FOR MECHANICAL PIPING.



DETAIL

NO SCALE

- NOTE:
- THRUST BLOCK TO COMPLETELY ENCLOSE UNINSULATED PIPING. THRUST BLOCKS ARE REQUIRED AT EVERY CHANGE IN DIRECTION AND AT ALL BRANCH TAKE-OFFS.

SHEET INDEX	
SHEET	DESCRIPTION
M-1	SITE PLAN
M-2	SCHEDULES AND MECHANICAL EQUIPMENT ENCLOSURE
M-3	FLOW DIAGRAM AND CONTROLS
M-4	UNIT A FLOOR PLAN
M-5	UNIT B FLOOR PLAN
M-6	UNIT C, UNIT D FLOOR PLANS
M-7	UNIT E, R1, R2 FLOOR PLANS
M-8	DETAILS
M-9	DEMOLITION PLANS

- SPECIFICALLY OMITTED FROM THE SERVICES OF JOHN FRANK MITCHELL, INC., ARE ALL DESIGN AND CONSTRUCTION REVIEW SERVICES RELATING TO THE CONTRACTOR'S SAFETY PRECAUTIONS OR TO MEANS, METHODS, TECHNIQUES, SEQUENCES, OR PROCEDURES REQUIRED FOR THE CONTRACTOR TO PERFORM HIS WORK, BUT NOT RELATING TO THE FINAL OR COMPLETED STRUCTURE. OMITTED SERVICES INCLUDE BUT ARE NOT LIMITED TO SHORING, SCAFFOLDING, UNDERPINNING, TEMPORARY RETAINMENT OF EXCAVATIONS, ANY ERECTION METHODS AND BRACING.
- CONTRACT DRAWINGS FOR THE EXISTING FACILITY ARE ON FILE AT THE OFFICE OF THE ARCHITECT, KENDRICK DESIGN GROUP. FOR THE PURPOSE OF MANDATORY REFERENCE BEFORE SUBMITTING BID, CONTRACTOR SHALL VISIT THE JOBSITE AND INSPECT THE EXISTING CONDITIONS AND, BASED ON THE REVIEWED SITE CONDITIONS AND REFERENCED DRAWINGS, MAKE THE MODIFICATIONS AND EXTENSIONS TO THE EXISTING SYSTEMS AS GENERALLY DELINEATED. NO CLAIM FOR EXTRA SUMS WILL BE ALLOWED DUE TO THE CONTRACTOR'S FAILURE TO PROPERLY EXAMINE THE SITE AND REFERENCED DRAWINGS.
- ALL MECHANICAL AND ELECTRICAL EQUIPMENT SHALL BE BRACED OR ANCHORED TO RESIST A HORIZONTAL FORCE ACTING IN ANY DIRECTION USING THE FOLLOWING CRITERIA:

FIXED EQUIPMENT ON GRADE	22% OF OPERATING WEIGHT
FIXED EQUIPMENT ON STRUCTURE	33% OF OPERATING WEIGHT
EMERGENCY POWER EQUIPMENT ON GRADE	33% OF OPERATING WEIGHT
EMERGENCY POWER EQUIPMENT ON STRUCTURE	50% OF OPERATING WEIGHT

FOR FLEXIBLE MOUNTED EQUIPMENT USE 2 X THE ABOVE VALUES.
SIMULTANEOUS VERTICAL FORCE - USE 1/3 X HORIZONTAL FORCE.

WHERE ANCHORAGE DETAILS ARE NOT SHOWN ON THE DRAWINGS THE FIELD INSTALLATION SHALL BE SUBJECT TO THE APPROVAL OF THE MECHANICAL ENGINEER AND THE FIELD REPRESENTATIVE OF THE OFFICE OF THE STATE ARCHITECT.
- ANY CUTTING, DRILLING, CORING OR SAW CUTTING OF EXISTING CONSTRUCTION ELEMENTS TO BE DONE ONLY WHEN SO DETAILED IN DRAWINGS OR APPROVED BY THE ARCHITECT OR STRUCTURAL ENGINEER AND BY THE OSA REPRESENTATIVE.

AIR CONDITIONING LEGEND

SYMBOL	ITEM	ABBR.	SYMBOL	ITEM	ABBR.
[Symbol]	DUCT		[Symbol]	CHILLED WATER SUPPLY	CWS
[Symbol]	DUCT WITH ACOUSTICAL LINING		[Symbol]	CHILLED WATER RETURN	CWR
[Symbol]	SUPPLY AIR DUCT DROP		[Symbol]	CHILLED AND HOT WATER SUPPLY	CHWS
[Symbol]	RETURN AIR DUCT DROP		[Symbol]	CHILLED AND HOT WATER RETURN	CHWR
[Symbol]	SUPPLY AIR DUCT RISE		[Symbol]	GATE VALVE	G.V.
[Symbol]	RETURN AIR DUCT RISE		[Symbol]	GLOBE VALVE	G.L.V.
[Symbol]	TURNING VANES		[Symbol]	CHECK VALVE	C.V.
[Symbol]	EXTRACTOR		[Symbol]	STRAINER	
[Symbol]	VOLUME CONTROL DAMPER	V.C.D.	[Symbol]	STRAINER WITH COCK	
[Symbol]	FIRE DAMPER WITH ACCESS PANEL	F.D.	[Symbol]	UNION	
[Symbol]	THERMOSTAT @ ± 70°		[Symbol]	PLUG VALVE	P.V.
[Symbol]	PRESSURE RELIEF VALVE	P.R.V.	[Symbol]	BUTTERFLY VALVE	B.V.
[Symbol]	DIRECTION OF FLOW		[Symbol]	REDUCER OR INCREASER	
[Symbol]	SUPPLY AIR	S.A.	[Symbol]	POINT OF CONNECTION	P.O.C.
[Symbol]	RETURN AIR	R.A.	[Symbol]	HOT WATER SUPPLY	HWS
[Symbol]	OUTSIDE AIR	O.A.	[Symbol]	HOT WATER RETURN	HWR
[Symbol]	PIPING TURN DOWN		[Symbol]	CHILLED AND HOT WATER SUPPLY BELOW GRADE	CHWS
[Symbol]	PIPING TURN UP		[Symbol]	CHILLED AND HOT WATER RETURN BELOW GRADE	CHWR
[Symbol]	SHEET METAL	S/M	[Symbol]	EXISTING PIPING ABOVE & BELOW GRADE	
[Symbol]	GALVE	GA.	[Symbol]	GALVANIZED	GALV.
[Symbol]	WITH	W/	[Symbol]	DIAMETER	DIA.
[Symbol]	TYPICAL	TYP.	[Symbol]	EXISTING	(E)