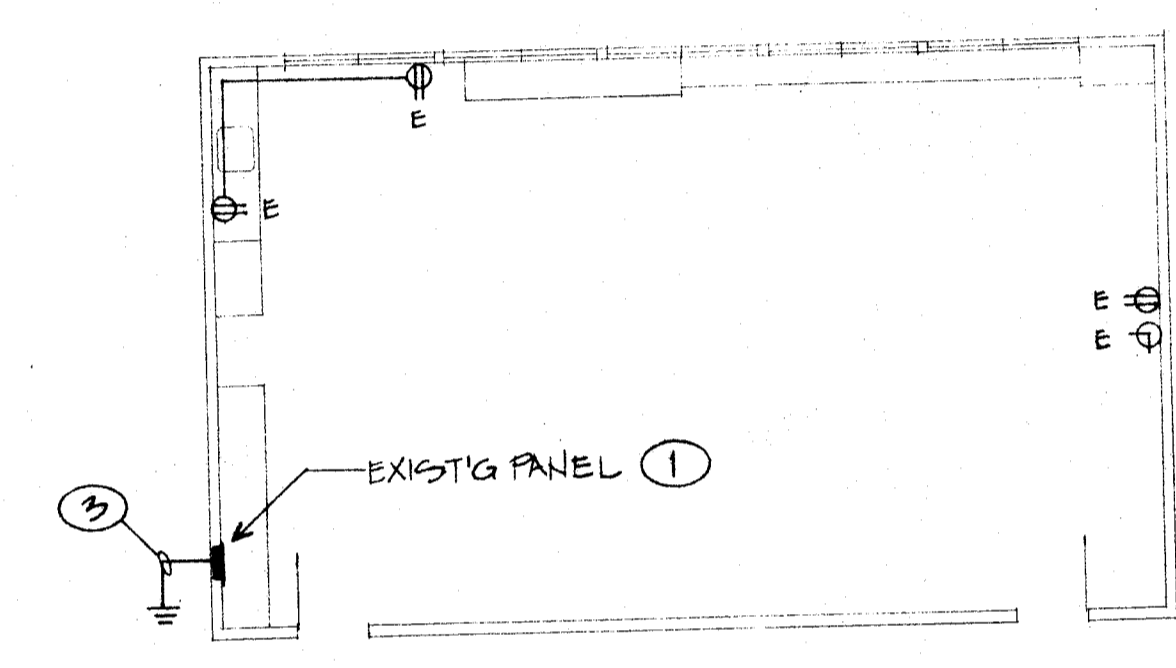


- ① REPLACE EXIST'G FLUSH MOUNTED PANEL WITH NEW (120/200V 1Ø 75W, 60A LOAD CENTER WITH G-20/1 BKRS & 40/2 MAIN). RECONNECT BRANCH CIRCUITS, PATCH WALL AS REQ'D.
- ② SAME AS ① EXCEPT 7-20/1 BKRS & 40/2 MAIN.
- ③ 1"Ø CU TO NEW GROUND ROD.
- ④ 3/4"Ø W/ WEATHERHEAD AT ROOF (HT. & BRACING AS REQ'D.).
- ⑤ OVERHEAD CABLE TO F.A. MASTER PER SHEET #E.1.

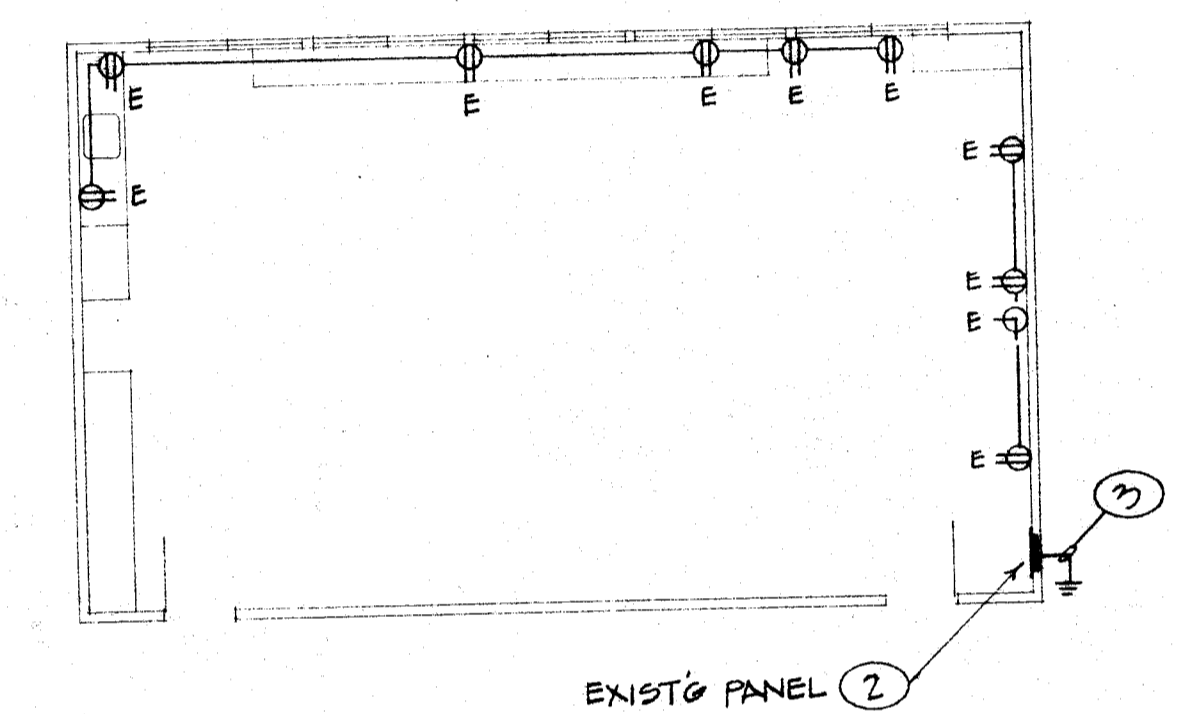
MUNSEY SCHOOL MODERNIZATION
 BAKERSFIELD CITY SCHOOL DISTRICT
 BAKERSFIELD, CALIFORNIA

APPROVED
 Department of General Services
 Office of the State Architect
FEB 27 1989
 Structural Safety Section
 Checked By: [Signature]

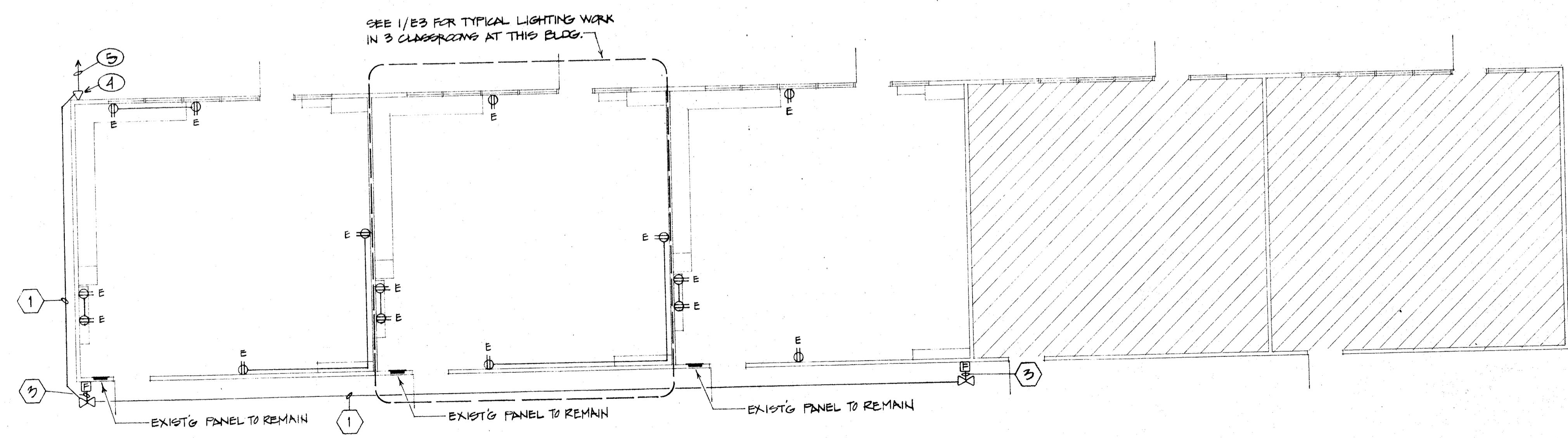
FILE IN THIS SECTION ONLY
FEB 27 1989
 Structural Safety Section



ELECTRICAL PLAN - BLDG. "R1"
 SEE 1/E3 FOR LIGHTING WORK IN THIS CLASSROOM.
 SCALE: 1/8" = 1'-0"



ELECTRICAL PLAN - BLDG. "R2"
 SEE 1/E3 FOR LIGHTING WORK IN THIS ROOM.
 SCALE: 1/8" = 1'-0"



ELECTRICAL PLAN - BLDG. "R5"
 SEE 1/E3 FOR TYPICAL LIGHTING WORK IN 3 CLASSROOMS AT THIS BLDG.
 SCALE: 1/8" = 1'-0"

TITLE 24 & 1979 UBC
 Department of Consumer Services
 Office of the State Architect
FEB 27 1989
 Structural Safety Section
 Checked By: [Signature]

Spig...
 ARCHITECTS • PLANNERS
 1015 10th Street, Bakersfield, CA 93301 • (805) 392-1863

CORNELIUS ENGINEERING, INC.
 Consulting Electrical Engineer
 718 W. Main St. - Ph. 733-2471
 Visalia, California 93291
 David Cornelius
 Captain 718

job number
8712

sheet number

E-8