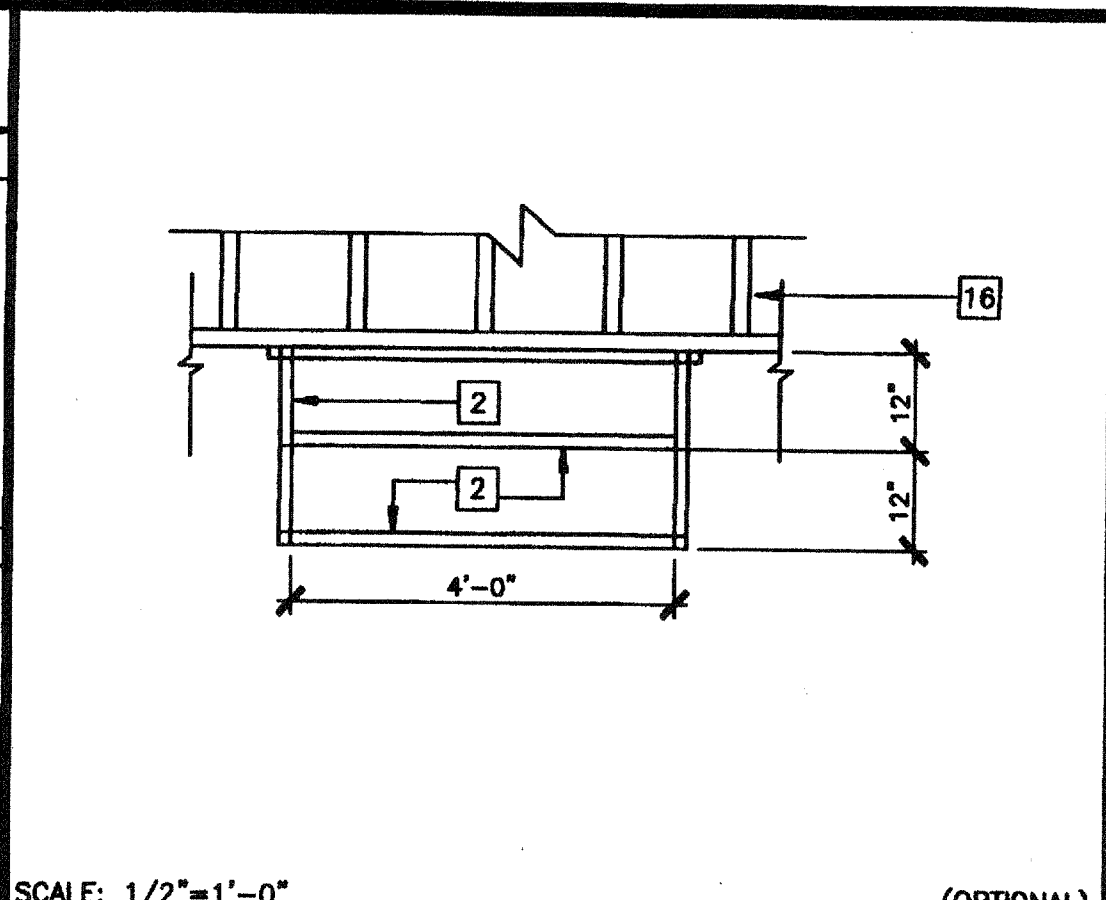
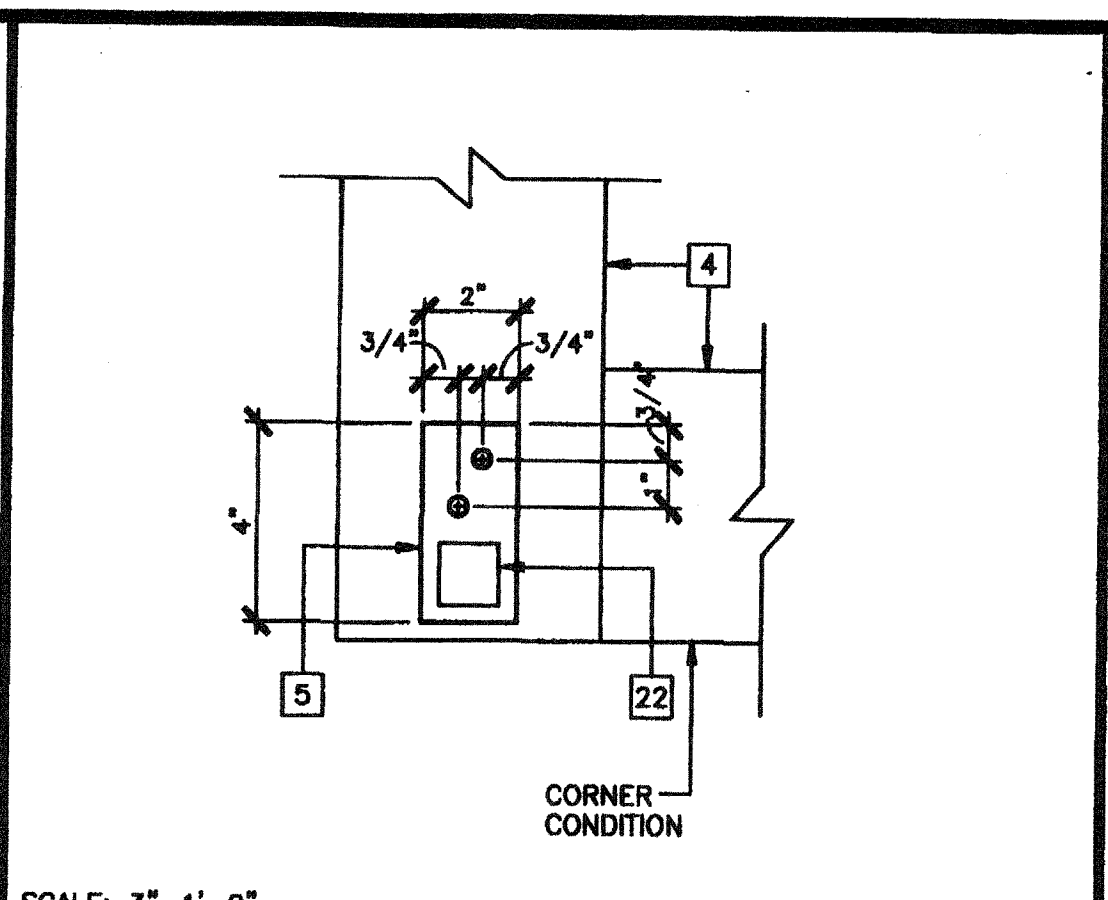


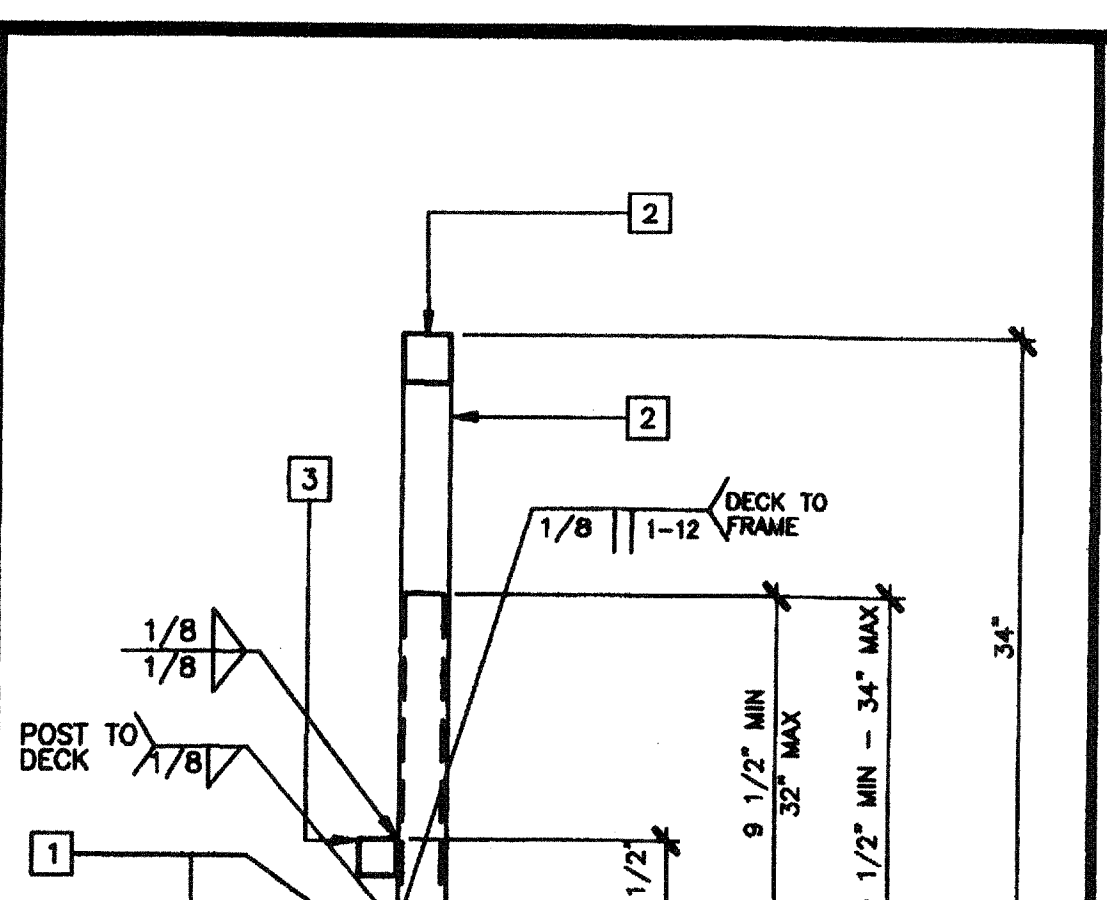
STAIR SECTION 16



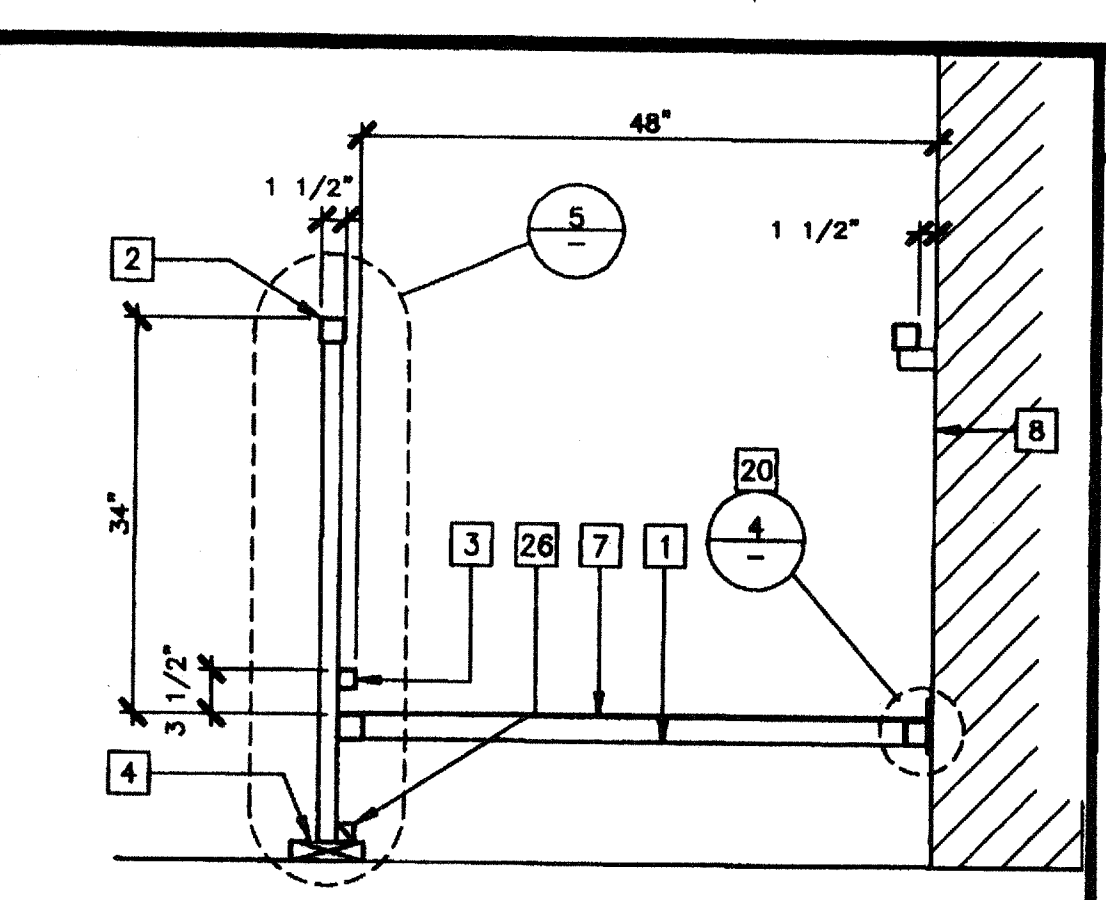
STAIR FRAMING PLAN 12



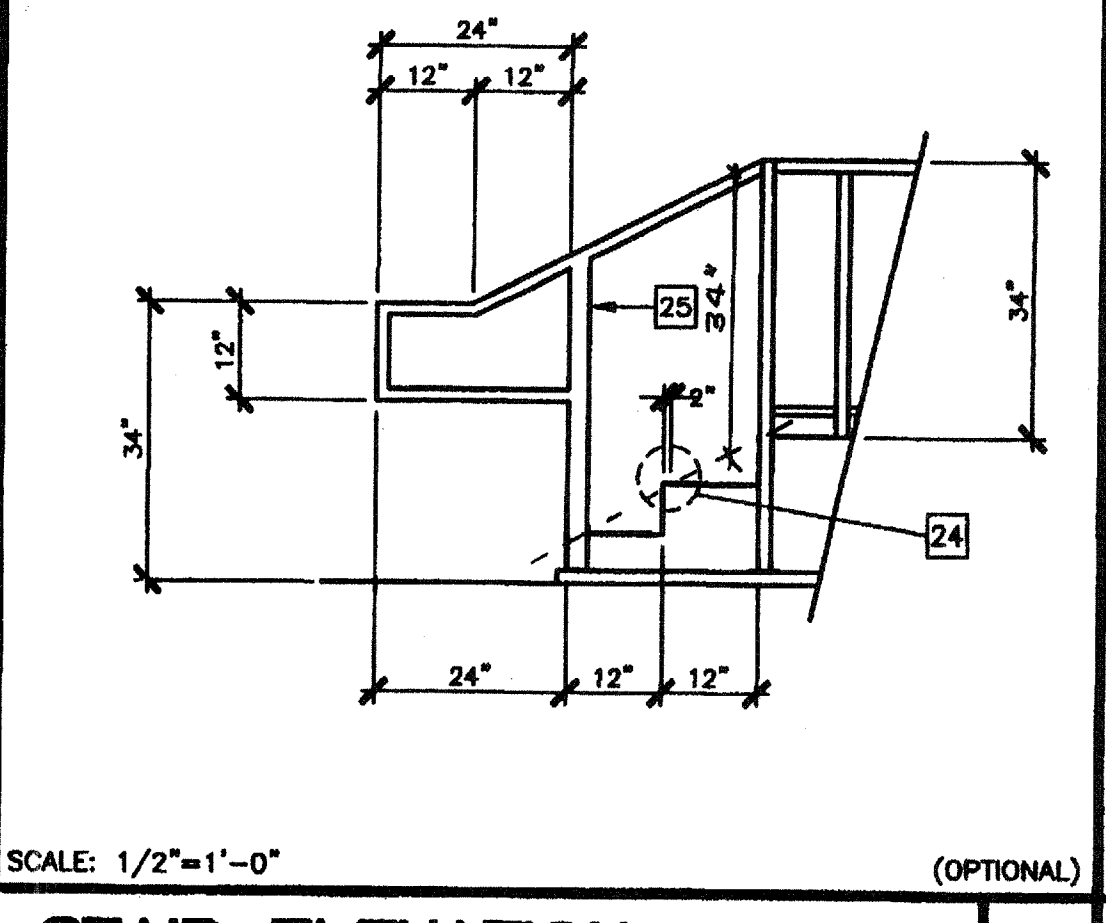
ADJUSTABLE LEG BASE PLATE 8



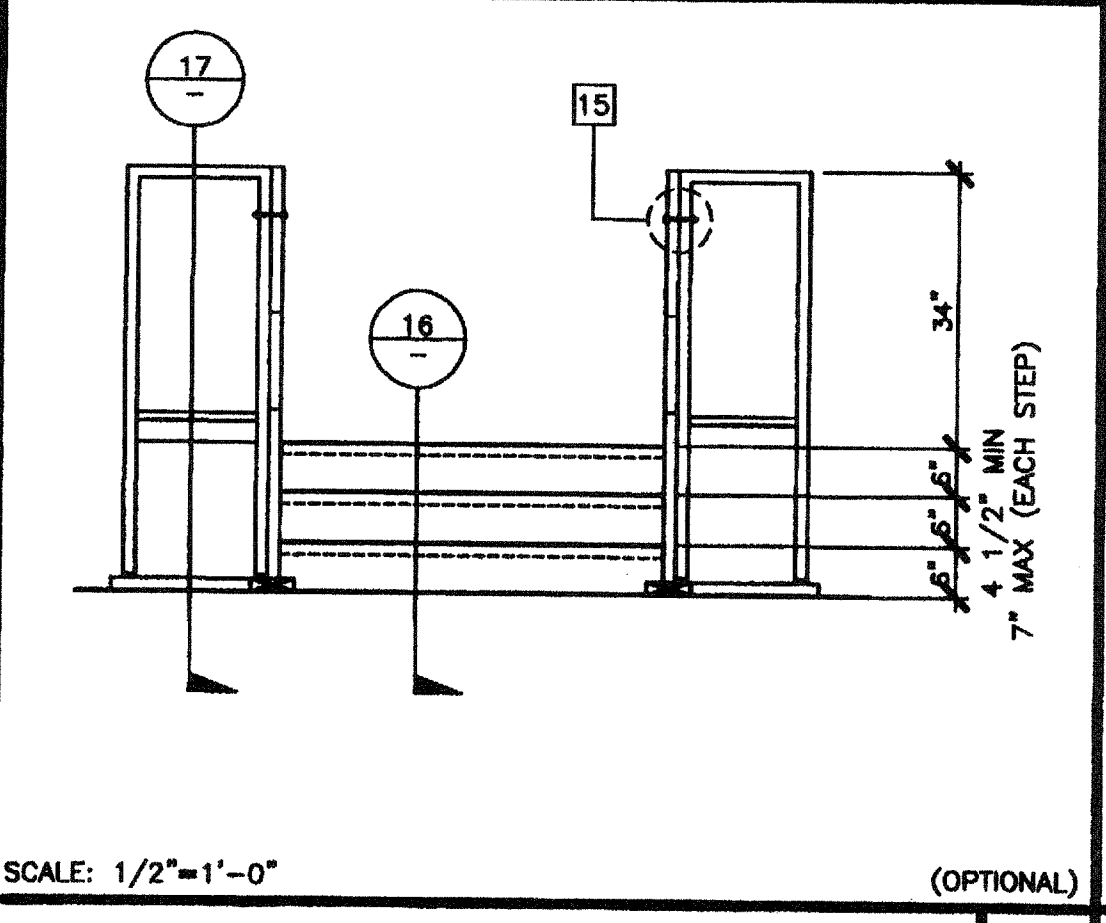
SECTION AT RAMP 1



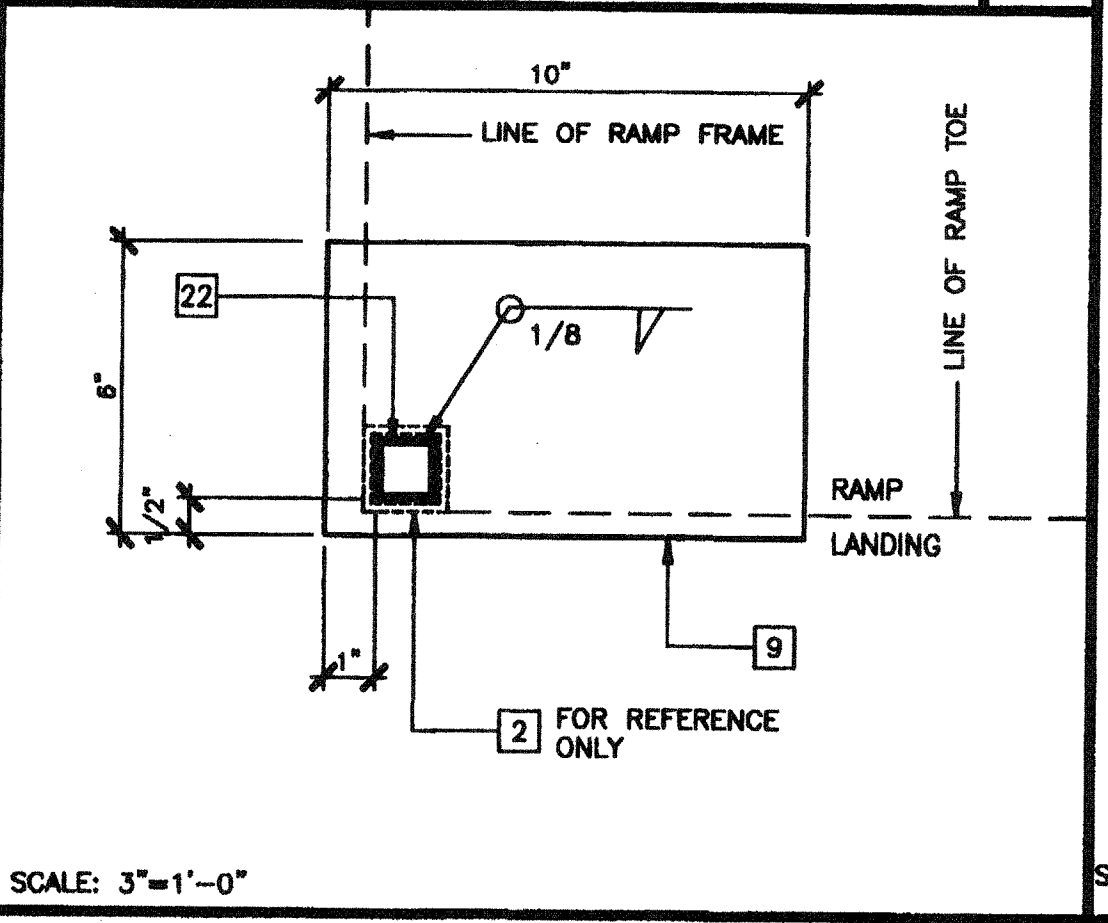
SECTION AT LANDING 2



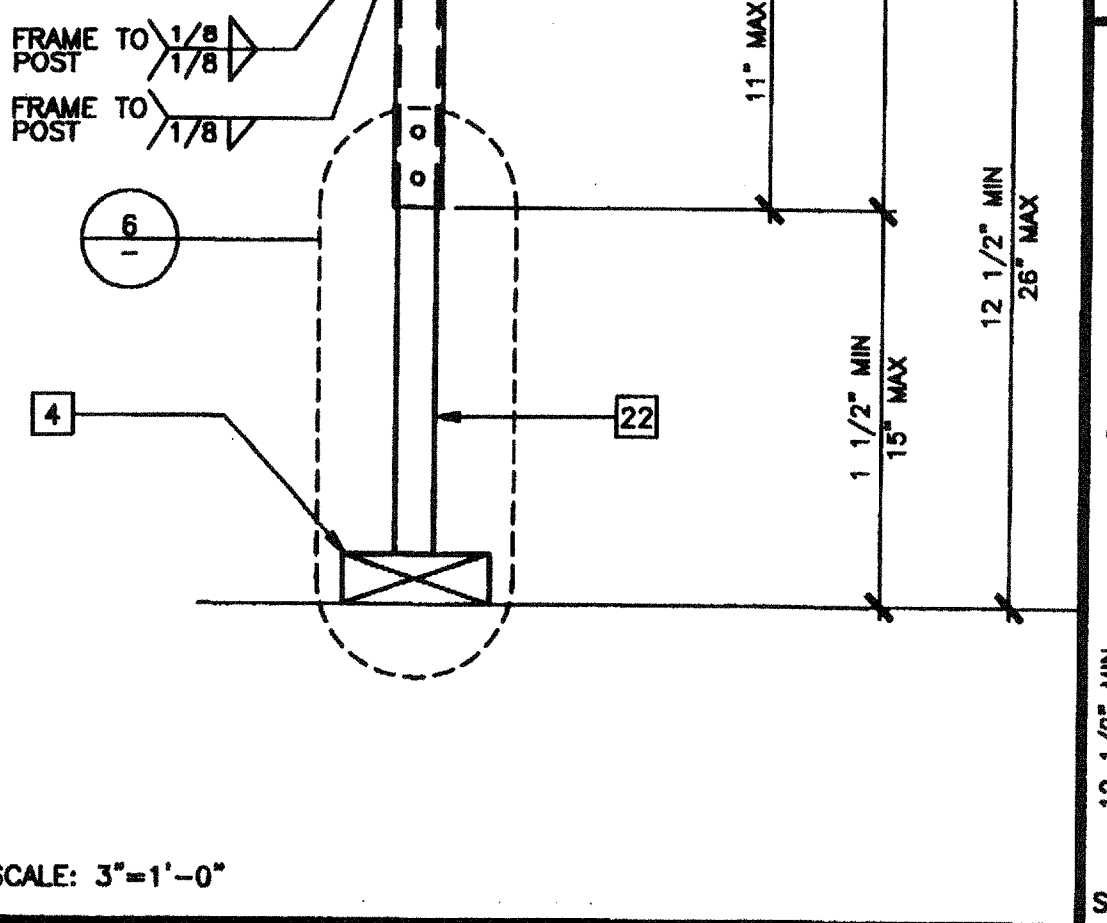
STAIR ELEVATION 17



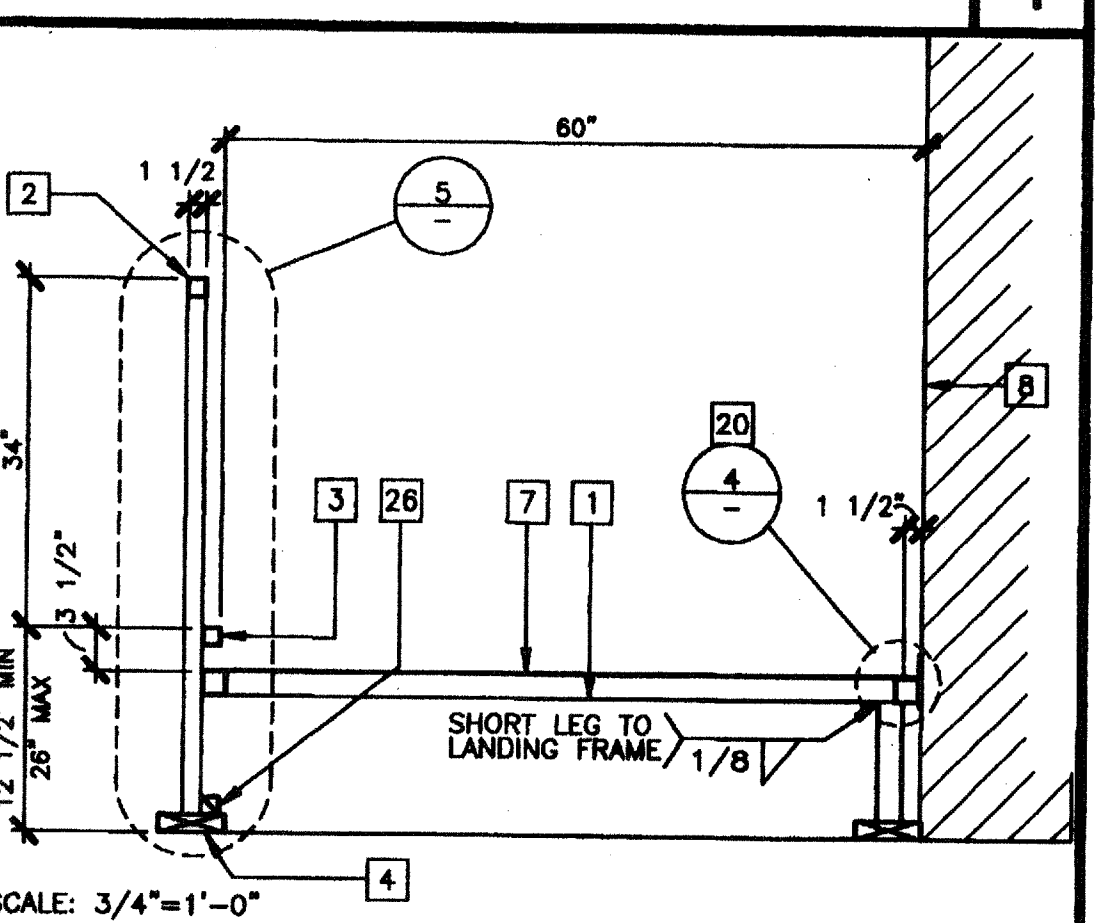
STAIR ELEVATION 13



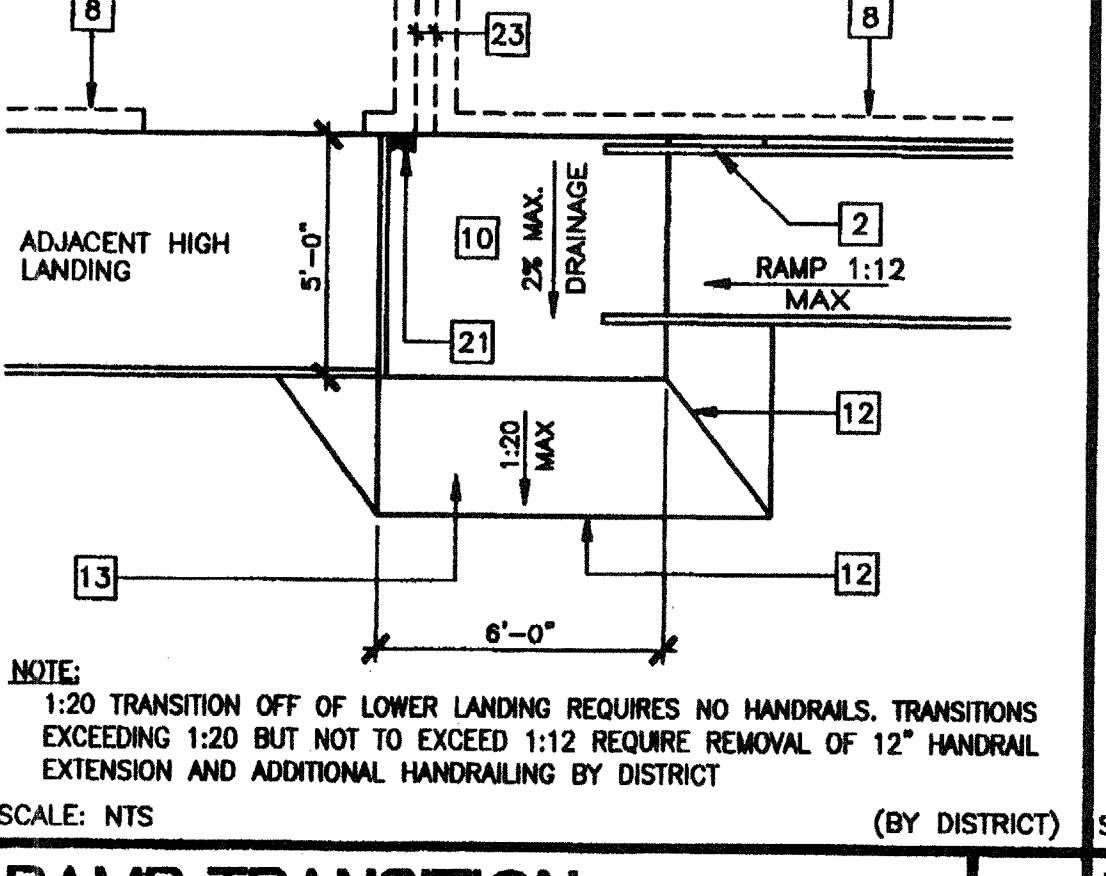
BASE PLATE AT RAMP TOE 9



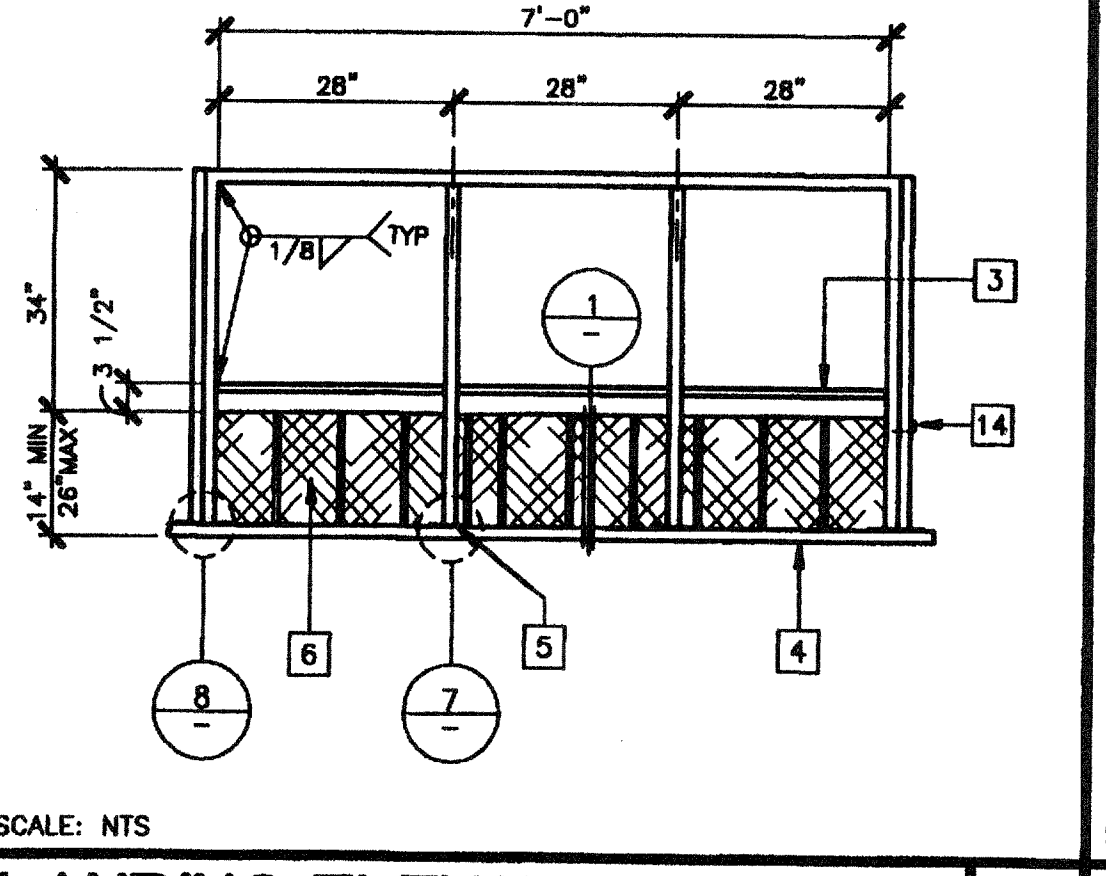
ADJUSTABLE LEG 5



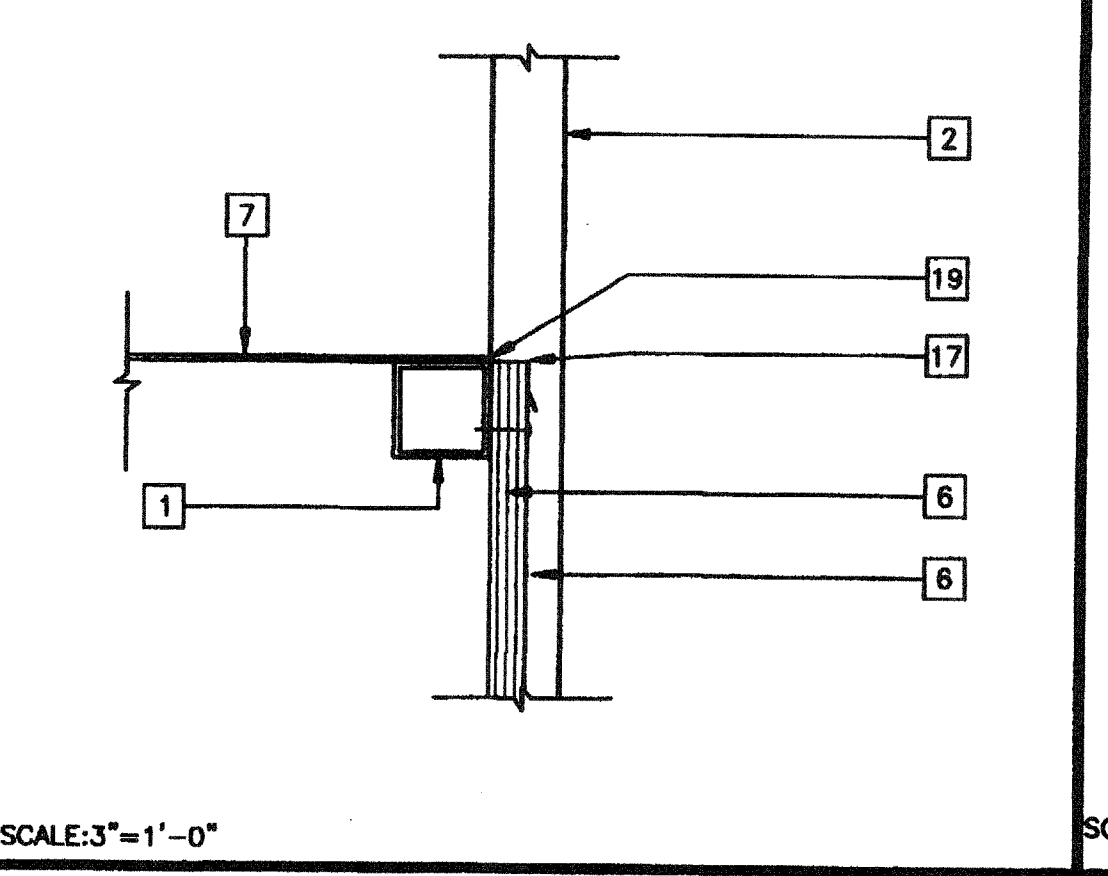
SECTION AT LANDING 2



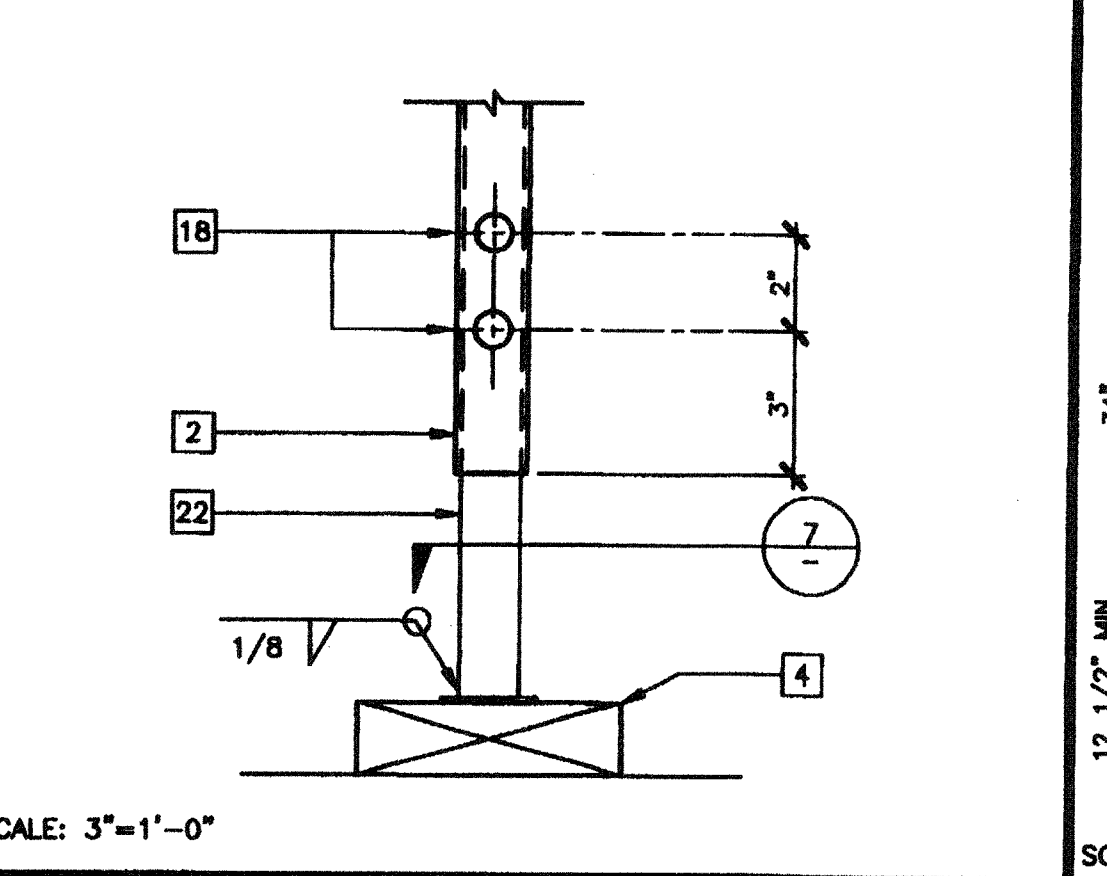
RAMP TRANSITION 18



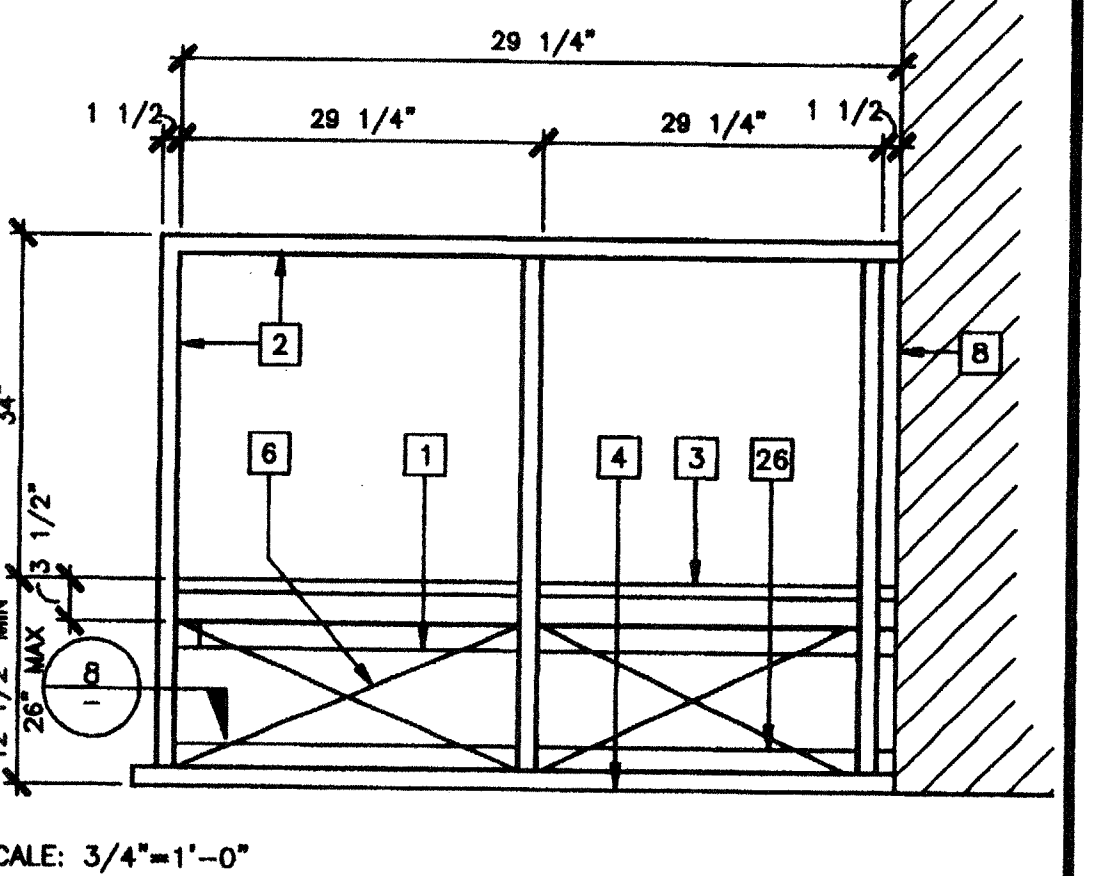
LANDING ELEVATION 14



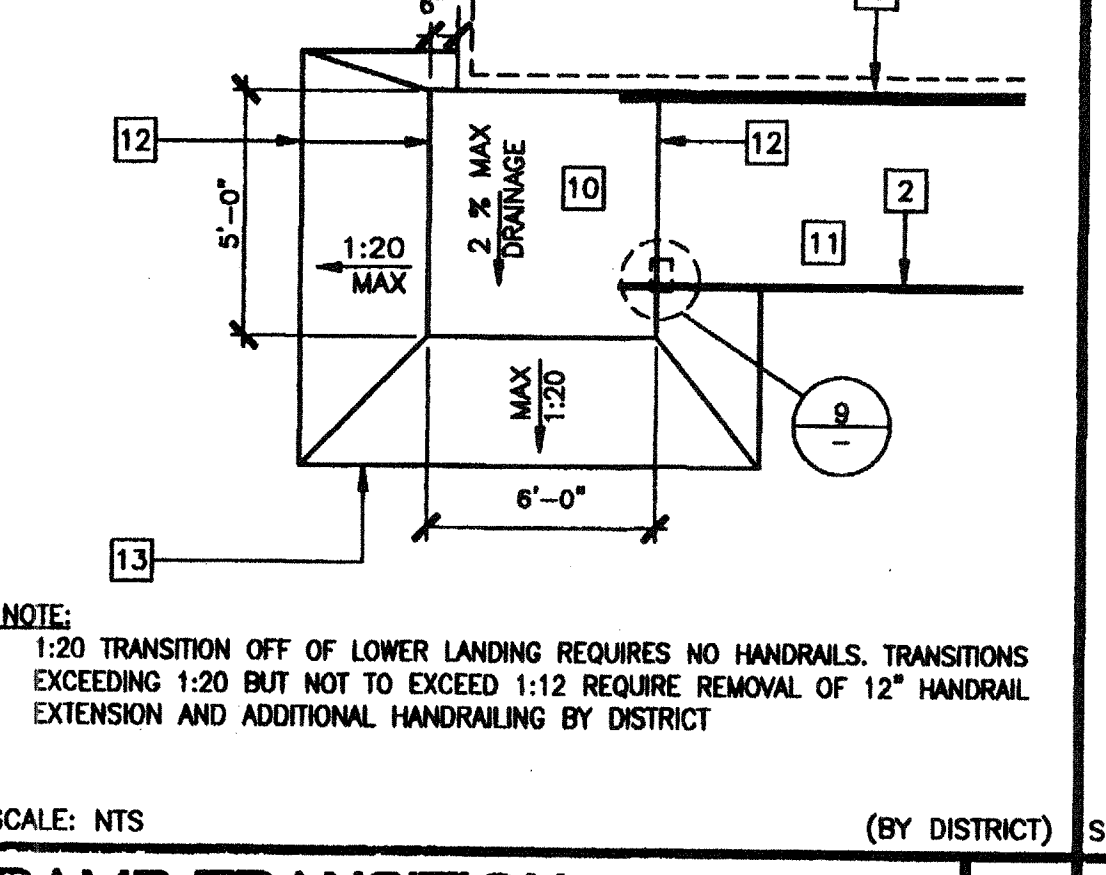
SKIRT FLASHING 10



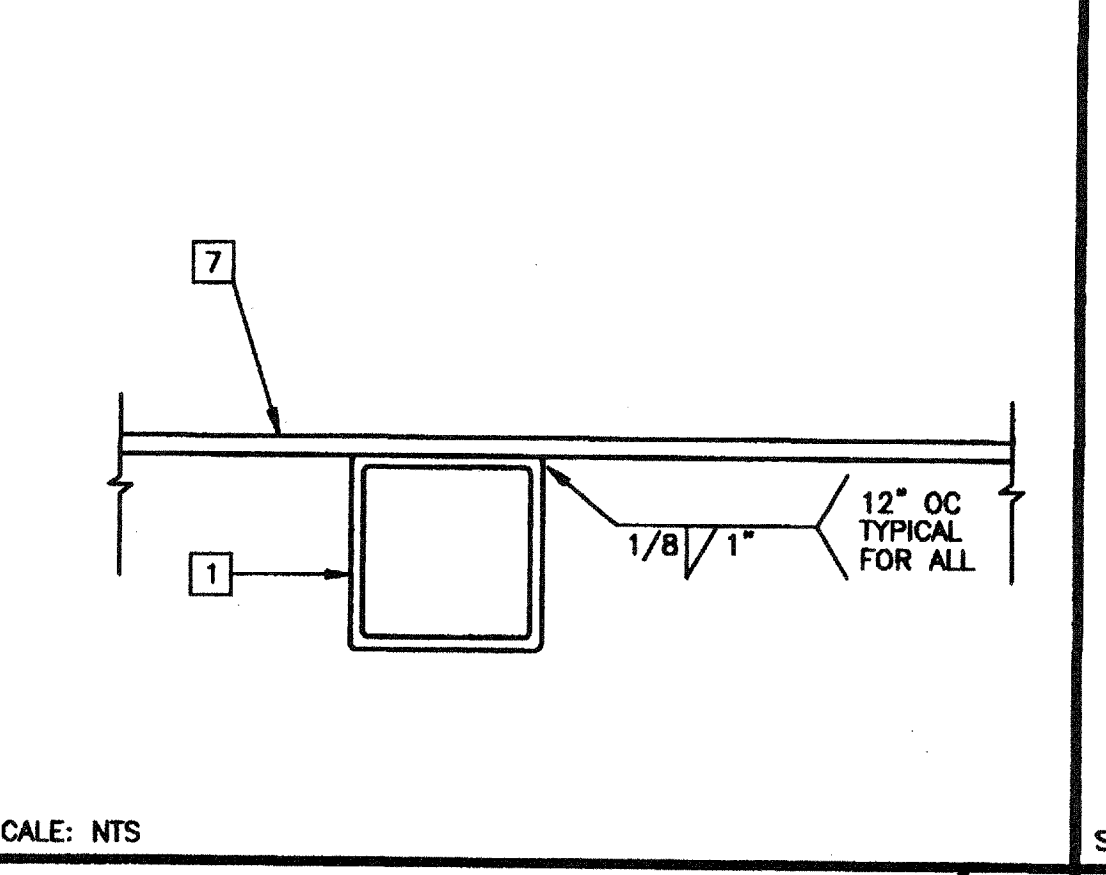
ADJUSTABLE LEG 6



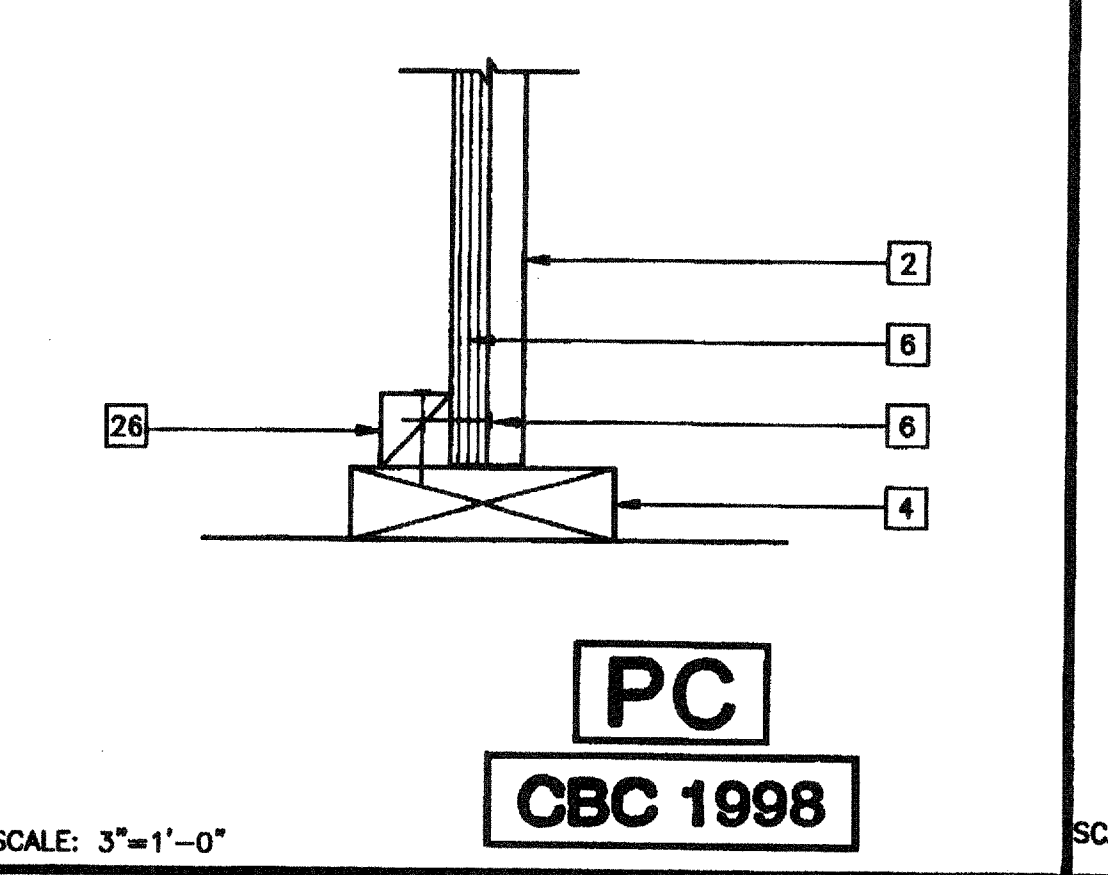
END ELEVATION 3



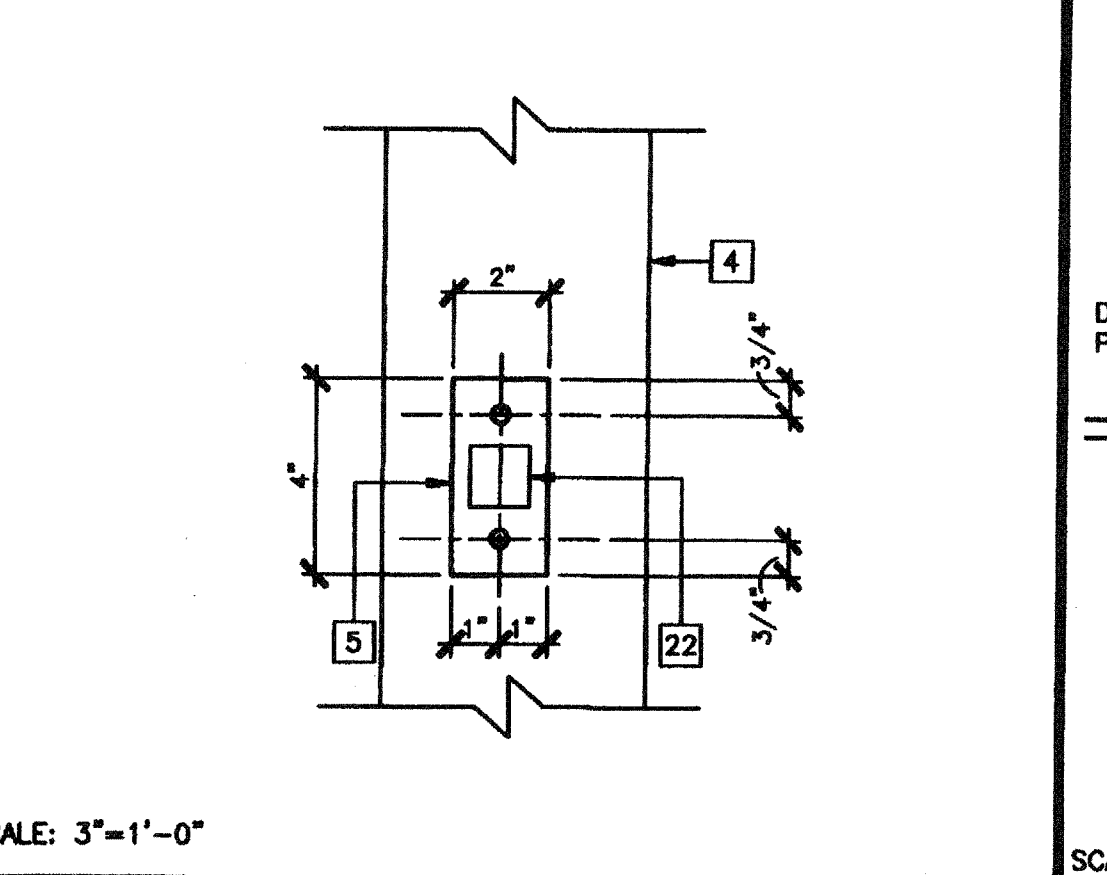
RAMP TRANSITION 19



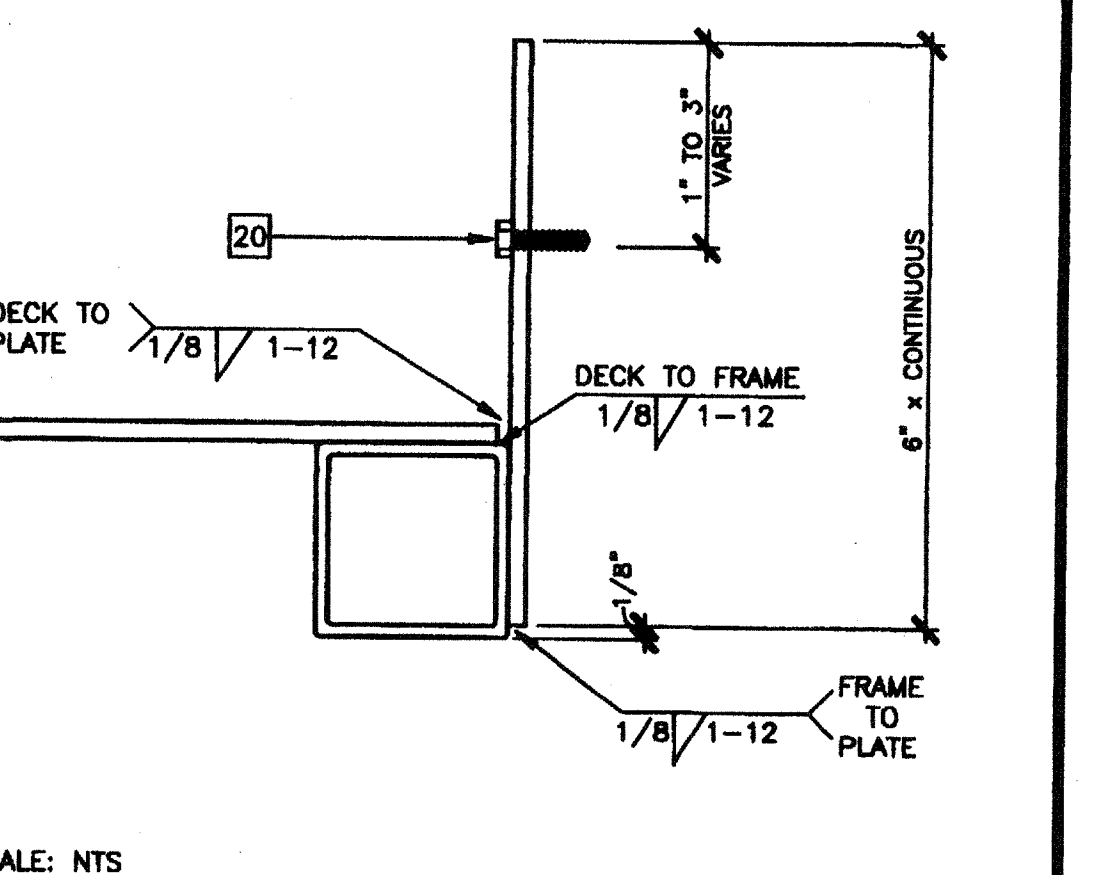
SECTION AT INTERIOR FRAME 15



SKIRT AT SILL PLATE 11



ADJUSTABLE LEG BASE PLATE 7



SECTION AT PLATE 4

- KEY NOTES**
- TS 2"x2"x14 GA
 - TS 1 1/2"x1 1/2"x14 GA (Fy = 39 KSI) ROUNDED OR BEVELED AT CORNERS
 - TS 1"x1"x16 GA WHEELCHAIR GUIDE
 - 2"x6" PRESSURE TREATED SILL PLATE
 - 2"x4"x12 GA BASE PLATE WITH 2-1/4"x1" LAGS
 - SKIRTING: PLYWOOD TO MATCH BUILDING SIDING. BLOCK ALL EDGES. ATTACH WITH 8d AT 6" OC EDGES AND 12" OC FIELD. AT EDGE CONNECTION TO TS. USE #14x2" TEK SCREWS AT 6" OC
 - 12GA METAL DECK: NON-SLIP SURFACE. DESIGN COEFFICIENT OF FRICTION GREATER THAN 0.6. MAINTAINABLE FOR 1 YR.
 - EXISTING BUILDING.
 - 6"x10"x12 GA BASE PLATE AT RAMP TOE.
 - LOWER LANDING BY DISTRICT
 - RAMP BY MODTECH
 - FLUSH TRANSITION
 - PAVE BY DISTRICT
 - 3"x1"x3"-0"x10 GA BENT PLATE
 - FASTEN POSTS WITH 3/8" DIA THRU BOLT, TYPICAL
 - RAMP LANDING, TYPICAL
 - 26 GA FLASHING
 - 3/8" DIAx2" LONG MB WITH NUT & WASHERS
 - CAULKING
 - 6"x10GA CONTINUOUS PLATE WITH #14x2" TEK SCREWS AT 9" OC INTO WOOD OR FOUNDATION BLOCKS OR #14x2" TEK SCREWS INTO METAL AT 9" OC
 - PROVIDE DIVERSION FOR WATER FROM DOWNSPOUT FOR THIS CONDITION. BY DISTRICT
 - TS 1 1/4"x1 1/4"x14 GA (Fy = 39 KSI)
 - 4" MINIMUM BUILDING SEPARATION
 - 2" SLIP RESISTANT WARNING STRIPES MAX 1" FROM EVERY STAIR NOSING. USE CONTRASTING COLOR.
 - TS 2 1/2"x1 1/2"x8 GA ASTM A500 GRADE A
 - 2"x2" NAILER WITH 16d AT 12" OC
 - PROVIDE ROUNDED OR BEVELED EDGES ON STAIR NOSING.

REVISIONS

1		
2		
3		
4		
5		

Electrical Engineer's Seal
Mechanical Engineer's Seal
Structural Engineer's Seal

Architect
PC
CBC 1998

MODTECH INC.
2830 BARRETT AVENUE
PERRIS, CALIF. 92572
PH (909) 943-4014
FAX (909) 940-0427

PROJECT NUMBER: 4134, 4153, 4173, 4203, © MODTECH, INC. 2001
4207, 4215, 4250
4284, 4302, 4350
4304, 4347, 4373, 4422
4506

IDENTIFICATION STAMP
DIV OF THE STATE ARCHITECT
APPROX 116574
AC 116574
DATE APR 18 2002
DRAWN BY: M. ANDERSEN
DATE: APR 15 2002
CHECKED BY: 4012-121
DATE: 04-16-02
MODTECH Index No.
R1.02

RAMP/LANDING DETAILS

PROJECT NO. 4134 4207
FILE PATH: 2440-4134.DWG
PC-04-101268