

# ELECTRICAL PANEL SCHEDULE

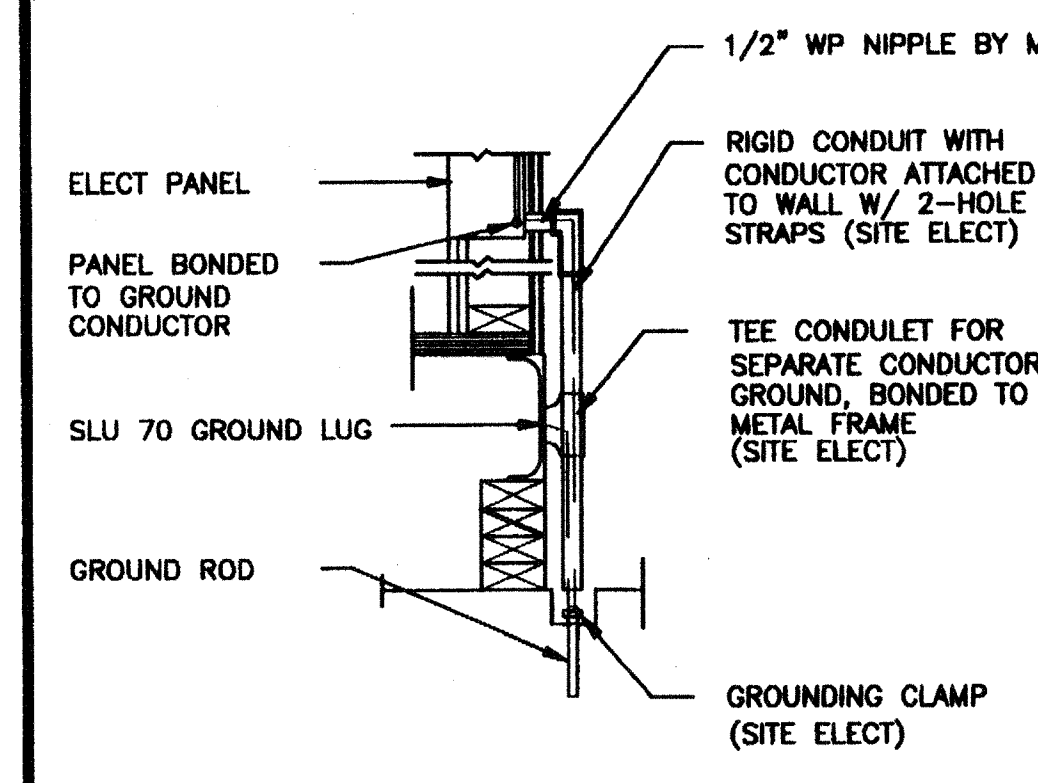
MAIN: 100 AMP 12 POLE		PANEL: A		FEED: REAR	
		LOCATION: REAR/INTERIOR		MOUNTING: FLUSH	
LOAD	WATTS		BREAKER		LOAD
	A#	B#	Amps	P	
RECEPTACLE	720	20	1	1	HVAC (3 1/2T)
RECEPTACLE/CLOCK	720	20	1	3	HVAC (3 1/2T)
				5	HEAT STRIPS (5KW)
				7	HEAT STRIPS (5KW)
INT/EXT LIGHTS	900	20	1	9	
INT. LIGHTS		840	20	11	FIRE ALARM (DEDICATED)
WATTS/PHASE	A = 7480		1620	1560	B = 7480
TOTAL	15385	WATTS	65	AMPS	120/240 VOLTS
					SINGLE # THREE WIRE

# GENERAL GROUNDING NOTES

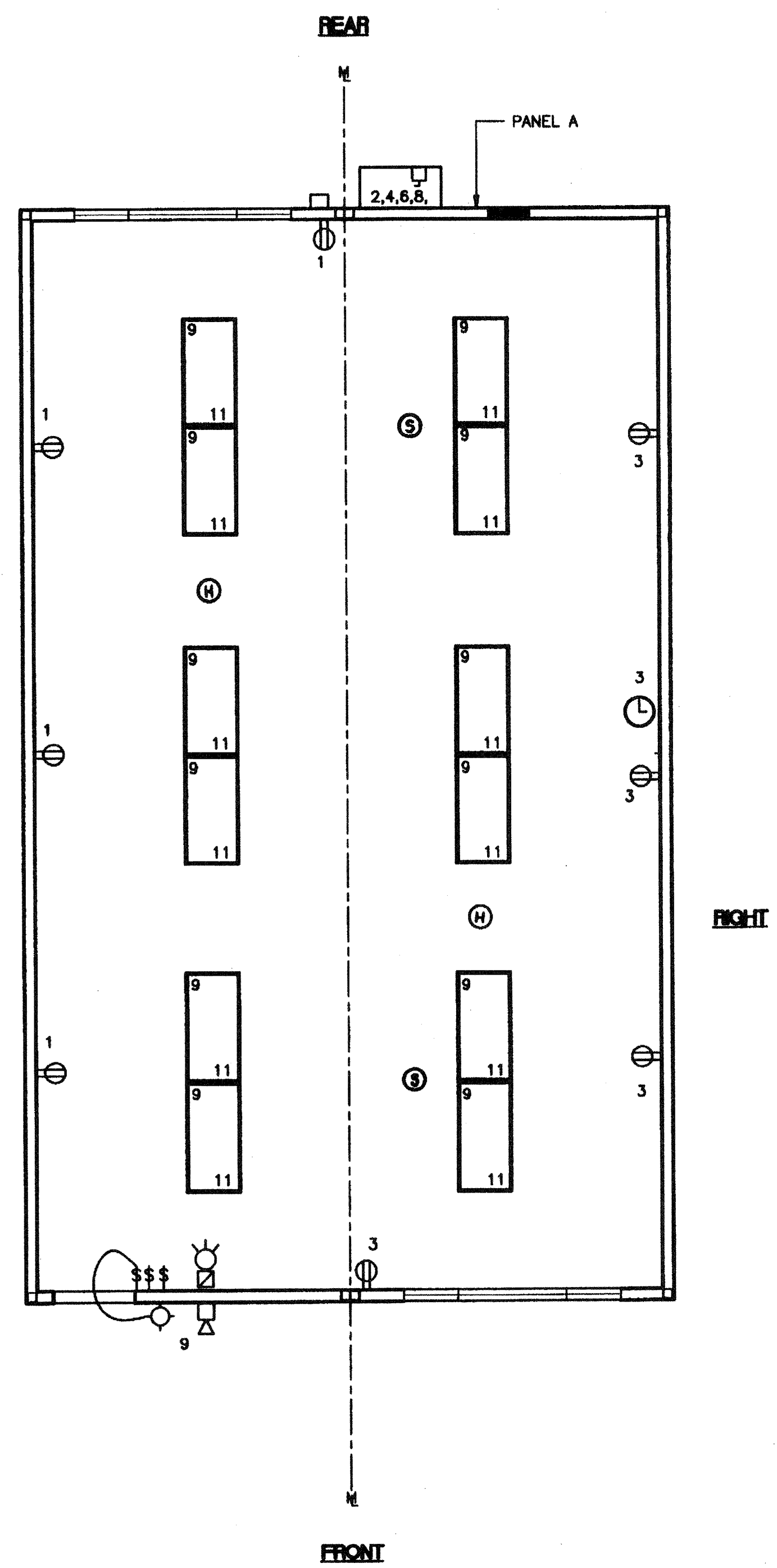
- EACH BUILDING SHALL BE SEPARATELY GROUNDING WITH A 3/4" RD. X 8' COPPERCLAD STEEL GROUND ROD. WHERE ROCK BOTTOM IS ENCOUNTERED, ROD SHALL BE DRIVEN AT AN ANGLE NOT TO EXCEED 45 DEGREE'S FROM THE VERTICAL OR SHALL BE BURIED IN A TRENCH THAT IS AT LEAST 30" DEEP (BY SITE ELECTRICAL)
- TESTING: TEST FOR RESISTANCE TO GROUND. IF RESISTANCE EXCEEDS 25 OHMS, INSTALL ADDITIONAL GROUND RODS SEPARATED AT LEAST 6'-0" UNTIL RESISTANCE IS REDUCED TO 25 OHMS OR LESS. (BY SITE ELECTRICAL)
- APPROVAL OF THIS PLAN DOES NOT CONSTITUTE APPROVAL OF THIS FIRE ALARM FOR ALL SITES. THE FIRE ALARM SYSTEM AND/OR COMPONENTS MAYBE REQUIRED TO BE CHANGED DUE TO SITE LOCATION, EXISTING CONDITIONS OR INCOMPATIBLE COMPONENTS.
- GROUND MG TEST SHALL BE DONE IN THE PRESENCE OF THE PROJECT INSPECTOR. ALL GROUNDING SHALL BE IN ACCORDANCE WITH CEC ARTICLE 250.

# ELECTRICAL LEGEND

- 2'x4' 4 TUBE FLUORESCENT LIGHT FIXTURE
- EXTERIOR LIGHT FIXTURE AT +93" AFF
- SWITCH AT +48" AFF
- 3WAY SWITCH AT +48" AFF UON
- DUPLEX WALL RECEPTACLE 15A 125V 3-WIRE AT +18" AFF UON
- HVAC UNIT (HV)
- 4SD J-BOX FOR FIRE ALARM PULL STATION AT +48" AFF, TO 3/4" CO TO PULLSTRING
- 4SD J-BOX FOR FIRE ALARM STROBE AT +80" AFF 3/4" CO TO PULLSTRING
- 4SD J-BOX FOR FIRE ALARM HORN AT +96" AFF 3/4" CO TO PULLSTRING
- WEATHER PROOF GUTTER BOX (6"x6"x4") AT +18" AFF RECEIVE 3/4" CO FROM FA DEVICE, PULLSTRING
- ELECTRICAL PANEL AT +80" AFF TO CENTERLINE 1 1/4" POWER NIPPLE POC, GND JUMPER BY SITE ELECT
- CLOCK AT +90" AFF
- 4SD J BOX FOR HEAT DETECTOR (ATTIC) \*
- 4SD J BOX FOR SMOKE DETECTOR (ATTIC) \*

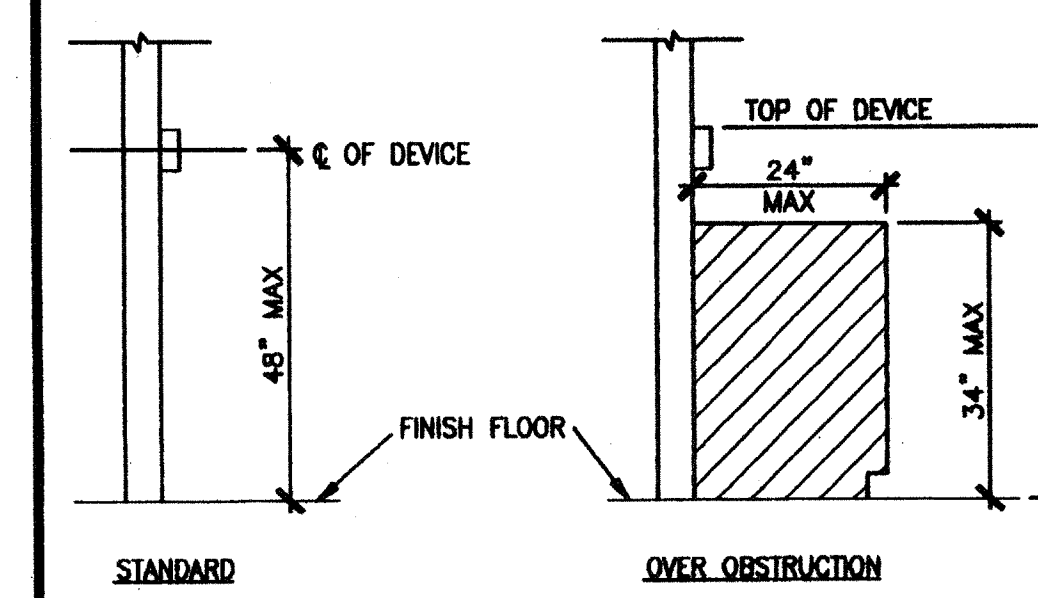


## TYP GROUNDING DETAIL 1



**ELECTRICAL PLAN A** (24'x40')  
SCALE: 1/4" = 1'-0"

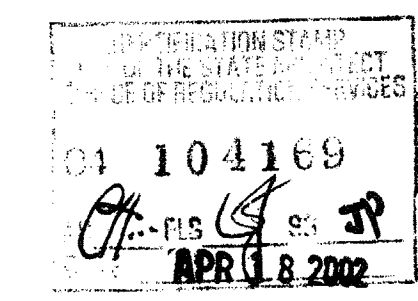
## GROUND JUMPER AT MOD LINE 2



## DEVICE MOUNTING 3

## NOTES

- SCHOOL EQUIPMENT ANCHORAGE  
THE FOLLOWING IS FOR THE ARCHITECTS INFORMATION ONLY:  
THE SEISMIC ANCHORAGE OF ELECTRICAL EQUIPMENT SHALL CONFORM TO CCR TITLE 24, SECTION 1632A AND TABLE 16A-0. ANCHORAGE DETAILS FOR ROOF/FLOOR MOUNTED EQUIPMENT WEIGHING LESS THAN 400 LBS & HUNG EQUIPMENT WEIGHING LESS THAN 20 LBS MAY BE OMITTED FROM THE PLANS.  
  
ALL ELECTRICAL EQUIPMENT SHALL BE BRACED OR ANCHORED TO RESIST A HORIZONTAL FORCE ACTING IN ANY DIRECTION USING THE FOLLOWING CRITERIA:  
  
EQUIPMENT ON GRADE      20% OF OPERATING WEIGHT  
EQUIPMENT ON STRUCTURE      30% OF OPERATING WEIGHT  
  
FOR FLEXIBLY MOUNTED EQUIPMENT USE 4 TIMES THE ABOVE VALUES, AND FOR SIMULTANEOUS VERTICAL FORCE USE 1/3 TIMES THE HORIZONTAL FORCE.  
  
THE ABOVE VALUES ARE FOR AN IMPORTANCE FACTOR, I = 1.0 AND SEISMIC ZONE, Z = 4  
  
WHERE ANCHORAGE DETAILS ARE NOT SHOWN ON THE DRAWINGS THE FIELD INSTALLATION SHALL BE SUBJECT TO THE APPROVAL OF THE ARCHITECT AND THE FIELD ENGINEER OF THE OFFICE OF THE STATE ARCHITECT.
- SMOKE AND HEAT DETECTORS SHOWN ARE FOR OPTIONAL AUTOMATIC DETECTION. IF ELECTED AS AN OPTION MODTECH WILL PROVIDE 4SD BOXES AND 3/4" CO MOUNTED ON UNDERSIDE OF ROOF PURLINS. DEVICES PROVIDED AND INSTALLED BY OTHERS



CBC 1998

STKP-62

REVISIONS	Electrical Engineer's Seal	Mechanical Engineer's Seal	Structural Engineer's Seal	Architect's Seal	Identification Stamp	MODTECH INC.	PROJECT NUMBER	DRAWN BY

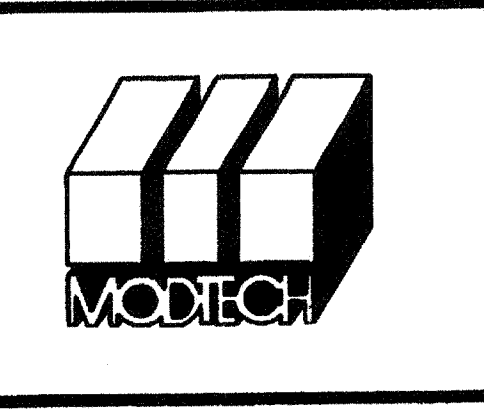
Electrical Engineer's Seal

Mechanical Engineer's Seal

Structural Engineer's Seal

Architect's Seal

IDENTIFICATION STAMP  
DIV. OF THE STATE ARCHITECT  
OFFICE OF REGULATION SERVICES  
PC-04  
101268  
AC 21  
DATE SEP 17 1999



**MODTECH INC.**  
2830 BARRETT AVENUE  
PERRIS, CALIF. 92572  
PH (909) 943-4014  
FAX (909) 940-0427

PROJECT NUMBER: 4134, 4153, 4173, 4203 © MODTECH, INC. 2001  
4207, 4215, 4250  
4284, 4302, 4350  
4304, 4347, 4373, 4422  
4506

DRAWN BY: M. ANDERSEN  
DATE: APR 15 2002  
CHECKED BY: 4012-121  
DATE: 04-16-02  
MODTECH Index No.  
**E1.01A**

**ELECTRICAL PLAN** 24'x40' STANDARD

PROJECT NO. 4134-101268