

KEY NOTES

- 1 TYPICAL EXTERIOR SIDING (SEE FINISH SCHED.)
- 2 EXTERIOR LIGHT FIXTURE (SEE SPECIFICATIONS)
- 3 TOP OF SKIRTING
- 4 RAMP AND LANDING SEE SHT. R-1
- 5 HVAC UNIT (HV)
- 6 DOWNSPOUT (TYP.) FOR (2). FASTEN TO BLDG. TYP. 3 PLACES (SEE 8/A6.1)
- 7 CONTINUOUS GUTTER WITH DOWNSPOUT (LOCATION OF DOWNSPOUT SHOWN ON ROOF PLAN)
- 8 SPLASH BLOCK (BY OTHERS)
- 9 FINISH FLOOR LINE
- 10 BOTTOM FLANGE OF FLOOR BEAM
- 11 ROOF HEADER
- 12 TOP OF COLUMN
- 13 FINISH GRADE
- 14 ROOF BEAM (STR)
- 15 COLUMN (STR)
- 16 ELECTRICAL STUB-OUT (EL)
- 17 GROUND STUB-OUT (EL)
- 18 FIRE ALARM HORN (EL)
- 19 NEMA GUTTER BOX (EL)
- 20 RIDGE
- 21 FOUNDATION VENT (SEE FOUNDATION PLAN)

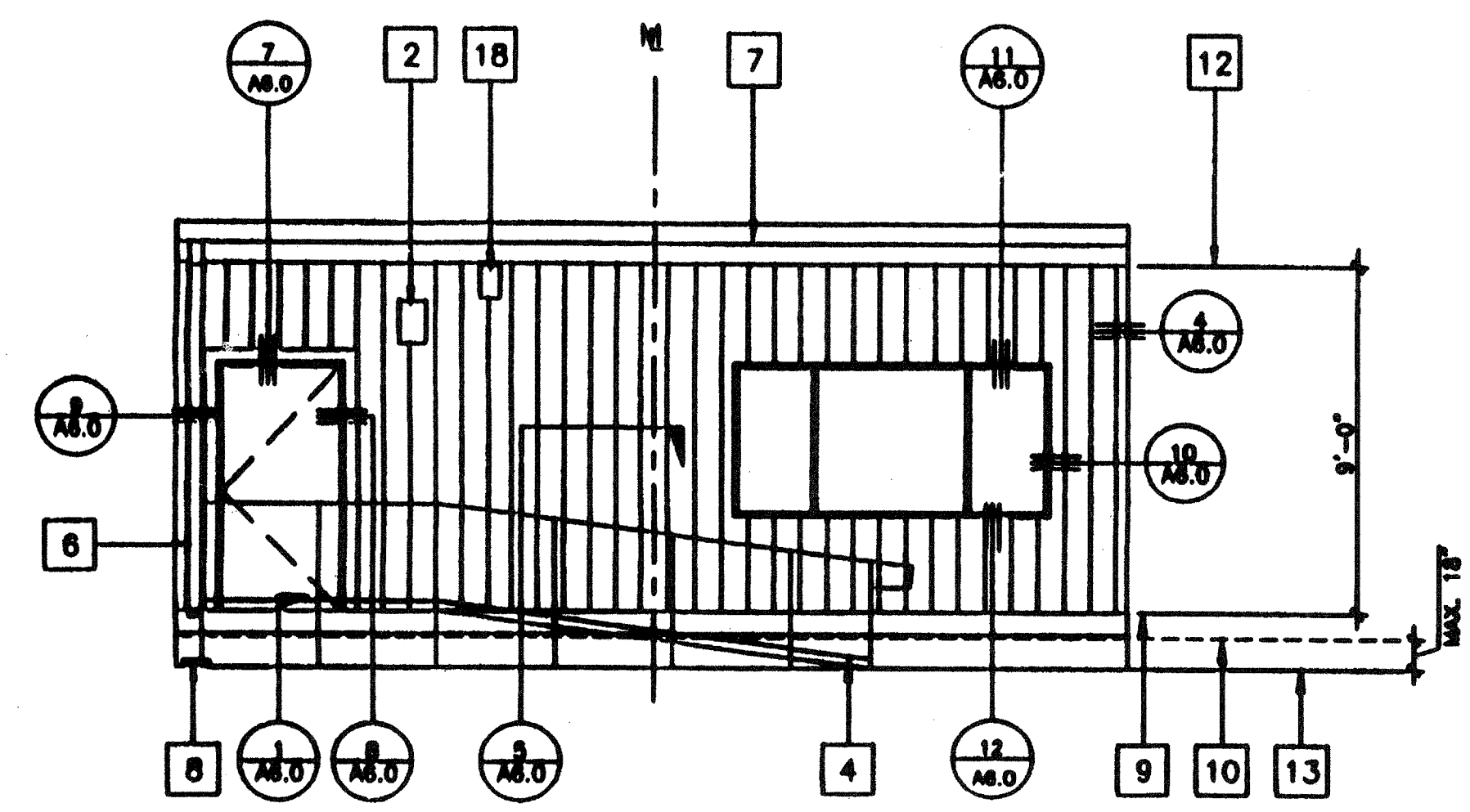
NOTES

IDENTIFICATION STAMP
DIV. OF THE STATE ARCHITECT
OFFICE OF REGULATION SERVICES
04 100596
AC 11 FLS SEP 23 2015
DATE AUG 10 1996

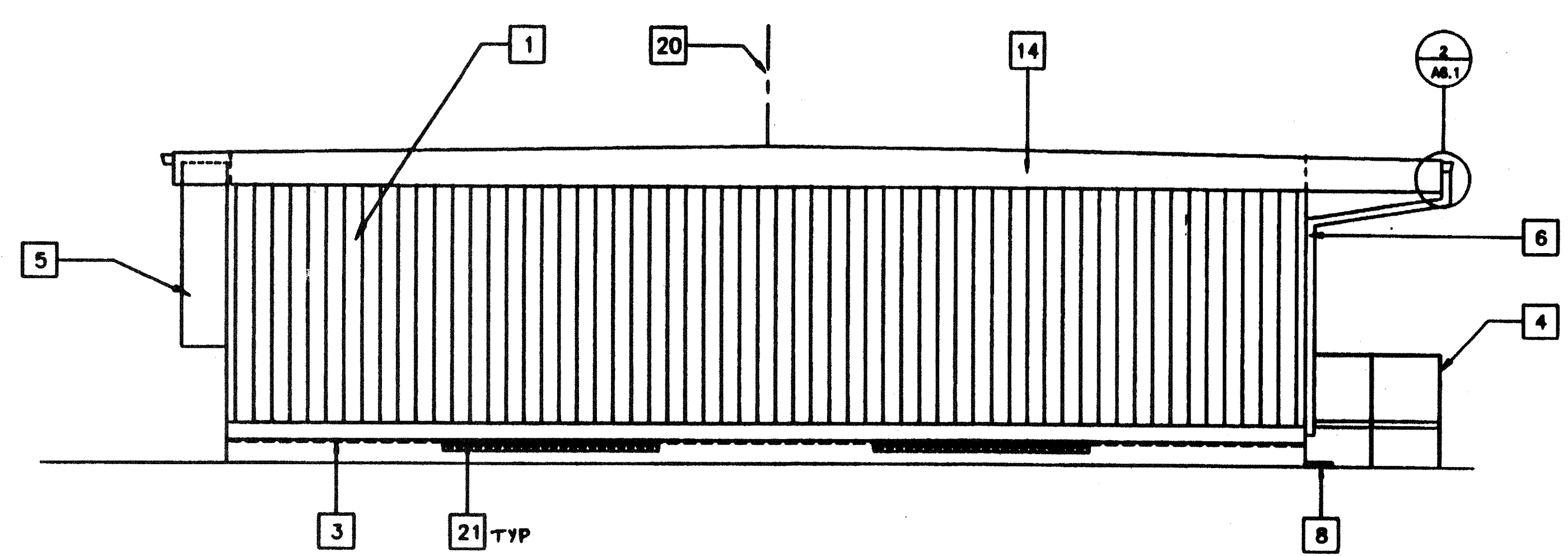
IDENTIFICATION STAMP
DIV. OF THE STATE ARCHITECT
ART03 110574
AC 11 FLS SEP 23 2015
DATE SEP 23 2015

STKP-37D

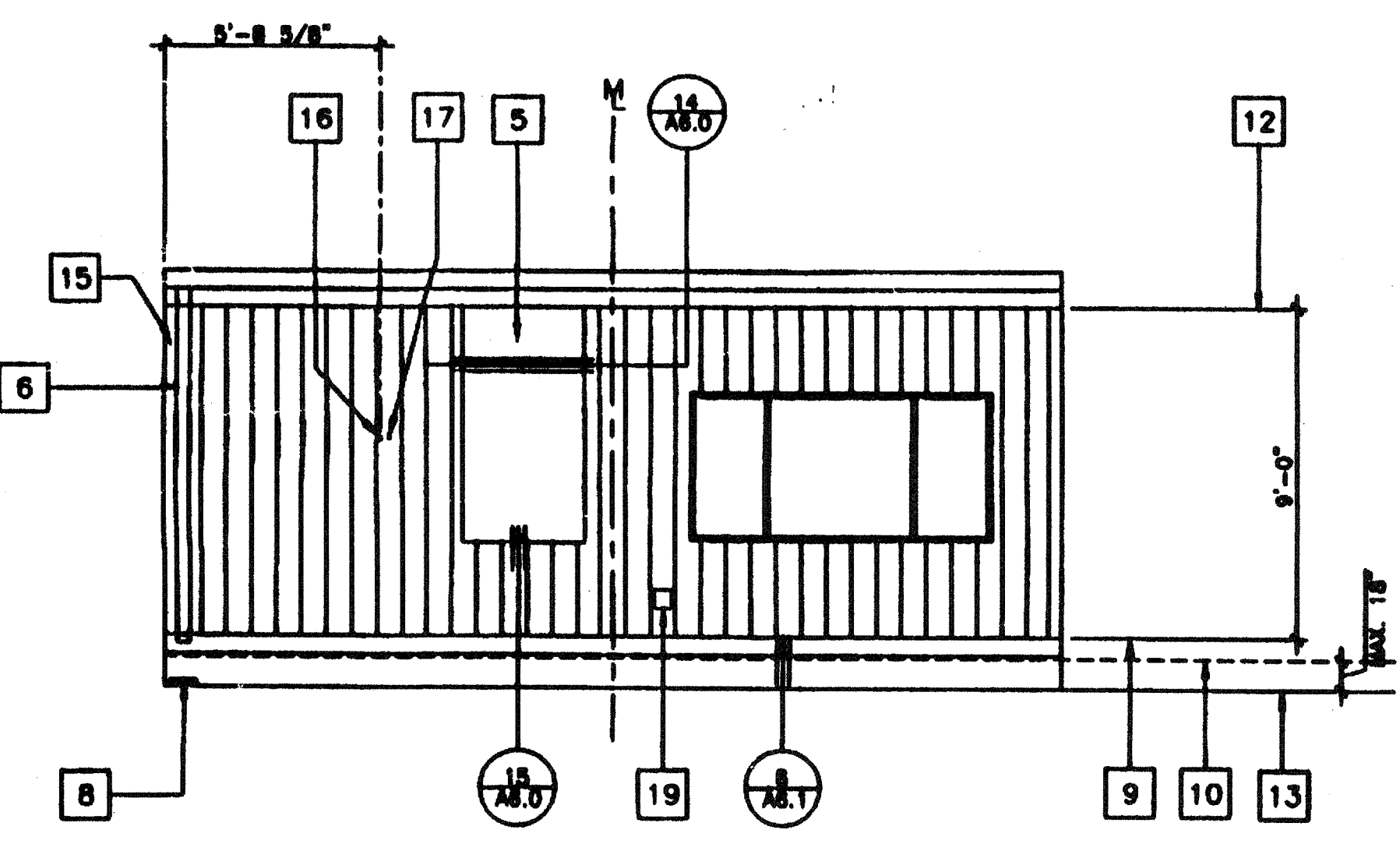
drawn by: 2852
checked by: 2854
date:
project no:
MODTECH logo no.



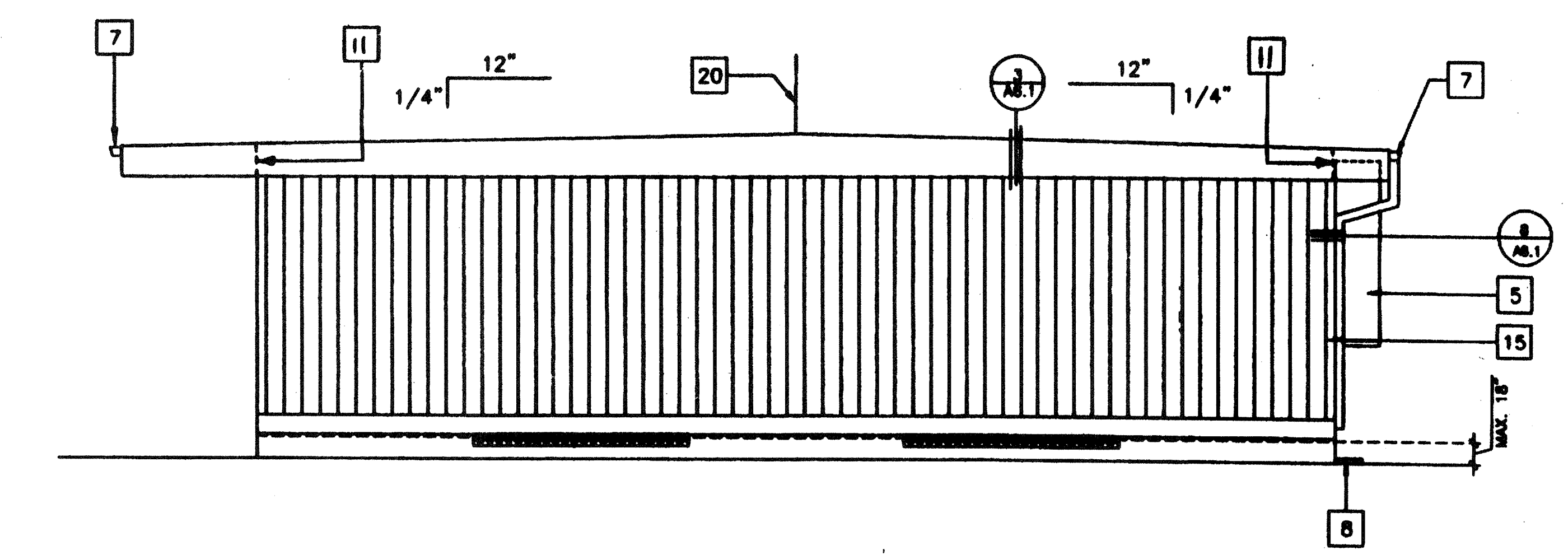
1 FRONT ELEVATION
SCALE 1/4"=1'-0"



2 LEFT SIDE ELEVATION
SCALE 1/4"=1'-0"



3 REAR ELEVATION
SCALE 1/4"=1'-0"



4 RIGHT SIDE ELEVATION
SCALE 1/4"=1'-0"

24' X 40' (DUAL SLOPE)

| REVISIONS | Electrical Engineer's Seal | Mechanical Engineer's Seal | Structural Engineer's Seal | Architect's Seal | Division of the State Architect | PROJECT NUMBER: | © MODTECH, INC. 1997 | drawn by: |
|-----------|----------------------------|----------------------------|----------------------------|------------------|---------------------------------|-----------------|----------------------|-----------|
| | | | | | | | 4012-083 | 2852 |
| | | | | | | | | 2854 |
| | | | | | | | | |
| | | | | | | | | |

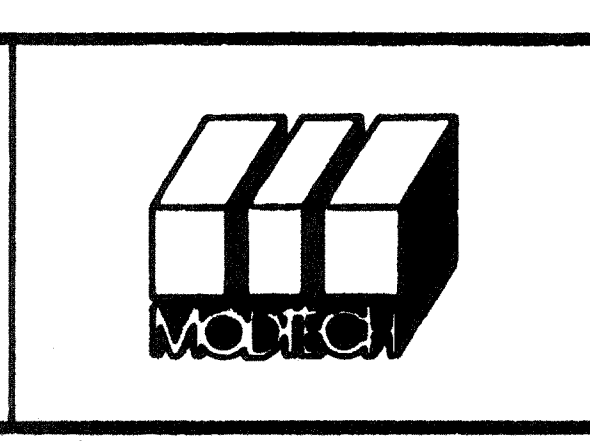
Electrical Engineer's Seal

Mechanical Engineer's Seal

Structural Engineer's Seal

Architect's Seal
LICENSED ARCHITECT
GEORGE C. EDWARDS
NO. C 255
REL. 9-30-99
STATE OF CALIFORNIA

Division of the State Architect
IDENTIFICATION STAMP
DIV. OF THE STATE ARCHITECT
OFFICE OF REGULATION SERVICES
PC-266
AC 11 FLS SEP 23 2015
DATE JUN 25 1997



MODTECH INC.
2830 BARRETT AVENUE
PERRIS, CALIF. 92572
PH (909) 943-4014
FAX (909) 940-0427

PROJECT NUMBER:

© MODTECH, INC. 1997
4012-083

drawn by: 2852
checked by: 2854
date:
project no:
MODTECH logo no.

EXTERIOR ELEVATIONS

A3.0