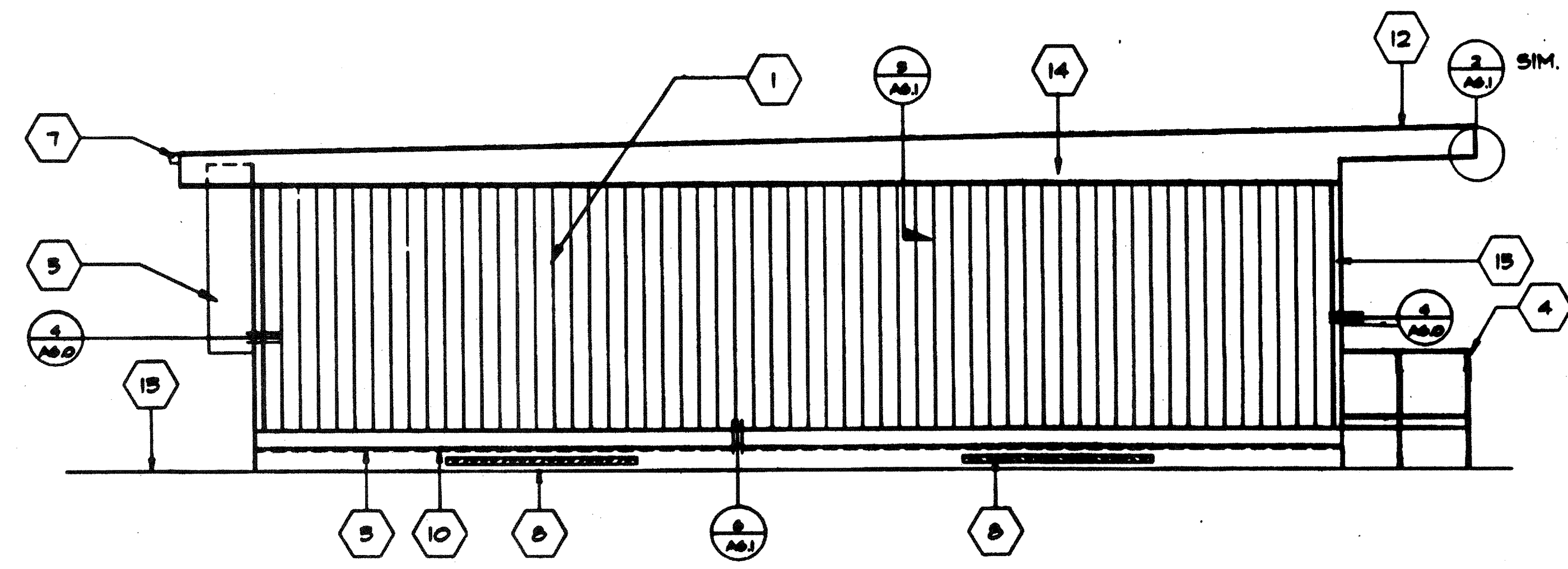


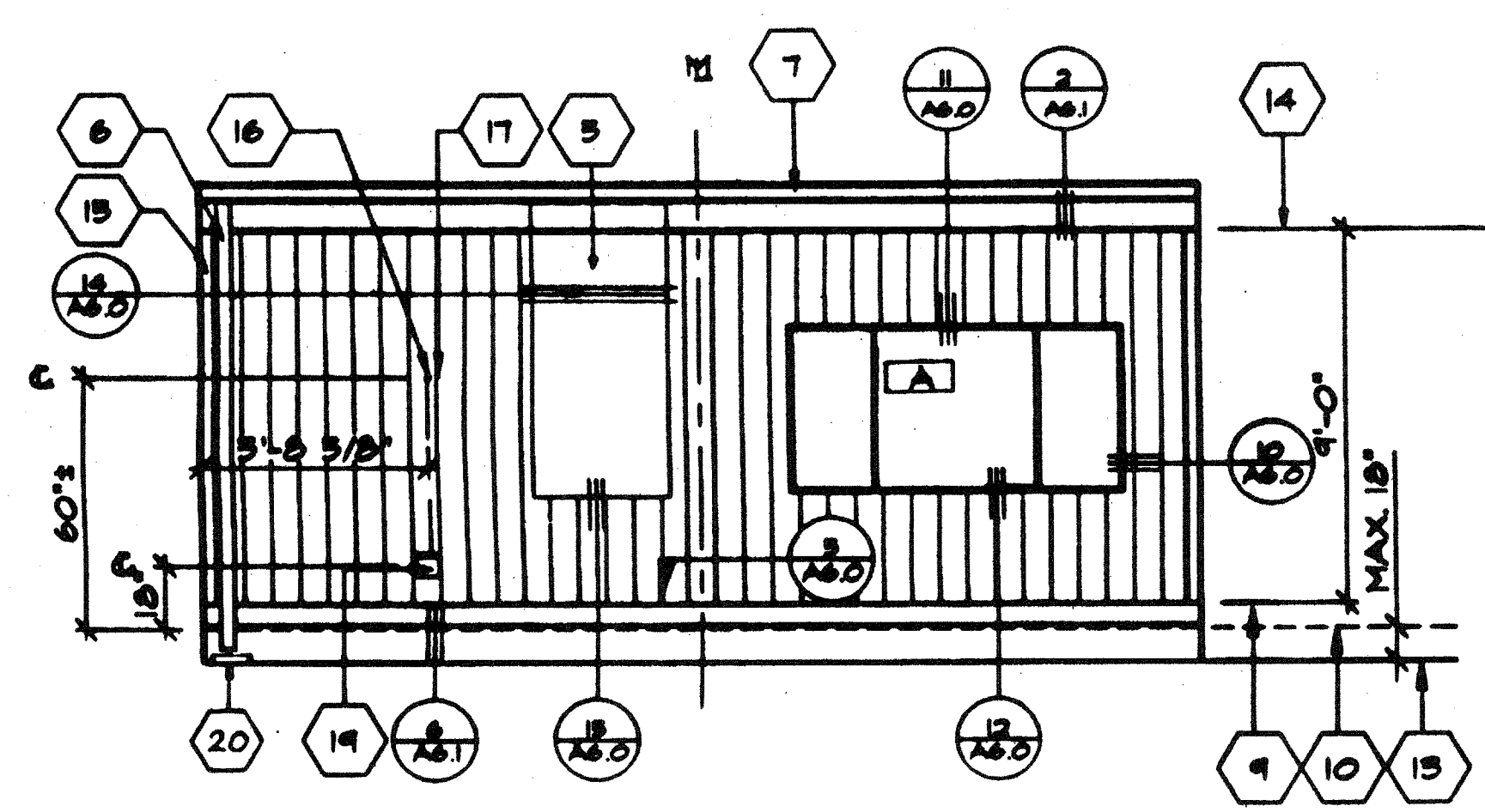
① FRONT ELEVATION

SCALE 1/4"=1'-0"



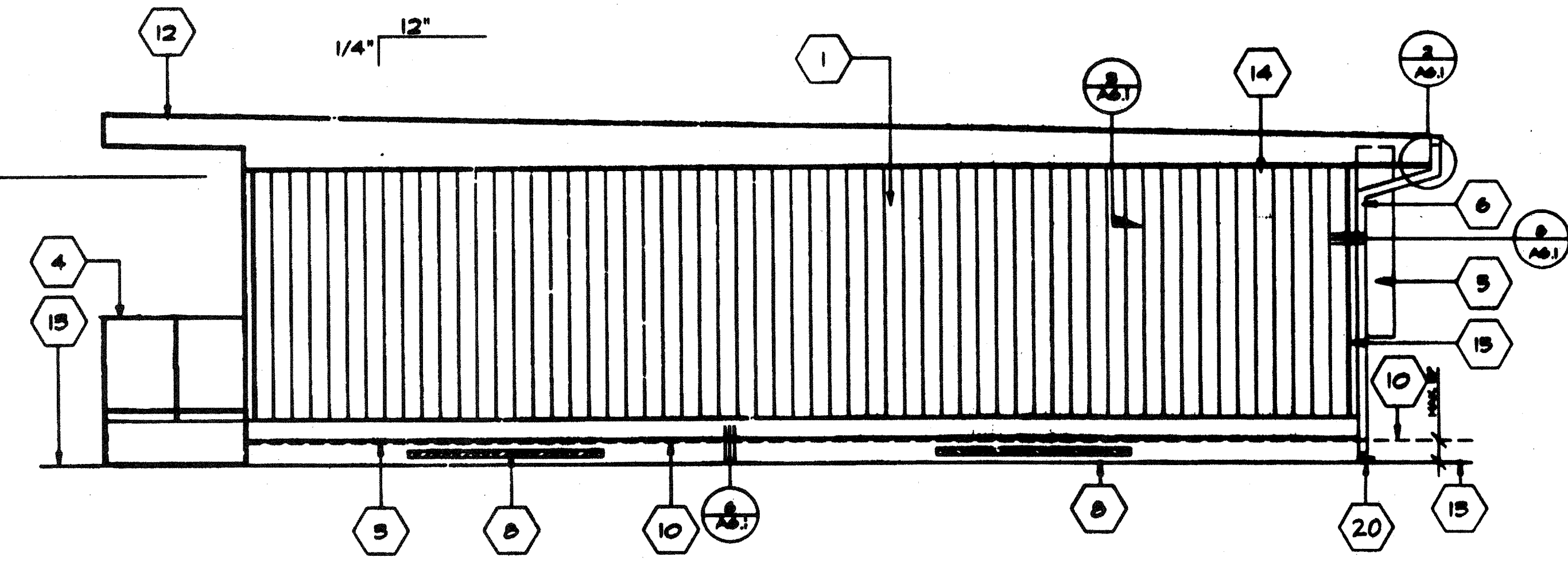
② SIDE ELEVATION (LEFT)

SCALE 1/4"=1'-0"



③ REAR ELEVATION

SCALE 1/4"=1'-0"



④ SIDE ELEVATION (RIGHT)

SCALE 1/4"=1'-0"

KEY NOTES

- ① TYPICAL EXTERIOR SIDING (SEE SECS)
- ② EXTERIOR LIGHT FIXTURE OVER DOOR (SEE SPECIFICATIONS)
- ③ TOP OF SKIRTING
- ④ RAMP AND LANDINGS SEE SHT. R-1
- ⑤ HVAC UNIT [HV]
- ⑥ DOWNSPOUT (TYP.) ONE FASTEN TO BLDG. TYP. 2 PLACES (SEE 5/A&B.1)
- ⑦ CONTINUOUS GUTTER WITH DOWNSPOUT (LOCATION OF DOWNSPOUT SHOW ON ROOF PLAN A2.0) SEE 9/A&B.1
- ⑧ VENT-SEE FOUNDATION DETAILS 5/FA.1
- ⑨ FINISH FLOOR LINE
- ⑩ BOTTOM FLANG OF FLOOR BEAM
- ⑪ ROOF HEADER
- ⑫ ROOF OVERHANG
- ⑬ FINISH GRADE
- ⑭ ROOF BEAM [ST]
- ⑮ COLUMN [ST]
- ⑯ ELECTRICAL STUB-OUT 1 1/2"Ø (TYPICAL)
- ⑰ GROUND STUB-OUT 3/4"Ø (TYPICAL)
- ⑱ FIRE ALARM HORN. [EL]
- ⑲ NEMA 6"X6" GUTTER BOX. [EL]
- ⑳ SPLASH BLOCK (BY OTHERS)

IDENTIFICATION STAMP
DIV. OF THE STATE ARCHITECT
APPROX 116574
AC 11/15/15
DATE SEP 23 2015

(MONO SLOPE)
SCALE 1/4"=1'-0"

CLLS. 033 4012-074

| REVISIONS |
|-----------|
| |
| |
| |
| |
| |
| |
| |
| |
| |
| |

| ELECTRICAL | MECHANICAL | STRUCTURAL | ARCHITECT | DIVISION OF THE STATE ARCHITECT |
|------------|------------|------------|-----------|---------------------------------|
| | | | | |

MODTECH INC.
2830 BARRETT AVE.
PERRIS, CA. 92572
PH. (909) 943-4014
FX. (909) 940-0427

MODTECH INC.

CONFIDENTIAL - THIS DOCUMENT AND THE INFORMATION CONTAINED HEREIN ARE THE PROPERTY OF MODTECH INC. UNAUTHORIZED COPYING, REPRODUCTION, OR OTHER UNAUTHORIZED USES ARE PROHIBITED.

JOB NO # 2510 #2514 #2515

DATE 2/7/96

CREATED BY

DATE

EXTERIOR ELEVATIONS

AA3.0