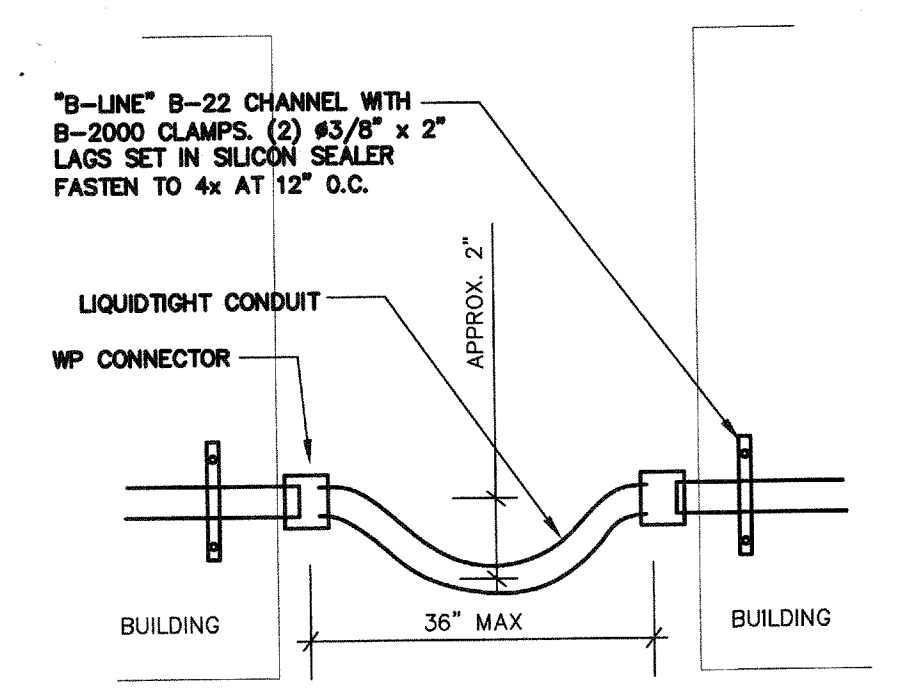


POWER AND SIGNAL PLAN

SCALE : 1/8" = 1' - 0"

| PANEL A | | 120/240V 1Ø 3W | | | | REAR | | | | FLUSH | | | |
|---------|----------------|----------------------|-----|-----|----------------|------------|-----|-----|-----|--------|-----|-----|-----|
| | | 100 AMP MAIN BREAKER | | | | 10,000 AIC | | | | NEMA 1 | | | |
| NO | SERVING | NOTE | QTY | AVG | TOTAL LOAD KVA | QTY | AVG | QTY | AVG | QTY | AVG | QTY | AVG |
| 1 | RECEPTACLE | | 12 | 12 | 0.71 | 80 | 2 | 8 | 10 | | | 2 | |
| 3 | RECEPTACLE | | 12 | 12 | 0.71 | 20 | 1 | 12 | 12 | | | 4 | |
| 5 | SPACE | | 12 | 12 | | 20 | 1 | 12 | 12 | | | 8 | |
| 7 | SPACE | | 12 | 12 | | 20 | 1 | 12 | 12 | | | 8 | |
| 9 | INT/EXT LIGHTS | | 12 | 12 | 0.9 | 20 | 1 | 12 | 12 | | | 10 | |
| 11 | INT LIGHTS | | 12 | 12 | 0.8 | 20 | 1 | 12 | 12 | | | 2 | |
| | | | | | 8.7KVA | | | | | | | | |
| | | | | | 8.7KVA | | | | | | | | |
| | | | | | 72A | | | | | | | | |

NOTES:
 1. PROVIDE CIRCUIT DIRECTORY INSIDE PANEL
 2. PROVIDE MECHANICAL LOCK ON BREAKER



FLEX CONDUIT SUPPORT DETAIL
N.T.S.

SHEET NOTES

- APPROXIMATE LOCATION FOR NEW FIRE ALARM (NF) SIGNAL AND AUDIO BOOSTER PANEL. PROVIDE 110V POWER CONNECTION AND DEDICATED CIRCUIT FROM PANEL A CIRCUIT 12. SEE DRAWING E-3 FOR MORE INFORMATION.
- PROVIDE POWER CONNECTION FOR RELOCATABLE BUILDING PRE-WIRED PANEL. SEE SINGLE LINE DIAGRAM ON DRAWING E-4.
- SIGNAL TC, 24"x24"x4"STD. NEMA3R. SURFACE MOUNT ON EXTERIOR AT +24" AFF. PROVIDE (2) 2" EMT AND STUB INTO BUILDING CEILING CAVITY WITH LB ELBOW FOR SIGNAL WIRING RACEWAY. CORE DRILL AND SEAL EXTERIOR WALL AS REQUIRED. PULL BACK PA/C/TELE CABLE AND CONNECT TO MASTER EQUIPMENT PER PLANS. SEE RISER DIAGRAMS.
- PROVIDE #6 COPPER GROUNDING CONDUCTOR AND BOND TO EACH SECTION STRUCTURAL STEEL BEAM. FIELD VERIFY EXACT LOCATION WITH GENERAL CONTRACTOR PRIOR TO INSTALLATION.
- NEW SECURITY ALARM NETWORK PANEL. MATCH EXISTING SYSTEM AS REQUIRED. PROVIDE 110V POWER CONNECTION AND INTERCONNECTION TO (E) MASTER EQUIPMENT. FIELD VERIFY EXACT LOCATION AND REQUIREMENT WITH OWNER PRIOR TO INSTALLATION. SEE RISER DIAGRAM.
- NEW IDF AND CABINET SURFACE MOUNTED BELOW CEILING. PROVIDE 110V POWER CONNECTION, DATA SWITCH, PD CABLE AND DATA CABLE PATCH PANEL FOR NEW DATA OUTLET CONNECTION. PROVIDE PD CABLE TO (E) IDF IN ADMIN OFFICE FOR INTERCONNECTION. FIELD VERIFY EXACT LOCATION AND REQUIREMENT WITH OWNER PRIOR TO INSTALLATION. SEE RISER DIAGRAM.
- PROVIDE DATA AND POWER OUTLET AT CEILING FOR SMART BOARD. FIELD VERIFY EXACT LOCATION AND REQUIREMENT WITH OWNER PRIOR TO INSTALLATION. SEE RISER DIAGRAM.
- PROVIDE 50 PAIR PUNCH DOWN BLOCK AND SURFACE MOUNTED BELOW CEILING FOR INTERCOM / TELEPHONE WIRING TERMINATION.
- EXISTING SIGNAL PULL BOX. FIELD VERIFY LOCATION.
- EXISTING U.G. CONDUITS TO REMAIN AND PULL IN NEW SIGNAL CABLE PER CONNECTION. FIELD VERIFY LOCATION.
- TYPICAL 4 AERIAL CABLES WITH RISER FOR NEW BUILDINGS POWER PANEL CONNECTION. FIELD VERIFY LOCATION.
- PROVIDE 2" EMT BETWEEN BUILDINGS AND STUB INTO BUILDING CEILING CAVITY FOR SIGNAL WIRING RACEWAY. CORE DRILL AND SEAL EXTERIOR WALL AS REQUIRED. PULL BACK PA/C/TELE CABLE TO ADMIN OFFICE MASTER EQUIPMENT FOR NEW DEVICES CONNECTION. SEE RISER DIAGRAM.
- NEW SURFACE MOUNTED POWER CONDUITS AND FEEDERS. SEE SINGLE LINE DIAGRAM.
- PROVIDE FLEX CONDUIT RACEWAY BETWEEN BUILDINGS
SEE DETAIL V/E-2

SIGNAL AND COMM. LEGEND

- SECURITY ALARM SYSTEM**
- DS2P DIGITAL SECURITY ALARM CONTROL PANEL, MODEL SONTROL (64ZONE). INTERFACE WITH EXISTING BUILDING MASTER SECURITY ALARM PANEL AS REQUIRED.
 - K LEO KEYPAD - MATCH EXISTING EQUIPMENT AS REQUIRED.
 - M DUAL TECHNOLOGY CEILING MOUNT DETECTOR. MATCH EXISTING EQUIPMENT AS REQUIRED.
 - E EXTERIOR BELL (SIREN) - DSC6510W WITH WEATHERPROOF BACKBOX AND TAMPER SWITCH.
 - W DOOR CONTACT SWITCH. RECESS ABOVE DOOR JAMB AT OPEN SIDE.
 - B INDOOR SECURITY ALARM CABLE. WEST PENN #421
 - B1 OUTDOOR SECURITY ALARM CABLE. WEST PENN #40224
- COMMUNICATION (TELEPHONE/INTERCOM) SYSTEM**
- ▽ HANSEY/P PHONE - FIELD VERIFY MODEL NO. AND MATCH EXISTING MASTER EQUIPMENT AS REQUIRED.
 - SP CEILING SPEAKER - RAULAND JUS0221 W/ACC100 Baffle. PROVIDE BACKBOX AND CEILING SUPPORT AS REQUIRED
 - SP HP OUTDOOR SPEAKER - ATLAS #4P15 HORN W/AFIR AND LONELL (#684 FOR SURFACE, #P07X FOR RECESS) BACK BOX W/SILK GRILL
 - T OUTDOOR TELE/AC CABLE. 22AWG SOLID COPPER 12 PAIR SHIELDED AND 12 PAIR UNSHIELDED CABLE.
 - T1 INDOOR TELEPHONE CABLE. CAT.3 22AWG SOLID COPPER AUTP SHIELDED CABLE.
 - P1 OUTDOOR PA/C CABLE - WEST PENN #400-389
- DATA COMMUNICATION SYSTEM**
- Q2 DATA OUTLET - LEVITON CAT SE (DUAL RECEPTACLE RED IN COLOR FOR ADMINISTRATIVE)
 - Q2 DATA OUTLET - LEVITON CAT SE (DUAL RECEPTACLE BLUE IN COLOR FOR INSTRUCTIONAL)
 - FO FIBER OPTIC CABLE - 1/4" INNER DUCT WITH J-HOOK IN ATTIC AND 2" FOR OUTDOOR. SEE RISER DIAGRAM FOR MODEL NO.
 - C1 (ONE) CAT SE 22AWG AUTP. SEE RISER DIAGRAM FOR MODEL NO.
 - C2 (TWO) CAT SE 22AWG AUTP. SEE RISER DIAGRAM FOR MODEL NO.
- NOTES:**
- ALL SIGNAL CONDUCTORS CANNOT SPLICE INSIDE PULL BOX. CONDUCTOR MUST BE CONTINUOUS RUN BETWEEN SIGNAL DEVICES BACK BOX OR ABOVE GROUND TERMINAL CABINET.

Ownership of Documents
 This document, the ideas and designs incorporated herein, as an instrument of Professional Service is the property of Integrated Designs by SOMAM, Inc. and is not to be used, in whole or in part for any other project without written authorization.
 © COPYRIGHT 2013

Integrated designs by SOMAM, Inc.
 ARCHITECTURE - ENGINEERING - INTERIOR DESIGN - CONSTRUCTION MANAGEMENT
 4011 N. Fremont, Suite 130, Fresno, California 93710
 Phone (559) 439-0881 Fax (559) 439-0887
 www.integrateddesigns.com
 www.somam.com

Rev. Date: _____
 Revision Description: _____

POWER AND SIGNAL PLAN

MUNSEY ELEMENTARY
4 RELOCATABLE CLASSROOMS
 BAKERSFIELD CITY SCHOOL DISTRICT
 3801 BRAVE AVE., BAKERSFIELD, CA 93309

Issue Date: 06/00/13
 Date: 06/02/13
 Designer: J. CHONG
 DRC: J. CHONG
 PC: C.M.

Agency Approval Stamp:

IDENTIFICATION STAMP
 DIV OF THE STATE ARCHITECT
 APPROX 110574
 AC: [Signature] FLS: [Signature] SS: [Signature]
 DATE: SEP 23 2015

Stamp(s): _____

Job No.: **5156**

Sheet No.: **E-2**

Release: _____

CONSULTING ENGINEERS
JOHN CHONG ENGINEERING
 JOHN S. CHONG
 E 14419
 Exp. 8/30/2016
 ELECTRICAL
 STATE OF CALIFORNIA

2077 E. DECATUR AVE, FRESNO CA 93710
 (559) 325-9988 • FAX 257-3401
 joengineer@aol.com