

# FIRE ALARM MAIN PANEL REPLACEMENT

## MUNSEY ELEMENTARY SCHOOL

### BAKERSFIELD CITY SCHOOL DISTRICT

#### INDEX OF DRAWINGS

GENERAL INFORMATION	G-001	GENERAL INFORMATION SHEET
ELECTRICAL SHEETS	E-0	GENERAL NOTES, SYMBOLS, CODES, REQUIREMENTS
E-1	FIRE ALARM SITE PLAN	
E-2	ADMINISTRATION BUILDING FIRE ALARM PLAN	
E-3	FIRE ALARM SLD PANELS, CALCULATIONS	

#### BUILDING CODE DATA

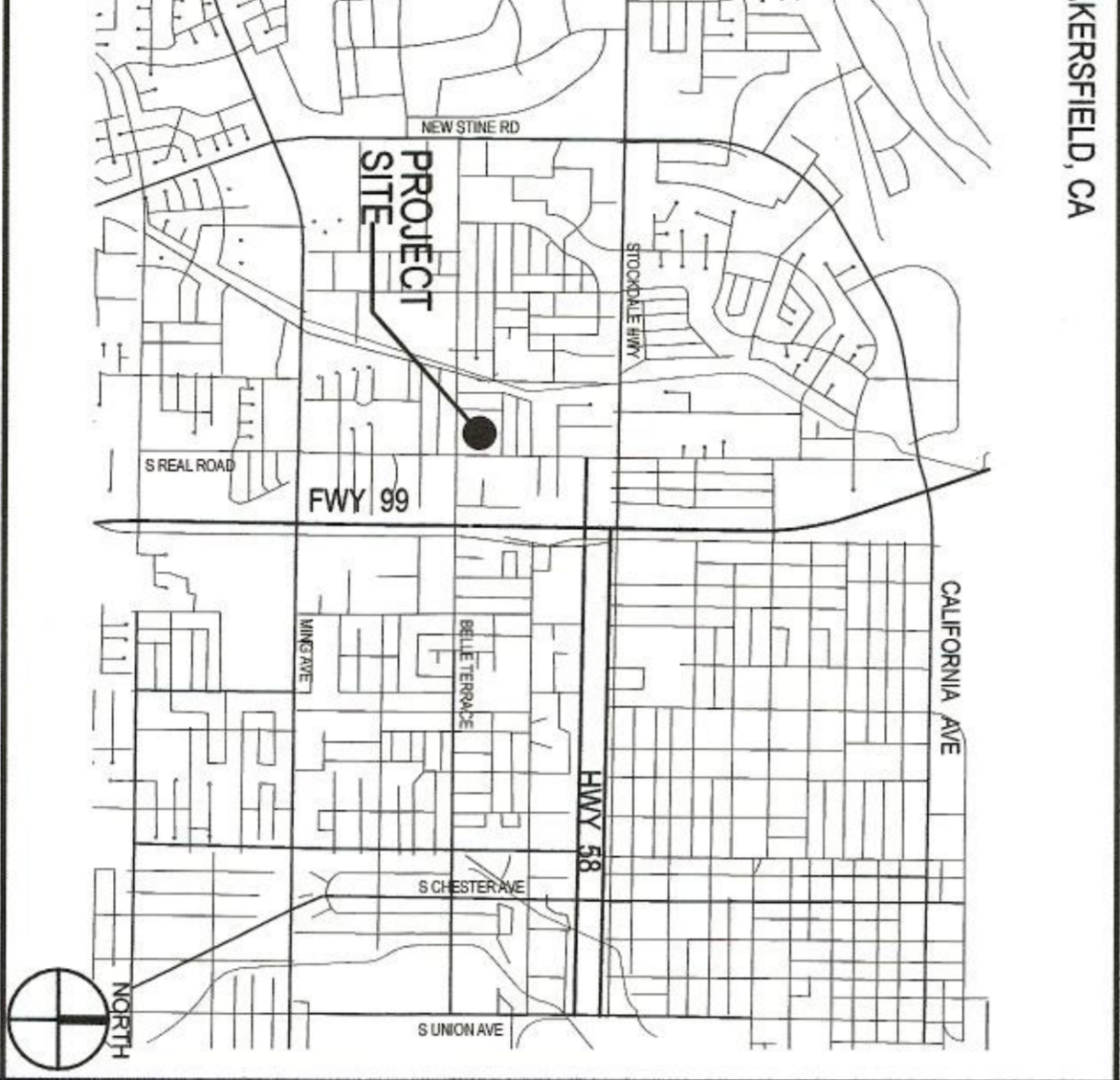
- ALL DRAWINGS AND CONSTRUCTION SHALL CONFORM TO THE FOLLOWING CODES:
- 2007 CALIFORNIA ADMINISTRATIVE CODE, CALIFORNIA CODE OF REGULATIONS, TITLE 24, PART 1
  - 2007 CALIFORNIA FIRE CODE, CALIFORNIA CODE OF REGULATIONS, TITLE 24, PART 7
  - 2007 CALIFORNIA BUILDING STANDARDS COMMISSION, CALIFORNIA ENERGY CODE, CALIFORNIA CODE OF REGULATIONS, TITLE 24, PART 6
  - 2007 CALIFORNIA BUILDING STANDARDS COMMISSION, CALIFORNIA MECHANICAL CODE, CALIFORNIA CODE OF REGULATIONS, TITLE 24, PART 4
  - 2007 CALIFORNIA BUILDING STANDARDS COMMISSION, CALIFORNIA PLUMBING CODE, CALIFORNIA CODE OF REGULATIONS, TITLE 24, PART 5
  - 2007 CALIFORNIA BUILDING STANDARDS COMMISSION, CALIFORNIA ELECTRICAL CODE, CALIFORNIA CODE OF REGULATIONS, TITLE 24, PART 3
  - 2007 CALIFORNIA BUILDING STANDARDS COMMISSION, CALIFORNIA CODE OF REGULATIONS, TITLE 24, PART 12
  - 2007 CALIFORNIA BUILDING STANDARDS COMMISSION, CALIFORNIA AUTOMATIC SPRINKLER SYSTEM
  - 2002 NFPA 14, STANDPIPE SYSTEM
  - 2002 NFPA 17, WET CHEMICAL SYSTEM
  - 2002 NFPA 23, PRIVATE SERVICE VEHICLES
  - 2002 NATIONAL FIRE ALARM CODE
  - 2000 NOTE: SEE THE STANDARDS SET FOR VISUAL SERVICES
  - 2000 NFPA 203, OPTICAL ALARM FLUOY OF FLOOR COVERINGS SYSTEMS
  - 2001 NFPA 207, CLEAN AGENT FIRE EXTINGUISHING SYSTEMS
  - 2001 NFPA 211, UL LISTED ALARM PANELS

#### CONSULTANTS

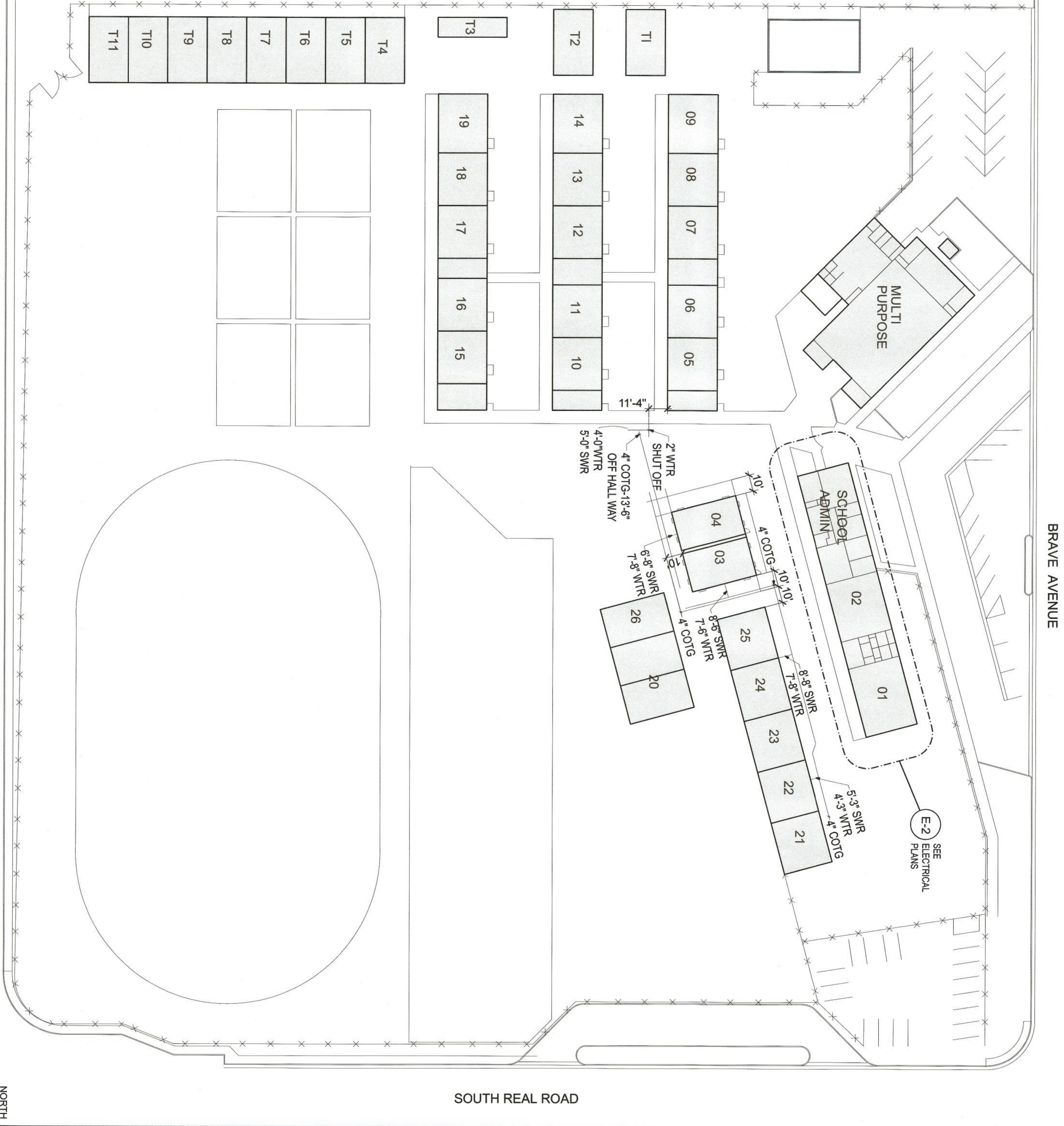
**ARCHITECT:**  
 GORDON ARCHITECTS, INC.  
 5500 WING AVENUE, SUITE 280  
 BAKERSFIELD, CA 93309  
 (801) 832-5259  
 (801) 832-4291 FAX

**ELECTRICAL:**  
 JEFFREY ELECTRIC ENGINEERING DESIGN  
 5500 WING AVENUE, SUITE 280  
 BAKERSFIELD, CA 93309  
 (801) 832-5259  
 (801) 832-4291 FAX

#### VICINITY MAP



#### OVERALL SITE PLAN

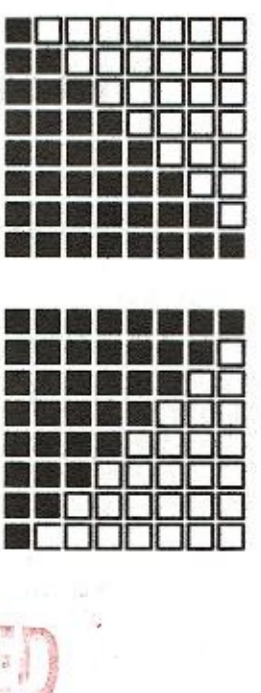


#### ABBREVIATIONS

AC	ALUMINUM CHANNEL	CL	CORNER	CO	COURT
AD	ALUMINUM DRAIN	CM	COMMON	CS	COURT SIDE
AE	ALUMINUM EXTRUSION	CP	CORNER PANEL	CS	COURT SIDE
AG	ALUMINUM GLASS	CR	COURT RAMP	CS	COURT SIDE
AI	ALUMINUM INSULATION	CS	COURT SIDE	CS	COURT SIDE
AL	ALUMINUM LATH	CS	COURT SIDE	CS	COURT SIDE
AM	ALUMINUM MESH	CS	COURT SIDE	CS	COURT SIDE
AN	ALUMINUM NAIL	CS	COURT SIDE	CS	COURT SIDE
AO	ALUMINUM OILING	CS	COURT SIDE	CS	COURT SIDE
AP	ALUMINUM PANEL	CS	COURT SIDE	CS	COURT SIDE
AQ	ALUMINUM QUARTZ	CS	COURT SIDE	CS	COURT SIDE
AR	ALUMINUM RAIL	CS	COURT SIDE	CS	COURT SIDE
AS	ALUMINUM SILL	CS	COURT SIDE	CS	COURT SIDE
AT	ALUMINUM TIE	CS	COURT SIDE	CS	COURT SIDE
AV	ALUMINUM VENT	CS	COURT SIDE	CS	COURT SIDE
AW	ALUMINUM WIRE	CS	COURT SIDE	CS	COURT SIDE
AX	ALUMINUM X	CS	COURT SIDE	CS	COURT SIDE
AY	ALUMINUM Y	CS	COURT SIDE	CS	COURT SIDE
AZ	ALUMINUM Z	CS	COURT SIDE	CS	COURT SIDE

#### OVERALL SITE PLAN

#### BELLE TERRACE



**ORDIZ MELBY ARCHITECTS, INC.**  
 ARCHITECTS, INC.  
 SUITE 200  
 BAKERSFIELD, CALIFORNIA 93309  
 TELEPHONE (801) 832-5258  
 FACSIMILE (801) 832-4291



DANNY E. GORDZ, AIA  
 ARCHITECT C-14,728  
 WILLIAM J. MERTY, AIA  
 ARCHITECT C-16,835



**JEFFREY R. S. S.**  
 DIVISION OF STATE ARCHITECT  
 OFFICE OF REGULATION SERVICES  
 APPL. 03-1253  
 FILE # 15-6  
 APR 1 2008

**FIRE ALARM MAIN PANEL REPLACEMENT AT MUNSEY ELEMENTARY FOR: BAKERSFIELD CITY SCHOOL DISTRICT**

**1300 BAKER STREET, BAKERSFIELD, CALIFORNIA 93305**

MARK	DATE	DESCRIPTION
CD	10-31-08	DS4, SUBMITTAL

NO. 1140  
 CD DRAWING FILE  
 #P1140 F.A. Replacement.pln  
 DRAWN BY: mjb  
 CHECKED BY: EH  
 DATE: 10/31/08  
 CHECK AND VERIFY ALL DIMENSIONS BEFORE REPORT SUBMISSION TO THE ARCHITECT.  
 THE DRAWINGS, DEAS, AND DESIGNING REPRESENTATION OF THE ARCHITECT.  
 CONTRACT NO. 2008  
**GENERAL INFORMATION E1 SHEET**  
 SHEET IDENTIFICATION NUMBER **G-001**  
 SHEET 1 OF 1