

24'x40' CROSS SECTION A-A

GENERAL NOTES

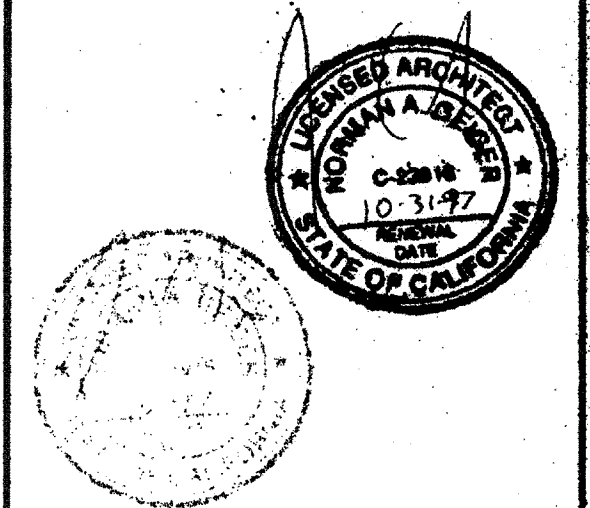
ALL FINISHES SHALL COMPLY WITH THE CALIFORNIA GREEN BUILDING ACT (CALIF. GOV. CODE DIVISION 9, 4, 7, 8, AND 10)

FILE # 15-6
 IDENTIFICATION STAMP
 DIV. OF THE STATE ARCHITECT
 OFFICE OF REGULATION SERVICES
 03-118272
 AC: FLS / SS: AL
 DATE: NOV - 8 2017
 TRACKING #: 63321-292

ABBREVIATIONS:
 H# YELLOW METAL
 AL OR ALUM ALUMINUM
 HE NOTED
 NO. NUMBER
 MBL MASONRY
 MBRM MASONRY
 MFC ABOVE FINISH FLOOR
 OVR OVERLAP
 PFC FOUNDATION
 PFT PRESSURE TREATED
 STRCY STRUCTURAL

NORMAN A. GEIGER
 AIA, CSI, CDT, ICBQ
 P.O. BOX 41064
 Sacramento, CA 95841
 (916) 332-2453 FAX
 (916) 332-2453 PHONE

GRAFICS ARCHITECTURAL SERVICES
 GEIGER



PACESETTER INDUSTRIES, INC.
 P.O. BOX 1151, MODOBOSTO, CA 95833 (916) 521-1600

24x40 RELOCATABLE BUILDING

LEGEND

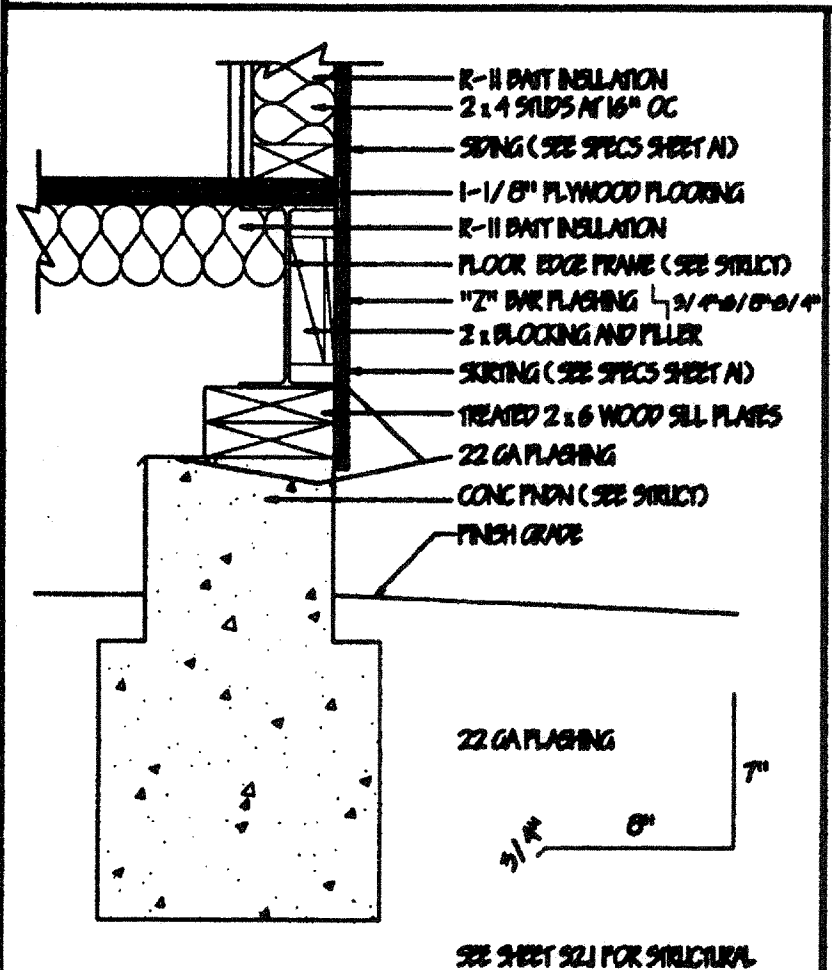
- BATT INSULATION
- WOOD MEMBER
- FLOORING
- GYPSUM BOARD
- PLYWOOD

APPROVALS

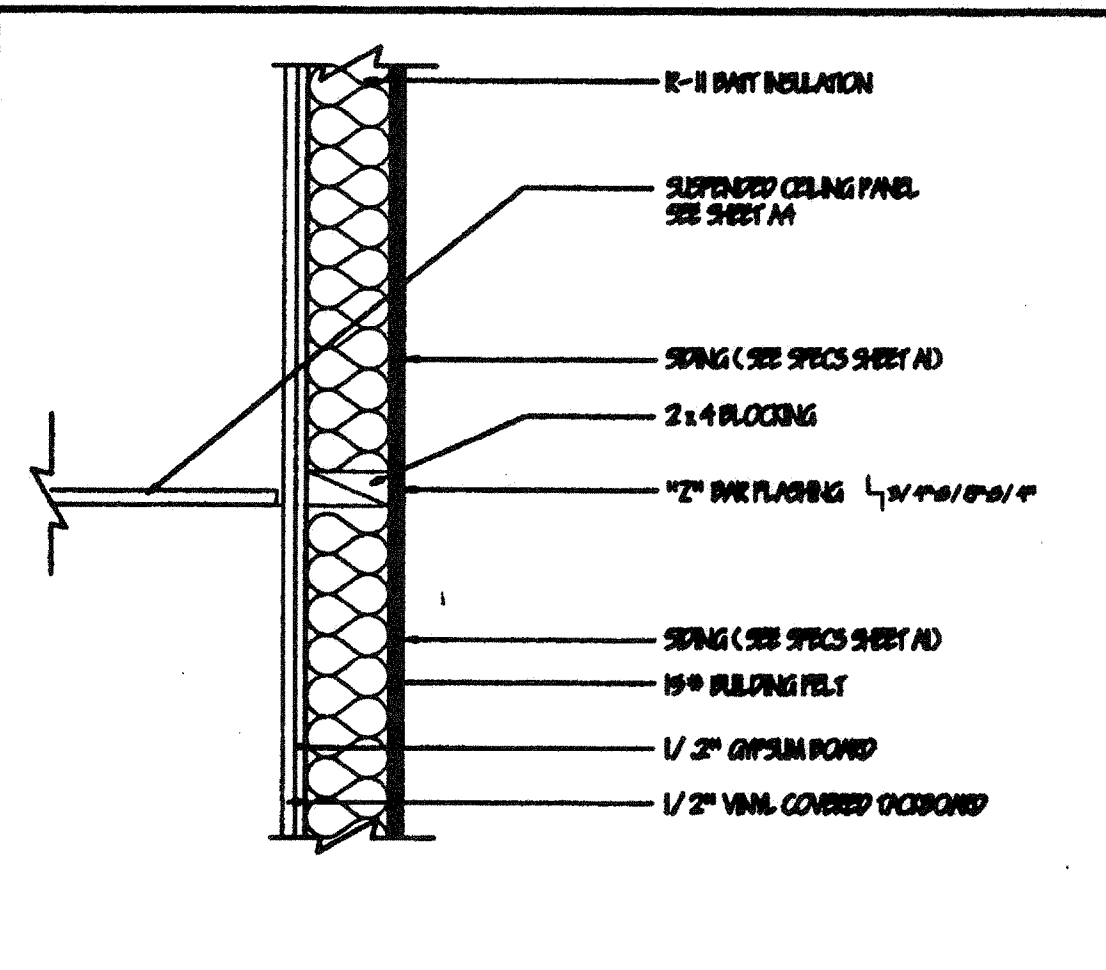
DATE: APR 20, 1997
 REV. 02: JUN 30, 1997

IDENTIFICATION STAMP
 DIV. OF THE STATE ARCHITECT
 OFFICE OF REGULATION SERVICES
 PC 330

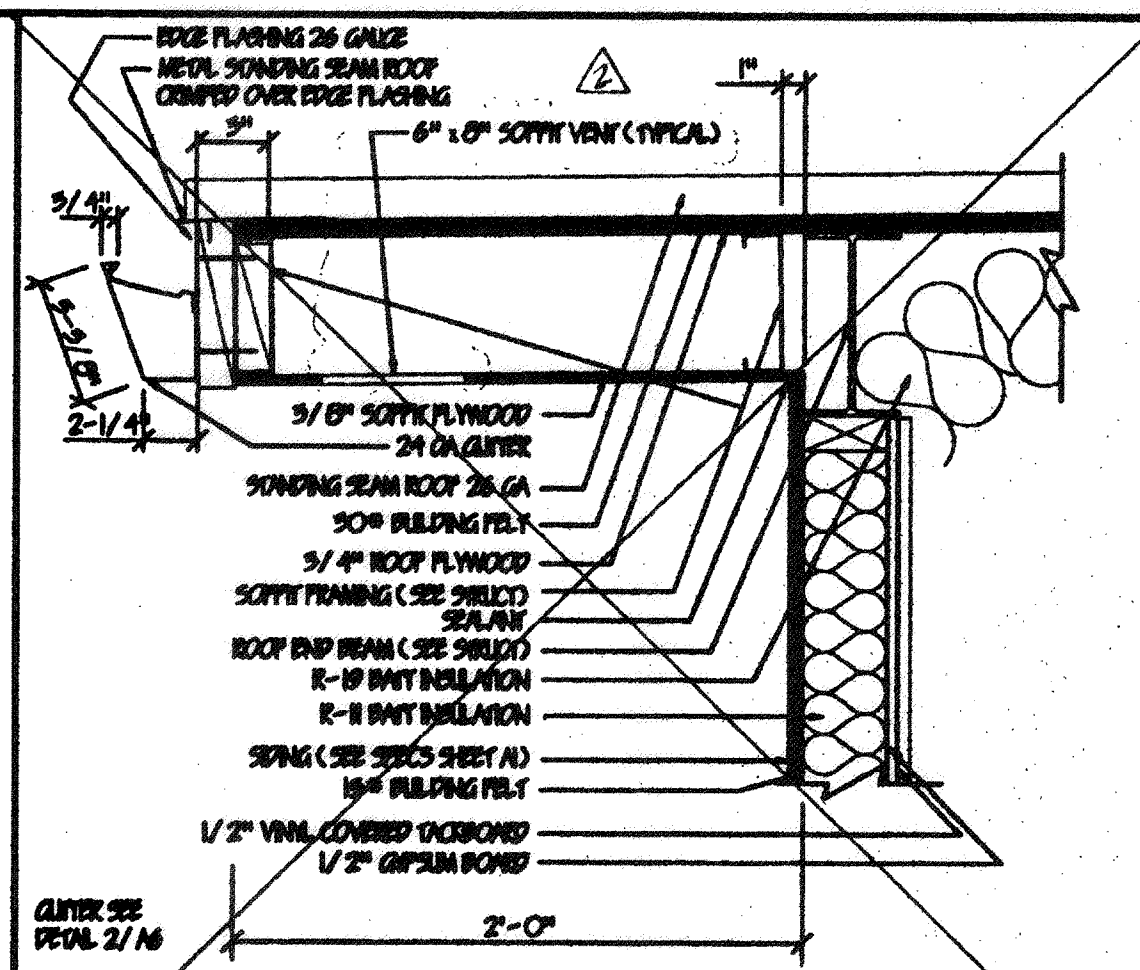
REVISIONS
 GENERAL NOTES
 REVISIONS
 BUILDING SECTION
 DETAILS
 SHEET
 A5
 6 of 21



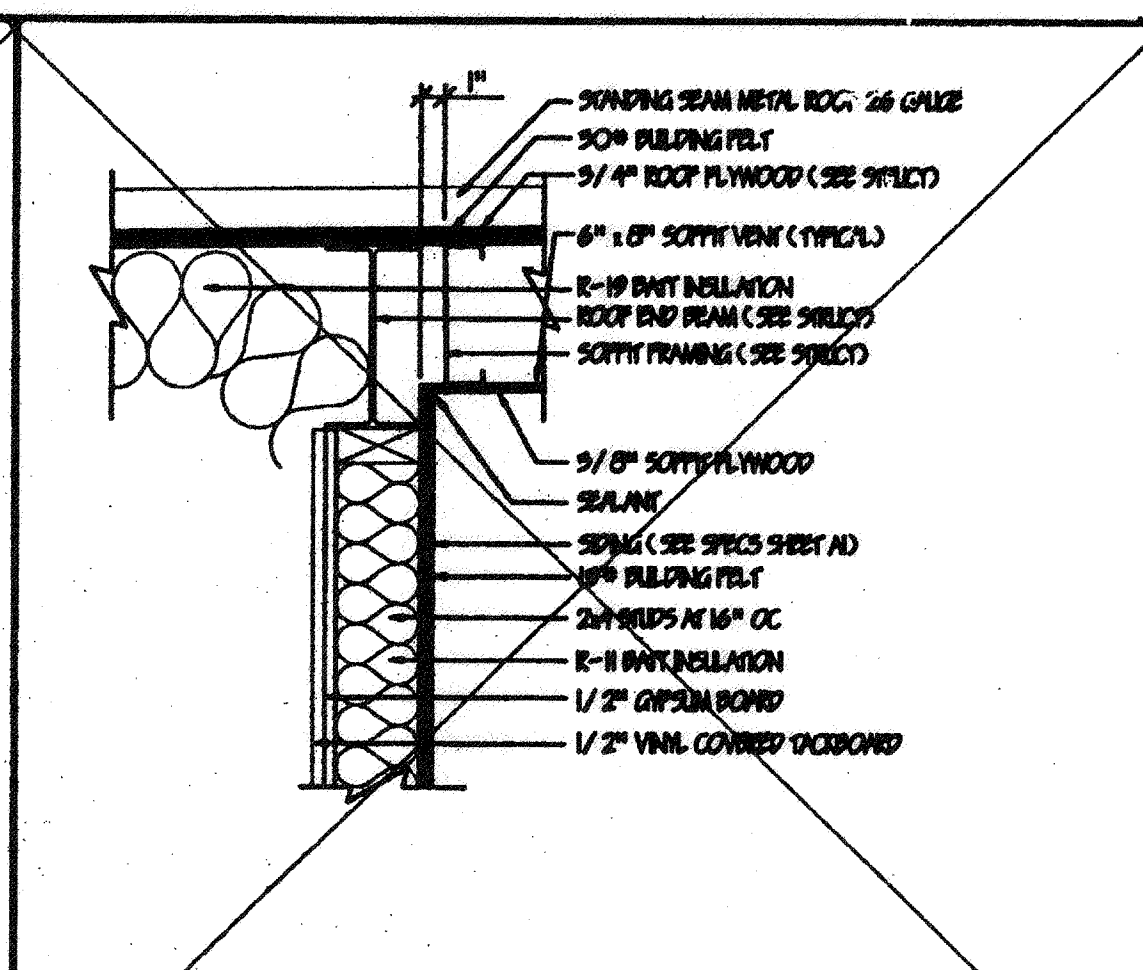
2 CONC FNDN



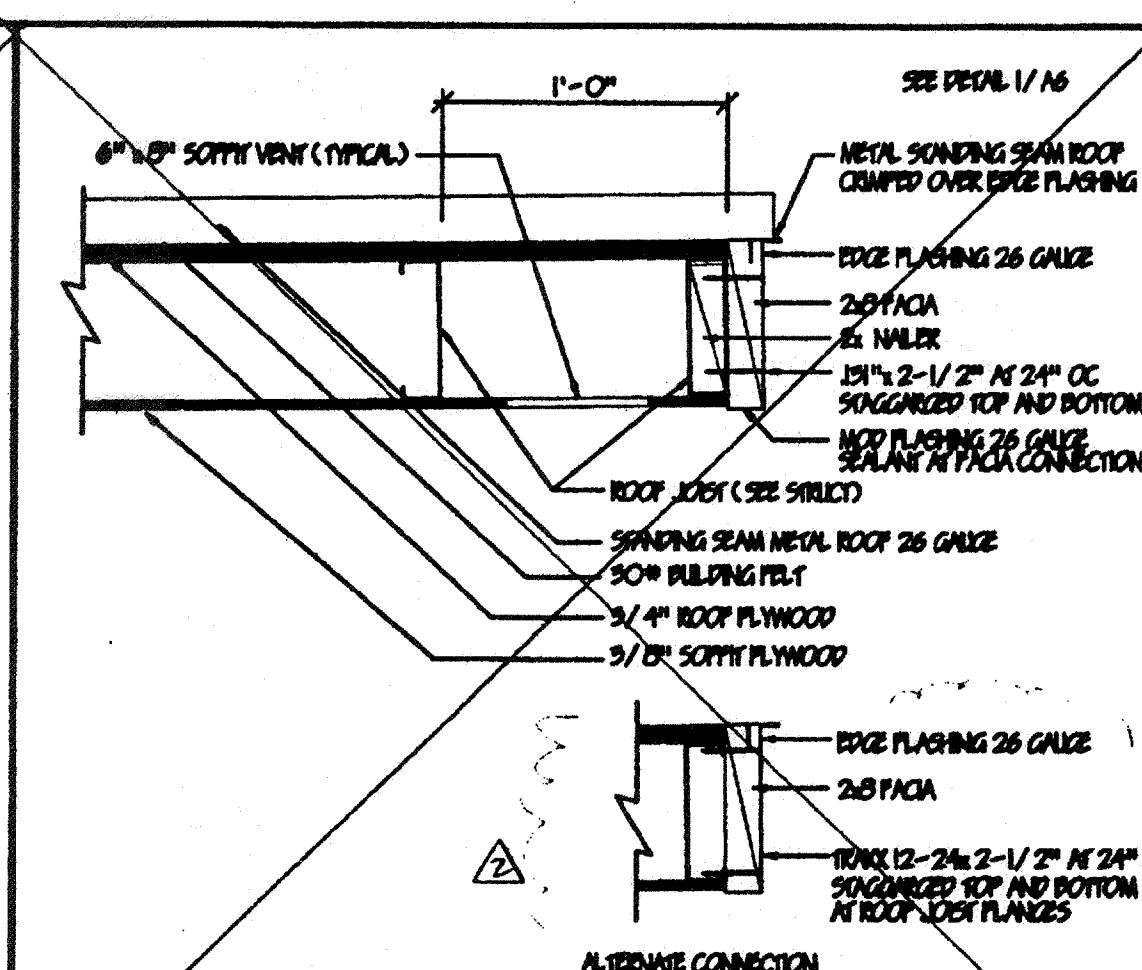
4 \"Z\" BAR FLASHING



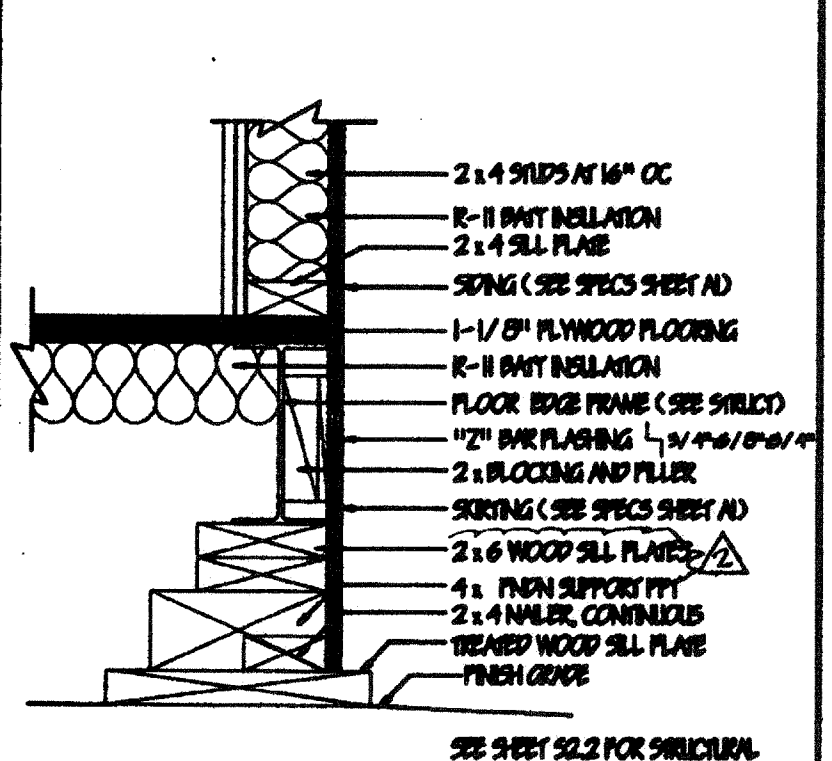
6 REAR SOFFIT OVERHANG



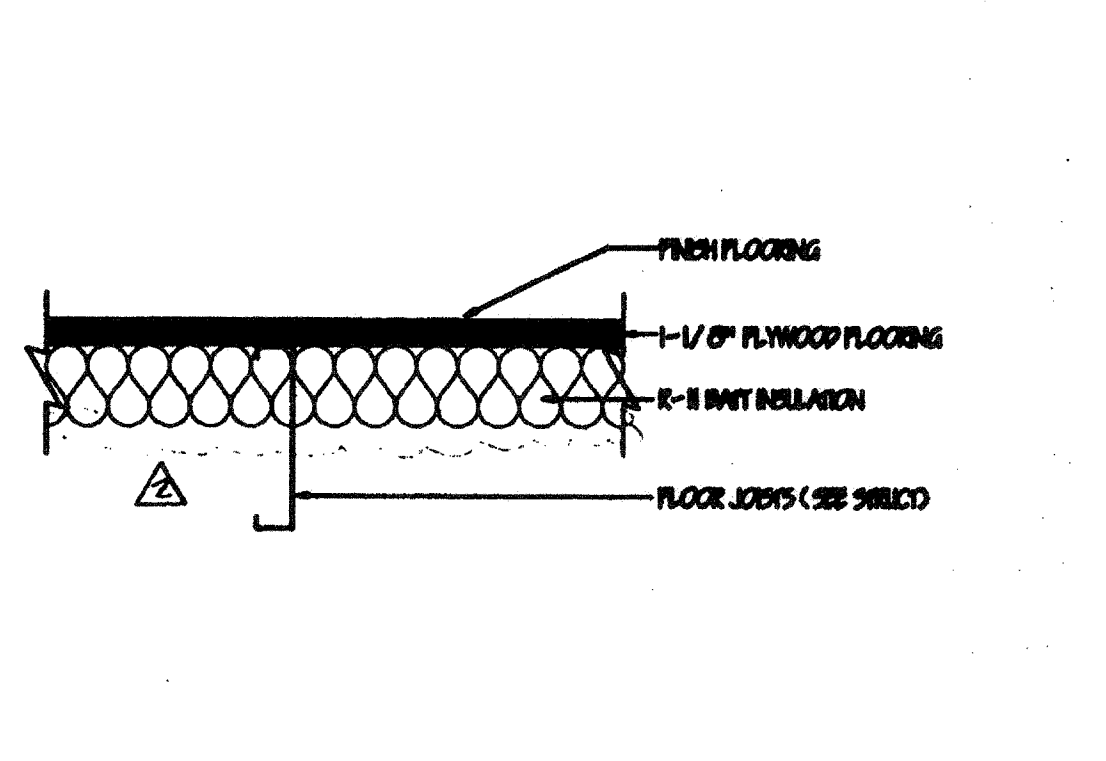
8 ENTRY SOFFIT OVERHANG



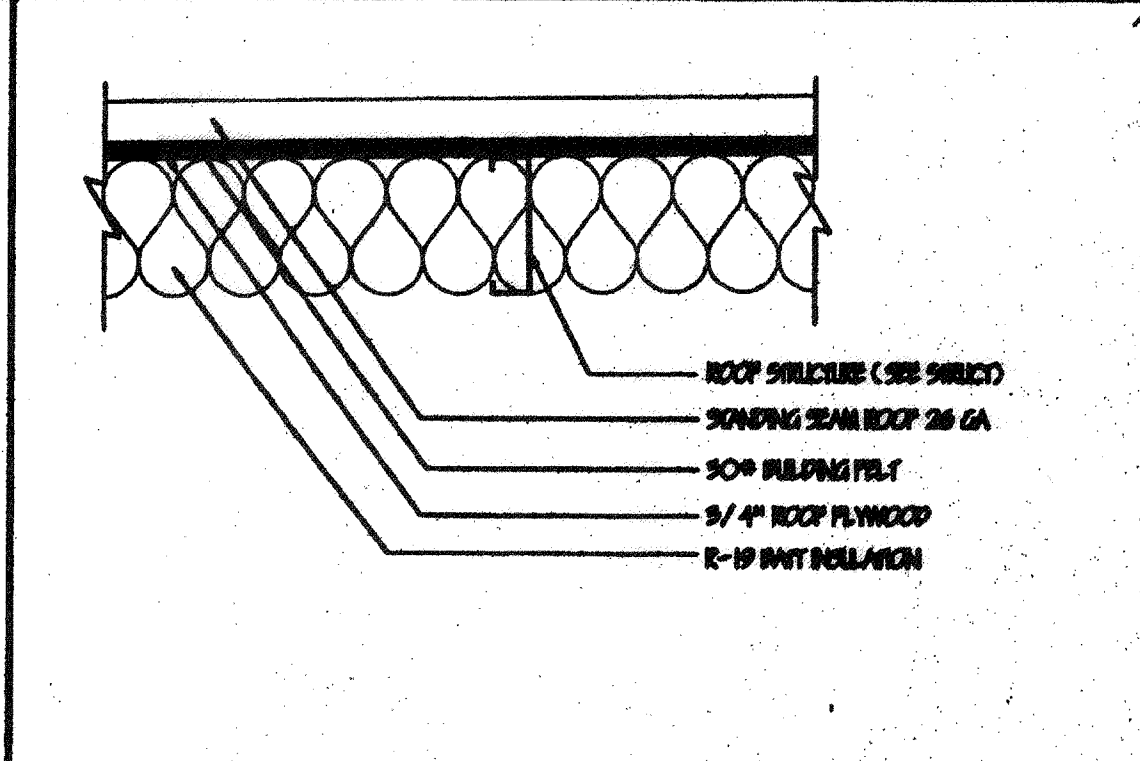
10 ENTRY SOFFIT OVERHANG



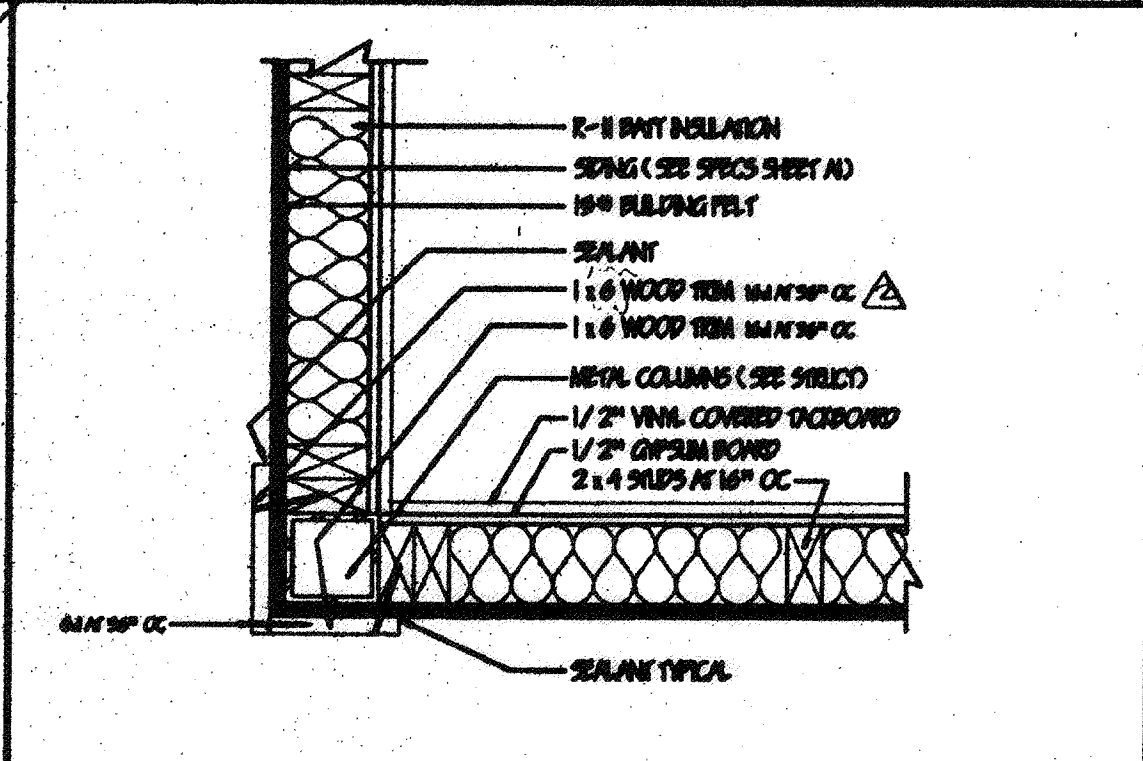
1 WOOD FNDN



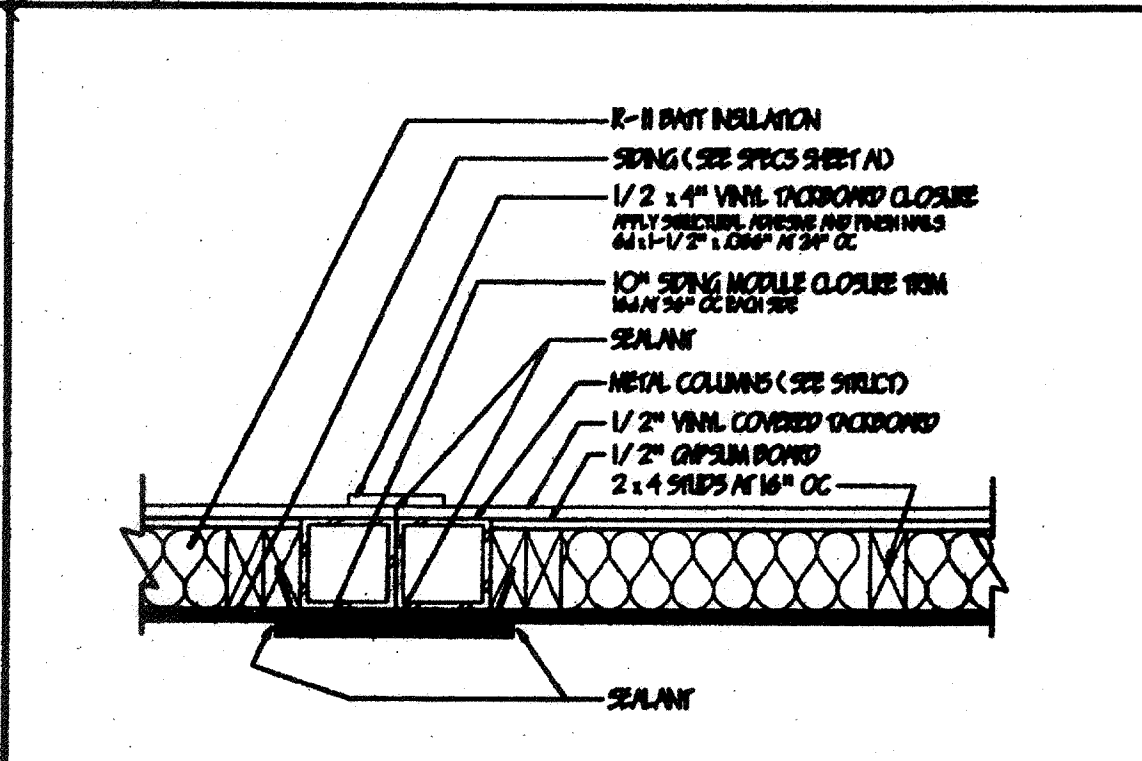
3 FLOOR



5 DETAIL



7 CORNER



9 MOD CONNECTION