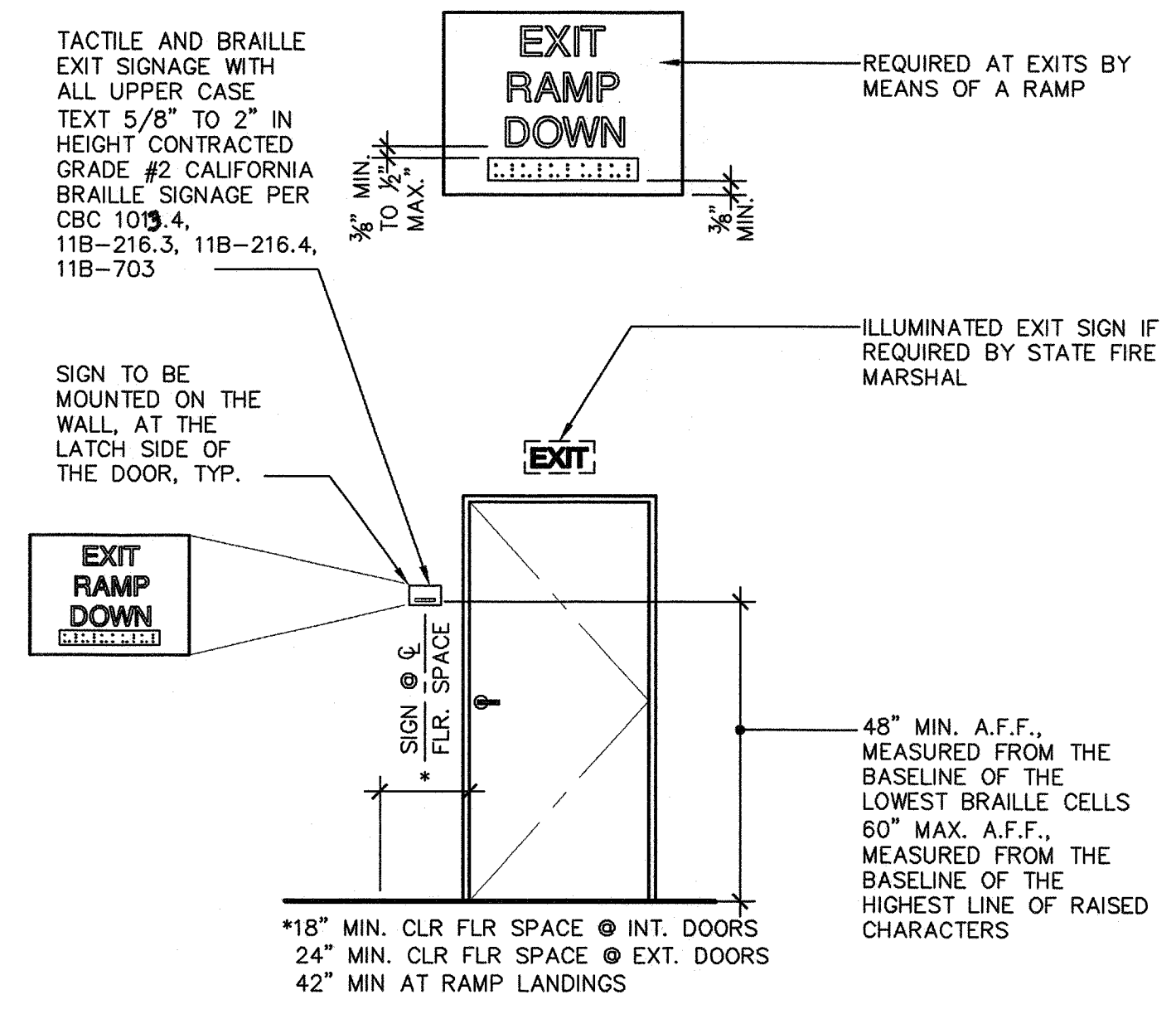


13 TYPICAL CHAIN LINK FENCE AND GATES
A1.04 ADY100-01

TYPICAL FENCE & GATE KEYNOTES

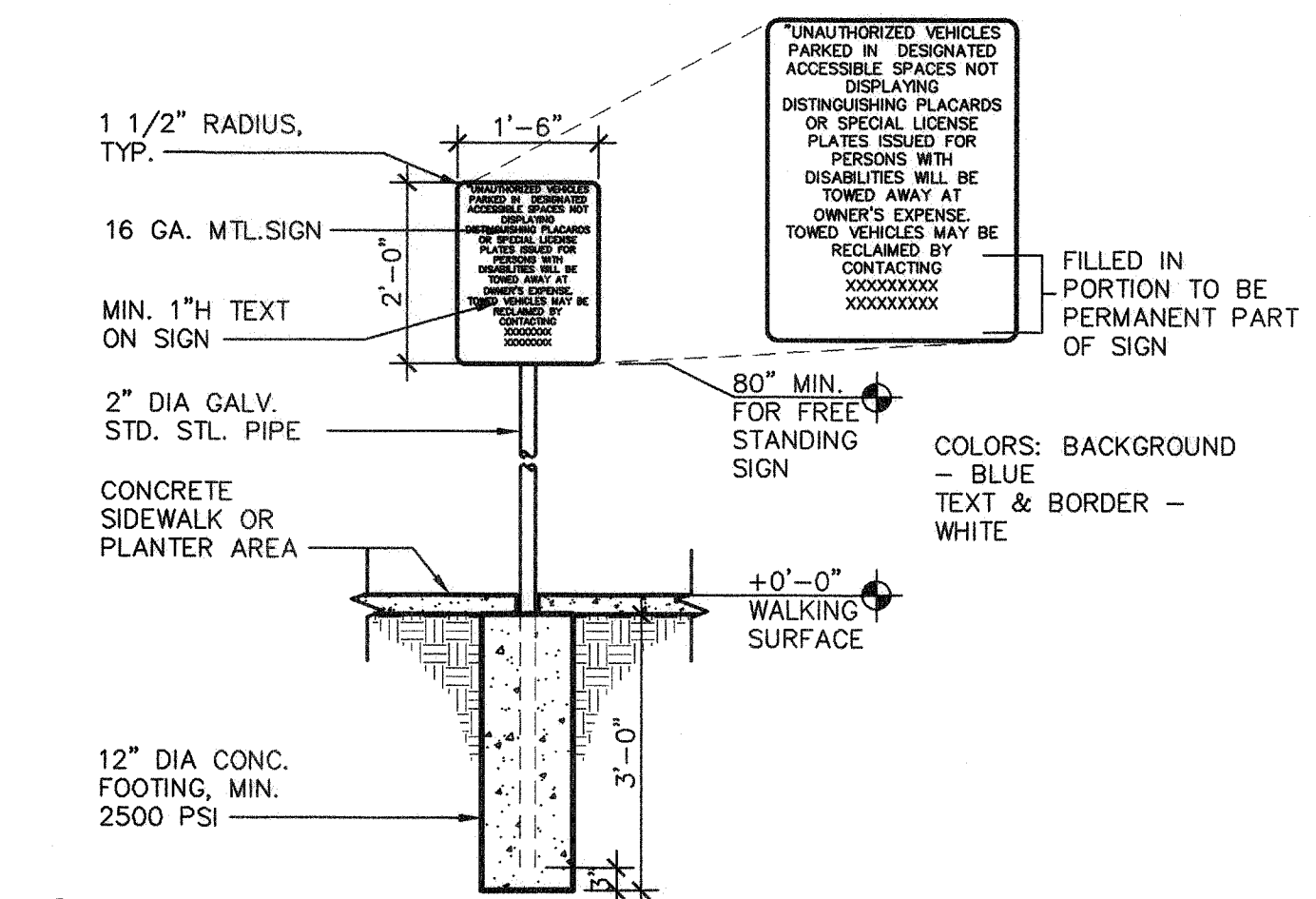
- 1 4" O.D. GALVANIZED STEEL GATE POST (9.1 lb/ft)
- 2 2 7/8" O.D. GALVANIZED STEEL END OR CORNER POST (5.79 lb/ft)
- 3 2" O.D. GALVANIZED STEEL GATE FRAME (2.72 lb/ft)
- 4 1 5/8" O.D. GALVANIZED STEEL HORIZONTAL RAIL (2.27 lb/ft)
- 5 2"x2" MESH x 9 GAUGE GALVANIZED FENCE FABRIC WITH KNUCKLED TOP AND BOTTOM SELVAGE. FENCE FABRIC TO BE GALVANIZED BEFORE WEAVING (GBW)
- 6 1/4"x3/4" GALVANIZED STEEL STRETCHER BAR
- 7 GALVANIZED STEEL STRETCHER BAR TENSION BAND, MIN. OF 6 TENSION BANDS
- 8 9 GAUGE (0.148" DIA.) GALVANIZED STEEL TIE WIRES OR HOG RINGS AT 15" MAX. SPACING. MIN. 8 TIE WIRES PER EACH 10" HORIZONTAL RAIL
- 9 GALVANIZED ADJUSTABLE TURNBUCKLE FOR 3/8" DIA. TRUSS ROD
- 10 3/8" DIA. GALVANIZED STEEL ADJUSTABLE TRUSS ROD. TRUSS RODS REQUIRED FOR ALL GATE POST PANELS AND END OR CORNER POST PANELS
- 11 3/8"x6" GALVANIZED HOOK BOLT WITH NUT IMBEDDED IN MIDWAY BETWEEN POSTS
- 12 7 GAUGE (0.177" DIA.) GALVANIZED STEEL TENSION WIRE
- 13 RAINPROOF CAP
- 14 LOCKING HASP
- 15 180° GATE HINGE, TYP
- 16 12"Ø CONCRETE POST FOOTING (TYP.)
- 17 TRIM, LEVER HANDLE & RIM CYLINDER LOCK PER DISTRICT STANDARD 34" - 44"
- 18 16ga GATE GUARD
- 19 10" HIGH x GATE WIDTH, 16 ga POWDER-COATED METAL KICK PLATE, TYP BOTH SIDES OF GATE.

- NOTES:
- DOOR SIGNS TO BE CONSTRUCTED FROM 1/4" THICK PLASTIC OR HEAT STAMPED FIGURES. COLORS TO BE SELECTED BY ARCHITECT.
 - ATTACH SIGNS USING FOUR (4) FLATHEAD, STAINLESS STEEL, TAMPER PROOF SCREWS, (COUNTERSUNK) AND ADHESIVE.
 - 70% CONTRAST BETWEEN CHARACTERS AND BACKGROUND

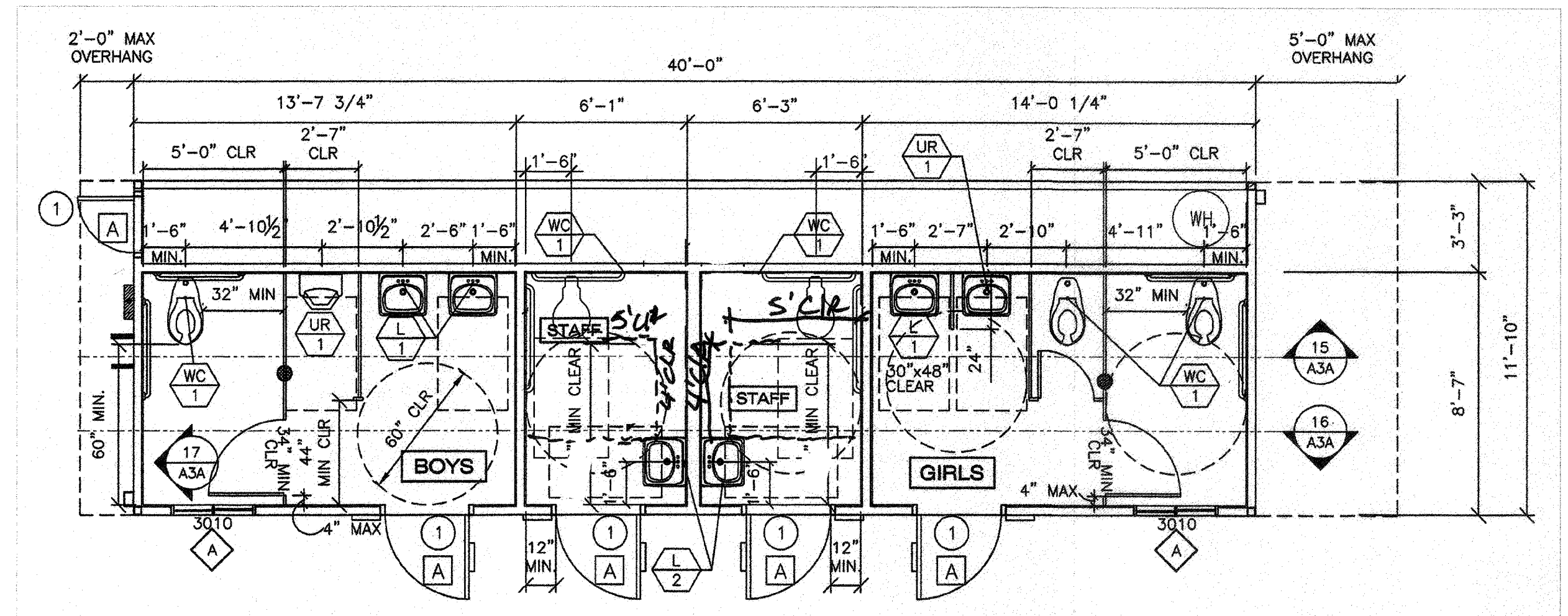


2 TYPICAL EXTERIOR DOOR SIGNAGE
A1.04 ADX200-01 SCALE: 3/8" = 1'-0"

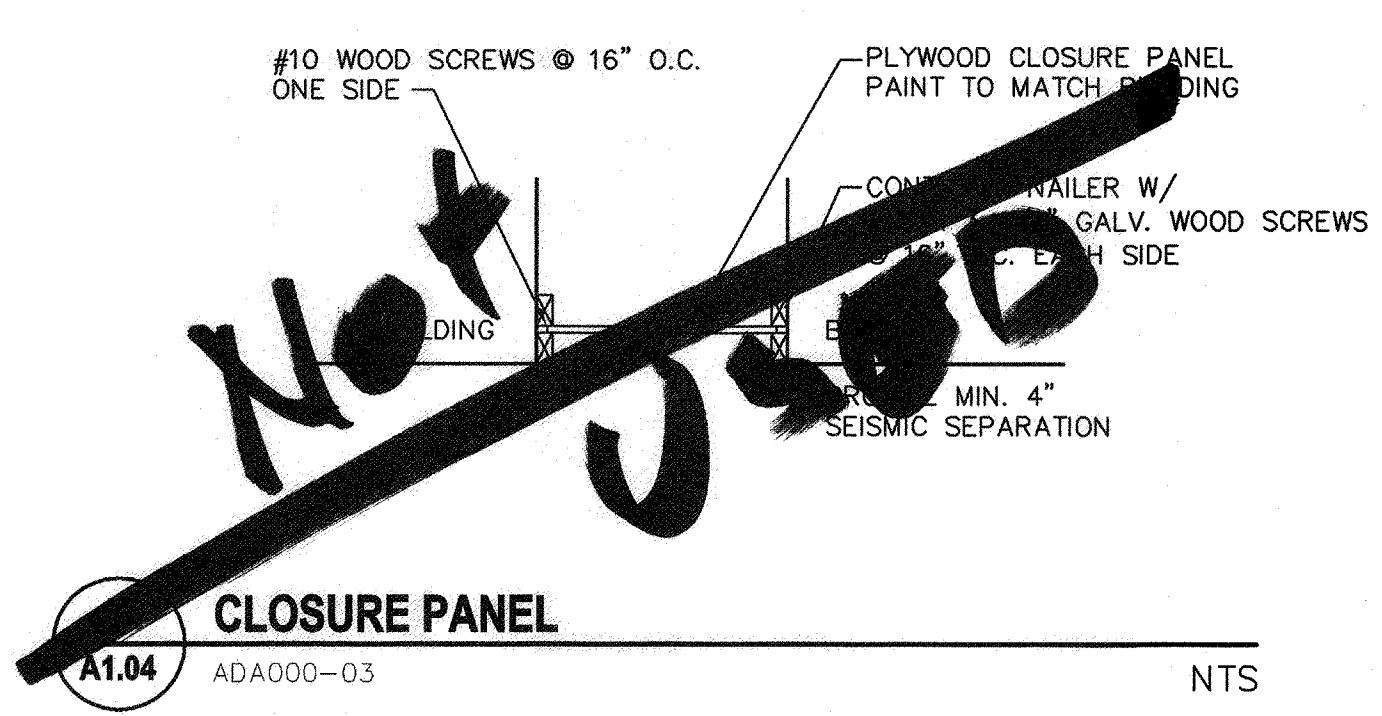
- REMOVE EXISTING WALL HUNG TOILET
- REMOVE EXISTING GRAB BARS
- RELOCATE REMOVED TOILET AND HANGING BRACKETS TO OPPOSITE WALL
- RELOCATE REMOVED GRAB BARS TO OPPOSITE WALL



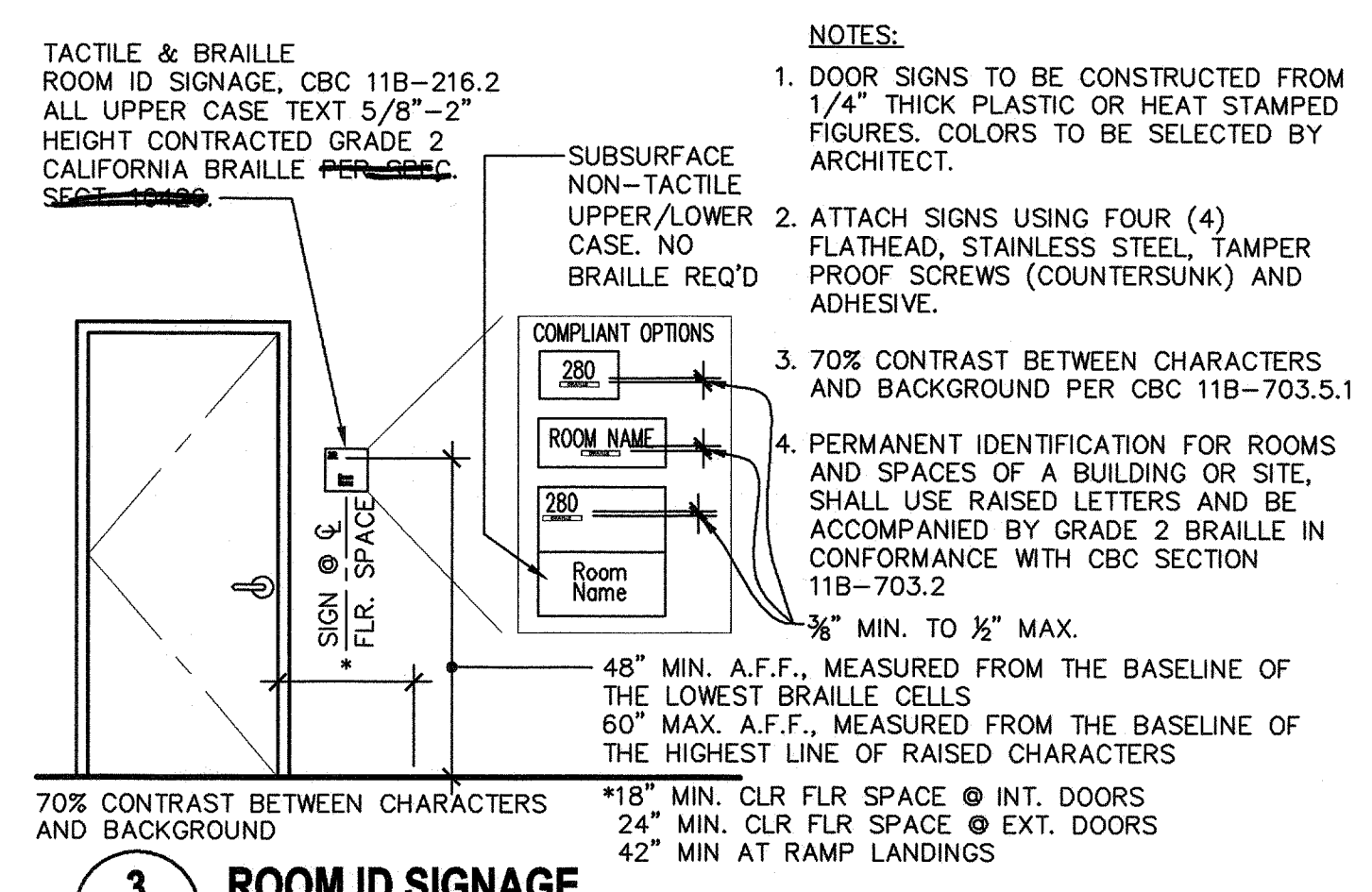
10 TOW AWAY SIGNAGE
A1.04 ADX100-10 SCALE: 1/2" = 1'-0"



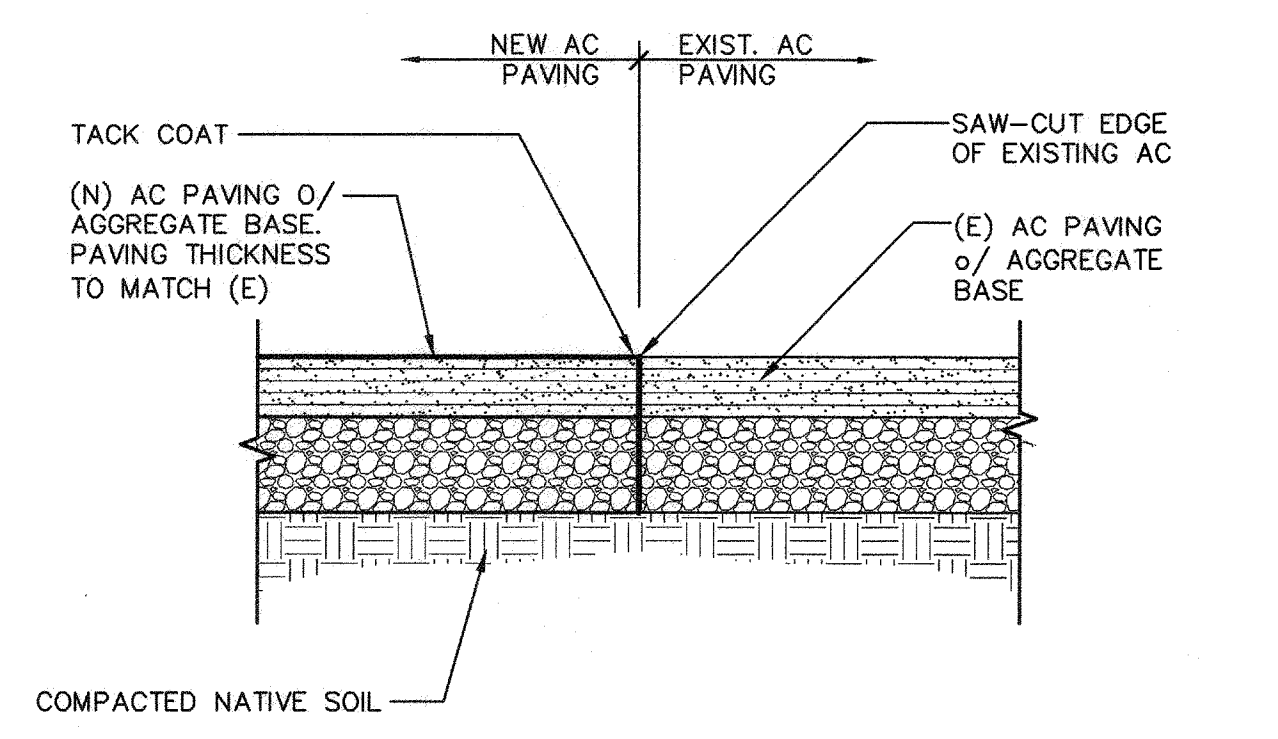
14 RESTROOM PLAN
A1.04



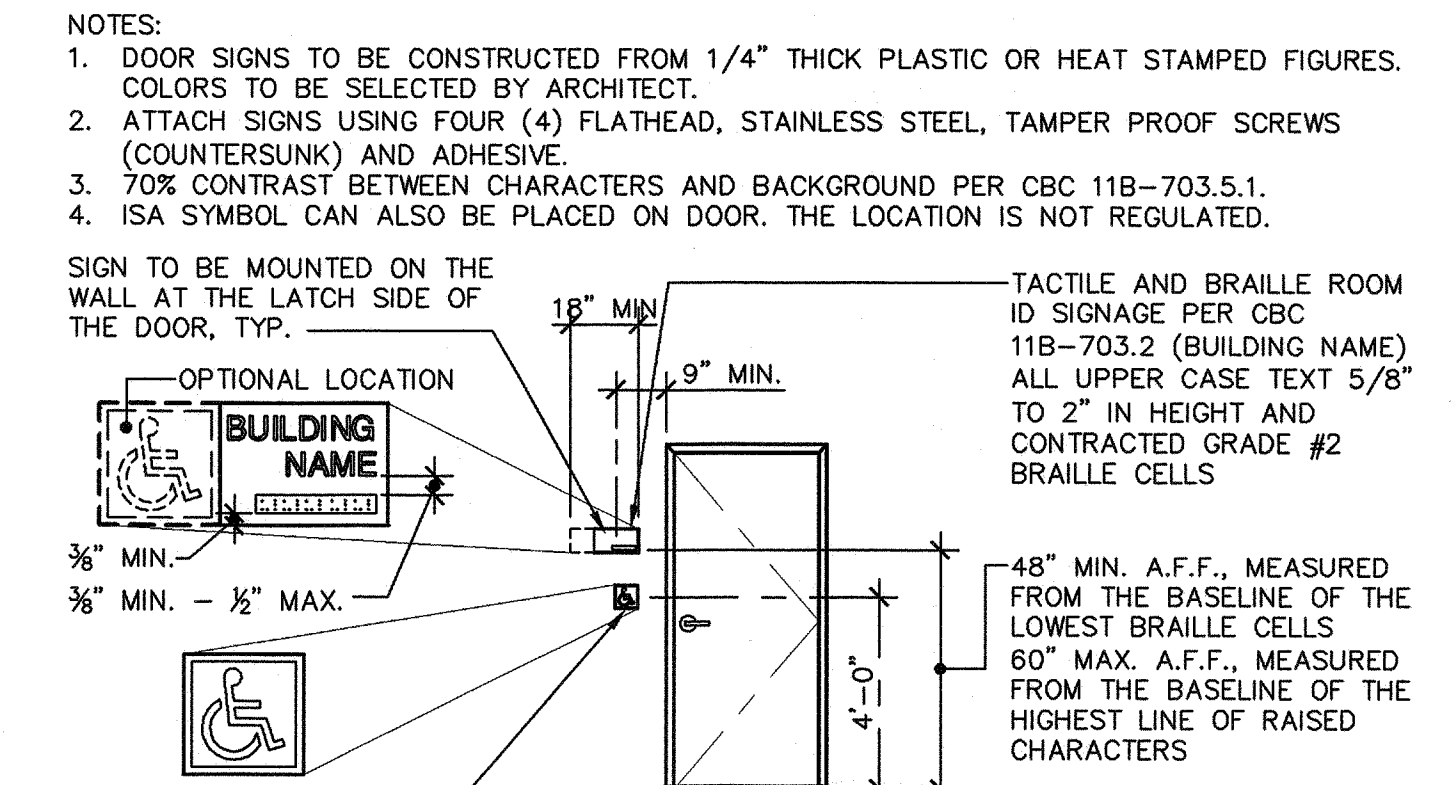
3 CLOSURE PANEL
A1.04 ADA000-03 NTS



3 ROOM ID SIGNAGE
A1.04 ADX100-01 SCALE: NO SCALE



8 (N) AC PAVING TO (E) AC PAVING
A1.04 ADS100-07 SCALE: 1 1/2" = 1'-0"



4 BUILDING ENTRANCE/I.S.A. SIGNAGE
A1.04 ADA100-01 SCALE: 1/4" = 1'-0"

Ownership of Documents
This document, the ideas and designs incorporated herein, as an instrument of Professional Service is the property of Integrated Design by SOMAM Inc. and is not to be used, in whole or in part for any other project without written authorization.
© COPYRIGHT 2017

integrated designs by SOMAM, Inc.
ARCHITECTURE - INTERIOR DESIGN - CONSTRUCTION MANAGEMENT
6011 N. Fresno, Suite 130 - Fresno, California 93710
Phone (559) 436-0887 Fax (559) 436-0887 E-Mail: design@somam.com
www.integrateddesigns.com

Revision Description: _____
Revision: _____
Rev. Date: _____

MUNSEY ELEMENTARY SCHOOL
BAKERSFIELD CITY SCHOOL DISTRICT
3801 BRAVE AVE BAKERSFIELD, CA

Issue Date: _____
ISSUE DATE: 11/02/17
Date: _____
Agency Approval Stamp: _____
FILE # 15-6
IDENTIFICATION STAMP
DIV. OF THE STATE ARCHITECT
OFFICE OF REGULATION SERVICES
03-118272
AC: MF, FL: SS, CL
DATE: NOV - 8 2017
TRACKING #: 63321-292

Stamp(s): _____

LICENSED ARCHITECT
CORTIS E. FLYNN
No. C 20968
STATE OF CALIFORNIA

Job No.: **5268**
Sheet No.: **A1.04**
Release: _____