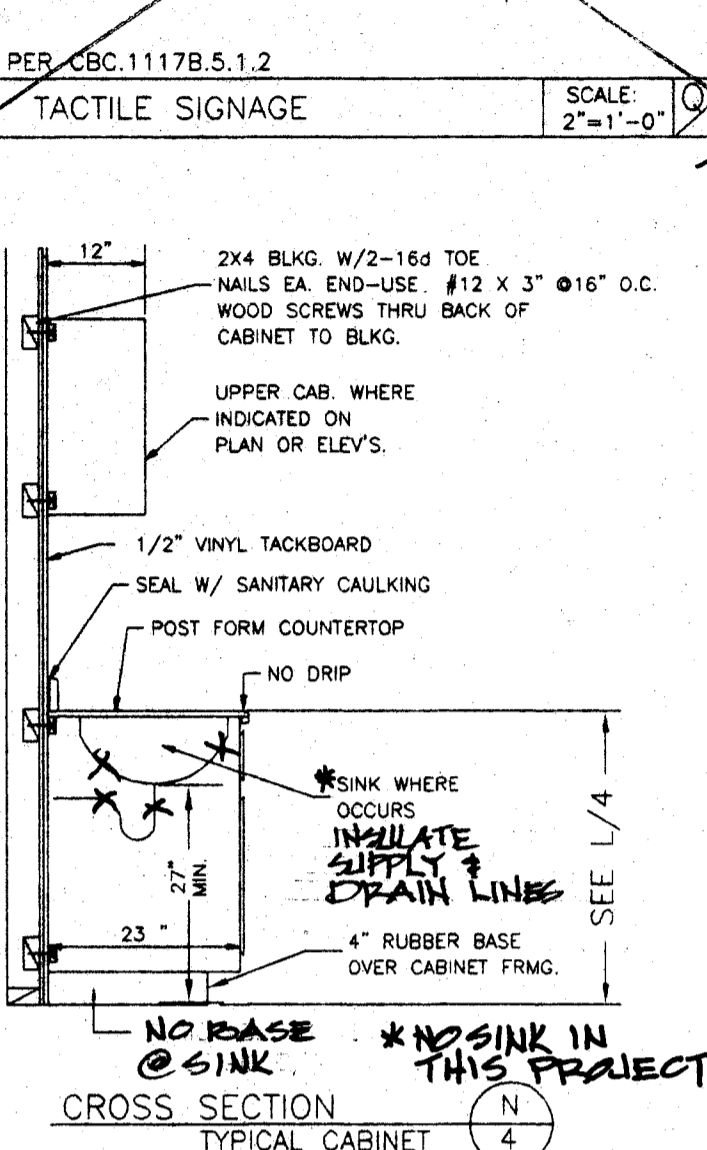
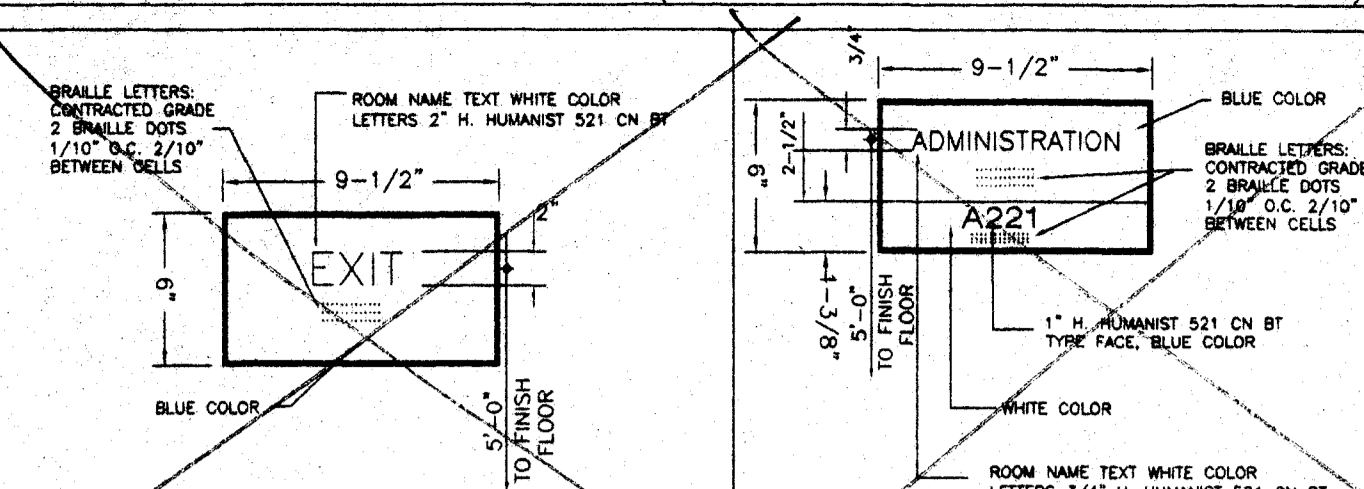


ACCESSIBILITY SIGNAGE (AS REQUIRED-BY DISTRICT)



DIMENSIONS FOR ACCESSIBILITY IN TOILET FACILITIES

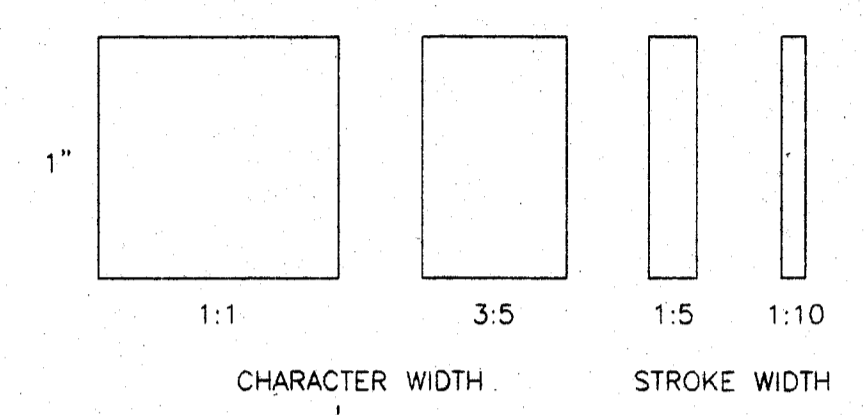
FIXTURE TYPE	ADULT (AGE 12 AND OVER) DIMENSION	ELEMENTARY DIMENSION	KINDERGARTEN & PRE-SCHOOL DIMENSION
TOILET CENTERLINE FROM WALL	18"	15"	12"
TOILET SEAT HEIGHT (TO TOP OF SEAT)	17"-19"	16"	10"-12"
GRAB BAR HEIGHT	33"	33"	10" ABOVE SEAT **
TOILET PAPER IN FRONT OF TOILET	12" MAX.	12" MAX.	6" MAX. **
NAPKIN DISPOSAL IN FRONT OF TOILET	12" MAX.	N/A	N/A
DISPENSER OR MIRROR HEIGHT	40" MAX.	36" MAX.	32" MAX.
LAVATORY/SINK TOP HEIGHT	34" MAX.	29" MAX.	24" MAX.
LAVATORY/SINK KNEE CLEARANCE	27" MIN.	24" MIN.	22" MIN.
URINAL LIP HEIGHT	17" MAX.	15" MAX.	10" MAX.
URINAL FLUSH HANDLE HEIGHT	44" MAX.	36" MAX.	28" MAX.
DRINKING FOUNTAIN BUBBLER HEIGHT	35" MAX.	31" MAX.	24" MAX.
DRINKING FOUNTAIN KNEE CLEARANCE	27" MIN.	24" MIN.	22" MIN.
RAMP/STAIR HANDRAIL HEIGHT	34"-38"	27"	22"

\*\* ABOVE SEAT  
\*\* DEVIATES FROM CODE REQUIREMENTS AND REQUIRES A WRITTEN FINDING OF UNREASONABLE HARDSHIP

- CHARACTER TYPE:**  
CHARACTERS ON SIGNS SHALL BE RAISED 1/32 INCH (0.794) MINIMUM AND SHALL BE SANS SERIF UPPERCASE CHARACTERS ACCOMPANIED BY GRADE 2 BRAILLE (SEE NOTE 5 BELOW)
- CHARACTER SIZE:**  
RAISED CHARACTERS SHALL BE MINIMUM OF 5/8" INCH (15.9mm) AND A MAXIMUM OF 2 INCHES (51mm) HIGH.
- FINISH AND CONTRAST:**  
CONTRAST BETWEEN CHARACTERS, SYMBOLS AND THEIR BACKGROUND MUST BE 70% MINIMUM AND HAVE A NON-GLARE FINISH. 1117B.5.2
- PROPORTIONS:**  
CHARACTERS ON SIGNS SHALL HAVE A WIDTH TO HEIGHT RATIO OF BETWEEN 3:5 AND 1:1 AND STROKE WIDTH TO HEIGHT RATIO OF BETWEEN 1:5 AND 1:10. 1117B.5.3

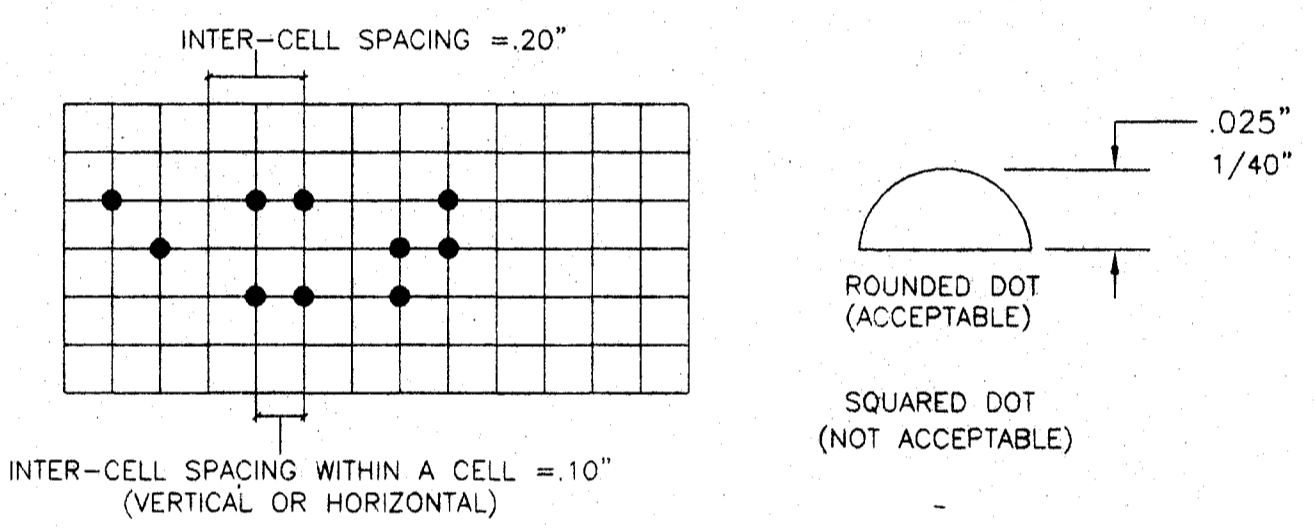
ALL LETTERS MEASURED MUST BE UPPERCASE. AFTER CHOOSING A TYPSTYLE TO TEST, BEGIN BY PRINTING THE LETTERS I, X, AND O, AT 1 INCH HIGH. PLACE THE TEMPLATE'S 1:1 SQUARE OVER THE X OR THE O,WHICHEVER IS NARROWER. IF THE CHARACTER IS NOT WIDER THAN 1 INCH, NOR NARROWER THAN 3:5 RECTANGLE, THE PROPORTIONS ARE CORRECT. USE THE 1:5 RECTANGLE TO DETERMINE IF THE STROKE OF THE I IS TO BROAD, AND THE 1:10 RECTANGLE TO SEE IF IT IS TOO NARROW. IF ALL THE TESTS ARE PASSED, THE TYPSTYLE IS COMPLIANT WITH PROPORTION CODE.

TEMPLATE FOR CHECKING CHARACTER AND STROKE WIDTH TO HEIGHT PROPORTIONS:

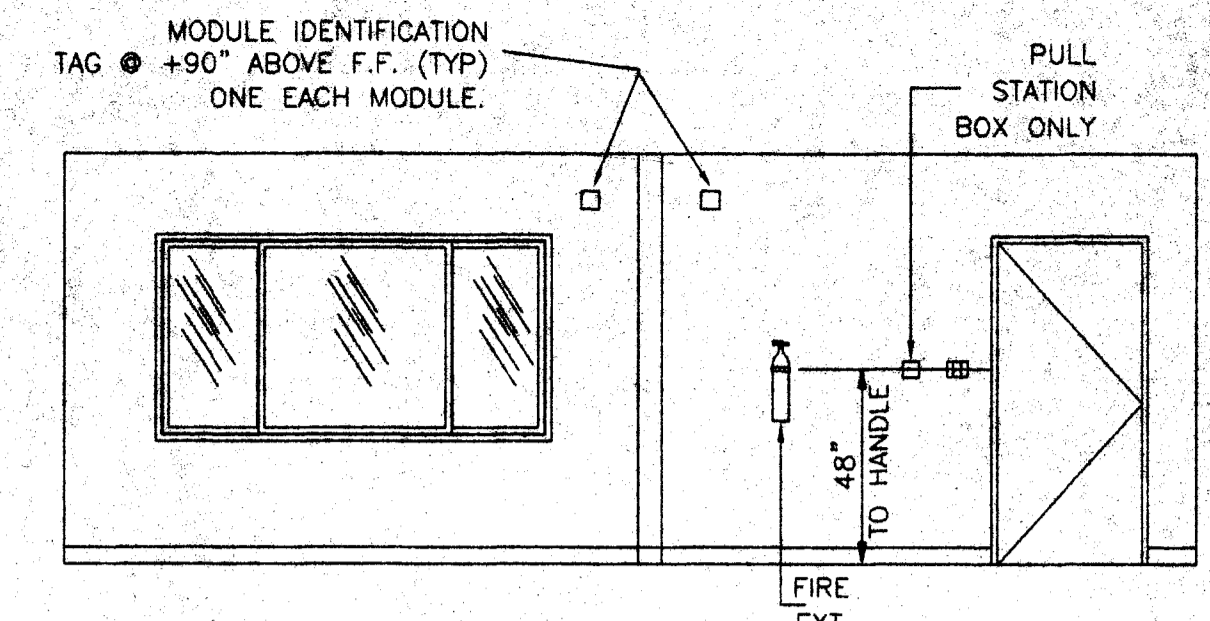


- BRAILLE:**  
CONTRACTED CALIFORNIA GRADE 2 BRAILLE SHALL BE USED WHEREVER BRAILLE IS REQUIRED IN OTHER PORTIONS OF THESE STANDARDS. DOTS SHALL BE 1/10 INCH (2.54mm) ON CENTERS IN CELL WITH 2/10 INCH (5.08mm) SPACE BETWEEN CELLS. MEASURED IN THE SECOND COLUMN OF DOTS IN THE FIRST CELL TO THE FIRST COLUMN OF DOTS IN SECOND CELL. DOTS SHALL BE RAISED A MINIMUM OF 1/40 INCH (0.635mm) ABOVE THE BACKGROUND. 1117B.5.6

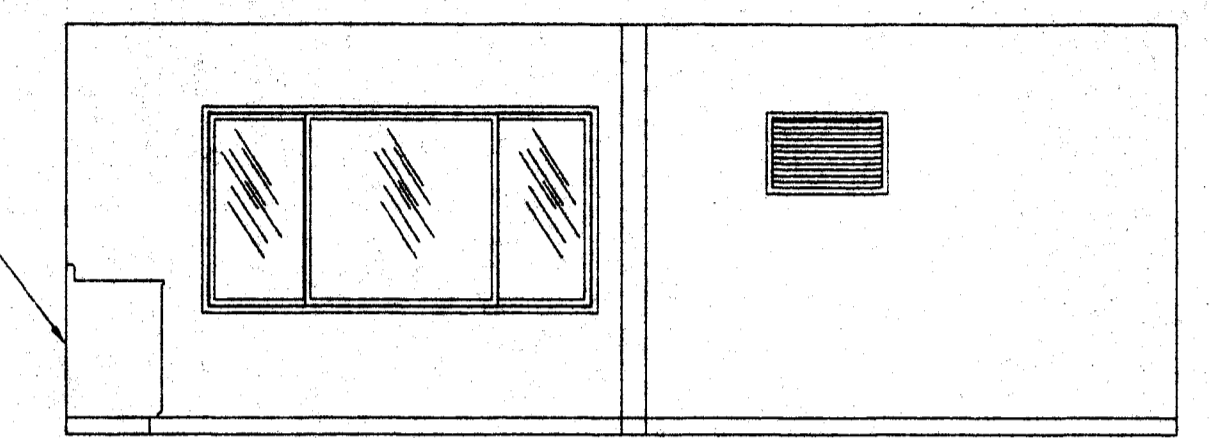
BRAILLE CELL



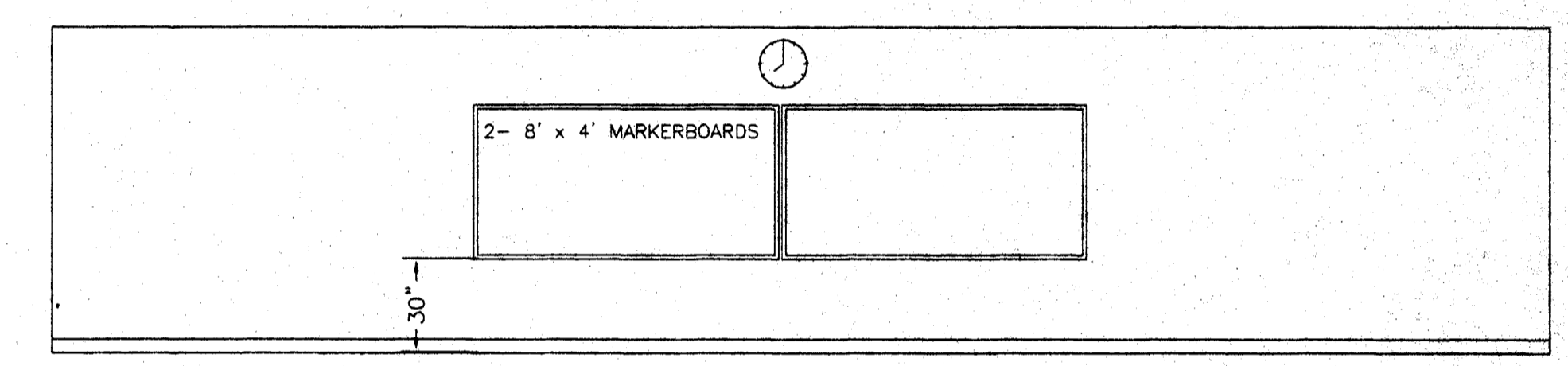
RECOMMENDED ROUNDED OR DOMED CALIFORNIA BRAILLE DOTS, EACH DISTINCT AND SEPARATE. DOTS WITH STRAIGHT SIDES AND FLAT TOPS ARE NOT READABLE FOR MANY USERS



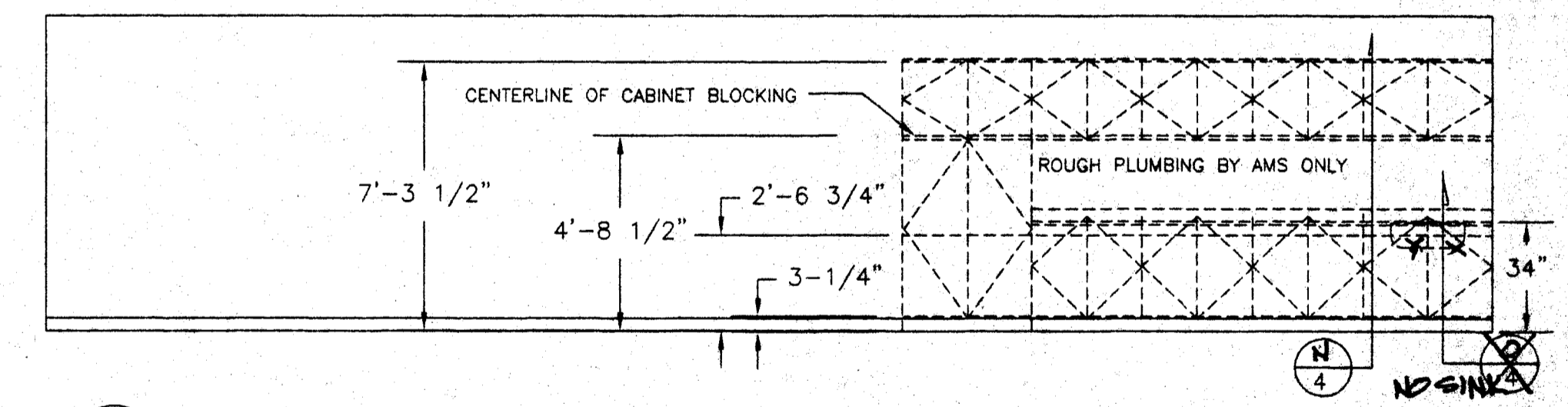
1 INTERIOR ELEVATION  
4 1/4" = 1'-0"



2 INTERIOR ELEVATION  
4 1/4" = 1'-0"



3 INTERIOR ELEVATION  
4 1/4" = 1'-0"



4 INTERIOR ELEVATION  
4 1/4" = 1'-0"

REFER TO SHEET N-1 FOR FLAME SPREAD CLASS OF WALL FINISH MATERIAL

ROOM FINISHES SCHEDULE

ROOM NUMBER	ROOM NAME	FLOOR	FINISHES					REMARKS
			BASE	FRONT	REAR	RIGHT	LEFT	
1	CLASSROOM	D	F	F	F	F	J	8'-6"

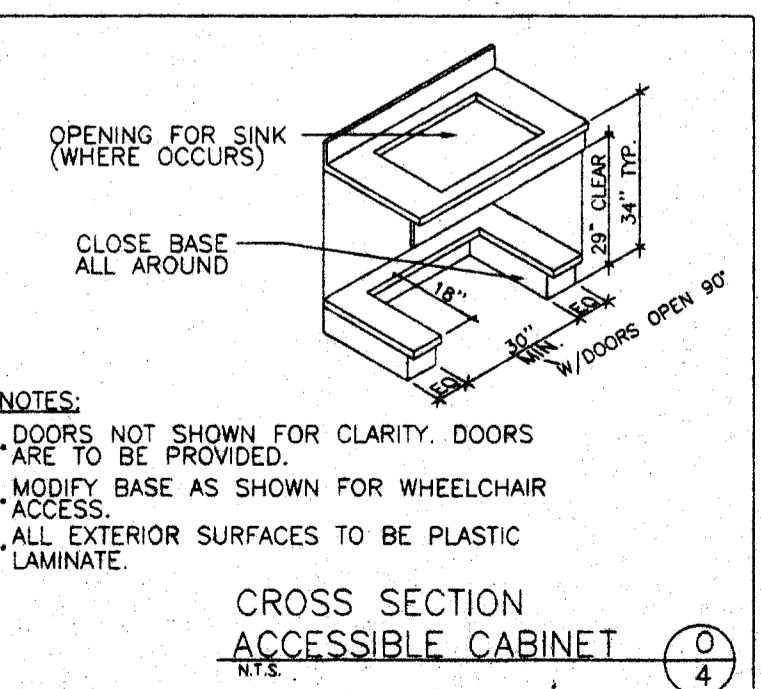
DOOR SCHEDULE SEE SHT. 1 FOR LOCATION

DOOR NO.	FRAME OPENING SIZE	DOORS					FRAMES					NOTE NO.
		MATERIAL	TYPE	FIRE RATING	HARDWARE SET NO.	QUANTITY	MATERIAL	HEAD DETAIL	JAMB DETAIL	SILL DETAIL	LAMP THROAT	
1	3'-0" x 7'-0"	H.M.		N/A	A	1	H.M.	6/1	6/1	4/1	5/1	

- A - CARPET PER STATE OF CALIF SPEC COMPLYING WITH GROUP 1, TYPE A OR TYPE B, CLASS 2, DENSITY 4600, DIRECT GLUE DOWN. CBC 11248.2, 11248.3
- B - VINYL SHEET FLOORING-COEFFICIENT OF FRICTION PER ASTM D 2047, 0.6 MIN.
- C - VCT, ARMSTRONG, STANDARD OR EXCELON
- D - TOP SET BASE, 4" BURKE
- E - TOP SET BASE, 6" BRINGANTINE OR SANDOVAL
- F - WALL FINISH, 1/2" VINYL TACKBOARD CLASS 1 OVER 1/2" GYP BOARD BACKING
- G - 1/2" W.R. GYP BOARD, TAPE, TEXTURE, PAINTED FINISH
- H - 1/2" GYP BOARD, TAPE, TEXTURE, PAINTED FINISH
- I - 3/32" F.R.P. OVER 1/2" W.R. GYP BOARD
- J - ACOUSTICAL LAY IN GRID CEILING PANELS (SEE SPECIFICATIONS)
- K - 1/2" VINYL TACKBOARD CLASS 1 OVER 5/8" TYPE "X" GYP BOARD BACKING

WINDOW SCHEDULE SEE SHT. 1 FOR LOCATION

WINDOW NO.	AMT.	TYPE	WIDTH	HEIGHT	FINISH	GLASS TYPE
(A)	2	SLD.	8'-0"	4'-0"	BRONZE	SOLAR GREY



NOTES:  
DOORS NOT SHOWN FOR CLARITY. DOORS ARE TO BE PROVIDED.  
MODIFY BASE AS SHOWN FOR WHEELCHAIR ACCESS.  
ALL EXTERIOR SURFACES TO BE PLASTIC LAMINATE.

IDENTIFICATION STAMP  
DIR. OF THE STATE ARCHITECT  
APPNO: 108070  
AC: [Signature] P.S. CO. SS. AS  
DATE: JUL 26 2005  
JUL 26 2005  
BASED ON PC# 02-104915

FILE NO. IDENTIFICATION STAMP  
DIR. OF THE STATE ARCHITECT  
OFFICE OF REGULATION SERVICES  
AC: [Signature] FLS. SS.  
DATE

**AMS**  
American Modular Systems Inc.  
787 Spreckels Ave. Manteca, CA 95336  
(209)825-1921 Fax (209)825-7018  
americanmodular.com

REGISTERED ARCHITECT  
STATE OF CALIFORNIA  
No. C 12831  
Date: [Signature]

CUSTOMER:  
BAKERSFIELD CITY SCHOOL DISTRICT

DATE: 11/29/04  
SCALE: NONE  
DRAWN BY: RS  
CHECKED BY:  
CHECKED BY:  
SERIAL NO.

INTERIOR ELEVATIONS AND OPTIONS

REVISIONS

NO	DATE	DESCRIPTION	NO	DATE	DESCRIPTION
△			△		
△			△		
△			△		

PROJECT No.  
SHEET No.  
4

24 X 40  
RELOCATABLE  
CLASSROOMS