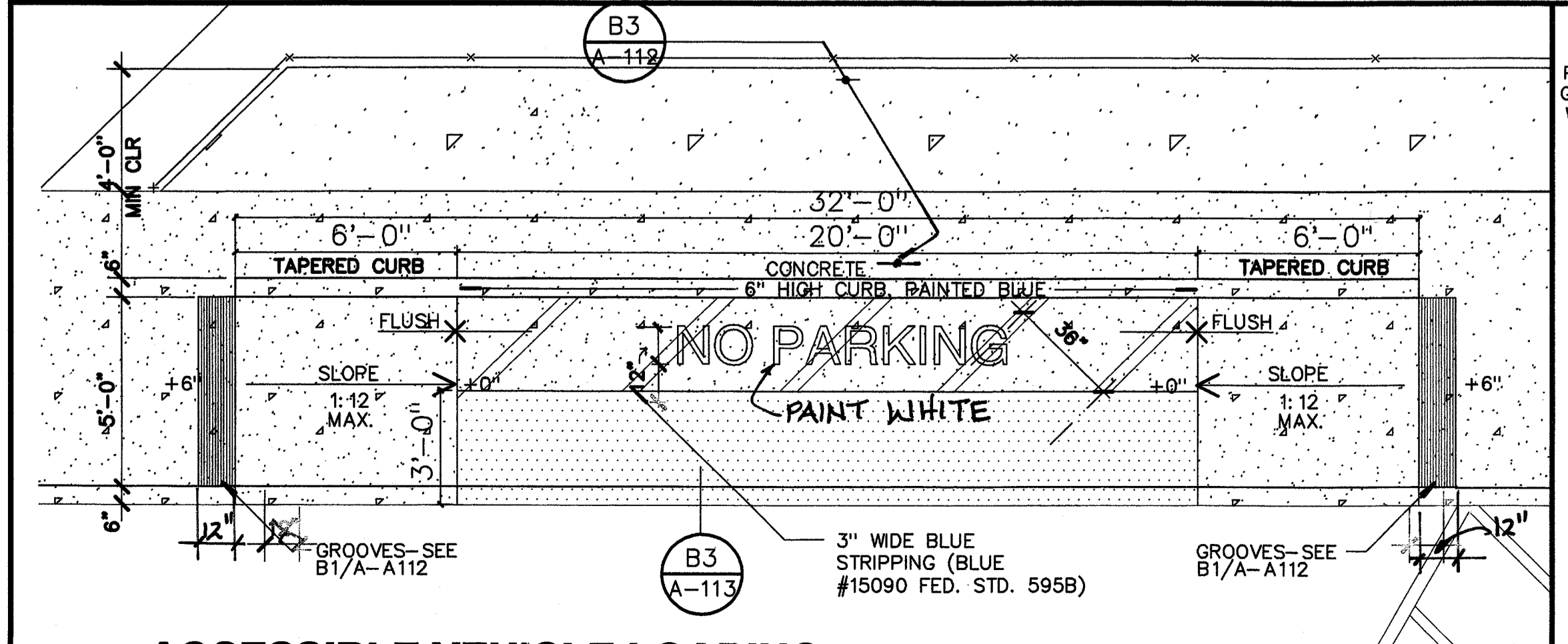
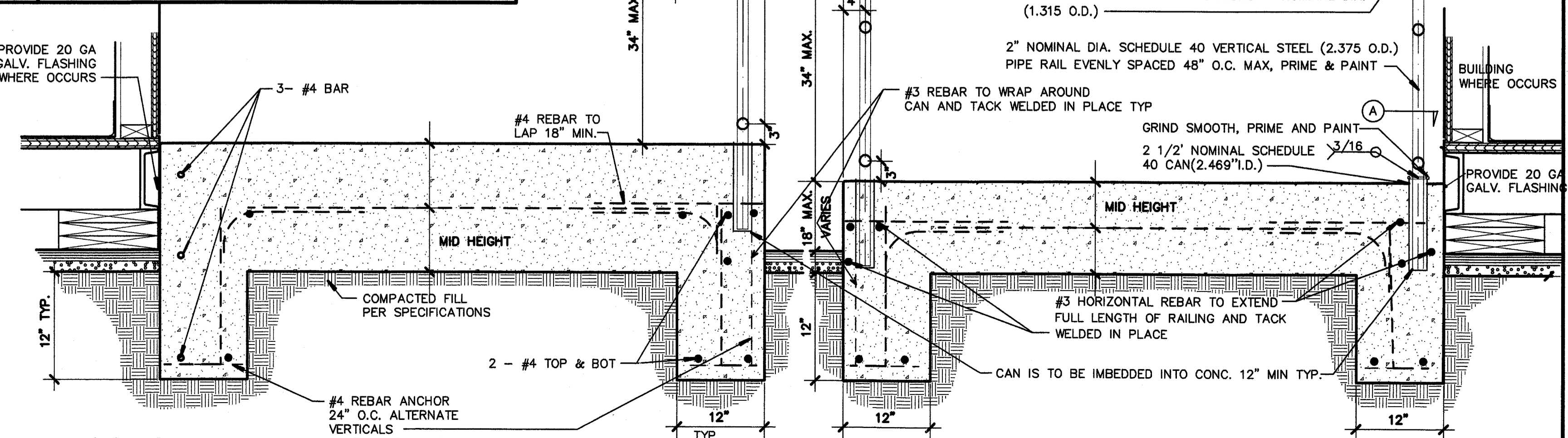


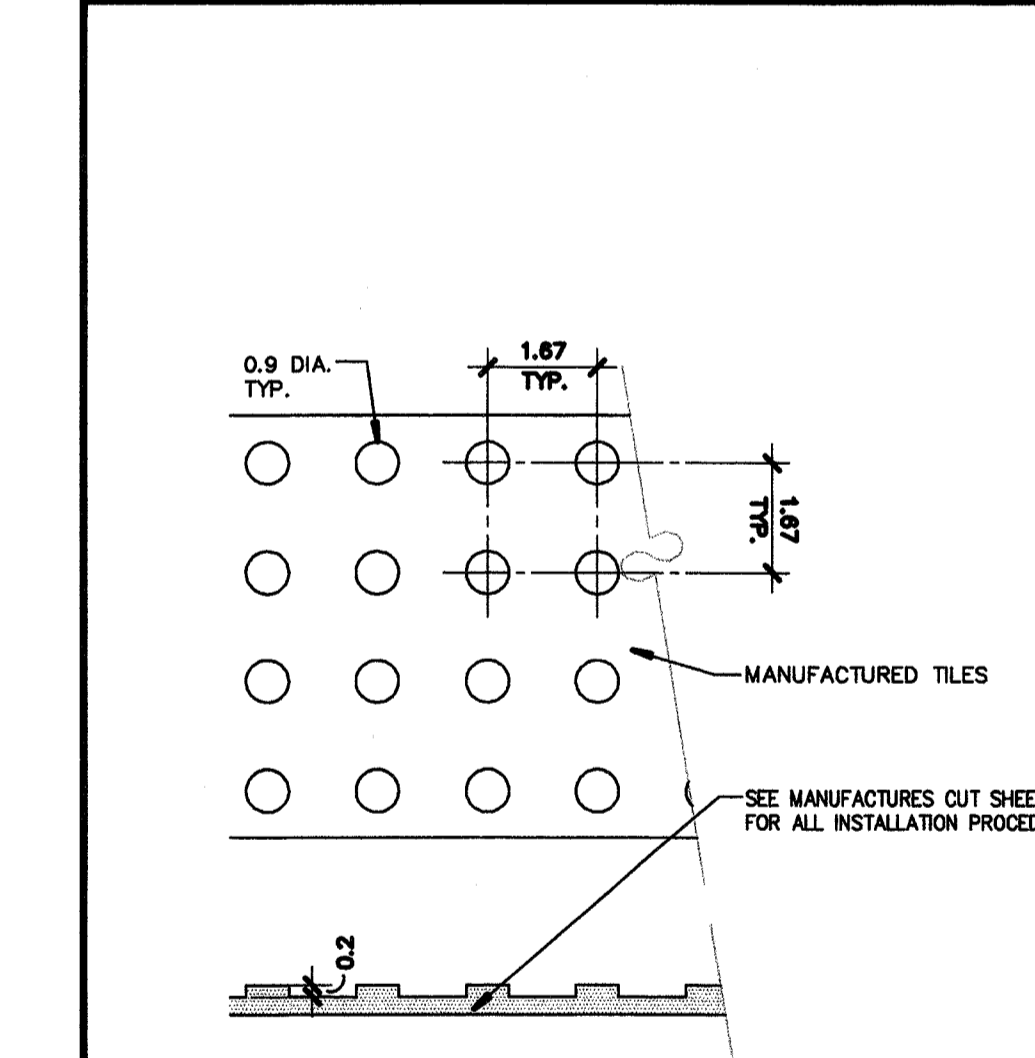
**B1 PARTIAL SITE PLAN CONCRETE RAMPS & WALKS**  
 SCALE: 1"=20"  
 EXISTING BUILDINGS  
 NEW PORTABLE CLASSROOMS



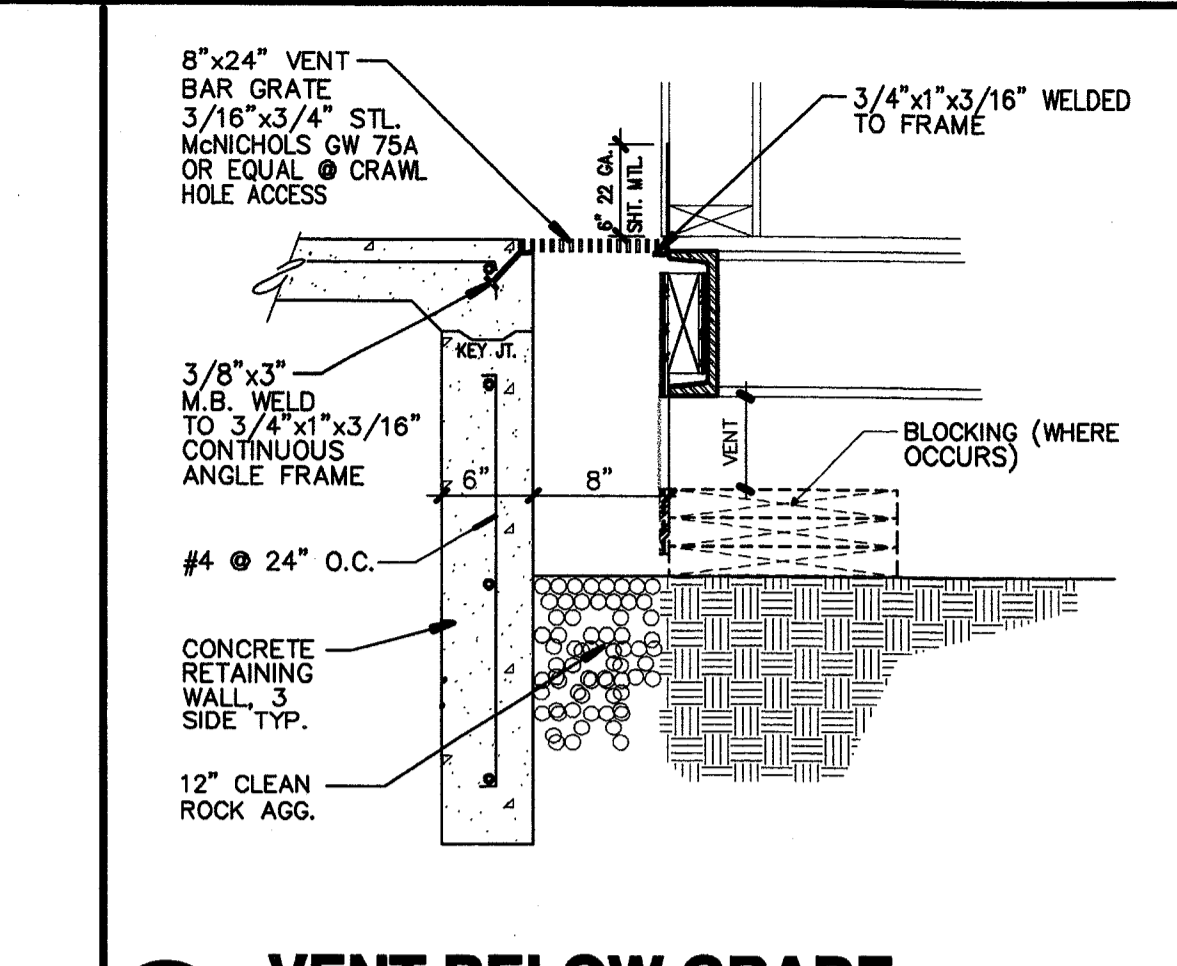
**A1 ACCESSIBLE VEHICLE LOADING**  
 SCALE: 1"=1'-0"



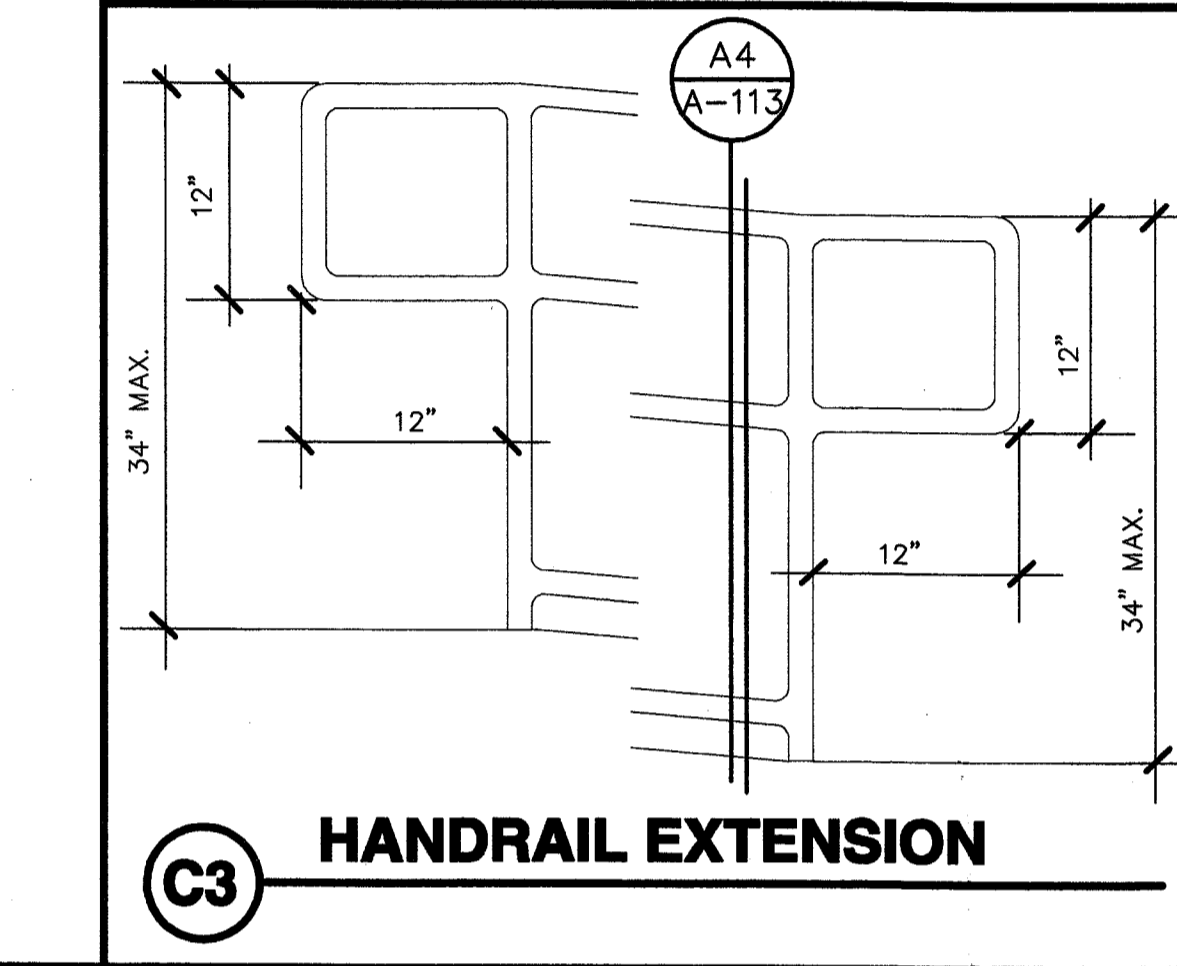
**A3 CONCRETE WALK SECTION** SCALE: 1"=1'-0"  
**A4 CONCRETE RAMP SECTION** SCALE: 1"=1'-0"



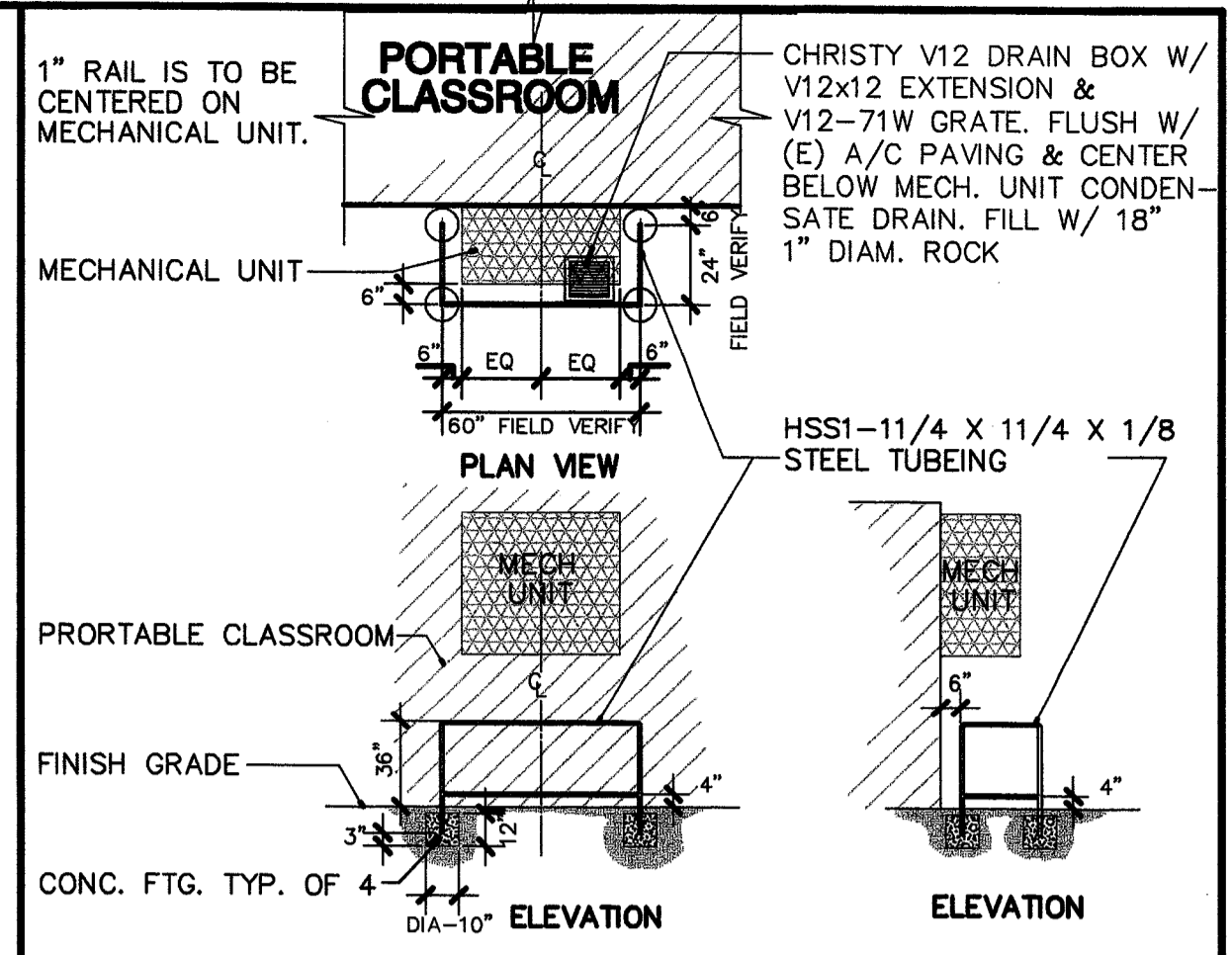
**B3 TRUNCATED DONES**



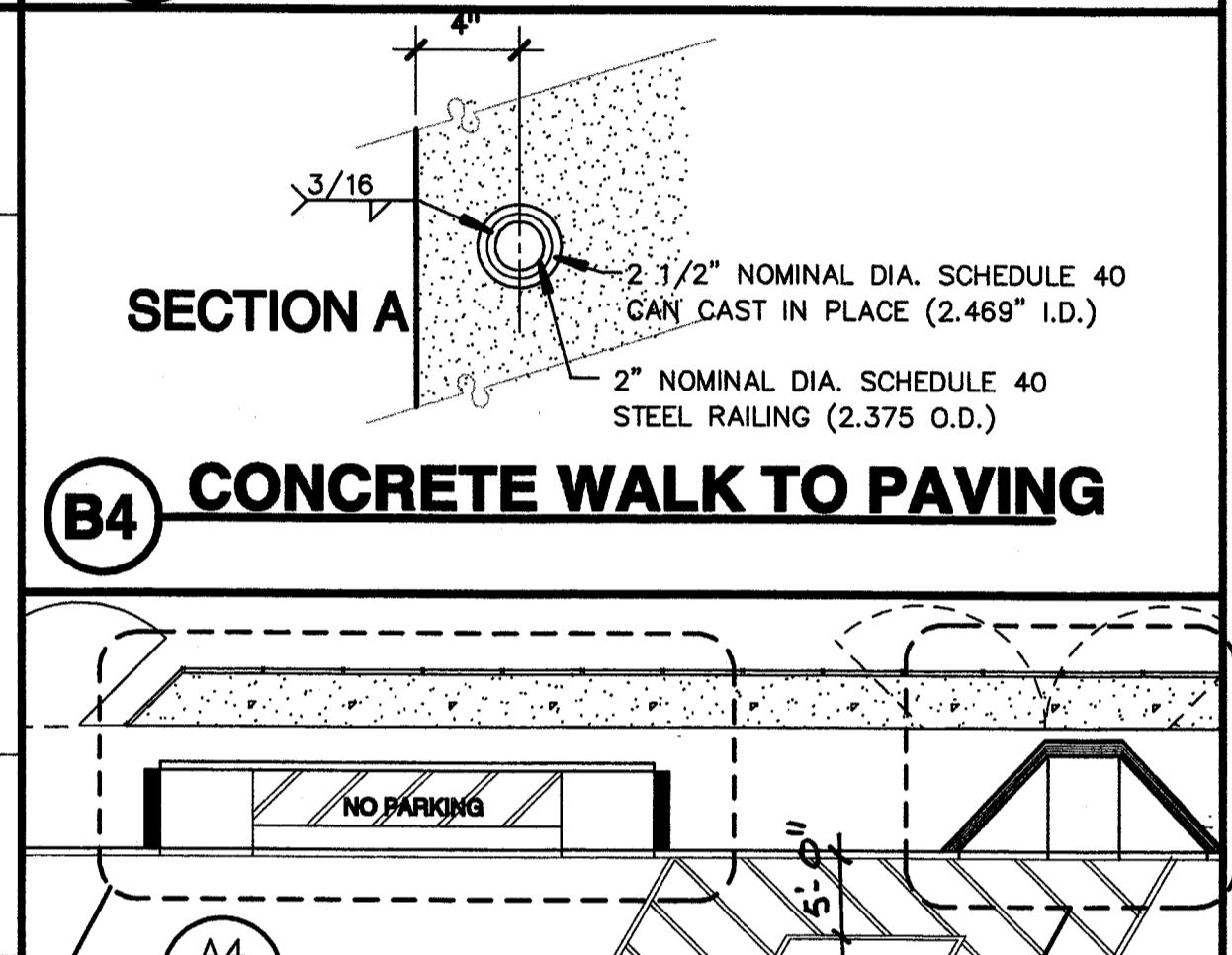
**D3 VENT BELOW GRADE**



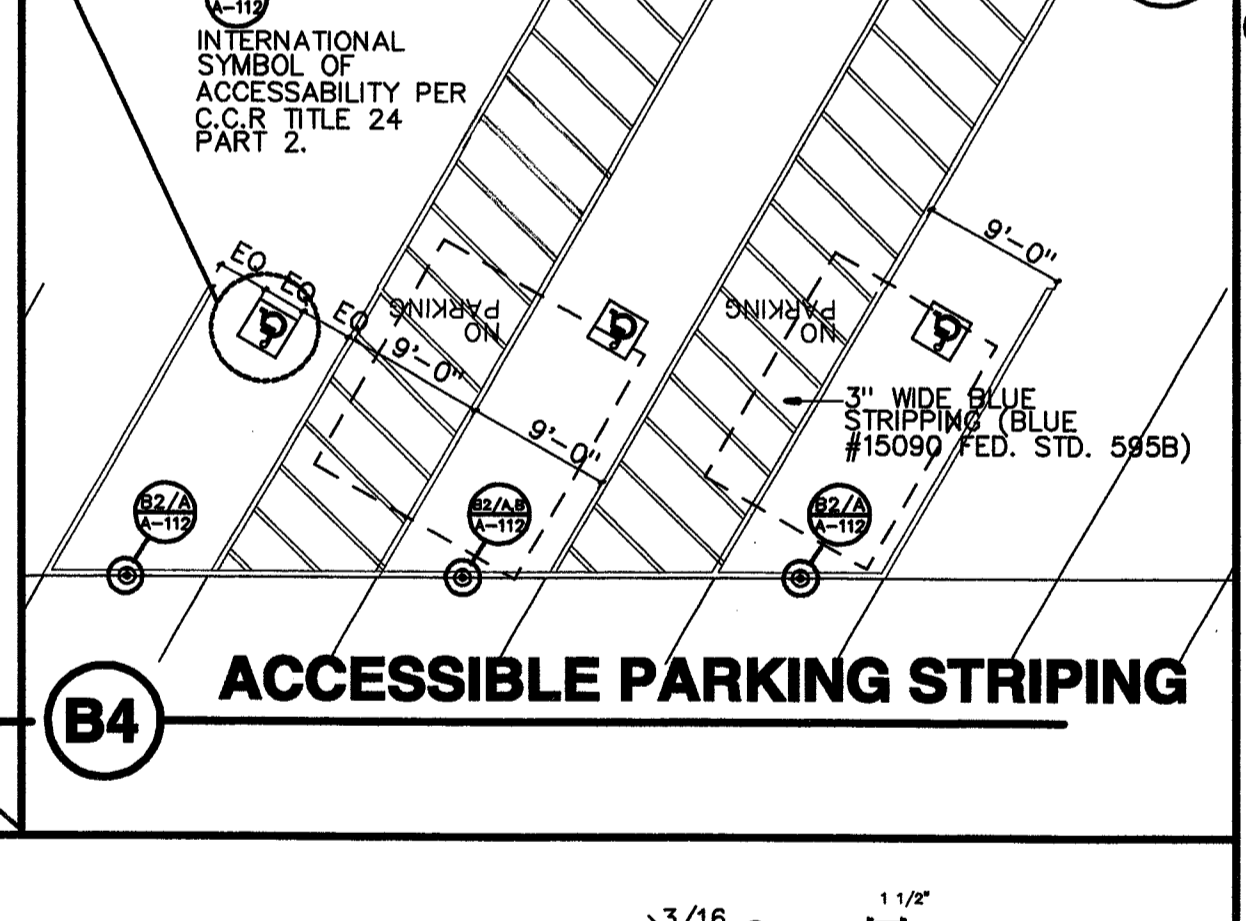
**C3 HANDRAIL EXTENSION**



**D4 SAFTY RAIL**

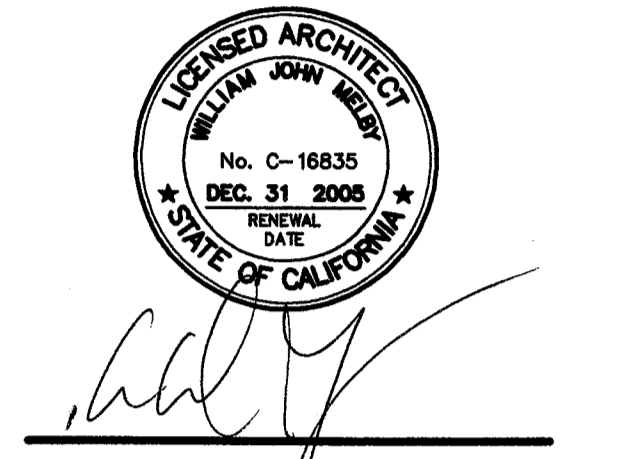


**B4 CONCRETE WALK TO PAVING**



**B4 ACCESSIBLE PARKING STRIPING**

**ORDIZ MELBY ARCHITECTS, INC.**  
 5500 MING AVENUE SUITE 280  
 BAKERSFIELD, CALIFORNIA 93309  
 TELEPHONE (861) 832-5258  
 FACSIMILE (861) 832-4291



DANNY E. ORDIZ, AIA ARCHITECT C-14,728  
 WILLIAM J. MELBY, AIA ARCHITECT C-16,835

IDENTIFICATION STAMP  
 DIVISION OF STATE ARCHITECT  
 OFFICE OF REGULATION SERVICES

APP 03-108679  
 FILE#: #15-6

AC [Signature] FLS [Signature] SS [Signature]  
 DATE JUL 26 2005

PTN: 63321-50  
 SITE IMPROVEMENTS  
 PORTABLE CLASSROOMS  
 AT  
 CHIPMAN JUNIOR HIGH SCHOOL

BAKERSFIELD  
 CITY SCHOOL DISTRICT

EISSLER STREET  
 BAKERSFIELD  
 CALIFORNIA  
 93306

MARK	DATE	DESCRIPTION
SD		
CD		

JOB NUMBER: 2004771  
 CAD DRAWING FILE: A-113.AEC  
 DRAWN BY: JAH  
 CHECKED BY: EW

CHECK AND VERIFY ALL DIMENSIONS BEFORE PROCEEDING WITH THE WORK. REPORT DISCREPANCIES TO THE ARCHITECT.

THE DRAWINGS, IDEAS, AND DESIGNS REPRESENTED ON THIS SHEET ARE THE PROPERTY OF THE ARCHITECT.

COPYRIGHT  
 ORDIZ-MELBY ARCHITECTS, INC. 2004

SHEET TITLE

**ENLARGED SITE PLAN AND DETAILS**

SHEET IDENTIFICATION NUMBER  
**A-113**  
 SHEET 03 OF 03

PLT. TIME: 6:29 PM  
 PLOT DATE: 1-16-2004  
 PLOT NAME: G:\JOBS\750-799\2004771\DRAWINGS\CDVA-113.AEC  
 PLOT SCALE: 1/4" = 1'-0"