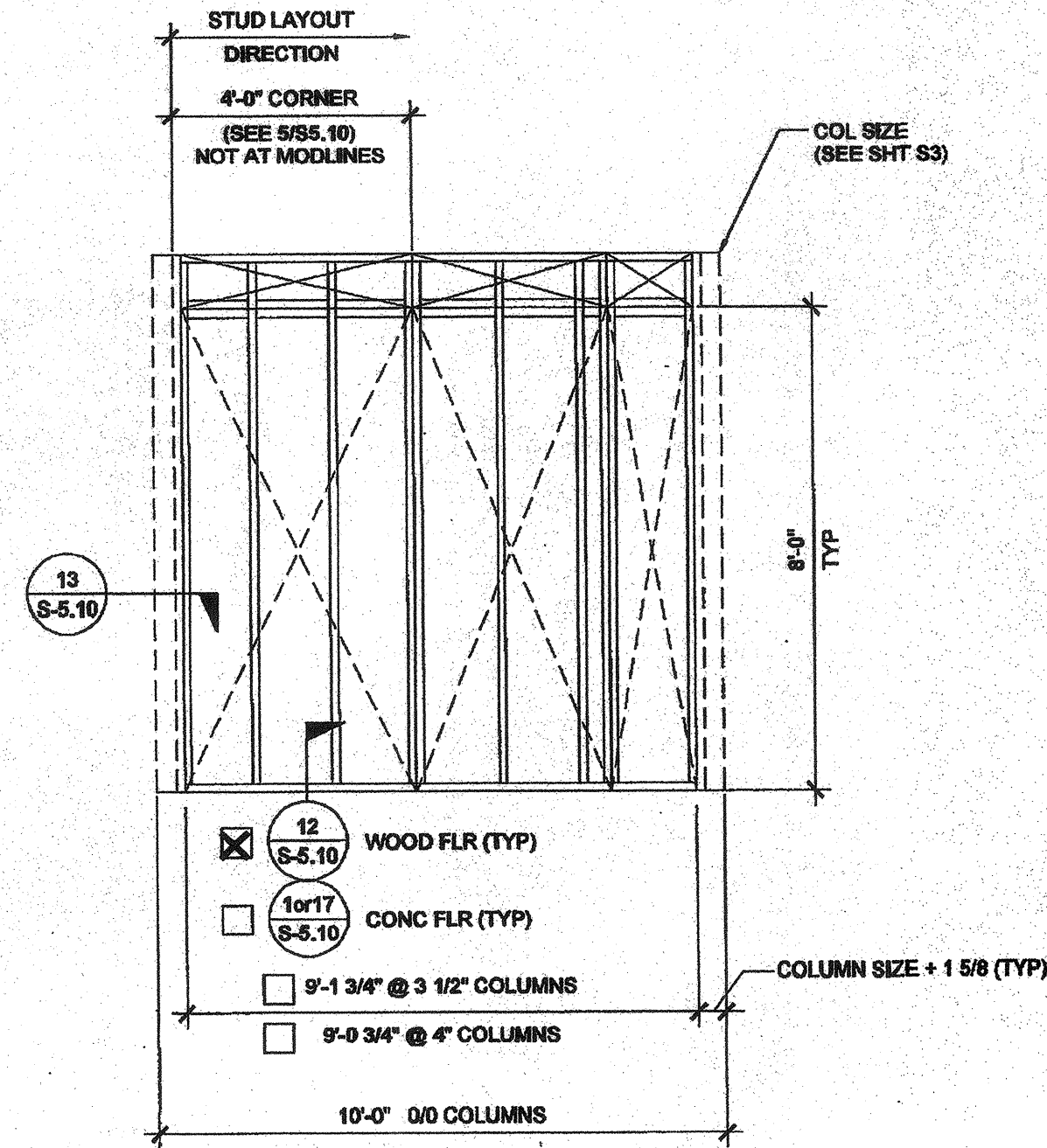
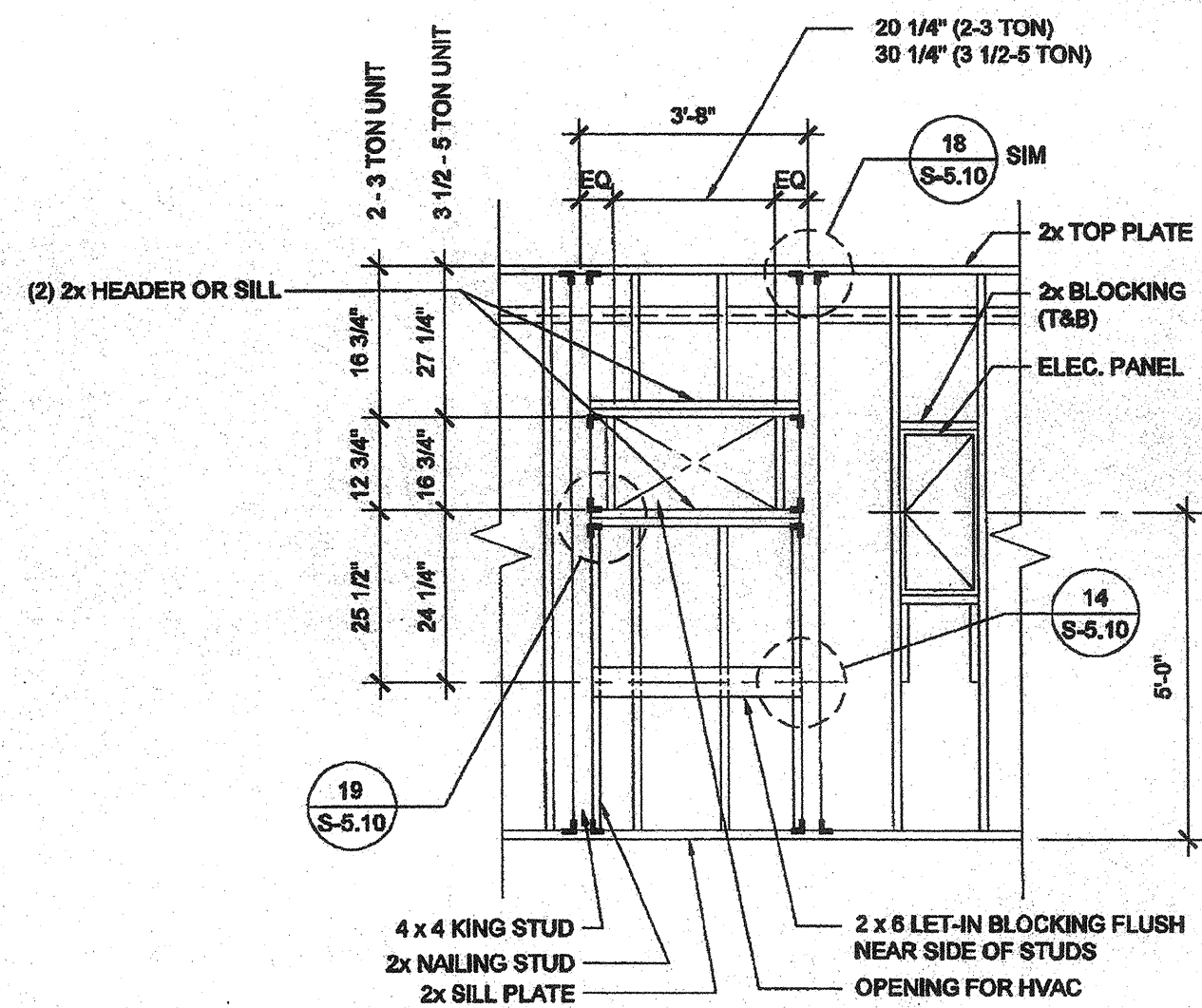


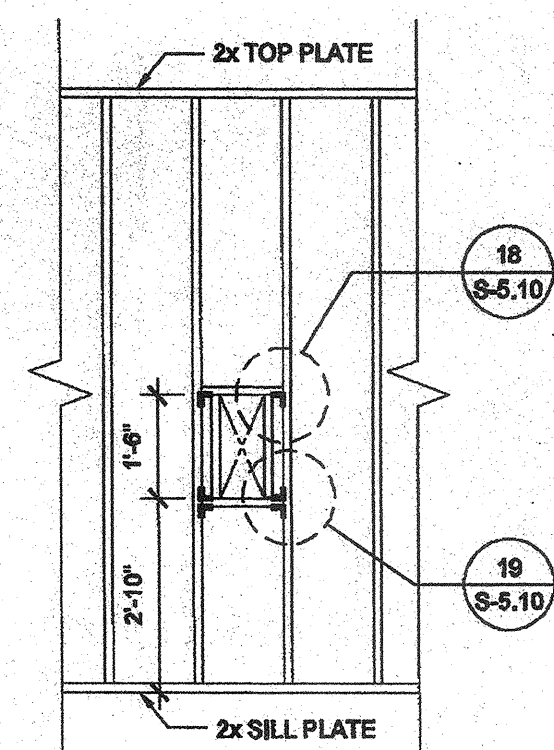
TYPICAL SIDE WALL



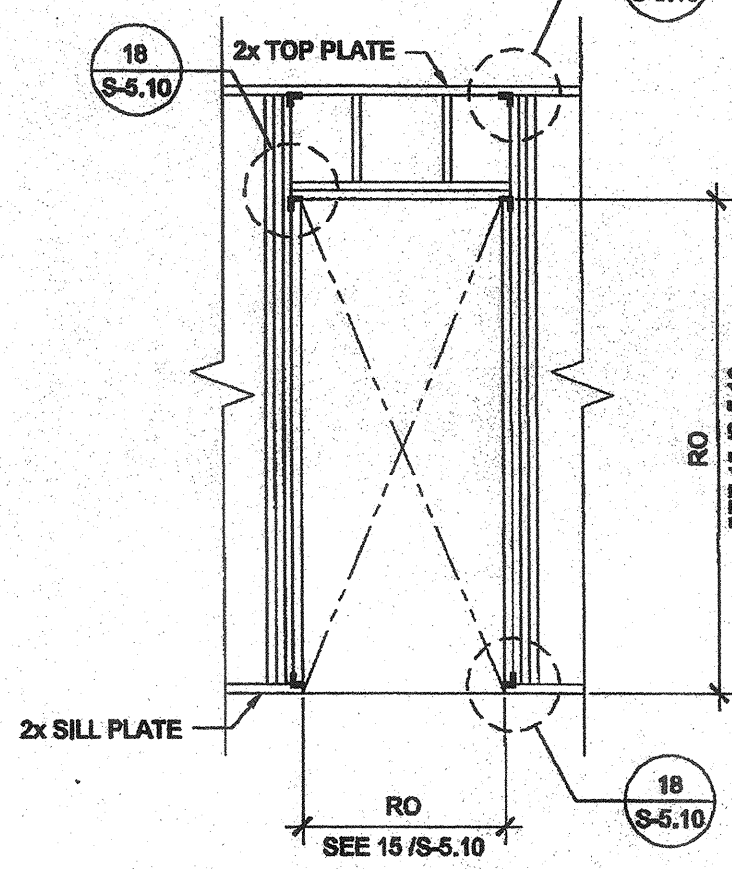
TYPICAL END WALL



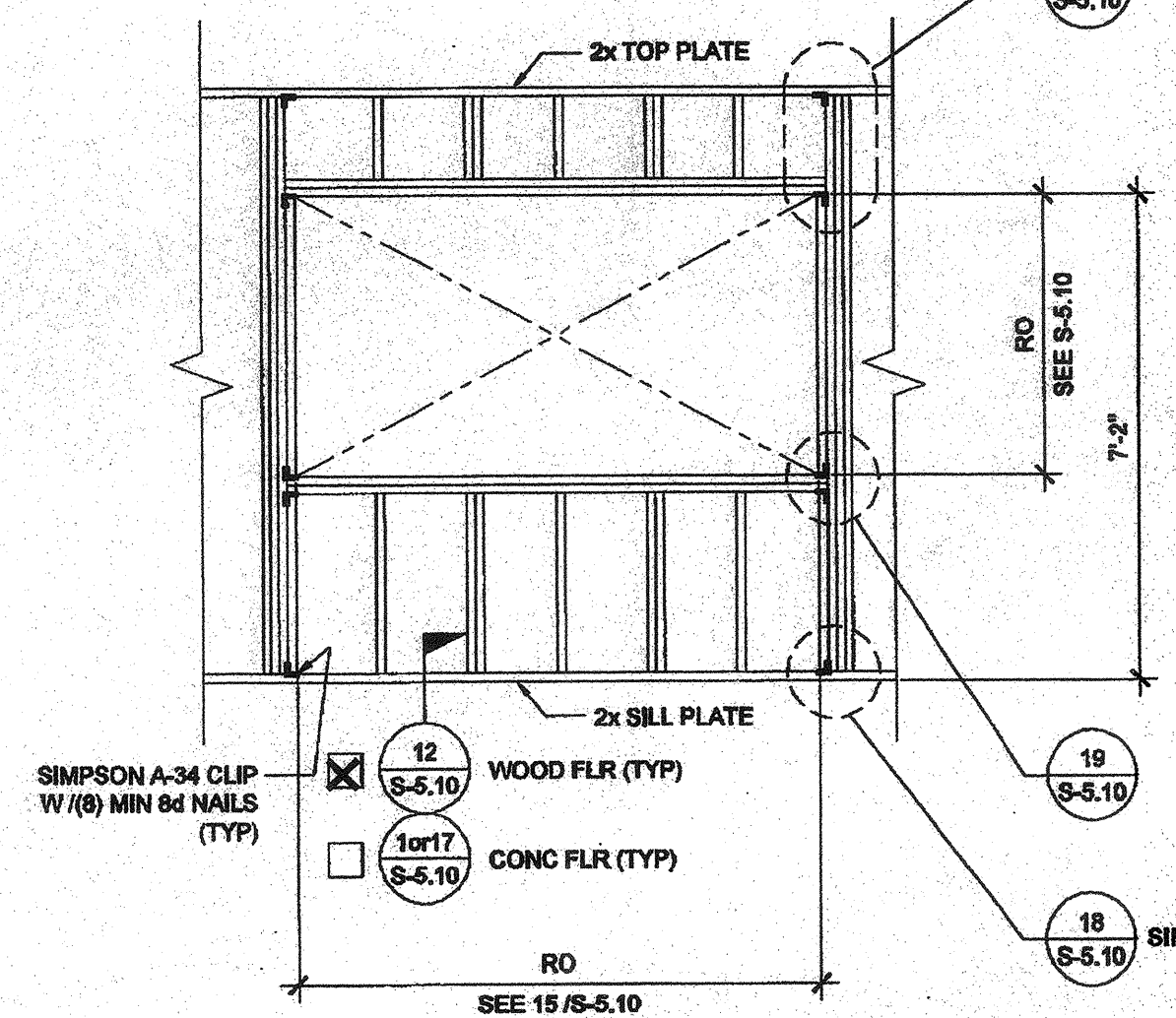
TYPICAL HVAC



FIRE EXTINGUISHER CABINET BLOCKOUT



TYPICAL DOOR



TYPICAL WINDOW

NOTES

WALL HEIGHT SCHEDULE

COLUMN HEIGHT	9'-0"	9'-6"	10'-0"	10'-6"
CONCRETE FLOOR	8'-11 7/8"	9'-5 7/8"	9'-11 7/8"	10'-5 7/8"
WOOD FLOOR	8'-10 3/4"	9'-4 3/4"	9'-10 3/4"	10'-4 3/4"

NOTE:
IF PARAPET USED IS HIGHER THAN 18" END WALLS MUST BE 2x6 @ 24" O.C.

THESE DRAWINGS AND ALL MATERIAL CONTAINED HEREIN ARE THE PROPERTY OF SILVERCREEK INDUSTRIES, INC (SCI Inc) AND SHALL NOT BE REPRODUCED, COPIED OR OTHERWISE DISPOSED OF DIRECTLY OR INDIRECTLY AND SHALL NOT BE USED IN WHOLE OR IN PART TO ASSIST IN THE MAKING OF OR FOR THE PURPOSE OF FURNISHING ANY INFORMATION FOR THE MAKING OF DRAWINGS, PRINTS, APPARATUS OR PARTS THEREOF WITHOUT THE FULL KNOWLEDGE AND WRITTEN CONSENT OF SCI Inc. ALL PATENTABLE MATERIAL CONTAINED HEREIN AND ORIGINATING WITH SCI Inc SHALL BE THE PROPERTY OF SCI Inc.

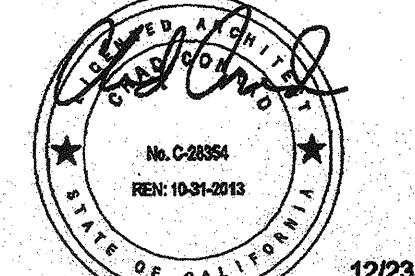
SILVER CREEK INDUSTRIES, INC.



195 EAST MORGAN PERRIS, CALIFORNIA 92571
PHONE: 951-943-5393 FAX: 951-943-2211

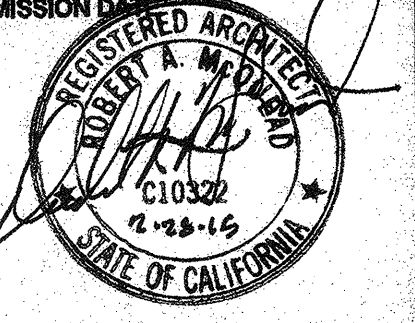
PROJECT NAME:
CLASS LEASING CLASSROOMS BLDG'S

SHEET TITLE:
FRAMING ELEVATIONS WOOD STUDS

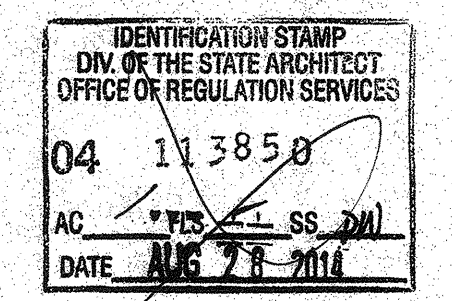


12/23/2011

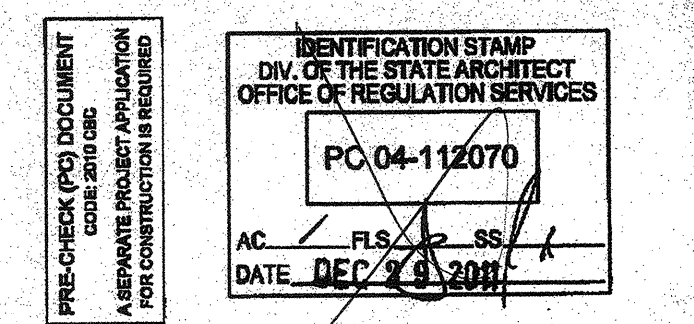
ARCHITECT OF RECORD SUBMISSION



PROJECT SPECIFIC STATE AGENCY APPROVAL



ORIGINAL PC STATE AGENCY APPROVAL



REVISIONS

IDENTIFICATION STAMP
DIV. OF THE STATE ARCHITECT
APP03 117549
AC W FLS SS TN
Date OCT 11 2016

IDENTIFICATION STAMP
DIV. OF THE STATE ARCHITECT
APP03 116979
AC W FLS SS TN
Date 4-13-16

SILVER CREEK INDUSTRIES
30' x 32' PC

PROJECT NO:
DRAWN BY:
SCALE: AS NOTED
DATE: 6-17-11
P.C. SHEET NUMBER
S-5.00