

THESE DRAWINGS AND ALL MATERIAL CONTAINED HEREIN ARE THE PROPERTY OF SILVERCREEK INDUSTRIES, INC. (SCI Inc) AND SHALL NOT BE REPRODUCED, COPIED OR OTHERWISE DISPOSED OF DIRECTLY OR INDIRECTLY AND SHALL NOT BE USED IN WHOLE OR IN PART TO ASSIST IN THE MAKING OF OR FOR THE PURPOSE OF FURNISHING ANY INFORMATION FOR THE MAKING OF DRAWINGS, PRINTS, APPARATUS OR PARTS THEREOF WITHOUT THE FULL KNOWLEDGE AND WRITTEN CONSENT OF SCI Inc. ALL PATENTABLE MATERIAL CONTAINED HEREIN AND ORIGINATING WITH SCI Inc SHALL BE THE PROPERTY OF SCI Inc.

SILVER CREEK INDUSTRIES, INC.



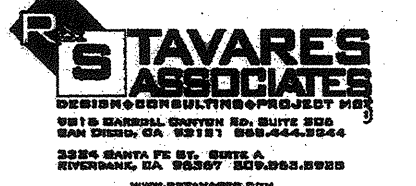
"BUILDING FOR THE NEXT GENERATION"

195 EAST MORGAN PERRIS, CALIFORNIA 92571
PHONE: 951-943-5393 FAX: 951-943-2211

PROJECT NAME:
CLASS LEASING CLASSROOMS BLDG'S

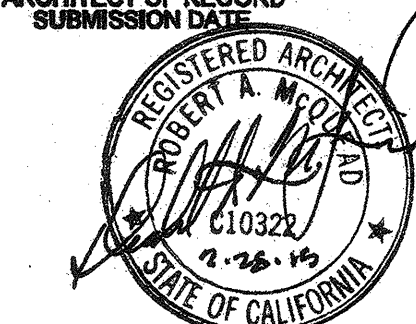
SHEET TITLE:
SCHEDULES

TAVARES ASSOCIATES

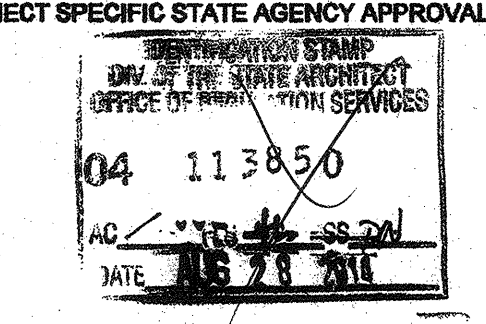


REGISTERED ARCHITECT
No. C-28554
Exp. 10-31-2013
12/23/2011

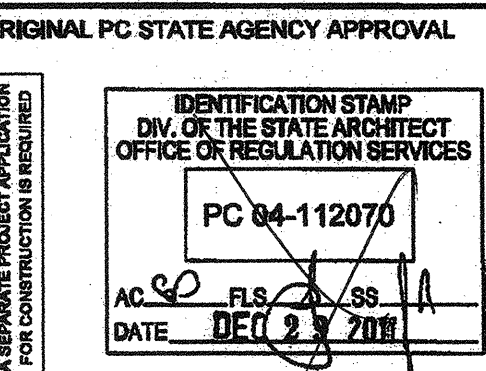
ARCHITECT OF RECORD
SUBMISSION DATE



PROJECT SPECIFIC STATE AGENCY APPROVAL



ORIGINAL PC STATE AGENCY APPROVAL



REVISIONS

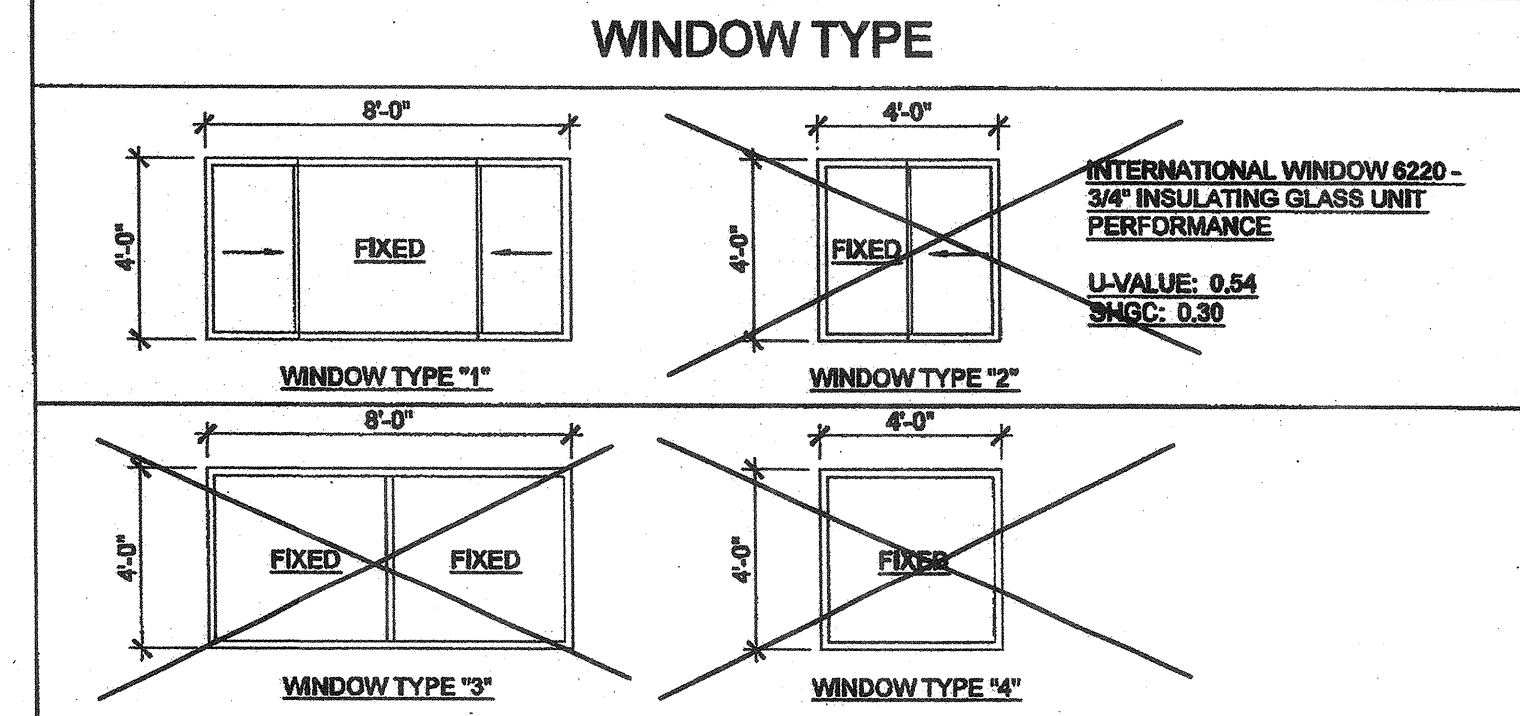
SILVER CREEK INDUSTRIES
30' x 32' PC

PROJECT NO:
DRAWN BY:
SCALE: AS NOTED
DATE: 6-17-11
P.C. SHEET NUMBER
A-0.2

WINDOW SCHEDULE									
WINDOW NO.	QTY	TYPE	WIDTH	HEIGHT	FUNCTION	FRAME MATERIAL	GLASS MATERIAL	WALL THICKNESS	NOTES
A	3	1	8'-0"	4'-0"	XOX	ANOD	DP		
B					XO	ANOD	DP		
C					FIXED	FRW	FRG		16 MINUTE ASSEMBLY
D					FIXED	FRW	FRG		16 MINUTE ASSEMBLY

WINDOW FINISH

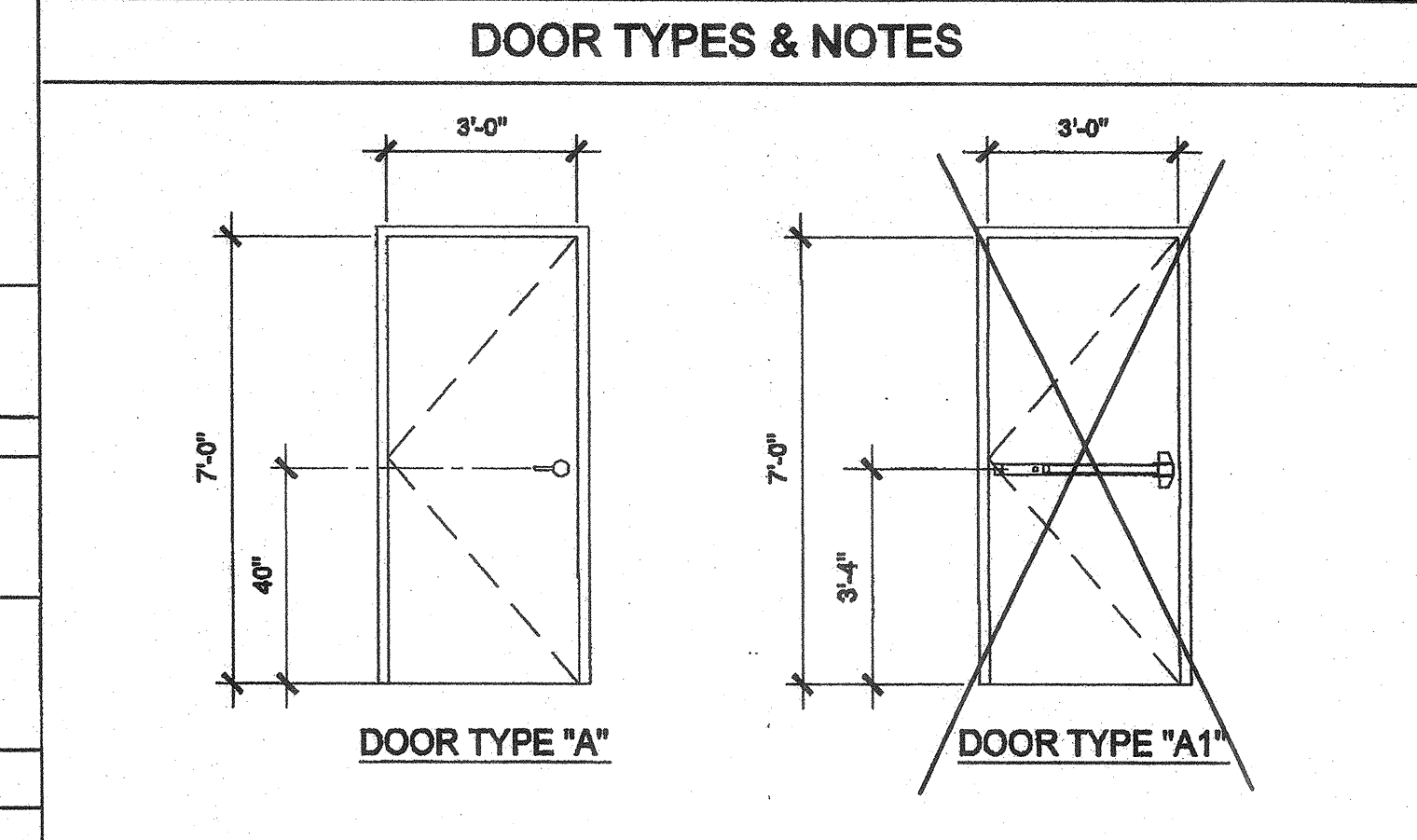
ANOD: CLEAR ANODIZED ALUMINUM FRAME DP: 3/16" MINIMUM DUAL PANE TEMPERED GLASS OF SOLAR
BRONZ: BRONZE ANODIZED ALUMINUM FRAME GRAY - 3/16" ENERGYSHIELD WITH A LIGHT TRANSMISSION
PAINT: PAINTED FRAME FACTOR OF 40%, ALL OPERABLE SASH SHALL HAVE
WF: 18GA WELDED FRAME SCREENS.
FRW: FIRE RATED WINDOW FRAME: MIN 0.048" THICK WELDED FRAME
FRG: FIRE RATED GLAZING: 1/4" WIRED GLASS, LABELED TO MEET THE REQUIREMENTS FOR A 3/4 HOUR FIRE WINDOW ASSEMBLY PER CBC SECTION 716.5
* TO BE DETERMINED BY CODE ENFORCEMENT SITE SPECIFIC SUBMITTAL.



DOOR SCHEDULE									
DOOR NO.	WIDTH	HEIGHT	DOOR TYPE	QTY	DOOR MAT/FIN	FRAME MAT/FIN	HARDWARE SET	WALL THICKNESS	NOTES
1	3'-0"	7'-0"	A		HM	KD	HW-1	5 1/4"	
2	3'-0"	7'-0"	A1		HM	KD	HW-2	5 3/8"	
3	3'-0"	7'-0"	A		SC	KD	HW-3	5 1/2"	
4	3'-0"	7'-0"	A		HM	KD	HW-4	4 7/8"	
5	3'-0"	7'-0"	A		HM	KD	HW-5	4 7/8"	NO CLOSER REQD

DOOR MATERIAL AND FINISH ABBREVIATIONS

HM: 18GA HOLLOW METAL KD: KNOCK DOWN FRAME
WF: 18GA WELDED FRAME SCL: SOLID CORE WOOD LEGACY
AL: ALUMINUM HC: HOLLOW CORE WOOD
SST: STAINLESS STEEL PT: PAINTED



- DOOR HANDLE FOR LOCKSETS AND PANIC HARDWARE TO BE CENTERED AT 40" AFF. HARDWARE TO BE OPENED FROM THE INSIDE WITHOUT ANY SPECIAL KNOWLEDGE OR EFFORT. LEVERS TO RETURN TO WITHIN 1/2" OF DOOR.
- ALL DOORS SHALL BE 1 3/4" THICK U.L.O.
- CLOSER SHALL BE SET FOR MAXIMUM OPENING PRESSURE OF 5 LBS AT EXTERIOR AND INTERIOR DOORS.
- PANIC HARDWARE IS REQUIRED TO BE INSTALLED WHEN THE CONFIGURATION OF ANY ROOM PROVIDES AN OCCUPANT LOAD OF 50 OR GREATER. CBC 1008.1.10
- ALL HARDWARE SHALL COMPLY WITH SILVER CREEK'S SPECIFICATIONS ON THIS SHEET AND CBC SECTIONS 1133B.2 AND 1008
- DOOR CLOSER SHALL BE ADJUSTED TO SO THAT FROM AN OPEN POSITION OF 70°, THE DOOR WILL TAKE AT LEAST 3 SECONDS TO MOVE TO A POINT 3" FROM THE LATCH, MEASURED TO THE LANDING SIDE OF THE DOOR 1133 B.2.5.1
- PANIC AND FIRE EXIT HARDWARE. WHERE PANIC AND FIRE EXIT HARDWARE IS INSTALLED, IT SHALL COMPLY WITH THE FOLLOWING:
- THE ACTUATING PORTION OF THE RELEASING DEVICE SHALL EXTEND AT LEAST ONE-HALF OF THE DOOR LEAF WIDTH.
- THE MAXIMUM UNLATCHING FORCE SHALL NOT EXCEED 5 LBS PER 1117B.6.4.
APPROVED BY AUTHORITY W/ JURISDICTION, PANIC HARDWARE SHALL COMPLY WITH CBC SECTION 1008.1.10
- THE FIRE PROTECTION FOR EXTERIOR WALL IS DETERMINED BASED UPON THE FIRE SEPARATION DISTANCE IN WHICH THE WALL IS LOCATED. SEE CBC TABLE 705.8 OR TABLE 602

FINISH SCHEDULE									
ROOM NAME	FLOORING	WALL FINISH	CEILING	NOTES					
	FLOOR	FRONT	LEFT	RIGHT	CEILING HT				
CLASSROOM 101	CARP 4" TS	TACK	TACK	TACK	CP	8'-6"			
TOILET 102	SV 4" TS	FRP	FRP	FRP	CP	8'-6"			
BOYS 103	SV 6" TS	FRP	FRP	FRP	GBP	8'-0"			
BOYS 104	SV 6" TS	FRP	FRP	FRP	GBP	8'-0"			
STAFF 105	SV 6" TS	FRP	FRP	FRP	GBP	8'-0"			

FLOOR, WALL, CEILING MATERIALS

FLOORING
CARP: CARPET PER STATE OF CALIFORNIA SPECIFICATIONS COMPLYING WITH GROUP 1: TYPE "A" OR TYPE "B", CLASS 2, DENSITY 4600, DIRECT GLUE DOWN
SV: SHEET VINYL FLOORING
VCT: VINYL COMPOSITION TILE
BASE: 4" TOP SET BASE
6" TS: 6" TOP SET BASE
SC: 6" SELF-COVE BASE

WALLS
TACK: 1/2" VINYL TACKBOARD CLASS 1 OVER 1/2" GYPSUM BOARD BACKING
FRP: 1/8" FIBER REINFORCED PANEL OVER 1/2" WATER RESISTANT GYPSUM BOARD
GYP: 1/2" GYPSUM BOARD; TAPE; TEXTURE; PAINTED FINISH
PLY: 1/2" PLYWOOD FINISH
NF: NO FINISH

CEILING
CP: ACOUSTICAL LAY IN GRID CEILING PANELS (SEE SPECIFICATION NOTES ON REFLECTED CEILING PLAN)
HC: 5/8" GYPSUM BOARD; TAPE; TEXTURE; PAINTED FINISH (HARD LID CEILING)
GBP: 1/2" GYPSUM BOARD WASHABLE PANELS (PAINTED)

- FINISH NOTES**
- ALL FINISHES SHALL COMPLY WITH CBC, CFC AND TITLE 19 CCR.
 - PREPARATION FOR SUB-FLOOR TO ACCEPT FINISH FLOORING IS BY FLOORING CONTRACTOR. PLYWOOD SUB-FLOOR IS 2.4.1. PLYWOOD. OUTER PLYWOOD IS PLUGGED AND TOUCH SANDED. ANY DEFORMITIES DUE TO STANDARD CONSTRUCTION PRACTICES SHALL BE FILLED AND SANDED BY FLOORING CONTRACTOR. THE JOINT AT THE MIDLINE SHALL NOT BE LARGER THAN 1/8" AND SHALL BE FILLED AND SANDED BY FLOORING CONTRACTOR.
 - RESILIENT FLOORING DEMONSTRATING A COEFFICIENT OF FRICTION OF AT LEAST 0.6 PER ASTM D2047, WILL BE ACCEPTED AS MEETING THE INTENT OF SLIP RESISTANCE.
 - CARPET SHALL HAVE A LEVEL LOOP, LEVEL CUT, OR LEVEL CUT / UNCUT PILE TEXTURE AND MAXIMUM PILE HEIGHT OF 1/2" PER CBC SECTION 1124B.3. CARPET EDGED SHALL COMPLY WITH CBC SECTION 1124B.2.

DOOR HARDWARE

CLASSROOM -	EXTERIOR DOOR HW-1
LOCKSET: SCHLAGE ND65DRH0626 (cylindrical)	Finish 26D or equal
BUTTS: HAGER BB1191 4 1/2" x 4 1/2" NRP	Finish 26D or equal
CLOSER: FALCON DEL 659	Finish 589 or equal
WEATHER STRIP: HAGER 891SAV 3694	Finish Alum or equal
THRESHOLD: HAGER 413SA 36	Finish Alum or equal
DOOR BOTTOM: HAGER 783SAV 35N	Finish Alum or equal

DOOR W/ PANIC HARDWARE -	EXTERIOR DOOR HW-2
EXIT DEVICE: VON DUHRN 98L-2 w/ SCHLAGE rim cylinder	Finish Alum or equal
BUTTS: HAGER BB1191 4 1/2" x 4 1/2" NRP	Finish 26D or equal
CLOSER: NORTON 6501 BFDA	Finish 689 or equal
WEATHER STRIP: HAGER 891SAV 3694	Finish Alum or equal
THRESHOLD: HAGER 413SA 36	Finish Alum or equal
DOOR BOTTOM: HAGER 783SAV 35N	Finish Alum or equal

STAFF RESTROOM / SINGLE OCCUPANCY -	INTERIOR DOOR HW-3
LOCKSET: SCHLAGE ND40SRH0626 (cylindrical)	Finish 26D or equal
BUTTS: HAGER 1279 4 1/2" x 4 1/2"	Finish 26D or equal

BOYS & GIRLS RESTROOM -	EXTERIOR DOOR HW-4
LOCKSET: SCHLAGE ND70DRH0626 (cylindrical)	Finish 26D or equal
BUTTS: HAGER BB1191 4 1/2" x 4 1/2" NRP	Finish 26D or equal
CLOSER: NORTON 6501 BFDA	Finish 689 or equal
WEATHER STRIP: HAGER 891SAV 3694	Finish Alum or equal
THRESHOLD: HAGER 413SA 36	Finish Alum or equal
DOOR BOTTOM: HAGER 783SAV 35N	Finish Alum or equal
LOUVER: ANEMO 24 x 12	Finish Bronze or equal

STAFF RESTROOM	EXTERIOR DOOR HW-5
LOCKSET: SCHLAGE ND85DRH0626 (cylindrical)	Finish 26D or equal
BUTTS: HAGER BB1191 4 1/2" x 4 1/2" NRP	Finish 26D or equal
WEATHER STRIP: HAGER 891SAV 3694	Finish Alum or equal
THRESHOLD: HAGER 413SA 36	Finish Alum or equal
DOOR BOTTOM: HAGER 783SAV 35N	Finish Alum or equal
LOUVER: ANEMO 24 x 12	Finish Bronze or equal

PC SIZE (SMALLEST)	CLIMATE ZONE #14 (ZONES #3 - 9 SIM)	CLIMATE ZONE #15 (ZONES #2 & 10 - 13 SIM)	CLIMATE ZONE #16 (ZONE #1 SIM)
30X32			
CONSTRUCTION TYPE			
METAL FRAME WITH RAISED CONCRETE FLOOR	ROOF MOUNTED A/C (1) 4-TONS CAPACITY CARRIER 50SZ 048 13.0 SEER	ROOF MOUNTED A/C (1) 3-TONS CAPACITY CARRIER 50SZ 036 13.0 SEER	ROOF MOUNTED A/C (1) 4-TONS CAPACITY CARRIER 50SZ 048 13.0 SEER
	WALL MOUNTED A/C (1) 5-TONS CAPACITY BARD WH 611 12.0 SEER	WALL MOUNTED A/C (1) 5-TONS CAPACITY BARD WH 611 12.0 SEER	WALL MOUNTED A/C (1) 4-TONS CAPACITY BARD WH 491 12.0 SEER
FLOOR INSULATION	R-4	R-6	R-4
ROOF INSULATION	R-30	R-30	R-19
WALL INSULATION	R-13	R-13	R-13
PC SIZE (LARGEST)	CLIMATE ZONE #14 (ZONES #3 - 9 SIM)	CLIMATE ZONE #15 (ZONES #2 & 10 - 13 SIM)	CLIMATE ZONE #16 (ZONE #1 SIM)
150X32			
CONSTRUCTION TYPE			
METAL FRAME WITH RAISED CONCRETE FLOOR	ROOF MOUNTED A/C (3) 3-TONS CAPACITY CARRIER 50SZ 036 13.0 SEER	ROOF MOUNTED A/C (3) 3-TONS CAPACITY CARRIER 50SZ 036 13.0 SEER	ROOF MOUNTED A/C (5) 4-TONS CAPACITY CARRIER 50SZ 048 13.0 SEER
	WALL MOUNTED A/C (5) 3-TONS CAPACITY BARD WH 381 12.0 SEER	WALL MOUNTED A/C (5) 3-TONS CAPACITY BARD WH 381 12.0 SEER	WALL MOUNTED A/C (5) 4-TONS CAPACITY BARD WH 491 12.0 SEER
FLOOR INSULATION	R-4	R-4	R-4
ROOF INSULATION	R-30	R-30	R-30
WALL INSULATION	R-13	R-13	R-13

IDENTIFICATION STAMP
DIV. OF THE STATE ARCHITECT
AP03 117549
AC WFLM SS TN
Date OCT 11 2010

IDENTIFICATION STAMP
DIV. OF THE STATE ARCHITECT
AP03 116979
AC WFLM SS TN
Date 4-12-10