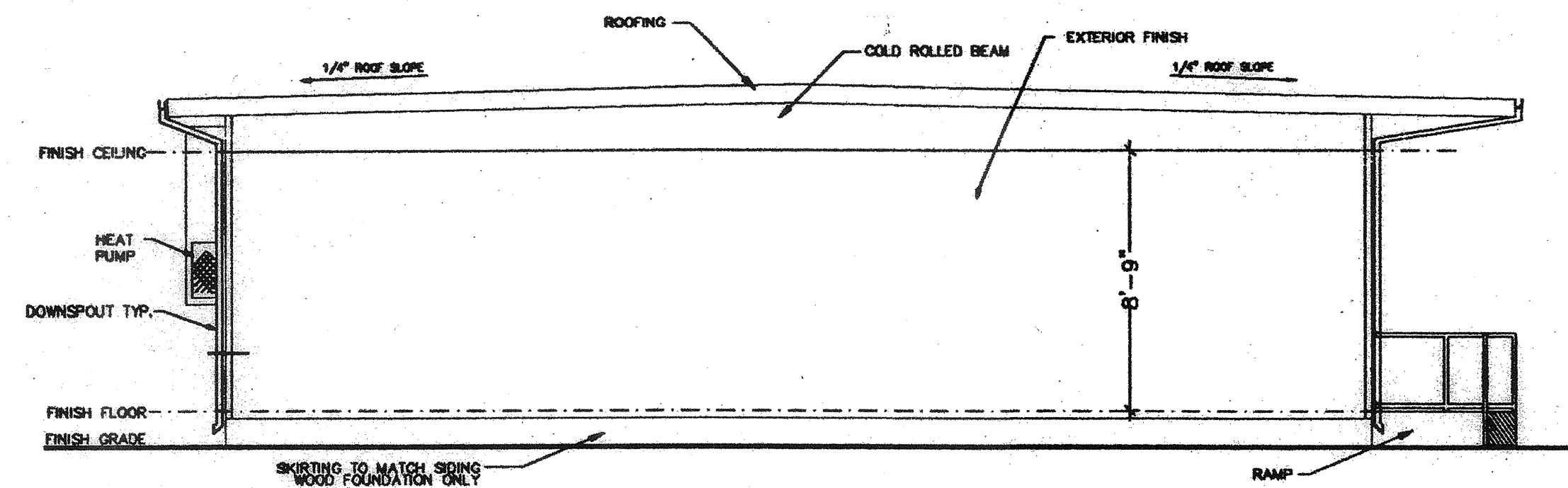
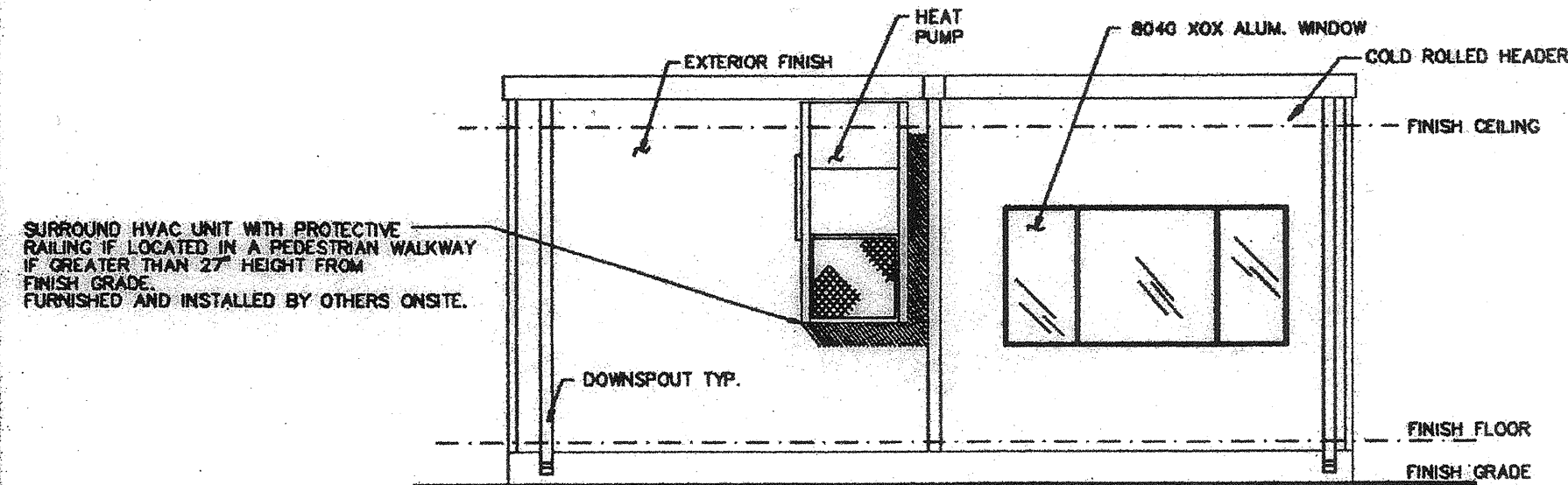


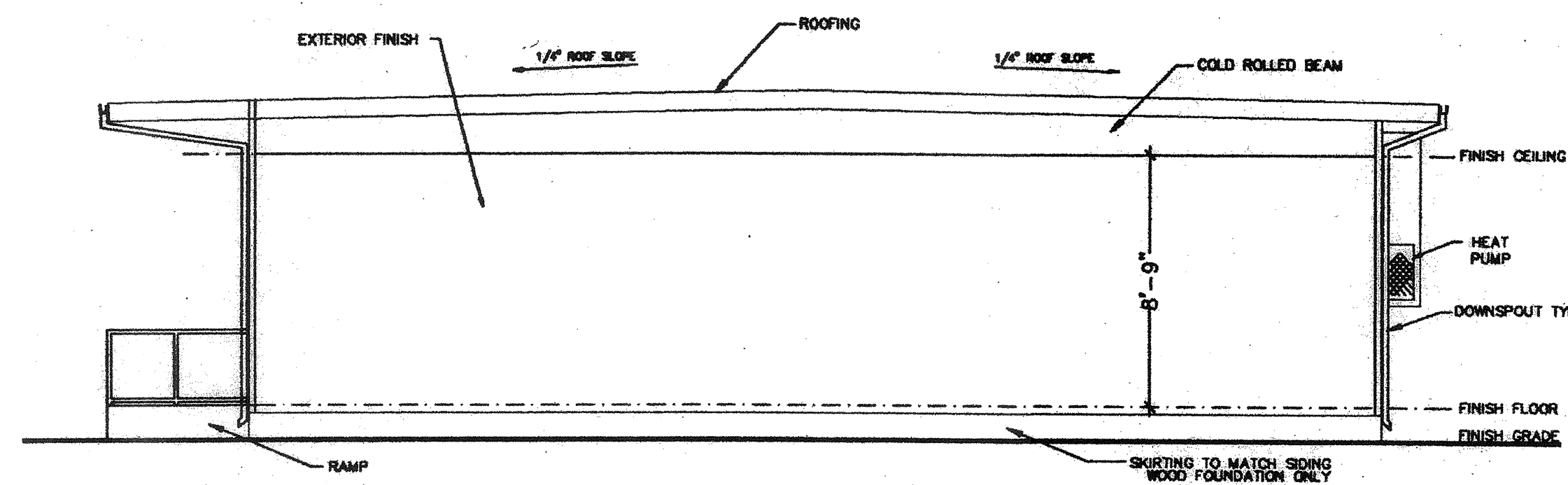
ELEVATION (A)
(SEE SHEET A-1 FOR MONO SLOPE ROOF ELEVATIONS.)



ELEVATION (C)
(SEE SHEET A-1 FOR MONO SLOPE ROOF ELEVATIONS.)



ELEVATION (B)
(SEE SHEET A-1 FOR MONO SLOPE ROOF ELEVATIONS.)



ELEVATION (D)
(SEE SHEET A-1 FOR MONO SLOPE ROOF ELEVATIONS.)

THIS DRAWING AND THE MATERIAL CONTAINED THEREIN ARE THE PROPERTY OF M.S.I. INC. AND SHALL NOT BE REPRODUCED, COPIED, OR OTHERWISE DISPOSED OF IN ANY MANNER WITHOUT THE WRITTEN CONSENT OF M.S.I. INC. ALL PATENTABLE MATERIAL CONTAINED HEREIN AND ORIGINATING WITH M.S.I. INC. SHALL BE THE PROPERTY OF M.S.I. INC.

REGENCY ENGINEERING & CONSULTING GROUP
17165 VON KARMAN, SUITE # 108
THERMIDON, CA 94593-3798
TELEPHONE: (714) 943-3798
FAX: (714) 943-3795

REGISTRATION STAMP
DIV. OF THE STATE ARCHITECT
APR 18 05
JUN 17 1997

IDENTIFICATION STAMP
DIV. OF THE STATE ARCHITECT
APP03 117549
AC W FLS MISS TN
Date OCT 11 2016

STATE AGENCY APPROVAL
APPROVED
DATE 11/21/96
DRAWN BY
SCALE
REVISIONS
2/4/97
3/17/97 DSA REV
3/24/97 MSI REV
3/31/97 MSI REV
4/25/97 MSI REV
PLOT DATE: 04/28/97
SHEET NO.
A-2-24

MSI
MODULAR STRUCTURES INTERNATIONAL, INC.
17165 VON KARMAN, SUITE # 108
THERMIDON, CA 94593-3798
TELEPHONE: (714) 943-3798
FAX: (714) 943-3795

ARCHITECT APPROVAL

STRUCTURAL ENGINEERS STAMP

STATE AGENCY APPROVAL

PROJECT
24'X40' MODULAR CLASSROOM BUILDING

TITLE
EXTERIOR ELEVATIONS (DUAL PITCH ROOF)

JOB # 96-1310
DATE 11/21/96
DRAWN BY
SCALE
APPROVED
REVISIONS
2/4/97
3/17/97 DSA REV
3/24/97 MSI REV
3/31/97 MSI REV
4/25/97 MSI REV
PLOT DATE: 04/28/97
SHEET NO.
A-2-24

PC-323