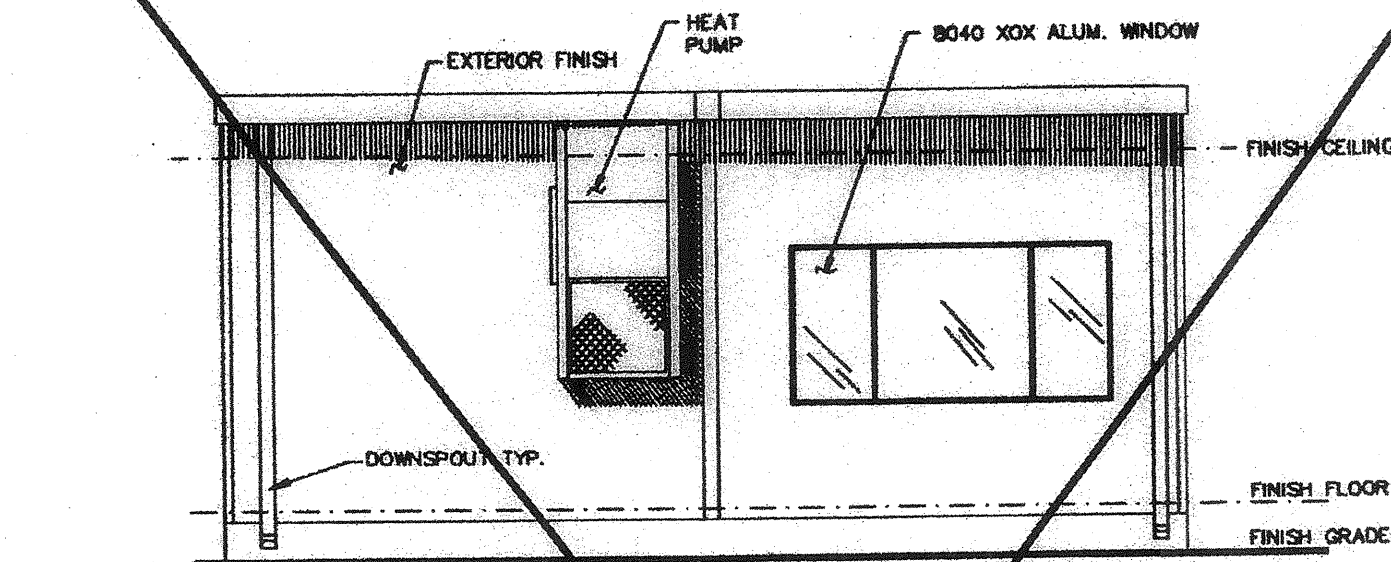
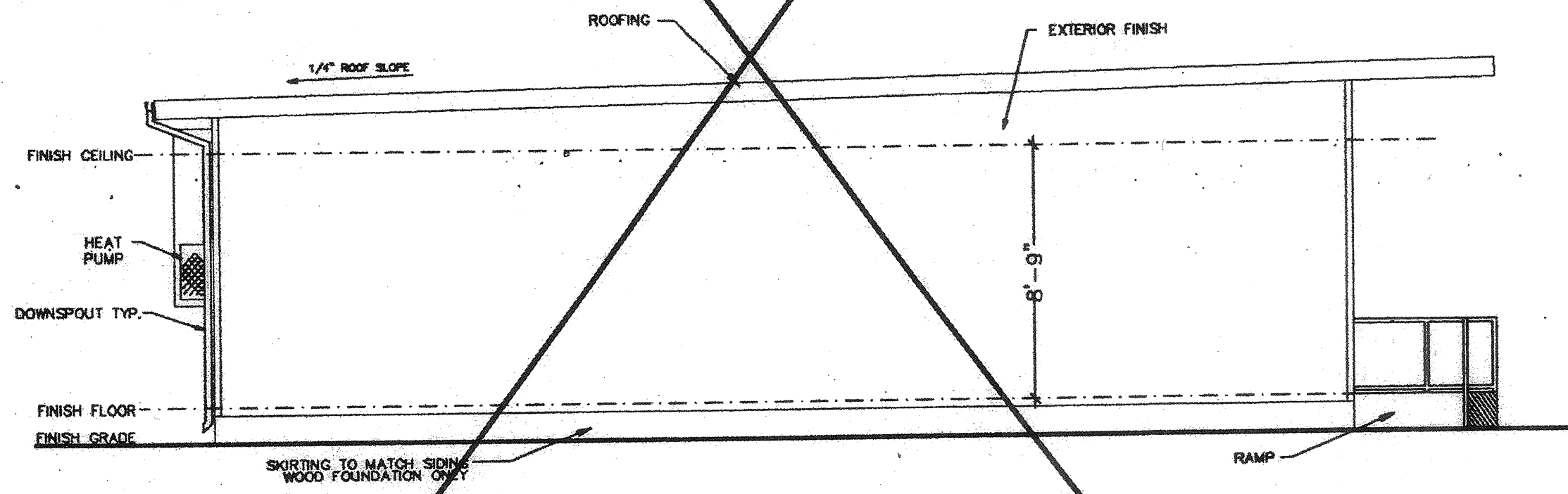


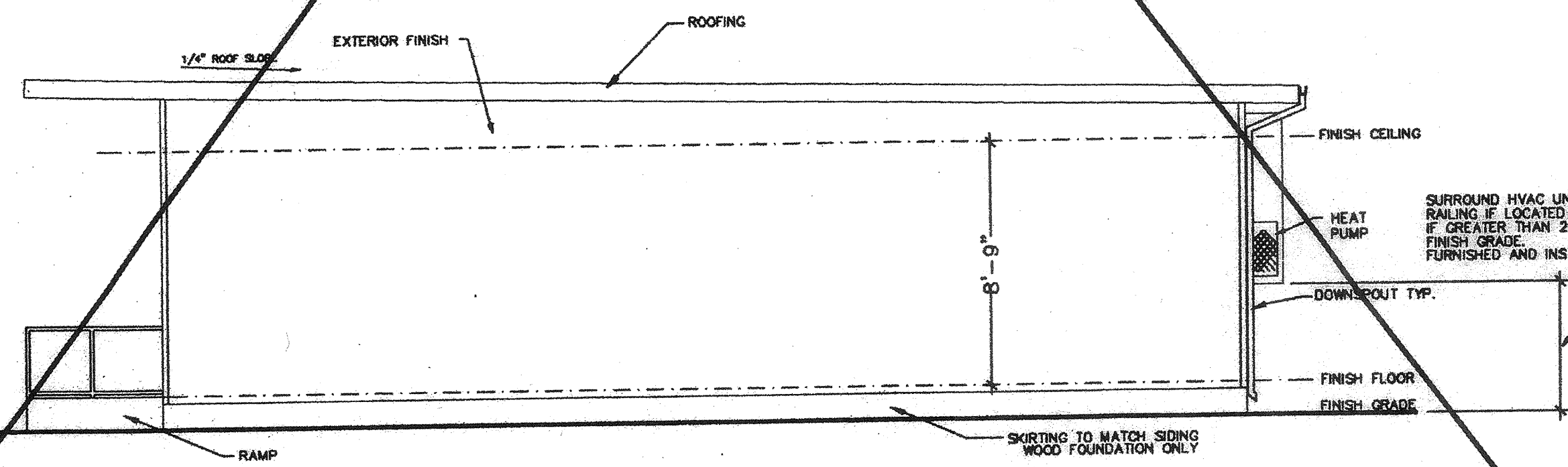
ELEVATION A
(SEE SHEET A-2 FOR DUAL SLOPE ROOF ELEVATIONS.)



ELEVATION B
(SEE SHEET A-2 FOR DUAL SLOPE ROOF ELEVATIONS.)



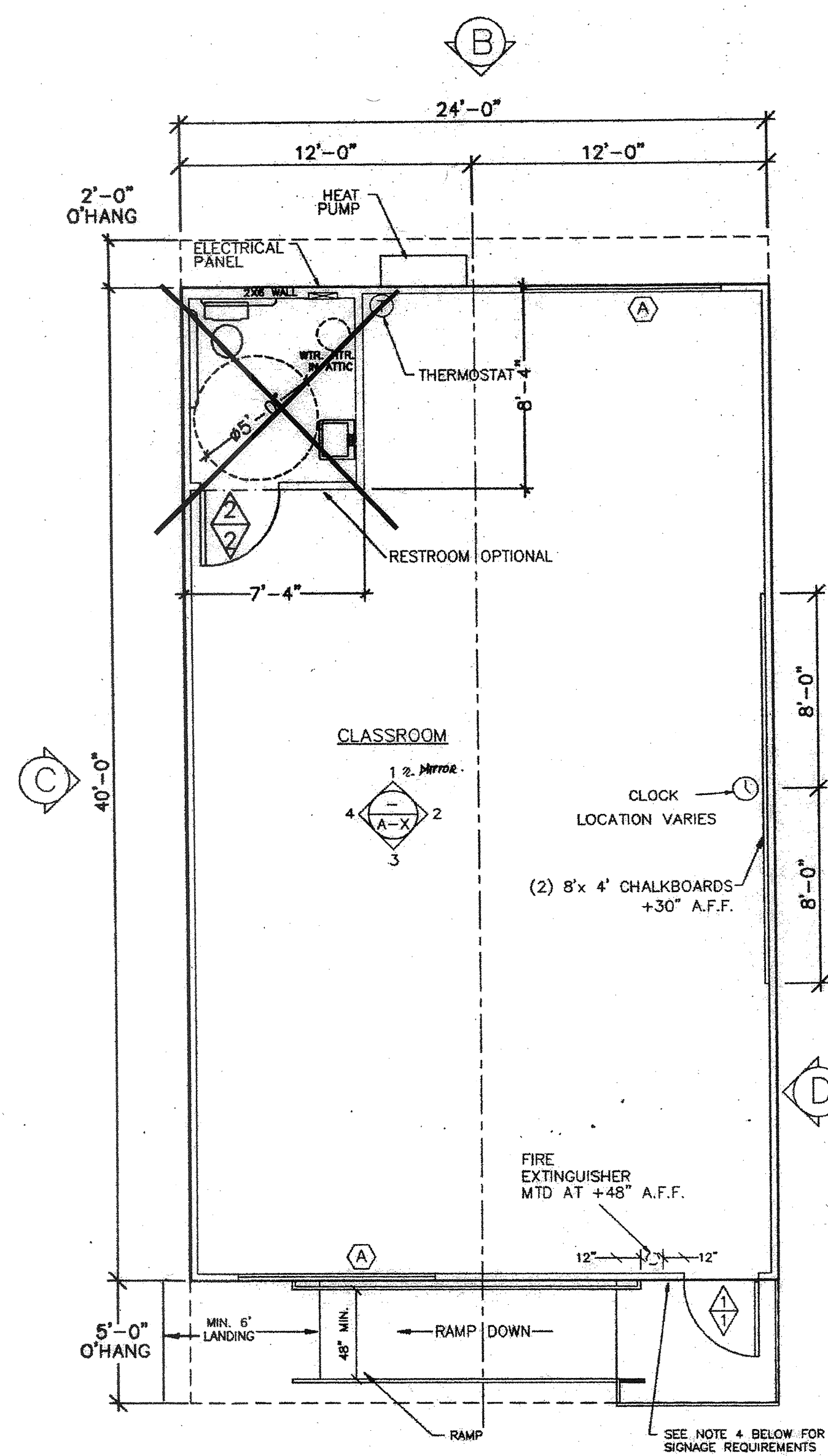
ELEVATION C
(SEE SHEET A-2 FOR DUAL SLOPE ROOF ELEVATIONS.)



ELEVATION D
(SEE SHEET A-2 FOR DUAL SLOPE ROOF ELEVATIONS.)

FLOOR PLAN

- ◊ INDICATES DOOR TYPE SEE SHEET G-1
- ◊ INDICATES HARDWARE TYPE
- ◊ INDICATES WINDOW TYPE- SEE SHEET G-1



NOTE:
FLOOR PLAN SHOWN IS 'B' BUILDING
'A' BUILDING IS OPPOSITE HANDED

NOTES:

1. MANUFACTURER SHALL MECHANICALLY ATTACH METAL TAG TO EXTERIOR OF BUILDING SHOWING OSA APPLICATION NUMBER, MANUFACTURER'S NAME, UNIT SERIAL NUMBER, DESIGN LIVE LOADS FOR FLOOR AND ROOF, AND THE DESIGN WIND LOAD.
2. WALL AND CEILING FINISHES SHALL BE MIN. CLASS 1 MATERIAL.
3. FIBERGLAS INSULATION SHALL HAVE THE FOLLOWING: FLAME SPREAD 0-25, SMOKE DEVELOPED, FUEL CONTRIBUTED 0-450.
4. SIGNAGE REQUIRED PER APPLICABLE CODES LISTED ON SHEET T-1 PROVIDED AND INSTALLED BY OTHERS ONSITE.
5. ANY ROOM HAVING AND OCCUPANT LOAD OF 50 OR MORE WHERE FIXED SEATS ARE NOT INSTALLED, AND WHICH IS USED FOR CLASSROOM, ASSEMBLY, DINING OR SIMILAR PURPOSE SHALL HAVE THE CAPACITY OF THE ROOM POSTED IN A CONSPICUOUS PLACE NEAR THE MAIN EXIT OF THE ROOM. POSTING SHALL BE BY MEANS OF A DURABLE SIGN HAVING CONTRASTING COLOR FROM THE BACKGROUND TO WHICH IT IS ATTACHED.
6. MAXIMUM EFFORT TO OPERATE DOORS SHALL NOT EXCEED 8-1/2 POUNDS FOR EXTERIOR DOORS AND 5 POUNDS FOR INTERIOR DOORS, SUCH PULL OR PUSH EFFORT BEING APPLIED AT RIGHT ANGLES TO HINGED DOORS AND AT THE CENTER PLANE OF SLIDING OR FOLDING DOORS. COMPENSATING DEVICES OR AUTOMATIC DOOR OPERATORS MAY BE UTILIZED TO MEET THE ABOVE STANDARDS. WHEN FIRE DOORS ARE REQUIRED THE MAXIMUM EFFORT TO OPERATE THE DOOR MAY BE INCREASED NOT TO EXCEED 15 POUNDS.

IDENTIFICATION STAMP
DIV. OF THE STATE ARCHITECT

APP03 117549
ACW FLS MSS TH
Date OCT 11 2015

THIS DRAWING AND THE MATERIAL CONTAINED THEREIN ARE THE PROPERTY OF M.S.I. INC. AND SHALL NOT BE USED IN WHOLE OR IN PART FOR ANY OTHER PROJECT WITHOUT THE WRITTEN PERMISSION OF M.S.I. INC. ALL INFORMATION FOR THE MAKING OF DRAWINGS, PRINTS, APPARATUS OR PARTS THEREOF MUST BE OBTAINED FROM M.S.I. INC. MATERIAL CONTAINED HEREIN AND ORIGINATING WITH M.S.I. INC. SHALL REMAIN THE PROPERTY OF M.S.I. INC.



ARCHITECT APPROVAL
STRUCTURAL ENGINEERS STAMP
STATE AGENCY APPROVAL

MSI
MODULAR STRUCTURES INTERNATIONAL, INC.
17165 VON KARMAN, SUITE # 108
IRVINE, CALIFORNIA 92614
TELEPHONE: (949) 261-9277
FAX: (949) 261-9282

REGENCY ENGINEERING & CONSULTING GROUP
17165 VON KARMAN, SUITE # 108
IRVINE, CALIFORNIA 92614
TELEPHONE: (949) 261-9277
FAX: (949) 261-9282
A SUBSIDIARY OF REGENCY COMPANY, INC.

PROJECT
24'x40' MODULAR CLASSROOM BUILDING

JOB # 96-1310

DATE 11/21/96

DRAWN BY

SCALE

APPROVED

REVISIONS
2/4/97
3/17/97 DSA REV.
3/24/97 MSI REV.
3/31/97 MSI REV.
4/25/97 MSI REV.

PLOT DATE: 04/28/97

SHEET NO.
A-1-24

FLOOR PLAN & EXTERIOR ELEVATIONS

PC-323