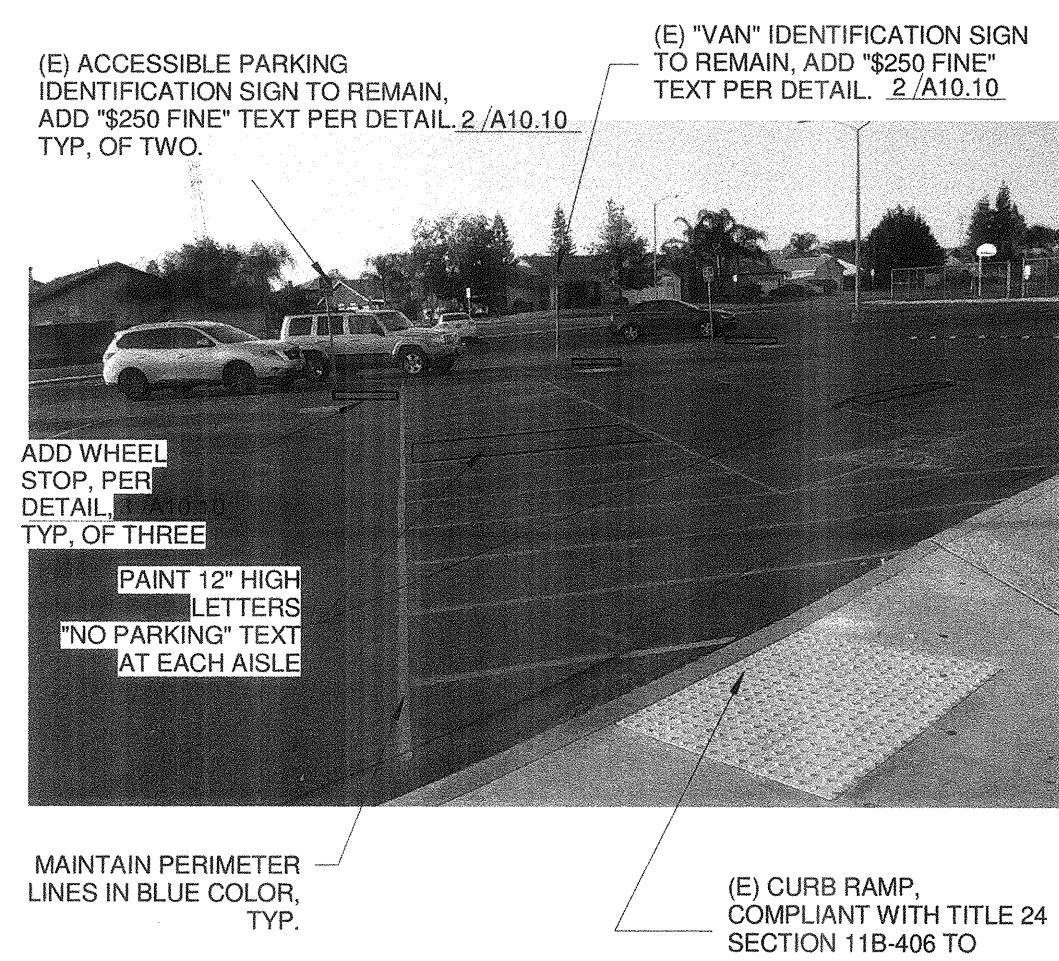
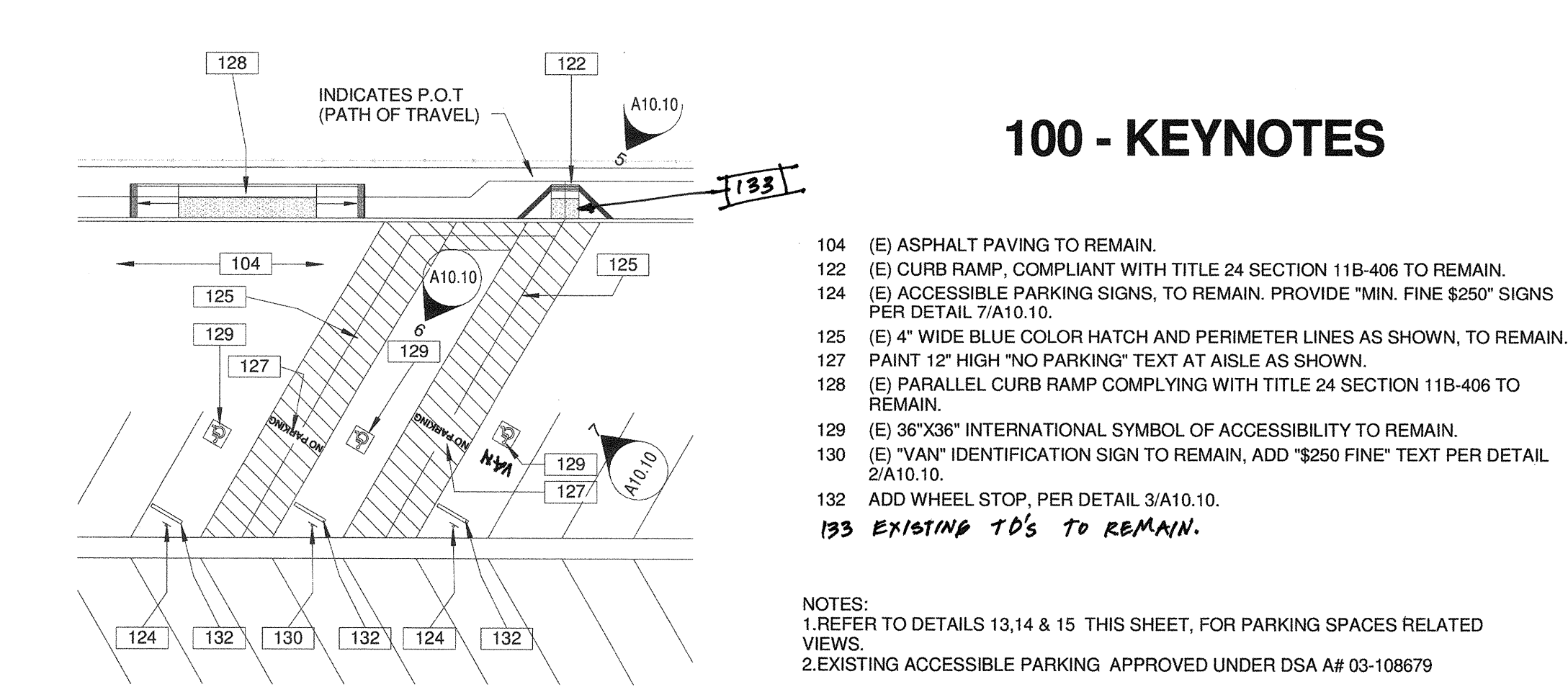


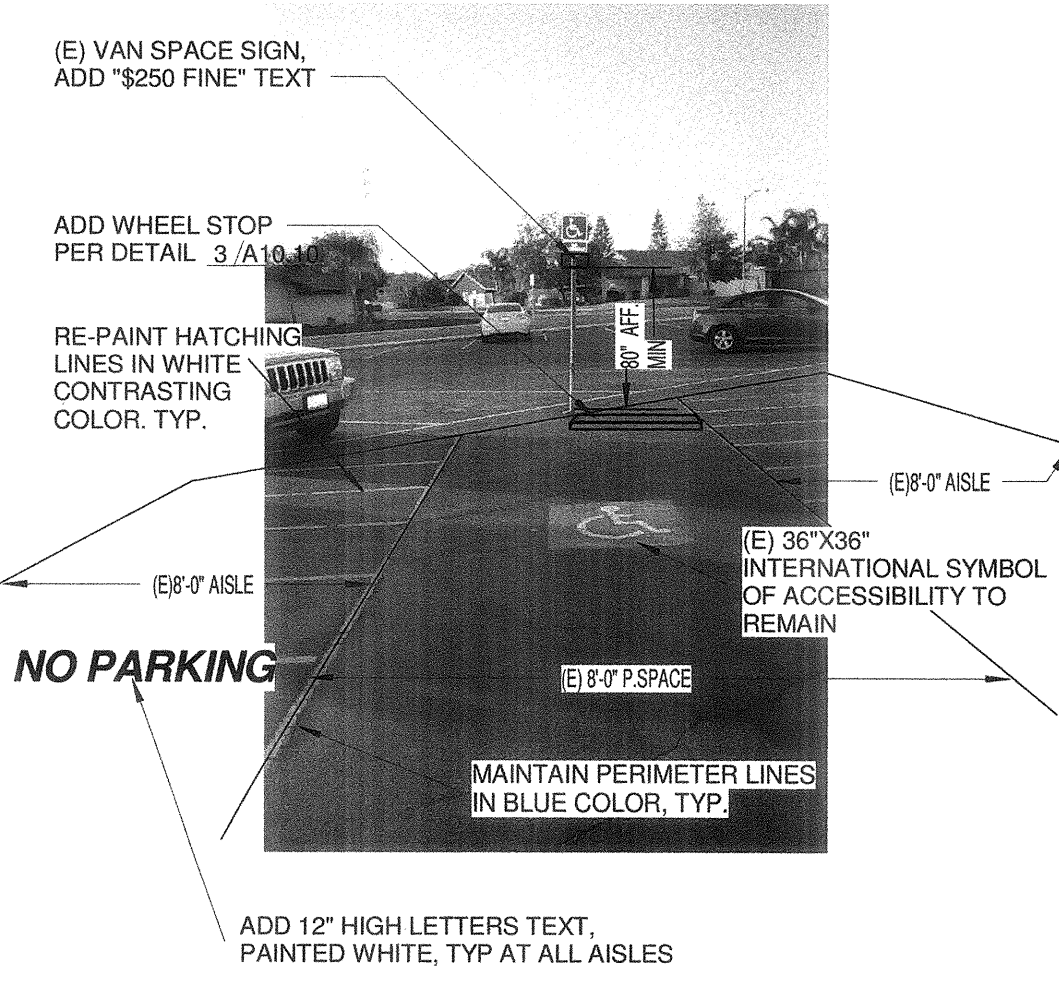
13 PARKING ENTRY SIGN 3/4" = 1'-0"



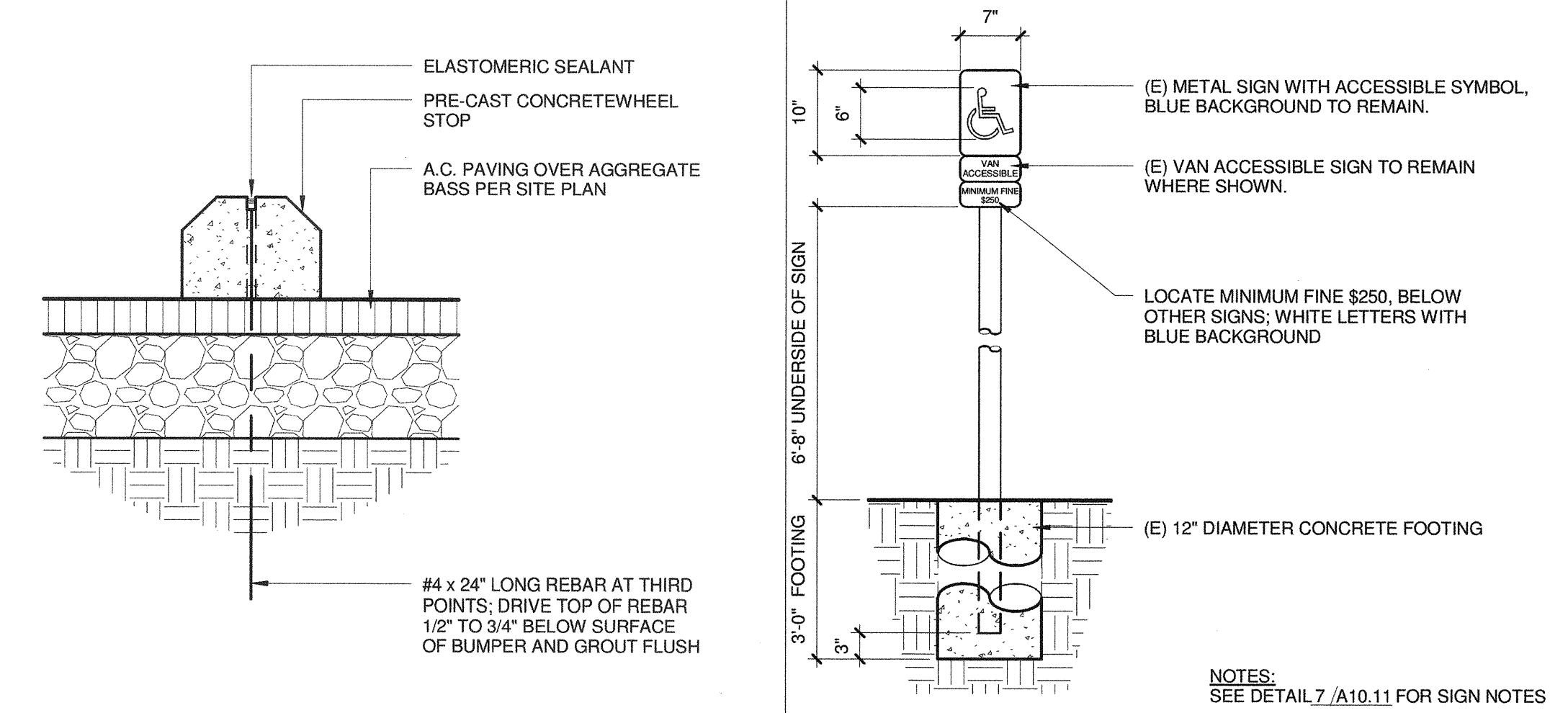
5 (E) ACCESS PARKING N.T.S



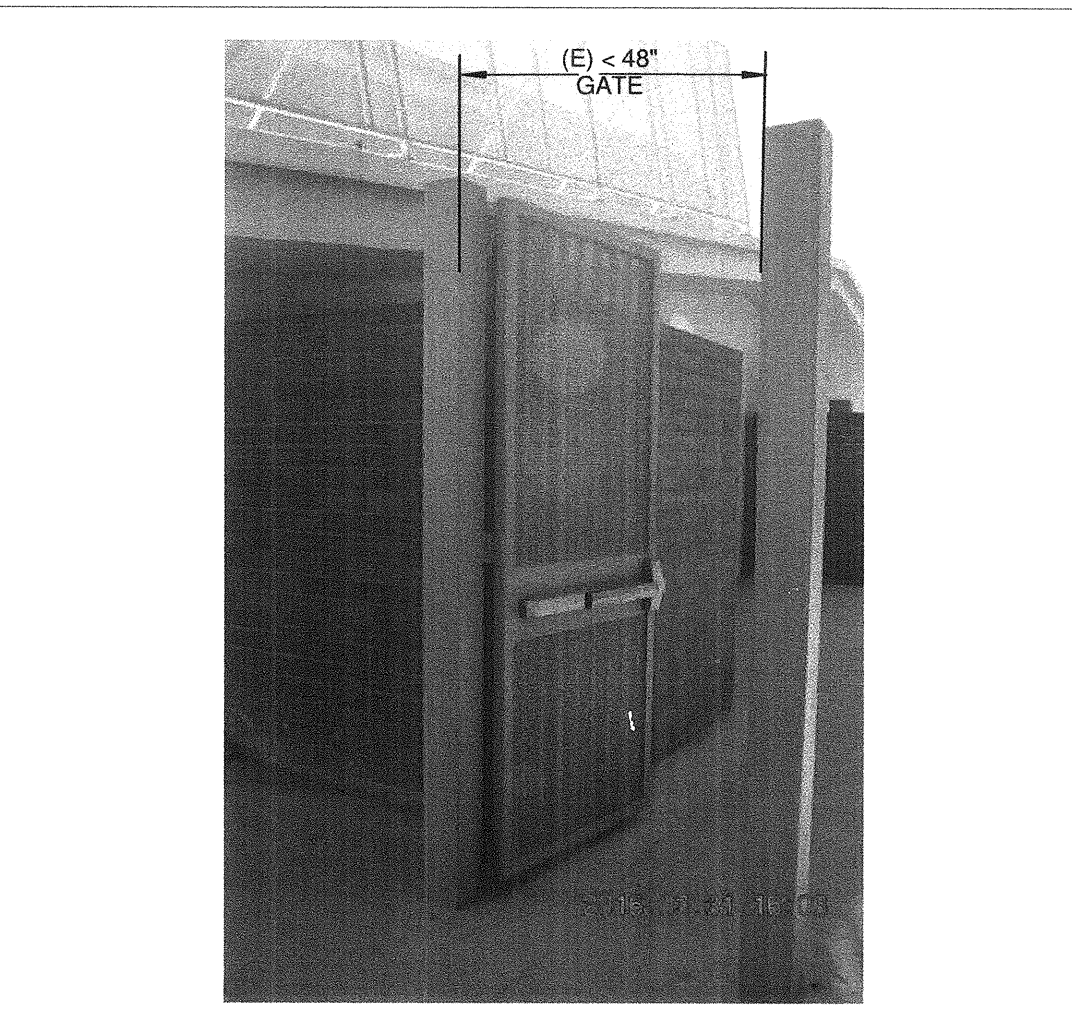
1 (E) ACCESSIBLE PARKING 1" = 20'-0"



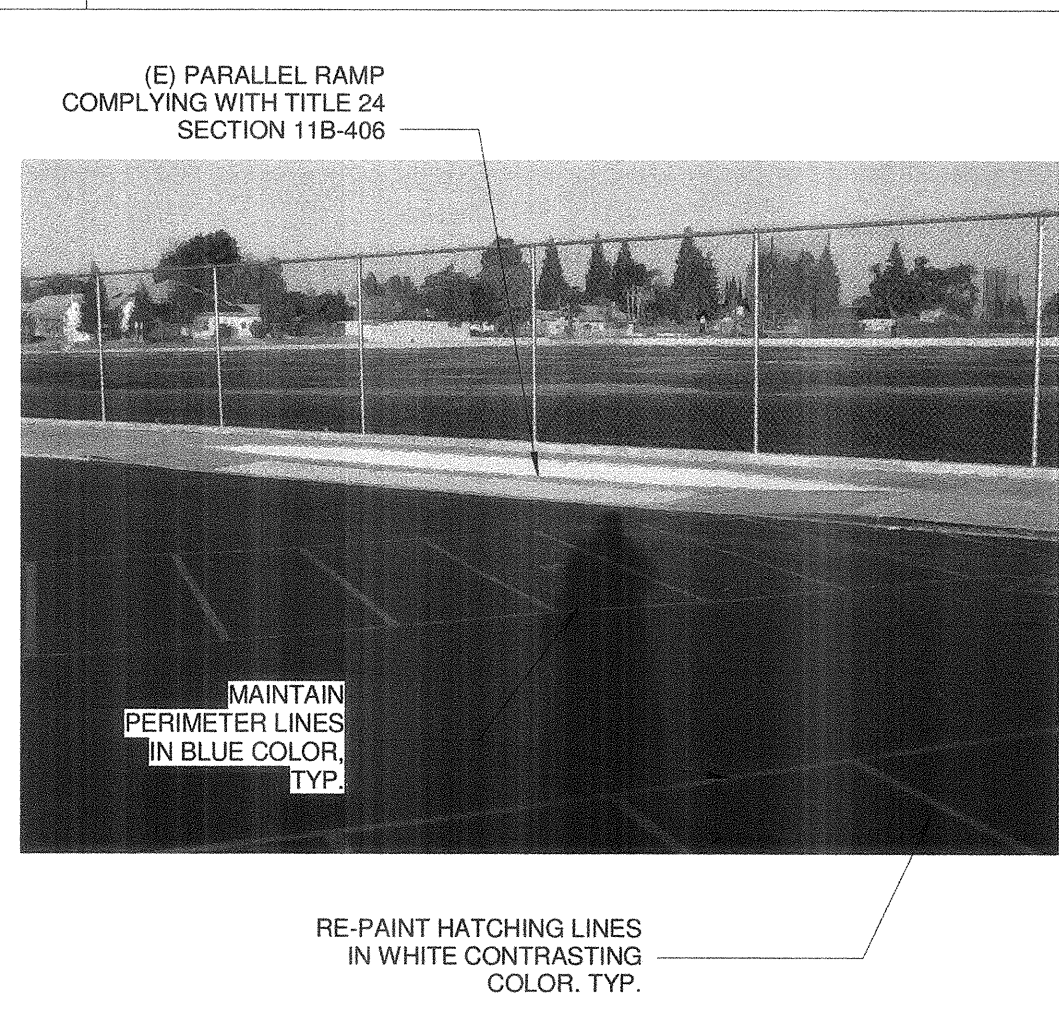
6 (E) VAN SPACE N.T.S



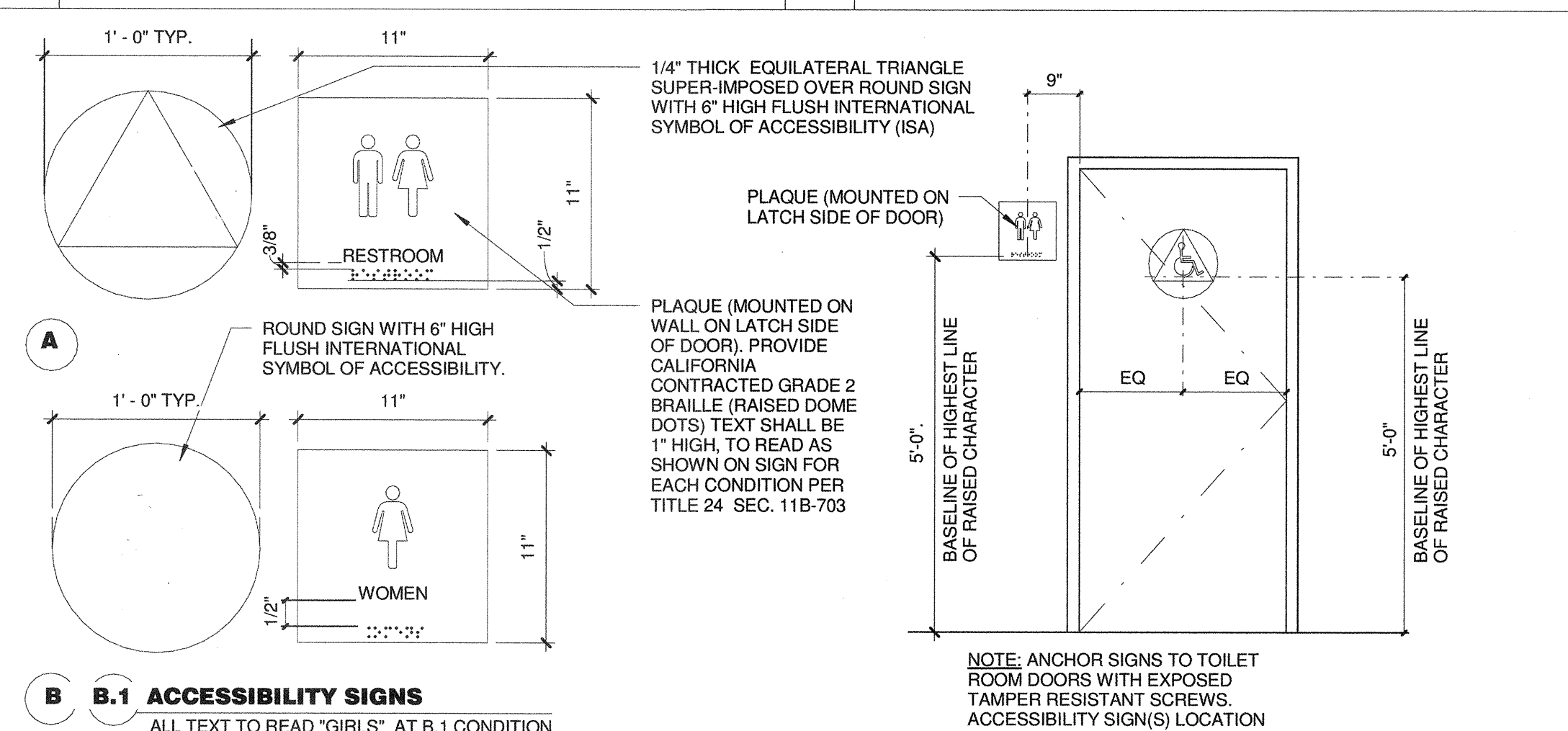
2 ACCESS PKNG SIGN 3/4" = 1'-0"



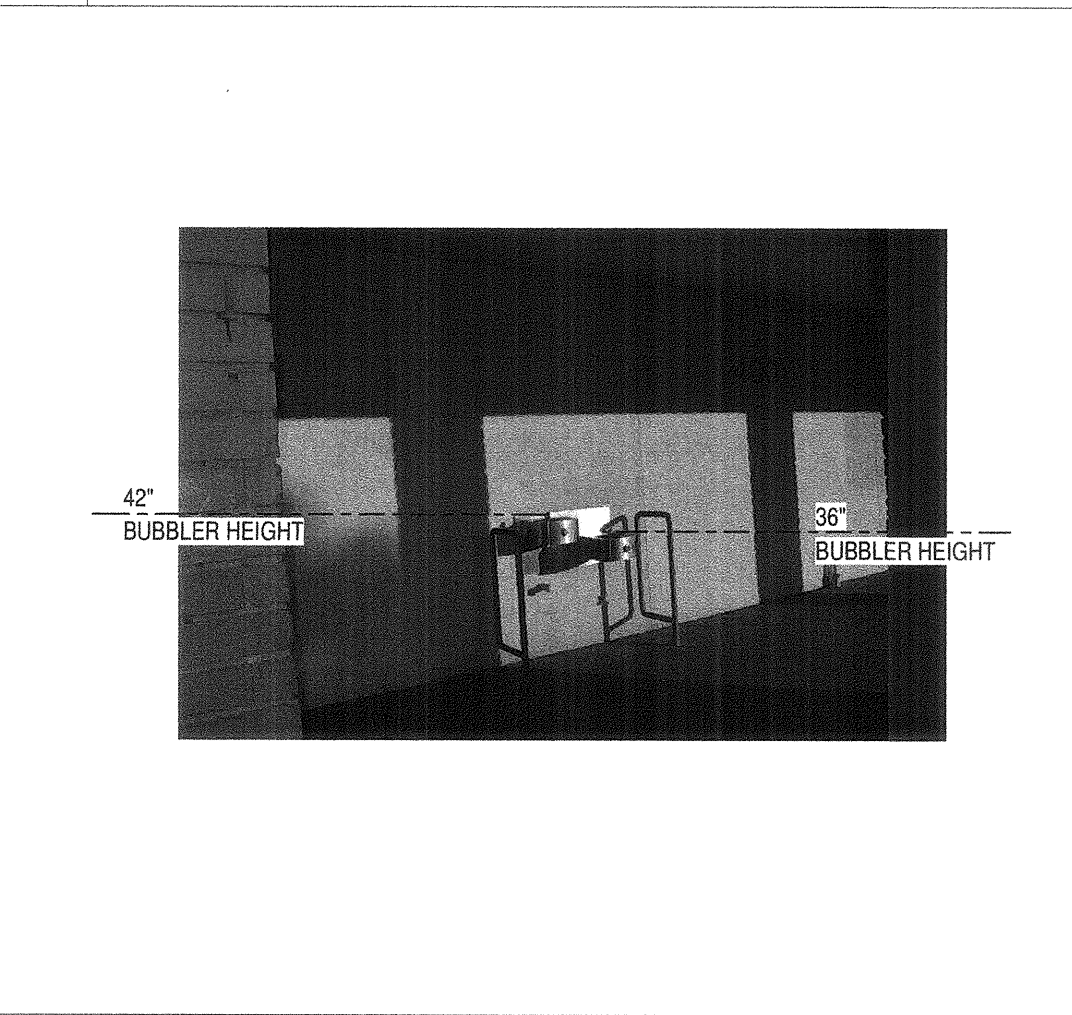
11 (E) MAIN GATE 12" = 1'-0"



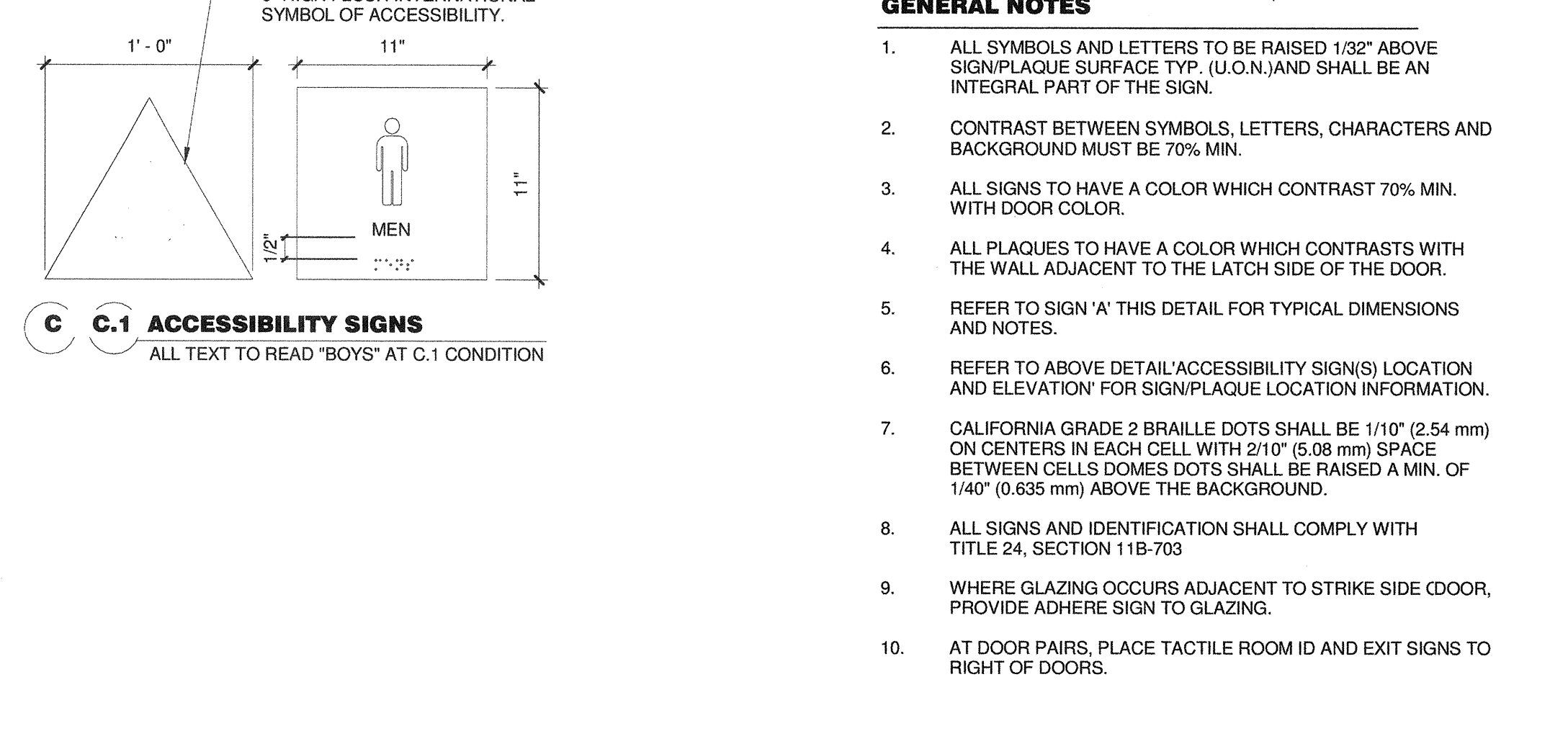
7 (E) PARALLEL RAMP N.T.S



3 WHEELSTOP 1 1/2" = 1'-0"

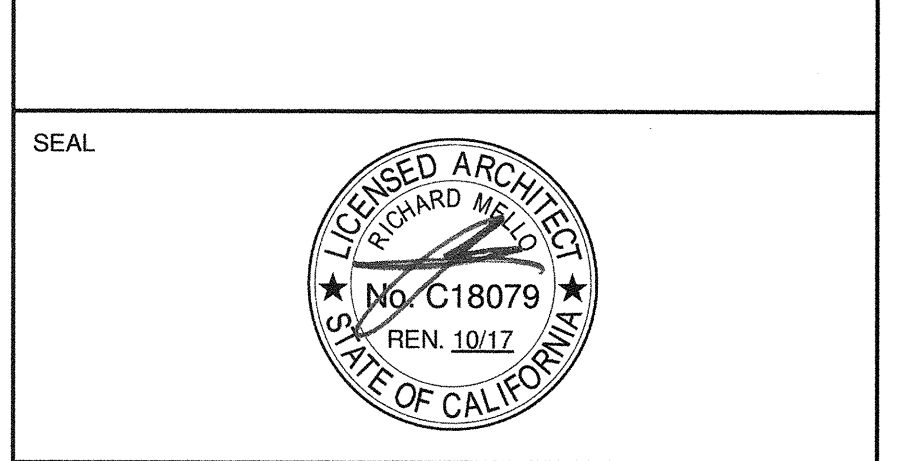


12 (E) D. FOUNTAIN 12" = 1'-0"



4 ACCESSIBLE SIGNAGE 1 1/2" = 1'-0"

PRIME CONSULTANT
IBI ARCHITECTURE PLANNING
 San Luis Obispo
 4119 Broad Street, Suite 210
 San Luis Obispo, CA 93401
 805.546.0433 fax: 805.546.0504



COPYRIGHT: Any reproduction or distribution for any purpose other than authorized by IBI Group is forbidden.
 COPYRIGHT 2016 IBI GROUP

REVISIONS			
NO.	DATE	APPRD.	DESCRIPTION

CONSULTANT

AGENCY INFORMATION:
 AGENCY TRACKING NO. 63321-243
 FILE NO. 15-6
 IDENTIFICATION STAMP
 DIV. OF THE STATE ARCHITECT
 OFFICE OF REGULATION SERVICES
 02-117549
 AC: [initials] FLS: [initials] SS: [initials] TN: [initials]
 DATE: OCT 11 2016

BAKERSFIELD CITY SCHOOL DISTRICT

CHIPMAN JR. HIGH NEW RELOCATABLES (3)
 2905 EISSLER ST
 BAKERSFIELD, CA 93306

OPSC or OSHPD PROJ. NO:
 PROJECT NO: 16166.000
 DRAWN BY: rRr
 CHK'D BY: RM
 ISSUE DATE: 10/05/2016

SHEET TITLE
PARKING & ACCESS DETAILS - DSA #A03-117283

SHEET NUMBER
A10.10

CONSTRUCTION DOCUMENTS