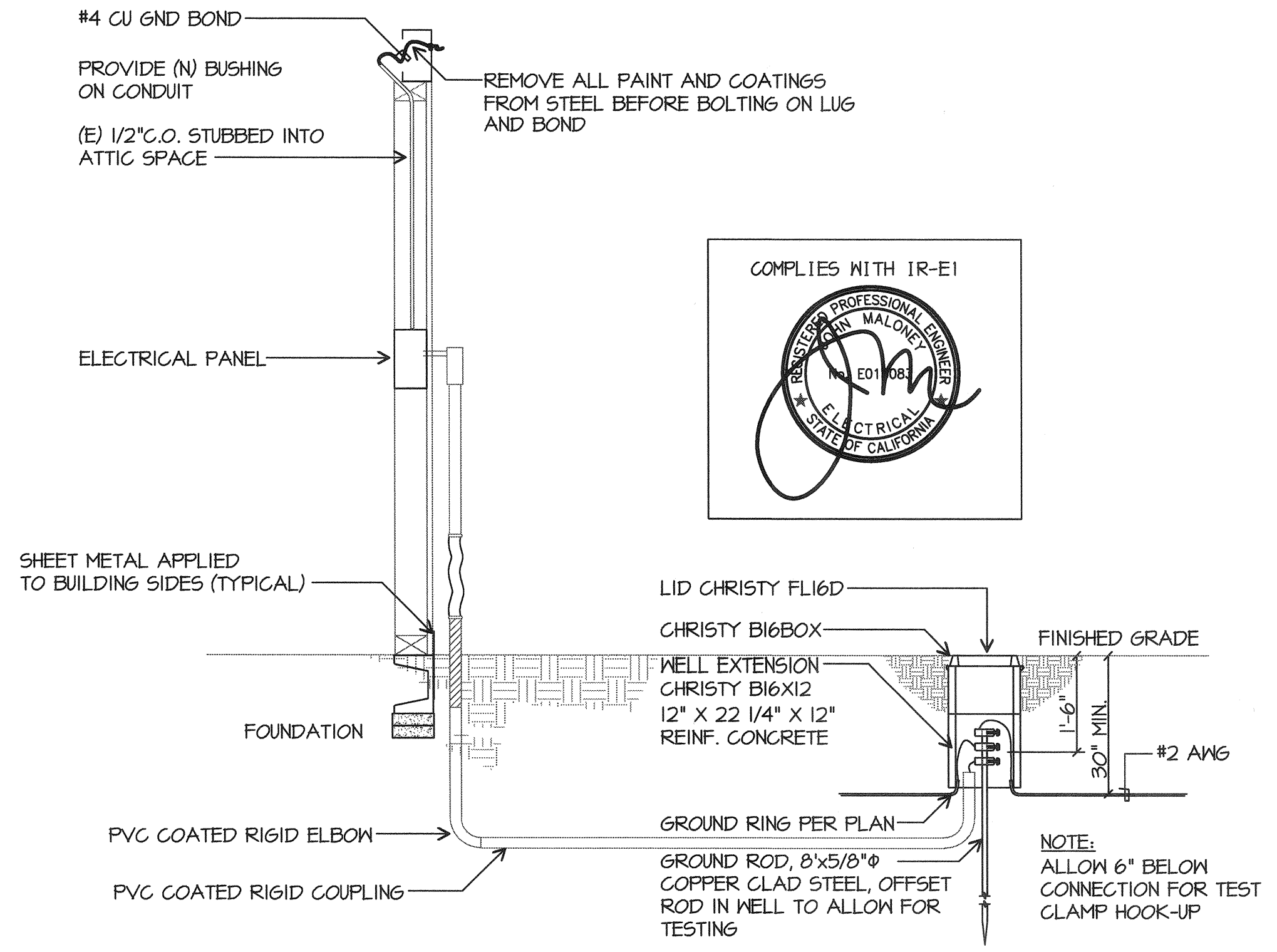
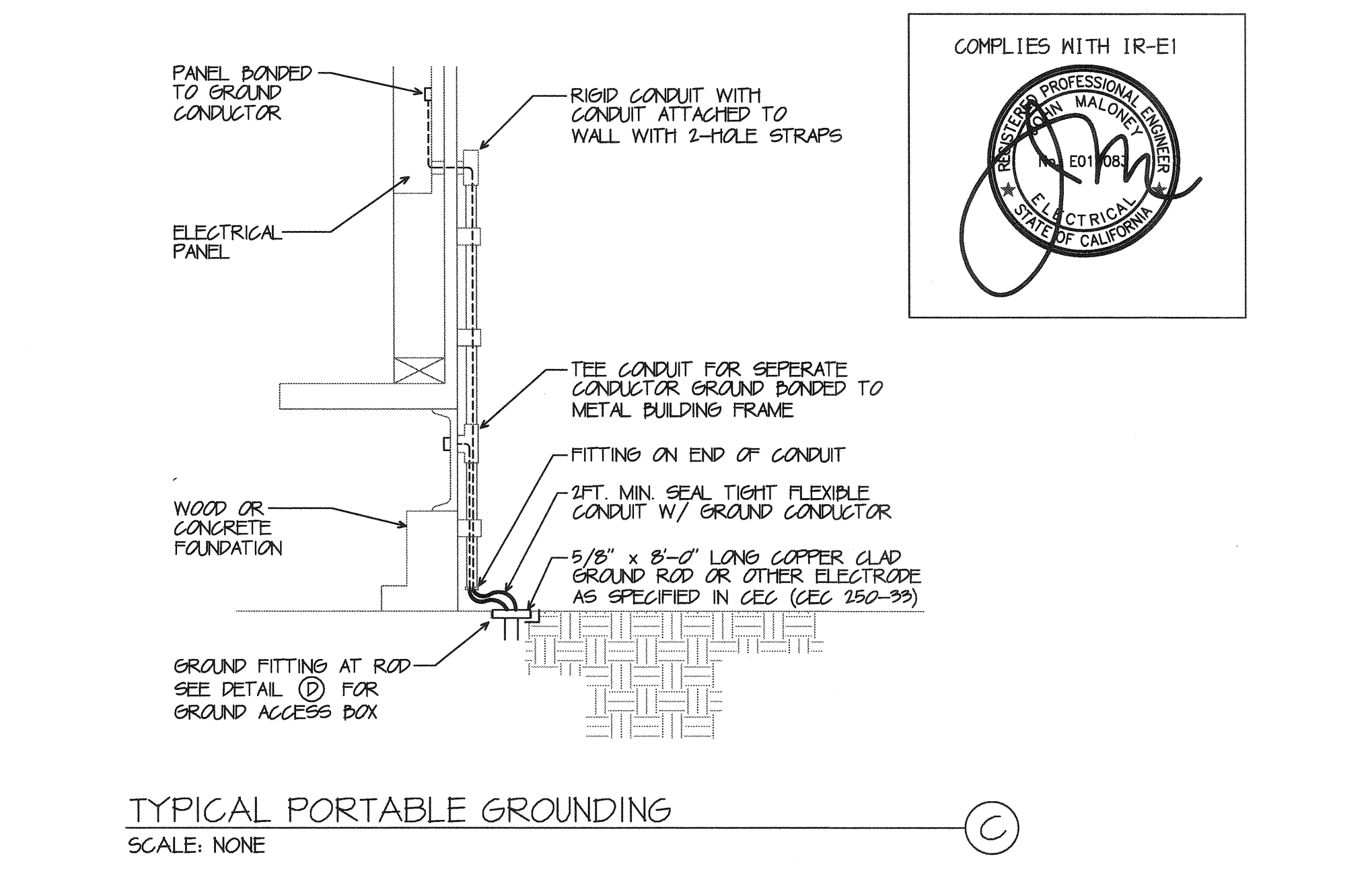


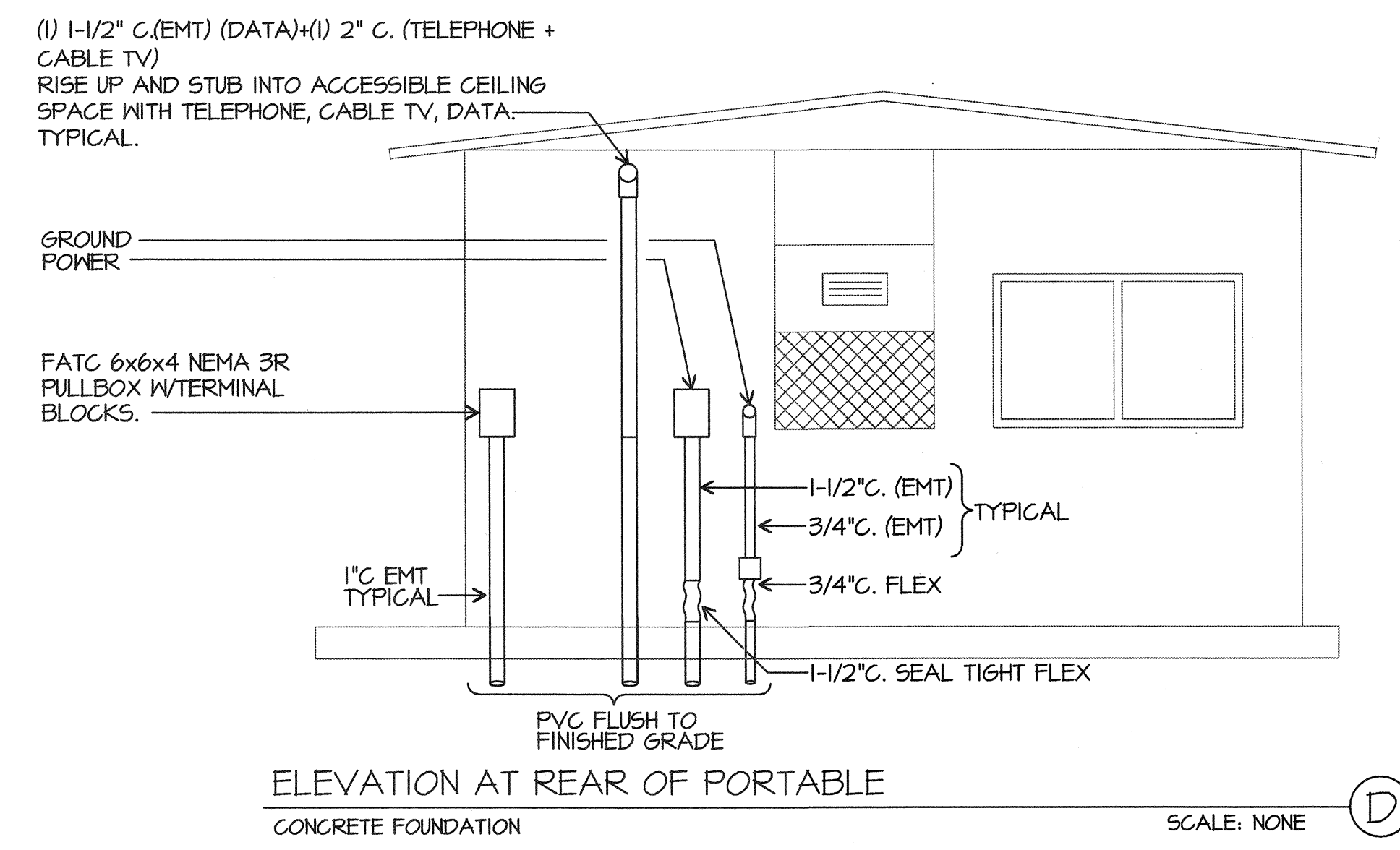
GROUND ACCESS BOX
SCALE: NONE



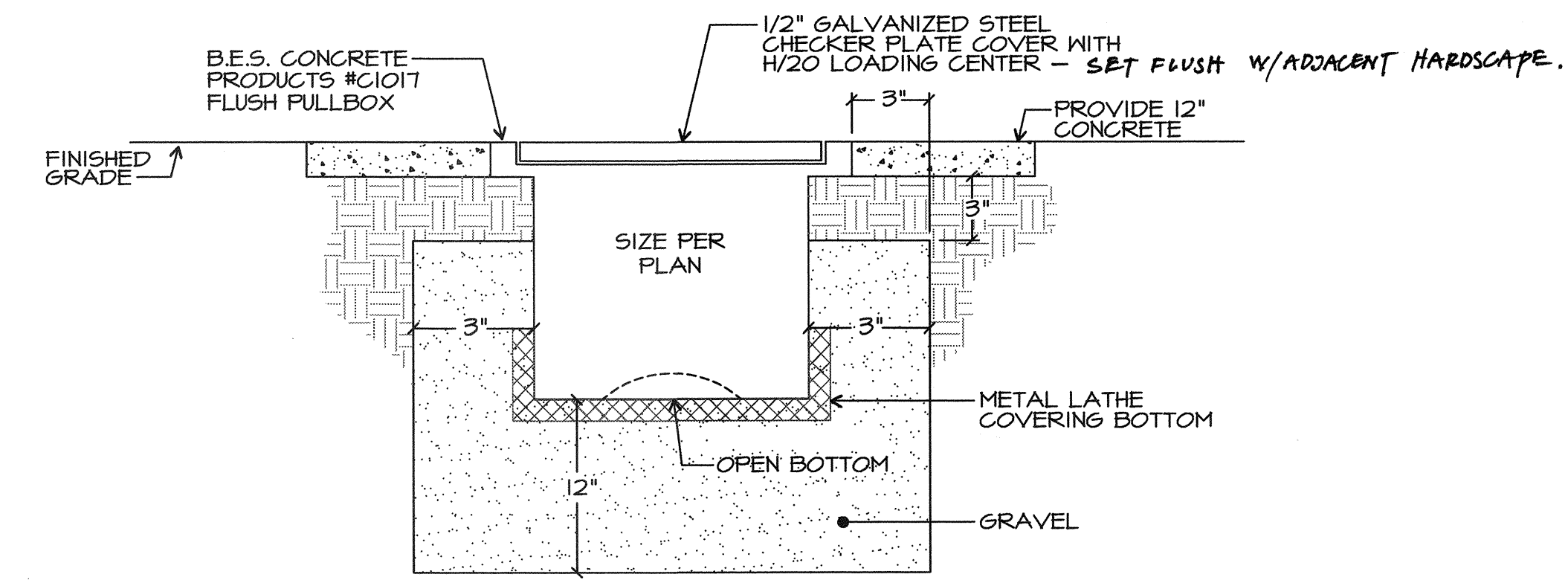
TYPICAL TRAILER STEEL FRAME BONDING/GROUNDING DETAIL
SCALE: NONE



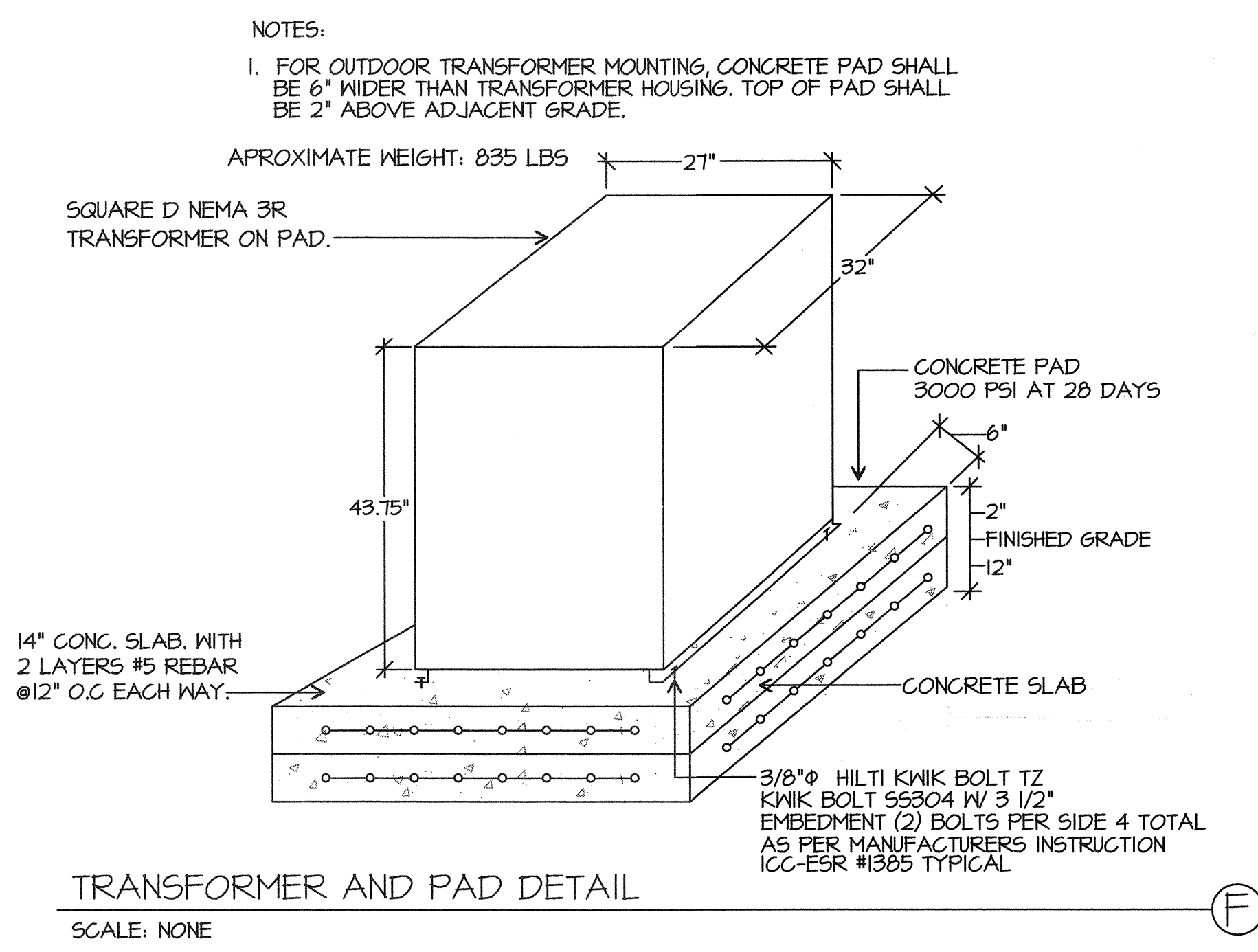
TYPICAL PORTABLE GROUNDING
SCALE: NONE



ELEVATION AT REAR OF PORTABLE
SCALE: NONE



FLUSH PULLBOX DETAIL
SCALE: NONE



TRANSFORMER AND PAD DETAIL
SCALE: NONE

PRIME CONSULTANT
IBI ARCHITECTURE PLANNING
San Luis Obispo
4115 Broad Street, Suite B-6
San Luis Obispo, CA 93401
805.546.0433 fax:805.546.0504



COPYRIGHT: Any reproduction or distribution for any purpose other than authorized by IBI Group is forbidden.
COPYRIGHT 2014 IBI GROUP

REVISIONS			
NO.	DATE	APPRD.	DESCRIPTION

CONSULTANT
JMPE
ELECTRICAL ENGINEERING
LIGHTING DESIGN
CA REGISTRATION NO. E130085
16217
5000 MING AVENUE, SUITE 201 BAKERSFIELD, CA 93309
(805) 851-7851
FAX (805) 851-7815
email: maloney@jmpe.net
www.jmpe.net

AGENCY INFORMATION:
AGENCY TRACKING NO. 63321-243
FILE NO. 15-6
IDENTIFICATION STAMP
DIV. OF THE STATE ARCHITECT
OFFICE OF REGULATION SERVICES
03-117549
AC. W. FLS. M. S. TN.
DATE: OCT 11 2016

BAKERSFIELD CITY SCHOOL DISTRICT

CHIPMAN JR. HIGH NEW RELOCATABLES (3)
2905 EISSLER ST
BAKERSFIELD, CA 93306

OPSC or OSHPD PROJ. NO:
PROJECT NO: 16166.000
DRAWN BY: AC
CHK'D BY: KT
ISSUE DATE: 10/05/2016

SHEET TITLE
DETAILS

SHEET NUMBER
E-0.1

PLOT DATE: 8/26/2016 1:49:22 PM J:\16166_BC_Chipman\315.9 Drawings\55search\current\ATW-16166-Asite_Chipman 2.rvt