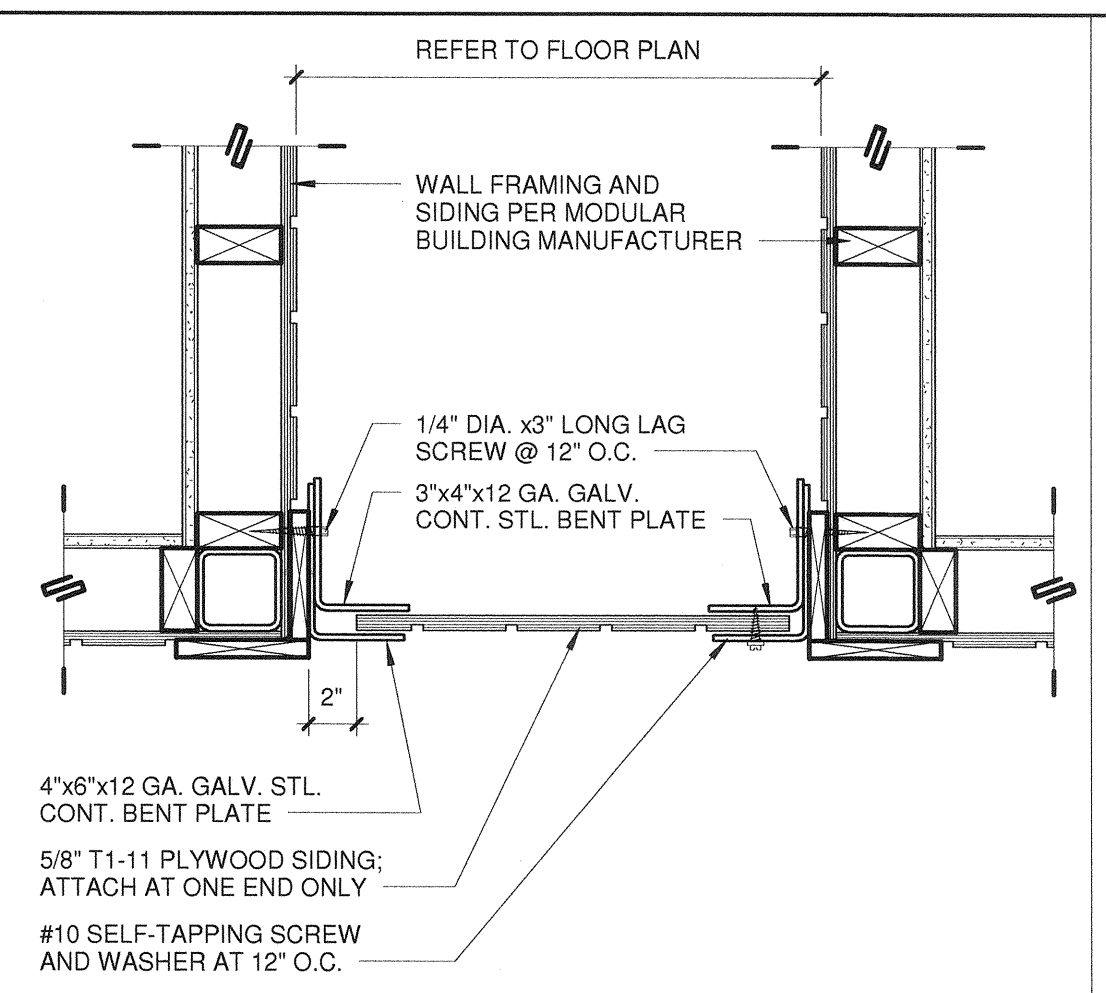
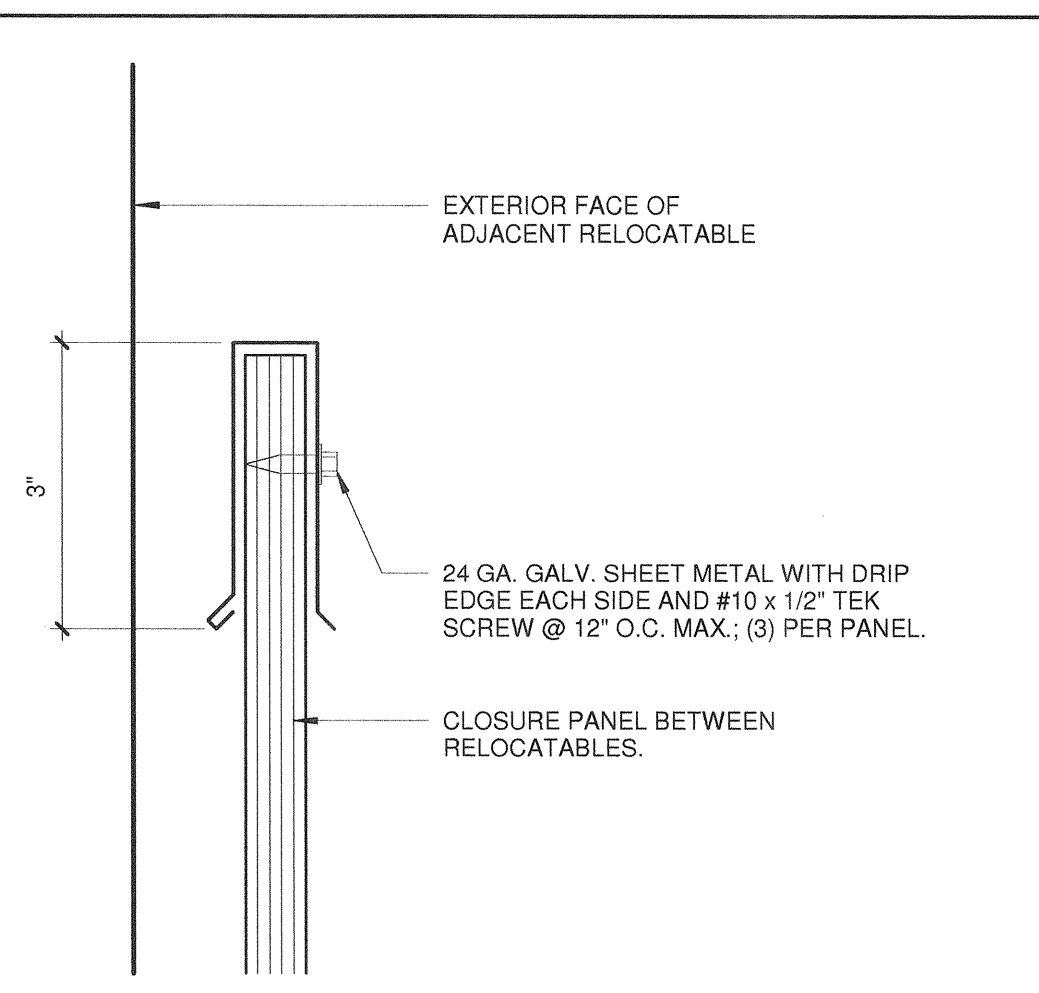


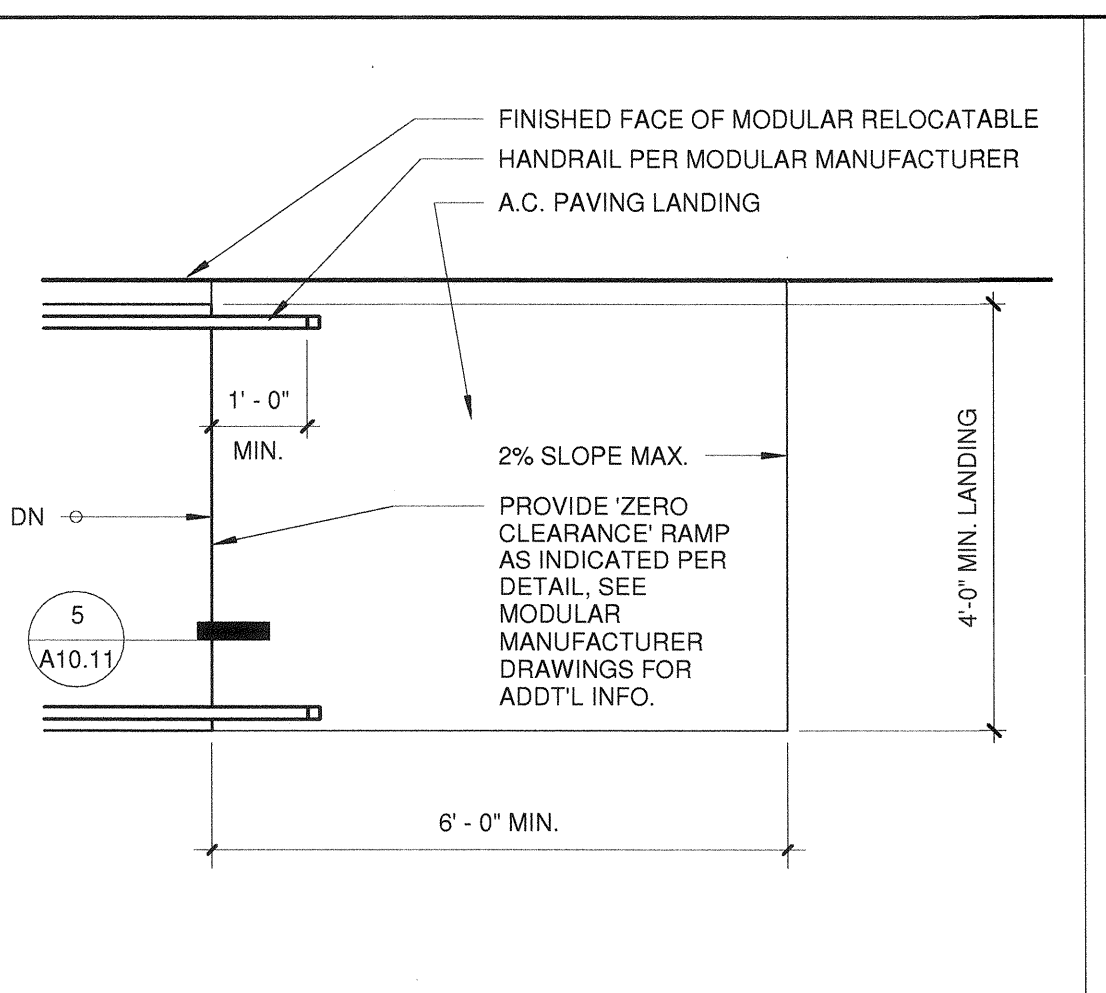
**1 CLOSURE PANEL** 1/4" = 1'-0"



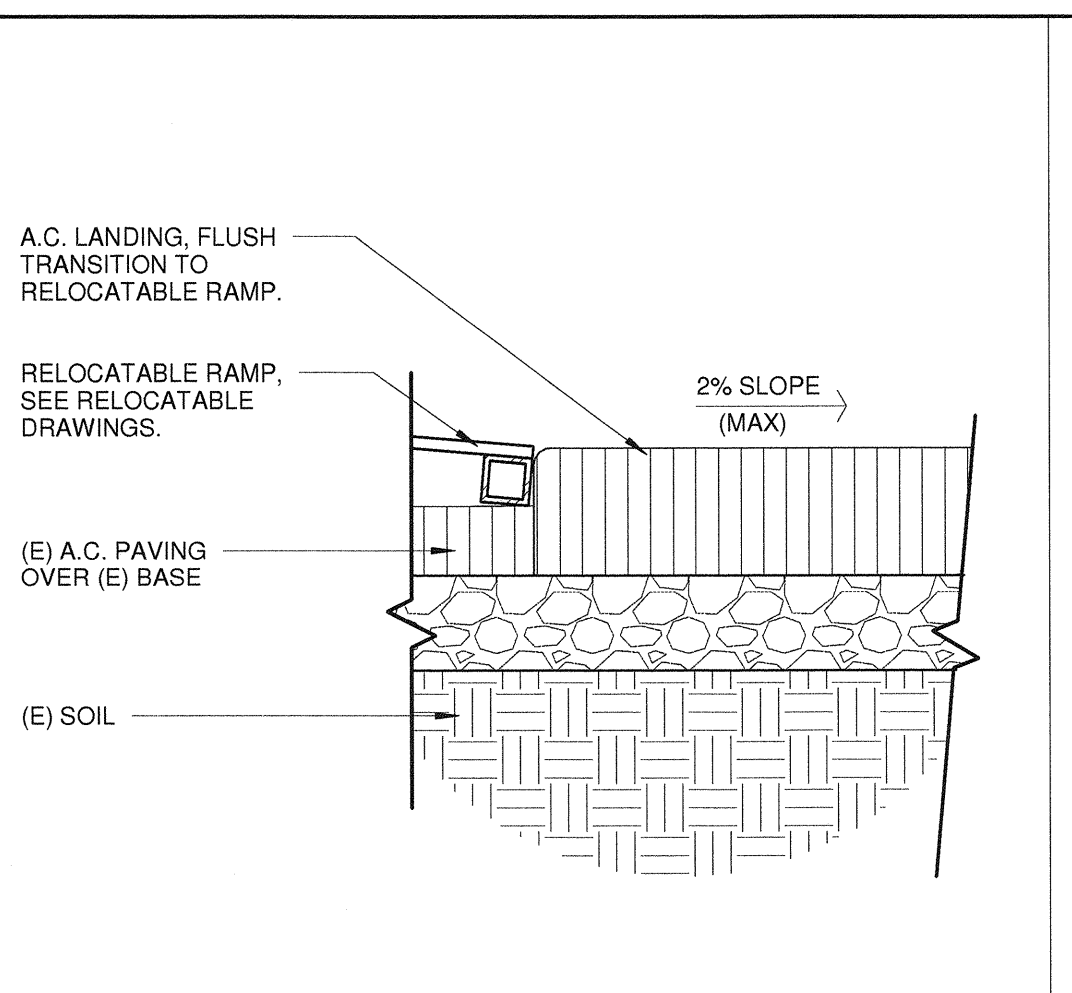
**2 PANEL PLAN** 1 1/2" = 1'-0"



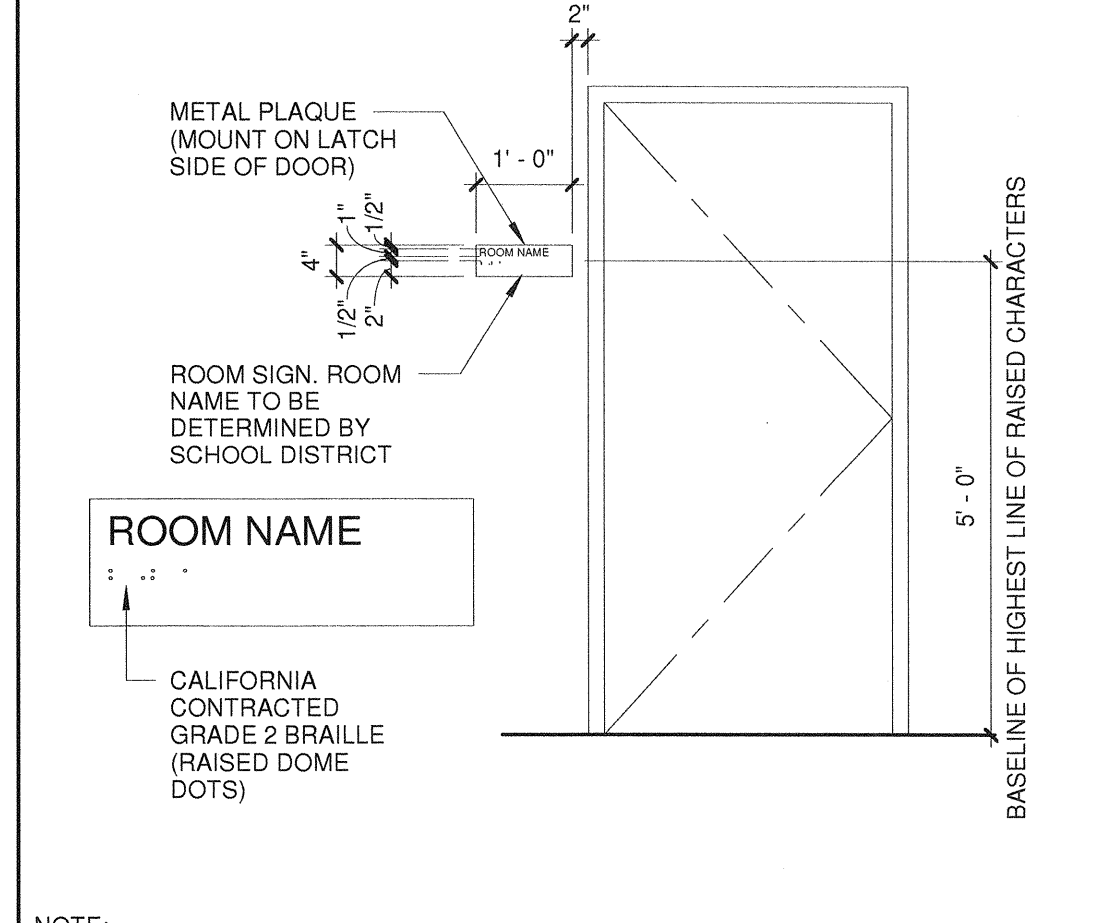
**3 PANEL CAP** 6" = 1'-0"



**4 RAMP LANDING** 1/2" = 1'-0"



**5 CONC. TO RAMP** 1 1/2" = 1'-0"



**6 ROOM SIGNAGE** 1/2" = 1'-0"

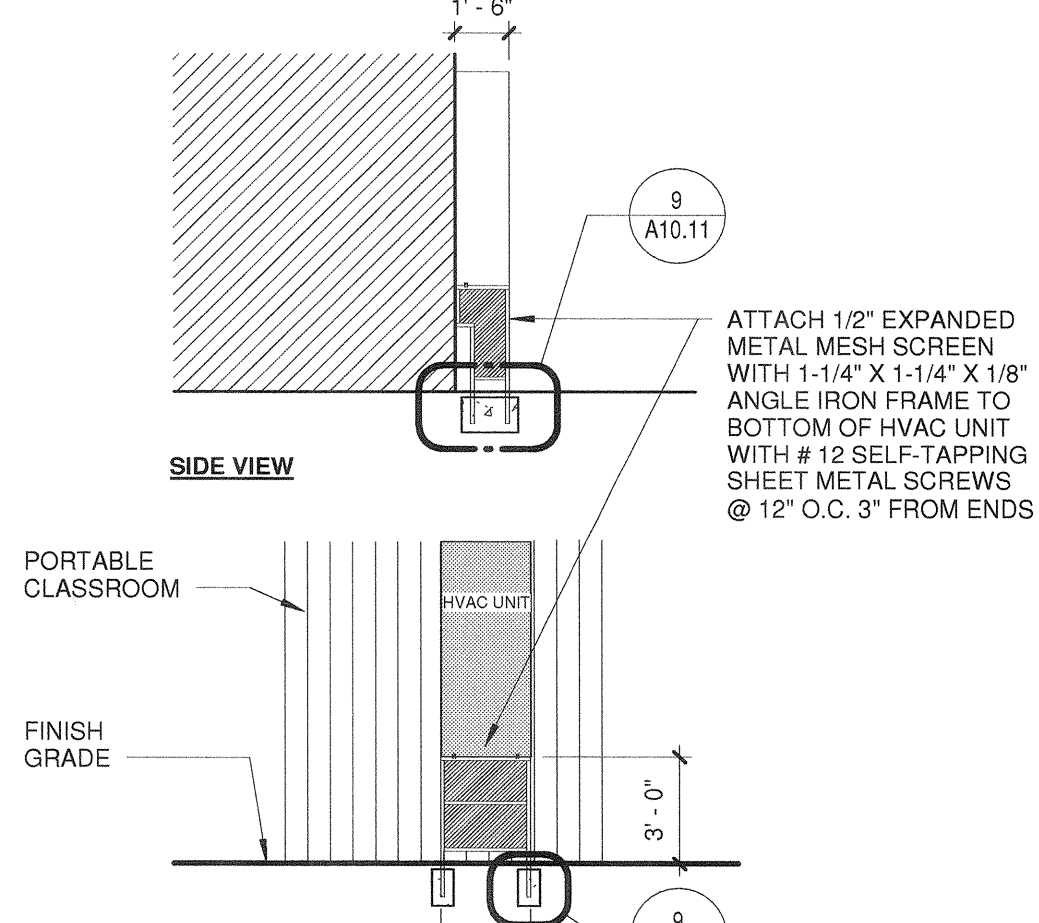
**NOTES APPLICABLE TO SIGNAGE DETAIL 2/A10.10**

- ALL SIGN SUBSTRATES SHALL BE 1/8" THICK REFLECTORIZED ALUMINUM.
- LETTERS AND GRAPHICS SHALL BE SILK SCREENED REFLECTORIZED ALUMINUM.
- ALL SIGNS SHALL BE MOUNTED WITH TAMPER PROOF SCREWS TO GALVANIZED 2" DIAMETER STANDARD STEEL PIPE. PIPE SHALL BE SHOP PRIMED AND PAINTED WITH TWO (2) COATS OF EXTERIOR ENAMEL.
- IN LIEU OF TAMPER PROOF SCREWS, SPOT WELDING END OF BOLT AFTER NUT INSTALLATION IS ACCEPTABLE.
- PROVIDE 3/4" RADIUS AT ALL SIGN CORNERS.
- SIGNS SHALL BE MOUNTED IN A CONSPICUOUS LOCATION.

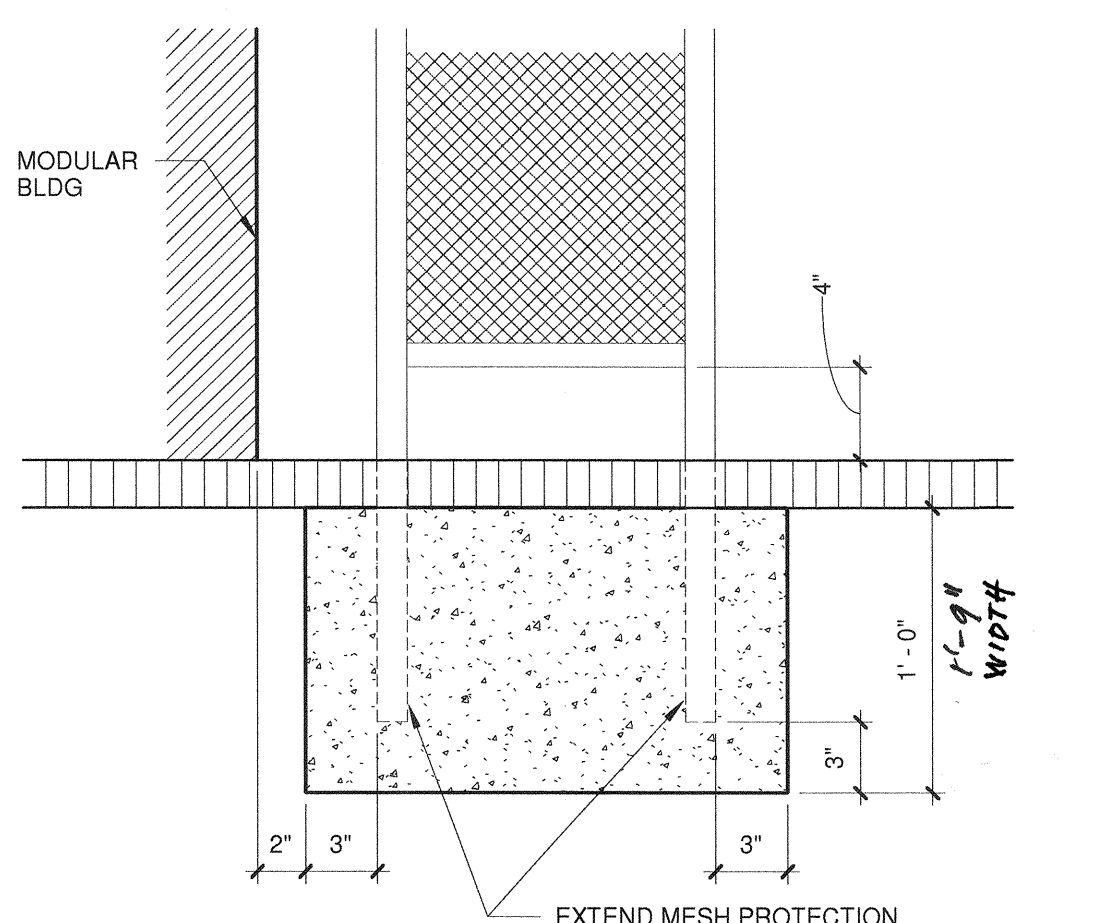
**NOTES APPLICABLE TO BLDG SIGNAGE DETAILS 6/A10.11**

- ALL SYMBOLS AND LETTERS TO BE RAISED 1/32" ABOVE SIGN/PLAQUE SURFACE TYP. (U.O.N.) AND SHALL BE AN INTEGRAL PART OF THE SIGN. CONTRAST BETWEEN SYMBOLS, LETTERS, CHARACTERS AND BACKGROUND MUST BE 70% MIN.
- ALL SIGNS TO HAVE A COLOR WHICH CONTRASTS 70% MIN. WITH DOOR COLOR.
- ALL PLAQUES TO HAVE A COLOR WHICH CONTRASTS WITH THE WALL ADJACENT TO THE LATCH SIDE OF THE DOOR. REFER TO ABOVE DETAIL (ACCESSIBILITY SIGN(S) LOCATION AND ELEVATION) FOR SIGN/PLAQUE LOCATION INFORMATION.
- CALIFORNIA GRADE 2 BRAILLE DOTS SHALL BE 1/10" (2.54mm) ON CENTERS IN EACH CELL WITH 2/10" (5.08 mm) SPACE BETWEEN CELLS. DOTS SHALL BE RAISED A MIN. OF 1/40" (0.885 mm) ABOVE THE BACKGROUND.
- ALL SIGNS AND IDENTIFICATION SHALL COMPLY WITH TITLE 24, SECTION 1117B.5 THRU 1117B.5.10.

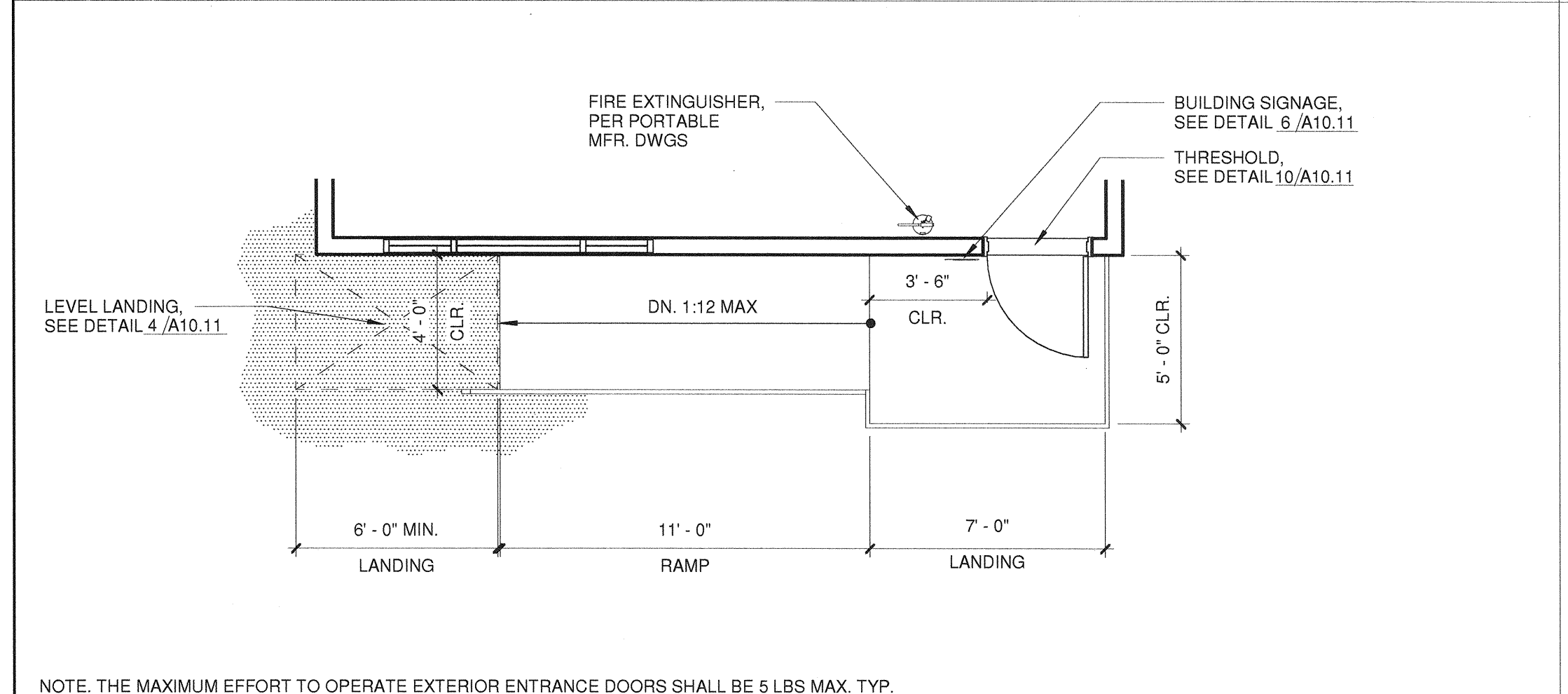
**7 SIGNAGE NOTES** 1/8" = 1'-0"



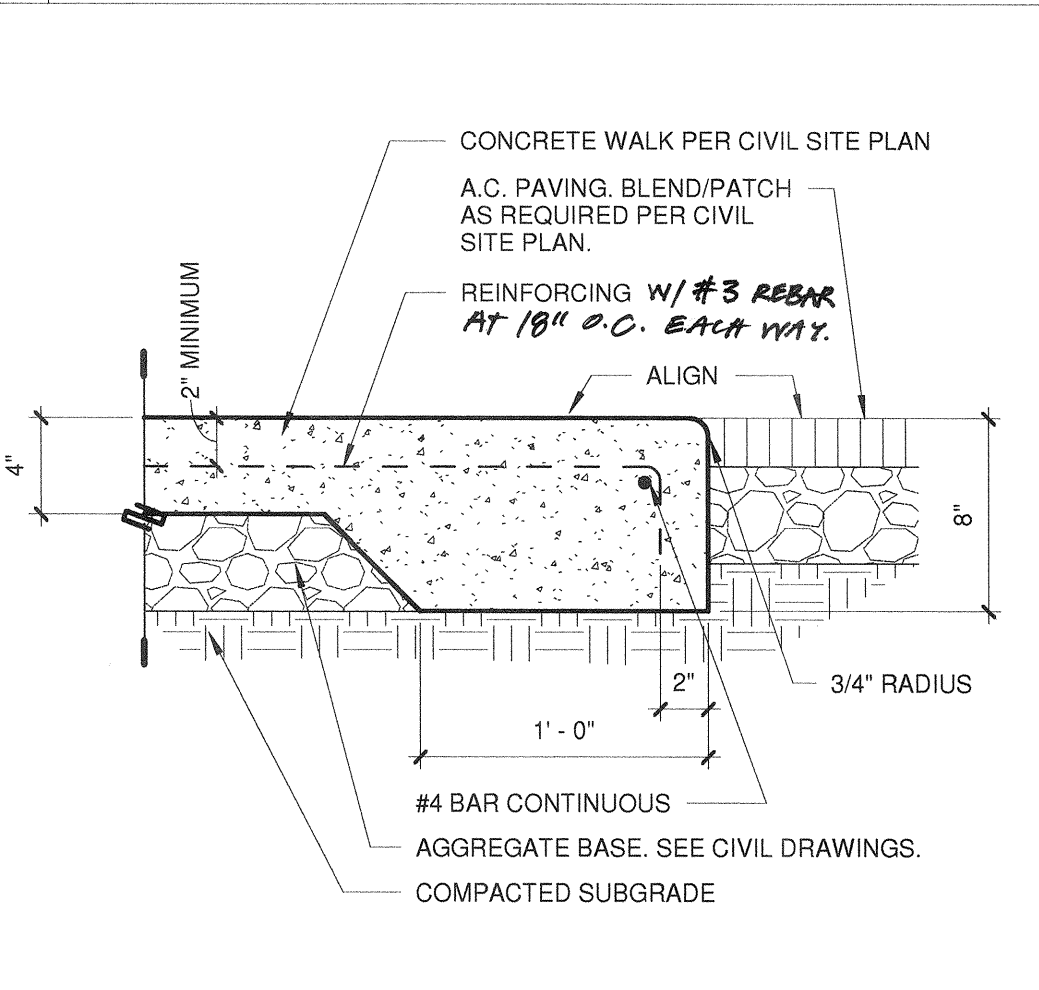
**8 MESH SCREEN** 3/16" = 1'-0"



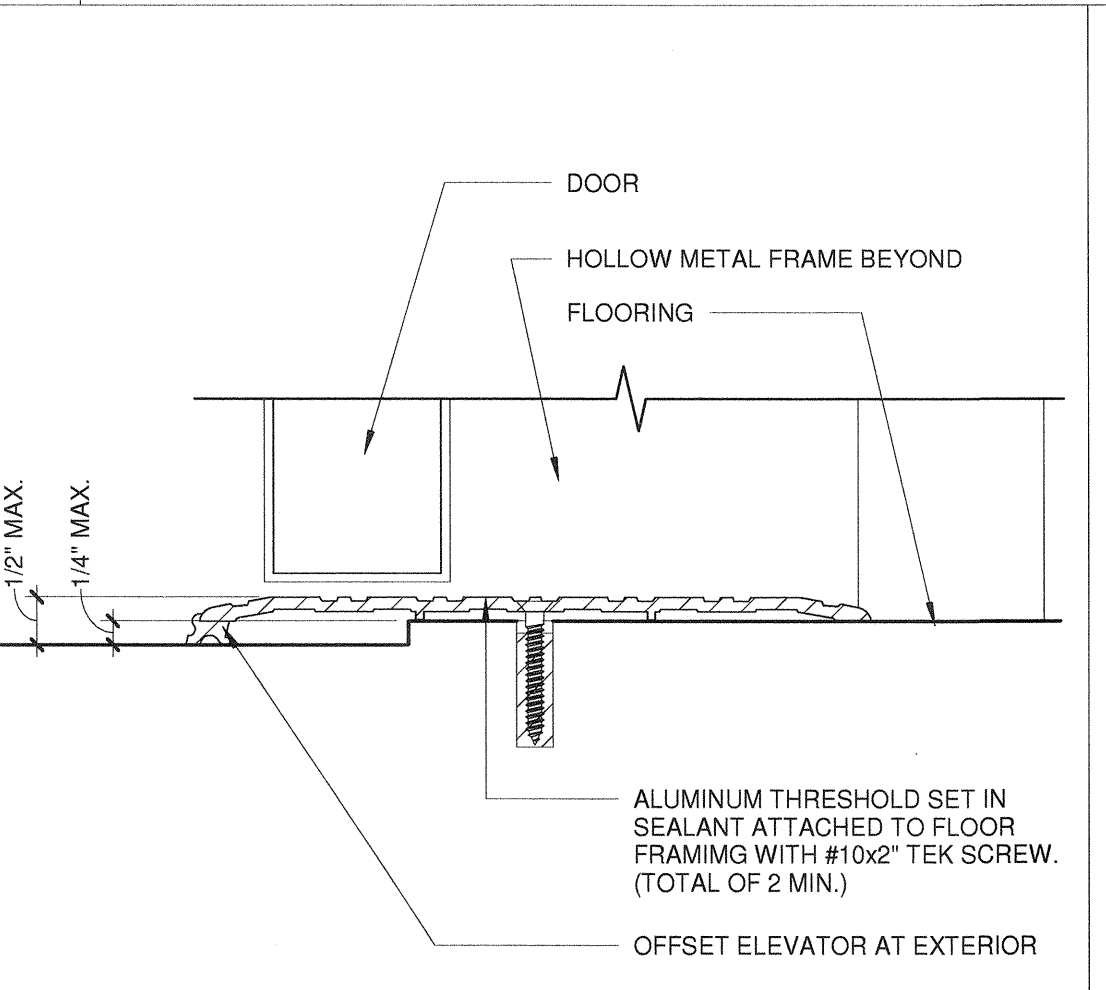
**9 MESH SCREEN BASE** 1 1/2" = 1'-0"



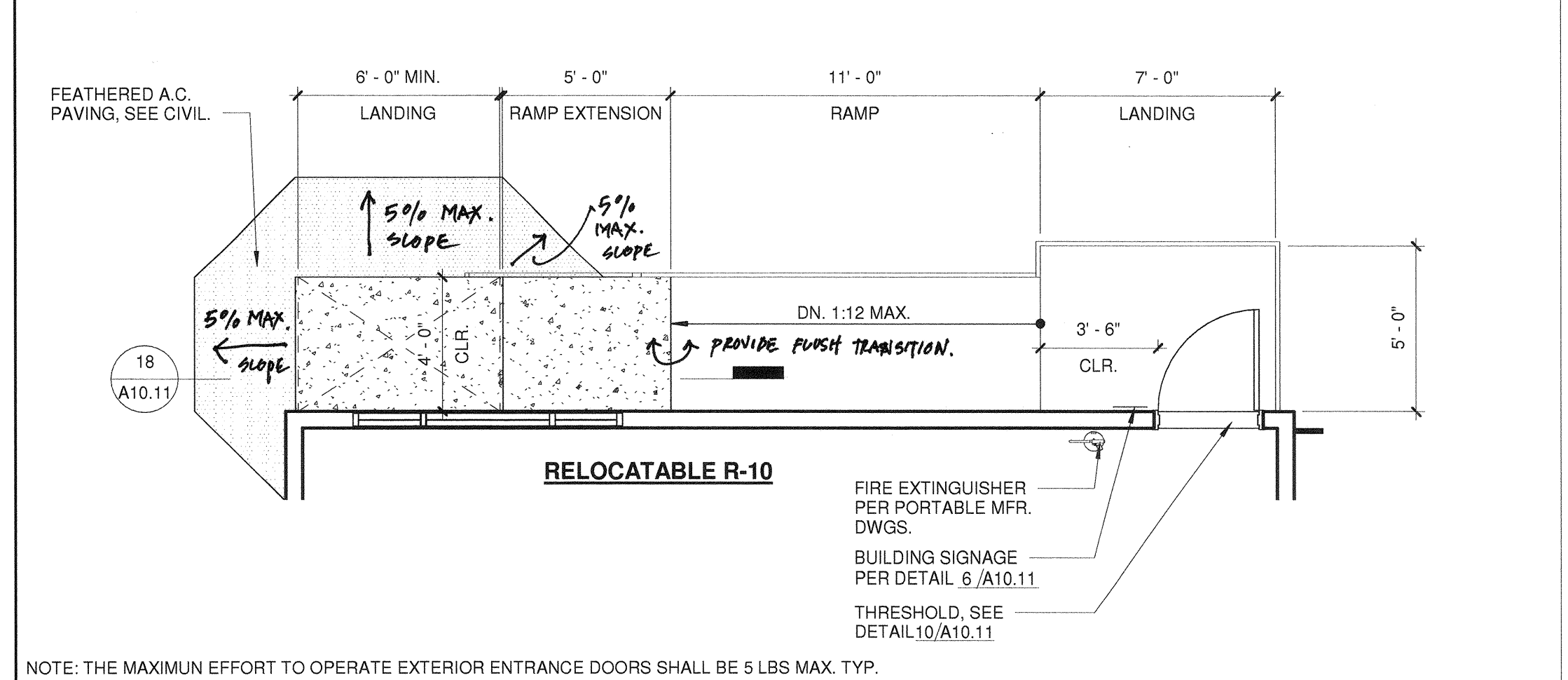
**11 ENLARGED RAMP @ R-11 & R-12 RELOCATABLE** 1/4" = 1'-0"



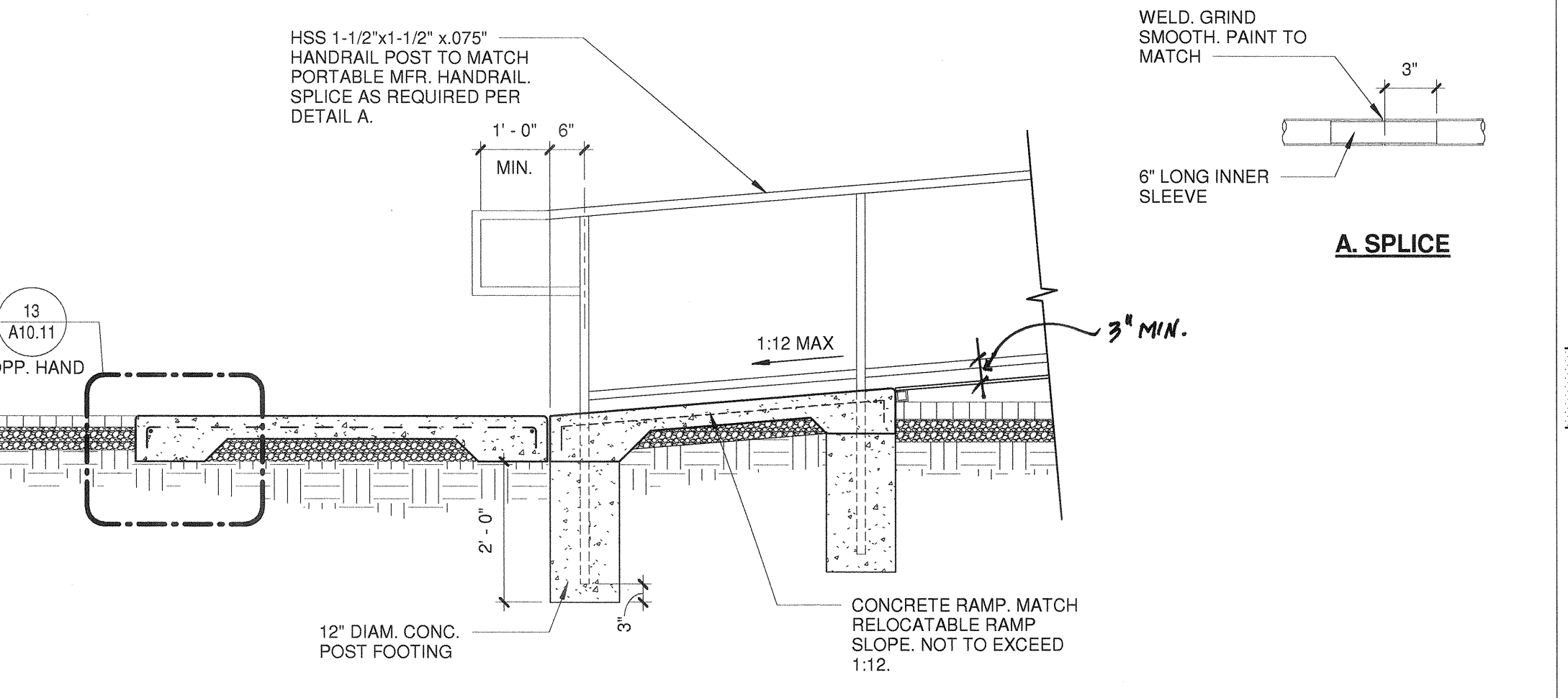
**13 WALK @ AC PAVING** 1 1/2" = 1'-0"



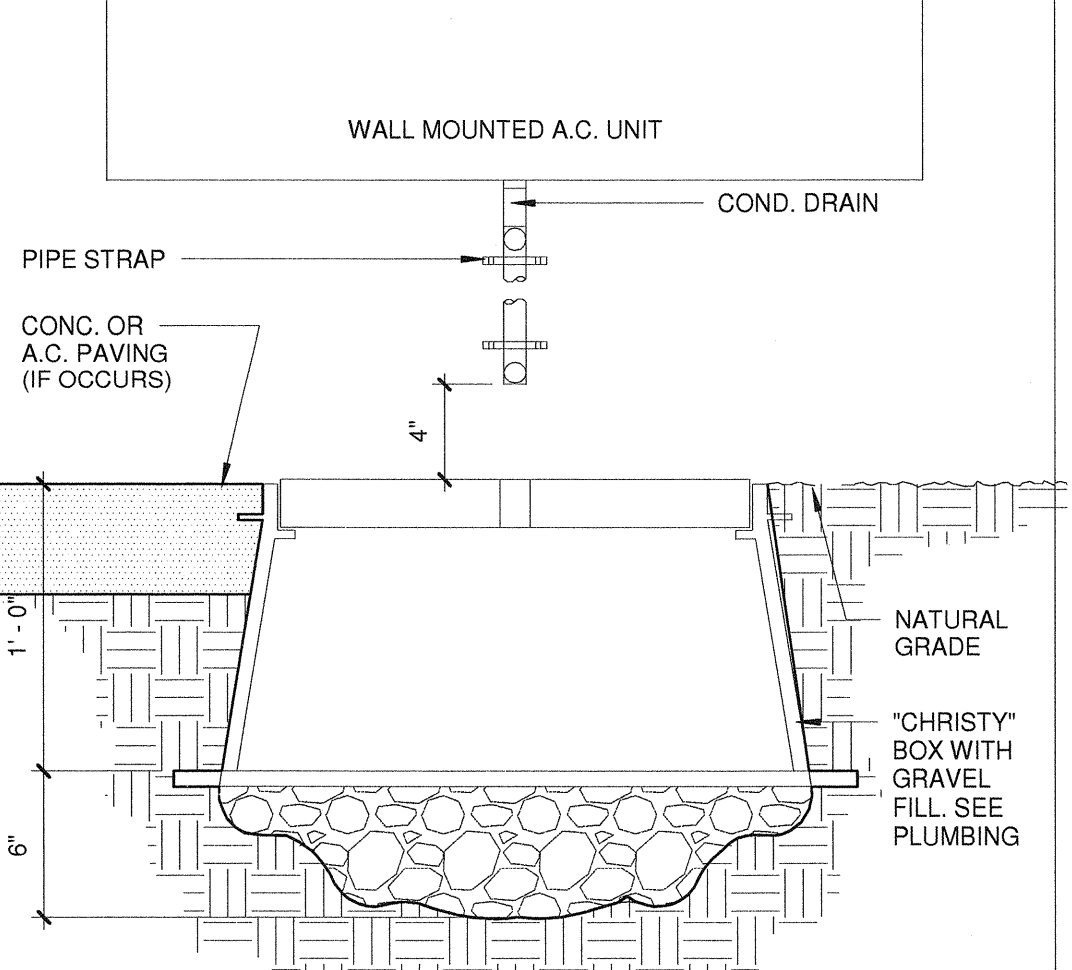
**10 THRESHOLD** 6" = 1'-0"



**16 ENLARGED RAMP @ R-10 RELOCATABLE** 1/4" = 1'-0"



**18 RAMP SECTION @ R-10** 1/2" = 1'-0"



**20 DRYWELL** 1 1/2" = 1'-0"

PRIME CONSULTANT

**IBI** ARCHITECTURE PLANNING

San Luis Obispo  
4119 Broad Street, Suite 210  
San Luis Obispo, CA 93401  
805.546.0433 fax: 805.546.0504

SEAL

LICENSED ARCHITECT  
RICHARD M. IBI  
NO. C18079  
REN. 10/17  
STATE OF CALIFORNIA

**COPYRIGHT:**  
Any reproduction or distribution for any purpose other than authorized by IBI Group is forbidden.

COPYRIGHT 2016 IBI GROUP

REVISIONS

NO.	DATE	APPRD.	DESCRIPTION

CONSULTANT

AGENCY INFORMATION:

AGENCY TRACKING NO. 63321-243  
FILE NO. 15-6

IDENTIFICATION STAMP  
DIV. OF THE STATE ARCHITECT  
OFFICE OF REGULATION SERVICES  
03-117549  
AG. FLS. M. SS. TN  
DATE OCT 11 2016

BAKERSFIELD CITY SCHOOL DISTRICT

**CHIPMAN JR. HIGH NEW RELOCATABLES (3)**

2905 EISSLER ST  
BAKERSFIELD, CA 93306

OPSC or OSHPD PROJ. NO.:

PROJECT NO: 16166.000

DRAWN BY: rRr

CHK'D BY: RM

ISSUE DATE: 10/05/2016

SHEET TITLE

**DETAILS**

SHEET NUMBER

**A10.11**

CONSTRUCTION DOCUMENTS

PLOT DATE: 9/28/2016 2:16:24 PM J:\16166\_BC\_Chipman3.s3 Drawings\Barch\current\ATW-16166-Asite\_Chipman3.rvt