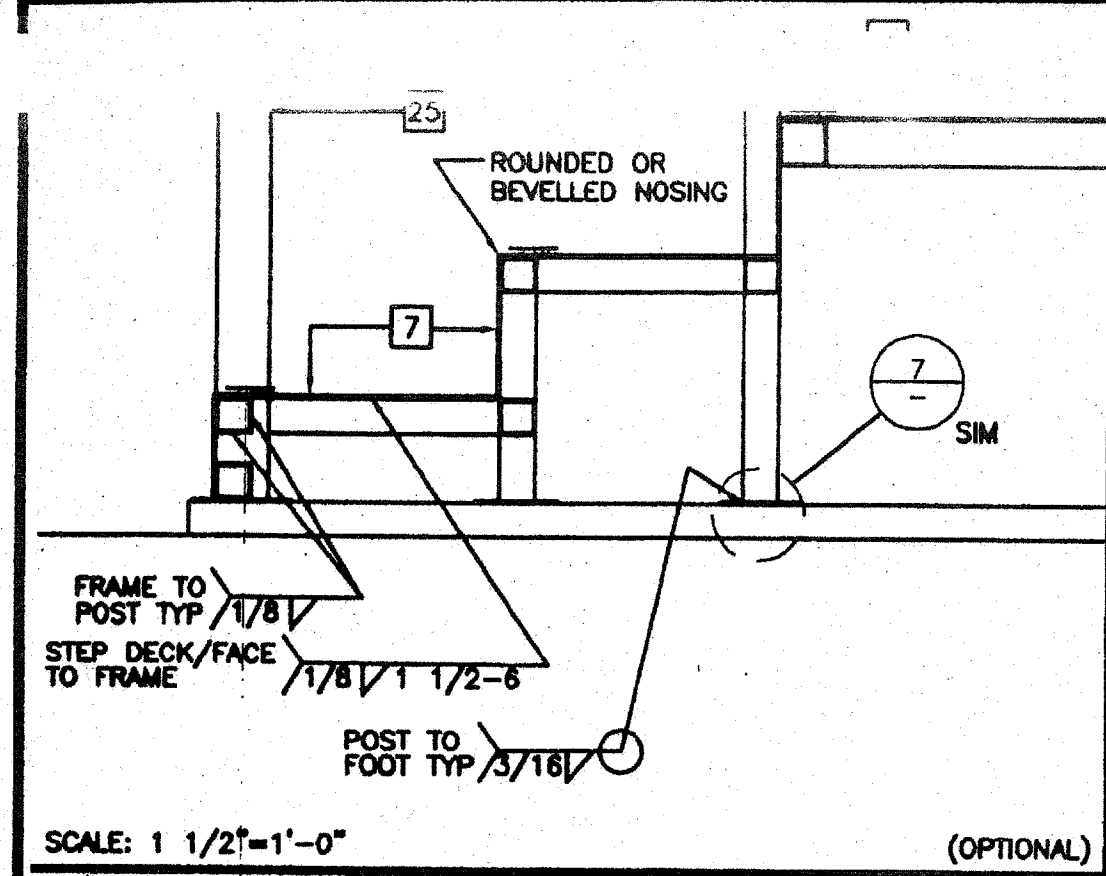
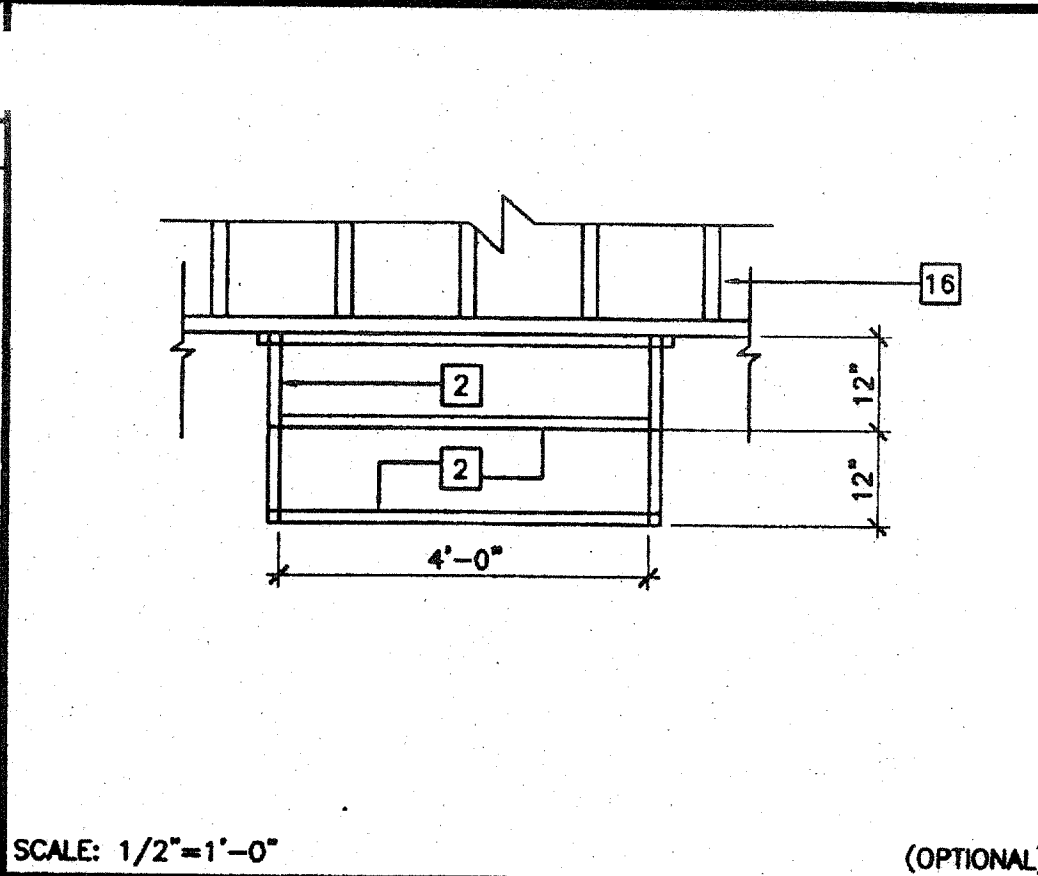


KEY NOTES

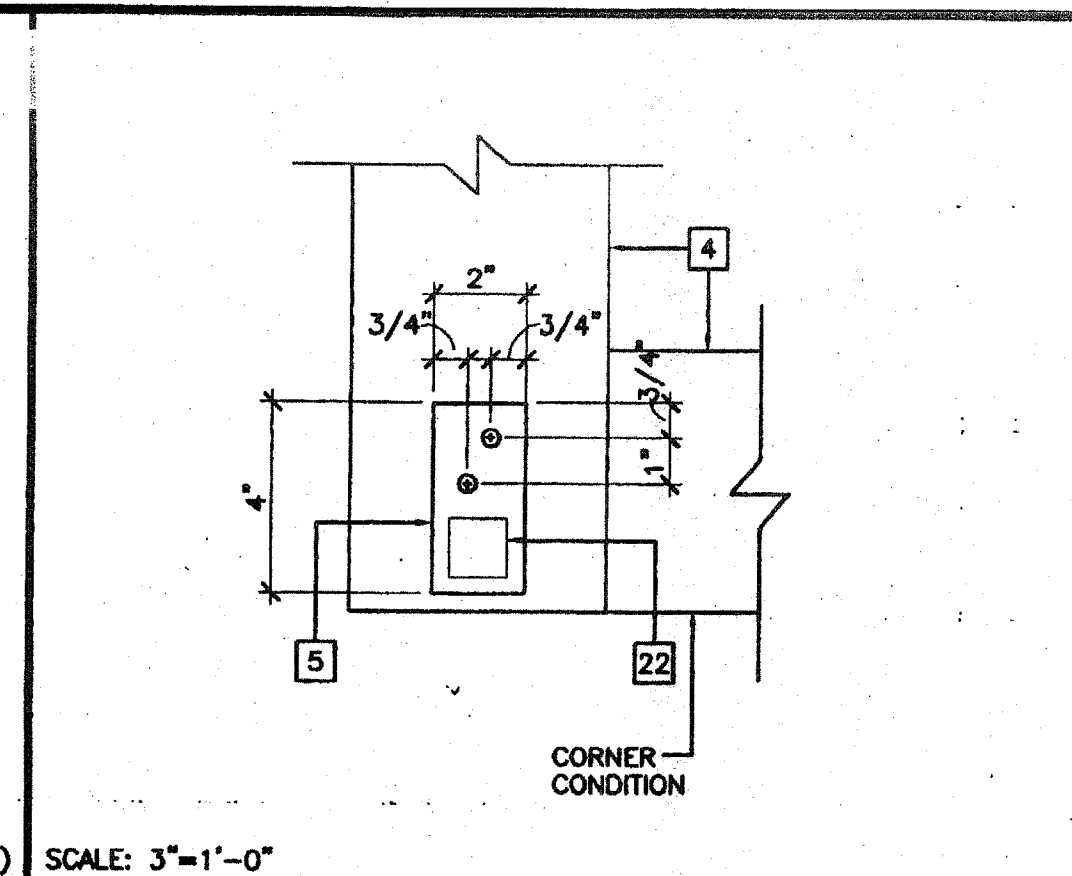
- 1 TS 2"x2"x14 GA
- 2 TS 1 1/2"x1 1/2"x14 GA (Fy = 39 KSI). EASED OR ROUNDED CORNERS.
- 3 TS 1"x1"x16 GA WHEELCHAIR GUIDE
- 4 2"x6" PRESSURE TREATED SILL PLATE
- 5 2"x4"x12 GA BASE PLATE WITH 2-1/4"x1" LAGS
- 6 SKIRTING: PLYWOOD TO MATCH BUILDING SIDING. BLOCK ALL EDGES. ATTACH WITH 8d AT 6" OC EDGES AND 12" OC FIELD. AT EDGE CONNECTION TO TS. USE #14x2" TEK SCREWS AT 6" OC
- 7 12GA METAL DECK: NON-SLIP SURFACE. DESIGN COEFFICIENT OF FRICTION GREATER THAN 0.7 C.O.F. MAINTAINABLE FOR 1 YR. PROVIDE ROUNDED OR BEVELED EDGES ON STAIR NOSING
- 8 EXISTING BUILDING.
- 9 6"x10"x12 GA BASE PLATE AT RAMP TOE.
- 10 LOWER LANDING BY DISTRICT
- 11 RAMP BY MODTECH **RAMP**
- 12 FLUSH TRANSITION
- 13 PAVE BY DISTRICT
- 14 3"x1"x3'-0"x10 GA BENT PLATE
- 15 FASTEN POSTS WITH 3/8" DIA THRU BOLT, TYPICAL
- 16 RAMP LANDING, TYPICAL
- 17 26 GA FLASHING
- 18 3/8" DIAx2" LONG MB WITH NUT & WASHERS
- 19 CAULKING
- 20 5"x10GA CONTINUOUS PLATE WITH #14x2" TEK SCREWS AT 9" OC INTO WOOD OR FOUNDATION BLOCKS OR #14x2" TEK SCREWS INTO METAL AT 9" OC
- 21 PROVIDE DIVERSION FOR WATER FROM DOWNSPOUT FOR THIS CONDITION. BY DISTRICT
- 22 TS 1 1/4"x1 1/4"x14 GA. (Fy = 39 KSI)
- 23 4" MINIMUM BUILDING SEPARATION
- 24 2" SLIP RESISTANT WARNING STRIPES MAX 1" FROM EVERY STAIR NOSING. USE CONTRASTING COLOR.
- 25 TS 2 1/2"x1 1/2"x8 GA ASTM A500 GRADE A
- 26 2"x2" NAILER WITH 16d AT 12" OC
- 27 RAMP WIDTH MINIMUM CLEAR DIMENSION IS 4'-0" IF AT LEAST TWO EXIT/DISCHARGE ARE REQUIRED OR 5'-0" IF ONLY ONE EXIT/DISCHARGE IS REQUIRED. SEE CBC11338.5.2.2



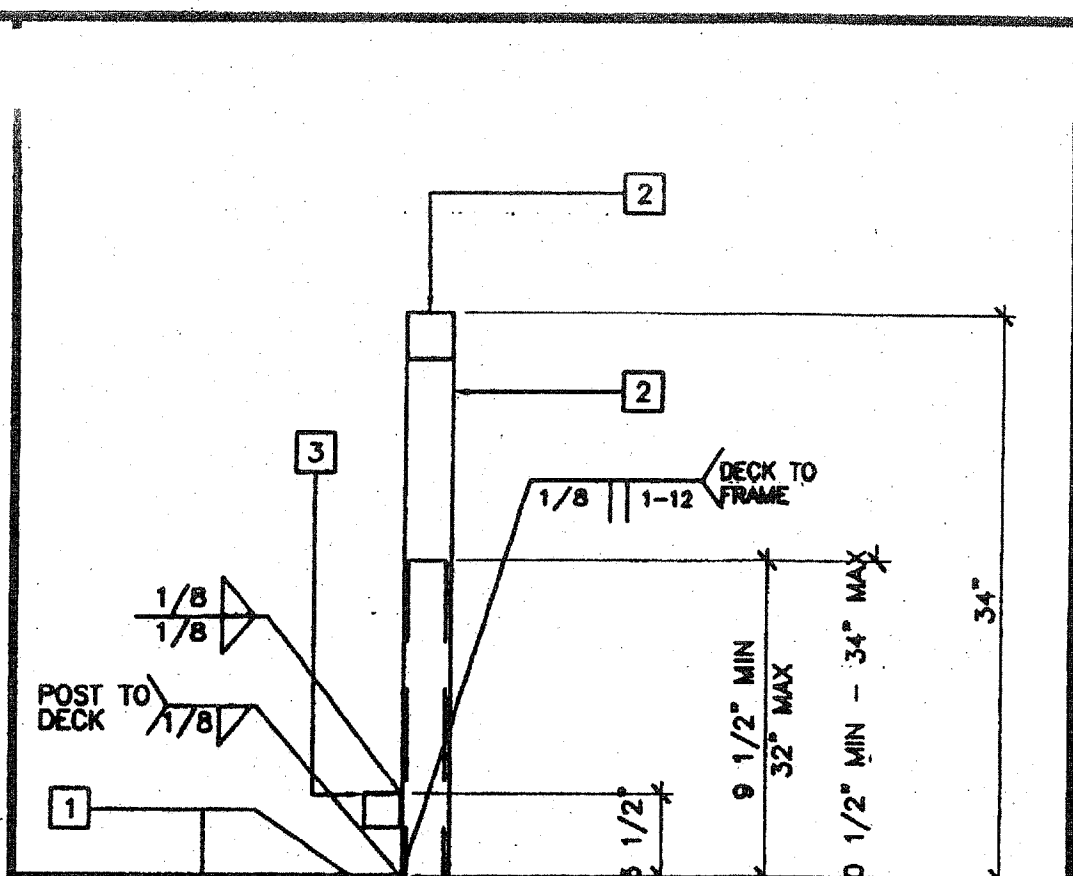
SCALE: 1 1/2"=1'-0" (OPTIONAL)
STAIR SECTION 16



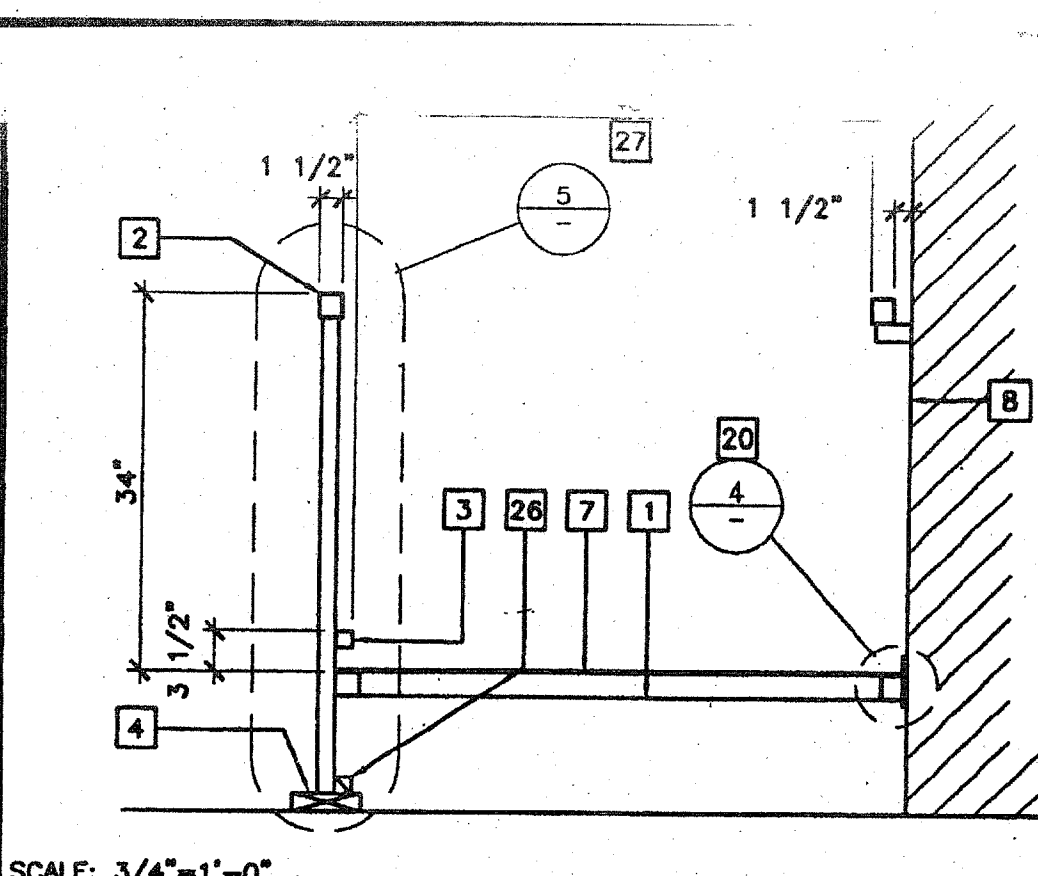
SCALE: 1/2"=1'-0" (OPTIONAL)
STAIR FRAMING PLAN 12



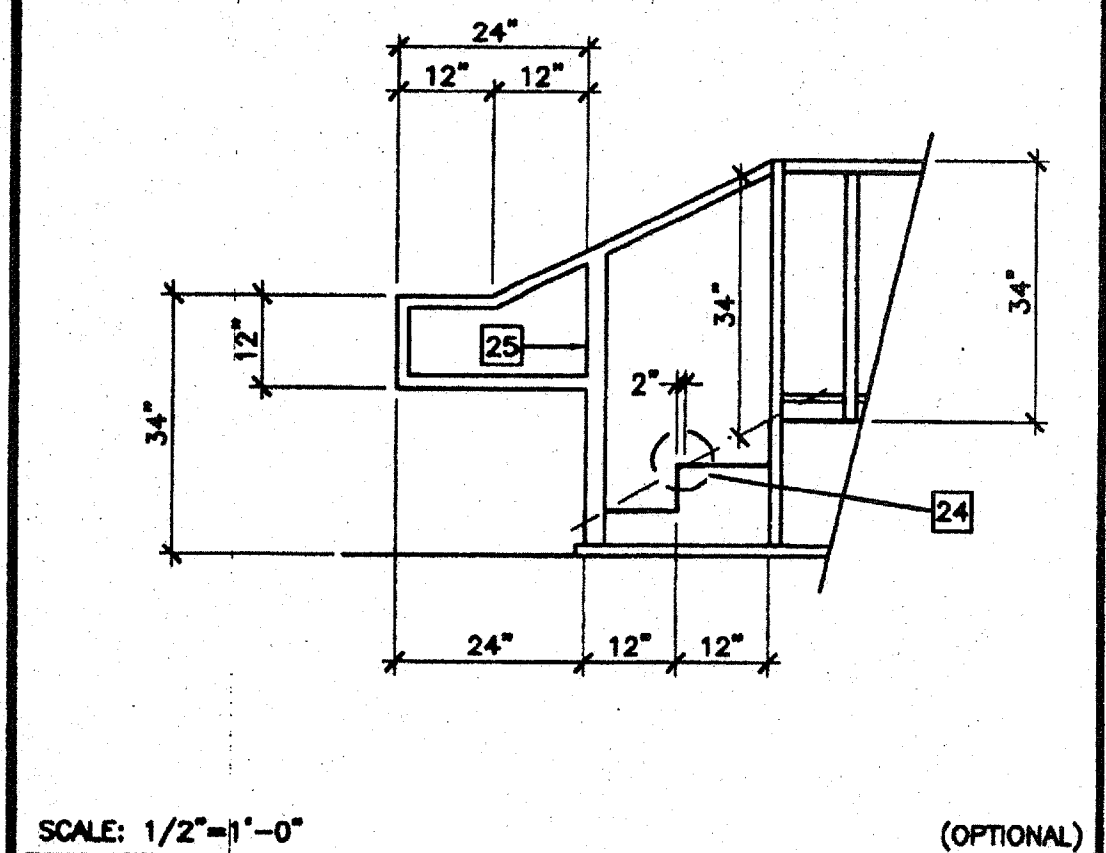
SCALE: 3"=1'-0" (OPTIONAL)
ADJUSTABLE LEG BASE PLATE 8



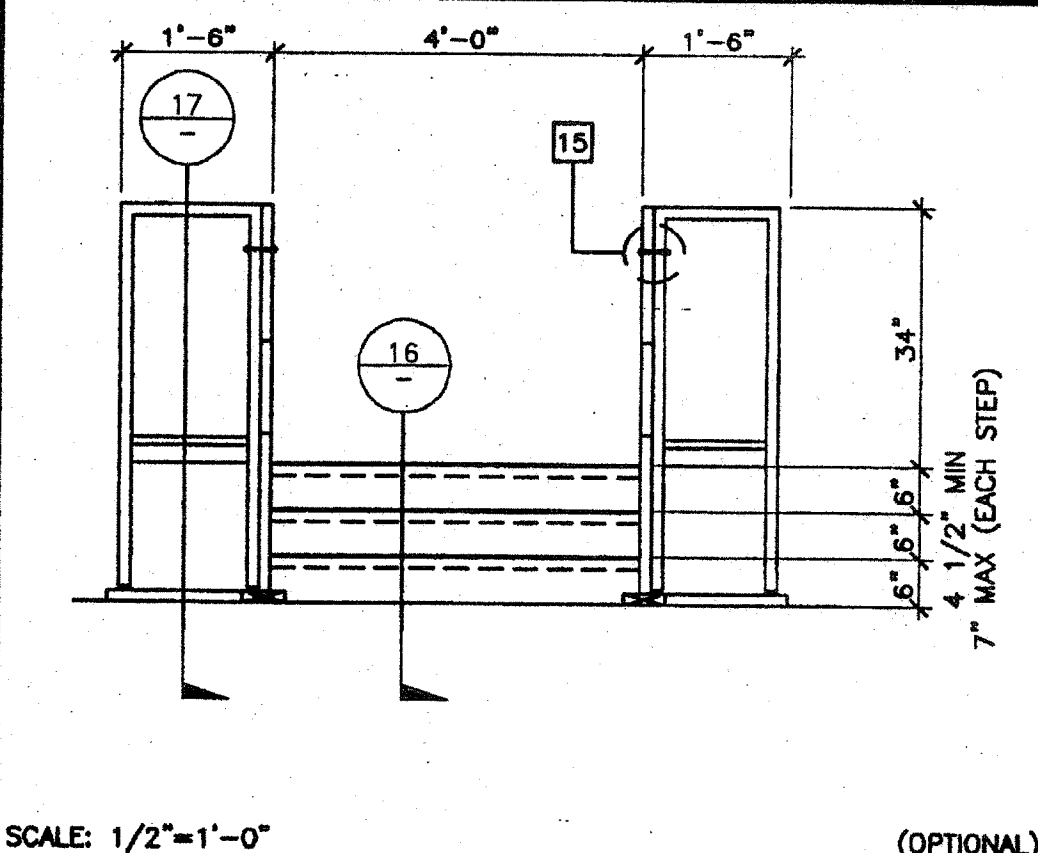
SCALE: 3"=1'-0"
ADJUSTABLE LEG 5



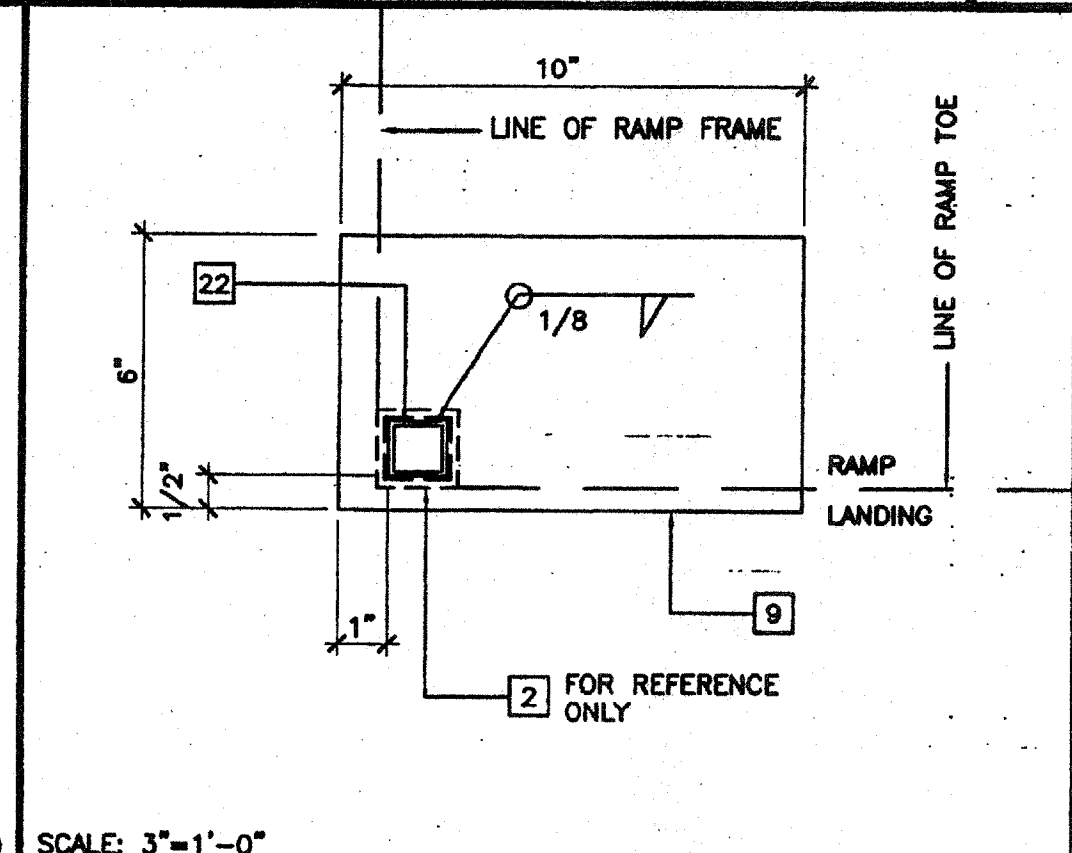
SCALE: 3/4"=1'-0"
SECTION AT RAMP 1



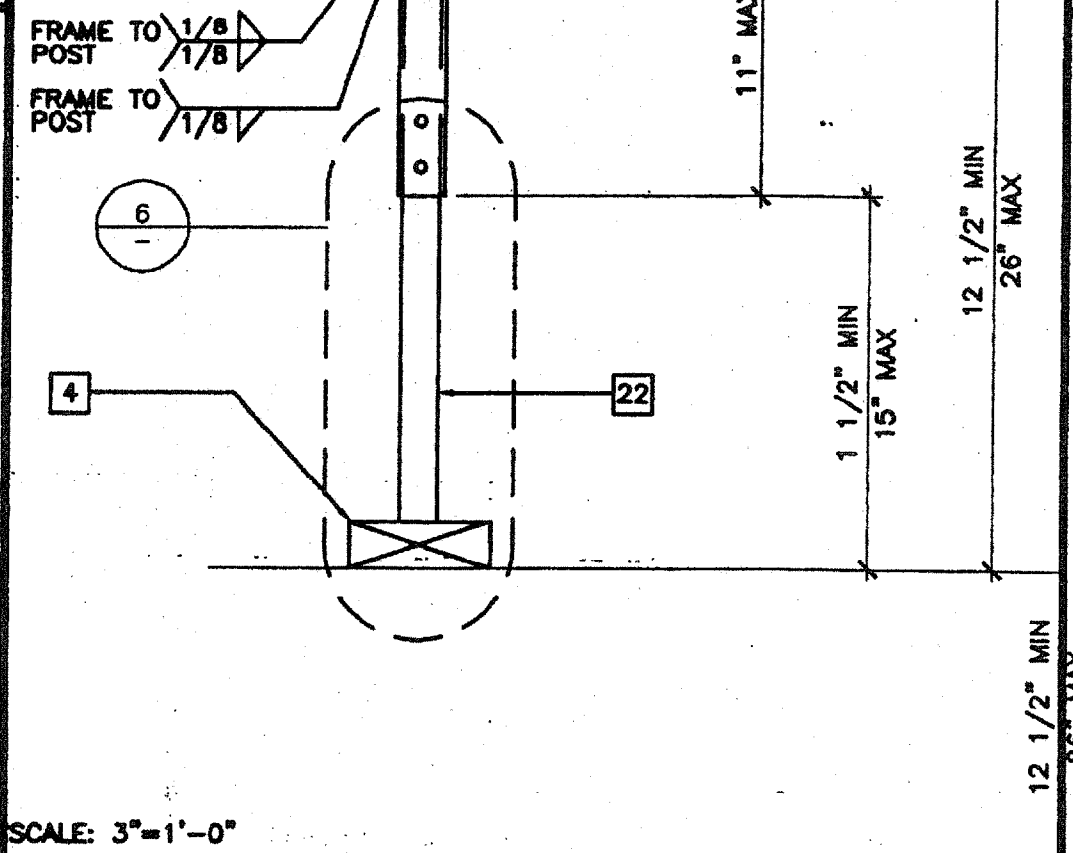
SCALE: 1/2"=1'-0" (OPTIONAL)
STAIR ELEVATION 17



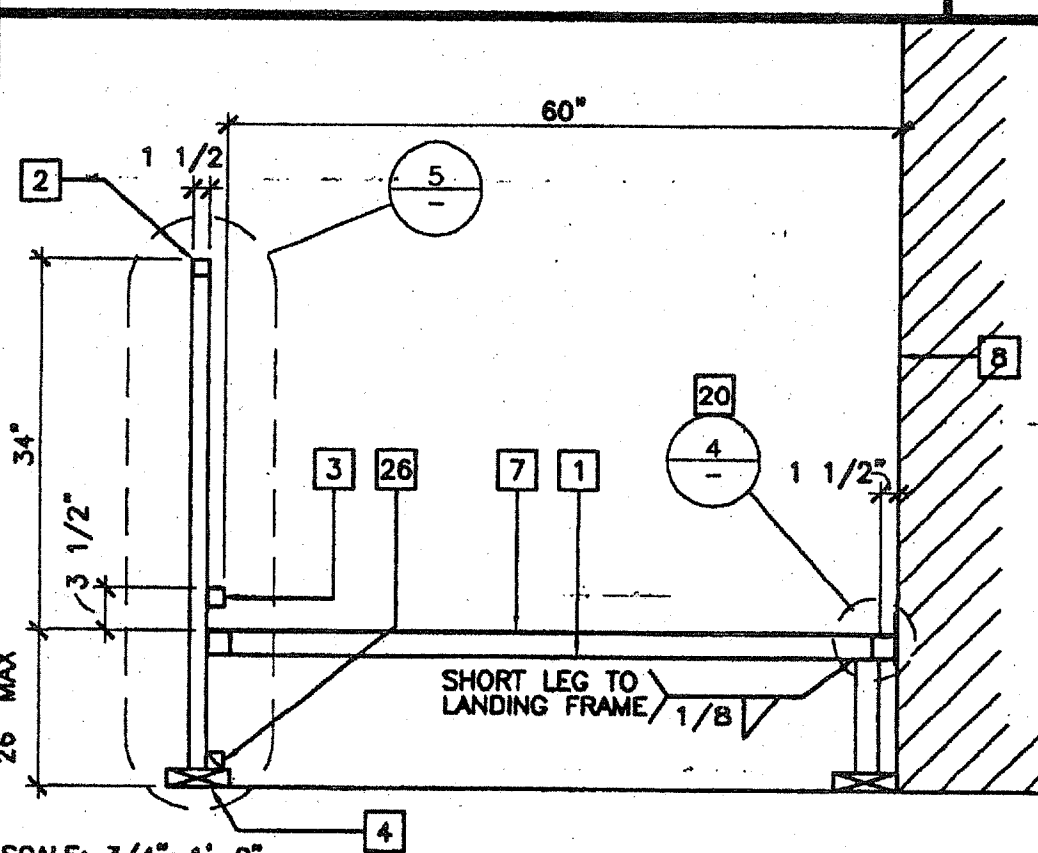
SCALE: 1/2"=1'-0" (OPTIONAL)
STAIR ELEVATION 13



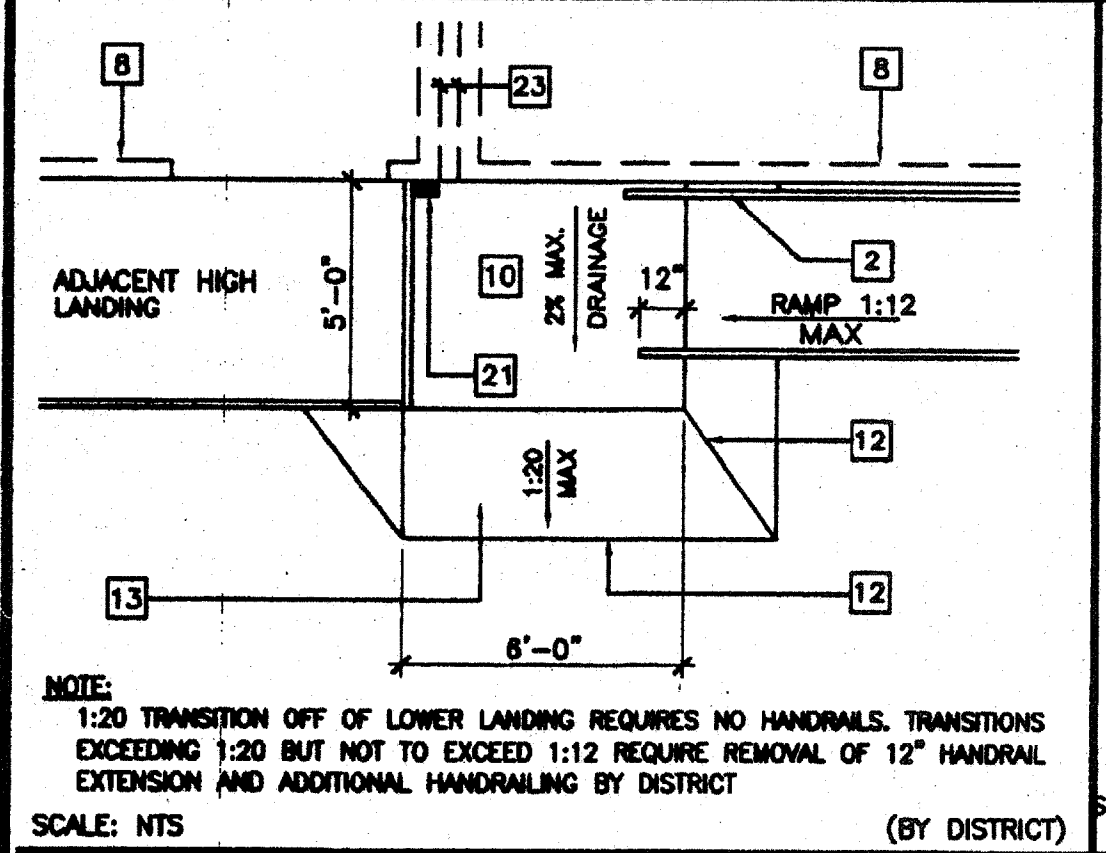
SCALE: 3"=1'-0"
BASE PLATE AT RAMP TOE 9



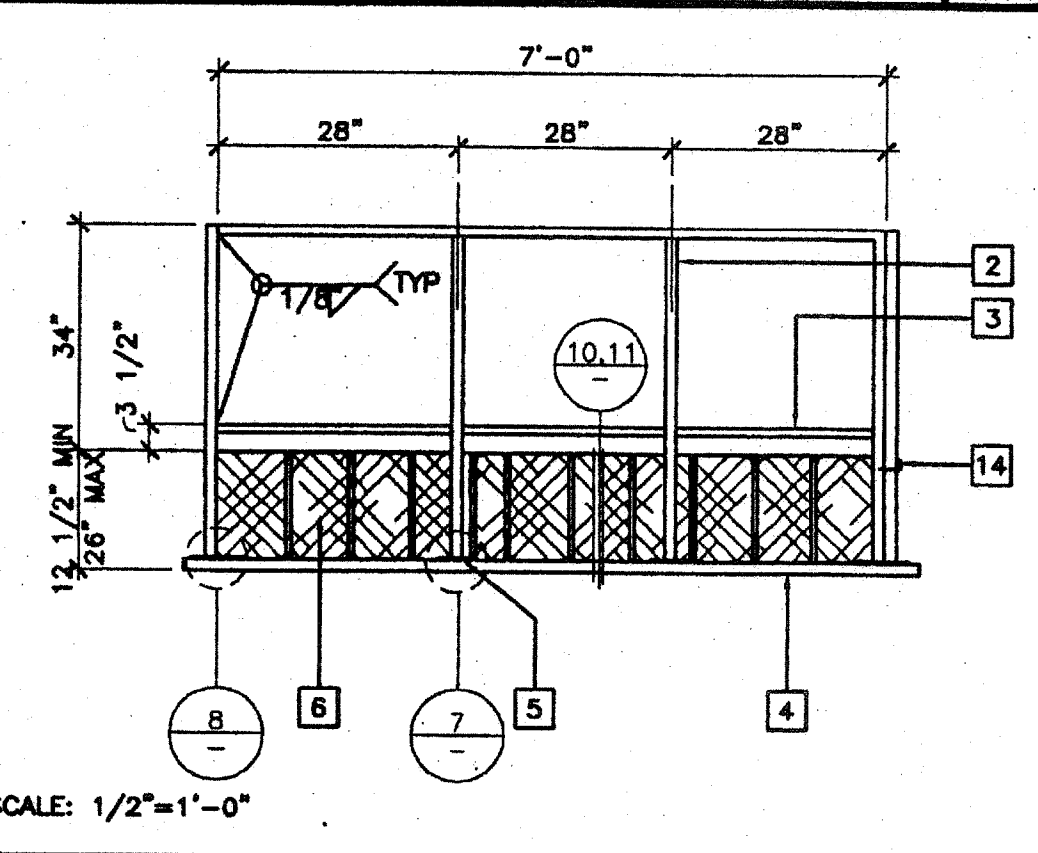
SCALE: 3"=1'-0"
ADJUSTABLE LEG 6



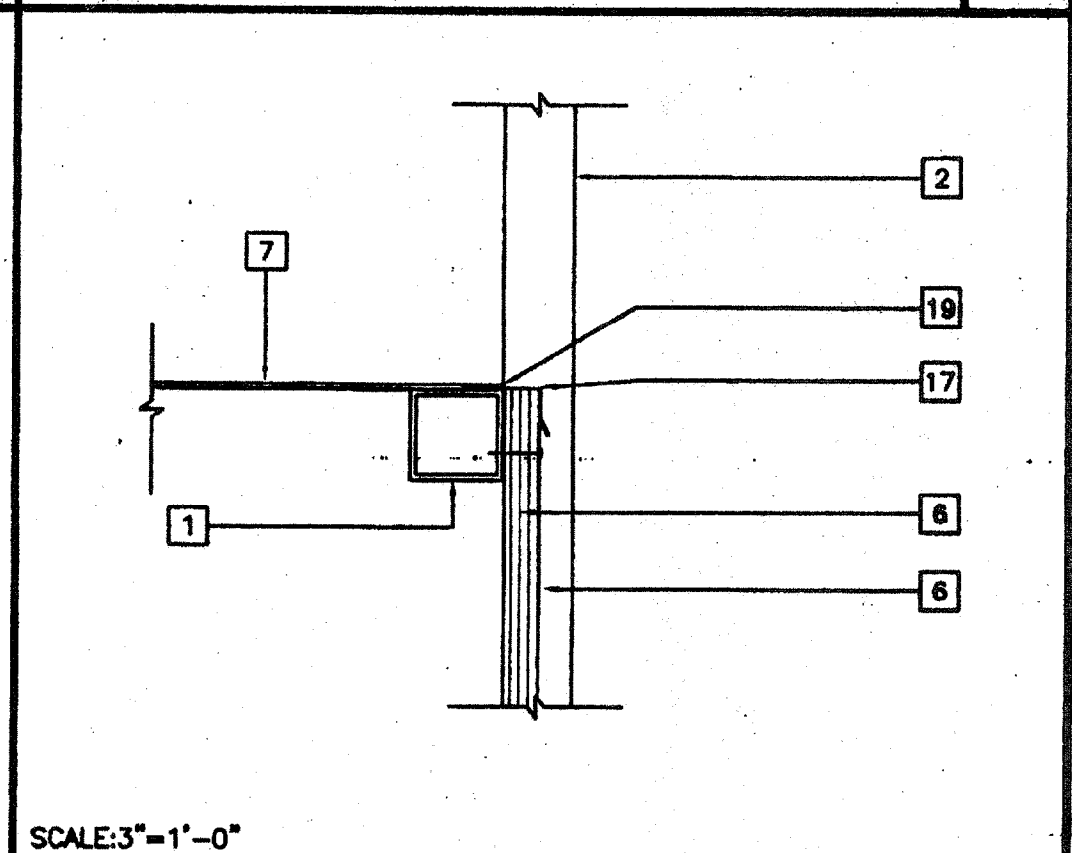
SCALE: 3/4"=1'-0"
SECTION AT LANDING 2



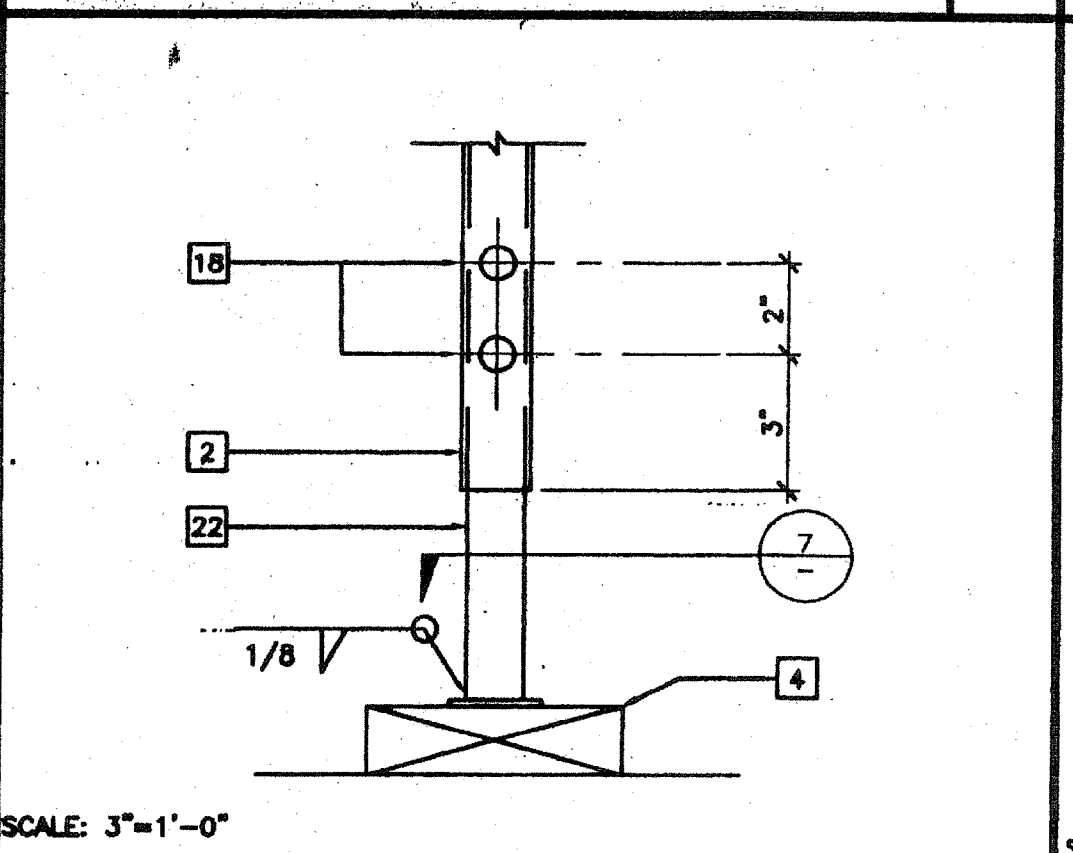
SCALE: NTS (BY DISTRICT)
RAMP TRANSITION 18



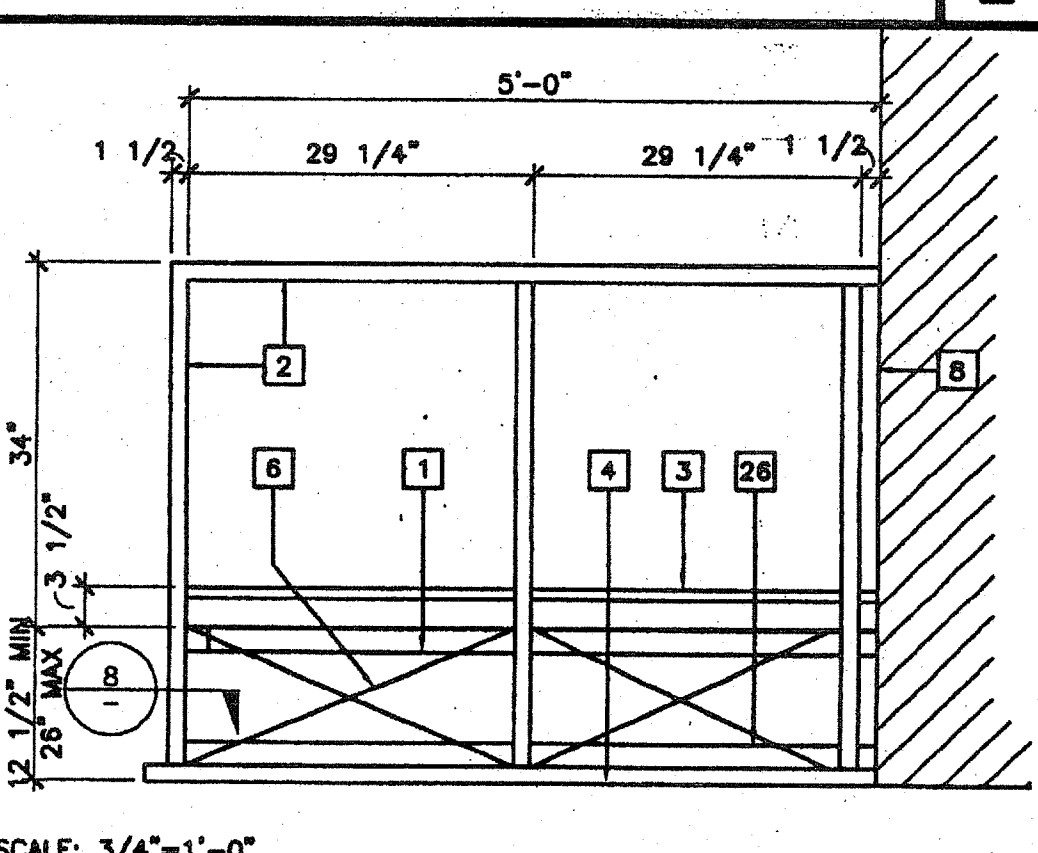
SCALE: 1/2"=1'-0"
LANDING ELEVATION 14



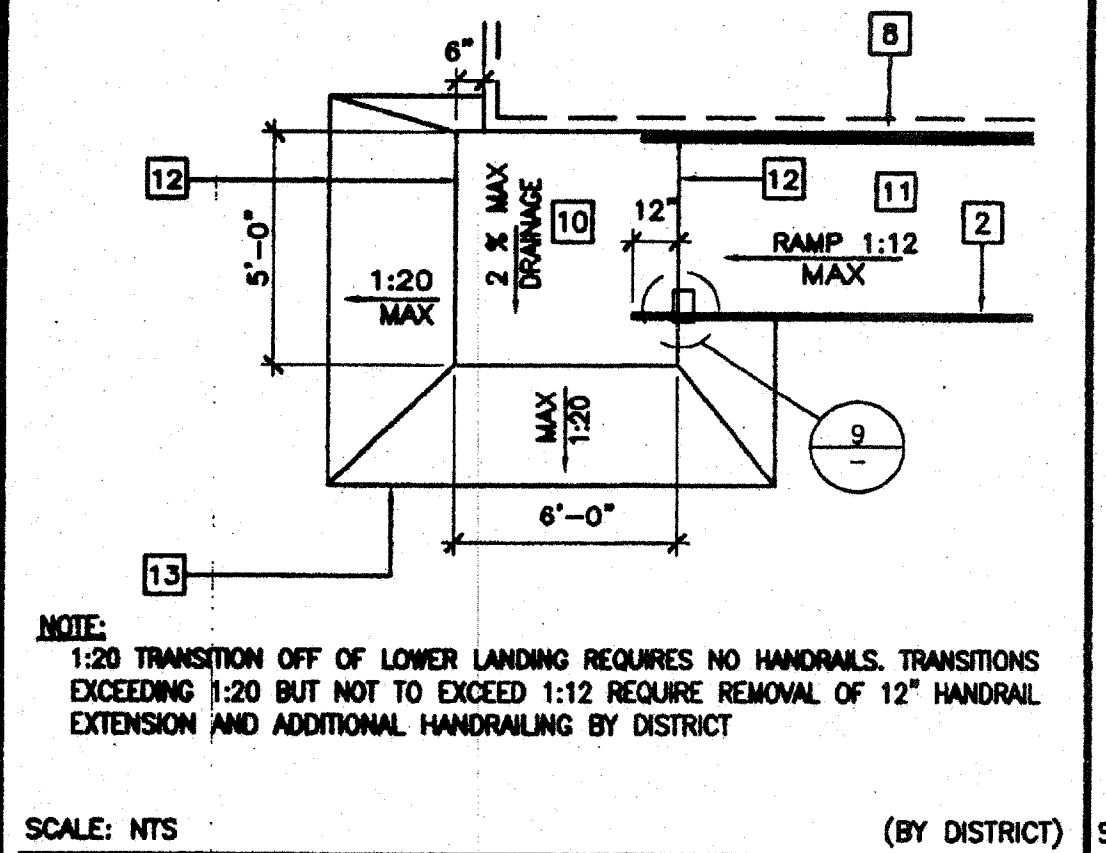
SCALE: 3"=1'-0"
SKIRT FLASHING 10



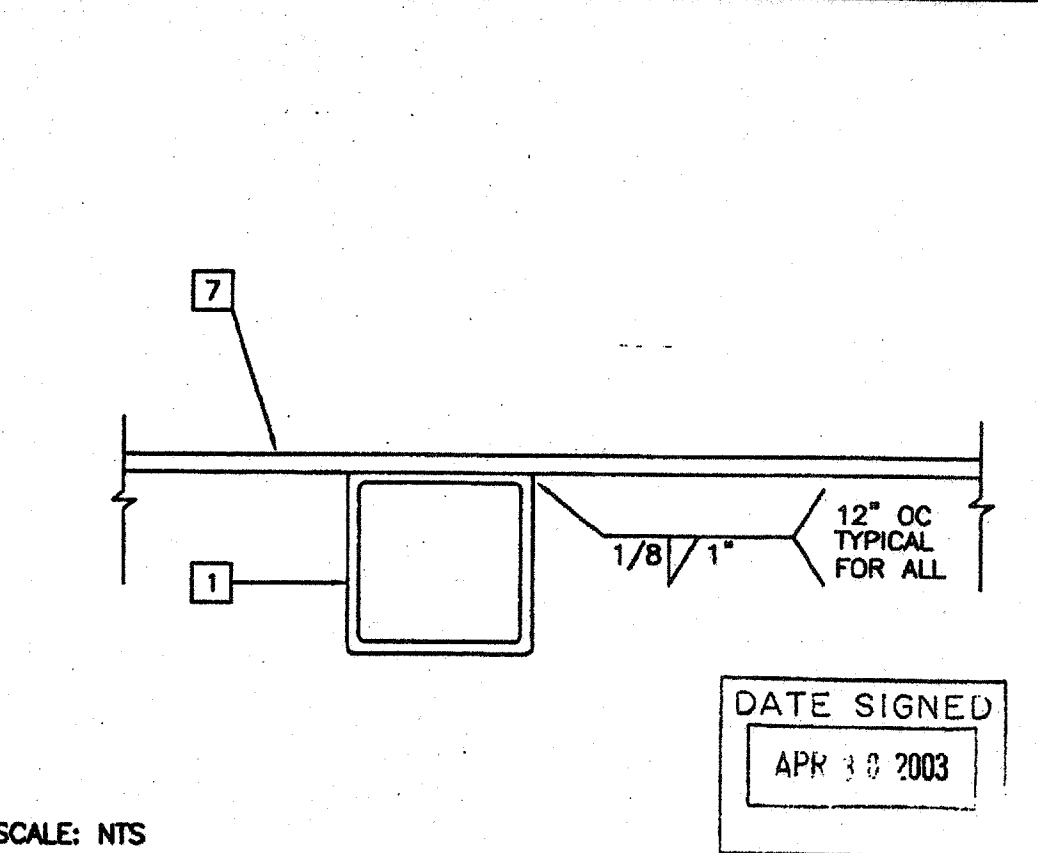
SCALE: 3"=1'-0"
ADJUSTABLE LEG 7



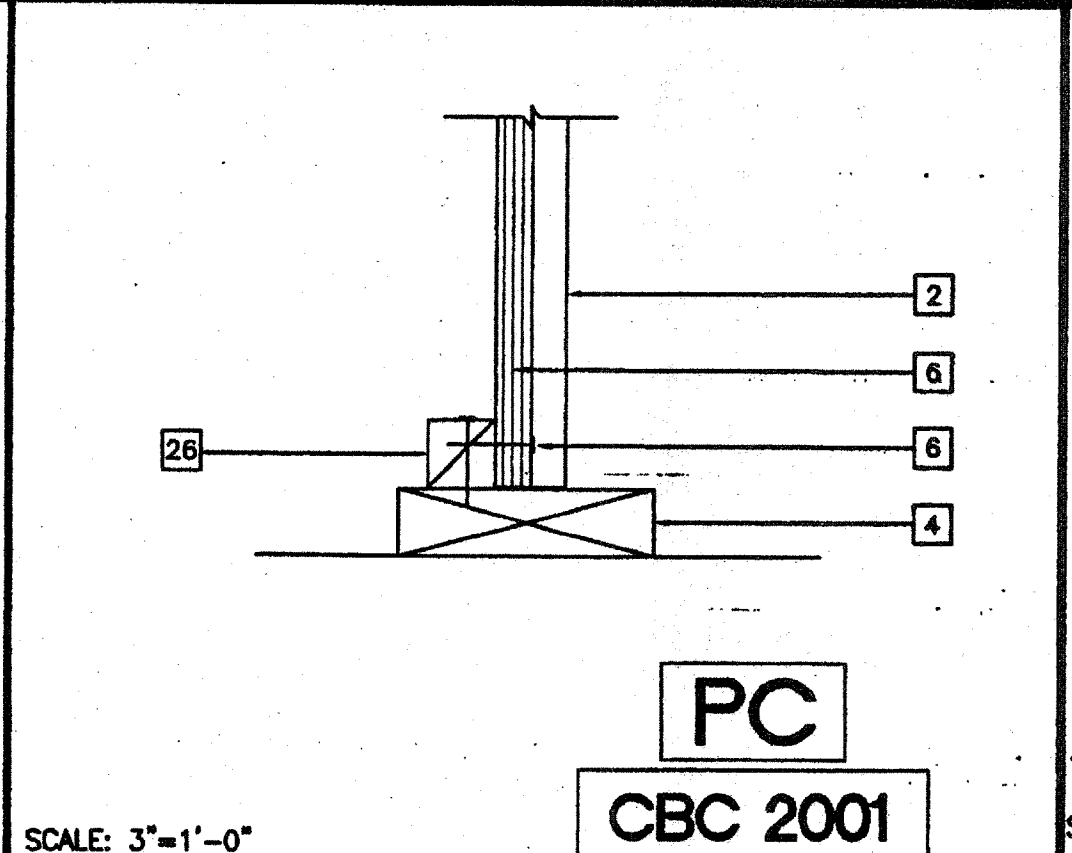
SCALE: 3/4"=1'-0"
END ELEVATION 3



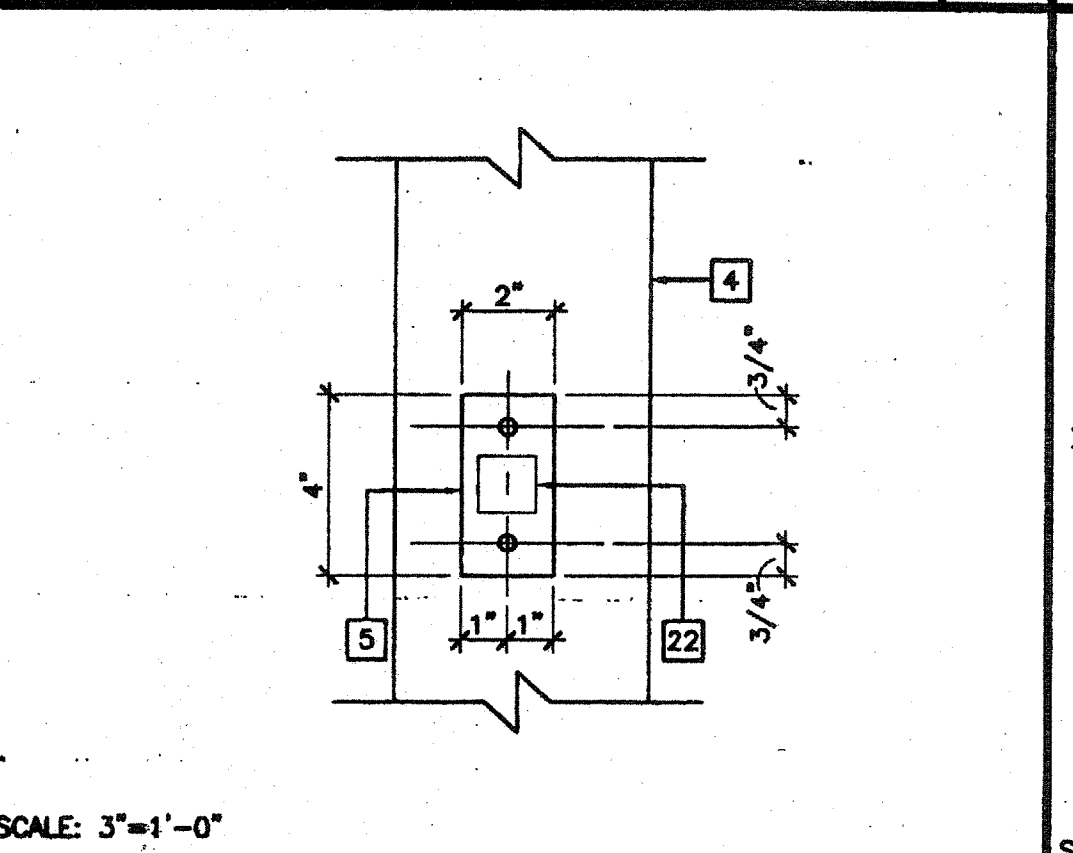
SCALE: NTS (BY DISTRICT)
RAMP TRANSITION 19



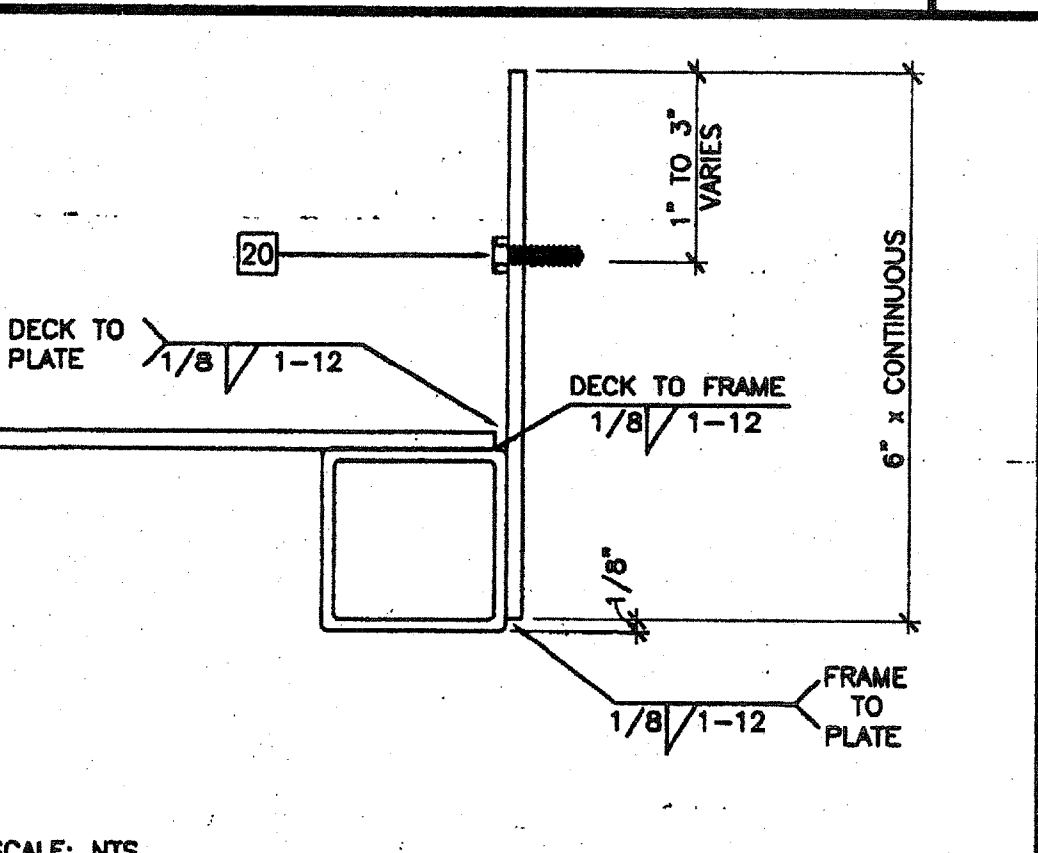
SCALE: NTS
SECTION AT INTERIOR FRAME 15



SCALE: 3"=1'-0"
SKIRT AT SILL PLATE 11



SCALE: 3"=1'-0"
ADJUSTABLE LEG BASE PLATE 7



SCALE: NTS
SECTION AT PLATE 4

REVISIONS

1		
2		
3		
4		
5		

AGENCY TRACKING NO. 82231-267
FILE NO. 15-8

IDENTIFICATION STAMP
DIV. OF THE STATE ARCHITECT

05118235
AC. PLS. SS.
DATE JUL 11 2017

PC Professional of Record Seal

Architects Seal

REGISTERED ARCHITECT
GEORGE C. EDWARDS
No. C 2556
JAN 9-20
STATE OF CALIFORNIA

IDENTIFICATION STAMP
DIV. OF THE STATE ARCHITECT
OFFICE OF REGULATION SERVICES

PC-04
104801
AC. PLS. SS.
DATE 5/22/2003

MODTECH™

2830 BARRETT AVENUE PH (909) 943-4014
PERRIS, CALIF. 92571 FAX (909) 940-0427

PROJECT NUMBER: 4012-125

© MODTECH, INC. 2002

CLASS LEASING INC STOCKPILE # 70
100-24 X 40 CLASSROOM BUILDINGS
4012-125 05-22-2003 80 MPH

DRAWN BY: STKP-70
DATE: 05-22-03

CHECKED BY: [Signature]
DATE: [Blank]

MODTECH Index No.

R1.02

PROJECT NO. PC-04-104801 FILE PATH: 2440-R1.02.DWG