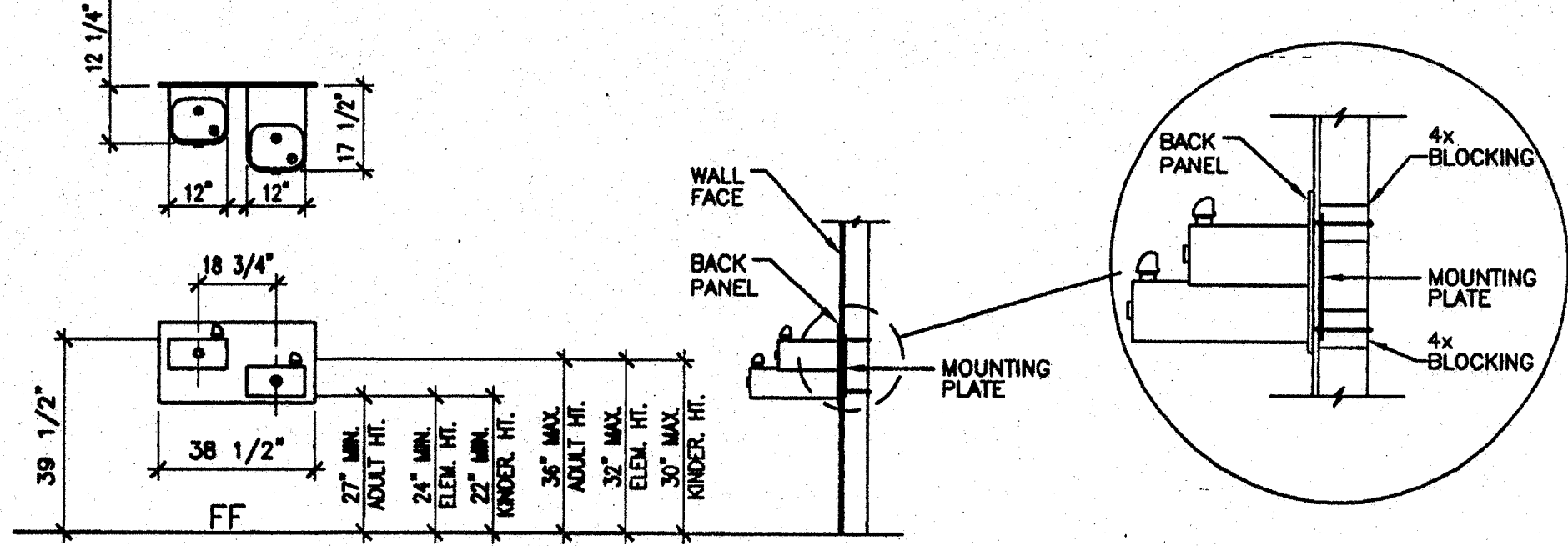


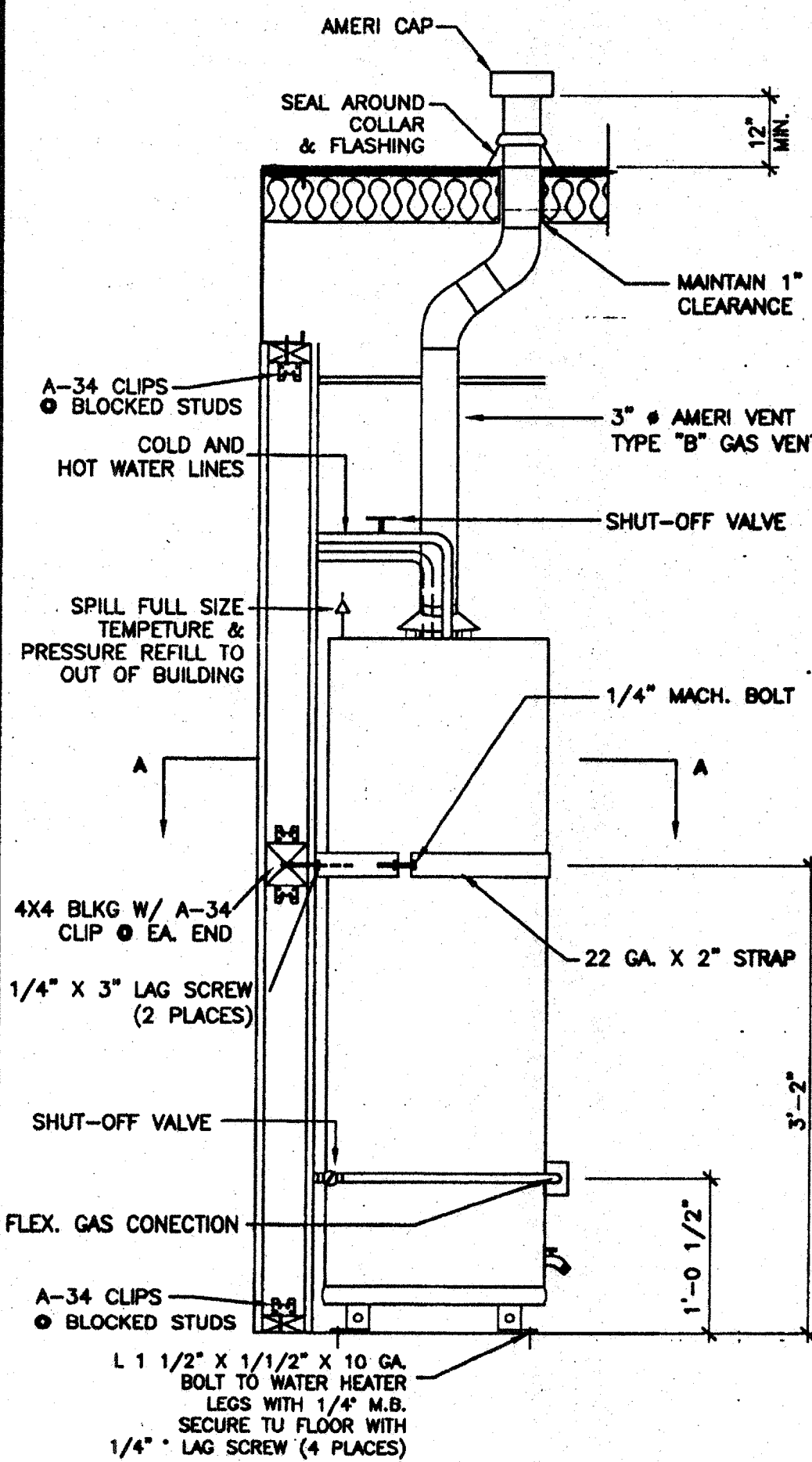
HALSEY TAYLOR
MODEL: HRFSEBP



SCALE: 1/2"=1'-0"

DRINKING FOUNTAIN BLOCKING DETAIL

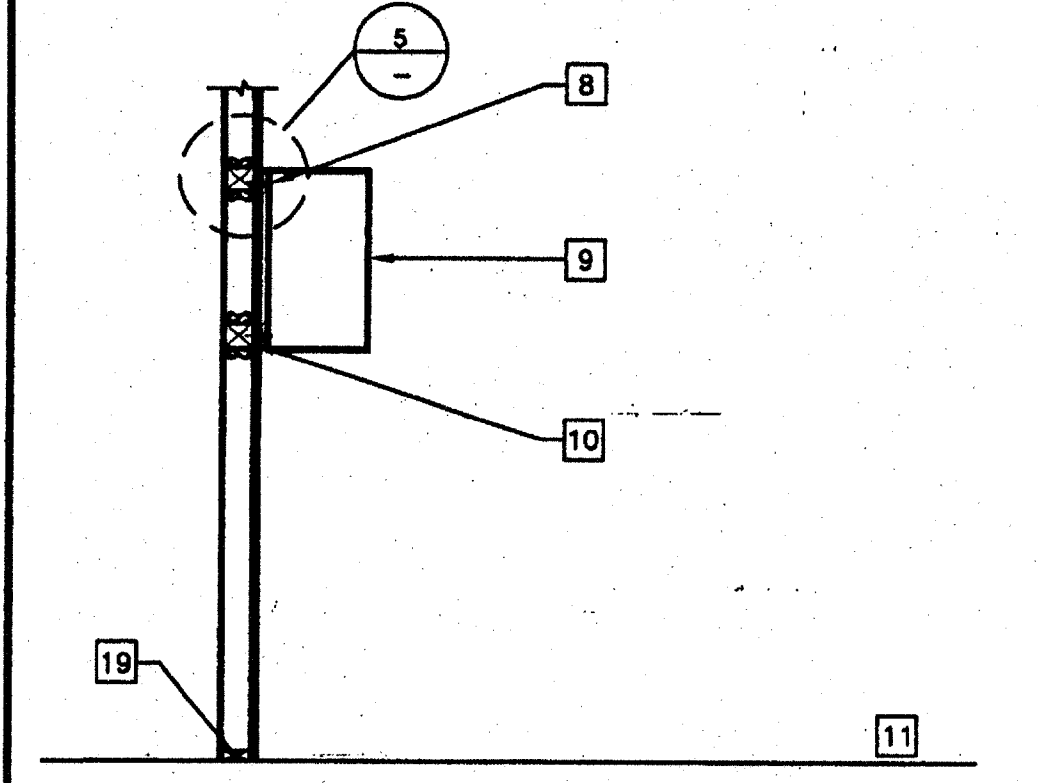
14



SCALE: N.T.S.

TEACHING WALL SECTION

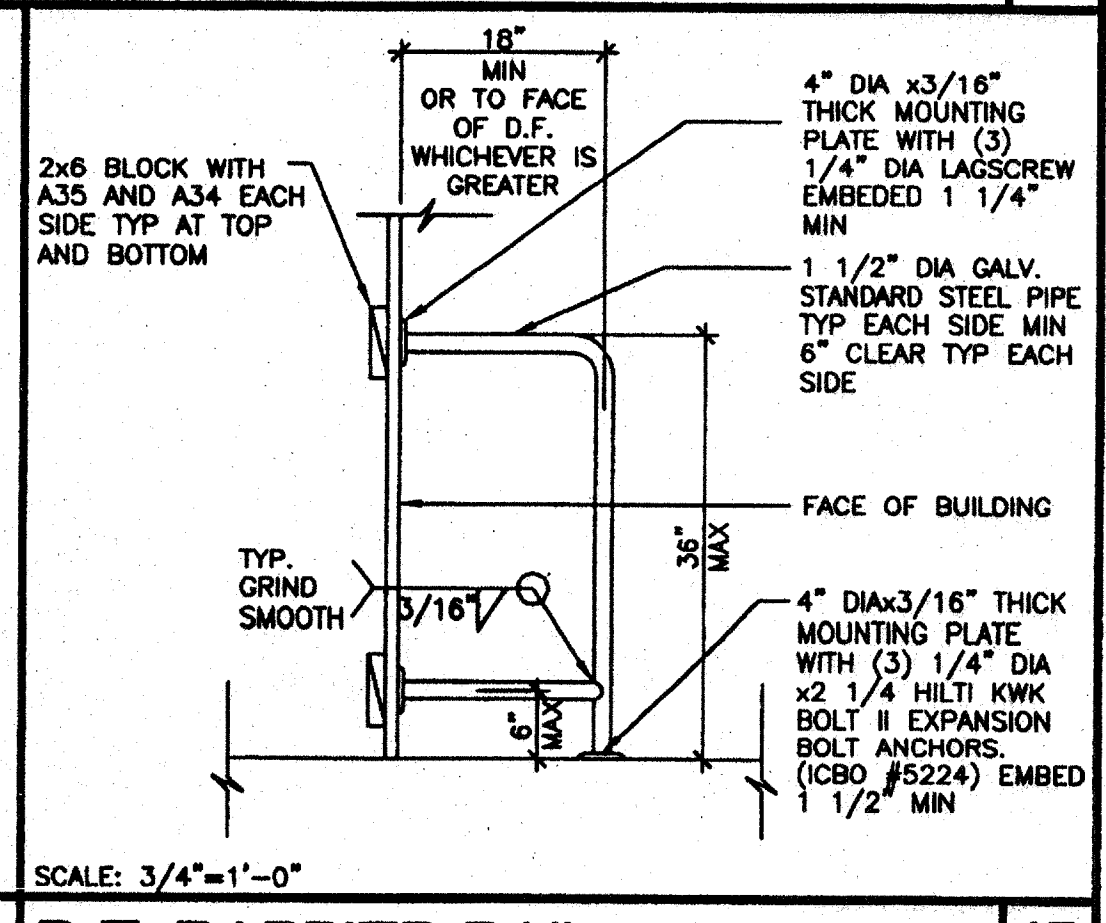
6



SCALE: NTS

WALL HUNG CABINET ANCHORAGE

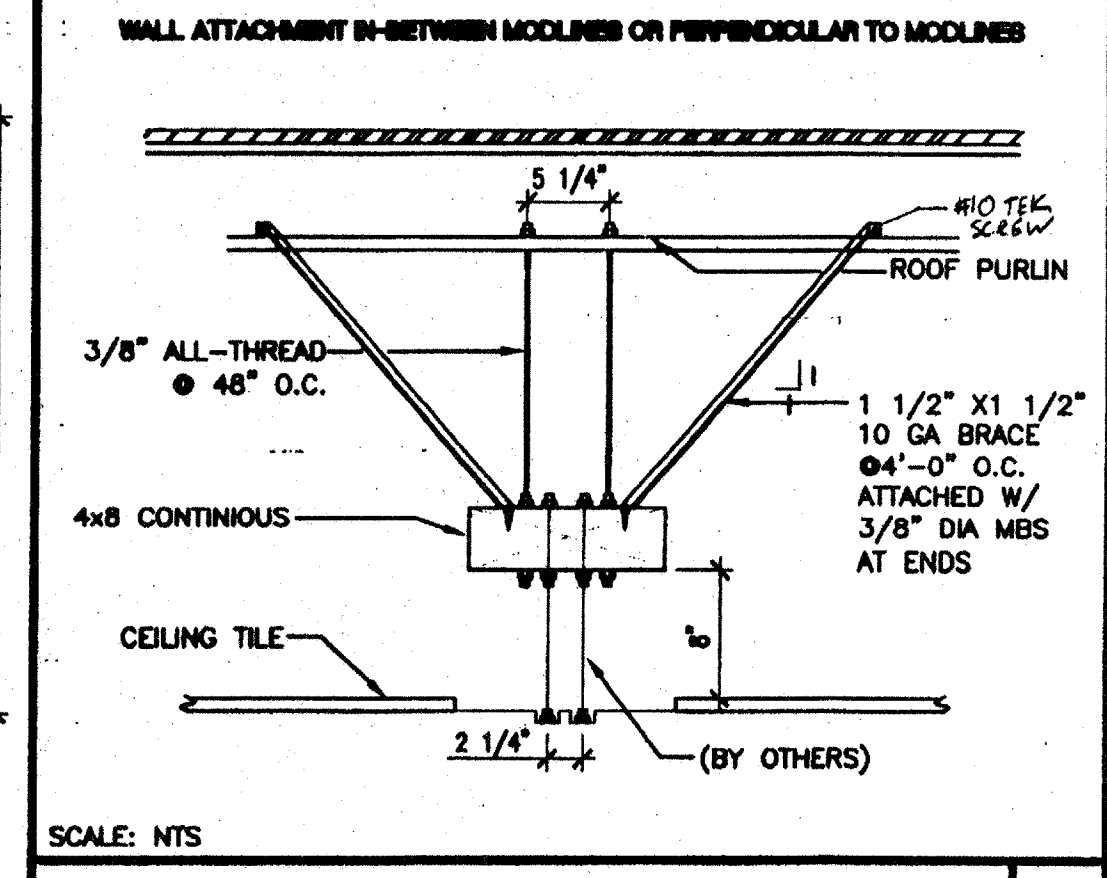
2



SCALE: 3/4"=1'-0"

D.F. BARRIER RAIL

15



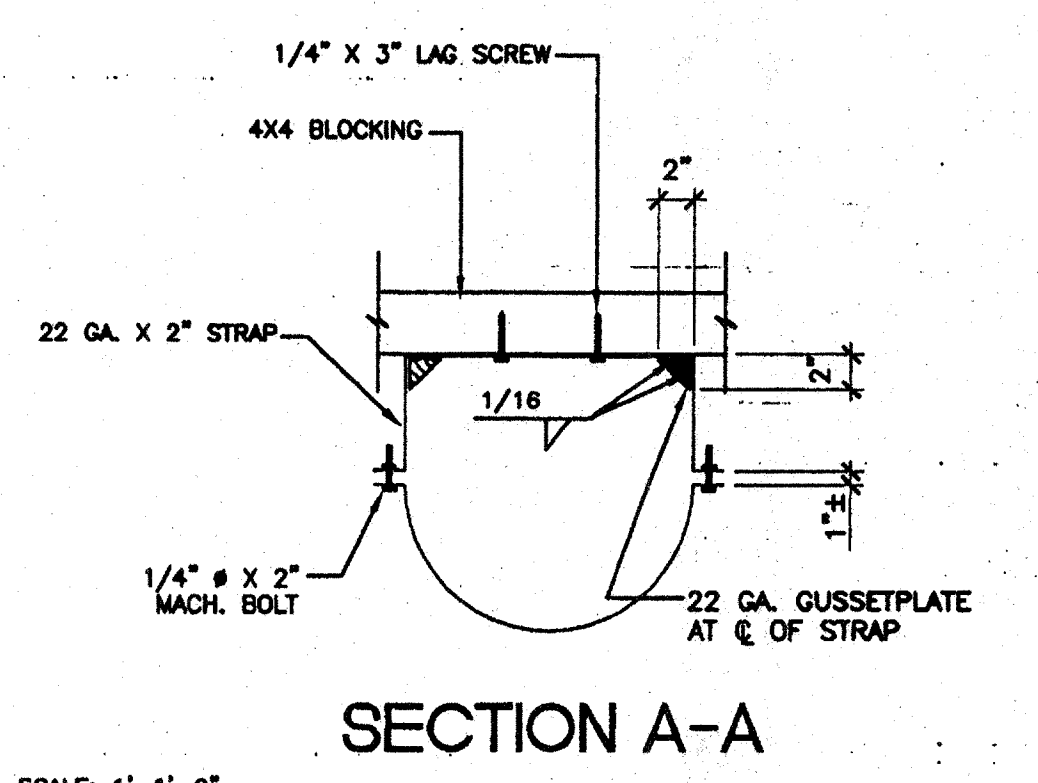
SCALE: NTS

OPERABLE WALL ATTACHMENT

7

BASE CABINET ANCHORAGE

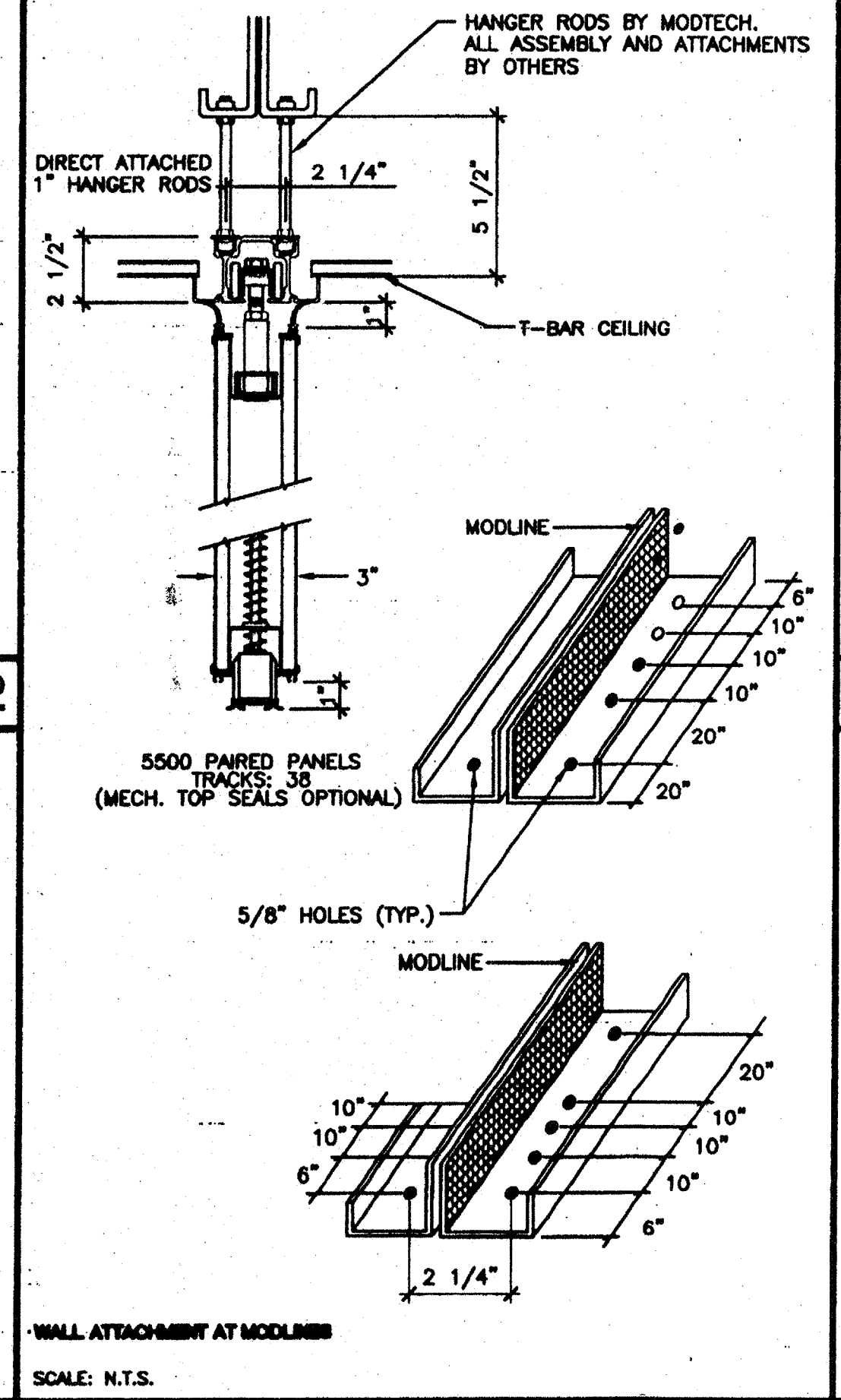
3



SCALE: 1"=1'-0"

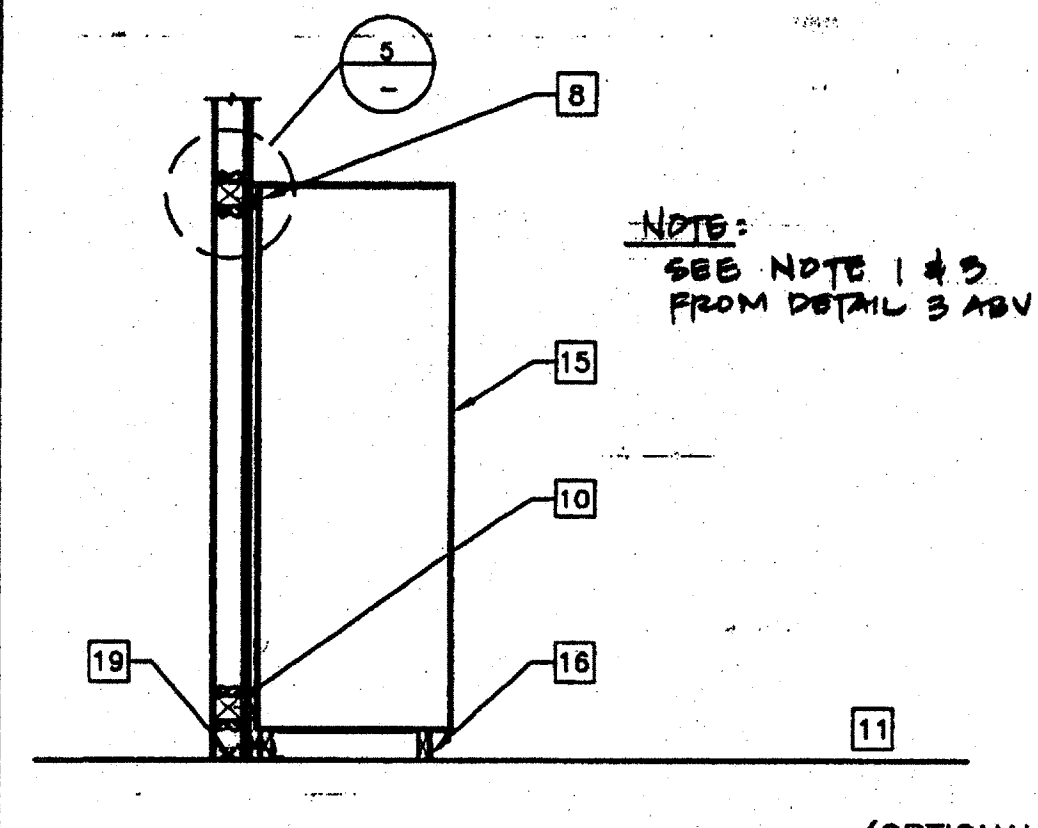
WATER HEATER BRACING

12



SCALE: N.T.S.

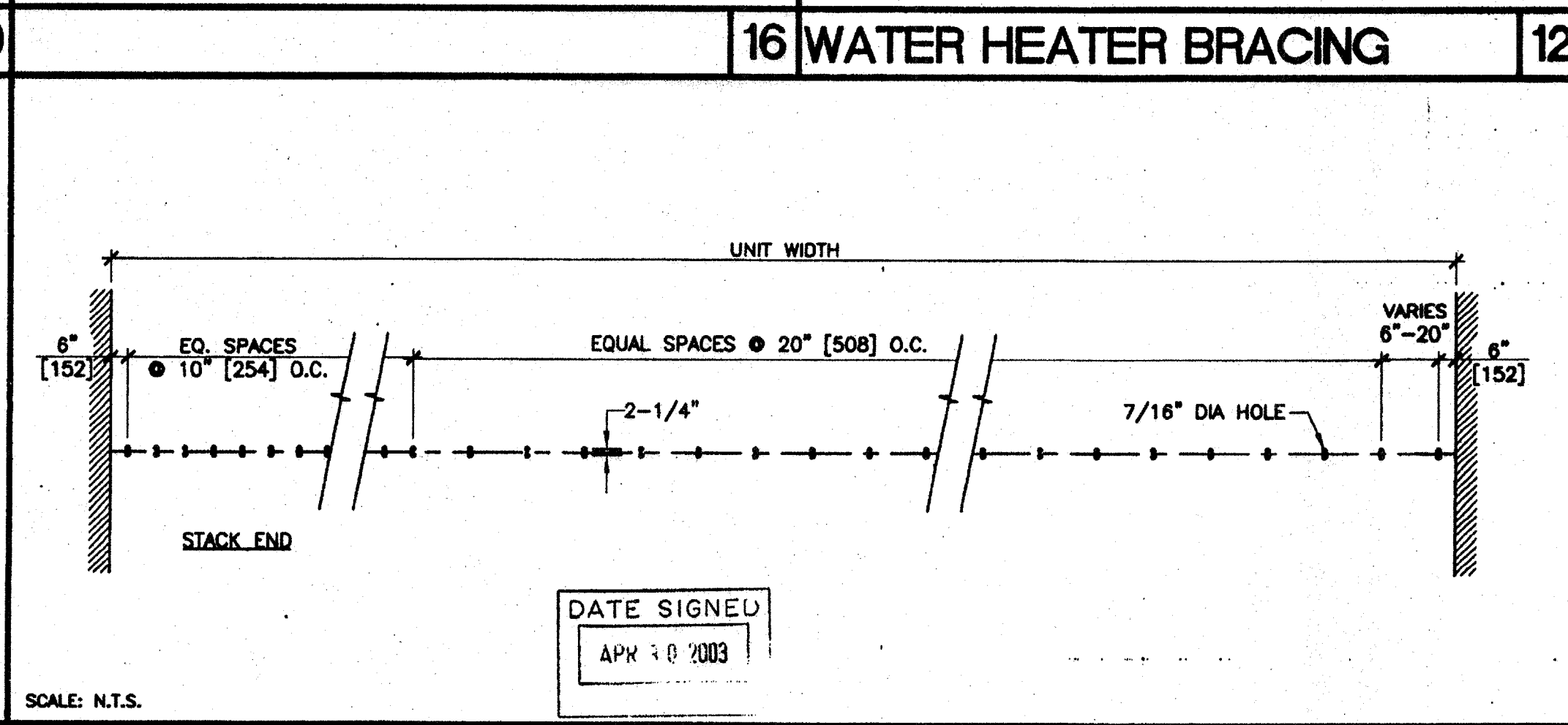
OPERABLE WALL ATTACHMENT



SCALE: NTS

TALL CABINET ANCHORAGE

4



SCALE: N.T.S.

OPERABLE WALL ATTACHMENT

(HANGER ROD LAYOUT)

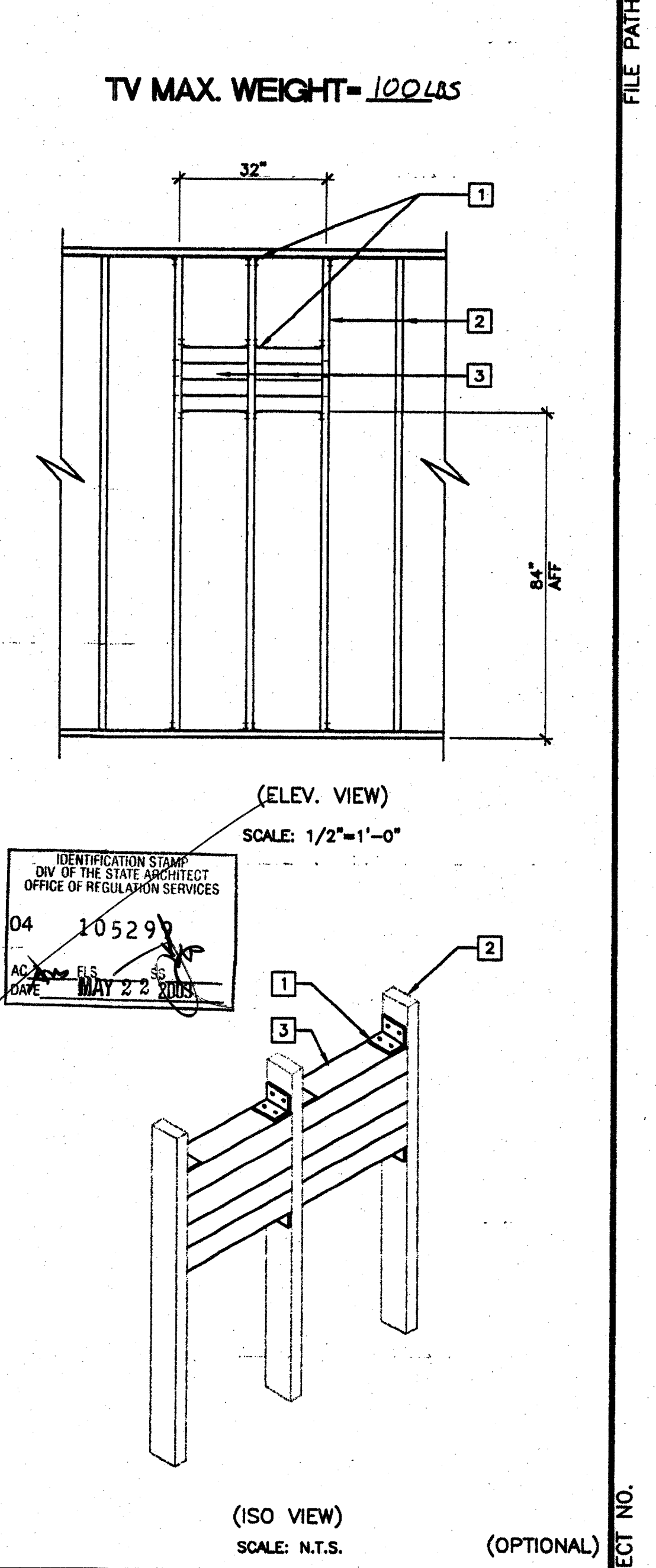
OPERABLE WALL ATTACHMENT

BLOCKING DETAIL

TV BLOCKING DETAIL

1

- KEY NOTES**
- A34 FRAMING CLIP (TYP)
 - 2x4 STUDS AT 16" O.C. TYP
 - 4x BLOCKING
 - PROJECTION SCREEN
 - MODULAR PLASTIC LAMINATE CABINET
 - SLIDING MARKER BOARDS
 - CEILING
 - #12 WOOD SCREWS MIN. 12" OC MIN 2 1/2" INTO 3x4 BLOCKING
 - 2 SCREWS PER CABINET AT EACH BACKING LOCATIONS TYPICAL
 - WALL HUNG CASEWORK
 - ANCHORAGE: 4x4 BLOCKING WITH PAIR OF SIMPSON A34 FRAMING CLIPS EACH END OF EACH BLOCK VERIFY VERTICAL SPACING
 - FINISH FLOOR
 - 4"x22 GA CONTINUOUS METAL STRAPS WITH #14 STMS AT 24" OC
 - BACK SPLASH
 - BASE CABINET
 - TALL CASEWORK
 - TOP SET BASE
 - 4"x 16 GA. METAL STRAP BRACING W(2) 16d EA STUD
 - INTERIOR FINISH (FIN)
 - BOTTOM PLATE



IDENTIFICATION STAMP
DIV. OF THE STATE ARCHITECT
OFFICE OF REGULATION SERVICES
04 10529
MAY 22 2003

(ISO VIEW)
SCALE: N.T.S. (OPTIONAL)

REVISIONS

1		
2		
3		
4		
5		

AGENCY TRACKING NO. 62231-267
FILE NO. 15-6
IDENTIFICATION STAMP
DIV. OF THE STATE ARCHITECT
03118235
AC / FL / SS
DATE: JUL 11 2003

PC Professional of Record Seal
Architects Seal
LICENSED ARCHITECT
STATE OF CALIFORNIA
LICENSE EXPIRES 6-30-2004

IDENTIFICATION STAMP
DIV. OF THE STATE ARCHITECT
OFFICE OF REGULATION SERVICES
PC-04
104801
DATE: 5/20/03

PROJECT NUMBER: _____
© MODTECH, INC. 2002

MODTECH™
2830 BARRETT AVENUE PH (909) 943-4014
PERRIS, CALIF. 92571 FAX (909) 940-0427

CLASS LEASING INC STOCKPILE # 70
100-24 x 40 CLASSROOM BUILDINGS
4012-125 05-22-2003 80 MPH

DRAWN BY: STKP-70
DATE: 05-22-03
CHECKED BY:
DATE:
MODTECH Index No.
A7.01

FILE PATH: 2440-A7.01.DWG PROJECT NO. PC-04-104801